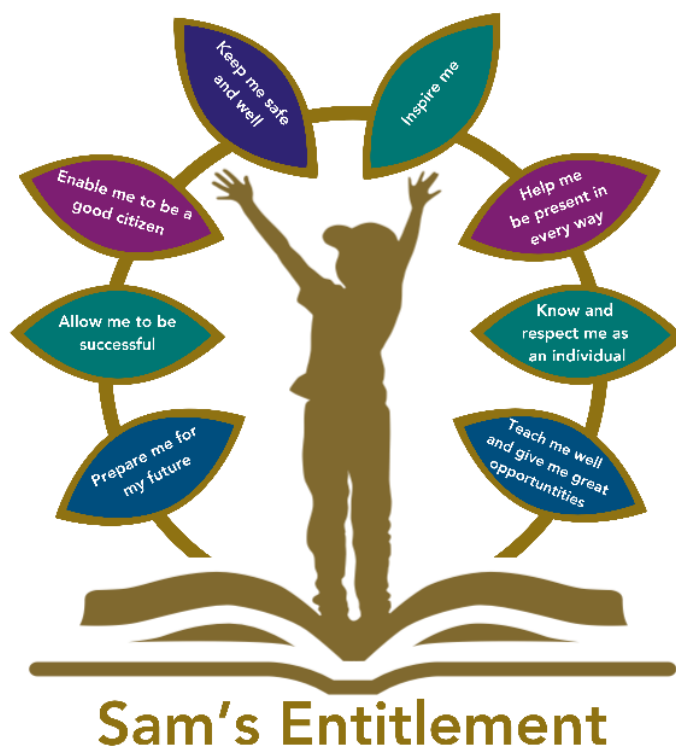




Physical Intervention Policy

Reviewed on	2025/26, Term 1	Review frequency	Annual
Next review due	2026/27, Term 1	Template Yes / No	Yes
Owner	Strategic Lead, Behaviour & SEND	Approved by	Board of Trustees





Gatcombe Park Primary School aims to promote positive attitudes, behaviour and self-regulation in our school community, as we see it as essential to successful living, learning and social development.

In accordance with our values of Teamwork, Respect and Aim High, all members of our community can expect the right to a safe and secure environment. Every member must feel equally valued and be able to achieve intellectually, emotionally, morally and spiritually, where they can think for themselves and receive high quality teaching.

Along with our school values, we have adopted school rules that underpin our expectations linked to each value:



Our Values and Rules



Teamwork

- We keep each other safe.
- We help each other to learn and succeed.
- We listen and share ideas respectfully.
- We include everyone and celebrate our differences.
- We work together to solve problems calmly & respectfully.



Respect

- We speak kindly to everyone.
- We treat others how we want to be treated.
- We look after our school environment.
- We follow instructions the first time.
- We allow each other the opportunity to learn.



Aim High

- We try our best, even when things are a struggle.
- We take pride in our work, behaviour and our school environment.
- We learn from mistakes and are resilient.
- Set ambitious goals (go above and beyond).
- Take risks with our learning and push ourselves.

This policy is to be read in conjunction with the Behaviour Policy, Safeguarding and Child Protection Policy and Equality Policy and Objectives.

1. Background

Restrictive physical intervention is when a member of staff uses force intentionally to restrict a child's movement against his or her will. All staff within this setting aim to help children take responsibility for their own behaviour. We do this through a combination of approaches, which includes:

- Forgiveness, reconciliation and restoration
- Creating a sense of pride in belonging to Gatcombe Park Primary School
- Promoting the school values
- Establishing strong relationships
- Acting in accordance to the school rules

- Providing a pleasant environment
- Access to the space and resources they need to help them make good choices and achieve their learning goals.

More details about this and our general approach to promoting positive behaviour can be found in our Behaviour Policy. There are times when children's behaviour presents challenges that may require restrictive physical intervention. This policy sets out our expectations for the use of such intervention. It is not intended to refer to the general use of physical contact which might be appropriate in a range of situations, such as:

- Giving physical guidance to children (for example in practical activities and PE).
- Providing emotional support when a child is distressed.
- Providing physical care (such as first aid or toileting- please see our Intimate Care Policy).

This policy is consistent with our Safeguarding and Child Protection Policy and Equality Policy and Objectives, and with national and local guidance for schools on safeguarding children.

We exercise appropriate care when using physical contact (there is further guidance in our Safeguarding and Child Protection Policy); there are some children for whom physical contact would be inappropriate (such as those with a history of physical or sexual abuse, or those from certain cultural and religious groups). We pay careful attention to issues of gender and privacy, and to any specific requirements of certain cultural/religious groups.

2. Principles for the use of Restrictive Physical Intervention

'Reasonable, Proportionate and Necessary'

In the context of positive approaches:

We only use restrictive physical intervention where the risks involved in using force are outweighed by the risks involved in not using force. It is not our preferred way of managing children's behaviour. Restrictive physical intervention may be used only in the context of a well-established and well-implemented positive behaviour response plan with the exception of emergency situations. We describe our approach to promoting positive behaviour in our Behaviour Policy. We aim to do all we can in order to avoid using restrictive physical intervention. We would only use restrictive physical intervention where we judge that there is no reasonably practicable less intrusive alternative. However, there may be rare situations where we judge that we would need to use restrictive physical intervention immediately. We would use restrictive physical intervention at the same time as using other approaches, such as saying, "Stop!" and giving a warning of what might happen next. Safety is always a paramount concern and staff are not advised to use restrictive physical intervention if it is likely to put themselves at risk.

Duty of Care

We all have a duty of care towards the children in our setting. When children are in danger of hurting themselves or others, or of causing significant damage to property, we have a responsibility to intervene. In most cases, this involves an attempt to divert the child to another activity, using simple instructions such as "Stop!" along with a warning of what might happen next. However, if we judge that it is necessary, we may use restrictive physical intervention.

Reasonable Force

When we need to use restrictive physical intervention, we use it within the principle of reasonable force. This means using an amount of force in proportion to the circumstances. We use as little force as is necessary in order to maintain safety, and we use this for as short a period as possible. Throughout the use of physical intervention we will communicate with other staff and the child.



3. When can restrictive physical intervention be used?

The use of restrictive physical intervention may be justified where a pupil is:

- Committing an offence (or, for a pupil under the age of criminal responsibility, what would be an offence for an older pupil).
- Causing personal injury to, or damage to the property of, any person (including the pupil himself); or
- Prejudicing the maintenance of good order and discipline at the school or among any pupils receiving education at the school, whether during a teaching session or otherwise.

Restrictive physical intervention may also be appropriate where, although none of the above have yet happened, they are judged as highly likely to be about to happen. We are very cautious about using restrictive physical intervention where there are no immediate concerns about possible injury or exceptional damage to property.

Restrictive physical intervention would only be used in exceptional circumstances, with fully trained staff and who are able to make informed judgements about the relative risks of using, or not using, restrictive physical intervention; for example stopping a younger child leaving the school site.

The main aim of restrictive physical intervention is usually to maintain or restore safety. We acknowledge that there may be times when restrictive physical intervention may be justified as a reasonable and proportional response to prevent damage to property or to maintain good order and discipline at the school.

However, we would be particularly careful to consider all other options available before using restrictive physical intervention to achieve either of these goals. In all cases, we remember that, even if the aim is to re-establish good order, restrictive physical intervention may actually escalate the situation.

If we judge that restrictive physical intervention would make the situation worse, we would not use it, but would do something else (like go to seek help, make the area safe or warn about what might happen next and issue an instruction to stop) consistent with our duty of care. Our duty of care means that we might use a restrictive physical intervention if a child is trying to leave our site and we judged that they would be at unacceptable risk. This duty of care also extends beyond our site boundaries: there may also be situations where we need to use restrictive physical intervention when we have control or charge of children off site (e.g. on trips). We never use restrictive physical intervention out of anger or as a punishment.

4. Who can use restrictive physical intervention?

If the use of restrictive physical intervention is appropriate and is part of a behaviour response plan (see appendix 1), a trained member of staff should be involved. However, in an emergency, any of the following may be able to use reasonable force in the circumstances set out in Section 93 of the Education and Inspections Act (2006):

- Any teacher who works at the school and;
- Any other person whom the Headteacher has authorised to have control or charge of pupils, including:
 - Support staff whose job normally includes supervising pupils such as teaching assistants, learning support assistants, learning mentors and lunchtime supervisors and;
 - People to whom the Headteacher has given temporary authorisation to have control or charge of pupils such as paid members of staff whose job does not normally involve supervising pupils (for example catering or premises-related staff) and unpaid volunteers (for example parents accompanying pupils on school organised visits) but not other children.

(Note: All employed members of staff are authorised to use appropriate restrictive physical intervention)



5. Planning around an individual and risk assessment

In an emergency, staff will do their best, using reasonable force within their duty of care.

Where an individual child has an individual behaviour response plan, which includes the use of restrictive physical intervention, we will ensure that relevant staff receive appropriate training and support in behaviour management as well as restrictive physical intervention. We will consider staff and children's physical and emotional health when we make these plans and consult with the child's parents/guardians. In most situations, our use of restrictive physical intervention is in the context of a prior risk assessment (see appendix 2) which considers:

- What are the risks?
- Who is at risk and how?
- What can we do to manage the risk? (This may include the possible use of restrictive physical intervention.)

We use this risk assessment to inform the behaviour response plan that we develop to support the child. If this plan includes restrictive physical intervention, it will be as just one part of a whole approach to supporting the child's behaviour.

The behaviour response plan outlines:

- Our understanding of what the child is trying to achieve or communicate through his/her behaviour
- How we adapt our environment to better meet the child's needs.
- How we teach and encourage the child to use new, more appropriate behaviours.
- How we reward the child when he or she makes progress.
- How we respond when the child's behaviour is challenging (responsive strategies).

We pay particular attention to responsive strategies. We use a range of approaches (including humour, distraction, relocation, and offering choices) as direct alternatives to using restrictive physical intervention. We choose these responsive strategies in the light of our risk assessment. We draw from as many different viewpoints as possible when we anticipate that an individual child's behaviour may require some form of restrictive physical intervention. In particular, we include the child's perspective. We also involve the child's parents (or those with parental responsibility), staff from our school who work with the child, and any visiting support staff (such as Educational Psychologists, Behaviour Support Team workers, Speech and Language Therapists, Social Workers and colleagues from the Child and Adolescent Mental Health Services). We record the outcome from these planning meetings and seek parental signature to confirm their knowledge of our planned approach. We review these plans termly or more frequently if there are any concerns about the nature or frequency of the use of restrictive physical intervention or where there are any major changes to the child's circumstances. We recognise that there may be some children within our school who find physical contact in general particularly unwelcome as a consequence of their culture/religious group or disability. There may be others for whom such contact is troubling as a result of their personal history, in particular of abuse. We have systems to alert staff discreetly to such issues so that we can plan accordingly to meet individual children's needs.

6. What type of restrictive physical intervention can be used?

Any use of restrictive physical intervention by our staff should be consistent with the principle of reasonable force. In all cases, staff should be guided in their choices of action by the principles in section 2 above.

Where staff need specific training in the use of restrictive physical intervention, we arrange that they should receive Securicare training. This training is accredited through the national accreditation system set up by BILD-ACT. We ensure that staff have access to appropriate refresher training.

Further, we actively work to ensure general training is accessed by our staff in the following areas:

- Relating to legal issues policy and risk assessment.
- In addition to behaviour management strategies such as positive approaches to



behaviour management.

- De-escalation techniques and managing.
- A record of such training is kept and monitored.

7. Recording and reporting

We record any use of restrictive physical intervention using the Restrictive Physical Intervention (RPI) Record (see appendix 3). We do this as soon as possible and in any event within 24 hours of the incident. A record will also be made on CPOMS.

Further, our governing body ensures that procedures are in place for recording significant incidents and then reporting these incidents as soon as possible to pupil's parents.

After using restrictive physical intervention, we ensure that the Headteacher is informed as soon as possible. We also inform the parents either face-to-face or by phone (or by letter or note home with the child if this is not possible).

In rare cases, we might need to inform the police, such as in incidents that involve the possession of weapons. This would be in line with our general practice, informed by the DfE Guidance 'Screening, Searching and Confiscation – Advice for Schools (2022)' and Section 45 of the Violent Crime Reduction Act 2006.

8. Supporting and reviewing

We recognise that it is distressing to be involved in a physical intervention, whether as the child being held, the person doing the holding, or someone observing or hearing about what has happened.

After a restrictive physical intervention, we give support to the child so that they can understand why it was necessary. Where we can, we record how the child felt about this. Where it is appropriate, we have the same sort of conversations with other children who observed what happened. In all cases, we will wait until the child has calmed down enough to be able to talk productively and learn from this conversation. If necessary, the child will be asked whether he or she has been injured so that appropriate first aid can be given. This also gives the child an opportunity to say whether anything inappropriate has happened in connection with the incident.

We also support adults who were involved, either actively or as observers, by giving them the chance to talk through what has happened with the most appropriate person from the staff team.

A key aim of our after-incident support is to repair any potential strain to the relationship between the child and the people that were involved in the restrictive physical intervention.

After a restrictive physical intervention, we consider whether the individual behaviour plan needs to be reviewed so that we can reduce the risk of needing to use restrictive physical intervention again.

9. Monitoring

We monitor the use of restrictive physical intervention in our school. The Headteacher and Chair of Governors are responsible for reviewing the records on a termly basis, and more often if the need arises, so that appropriate action can be taken. The information is also used by the governing body when this policy and related policies are reviewed.

Our analysis considers equalities issues such as age, gender, disability, culture and religion issues in order to make sure that there is no potential discrimination; we also consider potential child protection issues. We look for any trends in the relative use of restrictive physical intervention across different staff members and across different times of day or settings. Our aims are to protect children, to avoid discrimination and to develop our ability to meet the needs of children without using restrictive physical intervention.

10. Concerns and complaints



The use of restrictive physical intervention is distressing to all involved and can lead to concerns, allegations or complaints of inappropriate or excessive use. In particular, a child might complain about the use of restrictive physical intervention in the heat of the moment but on further reflection might better understand why it happened. In other situations, further reflection might lead the child to feel strongly that the use of restrictive physical intervention was inappropriate. This is why we are careful to ensure all children have a chance to review the incident after they have calmed down.

If a child or parent has a concern about the way restrictive physical intervention has been used, our school's complaints procedure explains how to take the matter further and how long we will take to respond to these concerns.

Where there is an allegation of assault or abusive behaviour, we ensure that the Headteacher is immediately informed. We would also follow our child protection procedures. In the absence of the Headteacher, in relation to restrictive physical intervention, we ensure that the assistant head teachers are informed.

If the concern, complaint or allegation concerns the Headteacher, we ensure that the Chair of Governors is informed. If parents/carers are not satisfied with the way the complaint has been handled, they have the right to take the matter further as set out in our complaints procedure. The results and procedures used in dealing with complaints are monitored by the governing body.

11.

Please see our physical intervention guidance shared with all staff.

