



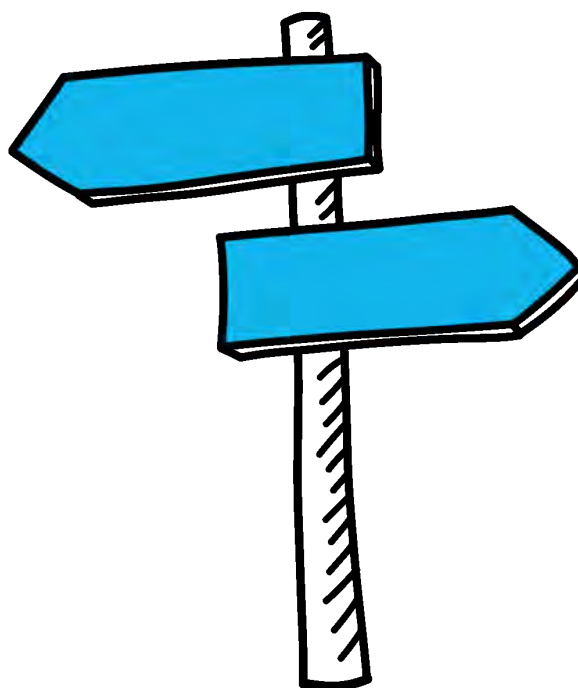
Secondary Teacher Training

**Active Teacher Training at
Cromwell Community College**



Contents

About Active Teacher Training.....	3
Meet the Secondary Teacher Training Team at Cromwell	4
Contact Active Teacher Training at Cromwell	6
Ready to apply?	6
Find teacher training courses	6
The benefits you will receive	7
What you will learn.....	7
Where you'll learn.....	8
How you will learn	9
How we will support you	10
The qualifications you will gain.....	11
The funding you could receive.....	11



About our Teacher Training

Active Teacher Training at Cromwell Community College work with two key partners: **Ambition Institute** and the **University of Bedfordshire**.

Ambition is a national education charity, who have already worked with over 54,000 teachers in over 9,000 schools to deliver high-quality evidence-based professional development. This equates to 1/9 teachers who have engaged in an Ambition programme!

The University of Bedfordshire (UoB) are a Higher Education Institution who have forged a special, close relationship with Cromwell Community College for over twenty-five years. Many of our colleagues teaching today began their career through this route.

If you're considering completing your teacher training with us, you'll choose one of these two partners. **Both options mean that you'll spend your time in Cromwell or one of our local partner schools:** the key difference is that UoB trainees will gain QTS (qualified teacher status) from the University and will attend professional studies in Bedford on Fridays whereas Ambition trainees will gain QTS from Liverpool Hope University and attend professional studies in Chatteris or Chantry in Suffolk on Wednesdays. (NB. Ambition trainees do not travel to Liverpool!)

Whichever choice suits you better, our teacher training combines expert knowledge from within our schools and a high-quality curriculum. All our Teacher Training team at Cromwell are practising teachers – so we get what goes on in the classroom!

About Active Teacher Training

Active Teacher Training at Cromwell Community College in Chatteris is at the centre of the local education community and **we've been delivering teacher training for decades!** We have a **dedicated teacher training centre** at the very heart of the school in an open-plan glass-fronted office: you'll be in the thick of the action meeting our pupils and staff when you train with us.

Because we're an established, successful provider we have a whole team of staff who work together to get you off to a flying start with your new career! We're all friends as well as colleagues – but we're also individuals which means that, just like you, we bring our own strengths and interests to your training sessions.

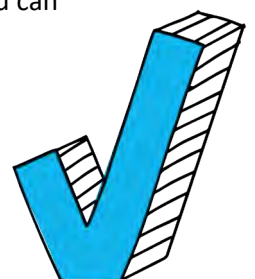
We're proud of our long-standing successful track record in delivering high-quality, evidence informed teacher training with measurable impact in the classroom. **We think you'll also be interested to know that we have helped to secure 100% of all our trainees jobs in our local schools following their training time with us,** if they have chosen to work in the local area. This means that choosing Active at Cromwell means that you're making a choice to be part of a team, a community and a professional body.

Your programme will include one main placement school as well as some time in a second location; taught content and independent study. We'll help you with any questions you have and we'll make sure that you have an experienced, practising mentor for a minimum of ninety minutes each week one-on-one so that you can discuss how things are going and practise what you've been learning.

For more information, reach out (or even better arrange to pop in!) We can't wait to meet you.

Ps. Don't leave it too late – in recent years many of our courses have been filled early!!

Salaried courses could be available depending on subject and prior experience.



Meet the Secondary Teacher Training Team at Cromwell



Faye Hi, my name is Faye Baxter, and I will be one of your main contacts throughout the course in my role as Secondary ITT Partner Lead for the Active Learning Trust. I am also the Vice Principal of Cromwell Community College. I have 28 years of teaching and leadership experience across Cambridgeshire and Peterborough. I have been involved in Initial Teacher Education for over 10 years having delivered the full school-based programme for University of Bedford and currently delivering professional studies for Liverpool Hope University in partnership with Ambition Institute. I have 3 almost adult children 15, 19 and 22. I was also a foster mum for 13 years and have a passion to support all children to get the education they deserve to open doors.



Matt Hi, my name is Matt! I teach French and German and I've been lucky enough to work in schools in France and the US as well as around Cambridgeshire. I have worked as SLT, a Specialist Leader in Education, led a Sixth Form improvement project in Norfolk and delivered Subject Knowledge Enhancement courses for TES. Currently I'm a Lead Practitioner for ITT. Working with people coming into the profession is by far the best job – there's a real energy and passion...plus I get to steal new ideas all the time! When I'm not in school I love running, cooking and, most of all, travelling!



James My name is James. You will work with me as the Induction Tutor at Cromwell. I started teaching at Cromwell as a trainee in January 2020 while on my second placement, before being employed as a teacher of History and Law in September 2020. Since then, I have also served as Cromwell's Enrichment Coordinator, organising different extracurricular activities and opportunities across the college. When I'm not in school, you will normally find me getting frustrated on the golf course or watching Formula 1!"



Tinneisha Hi, my name is Tinneisha! I'm Head of Cromwell's Philosophy and Ethics and I also work with our trainee teachers on several key areas, such as developing their Subject Knowledge Plans and supporting their Contrasting Placements. Outside of work you will find me in gym or on the netball courts, working within a team is where I thrive, both in and out of work. I am excited to be able to help new teachers - one of the advantages I have is that I completed my own teacher training at Cromwell so I have first-personal knowledge of what it's like on our course!



Tim Hi, my name is Tim! I teach Geography and History and one of my roles on the programme is delivering what's known as 'deliberate practice' – essentially a way to get familiar with new pedagogy. I have 23 years' experience as a secondary school teacher, Head of subject, Head of Year and Lead Practitioner across a variety of schools including an international school in Bogota, Colombia. I am passionate about supporting staff and guiding them through the challenging nature of the teaching profession! When I'm not working, you will usually find me exploring new places with my family, reading avidly and listening to music alongside performing when I can.



Narene Hi, my name is Narene. I am a teacher of English and Senior Lead Mentor. I have been involved in ITT (Initial Teacher Training) at Cromwell for several years and have had the pleasure seeing many of our trainees be successful in their teaching careers once they've qualified. One of my roles is to look after the welfare of trainees while completing their PGCE with us. This involves checking-in with you and being on hand to give advice and answer any questions you may have. I am very enthusiastic about ITT and believe we invest in our trainees at Cromwell to ensure your success. We have a unique commitment to the local community and our team of mentors is one of the best around!



Michelle Hi, my name is Michelle. My role is Admin Support, so that means I'm usually the first person you'll speak to when you apply for one of our courses! Feel free to get in touch if you want any information or if you have any questions. I love my job because I believe we genuinely provide exceptional training which in turn means great teachers and that means the power to change lives. When I'm not at work, I enjoy spending time with my family, exploring new places and lots of dog walking. I look forward to helping you if you have any questions!

Contact Active Teacher Training at Cromwell

Email us:

mdodman@cromwell.cambs.sch.uk

Call us:

01354 697495

We're here from 8am-4pm whenever school is in session

If you've arranged to make a visit, we're at:

Cromwell Community College

Wenny Road

Chatteris

Cambridgeshire

PE16 6UU

Ready to apply? Click below.

[Find teacher training courses - GOV.UK \(www.gov.uk\)](http://www.gov.uk)

The benefits you will receive

With our Teacher Training you will:

- **Make an impact:** transforming your future and the lives of our students with our expert-led, in-school teacher training.
- **Become a qualified teacher:** achieving qualified teacher status (QTS) in addition to an internationally recognised postgraduate certificate in education (PGCE).
- **Get funding to train:** you could be eligible for a tax-free bursary or scholarship up to £30,000 which you would not need to pay back.
- **Support:** get expert support from a dedicated, trained mentor and experienced teacher, who will guide you every step of the way.
- **Viv-Up employee benefits:** all our trainees are provided with an employee benefit scheme to support health and well-being.
- **Laptop:** all our trainees are provided with a laptop for the duration of the course to support their training year.

What you will learn



How you can create calm, safe and purposeful places of learning where all children and young people can achieve.



How you can support all children and young people to learn in the classroom – from thinking about how you present information, to helping them learn independently in lessons.



How you can design lessons and curricula that help children and young people to learn new and more complex ideas over time.



How you can better understand the impact your teaching is having and how to respond when your pupils struggle.



Looking at what it is to be a teacher and how to prepare for your professional career.

Where you'll learn

Placements

- > If you choose our Ambition partner, **you'll do most of your training in just one of our schools.** This will be known as your main placement school and will also be the same school your mentor is based in. We hope that this school will feel like **your school**. You'll feel like you belong, and that means feeling and being like part of our team. We typically work with Thomas Clarkson in Wisbech, Chantry Academy in Suffolk, Neale Wade in March and Abbey College in Ramsey. Of course, lots of trainees are placed in Cromwell in Chatteris too. A short second school placement will take place in the summer term. We can also place trainees who also have a placement contact in mind or are an existing UQT in a school and wish to train on our salaried route.
- > If you choose our UoB partner, **you'll get a longer time in a second placement school.** This allows you to get a broad experience of a **contrasting placement** and provides trainees with an opportunity to understand similarities and differences between establishments. This can be helpful when trainees wish to sample more organisations in order to understand where they might wish to begin their career. Usually, we use an A-B-A model which means you'll be placed in your 'main' school for the first and third terms and a second school between Christmas and Easter. The schools we typically work with are again Thomas Clarkson in Wisbech, Neale Wade in March, Abbey College in Ramsey, Sir Harry Smith in Whittlesey and of course, Cromwell in Chatteris. We have the ability to be flexible with this exact dates and times with this model wherever it helps trainees.

Professional Studies

- **If you choose our UoB partner**, you'll complete studies with our team at Cromwell as well as each Friday at the University campus in Bedford. **If you choose our Ambition partner**, you'll complete your studies with the team at Cromwell on Wednesdays. We are delighted to be able to offer two routes and trainees often like to talk to us about which route might be best for them. Call or email us and we can help you meet your preferences.

Specialist placement days

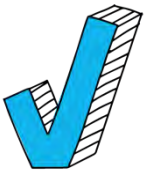
- > We'll also help you to arrange a number of specialist placement days for you across the year. They might be:
 - A KS1 or KS2 (Primary) school setting.
 - A pupil referral unit for children who are unable to attend a mainstream school.
 - A special school for children who have learning difficulties.

Together, these placements will expose you to, and allow you to, gain experience across a diverse range of settings and prepare you for a wide range of experiences from which you will decide which type of school you see yourself working in as a qualified teacher.

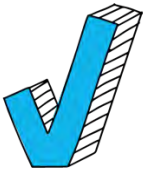
How you will learn

As you progress through your studies, you'll be introduced to current educational theories underpinning good classroom practice. You will then learn step-by-step how to apply these ideas in your own classroom. Our Teacher Training will use the following methods to help you achieve this.

Independent study



Each week you will do independent study where you will be exposed to academic theory. This will boost your knowledge within a specific area. For example, you might spend some time reading about the science of learning. Lots of your study resources will be hosted on our online learning platform, which will break content down through videos, quizzes, and examples.



Weekly expert-led clinics

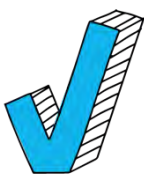
You will also attend weekly clinics with other trainee teachers. These are small-group sessions which give you the opportunity to take a complex area of teaching and unpick it with the help of education experts.



Deliberate practice

Many new teachers struggle to bridge the 'knowing doing gap', meaning they can sometimes struggle to translate new knowledge they have learned into action in the classroom. That's why deliberate practice is such a big part of our programme. Instead of trying out a new strategy for the first time live in a classroom, you will get to practise in a safe space first. This might mean standing up and rehearsing an explanation in front of your mentor.

Each time you practise, you will get bite-sized pieces of feedback from an expert. You will use this feedback to make small changes and can have another go straight away. This will allow you to develop good habits so that you feel confident when it comes to teaching in front of a live class.



Chunked learning

Our learning introduces new and difficult ideas slowly and in broken down chunks. Our online learning platform also gives you the ability to revisit topics, allowing you to refresh your understanding if needed.

How we will support you



In-school mentor

When you begin your training, you will be assigned a designated mentor. They will be an experienced teacher in your main placement school. They'll be your go-to person and support your journey on the road to becoming a teacher. You will have scheduled time with your mentor every week, but you will probably talk to them every day about how you're getting on.



90 minutes a week of protected time with your mentor

You'll meet your mentor for at least 90 minutes each week. This is protected time and is designed to help support you. In these sessions you'll have structured coaching conversations with your mentor. They'll help to you to prepare for the lessons you'll be teaching later that week.



Workload and wellbeing support

We understand how important it is to support you with your wellbeing whilst you're training. That's why 30 minutes of mentoring time each week will be dedicated to discussing workload and well-being.

The qualifications you will gain

You will complete a number of PGCE assignments across the year which will be marked by university tutors.

At the end of the course, you'll receive Qualified Teacher Status (QTS) and a Postgraduate Certificate of Education (PGCE). QTS is a nationally recognised teaching qualification which will allow you to teach in many schools in England. The PGCE is an internationally recognised qualification which will allow you to teach overseas should you choose to do so.

Your PGCE will also give you credits if you want to complete a masters in the field of education later in your career.

The funding you could receive

Tuition fees

Tuition fees for our Teacher Training programme are £9,535 for full-time study and £14,290 (£7,145 pa) for part-time study. You can apply for government funding to cover the costs of your tuition fees.

Maintenance loan for 2025 to 2026

You may also decide to apply for a maintenance loan of up to £13,762 to help you with your living costs.

- £8,877 if you live at home with your parents
- £10,544 if you live away from home and are studying outside of London
- £13,762 if you live away from home and are studying in London
- £4,461 if you're 60 years or over on the first day of the first academic year of your course

You can do this even if you already have a student loan, regardless of whether you get a teaching bursary or scholarship. You will then only have to make loan repayments once you are earning.

To find out more about tuition fees and maintenance loans visit

[Student finance for teacher training | Get Into Teaching GOV.UK](#)

Bursaries and scholarships

You may be eligible for a bursary or scholarship from the Department for Education which you would not need to pay back. This depends on which subject you choose.

Eligibility

You must be eligible for student finance to receive a bursary or scholarship. You can check your eligibility by visiting: www.gov.uk/student-finance/who-qualifies. The only exception to this is if you are training to teach physics or languages. Additionally, you cannot receive both a teaching bursary and a scholarship. You also can't receive a bursary or scholarship if you're on a salaried teacher training course.

Bursaries for 2025 to 2026

- £29,000 in Chemistry, Computing, Mathematics and Physics.
- £26,000 in Biology, Design and technology, Geography and Languages (including ancient languages).
- £5,000 in English.
- £10,000 in Art and Design, Music and Religious Education (RE)
- Applicants may be eligible for a bursary if they have First, 2:1, 2:2, PhD, or master's degree.

Scholarships for 2025 to 2026

- £31,000 in Chemistry, Computing, Mathematics and Physics.
- £28,000 in French, German and Spanish only

Scholarships are usually available to applicants with a First, 2:1, master's, or PhD degree, though, in exceptional circumstances, they may be awarded to a graduate with a 2:2 and significant relevant experience.

All bursaries and scholarships are tax-free. To find out more about these, visit:

[Student finance for teacher training | Get Into Teaching GOV.UK](#)