



Central Team

FINANCE TEAM



Phil Beecher
Director of Finance



Nikki Mayne
Assistant Director of Finance



Sam Elms
Head of Governance



Joanne Wadey
Trust Finance Manager
(Cams)



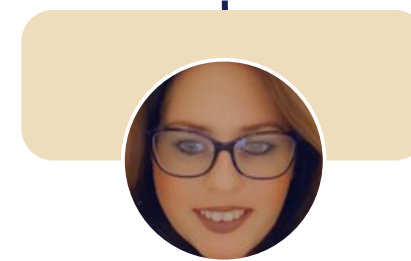
Mary Hook
Trust Finance &
Administration Officer



Paula Potter
Trust Finance Manager
(Suffolk)



Helen Curuk
Finance Officer



Robyn Jones
Finance Officer
(Maternity Leave)