



# Alsop High School

05/09/2025

Dear Parents and Carers,

As we embark on a new academic year, I want to extend a warm welcome back to all our students and families. The start of a new year is always filled with promise and potential for a fresh start. I hope that the long summer holiday has provided a well-deserved break and has enabled our students to return to school with renewed energy and determination to meet our high expectations and develop strong learning habits. Reflecting on the achievements of the last academic year, we are proud of the progress we have made although we recognise that we still have a lot to do to make this the great school that you and your children deserve.

Please find below some important updates

## **Staffing**

I am writing to inform you of an important staffing change. Our SENDCo, Mrs McLean, has moved on from Alsop High School as Mrs McLean decided to take on a new challenge in another school. We are extremely grateful for all her dedication and commitment during her time with us and wish her every success in her future endeavours. We have carefully planned to ensure there is no gap in support for our students with additional needs and therefore, I am pleased to announce that, on an interim basis, Mrs Avison will take responsibility for our SEND provision, supported by Mrs Wilkinson. Mrs Avison brings a wealth of experience and a strong understanding of the needs of our community. Should you need to contact our SEND team, they can be reached directly via their designated email address: [send@ahs.omegamat.co.uk](mailto:send@ahs.omegamat.co.uk)

## **Pastoral Care Year 7 - 13**

I have shared, at the end of this letter, the pastoral structure we have in place at school, to ensure that every student receives the right care, guidance and support throughout their time at Alsop.

Each year group is led by a dedicated, non-teaching Associate Assistant Principal and Year Manager, who provide pastoral support and guidance to the students in their year. In addition, each year group has a teaching Progress Leader, whose role is to ensure that students are supported academically and are ready to learn. If you need to contact any member of staff, email is always our preferred method. Please clearly state your child's name, year group, and the nature of your query to ensure we can respond effectively as possible.

## **Open Evening – Thursday 25<sup>th</sup> September**

The school's annual Open Evening will take place from 4:00pm to 6:30pm on Thursday 25<sup>th</sup> September. To allow staff time to prepare each area for the event, students will be dismissed **at 2:00pm**.

## **Year 7**

I would like to take this opportunity to welcome our new Year 7 families to Alsop High School and it has been great to see them settle in so well. As you are already aware, Alsop High School's Learning Habits provide a framework to ensure our core values are embedded within our daily practice. Every student is expected to uphold these values, which can be found on our [website here](#)

## **Mobile phone free school**

As you are already aware, we have made the decision to make our school a phone-free space. This decision is aimed at supporting our students' well-being and enhancing their learning. The system we have introduced will ensure students can continue to have their phones for use on the way to and from school as long as they are invisible during our school hours. Please continue to support this initiative



# Alsop High School

## Parking

We kindly ask that parents avoid collecting their child directly at the school gates. With over 1,300 students leaving the site each day, it is important that we have enough space for everyone to exit safely. As a gentle reminder, cars should not be parked on the zig-zag lines outside school at the end of the day.

If you collect your child by car, please consider arranging a meeting point a short walk from school. This helps ease congestion and makes the area safer for all, especially when almost 1,300 students are leaving the building. Thank you for your continued support in helping us keep our students and the wider community safe.

## Learning Habit: Perfect Uniform

As you are aware, school's drive to raise standards continues and we have high but not unreasonable expectations. We really appreciate the support that we have had from parents and carers at the start of the new academic year and we thank you for working with us. We are incredibly grateful for the ongoing support of our parents and carers and since returning on Wednesday, we are delighted to have been able to provide over 150 pairs of shoes to support our families and students. For the very small number of students who still do not have appropriate school shoes, we will continue to respond with kindness and fairness, and we will offer the appropriate support to parents where needed. Information on our uniform and acceptable shoes can be [found here](#). If any parent anticipates difficulty in meeting this expectation, please contact your child's Year Manager or Miss Bayly at [c.bayly@ahs.omegamat.co.uk](mailto:c.bayly@ahs.omegamat.co.uk) and we will be happy to explore ways to support you.

## Learning Habit: Equipment

At the start of term, we provided all students with the following essential equipment. We kindly ask for your support in ensuring your child continues to bring these items into school each day: Pencil case, Black or Blue pen, Red pen, Pencil, Ruler, Rubber and Highlighter. Thank you for working with us to help your child be fully prepared for learning.

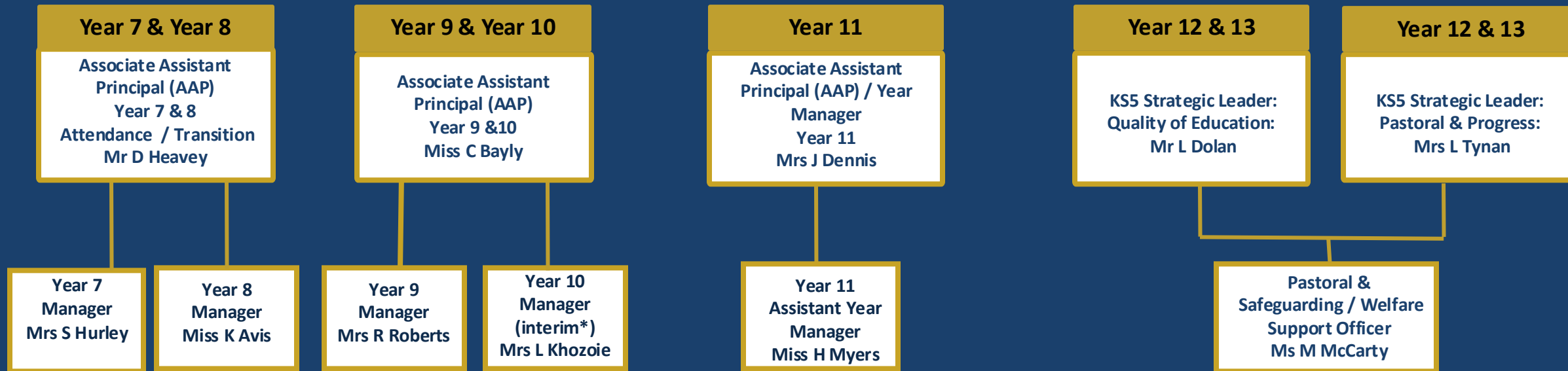
## Learning Habit: Punctuality and Attendance

There is a clear and proven link between attendance and student outcomes at GCSE. Our expectation at Alsop High School is that all students attend 100% of the time. There is no reason for our students to attend less than their peers in other schools across the country. As we review the successes of our 2025 cohort, those with the highest attendance achieved the best grades. The start of a new school year is the perfect time to work together to break any old habits and establish positive routines that support 100% attendance. May I also remind you that our breakfast club begins at **8:00am** and tutor time starts promptly at 8:27 a.m. All students are expected to be on site by this time.

Finally, it has been wonderful to see our students return and see their smiles, positive interactions, and enthusiasm. We are delighted to welcome them back into the Alsop community.

Best wishes,

Mr Mee  
Head of School



- To lead operational pastoral support in school with parents/carers.
- To manage morning routines.
- To lead morning attendance systems for each year group.
- To drive the school culture & behaviour standards (Pastoral Clarity Cards).

\* Miss S Lake (Year 10 Manager) is on a temporary leave of absence until the end of the Autumn Term

## Progress Leaders Team Structure 2025/26



- To drive academic progress & standards.
- To work alongside the school's pastoral team to uphold culture & behaviour standards, including, uniform, attendance, punctuality, attitude to learning & classroom management.
- To ensure the pastoral, personal development & reading curriculum is strong during form time.
- To coordinate & lead events for each year group.