

Virtual Groups

We offer virtual groups for families in Lancashire. You can access 'live' timetabled sessions or watch pre-recorded ones in your own time. For more information see our website.

Get in touch

You will receive information about the School Nursing Service via your child's school or you can contact us using the information provided below:

Lancashire Healthy Young People and Families Service (LHYPFS)

t: 0300 247 0040

w: lancsyounpeoplefamilyservice.co.uk



SCAN ME

Scan this code to contact us via Chat Health, for anonymous advice Mon-Fri 9-5

Scan here to access our website



care·think·do

WE CHANGE LIVES BY TRANSFORMING HEALTH AND CARE

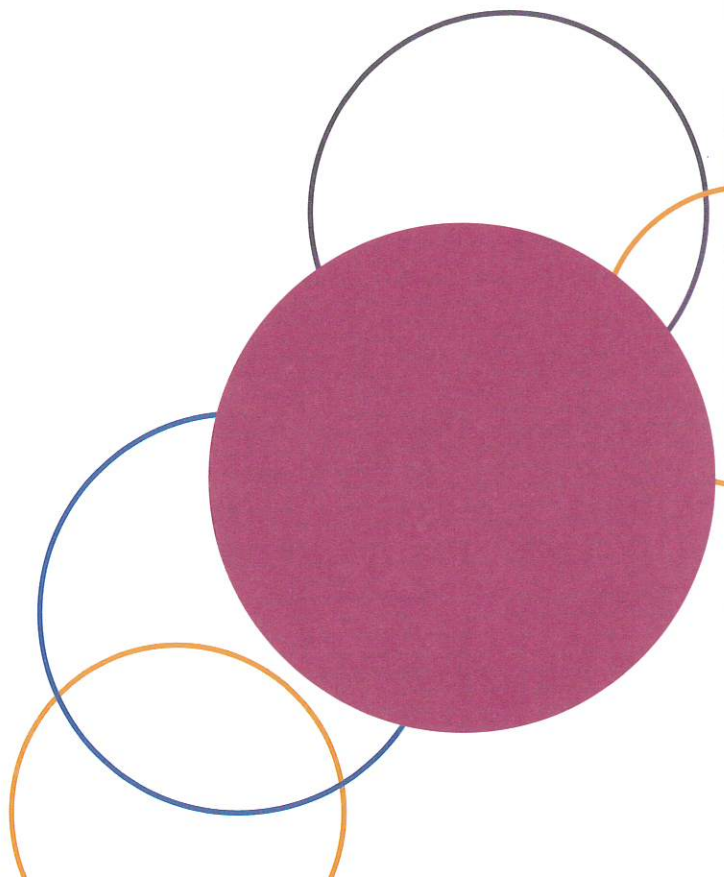


Lancashire Healthy Young People and Families Service (LHYPFS)

School Nursing

Information on the School nursing service in Lancashire*

*Not including Blackpool, Blackburn & Darwen



About Us

School Nurses are Registered Nurses who have a graduate level qualification in public health and the health needs of school-aged children & young people. Their fundamental role is to improve children and young people's health and wellbeing.

School Nurses are responsible for delivering the Department of Health recommended Healthy Child Programme (HCP) 5–19. This includes promoting the health, wellbeing and protection of all children and young people of school age (up to 19 years old), working with education colleagues and the wider multi-agency team and helping to improve public health outcomes for children, young people and families. School Nurses are also responsible for delivering the National Child Measurement Programme (NCMP) in reception and Year 6 and the Health Needs Assessments (HNA) in reception, year 6 and Year 9.

The School Health Team also includes: Community Staff Nurses and Healthy Family Support Workers (HFSW) who play an integral role in the delivery of the service.

The School Health Team usually sees children at school or college but may occasionally see them in the home or other community settings.

The school nursing service has two teams for service delivery.

Universal Reach Team:

This team will deliver a universal service to all children and young people with a focus on public health interventions and assessment of health needs. This includes a named link school nurse to each school/college, delivery of the School Health Needs Assessment process and the National Child Measurement Programme in line with the Healthy Child Programme.

Specialist Services Team:

This team will be responsible for providing support to the most vulnerable children and young people. Although not directly linked to individual schools, the practitioners will work closely with staff in the relevant schools/colleges for which these children and young people attend. The team will attend identified Child Protection, Child in Need meetings, undertaking individual health assessments and providing identified packages of care.

The School Health Team works together with other agencies and as part of a wider interdisciplinary team to support the health and wellbeing of school-aged children.

You will be sent information about NCMP and HNA when this takes place.