

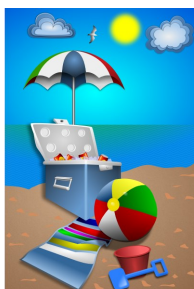
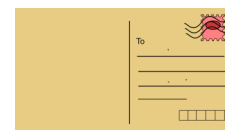
Tell me about a visit to the seaside. You can use photographs to help.

Use our What? Where? When? How? Who? question words to help organise your information.



If you are able to complete any please bring into school, send in a photograph, or upload to Dojo or Tapestry.

Write a message in a bottle or a postcard.



## Park Fell

Long Term Homework

Topic: **I wonder what we will find at the Seaside**



Create a piece of art work about the seaside. This could be anything, use your imagination.



Continue to support your child's reading and writing with the RWI books, red words and writing opportunities.

Design your own sea creature.

