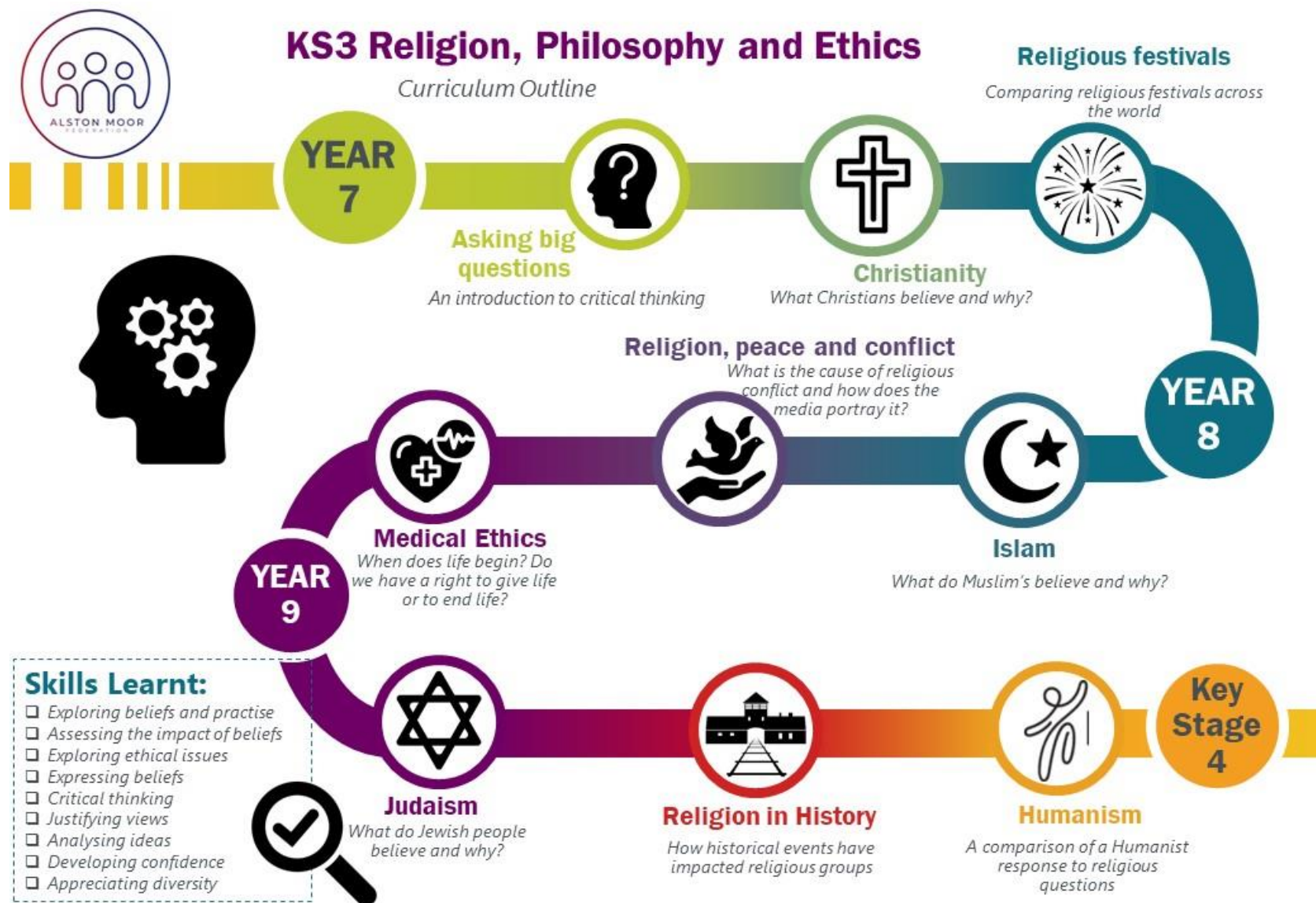


How is the RPE curriculum structured at SKS?



Why is RPE important?

RPE exposes students to different ways of thinking possibly not available at home, or even elsewhere in the curriculum. The subject helps them to develop their own critical thinking skills, and covers a wider range of religions or different viewpoints than parents are likely to have knowledge of.

What is the aim of the KS3 RPE curriculum at SKS?

Religion and beliefs inform our values and are reflected in what we say and how we behave; however too often we are not given the chance to wonder. In Religion Philosophy and Ethics we provoke challenging questions about the ultimate meaning and purpose of life, beliefs about God, the self and the nature of reality, issues of right and wrong, and what it means to be human. Through studying different religious and philosophical ideas we encourage students to consider their beliefs and how these might affect the choices they make; as well as encouraging them to understand the significance of religion in the lives of others – individually, communally and cross-culturally.