



# Archbishop Temple Church of England High School

## Matthew 28:16-20 - The Great Commission

<sup>16</sup> Then the eleven disciples went to Galilee, to the mountain where Jesus had told them to go. <sup>17</sup> When they saw him, they worshiped him; but some doubted. <sup>18</sup> Then Jesus came to them and said, "All authority in heaven and on earth has been given to me. <sup>19</sup> Therefore go and make disciples of all nations, baptizing them in the name of the Father and of the Son and of the Holy Spirit, <sup>20</sup> and teaching them to obey everything I have commanded you. And surely I am with you always, to the very end of the age."



## Message from Mr Catlow

### Bridge Improvement Works

I would like to give parents advance notice of some improvement works that will take place at the entrance to the school campus between 29 June and 24 July.

You may notice contractors working around the bridge during this period. Please be assured that these works are not being carried out because the bridge is unsafe. The bridge remains perfectly safe to use. The project is designed to future-proof this area of the site by removing the need for the bridge altogether through the filling of the gap it currently spans.

Importantly, there will be no impact on access to or from the school site, and our normal arrangements for pupils, staff and visitors will remain unchanged. The only significant impact will be that the contractors will occupy the area currently used by parents for parking adjacent to the exit onto St Vincent's Road. We would therefore ask parents to make alternative parking arrangements during this period.

Thank you for your patience and support while these improvements are completed.

## Headteacher's Pupils of The Week

Thomas C	7I	Commitment to school teams
Franklin V	8U	For his respectful attitude
Oliver F	9H	Outstanding sporting achievement
Emily P	10I	Service to the school
Ella F	11T	For showing great resilience

## Weekly News

### Duke of Edinburgh Practice Expedition

Over the weekend of 16–17 May 2026, Archbishop staff took 51 pupils on their Duke of Edinburgh Practice Expedition at Borwick Hall.



Throughout the weekend, pupils developed and demonstrated a range of expedition skills, including hiking, outdoor cooking and orienteering. Working together in their teams, they navigated planned routes, prepared meals in the outdoors and gained valuable experience of expedition life.

Despite encountering a few showers along the way, the pupils remained positive and resilient, not allowing the weather to dampen their spirits. Their enthusiasm, teamwork and determination were evident throughout the expedition, and they should be extremely proud of their efforts.



The practice expedition provided an excellent opportunity for our young people to build confidence, refine their skills and identify any areas for improvement ahead of their assessed expedition.

**All pupils are now thoroughly prepared for their Duke of Edinburgh Qualifying Expedition, which will take place on 27th June 2026. We wish them every success and look forward to seeing them put their hard-earned experience into practice.**



## Sports Update

This week our rounders teams competed in their 2<sup>nd</sup> round of fixtures against Corpus Christi, with wins for our year 7, 9 and 10 teams. Well done to our players of the match: Martha H, Amelia C, Charlotte P and Beth H. We wish the year 10's luck next week in their final rounders tournament at Archbishop Temple.



The boys cricket season is in full flow with teams from Y7, Y8, Y9 and Y10 competing in the Preston and Lancashire competitions. Year 7 have had a very strong start with wins against Lancaster Grammar, Taheedul and a draw against Stonyhurst. Added to this the year 7s won the Indoor Cricket Competition staying undefeated throughout their 5 games and winning a thrilling final against St Cecelia's. Standouts have been Oscar W, Rayhan H and Josh E. Year 9 have so far played Hutton and Bowland school in the Lancashire cup with standouts being Tom S and James W.

The Athletics Club has been busy this week with pupils attending lunchtime and after school sessions to attempt to secure a place on the athletics team for the Town Sports Annual Athletics Competition. We wish the best of luck to all our athletes representing Preston in the Lancashire School Athletics Championship at [UCLan Sports Arena](#) in Preston on Saturday, 13th June 2026.

As we head into the final half term of the year, we would like to remind parents and pupils of the sports club we have on offer for anyone to come and participate in.

When	Venue	Monday	Tuesday	Wednesday	Thursday	Friday
Lunch	Astro	Y7 Cricket (DT)	Y9 Cricket (DT)	Y8 Cricket (AG)	Y10 Cricket (AG)	Girls Cricket (AL)
Lunch	Grass		Y9 & Y10 Rounders (EW)	Y8 Rounders (DT)	Y7 Rounders (AL)	
Lunch	Main Hall	Dance Club (EW)				
After School	Various	Athletics Club (All)		Netball (AL) *Check in case fixtures are on		

# YOUNG MUSICIAN COMPETITION 2026

FRIDAY 19<sup>TH</sup> JUNE



**INDIVIDUAL ENTRY**  
(CAN USE BACKING TRACK)  
**LIMITED SPACES**  
**PERFORM ONE PIECE OF MUSIC**  
**APPLY NOW!**




[Click on the above image to apply](#)

Archbishop Temple Church of England High School

# Attendance Matters

Friday
June 5<sup>th</sup> 2026
Issue #19

### EVERY SCHOOL DAY COUNTS

**PUNCTUAL**

- Arrive at school on time
- Arrive to lessons on time
- Aim for 100% attendance

**Daily lateness equates to...**

3	5 minutes late = 15 hours of learning lost 3 days of learning lost
6	10 minutes late = 30 hours of learning lost 6 days of learning lost
10	15 minutes late = 50 hours of learning lost 10 days of learning lost

100%	Excellent attendance! Our aim for all students.
6 DAYS ABSENCE	30 hours of learning lost. On the right path - keep it up!
10 DAYS ABSENCE	50 hours of learning lost. Poor attendance gives you less chance of success.
19 DAYS ABSENCE	95 hours of learning lost. Poor attendance gives you less chance of success.

Excellent	100%
Well Done	97%
We're Concerned	95%
Seriously Concerned	90%

All Day, Every Day

## Top Attendance Forms By Year

**Year 7: 7L – 95.9%**

**Year 8: 8P – 92.3%**

**Year 9: 9L – 94.4%**

**Year 10: 10T – 94.3%**

**Year 11: 11I/11H – 94.2%**



It's lovely to welcome everyone back after the glorious half term, hope you all enjoyed the weather.

We've gone straight back in to GCSE exams this week, but only another week or so to go. Year 7 and Year 8 exams start next week, so make sure your child is in school every day so nothing gets missed.

Attendance is everyone's responsibility — from leadership and pastoral care, to tutors and support staff — with parents and pupils as essential partners. Rooted in Faith, strengthened through Nurture, and lived out in Service, we work together to ensure every child shines God's light by being present, engaged, and thriving in school.

**Attendance is a shared responsibility — no single individual has sole ownership:**

- Leadership provides strategy
- Attendance administration provides data and tracking
- Pastoral staff provide relational support and intervention
- Parents are partners
- Students are active participants

### Absences:

Absences can be reported using Synergy. If you look on Synergy there should be an option to create new message in the Inbox section of the app, relevant evidence can also be attached.

### Medical Appointments:

- Whenever possible, schedule appointments outside of school time
- Avoid making appointments between 8:20am – 9:20am, or 12pm – 1pm
- For any appointments during school time, please provide evidence such as an appointment confirmation



If you have any attendance related concerns please get in touch, we are always here to help in any way we can!



## Archbishop Temple Church of England High School

Former Archbishop Temple Church of England High School pupil, Nathanael Clayton-Summers celebrated his Duke of Edinburgh Gold Award at Buckingham Palace Garden Party on 22<sup>nd</sup> May.

Nathanael completed his Bronze Award at school in 2022 before going on to complete his Silver and Gold Awards.

Nathanael is now at Keele University living his best life as a Geology undergraduate and is climbing Mt Kilimanjaro in August for meningitis.



## Careers - Next Week:

Year 10 one-to-one careers appointments are currently being scheduled. Pupils will receive notifications regarding the date and time of their individual careers meeting.

## Charity Update so Far this year...



**Lots of fund raising expected this half term...it would be great if we could reach £5000 in total for our Year Group Charities**

## Religious Education

As we begin the final term of the academic year, many classes are commencing their final unit of study. Each new unit provides an exciting opportunity to explore not only the subject content itself but also the many ways in which it can connect to future careers and opportunities.

In Religious Education, the transferable skills students develop are valuable across a wide range of professions. At the start of every unit, we consider how the knowledge and skills we are

learning can be applied in different career pathways. This helps students recognise the relevance of their studies beyond the classroom and challenges common misconceptions about the subject.

Skills such as empathy, critical thinking, cultural awareness, and an understanding of different belief systems help students develop a broader understanding of the world around them. These qualities not only contribute to their own personal worldview but also enable them to better understand and work with others.

In an increasingly diverse and interconnected world, these skills are highly valued in many areas of life, including the workplace. As we embark on our final units of the year, we look forward to continuing to make these meaningful connections and helping students appreciate the important role Religious Education can play in their future lives and careers.

### Why do we study RE?

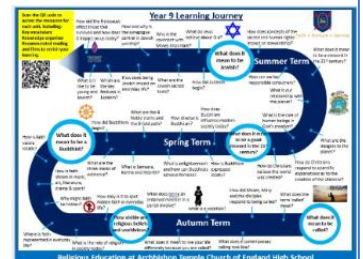
Look at your learning journey in the front of your book.



Talk with the person next to you:  
Why do you think we are studying this topic?


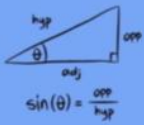




How can our learning in RE link with other subjects in school? Can you think of any topics that you have studied recently?

What skills and knowledge could we learn that might help us in the future?

What careers or further study could RE lead to?



 **Mathematics Pupil of the Week** 

  	<p>Y7 Mohmed K</p>	<p>Y8 Charitee L</p>	 
	<p>Y9 Wendy M</p>	<p>Y10 Emily G</p>	

### Some Headline Events

<b>Monday 8<sup>th</sup> -12<sup>th</sup> June</b>	Year 7 & 8 Exam Weeks
<b>Monday 15<sup>th</sup> June</b>	Year 10 Runshaw College Taster day
<b>Thursday 18<sup>th</sup> June</b>	Year 11 last day
<b>Friday 19<sup>th</sup> June</b>	Young Musician Competition
<b>Tuesday 23<sup>rd</sup> June</b>	Preston City Sports Day
<b>Wednesday 24<sup>th</sup> June</b>	Year 10 Newman College Taster Day
<b>Thursday 25<sup>th</sup> June</b>	Hutton Sixth Form/Preston College Taster Day
<b>Friday 26<sup>th</sup> June</b>	Sports Day
<b>Monday 29<sup>th</sup> June</b>	Year 9 Holocaust Survivor Speaker
<b>Wednesday 1<sup>st</sup> July</b>	Performing Arts Showcase Evening
<b>Thursday 2<sup>nd</sup> July</b>	Year 6 Taster Day
<b>Thursday 9<sup>th</sup> July</b>	Annual Shine Awards 2025-26 @ St Cuthbert's Church
<b>Friday 10<sup>th</sup> July</b>	Year 9 Virtual Reality Holocaust experience
<b>Wednesday 15<sup>th</sup> July</b>	Pupil Rewards Trip
<b>Thursday 16<sup>th</sup> July</b>	School Closes at 12:30pm for Summer Break

## Important Dates for your Diary

---



[Calendar | Archbishop Temple Church of England High School](#)