



# Arnold Mill Weekly Newsletter - 13th January 2023



---

*Dear Parents/Carers,*

*Well, that's the end of the first full week of this term. The children have settled back into their routines nicely and clubs have now started back. I would like to welcome the new children in nursery who started this week.*

*We have a busy week next week, with class 1a's assembly for parents to attend, a special children's choice lunch, a drama workshop for Foundation and Key Stage 1 and library visits for classes 2e and 2f. All dates are listed towards the bottom of this newsletter.*

**Jackie Oldfield, Head Teacher**

---

## Children's Work

What?	Geography: To locate and label key parts of Greece.	Why?	So I can understand where Greece is in the world.
Pupil	How do I know I have been successful?		Adult
0	<input checked="" type="checkbox"/> I can locate Greece in an atlas. <input checked="" type="checkbox"/> I can label neighbouring countries. <input checked="" type="checkbox"/> I can label seas and oceans. <input checked="" type="checkbox"/> I can use a key to label a map.		<input checked="" type="checkbox"/> SH <input checked="" type="checkbox"/> G <input checked="" type="checkbox"/> P

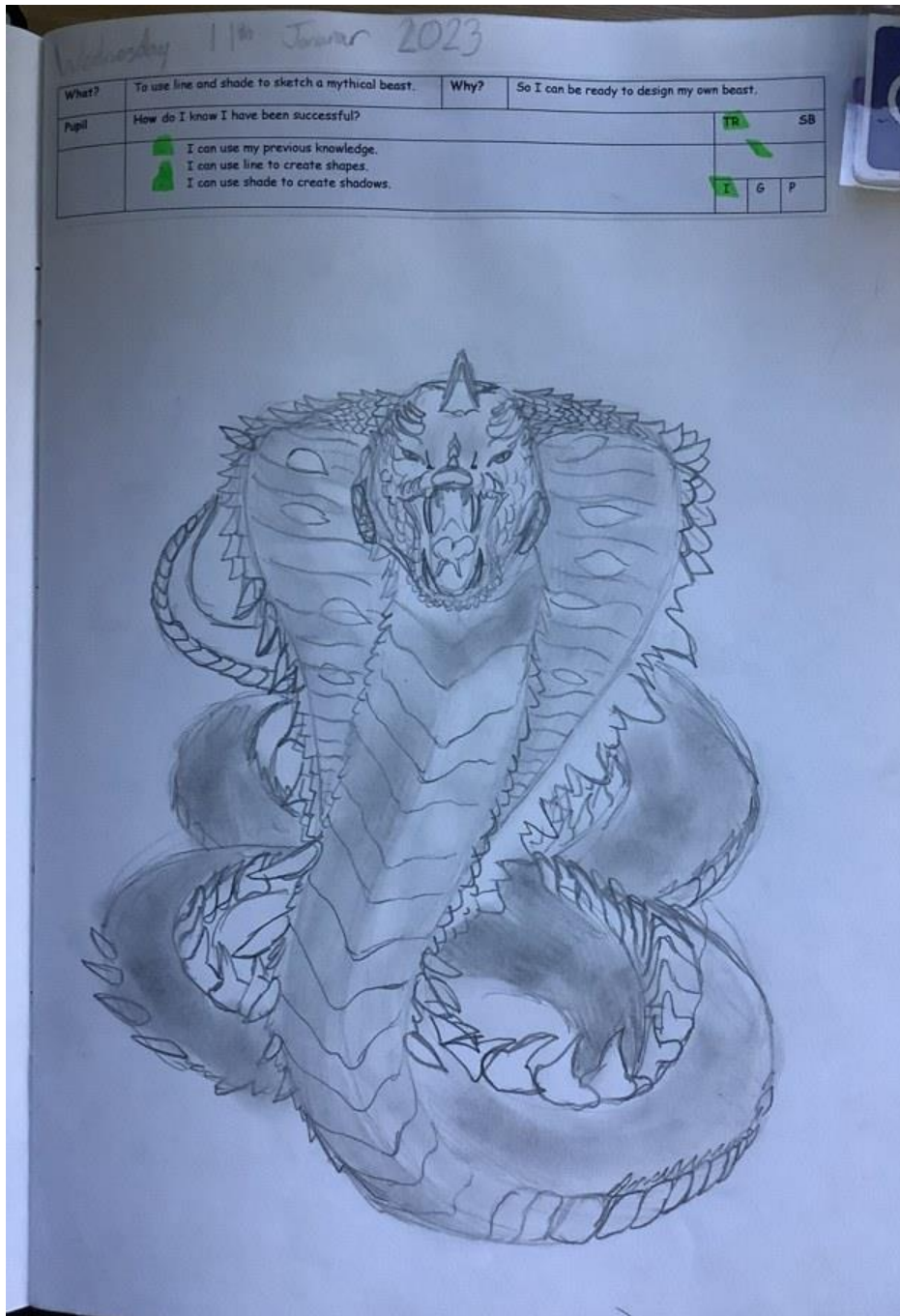
  

✓ → What part of Europe is Greece situated in?  
 Southern Europe.

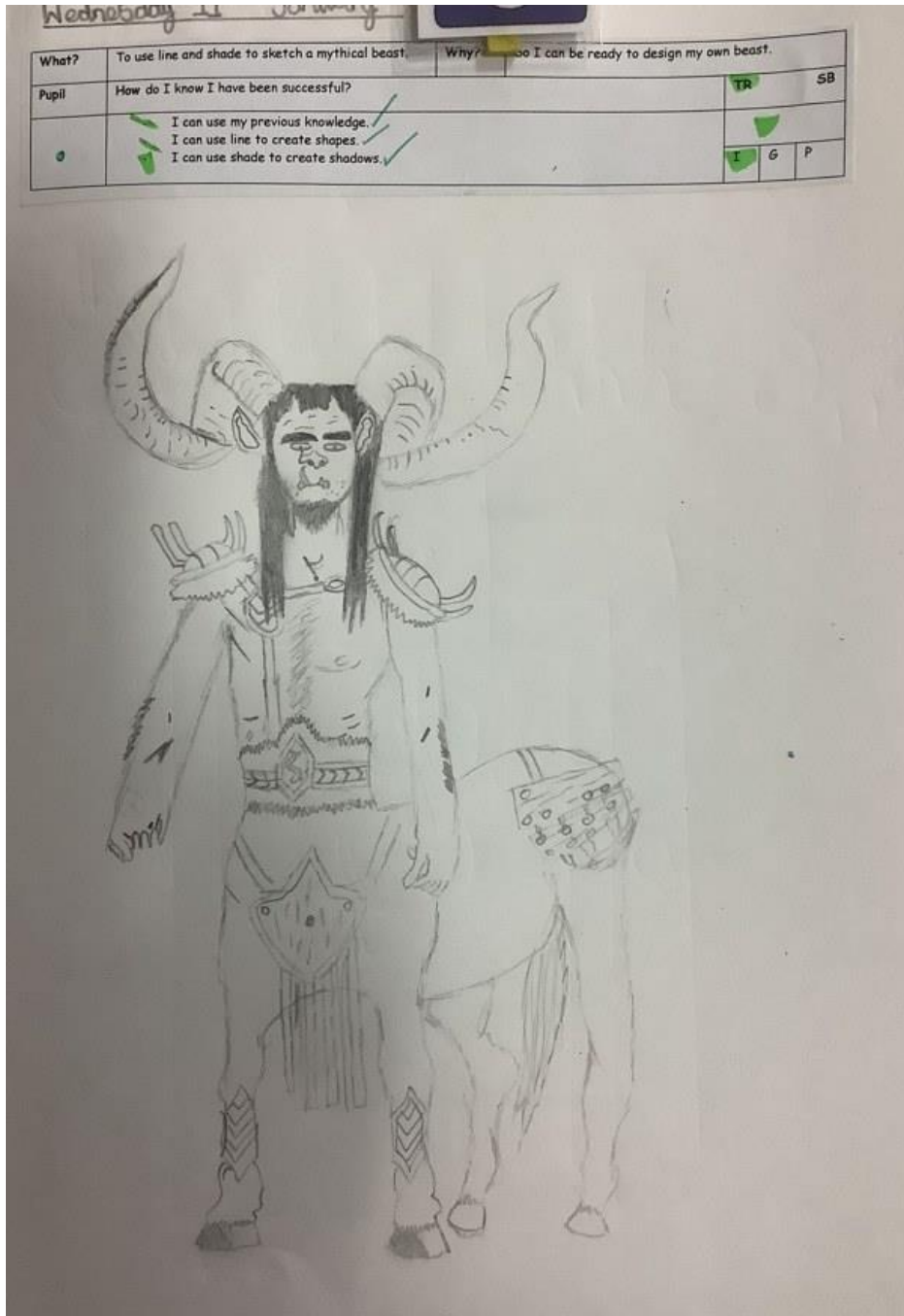


2 - Viking boat - 2f





3 - Drawing of a mythical creature - 2e



4 - Drawing of a mythical creature - 2e

## Nominations Open for New Parent Governor

We are currently looking for a new parent governor. We would particularly be interested in nominations from parents with finance experience. Please use this link to read the [letter to parents](#) and this link to view the [Eligibility Criteria](#).

If you wish to nominate yourself, you can do so using this [Link to Nomination Form](#)

The deadline for nominations is **Monday 23rd January at 10.00am**. If we have more than one nomination, a parent election will take place.

---



## Deadline for applying for a school place



The deadline for applying for a school place in Reception for September 2023 is **Sunday 15th January**. If you haven't already applied, you can visit [Nottinghamshire County Council Admissions](#) for more information.

---

## Winter Essentials Pop Up Café



## National Storytelling Week - w/c 30th January 2023

---

*To celebrate storytelling week, taking place from 30th January to 5th February 2023, we have some exciting reading activities throughout the week. This includes the chance to join a live storytelling event with professional storyteller and author, Wendy Shearer, on 30th January, suitable for KS1 and KS2.*

*If you would like to get involved with National Storytelling Week at home there are resources to help families enjoy the age-old tradition of storytelling and share their own stories, memories, and experiences. See the link below to access these:*

**[Link to My Storytelling Scrapbook](#)**

*Please feel free to send any pictures of your children reading for pleasure at home and taking part in National Storytelling Week!*

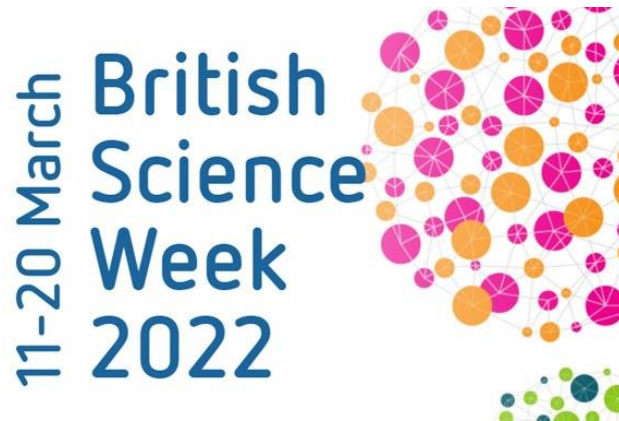
*Happy Reading*  

*Mr Hewlett, Deputy Headteacher*

---



## Calling all Scientists



---

*As part of British Science Week, we are asking for parents/carers to get in touch if they work in a science related career.*

---

## Choir Club

---

*We have had a very small uptake for our choir club and we would therefore like to open up the club to new participants from years 1-6. If you would like your child to join, please complete the form using this [Link to form](#)*

---





## Change of Menu - Tuesday 17th & Thursday 19th January

---

*Next Thursday is the Spring School Census. The money the school receive from the government to pay for the Universal Infant Free School Meals is based on an average of the number of meals taken on the census days in October and January. It would really help us if your child was to have a school meal on this day.*

*To encourage children to join us for school lunch, we are offering a special menu which the children have requested.*

*As a result of this change, we will be serving Roast Pork on Tuesday instead of Thursday. Please see the revised menus below.*

---



**AUTUMN/WINTER 2022/23**  
**WEEK 2**  
 WEEK COMMENCING 16th January 2023  
 Change of Menu

**MY SCHOOL MENU**

**TASTE of NATURE**

**FOOD ON THE MOVE**

Vegetarian meals are available upon request

	MAIN MEAL	DESSERT
<b>MONDAY</b>	Quorn dippers jacket wedges cucumber sticks sweetcorn  Milk Egg Gluten	Cherry shortcake & custard OR Fruit  Gluten Milk
<b>TUESDAY</b>	Roast pork, stuffing & gravy, roast potatoes Yorkshire pudding carrots & broccoli  Milk Egg Gluten	Fruit salad OR Fruit
<b>WEDNESDAY</b>	Cheesy tomato pasta garlic bread coleslaw cucumber sticks  Gluten Milk Soya Egg	Cornflake tart & custard OR Fruit  Milk Gluten Sulphur Dioxide
<b>THURSDAY</b>	<b>Children's Choice Menu:</b> Hot dogs, chips, peas and sweetcorn  Gluten, Milk, Sulphur Dioxide	Chocolate Chip Muffin  Gluten, Eggs, Dairy
<b>FRIDAY</b>	MSC Jumbo fish finger wrap Pommes noisette peas & sweetcorn  Gluten Fish Mustard Milk	Honey & oatmeal cookie & apple wedge OR Fruit  Gluten

ALSO SERVED DAILY: Best of both bread Gluten and Soya Seasonal vegetables available daily Coleslaw Egg when served.

[www.nottinghamshire.gov.uk/schoolmeals](http://www.nottinghamshire.gov.uk/schoolmeals)

**Nottinghamshire County Council**

## 'Including Parents' Conference - 7th March 2023



Please use the link below to see a leaflet about the 'Including Parents' Conference.

This is a free conference for parents and carers of children and young people up to the age of 19 with additional needs, who are resident in Nottinghamshire or whose child attends a Nottinghamshire school.

[Link to leaflet](#)

## Author Visit to BÜK, Calverton Road, Arnold



The collage features a grid of 30 book covers by Tom Palmer, arranged in 6 rows and 5 columns. The books include titles like 'After the War', 'D-Day Dog', 'Arctic Star', 'Over the Line', 'Roy Rovers' (multiple titles), 'Football Academy', 'Foul Play', 'Deadlocked', 'Scrum!', 'Black Op', 'Write Fear', 'Ghost Stadium', 'Secret 77', and 'Football'. To the right of the grid is a photograph of Tom Palmer standing on a stage in front of a large audience, holding a book. Next to him is a large poster for his book 'RESIST'.

**Come and meet...**  
**Tom Palmer**  
**Mon 16 Jan**  
**4-5pm**

*BÜK*  
*Event!*



## Appeal for Unwanted Christmas Items



---

*Does anyone have any unwanted/pre-loved Christmas presents, Christmas jumpers, pyjamas or decorations that they would be willing to donate to school please? If so, please drop them off at the school office during school hours. Please only donate things that in a good condition. Thank you.*

---



## Lost Property

---

*Please see the photos below for all lost property we currently have. For a more details of sizes etc click on the top left-hand corner. If you believe something belongs to your child, please contact the office. All named items are returned to class once a week. Please remember to label all property so that it is easier to return to the rightful owner.*

---



5 - Zara - size 7



6 - Unsure of size - label cut out



7 - Next Age 5



8 - Firetrap Size 9-10





9 - Tesco Size 8



*10 - 2 x PE bags*



*11 - Hot Tuna Size 9-10*



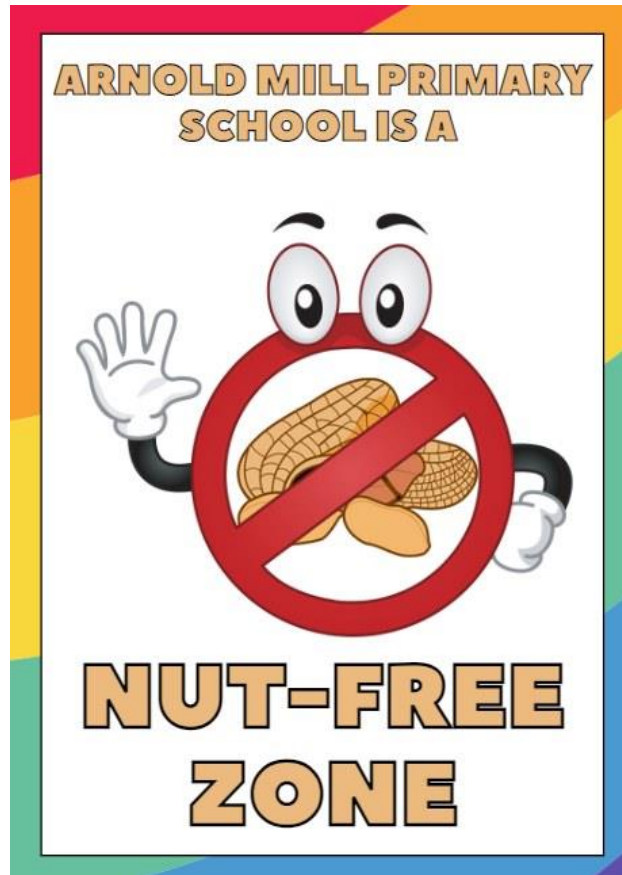
12 - Adidas Coat - Size 6-7





13 - F&F Size 6-7

## Reminder - We are a nut free school



---

*We have an increasing number of pupils in our school who have serious nut allergies. Anaphylaxis (allergic reaction) can occur as a result of **digestion, inhalation** or **any other contact** with nut-based products. For their safety, all nut-based products are banned from the school premises.*

*However, we have noticed a number of pupils bringing these items into school and therefore felt it was appropriate to send out a reminder to please not send your child into school with any nut-based product for packed lunch or for a special birthday treat– this includes products that may contain traces of nuts.*

***Potential allergens could include the following:***

---

- *Spreads, e.g. chocolate spread, e.g. Nutella*
- *Cereal bars*
- *Some types of biscuit containing nuts*

- Condiments, e.g. satay sauce
  - Cakes containing nuts
  - Some snack pots containing nuts
- 

*It is important that you check the labelling of food products before sending your child in to school with them – it is not always apparent that products contain nuts or traces of nuts.*

*We also ask that, if your child consumes any nut-based product before school, they wash their hands thoroughly. We understand that these measures may seem extreme; however, we want to ensure the health and safety of all our pupils, and some of the pupils with the allergy are severe enough that even the slightest of contact with nuts could cause a severe and potentially life-threatening reaction.*

*Due to the severity of the allergy, if any pupil is found with a nut-based product, the school will confiscate it and send it home at the end of the day.*

*Thank you for your cooperation with this matter.*

---

## School Clubs



#### School Clubs – Spring Term 2022/23

Day:	Club:	Organiser:	Times of club:	Year Group:	Number of places:	Parents to collect from:
Monday	Homework Club*	Mr Robinson	12.30pm - 1.00pm	Y5/6	N/A	N/A
	Photography Club	Mr Hewlett	3.30pm-4.15pm	Y1-Y6	15	2F
	Dodgeball Club	Mrs Greentree	3.30-4.30pm	Y3/4	20	Main entrance
	Gardening (from after February half term because of dark nights)	Mrs Hopewell, Mrs Humphrey, Miss Joynt and Ms Rose	3.30-4.30pm	Y3-6	15	School Library (off the playground)
	Netball (from after February half term because of dark nights)	Mrs Keeton	3:30-4:15pm	Y5/6	15	Main entrance
Tuesday	SATs Booster Y6 Reading*	Mr Hewlett	8.15am-8.50am	Y6	N/A	N/A
	Board Games Club	Mrs Rathore	3.30-4.15pm	Y1/2	12	2C
	TTRS*	Mr Booth	12.30 - 1.00pm	Y4	N/A	2E
	Choir	Mrs Oldfield & Mrs Monaghan	3.30pm- 4.15pm	Y3-6	30	2E
	French Club	Mrs Bennett & Mrs Nicholls	3.30pm-4.15pm	Y3/4	12	2F
Wednesday	Running Club	Mrs Greentree & Mrs Stones	3:30-4:30pm	Y5/6	25	Main entrance
	TTRS*	Miss Dibley	12.30pm - 1.00pm	Y3	N/A	N/A
	Boccia	Mr Knight and Mrs Greentree	3.30pm - 4.15pm	By invitation		Main entrance
Thursday	SATs Booster Y6 Maths*	Mr Hewlett & Mrs Nicholls	8.15am-8.50am	Y6	N/A	N/A
	Homework Club*	Mr Robinson	12.30pm - 1.00pm	Y5/6	N/A	N/A
	Book club	Mrs Oldfield & Mrs Stones	3.30-4.15pm	Y1-6	20	2F
	Kapla Club	Mr Phillips	3.30pm- 4.30pm	Y1/2	12	2E
	Dodgeball	Mrs Greentree	3:30-4:30pm	Y5/6	20	Main entrance
Friday	Homework Club*	Mr Robinson	12.30pm - 1.00pm	Y5/6	N/A	N/A
There are no after school clubs on a Friday						

\*No need to book

## Class 1a Assembly for Parents



### ***Class 1a Assembly – Thursday 19th January 2023 (booking essential)***

*We would like to invite Class 1a parents/carers to join us for the above assembly.*

*Due to health and safety reasons relating to the number of people in the Hall we have to limit the number of guests for the assembly to two per child. To ensure that we set out the correct number of guest chairs on the day please complete/submit a booking form by midnight on Wednesday 18th January via this link [1a assembly form](#)*

*We will not be issuing physical tickets as the booking form enables us to produce the guest list.*



*We would like to clarify the arrangements for the day as follows:*

---

- On the morning of the assembly we will set out the number of seats as requested via the electronic booking form.*
  - Doors open for guests at approx. 9.05am and the assembly is due to start at 9.10am*
  - Please note that the pedestrian gate on Bestwood Avenue is locked at 9.15am and will remain locked until 3.15pm.*
  - The main vehicular access gates leading to the staff car park remain closed during the day, if the vehicle gate happens to be open please do not park in the car park as you risk being locked in (the gates will remain locked between 8.30 and 9.10am).*
- 

***REMINDER - in line with our Safeguarding Policy and Social Media Parental Agreement, there should be no phones out during the assembly.***

---

## **Year 3/4 visit to Southwell Minster on Tuesday 28th February 2023**



---

*In support of our History topic on 'The Romans' we have arranged a visit to Southwell Minster. Southwell stands on the site of a Roman Villa - one of the largest in the country. Southwell Community Archaeology Group will be supporting us with our day and will be providing three hands-on sessions. These sessions will include archaeology, living history and a site walk.*

*The cost of the visit is £13.50 (payable on [ParentPay](#)) and includes the coach transport and the guided activities. The visit will take place within our normal school day (the coach will be leaving at 9.30am and returning at approximately 3.00pm). The children will need to wear school uniform and have a warm/waterproof coat, gloves, and hat please.*

*LUNCH ARRANGEMENTS - The children will need a packed lunch, including a drink (not fizzy or glass bottles please). This can either be home prepared or you can order a school packed lunch for £2.40 (payable on ParentPay [Dinner money account] unless your child is entitled to free school meals).*

*We will send home hard copy trip permission forms, medical information forms and confirmation of packed lunch arrangements (including how to order a school prepared lunch) for completion nearer the time.*

*Many thanks*

*Year 3/4 Team*

---

## Important Dates

---

### January

*Mon 16th Jan - Class 2f Visit to Arnold Library*

*Tues 17th Jan - Change of menu - Roast Pork*

*Weds 18th Jan - Class 2e Visit to Arnold Library*

*Thurs 19th Jan - Special Children's Choice Menu [Link to week's menu](#) [Link to Children's Choice Menu](#)*

*Thurs 19th Jan - Foundation stage/KS1 Drama Workshop*

*Thurs 19th Jan - 1a Assembly with parents ([Link to letter](#))*

*Mon 23rd Jan - Deadline for Parent Governor nominations (10.00am)*

*Mon 23rd Jan - 2d Visit to Arnold Library*

*Thurs 26th Jan - 2c Visit to Arnold Library*

*Mon 30th Jan - Sun 5th Feb - National Storytelling Week*

*Mon 30th Jan - Live Storytelling Event with author Wendy Shearer*

*Tues 31st Jan - 2b Visit to Arnold Library*

## **February**

*Fri 3rd Feb - 1c Visit to Arnold Library*

*Tues 7th Feb - F2b Visit to Arnold library*

*Tues 7th & Weds 8th Feb - Parents' Evenings*

*Fri 10th Feb - 1a Visit to Arnold Library*

*Mon 13th-Fri 17th Feb - Half Term Holiday*

*Tues 28th Feb - Year 3/4 Visit to Southwell Minster*

*Tues 28th Feb - F2a Visit to Arnold Library*

## **March**

*Thurs 2nd Mar - World Book Day*

*Fri 3rd Mar - 1b Visit to Arnold Library*

*Fri 10th Mar - 2a Visit to Arnold Library*

*Mon 13th Mar - F1am Visit to Arnold Library*

*Mon 14th Mar - F1pm Visit to Arnold Library*

*Mon 20th Mar - Y5/6 Greek Workshop ([Link to letter](#))*

## **April**

*Mon 3rd-Fri 14th Apr - Easter Holidays*

*Thurs 27th Apr - 1b Assembly with parents*

## **May**

*Mon 1st May - Bank Holiday*

*Weds 3rd-Fri 5th - Y3/4 Rand Farm Residential*

*Mon 8th May - Bank Holiday for King's Coronation*

*Tues 8th-Fri 12th May - Y6 SATS week*

*Thurs 25th May - Class 2b Assembly with parents (details to follow)*

## **June**

*Mon 29th May - Fri 2nd Jun - Half Term Holiday*

## **July**

*Fri 21st Jul - Last Day in School For Children*

*Mon 24th & Tues 25th Jul - INSET Days*

---



## **Useful info:**



Click through the sheets below for information about:

- Information Leaflet about Strep A

- Free school meals and milk
- Academic Calendar 2022-23 (including inset days)
- Link to school policies
- ParentPay
- Easyfundraising
- Amazon Smile
- Cost of Living Helpsheet
- Minor Ailment Scheme - help with cost towards medication
- Headlice - how to detect and treat

Just click on the symbol in the top left hand corner of the relevant sheet to find out more information on that subject.



14 - [Click for important information about Strep A](#)



15 - [Click here for information about free school meals and milk](#)



Nottinghamshire School Holidays 2022-23  
September 2022 to July 2023



September 2022	October 2022	November 2022
M T W T F S S 29 30 31 1 2 3 4 5 6 7 8 9 10 11 12 13 14 15 16 17 18 19 20 21 22 23 24 25 26 27 28 29 30	M T W T F S S 1 2 3 4 5 6 7 8 9 10 11 12 13 14 15 16 17 18 19 20 21 22 23 24 25 26 27 28 29 30 31	M T W T F S S 1 2 3 4 5 6 7 8 9 10 11 12 13 14 15 16 17 18 19 20 21 22 23 24 25 26 27 28 29 30
December 2022	January 2023	February 2023
M T W T F S S 1 2 3 4 5 6 7 8 9 10 11 12 13 14 15 16 17 18 19 20 21 22 23 24 25 26 27 28 29 30 31	M T W T F S S 1 2 3 4 5 6 7 8 9 10 11 12 13 14 15 16 17 18 19 20 21 22 23 24 25 26 27 28 29 30 31	M T W T F S S 1 2 3 4 5 6 7 8 9 10 11 12 13 14 15 16 17 18 19 20 21 22 23 24 25 26 27 28
March 2023	April 2023	May 2023
M T W T F S S 1 2 3 4 5 6 7 8 9 10 11 12 13 14 15 16 17 18 19 20 21 22 23 24 25 26 27 28 29 30 31	M T W T F S S 1 2 3 4 5 6 7 8 9 10 11 12 13 14 15 16 17 18 19 20 21 22 23 24 25 26 27 28 29 30	M T W T F S S 1 2 3 4 5 6 7 8 9 10 11 12 13 14 15 16 17 18 19 20 21 22 23 24 25 26 27 28 29 30 31
June 2023	July 2023	August 2023
M T W T F S S 1 2 3 4 5 6 7 8 9 10 11 12 13 14 15 16 17 18 19 20 21 22 23 24 25 26 27 28 29 30	M T W T F S S 1 2 3 4 5 6 7 8 9 10 11 12 13 14 15 16 17 18 19 20 21 22 23 24 25 26 27 28 29 30 31	M T W T F S S 1 2 3 4 5 6 7 8 9 10 11 12 13 14 15 16 17 18 19 20 21 22 23 24 25 26 27 28 29 30 31*
<div></div> School Holidays	<div></div> Public Holidays	<div></div> Administration Day
<div></div> Inset day		

**Autumn Term**  
Schools Open - morning Wednesday 31 August 2022  
Half Term - Monday 17 October 2022 - Friday 26 October  
Schools close - evening Wednesday 21 December 2022

**Spring Term**  
Schools Open - morning Wednesday 4 January 2023  
Half Term - Monday 13 February 2023 - Friday 17 February 2023  
Spring Break - Monday 3 April 2023 - Friday 14 April 2023

**Summer Term**  
Schools Open - morning Tuesday 17 April 2023  
May Day Bank Holiday - Monday 1 May 2023  
Half Term - Monday 29 May 2023 - Friday 2 June 2023  
Schools Close - evening Tuesday 25 July 2023

\*Return date for August/September 2023 TBC

16 - Academic Calendar 2022-23



17 - [Click here to see school policies](#)



[www.parentpay.com](http://www.parentpay.com)

Pay online....  
for peace of mind

Trips, School Meals,  
Breakfast Club, Tuck

#### A convenient way to pay

Paying online gives you peace of mind that comes with knowing your money reaches school safely.

Step 1 - Have your activation letter ready, these will be sent via email

Step 2 - Login at [www.parentpay.com](http://www.parentpay.com)

Step 3 - Follow the instructions in your activation letter to activate your account

Step 4 - Select 'Pay for items'



18 - [Click link to visit ParentPay](#)



Turn your online shopping  
into everyday magic for

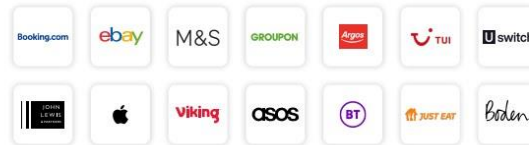
**Arnold Mill Primary School**

with easyfundraising

You shop, brands donate to us.  
It won't cost you any extra!

#### How to sign up

- 1 Visit the link below or scan the QR code  
[www.easyfundraising.org.uk/support-a-good-cause](http://www.easyfundraising.org.uk/support-a-good-cause)
- 2 Search for us
- 3 Your favourite brands donate whenever you spend with them



Download the  
easyfundraising App



Excellent   
3,945 reviews on Trustpilot

19 - [Click link to sign up to Easyfundraising](#)



Did you know there is a great way to give to Arnold Mill primary School when you shop on Amazon? And it doesn't cost you a single penny extra!

By signing up to Amazon Smile, you still get to browse the same wide selection of products as you do on amazon.co.uk. The difference is that when you do it through Amazon Smile, they give a donation to us based on a percentage (0.5%) of the value of your purchase. It may be a small amount, but if we all do our Amazon shopping on Amazon Smile, it soon adds up.

How to set it up:

How to use AmazonSmile on a web browser:

1. Visit [smile.amazon.co.uk/](http://smile.amazon.co.uk/)
  2. Sign in with the same account you use for Amazon.co.uk
  3. Select your charity - Arnold Mill Primary School Fund
  4. Start shopping! Remember to checkout at [smile.amazon.co.uk](http://smile.amazon.co.uk) to generate donations for your chosen charity.
- Tip: Add a bookmark to make it easier to shop at [smile.amazon.co.uk/](http://smile.amazon.co.uk/)

How to use AmazonSmile using the Amazon app on your mobile phone:

1. Open the Amazon Shopping app
2. Navigate to the main menu by clicking on
3. Tap on Settings and then select "AmazonSmile"
4. Select your charity and then follow the on-screen instructions to turn ON AmazonSmile in the mobile app
5. Once AmazonSmile has been activated in your app, future eligible app purchases will generate a donation for Arnold Mill Primary School.

Thank you for your support.

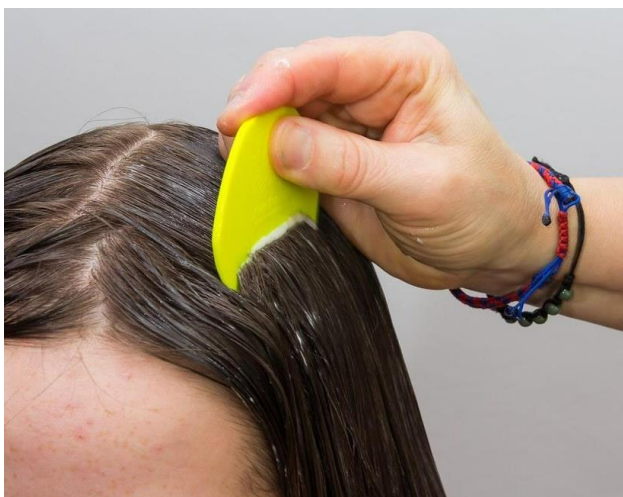
20 - [Click link to sign up to Amazon Smile](#)



21 - [Link to Cost of Living Factsheet](#)



22 - [Link to information about the NHS Minor Ailment Scheme](#)



23 - [Link to information about how to deal with head lice](#)