

Arnold Mill Primary School and Nursery



Starting in Foundation 1

2022-23



The Foundation Stage

The Foundation Stage has its own curriculum guidance, which follows children's development during their early years. This is the basis of the Foundation Team's planning and copies can be found in each class. This is called The Early Years Foundation Stage (EYFS).

The EYFS is a single quality framework to support children's learning and development from birth to five years. It recognises children as individuals and competent learners and is delivered through a structured play-based approach to learning and development.



The Foundation Unit

Our school building allows us to have a single Foundation Unit which encompasses three to five year olds. The children begin in Foundation 1 (Nursery) when they are three and transfer into Foundation 2 (Reception) in the September of the academic year during which they will be five.

Our building is divided into areas to create spaces for the children to explore and work. Each group has a base with a large carpet area - we have one Foundation 1 base and two Foundation 2 bases. Each has an interactive whiteboard. Outside we have a large play area that incorporates safety surfaces and grass. There are opportunities to climb, balance, ride bikes, make dens and lots more.



Why is the Foundation Stage important?

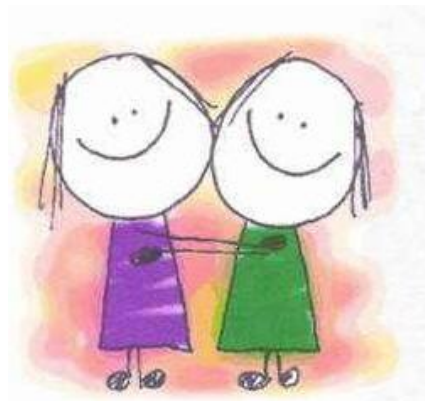
All children arrive in Foundation having learnt a huge variety of things at home and in their previous settings. Our aim, throughout the Foundation Stage, is to continue to extend this learning process by providing a happy, secure and stimulating environment.

We believe that children learn best when they are well motivated and having fun. It is through play that children begin to experience and learn about the world around them, and how to cope with life's many excitements and challenges.

The EYFS also recognises that children learn and thrive by having access to the outdoor environment and this has equal status with the indoor learning environment.

Therefore, in the Foundation Stage, the children are presented with well-planned structured play activities and also opportunities for independent learning which allow them to:

- socialise and communicate
- develop enquiring minds
- explore early literacy
- extend their natural creativity
- explore mathematical and scientific concepts



The EYFS helps practitioners to provide appropriate play experiences to enable your child to develop in all areas. It enables them to recognise both your child's strengths and the areas in which they need more support to develop new skills. The activities that are provided for young children will underpin the skills they need to work towards the Early Learning Goals in the following areas by the end of Foundation:

Three Prime Areas:

- Communication and Language
- Physical Development
- Personal, Social and Emotional Development

Four Specific Areas:

- Literacy
- Mathematics
- Understanding the World
- Expressive Arts and Design

All areas are of equal importance and often the activities offered to the children will cover more than one aspect. During the final year of the Foundation Stage (F2) there are more teacher directed activities and a greater emphasis on Literacy and Mathematics as children acquire the skills they need to be ready for the next key stage.

The EYFS also encourages practitioners, parents and carers to work together to help children develop to their full potential. If your child has a Special Educational Need (SEN) and/or disability the EYFS enables practitioners to target work specifically and help children to progress.

The EYFS Curriculum has been revised recently and the new version becomes statutory from September 2021.



The School Day in Foundation 1*



Usual sessions times:

Morning session - 8.50am - 11.25am

Afternoon session - 12.50pm - 3.25pm

Some children attend for five mornings or five afternoon sessions. Within each session children have the opportunity to play and work at self-selected activities both inside and outside. They will also be expected to work in small groups alongside an adult for Phonics and Mathematics and to take part in whole group sessions on the carpet. On most days there will also be time for a small story group or singing session. Sometimes we will join in with the whole school for assembly and we take part in P.E. lessons in the hall once a week.

We are a welcoming school, and we ask you to accompany your child into the Foundation Unit for a short visit prior to them visiting us independently. We will do everything possible to make your child's start a positive one and we will be communicating with you regularly and post regular updates and posts on Teams of our activities in F1. We encourage you to email us with any concerns you have or to use the 'chat' facility on Teams.

Extended Entitlement in Foundation 1

All children in Foundation 1 are now entitled to 15 hours free provision. So as well as the five sessions outlined above your child will be able to:

1. Attend Breakfast Club three times a week or
2. Stay for lunch twice a week or
3. Go to the After School Club once a week.

Although there is usually a choice in days which children stay for lunch, sometimes days may not be available if there are too many children on those days.

30 Hours' Entitlement in Foundation 1

We offer a limited number of 30 hour places to children who are eligible (please see <https://www.gov.uk/30-hours-free-childcare> for details of eligibility). These places are offered first to the older children in Foundation 1 in preparation for them moving into Foundation 2.

Learning to be with others

One of the main aims of Foundation is to help children learn the social skills required to co-operate with others. Lots of children, especially when they first start Foundation, may have difficulty sharing. This is not unusual, and we are used to this! We provide lots of experiences where groups of children take turns, co-operate, share and compromise under supervision - we are firm but kind!



We encourage children to think about their own behaviour, and hopefully become responsible for the best way of interacting with others in awkward or confrontational situations. Some children prefer to play alone, whilst others need company. We offer opportunities for all these needs, but carefully monitor what is happening, encouraging different experiences. Our Behaviour Policy is a five-point plan based on the fingers of one hand, and is shown on the next page.

What happens before your child starts in the Foundation Unit?

- You will be invited to an open evening as an introduction to the Foundation Unit and the School. This will be an opportunity for you to meet the team and ask questions. **We will need to check your child's birth certificate.**
- You will be offered an appointment to bring your child to look round the Foundation Unit and meet the team working in F1. The Foundation team will chat with you about our routines and expectations.
- We will invite your child in for 2 short stay and play sessions of an hour. He or she will be able to play with the children who are currently in our nursery (F1). This time will be organised with you for you to drop off and collect your child.
- You will be given a date for your child to start during this week.
- Throughout this transition period we will be doing everything possible to work with you to provide the best start and care for your child. We will encourage you to email us or call us so that we can tweak the plans if needed.

Recording your child's progress

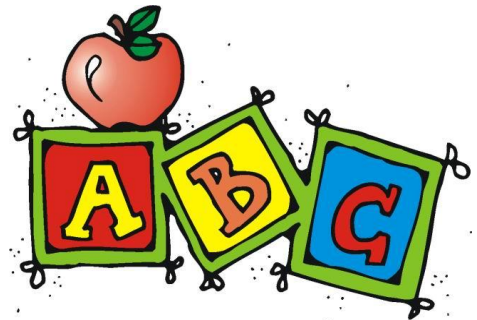
We will keep records of your child's progress through the Foundation Stage.



You will have opportunities to discuss your child's progress at regular parents' meetings and also on transfer to Foundation 2. The "All About Me" entry profile, completed prior to Foundation 1 entry, forms the first part of the child's records which will be built on during the Foundation Stage. During your child's last term in Foundation 2 he/she will be assessed against the Early Learning Goals (ELGs) and be supported with their transition into the next key stage.

Learning Journeys

Alongside the profile each child has a Learning Journey. In this we record significant progress through observations, photographs and work; we mark celebrations and special occasions and include some assessments. At the end of each year we will give your child their Learning Journey to bring home to share with you and the rest of their family.



Helpful Hints

We want your child to be comfortable so please dress your child in sensible clothes. Our activities may sometimes be messy, and outside play takes place in all kinds of weather! Remember to put a coat on if it's cold - even if you travel by car. Your child will also need a scarf, hat and gloves for cold and snowy days. The children need sun-hats and suncream on hot days. Please remember to apply the suncream at home and give written permission for us to re-apply if the children attend all day.



Please label all clothing, especially outdoor articles such as coats and hats. Please check that your child takes the right clothes home! Please return clothes to the unit if your child has had to borrow some of our spares. If you wish your child to wear school uniform, it is available from the office. When your child transfers to Foundation 2 they will be expected to wear the school uniform every day.

Try to encourage your child to be independent when going to the toilet. Remember stiff buttons and dungarees can be difficult to cope with. Also, any coat that needs to be pulled over one's head is really tricky!

We always like to celebrate children's birthdays, so we are happy for your child to bring in a treat of their choice to share with their classmates. We prefer this to a healthy option of fresh fruit or raisins, alternatively you could buy a book for the children to enjoy with their friends.

Please discourage children from bringing toys to school - it can be very upsetting if they get lost or broken. The children will all have the

opportunity to bring home our Family Box when they can bring special things in to share with the class.

Handwashing and Hygiene

We support children to regularly wash their hands using liquid soap and warm, running water. They are encouraged to rub hands together fast for at least 20 seconds and to pay attention to hands, forearms, between fingers and under fingernails. They are also shown how to rinse hands, dry hands with a paper towel and use it to turn off taps and throw away the paper towel.

The children are required to wash their hands several times a day, including when arriving at/leaving school, before snacks/meals, after using the toilet, before/after playing outside and after sneezing, coughing, or using a tissue.

