

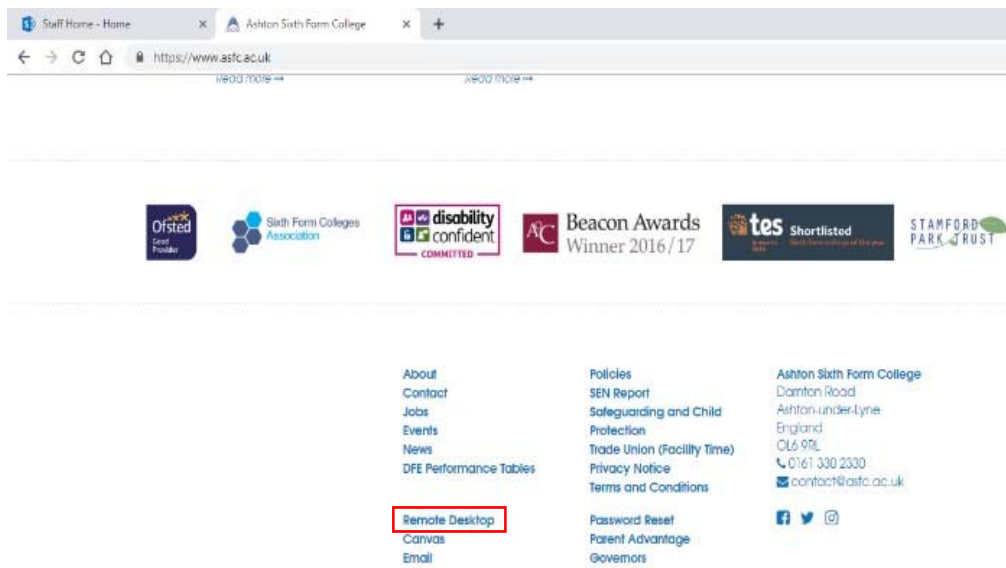
Remote Desktop

(To access your Ashton Desktop and Print from Your Own Device)

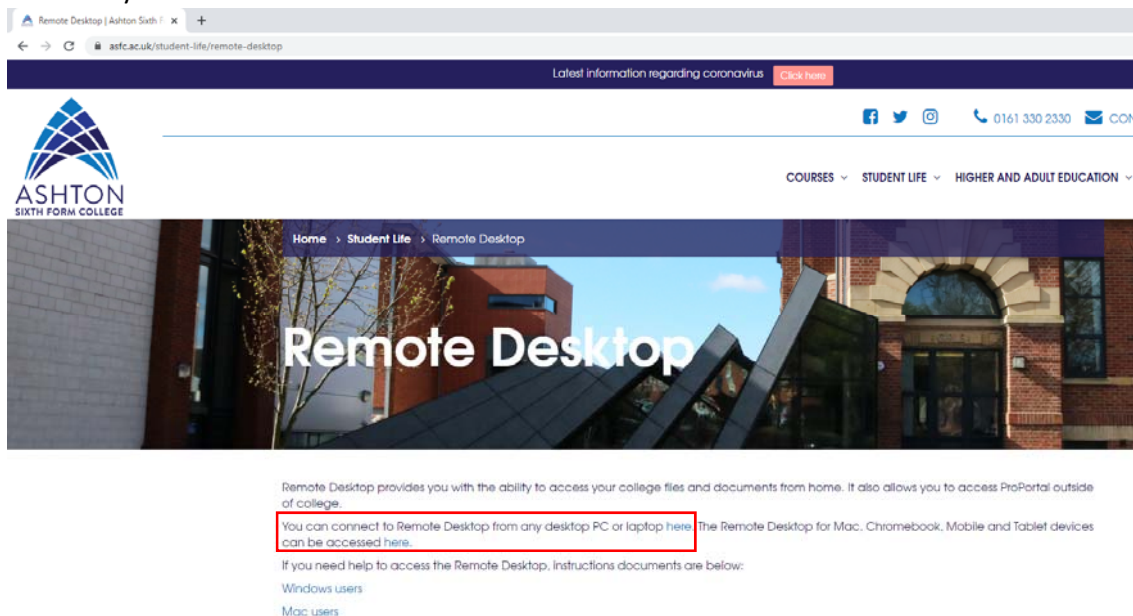


Load a web browser on your device (we usually recommend Google Chrome for College resources) and go to www.asfc.ac.uk

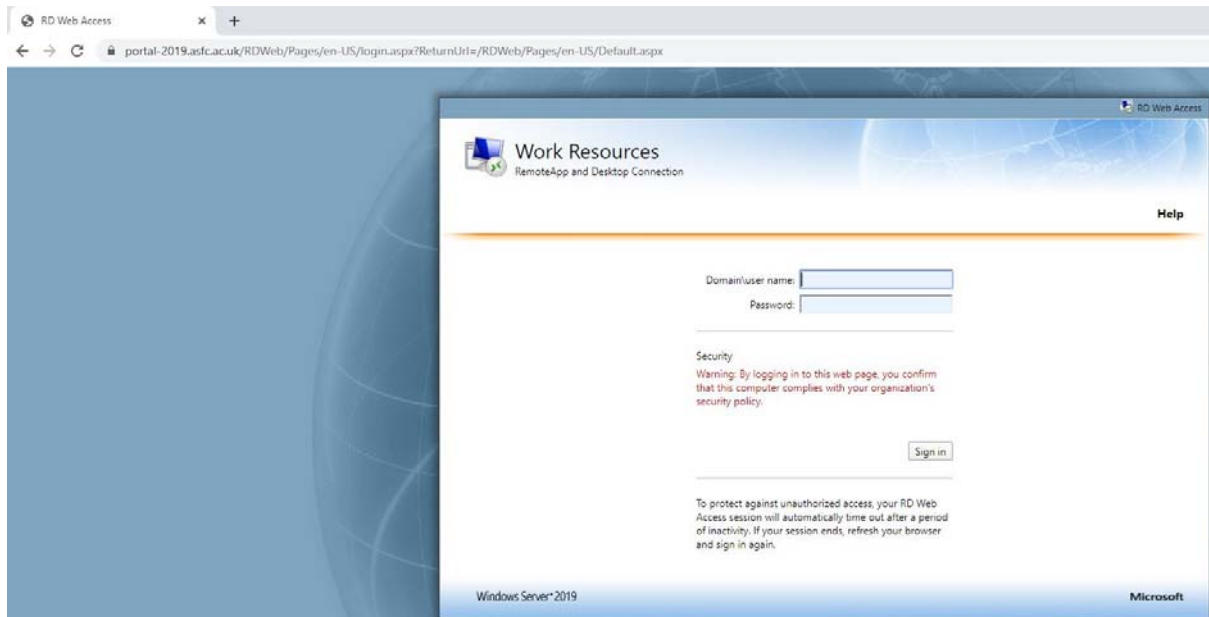
Scroll down to the bottom of the website and click the link for Remote Desktop



You will be taken to the page below click. Click where the word “here” is highlighted in blue to start to create your connection.

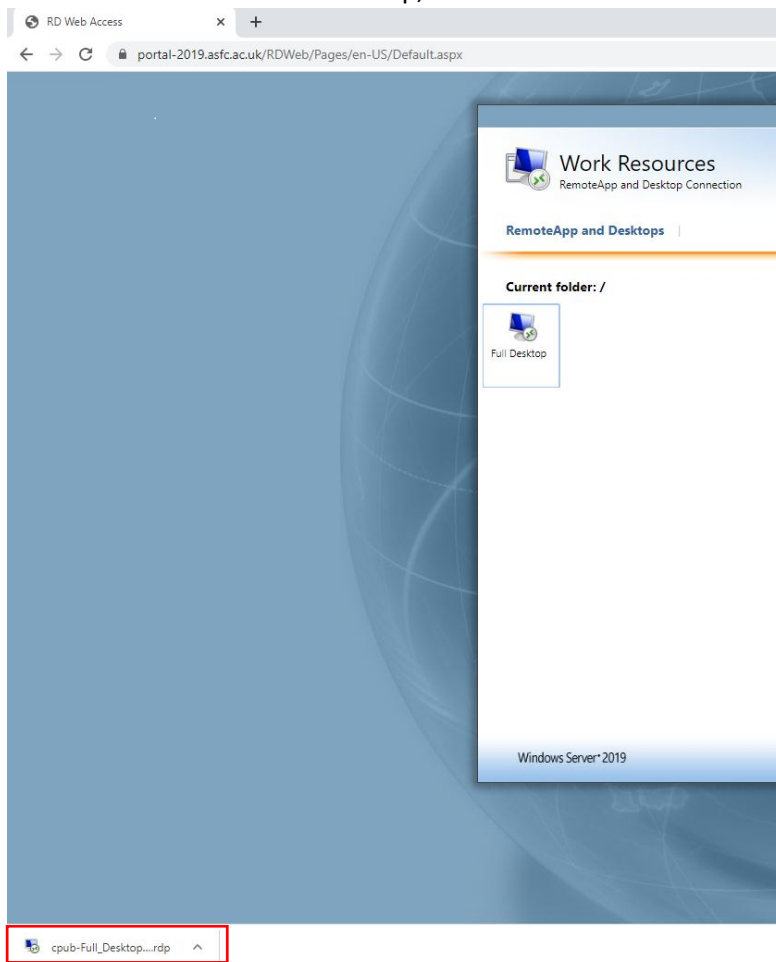


You will be taken to this page. Enter your login details in the format username@asfc.ac.uk and your usual college network password.



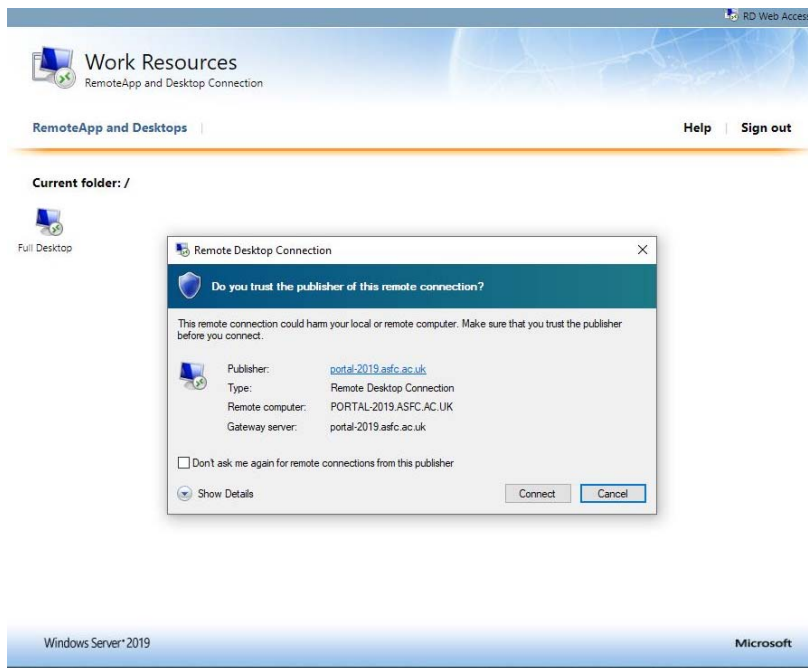
After successfully entering your details you will be presented with the screen below.

Click the Icon marked Full Desktop, this will download a small file to your machine.

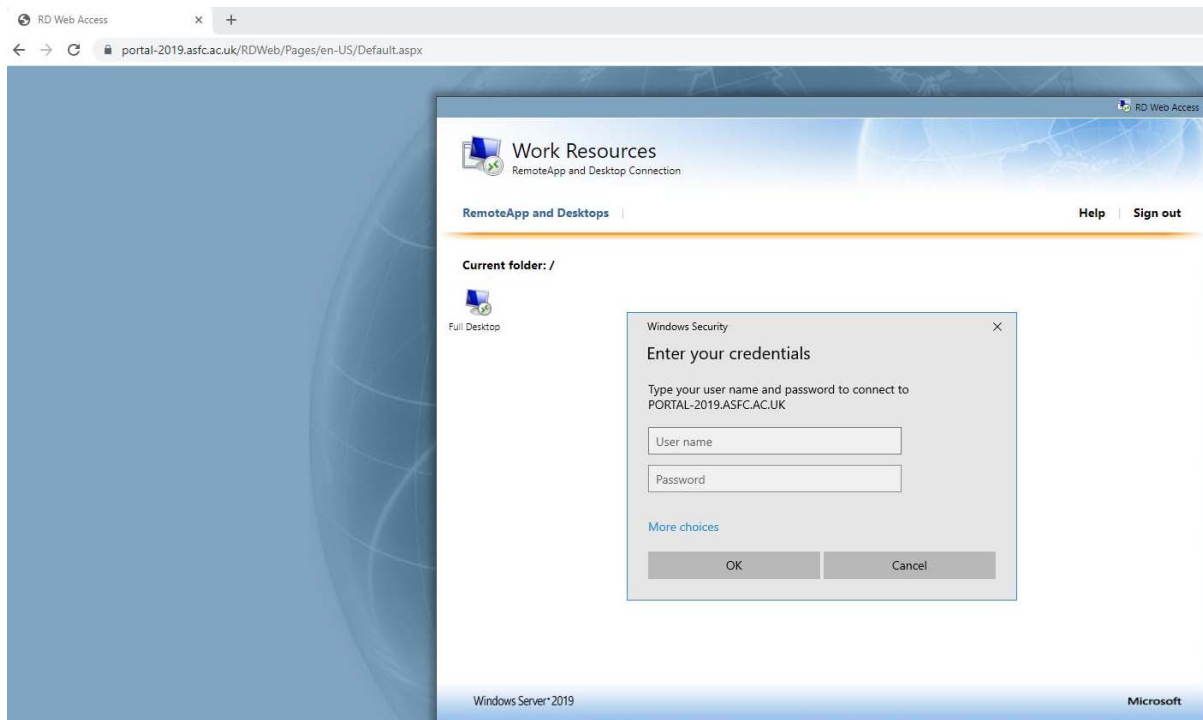


Double click the .rdp file when it has completed downloading

You will be presented with this screen, click connect



When prompted to enter your credentials; use the format of username@asfc.ac.uk and your usual college password.



This should now connect you to the Colleges Remote Desktop where you can access college resources and your network files etc.

