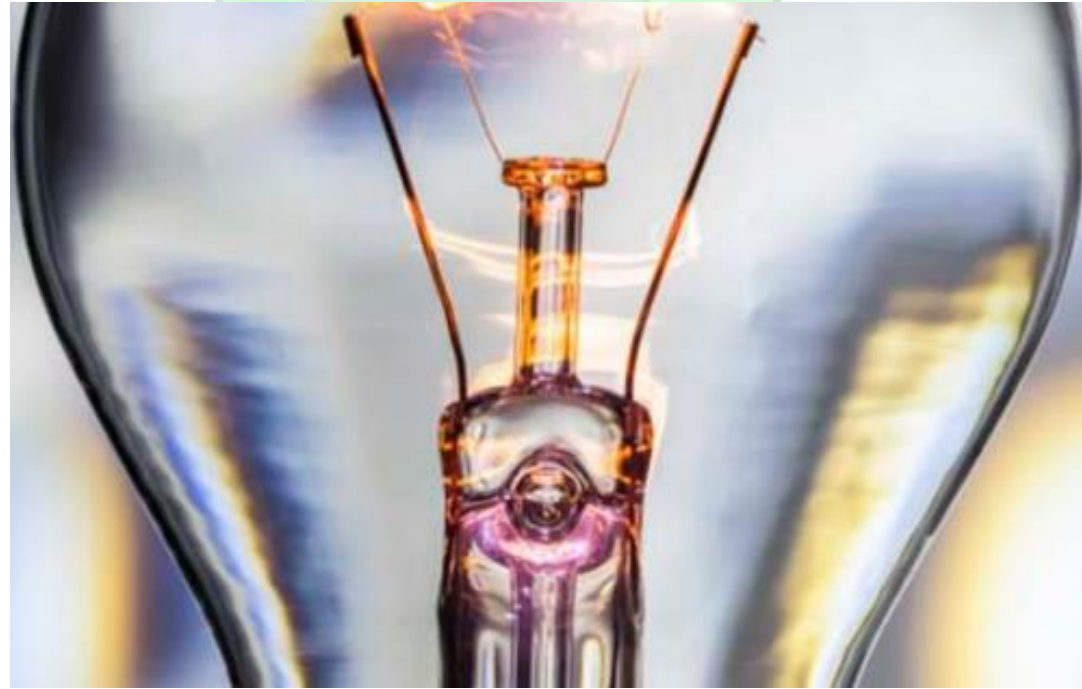


My Knowledge Journal



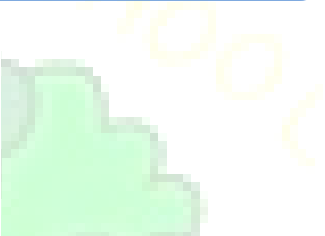
Electricity

Name: _____

Pre Knowledge Quiz

Fill in the missing words:

Electricity flows in a _____. The flow of electricity creates an electric _____.



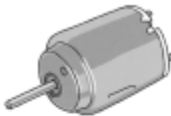
Circle which combination would make a simple circuit:

- a) a buzzer, a battery, and a bulb
- b) a battery, a wire, a bulb
- c) a bulb, a switch, a wire

Name these pieces of equipment that you might use when you are making electrical circuits:







Name three appliances that run on electricity.







Draw lines to match these items to **battery** or **mains electricity**:







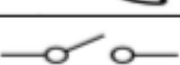
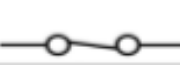
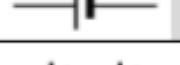
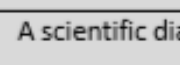


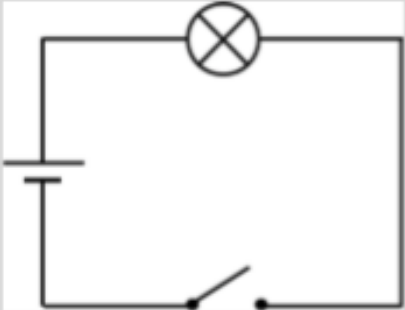




Mains
Electricity

Battery
Electricity



Common electrical hazards	Electrical circuit symbols	Vocabulary Dozen													
1. Overloading a plug extension socket.	 lamp (indicator)	circuit	A complete route which an electric current can flow around.												
2. Exposed wires.	 lamp (lighting)	current	A flow of electricity through a wire.												
3. Damaged wall sockets.	 wire	physics	The study of forces including electricity and the way it affects objects.												
4. Wires left along the carpet for people to trip over.	 motor	battery	A small device that provides power for electrical items.												
5. Placing metal into electrical appliances or open sockets.	 buzzer	cell	A device used to generate electricity. A battery is an example of a cell.												
6. Electrical appliances and wires near water. NOTE: WATER IS AN EXCELLENT ELECTRICAL CONDUCTOR SO IT CAN BE VERY DANGEROUS TO HAVE ELECTRICAL DEVICES NEAR WATER	 open switch	conductor	Any material that electricity can pass through or along.												
	 closed switch	insulator	Any material that electricity cannot pass through or along.												
	 cell	buzzer	An electrical device that makes a buzzing sound.												
Thomas Edison (1847 – 1931)		 battery	motor	A device that changes electrical energy into movement.											
<p>Thomas Edison was born in 1847 and died in 1931. He lived in the state of New Jersey in the United States of America (USA)</p>  <p>He is known as one of the greatest inventors in history.</p> <p>He invented the light bulb, the phonograph (which could record and play sound) and an early video camera called the Kinetograph. The films were then watched on a Kinetoscope which he also invented.</p>	A scientific diagram of an open circuit:		wire	A long thin piece of metal that carries an electrical current often covered in plastic for safety.											
	 <p>The light bulb will not light in this circuit until the switch is closed.</p>		voltage	An electrical force that makes electricity move through a wire, measured in volts (V).											
			socket	A device on a wall that you can plug electrical equipment into.											
		<table border="1"> <thead> <tr> <th>Electrical Conductors</th> <th>Electrical Insulators</th> </tr> </thead> <tbody> <tr> <td>Copper</td> <td>Rubber</td> </tr> <tr> <td>Iron</td> <td>Wood</td> </tr> <tr> <td>Steel</td> <td>Plastic</td> </tr> <tr> <td>Silver</td> <td>Paper</td> </tr> <tr> <td>Gold</td> <td></td> </tr> </tbody> </table>		Electrical Conductors	Electrical Insulators	Copper	Rubber	Iron	Wood	Steel	Plastic	Silver	Paper	Gold	
Electrical Conductors	Electrical Insulators														
Copper	Rubber														
Iron	Wood														
Steel	Plastic														
Silver	Paper														
Gold															

My Previous Knowledge...

New knowledge ...

My Knowledge Builder

My Previous Knowledge...

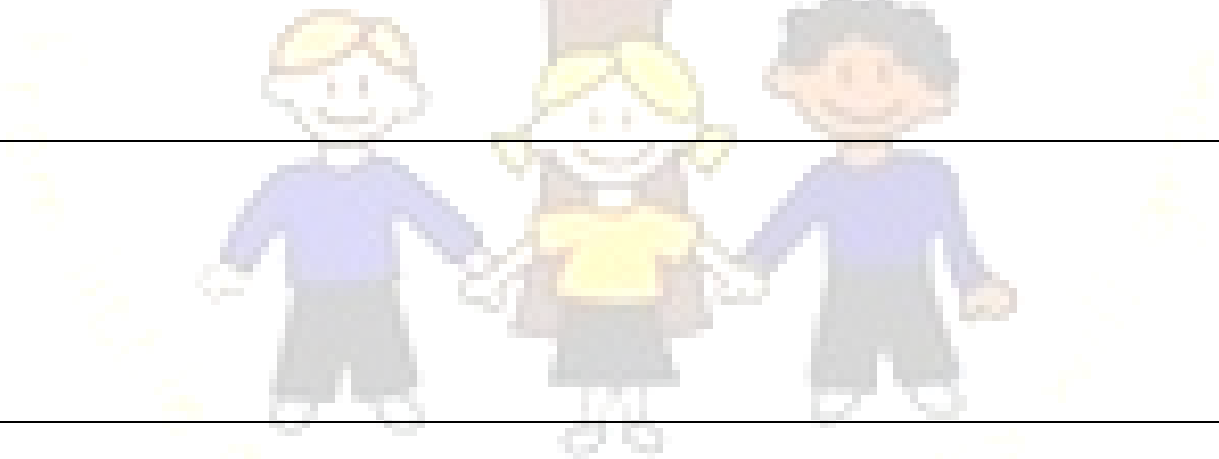
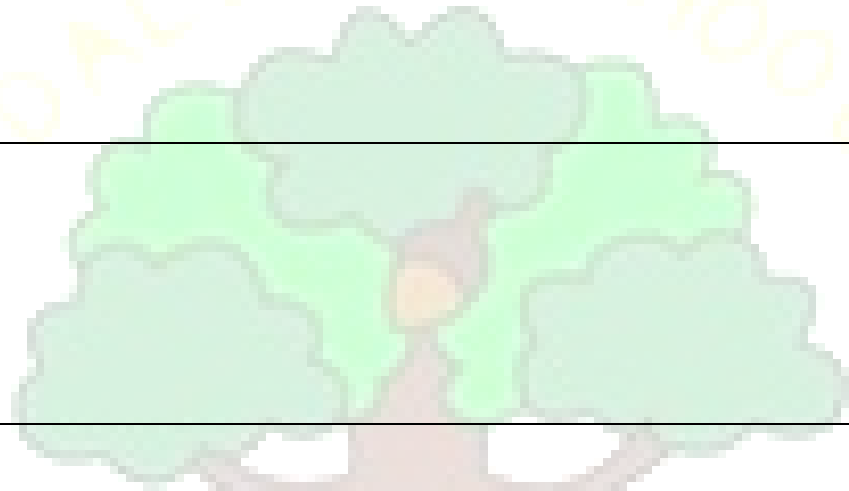
New knowledge ...

Week
1

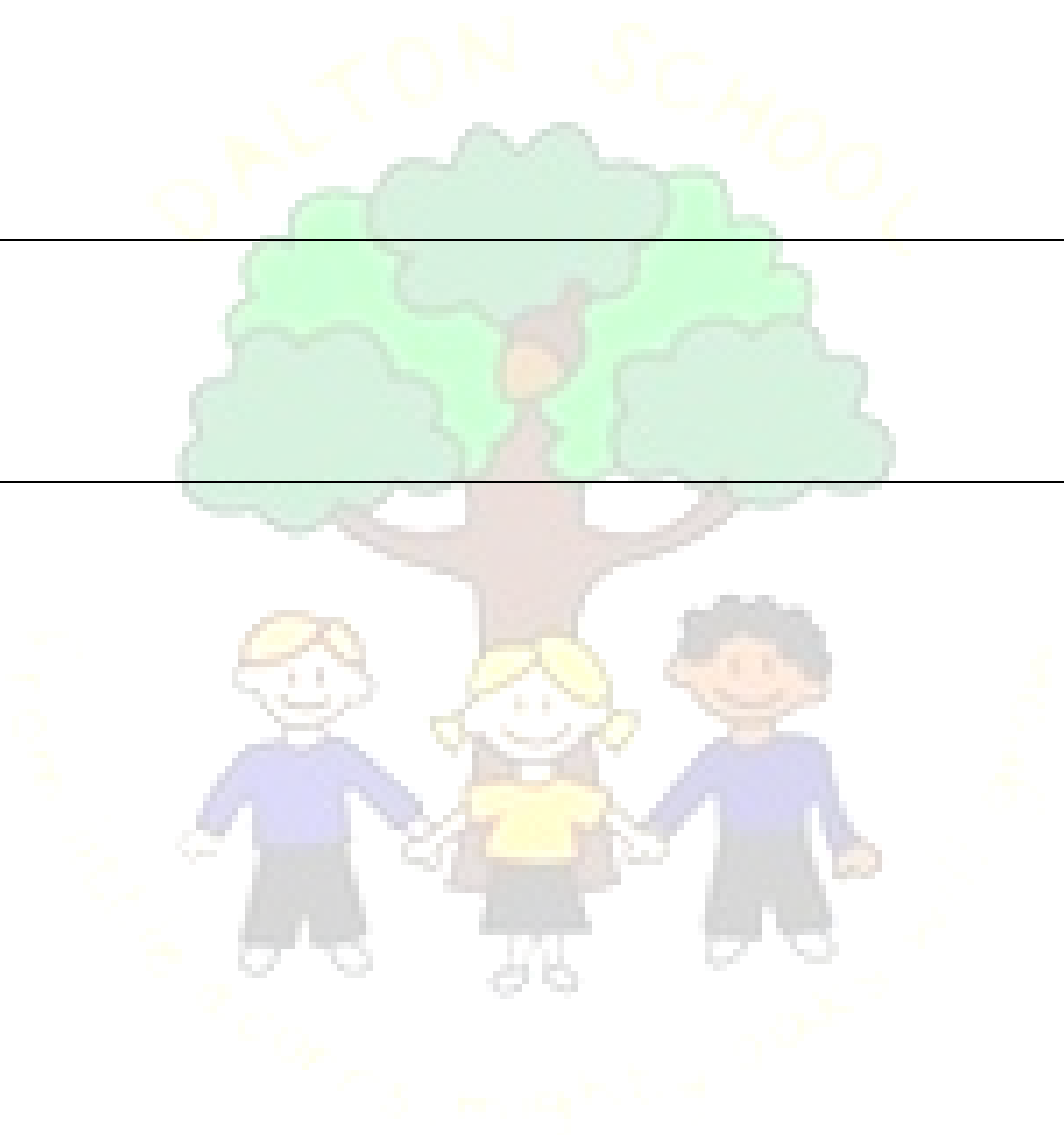
-
-
-

Week 2	<ul style="list-style-type: none">•••
Week 3	<ul style="list-style-type: none">•••
Week 4	<ul style="list-style-type: none">•••
Week 5	<ul style="list-style-type: none">•••

DALTON SCHOOL



Week 6	<ul style="list-style-type: none">•••
Week 7	<ul style="list-style-type: none">•••



Post Knowledge Quiz

Fill in the missing words:

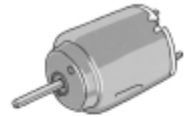
Electricity flows in a _____. The flow of electricity creates an electric _____.



Circle which combination would make a simple circuit:

- a) a buzzer, a battery, and a bulb
- b) a battery, a wire, a bulb
- c) a bulb, a switch, a wire

Name these pieces of equipment that you might use when you are making electrical circuits:



Name three appliances that run on electricity.

.....



Draw lines to match these items to battery or mains electricity:



Mains
Electricity

Battery
Electricity

DALTON SCHOOL



FOR ALL STUDENTS TOGETHER WE CAN MAKE A DIFFERENCE