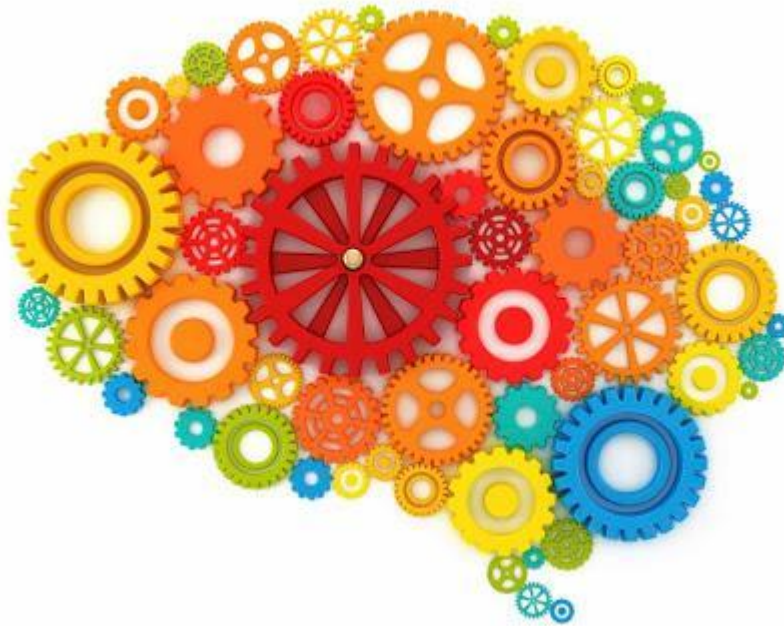




A Level Psychology Transition work



This transition work book are designed to give you an introduction and prepare you for advanced study in your chosen subjects. The tasks are to be completed independently over the summer and handed into your subject teachers in your first lesson. You should aim to spend a minimum of four hours on this transition booklet.



The AQA Course

A Level Year 1

Paper 1: Introductory Topics in Psychology

What's assessed

Compulsory content 1–3 above

Assessed

- written exam: 1 hour 30 minutes
- 72 marks in total
- 50% of AS

Topics:

Social Influence
Memory
Attachment

Paper 2: Psychology in Context

What's assessed

Compulsory content 4–6 above

Assessed

- written exam: 1 hour 30 minutes
- 72 marks in total
- 50% of AS

Topics:

Research Methods
Psychopathology
Approaches in
Psychology
(including Bio
Psychology)

100% Exam (two papers), 0% Coursework





Task 1, Topic 1: Marvellous Memory...

Mini Experiment:

In this experiment you can test as many or as little people as you like. As the experimenter you should read out one line at a time of the triangle of numbers below to your participant. When you have finished reading out the line, your participant should recite back to you as many of the numbers they can remember. Record how many numbers they recall correctly on each line.

6
27 35
10 28 22
38 46 10 11
52 8 19 81 17
55 38 29 13 8 71
75 17 20 61 82 5 12
61 38 17 40 49 84 57 8
71 22 31 89 47 5 1 16 94
18 95 48 30 89 67 18 11 15 17
76 83 40 28 25 12 15 53 95 49 20
16 9 11 17 49 50 28 69 24 53 78 10
77 53 49 76 19 94 87 64 23 19 15 51 2
78 56 34 19 27 20 80 42 38 64 29 10 79 31

Now think about and explain:

- 1) What was the maximum amount of numbers your participants call recall from any line? (If you used more than one participant, take the average).
- 2) What do your results suggest about memory?

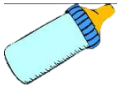
Now research and answer the following...

- 1) What is memory? Does it have different types? If so, explain them...
- 2) What is the capacity and duration of the average memory in humans?
- 3) What did George Miller do in 1956? What did he discover about memory? How does this link to the results from your experiment above?

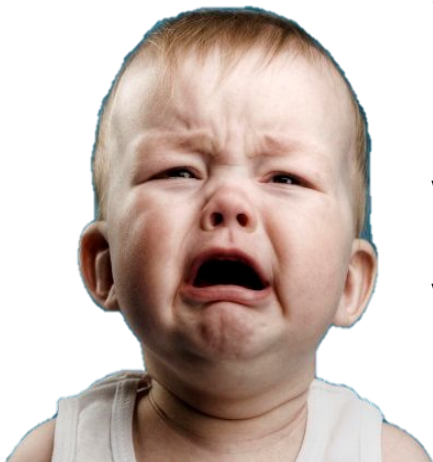




Task 2, Topic 2: Attachment



Babies, Babies, Babies...



Research and answer the following:

From a Psychological Perspective...

Why do babies cry all of the time?

Why are all babies born with blue eyes?

Useful Link:

http://www.babycenter.com/2_creating-an-attachment-with-your-baby_10350318.bc

“Oh, oobee doo I wanna be like you...”



Consider, research and answer the following:

From a Psychological point of view, why should Mowgli not survive in the Jungle?

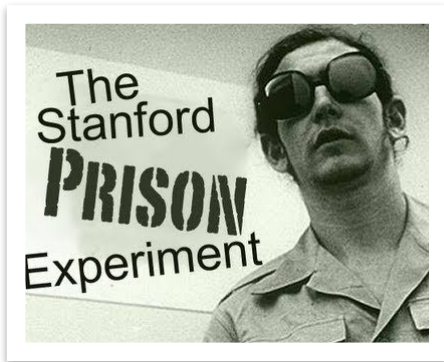
Hint: Try to link to the psychologist John Bowlby in your answer...





Task 3, Topic 3: Social Influence

Obedience, Obey, Conform...



Research and produce a fact sheet on two key studies:

- 1) Milgram's (1963) Obedience to Authority
- 2) Zimbardo's Stanford Prison Experiment

Taking it further...



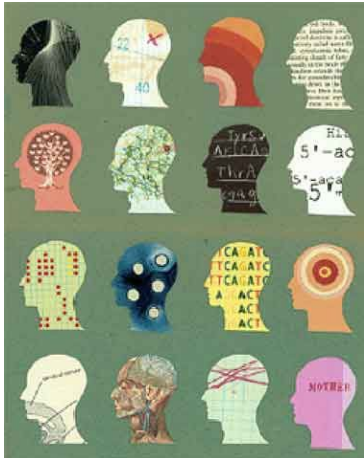
Explain how research such as Milgram & Zimbardo, might explain historical atrocities such as the Nazi persecution of the Jews...





Task 4, Topic 4: Psychopathology...

What is normal?



Consider, research and explain...

- 1) Is there such a thing as normal and abnormal? What are the definitions of these?
- 2) How do Psychologists decide what is abnormal?

Fear. Sadness. Obsession.



Produce a fact file on each of the following mental disorders. Include **symptoms**, potential **causes** and **treatments**.

- 1) Phobias
- 2) Depression
- 3) OCD





Task 5, Topic 5: Approaches to Psych...

The Famous Five

There are five main Psychological approaches or perspectives. Research them and explain the key terms, assumptions and psychologists which fit into each one.





Task 6, Topic 6: Psychology? A Science? Really?

Now to the **biggest and most controversial debate of them all...**

Most people assume Psychology is an easy or 'soft' subject which cannot possibly be a science. But is it?

It is your job to come to a conclusion as to whether or not Psychology IS a hard science.

Research arguments for and against Psychology as a Science and produce a debate on this.

Consider:

- 1) The Subject Content
- 2) Research Methods Used

FOR Psych as a Science 😊	AGAINST Psych as a Science ☹️





Useful Resources & Further Reading

To help you on your way...

Websites:

- **Youtube** have a number of really good factual clips. In particular 'Crash Course' have produced a number of introductory videos to key elements in Psychology.
- <http://www.simplypsychology.org/a-level-psychology.html> - Tailored to the old specification, but has all the relevant key information for A Level Psychology.
- <http://www.psychteacher.co.uk/> - Tailored to the old specification but contains key information for A Level Psychology.

Books:

- ***Working Memory, Thought and Action*** – Alan Baddeley
- ***The Lucifer Effect*** – Phillip Zimbardo
- ***Obedience to Authority*** – Stanley Milgram
- ***Fundamentals of Cognition*** – Michael Eysenck
- ***Psychology: The Science of the Mind and Behaviour*** – Richard Gross
- ***The Complete Companions: AQA Psychology Year 1 and AS Student Book*** – Mike Cardwell & Cara Flanagan
- ***AQA Psychology for A Level Year 1 and AS Student Book*** – Cara Flanagan & Dave Berry

