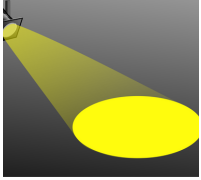




# BALSHAW LANE NEWSLETTER



## Spotlight this week on Maths

In Maths we are now using a scheme called White Rose Maths. Each year group starts the new academic year off with a unit on place value to ensure the children understand the value of each digit within a number and are confident at reading and understanding numbers. More information on the new scheme will be given at the Curriculum Meeting for Parents on Monday.

**Reception:** We have been working on finding matching pairs and also subitising to 3.

**Year 1:** We have been sorting objects into groups and counting objects to 10.

**Year 2:** We have been working hard to recognise tens and ones, use a place value chart and partition numbers to 100.

**Year 3:** We have been working on number lines up to 100 and have recapped our times tables fluency.

**Year 4:** We have been partitioning numbers as well as labelling, identifying and finding missing values on number lines up to 1000. We have also been looking at different ways to represent numbers up to 10,000.

**Year 5:** We have been looking at reading and writing numbers to 1,000,000. We have looked at the value of different digits by using place value cards.

**Year 6:** We have been working on place value in numbers up to 10,000,000. We have looked at recognising the value of each digit, identifying and placing numbers on number lines with different intervals and understanding what happens when a number is multiplied or divided by powers of 10.

## Assembly this week...

This week our Well-Being Team launched this year's well-being work for the children with a fun assembly. Our whole school focus on well-being continues to be a high priority for all children and staff as a healthy mind and body are so important. The focus for the assembly was the importance of sleep, shared ways for helping to get to sleep and explored what activities can prevent you getting to sleep.



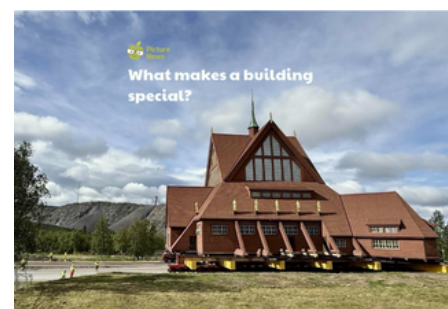
### Balshaw Lane Wellbeing Team:

- Mr Ripley
- Mrs Boyden
- Mrs Singleton
- Mrs Hamilton
- Mr Browne
- Miss Baxendale



In Mrs Ashworth's KS1 and Mr Woodrow's KS2 Picture News assembly the children explored the question:

"What makes a building special?"



## Messages

### Reminders please:

Reception, year 1 and 2 parents please leave the playground as soon as the whistle is blown so the children can line up safely.

PE - children are not allowed to wear earrings for PE. Ideally, can the children not wear them on PE days. If they have to, please provide your child with plasters so they can cover them up. No earrings are allowed at all for swimming.

Grapes - please ensure these are cut in half as they are a choking hazard.

Please remind your child that they are not allowed to share food - this is due to allergies.

No parking on the school car park at any times, even when collecting from a school club.

Many thanks for your support.

## Team Points

This week our team points winners were:  
**DRAGONS.**



## Curriculum Information

All parents should now have received, via email, the class curriculum letter for this term. These are also posted on the website for reference.

We hope you are able to attend the Curriculum Meetings for Parents on Monday at 3:30pm.

## Well-being Week

This week we have focused on:

### Wellbeing Wednesday

#### Take Notice: how does sleep affect you?

Did you know that children need more sleep than adults? Why might this be?

How do you feel when you are tired?  
How do you feel after a good night's sleep?

What helps you to sleep better and feel well-rested?



## Music appreciation in assembly

Our musical artist for this half term is Abba. This week we have enjoyed listening to "Waterloo."



## Gold stars!



We love rewarding our super behaved children who have followed our 3 golden rules of ready, respectful and safe. Well done to all the children who gained their first golden star! We are really proud of you and what an excellent start to the new year.

## Pupil Voice

### Question of the week: What have you enjoyed learning in your new class?

Triston 1T- I like learning my numbers in maths.

Olivia 2M - Finding out about the Great Fire of London.

Lily 3B - Learning about the Stone Age in history.

Lochy 4F - Testing rice, salt and foam gel to learn about solids, liquids and gases.

Amber 5B - Our new guided reading book 'The Boy at the Back of the Class.'

Immy 6C - Making 'blood smoothies' in science to find out the different jobs of parts of the blood.

## Headteacher Awards

Congratulations to the all the children who received a Headteacher Award in assembly last week:

RA Imogen  
1A Florence  
2HP Archie  
3B Bodhi  
4G Olivia  
5B Corinne  
6C Teddy

RH Lucas  
1T Oliver  
2M Louis  
3J Arthur  
4W Kiera  
5H Penny  
6S Darcy



## Attendance and Punctuality

Whole School Attendance for this academic year is: 97.9%. The figures below are for this week.

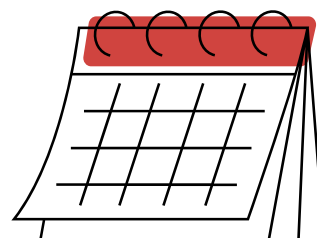
Congratulations to 1A, 4W and 6C for all being punctual. Well done!

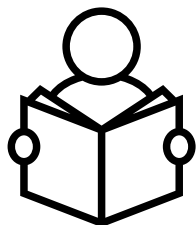
Please ensure all children are in school on time so that valuable learning time has not been lost. We will be sending reminders to children's parents / carers who are repeatedly late.

	<b>R A</b>	<b>R H</b>	<b>1T</b>	<b>1A</b>	<b>2 H P</b>	<b>2 M</b>	<b>3 B</b>	<b>3J</b>	<b>4 G</b>	<b>4 W</b>	<b>5 B</b>	<b>5 H</b>	<b>6 C</b>	<b>6 S</b>
Attendance for last week	99 %	97 %	100 %	100 %	99 %	98 %	98 %	99 %	98 %	94 %	98 %	94 %	95 %	96 %
Punctuality - how many lates?	6	2	2	0	1	1	3	6	3	0	4	1	0	6

## Dates for your diary

Monday 15th September	Curriculum Meeting for all parents at 3:30pm
Friday 19th September	School Council and Eco-Club Elections badges awarded in assembly
Thursday 2nd October	Tempest Photographs – Class and Reception individuals
Friday 10th October	Black History Awareness Day
Friday 17th October	Year 2 Assembly for Parents and Carers at 9:05am
Monday 20th October	Parents invited in to school with their children to view books 8:40am-9:00am
Tuesday 21st October	Parents invited in to school with their children to view books 8:40am-9:00am (further information will be sent out regarding this)
Wednesday 22nd October	Parents' Evening
Thursday 23rd October	Flu Vaccinations
	PTFA Halloween Disco
Friday 24th October	Year 6 Assembly for Parents and Carers at 9:05am
	Children break up for half term holiday
Friday 31 <sup>st</sup> October	Closing date for Secondary School Application





## Reading



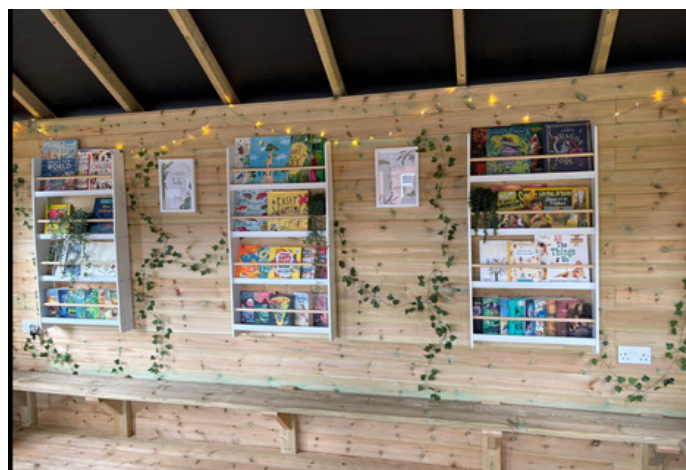
### Summer Reading Challenge: Message from Euxton Library

If the children have finished the summer reading challenge, please go to Euxton Library to collect their prize and register for their certificate which will be given out at school. If they have not yet signed up, there is still time as the challenge finishes at the end of the month.

### Reading Shelter

We are thrilled with our Reading Shelter. Look how beautiful it is and we can't wait for the children to use it. It will be open at collection time for our families to take a look.

Thank you so much PTFA and Ms Carver.



## PTFA News

### TICKETS NOW ON SALE

We are pleased to present our first event of the year, our Halloween spook-tacular disco!

Thursday 23rd October

Infants - 5:45pm-6:45pm

Juniors - 7:00pm-8:15pm

Entry only £3.50 - OR - Entry and Hot Dog £5.50

This is ALWAYS a popular event with most of the school attending. There will be music, party dances and games. Sweet treats and refreshments to purchase and games to play on the night to win prizes. Please send CASH on the night with your child for these.

TO BUY YOUR TICKETS and HOT DOGS - simply click on the link on the PTFA Facebook page or the QR code on the poster here to buy.

PLEASE ensure you add your child's FULL NAME, CLASS and if ordering a Hot Dog any ALLERGIES in the notes section.

Fancy dress encouraged but optional.





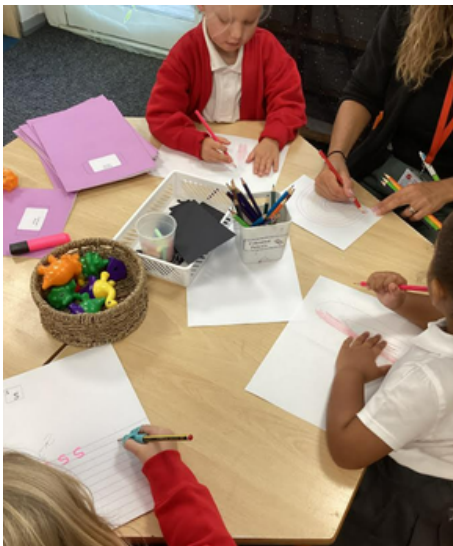


## Selection of photos from this week

Follow us on Facebook.



Please follow the school page as well as the PTFA page.





## Primary and Secondary Admissions



# Balshaw Lane Primary School



## OPEN DAYS

Come and see our amazing school in action. There will be a presentation by the headteacher and a full tour of our wonderful learning environment with a chance to meet our dedicated staff and fabulous children.

**Tuesday 30<sup>th</sup> September at 9:15am**

**Friday 3<sup>rd</sup> October at 9:15am**

**Thursday 9<sup>th</sup> October at 1:15pm**

**Monday 13<sup>th</sup> October at 9:15am**

**Wednesday 22<sup>nd</sup> October at 9:15am**

**Wednesday 12<sup>th</sup> November at 1:15pm**

**Friday 9<sup>th</sup> January at 9:15am**






We are looking forward to welcoming you to view our warm, friendly and caring school which has **OUTSTANDING** personal development.

Please contact the school office to book on one of our Open Days. Many thanks.

OFFICE@BALSHAWLANE.CO.UK    01257 278722    WWW.BALSHAWLANE.CO.UK

## OPEN EVENING

Thursday 2<sup>nd</sup> October 2025  
5.15pm - 8.00pm



Come and have a look at our fabulous school!

Headteacher's speeches at:  
5.30pm, 6.00pm, and 6.30pm





## SCHOOL ADMISSIONS PRIMARY

# APPLY NOW!

at [lancashire.gov.uk/schools](https://lancashire.gov.uk/schools)

**School and Academy places September 2026**

You must apply if your child has a 4th birthday between 1 September 2025 and 31 August 2026.

You must apply even if an older brother or sister is already at the school, or the school is linked to your child's nursery.

If you're a non-Lancashire resident apply through your own local authority.

Please read the admission criteria for your chosen schools on the website or get a copy from them.

**School transport** 

If travel cost is an important factor in your school preference, search 'school transport' at [lancashire.gov.uk](https://lancashire.gov.uk) or scan the QR code.



**CLOSING DATE**  
**15 January 2026**

[lancashire.gov.uk](https://lancashire.gov.uk) >>>> 



## SCHOOL ADMISSIONS SECONDARY

# APPLY NOW!

at [lancashire.gov.uk/schools](https://lancashire.gov.uk/schools)

**School and Academy places September 2026**

You must apply if your child is in their last year of primary school (year 6) from September 2025.

You must apply even if an older brother or sister is already at the school.

If you're a non-Lancashire resident apply through your own local authority.

Please read the admission criteria for your chosen schools on the website or get a copy from them.

**School transport** 

If travel cost is an important factor in your school preference, search 'school transport' at [lancashire.gov.uk](https://lancashire.gov.uk) or scan the QR code.



**CLOSING DATE**  
**31 October 2025**

[lancashire.gov.uk](https://lancashire.gov.uk) >>>> 



# INFORMATION

**Children and Family Wellbeing Service**

**Get advice and support**

Someone to talk to  
Problems at home/school  
Jobs and training  
Apprenticeships  
Staying safe online  
Sex and health  
Relationships

Mental Health  
Self Harm  
Bullying  
Drugs and alcohol  
Things to do  
Housing, rights and money  
What age can I?

facebook.com/LancashireYZ  
twitter.com/LancashireYPS  
You can contact us 365 days a year  
**2pm to 10pm**

**Age 0-19**  
(up to 25 for young people with learning difficulties or disabilities)

**talk zone**  
Text 07786 51 11 11  
Talk online lancashire.gov.uk/youthzone  
Call 0800 51 11 11

lancashire.gov.uk

**Lancashire County Council**

**Looking to Get Back Into Work? Why Not Start With Volunteering?**

**HOME START Central Lancashire**

**No Experience Needed**  
Just bring your enthusiasm – we'll provide the support and training.

Your child has just started nursery or school – now it's your time too.

Volunteering is a fantastic way to build confidence, gain skills, and ease back into the workplace.

Why volunteer with Home-Start Central Lancashire?

- ✓ Flexible Hours
- ✓ Build Your CV
- ✓ Boost Your Confidence
- ✓ Meet New People

Interested? Let's chat!  
**Contact Katie-**  
volmanager@homestartcentrallancs.org.uk

**TRY RUGBY WITH US!**  
Visit findrugby.com

**RFU Girls Activity Day**  
20<sup>th</sup> September 2025

**England Rugby**

**Preston Grasshoppers Rugby Club**

**13:00-15:00**  
**For All Girls 6-11 Years Old**  
**Games, design a T-Shirt arts & crafts**

**15:30 Womens World Cup Semi Finals**

**RUGBY**

**Food Available Bar Open**

**Bring your own plain white T-Shirt**

*My Teammates are always there for me*

**DRAMA KIDS**  
Formerly Helen O'Grady Drama Academy  
New name, new logo, same GREAT programme.

**NOW ENROLLING**

**BOOK YOUR TRIAL TODAY!**

From childhood upwards, we all need to have self-confidence and emotional intelligence to convey our thoughts and feelings, express our opinions politely and confidently, to have a voice in the classroom or workplace, and know how to establish positive relationships with other people. These life skills give us the freedom to develop to our full potential and have self-confidence in our own abilities.

In 1976, Helen O'Grady, a trained teacher and actress, recognised the benefits of drama and role-play in building self-confidence, developing communication skills and encouraging social interaction. 44 years later, the international Drama Kids academy is still delivering this vision around the globe through an expertly structured and professionally written drama curriculum. Students will have the opportunity to be a variety of characters in our whole class improvisations and other diverse roles will be played out in our mini-scripts and devised improvisations.

**Bring your child along to a FREE trial class to see how the programme works!**

Our specially written curriculum ensures our students have a fun-filled drama lesson every week whilst we aim to:

- ★ Develop skills in verbal communication and social interaction
- ★ Build ongoing confidence and self-esteem
- ★ Encourage enthusiasm, energy and a positive approach to life

Classes are aimed at children age 4 to 10 Years (Primary) and 11 to 17 Years (Youth Theatre)

## CONTACT US

Wigan and Chorley Classes  
preston@dramakids.co.uk  
Tel: 07813 865 482  
Fees: £31.00 per month

**Have a lovely weekend.  
Best wishes, Mrs Hodgson**