

ALL ABOUT



YEAR 2





Hello!

Our names are Miss Halliwell-Parker and Mrs McDonough and we are the Year 2 class teachers.



We are really looking forward to teaching your child/children this academic

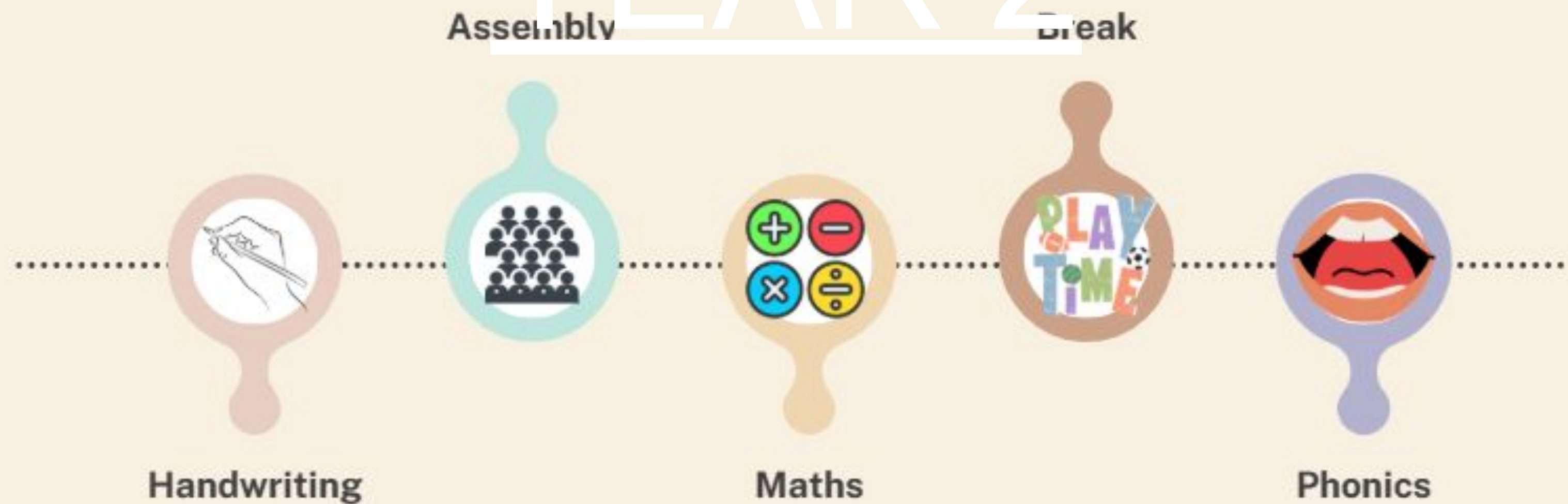




These are our  
wonderful  
Teaching  
Assistants who  
will be helping in  
Year 2 this year.

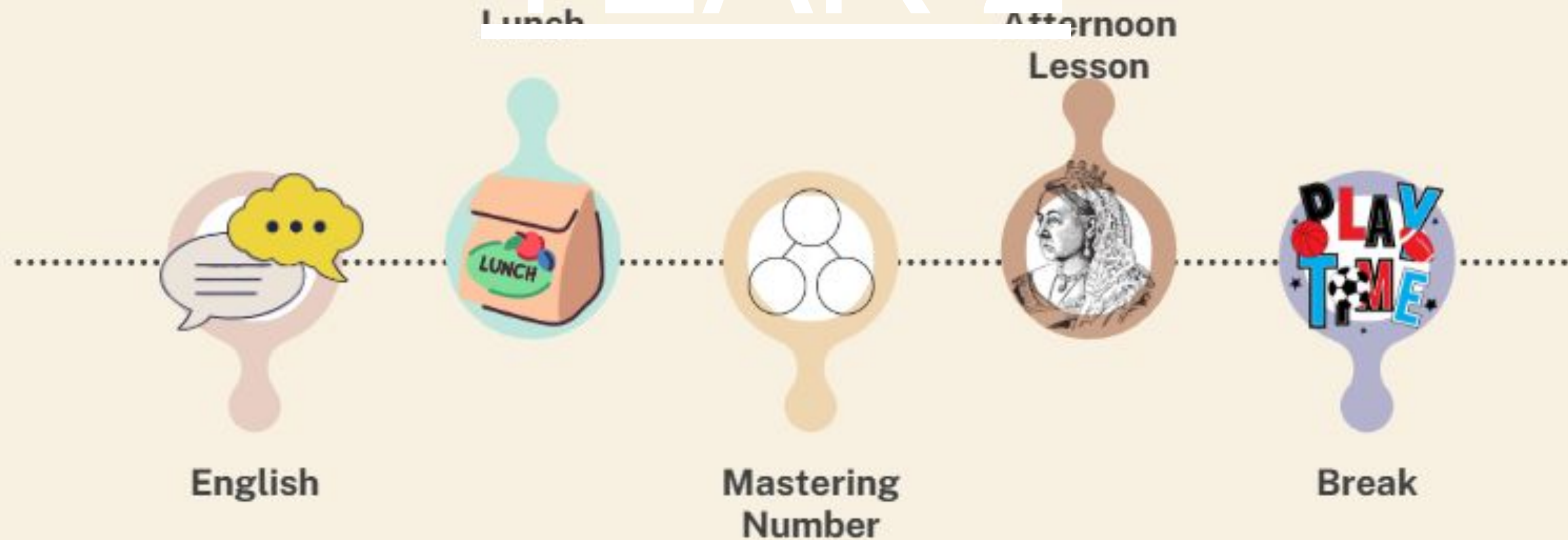


# A TYPICAL DAY IN YEAR 2



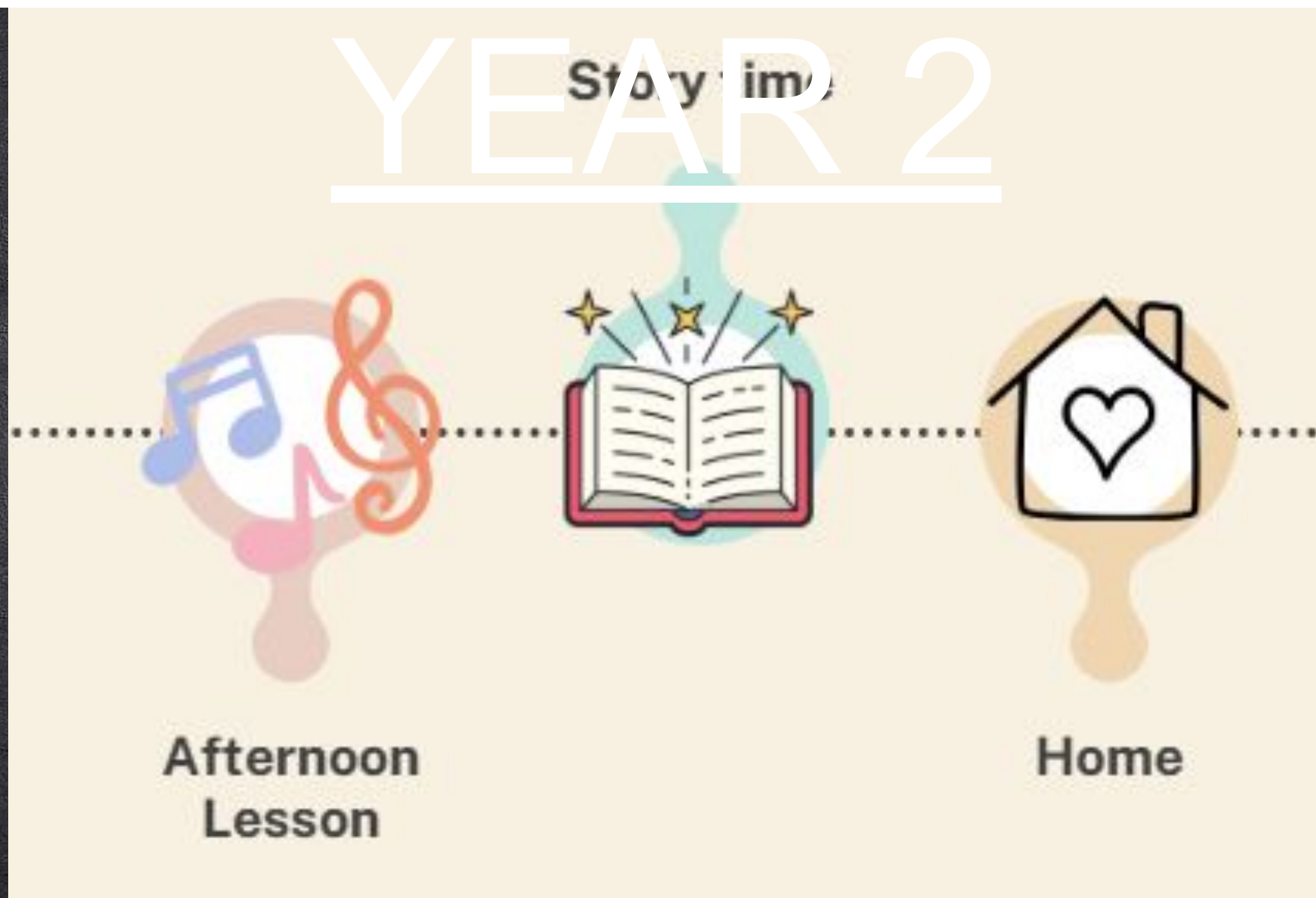


# A TYPICAL DAY IN YEAR 2

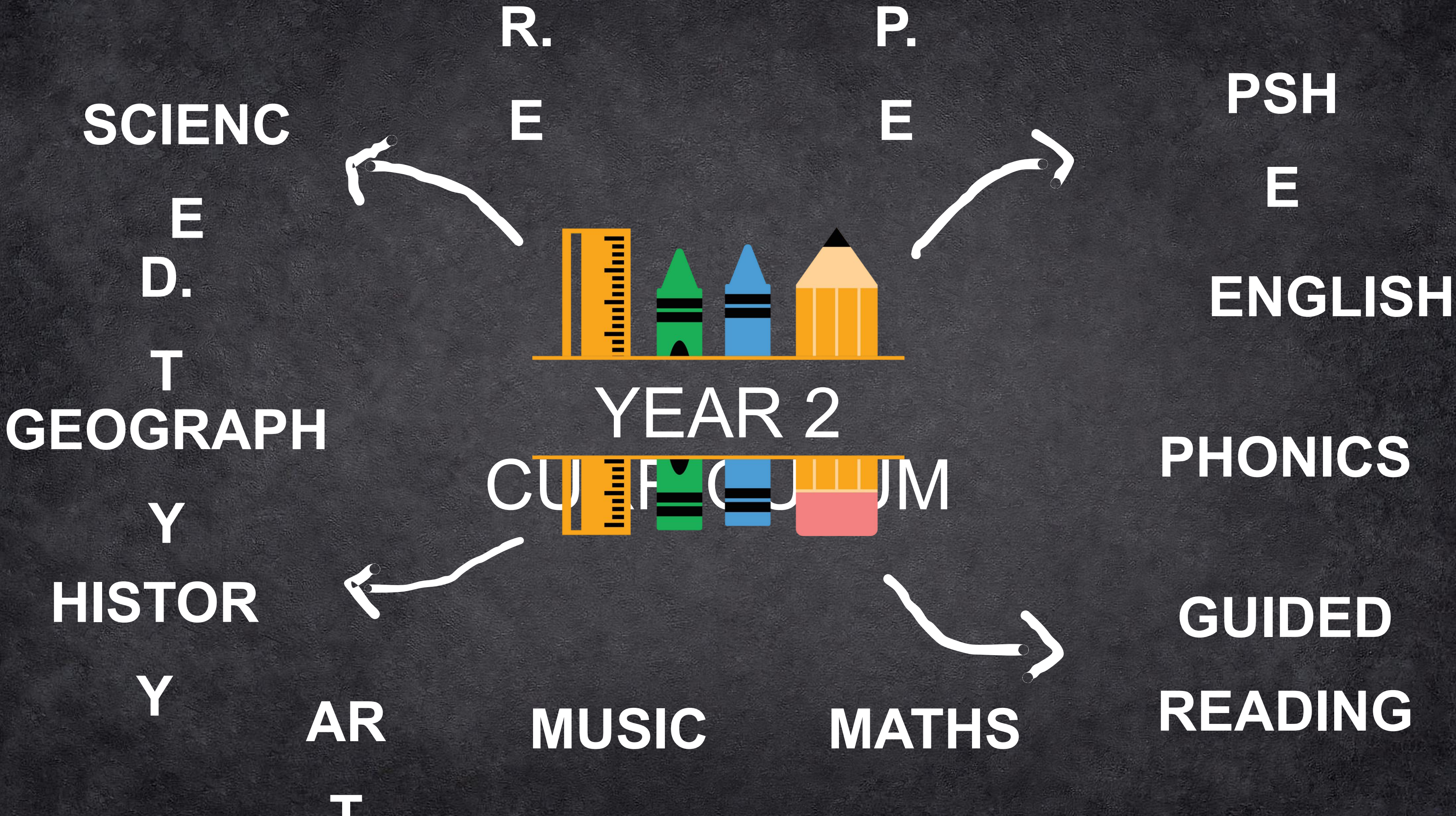




# A TYPICAL DAY IN YEAR 2









# OUR CURRICULUM

Term	Autumn		Spring		Summer	
Connector	Fire! Fire!		Mother Nature		Be the change!	
English	The Way Home for Wolf <ul style="list-style-type: none"> <li>- Wanted poster</li> <li>- Information text</li> <li>- Innovated narrative</li> </ul>	Traditional tales with a twist	Amazing Birds! <ul style="list-style-type: none"> <li>- Non-Chronological Report</li> <li>- Narrative</li> <li>- Persuasive leaflets</li> </ul>		Aladdin <ul style="list-style-type: none"> <li>- Story as a theme</li> <li>- KS1 TAF work</li> <li>- Poetry</li> </ul>	Varmints <ul style="list-style-type: none"> <li>- Setting description (postcard)</li> <li>- Instructions</li> <li>- Narrative - retell</li> </ul>
Science	Everyday Materials		Living things and their habitats	Plants	Animals inc humans	Animals inc humans
History	Substantive concept- Civilisations  Disciplinary knowledge- Causes and consequences  Key question- What features of 17 <sup>th</sup> century London might have helped cause The Great Fire?		Substantive concept- Migration  Disciplinary knowledge- Historical significance  Key question- Why was Learie Constantine awarded the 'Trinity Cross'?		Substantive concept- Leadership  Disciplinary knowledge- Change and continuity   Key question- What is the role of the Royal Family?	
Geography	Where am I going? <ul style="list-style-type: none"> <li>- Mapping skills</li> <li>- Local area fieldwork skills</li> </ul>		Substantive concept- Environmental interaction and sustainable development Physical and human processes  Disciplinary knowledge- Collect, analyse and communicate with a range of data		Substantive concept- Cultural understanding and diversity Interdependence (Fairtrade)  Disciplinary knowledge- Interpret a wide range of sources	



# OUR CURRICULUM

Term	Autumn		Spring		Summer	
Connector	Fire! Fire!		Mother Nature		Be the change!	
Art	Artist study- Henri Matisse  Outcome- GFOL mixed media (collage)		Artist study- Vanessa Barragao  Outcome - Collaborative textile art		Artist study-Andy Warhol  Outcome- Pop-art flower prints	
D.T	Outcome- Chair for Baby Bear		Outcome- Moving pictures (Mechanisms)		Outcome-Chair/Throne (Structures)	
Music	New scheme- Sing Up. Following Y2 curriculum.					
R.E	Christianity- Does how we treat the world matter?	Christianity- Why do Christians say that Jesus is the light of the world?	Hindu Dharma- How might people express their devotion?	Islam- Why do Muslims believe in obeying God?	Christianity- What unites the Christian community?	Judaism- What aspects of life really matter?
P.S.H.E	New scheme- KAPOW Primary. Following Y2 curriculum.					
Computing E-safety covered throughout the year	PPT presentations	Algorithms > SCRATCH	Data Handling > Graphs	Bee-Bots		Animation





# WHITE ROSE

---

# MATHS

For each year group, the scheme of learning includes an overview of the maths that your child should be learning at any point in the year. Each year is split into three terms (autumn, spring and summer), and each term comprises individual blocks of learning about a particular topic.

You'll notice that we spend lots of time building strong number skills in Key Stage 1. These essential core skills lay a solid foundation for more complicated learning later on.

We may sometimes send home worksheets for you to work on with your child. This will really benefit them in class and help them to reach their targets.



# WHITE ROSE

## MATHS

Week 1

Week 2

Week 3

Week 4

Week 5

Week 6

Week 7

Week 8

Week 9

Week 10

Week 11

Week 12

Autumn

Number

**Place value**

FREE TRIAL

[VIEW](#)

Number

**Addition and subtraction**

[VIEW](#)

Geometry

**Shape**

[VIEW](#)

Spring

Measurement

**Money**

[VIEW](#)

Number

**Multiplication and division**

[VIEW](#)

Measurement

**Length and height**

[VIEW](#)

Measurement

**Mass, capacity and temperature**

[VIEW](#)

Summer

Number

**Fractions**

[VIEW](#)

Measurement

**Time**

[VIEW](#)

**Statistics**

[VIEW](#)

Geometry

**Position and direction**

[VIEW](#)

Consolidation





# CLASS DOJO

This is a free information platform where our parents and carers can contact their child's class teacher. Parents may choose to contact their child's teacher via Class Dojo for a short message that the teacher might need to know – nothing deep that needs a conversation back and forth.

The teachers will use it to contact parents directly, for example with reminders for the whole class or maybe a direct short message for one child. We are trialling this as a system and ask all parents and carers to honour the points below which will help make it a success.

- Teachers all have Class Dojo on “quiet hours” from 17:00 to 08:00. This means that they are not required to look at any messages or notifications. It is also muted every weekend and holiday.





# BOOM READER

We will be using Boom Reader as a way to record your child's reading progress. Please ensure that all books are recorded through this app. This app is brand new to us too so there may be some teething problems! Please refer to the Parent Guide that Hodgson has previously sent to help you get started. We will try our best to help if you have any questions!

It is an expectation that your child reads 3x weekly. This will automatically enter them into our class reading raffles!





# TIMES TABLE

TTRS is a fantastic tool to help your child learn their  

# ROCKSTARS

  
times

tables. We will set a focus for your child each half term. Please take time to familiarise yourself with the app and support your child in accessing it. We will share in advance the times table focus for that half term. We will be starting with our two times tables and our first test will be 22nd September. The children will share their results with you verbally. We will test the children in the





# SPELLING SHED

~~We will set weekly spellings on Spelling Shed each~~

week. Spelling Shed has online games in which your child can build points, similar to TTRS. Again, please take time to familiarise yourself with the app and help your child access it. There will be 10 spellings each week. Some weeks will seem harder than others due to the rules that must be taught in Year 2. If your child is struggling, please let us know. We might recommend that some children



# PERSONAL DEVELOPMENT PACT

What is our Personal Development Pact?

At Balshaw Lane Primary School we believe developing a child's personal development is vitally important in order for them to become resilient, confident and happy children who are ready to learn and take the next steps on their educational journey.





# PERSONAL

# DEVELOPMENT PACT

YEAR 2



## TRIPS:

Martin Mere (to support our English unit of Brilliant Birds, Living things and their habitats and animals including humans in Science)  
Geography Field Work around Euxton

## CONFIDENCE AND PERFORMING:

Great Fire of London class assembly  
Nativity  
Balshaw Lane's Got Talent

## VISITORS:

Great Fire of London visitor (history)  
Dentist (P.S.H.E)  
Fire Service (P.H.S.E)  
Faith visitors (RE)  
Author visitor (English)

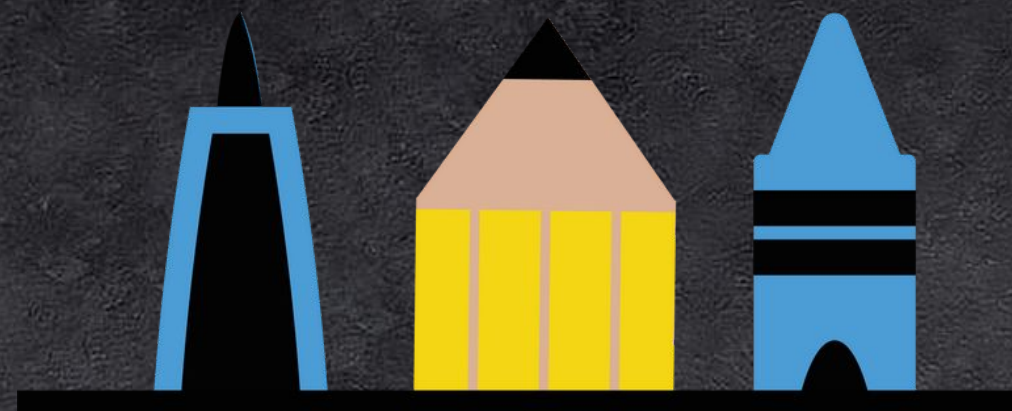
## CURRICULUM ENHANCEMENTS:

Sports competitions  
Collage artist  
Visit Euxton Cricket Club (History - Learie Constantine)  
GFOL visitor scheduled for 13th September (History)

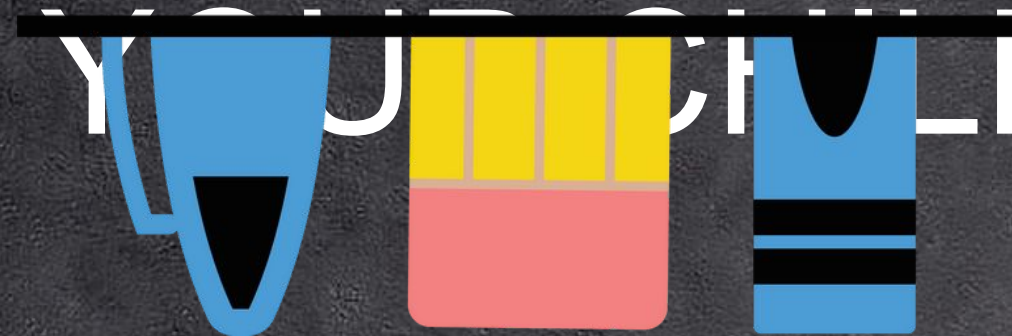
## PD FOCUS FOR YEAR 2:

Getting ready for Key Stage 2!





HELP US TO HELP  
YOUR CHILD



Practise  
spellings!

Practise  
times tables!

Ask your child  
about their  
day!

Read AT  
LEAST  
3x a week!