



BALSHAW'S GRAMMAR SCHOOL
LEYLAND, LANCS.

1782

INDEX

	<i>Page</i>
Absence	11
Agreements	5
Aims	3
Buildings	3
Change of Address, etc.	13
Curriculum	5
Dress	11
Entrance	5
Fees	13
Games	5
Grounds	3
Health	11
History of School	3
Homework	7
Hours of Attendance	5
Houses	7
Medical Examination	7
Merit Lists	7
Old Students' Association	11
Remedial Exercises	7
Reports	7
Scholarships—Entrance and Leaving	13
School Buses.....	13
School Magazine, Calendar, etc.	11
School Meals	13
Senior Mistress	13
Societies, Lectures, etc.	7
Wireless Lectures	7



1782

BALSHAW'S GRAMMAR SCHOOL

LEYLAND, Lancs.

Headmaster:

V. U. OLDLAND, B.A. (LONDON).

Second Master:

H. J. LOMAX, B.Sc. (LONDON), A.R.C.Sc.

Senior Mistress:

MISS M. A. RAHILL, B.A. (LIVERPOOL).

Assistant Masters:

A. J. BULL, M.A. (OXFORD).

[C. S. HILDITCH, B.A. (MANCHESTER)]

B. L. WILKINSON, M.A. (CAMBRIDGE).

F. PARRY, B.Sc. (WALES).

R. A. BENNISON, M.Sc. (DURHAM).

[R. W. FISHER, B.A. (CAMBRIDGE)]

[W. J. DOWNER, M.A. (OXFORD)]

H. HEWARTSON, M. Coll. H.

Assistant Mistresses:

MISS F. W. ROYLE, B.A. (MANCHESTER).

MISS A. MILROY, B.A. (LIVERPOOL).

MISS K. ROBINSON, M.A. (LONDON).

MISS K. WHEWELL, A.R.C.A..

MISS L. S. WHITEHOUSE, University of London Diplomas in Domestic Subjects.

MISS M. K. BARTLETT, Diploma of Chelsea Physical Training College.

MISS C. M. FLETCHER, B.A. (OXFORD)

MISS F. K. LEWIS, B.A. (LONDON).

MISS M. HEPELL, B.A. (LONDON).

[]—On Military Service.



THE SCHOOL
FROM THE
NORTH-EAST

BALSHAW'S GRAMMAR SCHOOL, LEYLAND

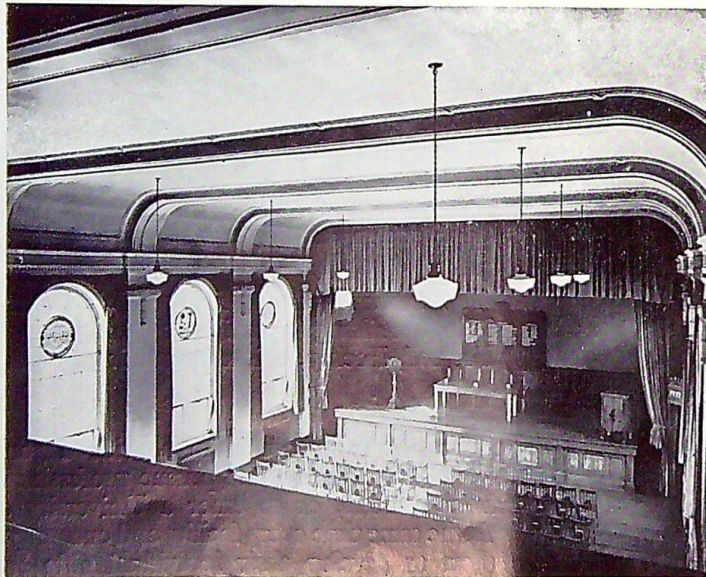
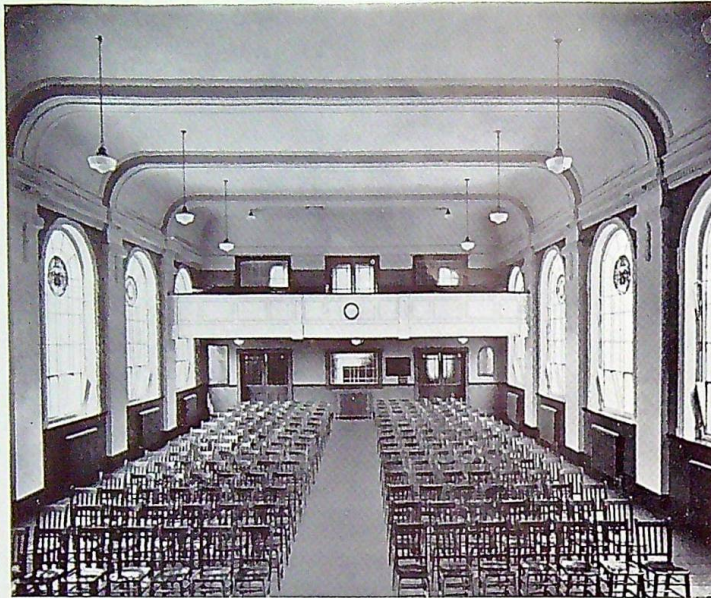
HISTORY OF SCHOOL. On the 14th of June, 1782, Richard Balshaw, a native of Leyland, devoted certain funds to the building and upkeep of a School and Schoolhouse in Leyland. In 1786 and 1790, he augmented the income by the addition of rents arising from several closes of land. Mr. Balshaw died in 1811, and in 1829 his widow conveyed by deed certain premises upon trust in the main for the education of girls. In order that the School might be included among the Secondary Schools of the County, a new scheme was sanctioned by the Board of Education and the Charity Commissioners in 1898, a considerable portion of the Trust Estate being sold and the proceeds applied to the erection of a new school room and class rooms.

BUILDINGS. The existing School was completed in 1931. Beautifully situated in their own grounds of some fifteen acres, the new buildings present an outstanding example of modern school architecture, equipment and lay-out.

Besides the ordinary classrooms and staffrooms there are four Science Laboratories, Geography Room, Art Room, Handicraft Room, Domestic Science Room, Greenhouse, Dining Room, Gymnasium, Library, Prefects' Room, Medical Officer's Room, Kitchens, Cloak Rooms, Changing Rooms containing foot-baths, shower baths, etc., the whole being centred around a dignified Assembly Hall capable of seating over 500 persons. There are in addition eight air-raid shelters.

GROUNDS. The spacious playing-fields adjoining and surrounding the School buildings provide unusually good facilities for Rugby Football, Hockey, Cricket, Rounders, Tennis and Athletic sports.

AIMS. The aim of the School is to provide a good secondary education to fit boys and girls to pursue professional, commercial, or technical careers, or to enter a University or Training College. At the same time every facility and encouragement is given to them to develop their individual gifts and propensities.



INTERIOR OF
THE HALL

The School is examined during the Midsummer Terms under the authority of the Oxford Delegacy and the Northern Universities' Joint Matriculation Board. Pupils are expected to have obtained the School Certificate before promotion into the Sixth Form, where their studies are, in general, specialised.

CURRICULUM. The main subjects of the Curriculum up to School Certificate standard are Religious Instruction, English History, Geography, Latin, French, Mathematics, General Science, Art, Singing, Handicraft, Cookery, Needlework, Physical Training, Elementary Physiology and Greek.

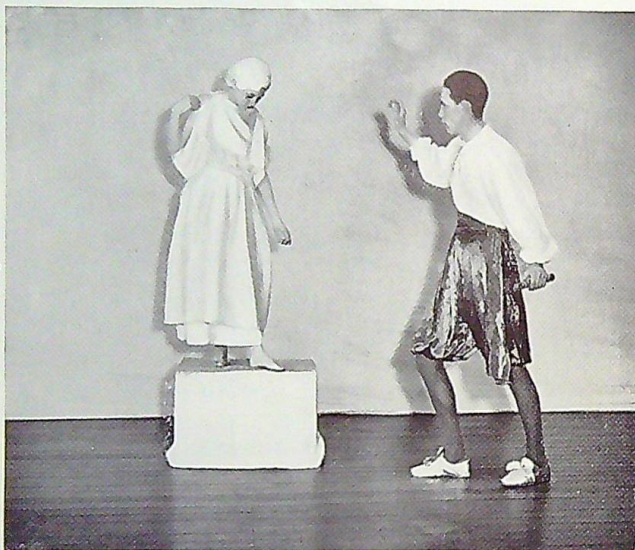
In the Sixth forms there are advanced courses in Classics, Modern Subjects and in Science and Mathematics. All pupils in the Sixth forms are expected to sit for the Higher School certificate two years after obtaining the School Certificate. In these forms, stress is laid upon breadth of outlook and in addition to their examination subjects, all pupils take courses in Economics, Industrial History, Appreciation of Music, Topical Subjects, Appreciation of Art, Geography, Physical Training and Religious Instruction.

AGREEMENTS. In order that pupils should benefit to the full from the advantages to be offered at the School, a parent of a successful applicant will be required to sign a stamped agreement undertaking to keep his child at the School until the end of the term in which he (*or she*) becomes 16 years of age, or, in the case of entrants over 12 years of age, for a period of at least four years. A full term's notice of leaving is required.

ENTRANCE. Pupils are admitted from the age of 10 years, and may remain at School until they become 19 years of age. Parents are strongly recommended to place their children's names on the *waiting list* as soon as possible.

HOURS OF ATTENDANCE. The normal hours of attendance are from 9.0 a.m. to 12.30 p.m., and 1.45 p.m. to 4.0 p.m. on Mondays to Fridays. Saturday is a whole holiday.

GAMES. Every pupil is expected to take part in School games unless certified by a medical man to be physically unfit to participate. Games normally take place after School each day and are so arranged that all boys and girls have an opportunity of taking part in at least two organised matches, or practices, per week. School matches normally take place on Saturdays.



"I could have sworn it moved."

SCENES FROM SCHOOL
DRAMATIC SOCIETY
PRODUCTIONS
1940

"The Prince who was a Piper."

HOUSES. The School is divided into four Houses: Clayton, Cuerden, Farington and Worden. Each House contains both boys and girls with a House Master and a House Mistress in charge. The House spirit is strong and is stimulated by several activities arranged independently by the Houses. In all the principal games there are both League and Knock-out Competitions, arranged on a House basis.

SOCIETIES, LECTURES, ETC. All pupils belong to a School Society of their own choice. The following School Societies meet regularly :— Scientific, French Circle, First Aid, Topical Subjects, Debating, Junior Play Reading, Dancing, Needlework, Arts & Crafts, Photographic, Gardening, Dramatic, Music and Junior Literary. School plays and entertainments are enacted from time to time, and lectures, film displays, concerts and presentations of plays by professional companies are given generally in the Christmas and Easter Terms. In normal times the School also arranges visits to dramatic productions in other towns, camps, cruises and holidays abroad, etc., etc.

MEDICAL EXAMINATION. Every pupil is medically examined periodically by a doctor from the County Medical Department.

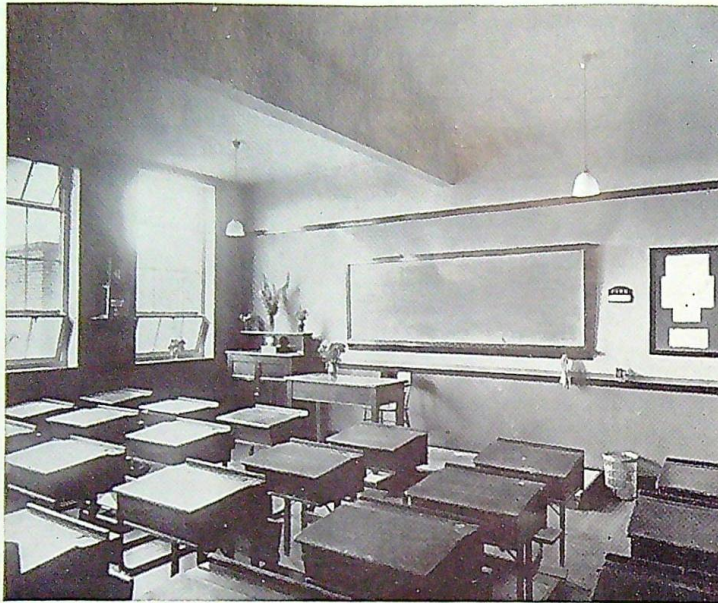
WIRELESS LECTURES. The School possesses a radio-gramophone and several series of broadcast lectures are received each week by forms in School hours.

HOMEWORK. Homework cards are supplied to parents of all pupils. These cards contain full details concerning the length of time allotted for homework for each form, the procedure to be adopted in cases of underworking, or overworking, at home, and other relevant points.

REPORTS. Reports are issued at the end of each term. These reports are designed to give parents as accurate an estimate as possible of their children's progress at School.

MERIT LISTS. Merit lists, showing the position of every pupil in the School in all subjects, are published and distributed to parents at the end of each term.

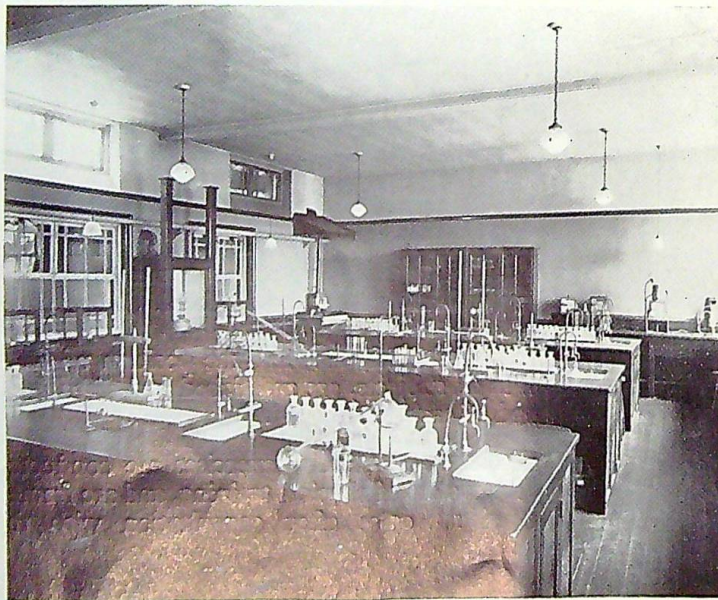
REMEDIAL EXERCISES. Remedial exercises are conducted by the experienced instructors of physical training, and are framed specifically for individual cases after consultation with the medical authority.



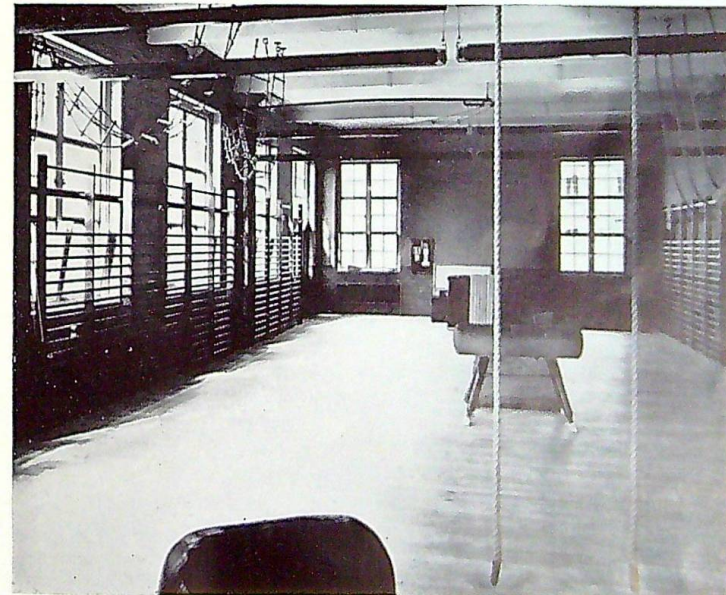
A TYPICAL CLASSROOM



WOODWORK AND METALWORK SHOP

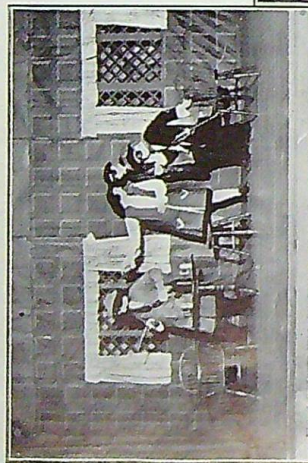


THE CHEMICAL LABORATORY



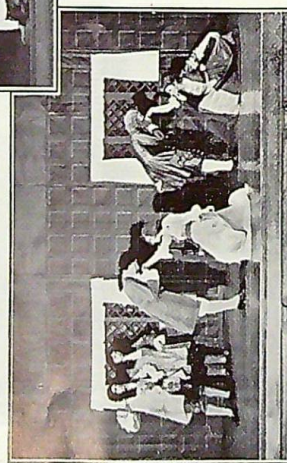
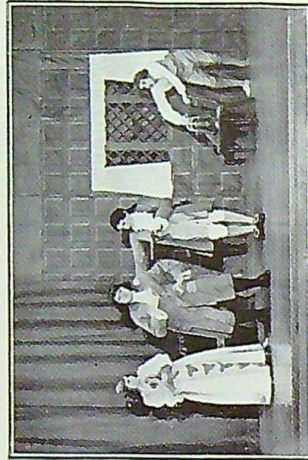
THE GYMNASIUM

Boniface: "At one end of that gallery . . ."



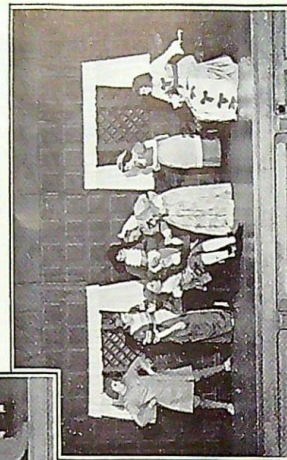
SCENES FROM
SCHOOL DRAMATIC
SOCIETY
PRODUCTIONS
"The Beaux' Strategem"
1941

Archer: "Hold, villain!"



Gavotte

Lady Bountiful: "Drink it off, sir."



SCHOLARSHIPS—ENTRANCE AND LEAVING. County Junior Exhibitions and Local Scholarships for entrance to the School are available for competition each year. In addition, Advanced Course Exhibitions and Bursaries are awarded by the Lancashire Education Committee and are available for pupils taking advanced work. Major Scholarships and Exhibitions, tenable at a University, are also available for competition each year.

SCHOOL MEALS. A School lunch (price 6d.) is provided in the Dining Room each day. It consists of meat or fish, two vegetables and pudding. Tea (price 3d.) is also available any day.

Grade "A" Milk may be obtained each morning at "Break" (price $\frac{1}{2}$ d. per bottle with straw).

SCHOOL BUS. Special School buses leave the Ribble Motor Bus Station, Tithebarn Street, Preston, at 8.20 a.m. daily and pick up pupils en route.

FEES. The fees are £3-1-0 per term, inclusive of books, stationery and games. Fees are payable in advance to the Clerk to the Governors, 47 Lune Street, Preston.

SENIOR MISTRESS. The Headmaster wishes it to be understood that the Senior Mistress is free to interview Girls' Parents at the School during term-time on Fridays, from 4 to 5 p.m., or at other times by appointment.

CHANGE OF ADDRESS, ETC. Any change of address should be notified immediately to the Headmaster's Secretary.

For any further particulars, application should be made to the Headmaster.



"Her eyes, her hair, her expression, her smile"

SCENES FROM SCHOOL
DRAMATIC SOCIETY
PRODUCTIONS
1942
"Miss Elizabeth Bennett."