

Those who are unable to read are advised to go no further.

PRIZES

The one guinea prize for the cover design was won by Kathleen Harrison of U VI Science.

The Junior View competition for a gonk mascot was won by Baker of 3L. A drawing of his creation appears on page 33.



The general reaction to the January edition was encouraging. Below are some opinions taken from letters received by the Editors. Unfortunately the adverse comment was mislaid. 'greatly enjoyed.....a vastly superior magazine' (National Association of School Magazines)

'a distinct improvement on the formal type of school magazine' (an Old Balshavian)

'We unanimously decided that it was by far the best school magazine we had ever seen' (Magazine Committee, the Park School, Preston)

'My purpose is, indeed, a horse of that colour' (Shakespeare
.....)

The School Editors for the next edition will be Kathleen Kazer and Jean Toppin.

The Junior Editor will be Margaret Hoyle of 4/7.

As already announced the next edition of The Balshavian will appear in May and will be followed by a further edition in September. Plans are already well advanced and a number of special projects have been started.

K. 1. sl. 1. 2 tog., v.s. s.o., k to last 4 sts, k 3 tog., k.l., t.b.l.

605 WRITERS.

We hope that more of our 605 writers will let us have stories and articles for our Contributed section. Frankly, the response last time was disappointing. Some people have said that they did not know that it was possible for them to have things included. Could we remind you that the pages of The Balshavian are open to ALL members of the School. Although material for the Comment and Junior View sections tends to be provided by the Senior and Junior Committees, the

Contributed section relies entirely on the efforts of those who are NOT members of the committees.

Stories, essays, letters, etc. should reach the Editors before Friday, 2nd April.

SECRETARIES and others who write reports on society activities are asked to note the date and are reminded of the existence of Special Notes for Secretaries, a copy of which can be obtained on request.

- £ There have been a few - about a dozen - questions about the price of the magazine and we feel it necessary to point out
- (a) that it is not the aim of the magazine to make a profit
 - (b) our only reason for charging for the magazine is that we have a printers' bill to pay - it is the size of this bill that determines the amount that each one of us has to pay.
 - (c) even so, in spite of the fact that we all (including the Editors) pay 2/6 each this only raises about two-thirds of the amount required. The remainder has to be raised from advertising. At first the response from would-be advertisers was disappointing and it is still far from adequate. Help from members of the School in this matter would be greatly appreciated. Do YOU know anyone who might wish to advertise in the pages of The Balshavian? If you do, then please get in touch with Mr. Holmes.

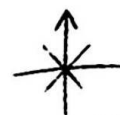
The Balshavian is YOUR magazine - You are its only contributors.

Those who are unable to read are advised to go no further.

PRIZES

The one guinea prize for the cover design was won by Kathleen Harrison of U VI Science.

The Junior View competition for a gonk mascot was won by Baker of 3L. A drawing of his creation appears on page 33.



The general reaction to the January edition was encouraging. Below are some opinions taken from letters received by the Editors. Unfortunately the adverse comment was mislaid. 'greatly enjoyed.....a vastly superior magazine' (National Association of School Magazines)

'a distinct improvement on the formal type of school magazine' (an Old Balshavian)

'We unanimously decided that it was by far the best school magazine we had ever seen' (Magazine Committee, the Park School, Preston)

'My purpose is, indeed, a horse of that colour' (Shakespeare
.....)

The School Editors for the next edition will be Kathleen Kazer and Jean Toppin.

The Junior Editor will be Margaret Hoyle of 4/7.

As already announced the next edition of The Balshavian will appear in May and will be followed by a further edition in September. Plans are already well advanced and a number of special projects have been started.

K. 1. sl. 1. 2 tog., v.s. s.o., k to last 4 sts, k 3 tog., k.l., t.b.l.

605 WRITERS.

We hope that more of our 605 writers will let us have stories and articles for our Contributed section. Frankly, the response last time was disappointing. Some people have said that they did not know that it was possible for them to have things included. Could we remind you that the pages of The Balshavian are open to ALL members of the School. Although material for the Comment and Junior View sections tends to be provided by the Senior and Junior Committees, the

Contributed section relies entirely on the efforts of those who are NOT members of the committees.

Stories, essays, letters, etc. should reach the Editors before Friday, 2nd April.

SECRETARIES and others who write reports on society activities are asked to note the date and are reminded of the existence of Special Notes for Secretaries, a copy of which can be obtained on request.

- £ There have been a few - about a dozen - questions about the price of the magazine and we feel it necessary to point out
- (a) that it is not the aim of the magazine to make a profit
 - (b) our only reason for charging for the magazine is that we have a printers' bill to pay - it is the size of this bill that determines the amount that each one of us has to pay.
 - (c) even so, in spite of the fact that we all (including the Editors) pay 2/6 each this only raises about two-thirds of the amount required. The remainder has to be raised from advertising. At first the response from would-be advertisers was disappointing and it is still far from adequate. Help from members of the School in this matter would be greatly appreciated. Do YOU know anyone who might wish to advertise in the pages of The Balshavian? If you do, then please get in touch with Mr. Holmes.

The Balshavian is YOUR magazine - You are its only contributors.

Magazine Newsletter No.2.

Cur problem

Which of the following was Henry VIII ?

- 1. Charles I
- 2. Edward II
- 3. Henry IV

?

Your problem could be of interest to others. Letters to the Editor are welcome. If you have a problem we shall try to answer it. Letters should be addressed to the Editor and handed to Judith Hunt L VI Arts. Names should be given, although not necessarily for publication.

.....
Anyone can write a short story.
.....

Aren't our teachers wonderful?
"Now, look at the board and I will go through it for you."

Will you forget?
About 120 magazines are bought by Old Balshavians. We should like to increase this number, if only for financial reasons. Do you know any Old Balshavian who might be interested? If you do and if you help to persuade them to subscribe to the magazine you will be doing your magazine a great service. Enquiries will be dealt with by Mr. Leathley.

Never before

In their search for material members of the magazine committee have been having a good look round. The next edition will take a close look at the world of "pop" music magazines, first form secrets, your employment prospects and the hitherto undisclosed facts behind.....

.....
Now, sit down & write a short story.
.....

Members of the School

..... have come forward with only two enquiries about advertising. However, Mr. Holmes has persevered with his task and has managed to secure advertising orders from about ten sources. We cannot afford to relax our efforts until we have at least twice this number. Your help is still urgently needed,

We are grateful for the following advertisements and hope that our readers will patronise the advertisers.

- 'Physics fortifies the over fives.'
- 'Grow with games - vitality guaranteed.'
- 'Its Fab ! Its Foreign! Its French' '
- 'A photograph of your favourite prefect - FREE with every 1,000 lines - start collecting now.'

.....
This is your chance to write a short story.
.....

NEWS OF OLD BALSHAVIANS is most difficult to obtain. If you have any news which you think might be of general interest will you please pass it on to the Editors or to Jackie Beattie.

.....
"The Balshavian" is your magazine - YOU are its only writers.

Balshaw's Grammar School,
Leyland,
Lancs..
March 18th. 1965.

Dear Old Student,

You may or may not know about the re-introduction of 'The Balshavian'. Though the name is familiar, the purpose, style, content and appearance of the school magazine is different. No longer does it claim to be the "organ of the school".

A magazine created by, and for, the school is the aim of the committee, and it is with this in mind that I am writing to you.

In the last edition we included a selection of letters from recent leavers - letters connected with their first impressions of Training College or University life. Already there is a new generation of prospective students.

By putting a few questions to 'old hands' at the Further Education game we seek to help this new generation, to smooth out a few of the many inevitable problems before they arise, - perhaps even to make the prospect of a new life less formidable.

Plainly we rely on your co-operation: we, the members of committee, would therefore be very grateful if you would answer the enclosed questionnaire and return it to school by March 31st.

Yours sincerely,

Jacqueline Rees
(Magazine committee.)

1. What do you like a) most, b) least, about your new life?
2. What was your first reaction to your 'freedom' and 'independence'?
Has this first reaction been modified?
3. How, if at all, has your attitude to school, your old friends, home, your parents, etc., changed?
4. What did you forget to take with you on your first journey?
5. Digs and landladies - any warnings, advice or comment in that direction?
6. Can a student be lonely?
7. How much time per week is spent in compulsory lectures, tutorials, etc.?
8. How much free time do you consider you have per week?
Briefly, how is the time spent?
9. Do you recommend budgeting of time and financial resources?
10. How is one to regard and treat societies?
To how many do you belong?
11. It has been said that coffee, tooth-paste, washing powder, etc., are the great money consumers. What would you add to this list?
12. If you could start all over again, would you do things differently?
What would you change? How? Why?
13. What simple advice, warnings, etc., would you offer to prospective students?
14. How does the reality measure up to your expectations?

WANTED - AT ONCE!

for the New Balwhavian :

* editorial committee - editor, assistants, secretary
(from sixth form)

* publicity secretary

* junior committee (third, fourth, fifth forms)

* writing staff to prepare and write special articles.

* short story writers

* photographers

* illustrators

NEXT EDITION - JANUARY

ENQUIRIES etc. to Mr. Eccles
before Friday 25th September.

* also welcome will be enquiries from those wishing
to take advertising space.

BALSHAW'S GRAMMAR SCHOOL
SCHOOL MAGAZINE

NOTES FOR THOSE RESPONSIBLE FOR WRITING REPORTS.

1. The Editors are able to offer you space in the Magazine to record or publicise the activities of your team, house or society. Special events, such as concerts and plays, are specially reviewed by the Magazine staff.
2. The Editors wish to point out that they can accept for publication only those reports which fulfill the following conditions.
 - (i) Reports must be neatly written (type-written if possible) on one side of paper only. The name of the team, house or society should be written clearly and in capitals at the beginning of the report and the writer's name and form should be given, again in capitals, at the end.
 - (ii) Secretaries and others who write reports should remember that the Magazine is read by the School in general and not just by members of their team or society and a bare account of activities is not normally sufficient to arouse interest. Original presentation is encouraged.
 - (iii) Reports should not normally exceed 250 words, house reports 500 and games reports 500 plus lists of results. If more space is required you must approach the person named below at least one week before the date given..
 - (iv) Your report cannot be accepted after 4 p.m. on the date given below. Again, it may be possible to make a special arrangement provided you do not leave it until the last minute.
 - (v) There will be no follow-up on this notice. If you wish to contribute a report it is now up to you to make sure that it is included.
 - (vi) The Editors are always willing to include photographs provided that they are of suitable quality.

THIS TERM YOUR REPORTS SHOULD BE GIVEN TO.....
NOT LATER THAN 4 P.M. ON

MAGAZINE POPULARITY POLL.

Below is a list of the articles in our May edition.

Will you please choose the five articles which you found most interesting and then show your order of preference by putting the numbers 1 to 5 in the column provided. (1 opposite the article which you liked best, 2 alongside the second best and so on) Remember - we don't want to know which amused you most!

<input type="checkbox"/>	At a tangent
<input type="checkbox"/>	Press conference with the youth employment officer
<input type="checkbox"/>	Review of the "Pirates of Penzance"
<input type="checkbox"/>	Into the fire
<input type="checkbox"/>	Gear guides to dreamland
<input type="checkbox"/>	Context 4 : Astley Park Special School
<input type="checkbox"/>	The Society Question
<input type="checkbox"/>	Once Again Assembled Here
<input type="checkbox"/>	An Omission
<input type="checkbox"/>	With All Good Wishes
<input type="checkbox"/>	Old Balshavian Reunions
<input type="checkbox"/>	Its Up to You.
<input type="checkbox"/>	New Blood
<input type="checkbox"/>	Mr. Miller
<input type="checkbox"/>	From a contemporary : The Escape.
<input type="checkbox"/>	The Head Boy and Head Girl of Worden
<input type="checkbox"/>	Out of This World
<input type="checkbox"/>	Free Wheelers
<input type="checkbox"/>	Oxfam
<input type="checkbox"/>	Save the Children
<input type="checkbox"/>	A Nice Cup of Tea
<input type="checkbox"/>	How it really happened
<input type="checkbox"/>	Crocus
<input type="checkbox"/>	Courage
<input type="checkbox"/>	Expedition to the Middle East
<input type="checkbox"/>	Force X
<input type="checkbox"/>	Escaped
<input type="checkbox"/>	Night
<input type="checkbox"/>	Spit and Polish.

Will you please also give your form

Magazine Newsletter No. 5

We try to report and review as many school activities as possible but until now one activity has always evaded scrutiny - the magazine itself! Intrigued by the possibilities we resolved to submit the magazine to the same scrutiny which we inflict on other school activities. The problem was to find a strictly impartial reader who was nevertheless sufficiently well informed about the School to be able to judge the magazine in the light of the community it serves. We believe that we managed to find such a person in Miss. Hope who until twelve months ago was a member of the school staff and we are very grateful to her for her comments.

The Balshavian : reviewed by Miss. E. Hope

I was very pleased indeed to see 'The Balshavian' again after too long a time during which the magazine had lain dormant. It was certainly worth waiting for.

In the May edition the editors describe the magazine as one which sets out "to avoid boring its readers". This aim is undoubtedly achieved and I sincerely congratulate everybody concerned with its publication. The editors obviously worked hard to produce a lively, individual and, above all, interesting magazine.

I understand that 'The Balshavian' is to be published each term :if the high standard of reporting and the varied and resourceful ideas that I have enjoyed can be sustained, this magazine will be something of which the School can be proud.

It is good, I think, to have both a senior and a junior committee : this will prevent the younger members of the School feeling that 'The Balshavian' is predominantly for the upper strata of the school society. I feel, however, that this magazine is prepared and produced by a comparatively small number of people - and most of these are girls! Perhaps the reason for this is best known to the boys themselves, but when I was at Balshaw's, the boys were certainly rarely without opinions of their own and certainly perfectly able to produce a good piece of written work - imaginative or factual. Do most of the male members of the School consider that helping to produce a jolly good magazine is more a feminine pursuit than a masculine one?

I should like to see a greater number of imaginative poems and essays in your future editions, and although I know that space is limited, the editors might remember that a school magazine is probably the earliest and perhaps the only opportunity a hopeful young writer has of seeing his compositions in print. Many a young poet has had his poem from the school magazine reproduced in a national cultural journal.

The editorial policy of 'The Balshavian' is, I see, "to concentrate on the rare and exceptional events and to ignore the routine and the commonplace". In the first two publications under the new administration I was delighted to read articles of a rare and exceptional nature, by both present and past Balshavians, but perhaps it would be better not "to ignore the routine and the commonplace" entirely. Many a pupil loves to find his own name appearing however humbly, in the school magazine and I think that what may appear routine and commonplace to the magazine editorial staff, may be most rare and exceptional to the boy or girl who has at last excelled in one sphere or other of school life.

It is splendid to branch out and include reports (and very good reports) of visits to other types of schools, for instance: in this way a school magazine is moving into the wider field of journalism, but I think that a school publication has a double function to fulfil. It must be individual, go-ahead and entertaining, as the new 'Balshavian' is, but it must also be a record of the termly occurrences of the school's life - of which the average reader might wish to know more.

I do not wish to criticise adversely and thus make it seem that the new 'Balshavian' is not fully appreciated ; it is. But please could someone explain the significance of the six black feet tramping up the cover of my second copy, and please would someone ensure that the printers put the apostrophe in 'Balshaw's' on the vital first page in the right place in the next edition?

March 1967

The Editors feel that it would be both interesting and useful to gather together from those who have recently undergone interviews details of their experiences and to put these into an article in the May edition. Accordingly all members of the Upper Sixth are being asked to participate by supplying information along the lines suggested by the following questions. If the questions are not appropriate please amend to suit circumstances. (Names not required.)

Unsuccessful interviews should not be included in questions 1 to 3

1. Please give name of college or university, and add course intended, or, if neither of these, please simply name proposed occupation. A
If several, please list A, B, C, etc. and use these B
same letters to distinguish between different C
interviews in later questions. _____
2. Have you been offered a place without interview? _____
If so, please state grades _____
asked for. A B C
3. What offers have you received following interview? _____
Definite or provisional - if provisional please A
give grades. B C

Unsuccessful interviews can now be included.

4. Please will you describe the interview(s), your interviewers and the questions which they asked?

Continue on other side if necessary.

5. What questions did you ask and did you receive satisfactory replies?

6. Were you offered help and advice? A _____ B _____ C _____
7. Were you given an adequate chance to look round? A _____ B _____ C _____
8. What hospitality was offered? A _____
B _____ C _____
9. What advice would you pass on to future interviewees? _____

10. Do you feel satisfied with the interview and its results? _____

(Further points may be added on the reverse side.)

Guest Speakers. The initial invitation, once it has received the necessary approval from the committee, should be sent well enough in advance to allow ample time for an exchange of letters, say at least three weeks before the date fixed for finalising the programme. It should contain precise information : exactly what is required

people involved (audience,
other speakers)

time, date, place.

nature of refreshments

fees and/or expenses

s.a.e.

An acknowledgement should be sent if the invitation is accepted.

Reception - adequate arrangements should be made to make guest welcome and comfortable.

Thank you note, etc., should be sent on the day after the meeting in question.

Other Guests. Invitations to be sent not less than one week in advance.

Visits. Date, plus as many other details as possible, by finalisation day.

Headmaster to be informed of date, time, place, nature and cost of visit, together with numbers or names of those involved, at least one week before visit takes place. (Permission will of course have been previously obtained at the planning stage.) If numbers only are supplied, names should be added BEFORE visit takes place. Money due for tickets and/or travel to be collected before visit, not after.

Finance. Bills and claims for expenses to be submitted to the Treasurer promptly, on the day after the event if possible.

Publicity. Each event should have the following publicity -

- a. School Magazine
- b. Membership card
- c. Newsletter
- d. Noticeboards - for at least one week prior to event.

e. additional posters if possible

Details. Date, time, place.

Nature of event.

Cost.

Whether guests are invited, if so give cost.

Other helpful information.

If names are asked for it should be clearly stated when list closes.

Names of those in charge.

Events in school. Room : consult others who might have claim on same room not later than one week in advance.

The caretaker should always be informed of evening meetings not later than previous school day.

Equipment : if any equipment is required make sure that it will be available. Do not assume that it can be

used - ask permission, not later than day before even

Seating and other arrangements : make adequate arrangements for preparing room (make it look as attractive as possible) and for leaving it tidy afterwards. All equipment, inc. chairs to be returned to proper place.

Sub-committees will attend to all details - letters, publicity, transport, room preparation, refreshments, finances - but it is assumed that all members of the main committee will give assistance in each and every detail. It is also assumed that members of the Society will be invited to assist whenever possible.

The effectiveness of our work on the committee has been seriously hampered during recent weeks as a result of the non-attendance of members, who for many different reasons have found it difficult to be present. Despite this, however, planning for our next session is under way and it is our aim to complete our programme at a meeting at one o'clock next Monday, 12th December, and, if this is not sufficient, to continue at four o'clock until our work is finished.

One source of delay has been the need to deal with matters arising out of our current programme. At the moment, for example, our energies are directed towards the end of term dance. As members already know, this will take place on Wednesday, 21st December. Unlike recent dances, it has been decided to hire a band in the hope that it will be both more versatile and of better quality than some of the groups that we have had recently. Our main hope is that as a result of less noise and greater variety the whole event will be found more enjoyable by those who come. It is recognised that there will be a certain need "to enter into the spirit of the thing" and that there might be a need for a little practice beforehand. We are very pleased to be able to tell you that Miss Groves and other members of the Staff and of the Society are planning lunchtime practice sessions, the first of which will be on Wednesday, 7th December. Form representatives will be able to tell you of time and place.

One difficulty that has arisen is that as a result of the Carol Service we shall not be able to start preparing the Hall until after four o'clock. Offers of help will be gratefully received!

Because we suspect the acoustics of the Hall (as far as films are concerned) we are considering using the dining room for our film on Thursday, 8th December, with suitable adjustments to the seating, of course!

We have also been somewhat preoccupied with the problems of organising out of school visits. The simple fact is that too many people want to join the parties, with the subsidiary problem that not many of our members seem to understand the procedure. It might be useful if we adopted certain rules, perhaps on the following basis (which has already been used)-

1. Members who wish to join the party are invited to sign their names by a certain date.
2. If there are more applicants than places then the following methods of selection are to be used -
 - (a) if a further visit is not possible within the next twelve months places will be allocated on the basis of an equal number for each form, preference within the form being given to those who signed first.
 - (b) if a further visit is possible during the next twelve months preference will be given to the Upper Sixth on the assumption that the Lower Sixth will have their chance during the following year.
3. When the party has been selected the names of those selected will be posted in each form room. Those listed will thereby become responsible for payment or for finding a replacement. In future no reserves will be named.

At our meeting next Monday we shall be reaching a decision on

next term's programme. Some of the likely proposals are as follows.

1. that, in order to co-operate with other activities, lunch time meetings should take place on alternate Mondays instead of Tuesdays.
2. that, in view of the shortness of next term, the programme should continue into the summer term with events taking place either after the exams or well before.
3. that dates be arranged for the following visits -
 - a. an observatory
 - b. gas works
 - c. cotton mills
 - d. newspapers (repeat)
 - e. food factory
4. that, again, three theatre visits should be planned.
5. that mountaineering should be the subject of an evening meeting in school
6. that joint meetings be planned with neighbouring schools—possibly on a competitive basis
7. that lectures on topics suggested in the recent questionnaire should be planned (Archaeology, psychology, morality, jazz, astronomy, etc. — two from these.)

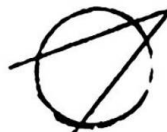
Form representatives will be glad to have your views and to raise matters on your behalf at the meeting.

H.E.

6.xii.66.

Sixth
Form
Society

Newspaper Visit
Guardian & Daily Mail
Friday 2nd December



95 of our members asked to be included in the party but as only 45 places were available it has been decided to give preference to members of the Upper Sixth and to arrange a further visit next term for members of the Lower Sixth. As with other such visits, the major problem is that the size of each party is always strictly limited by our hosts, usually to 15 or 20.

The names of the party are given below. If your name is included and you are no longer able to join the party will you please inform Mr. Eccles without delay so that your place can be offered to one of the reserves.

Cost : 4/9 to be paid to your form representative before 2.12.66.

Time of departure : 6.50 p.m. from School. Return : c.11.30.

U.6.A (in order of signing)

1. Jennifer Dalton
2. Farnington
3. Alison King
4. Jennifer Hodgson
5. Elizabeth Nightingale
6. Linda Kidd
7. June Holden
8. Bradley
9. Susan Fisher
10. Elizabeth Bamber
11. Marlene Cleminson
12. Barbara Antoine
13. Pat Wildman
14. Frances Newsham
15. Kathleen Glover
16. Williams
17. Joan McAweney
18. Audrey Aspinall
19. Patricia Morement
20. Suzanne Thomson
21. Moss crop
22. Parr
23. Ann Marland
24. Wildman

U.6.Sc.

25. Ryding
26. Seward
27. Rawcliffe
28. Kathleen Wilkinson
29. Jean Prescott
30. Alexandra Porteous
31. J. Cocker
32. Hilary Sumner
33. Gott
34. Iddon
35. Henderson
36. Brown
37. Hope
38. Vicki Spry
39. Beales
40. Hilton
41. Bracewell
42. Oakes
43. A. Baird
- L.6.A.
44. Watson
- L.6.Sc
45. Julia Holmes

- Reserves:
46. Nelson L.6.A.
 47. Jones L.6.Sc.
 48. Waring L.6.A.
 49. Skidmore L.6.Sc.
 50. Chadwick L.6.A.

SIXTH Form Society : Questionnaire

Form (your name is not required)

Members of the Society are invited to answer the following questions in order to assist the Committee to plan next term's programme as effectively as possible.

Evening Events

1. Would you be willing to support meetings at 4 o'clock? _____
2. Which is the best time for an evening meeting 6.30, 7.00, 7.30 _____
as far as you are concerned? _____
3. Please tick any of the following that you would be willing to support, adding suggestions where these are asked for. _____
 - (a) inter-school games evening _____
 - (b) inter-school debate _____
 - (c) films
 - (i) any type _____
 - (ii) comedies _____
 - (iii) serious modern drama _____
 - (iv) old classical films _____
 - (v) foreign language films (with sub-titles) _____
 - (vi) westerns _____

Can you suggest any particular titles? _____

 - (d) Theatre visits
 - (i) modern comedies _____
 - (ii) serious modern _____
 - (iii) classics _____
 - (iv) opera _____
 - (v) music (classical) _____
 - (vi) jazz _____
 - (e) Can you suggest at least two subjects for lectures?
 1. _____
 2. _____
 3. _____
 - (f) Outside visits
 - (i) to observatory _____
 - (ii) cotton mill _____
 - (iii) other factories _____
(Suggestions 1. _____)
(2. _____)
(3. _____)
 - (iv) art gallery _____

(Further suggestions? _____)
(_____)
 - (g) 'theme' evenings (Black & White) _____
 - (h) Any Questions _____
On what subject? _____

4. Would you support visits arranged for Saturdays? _____

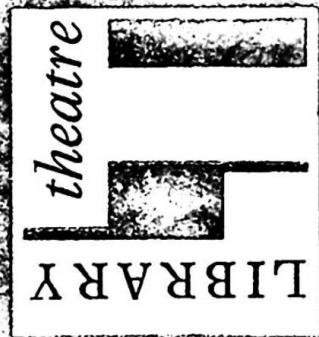
5. Which weekday evening is impossible for you personally? _____

Lunch time meetings

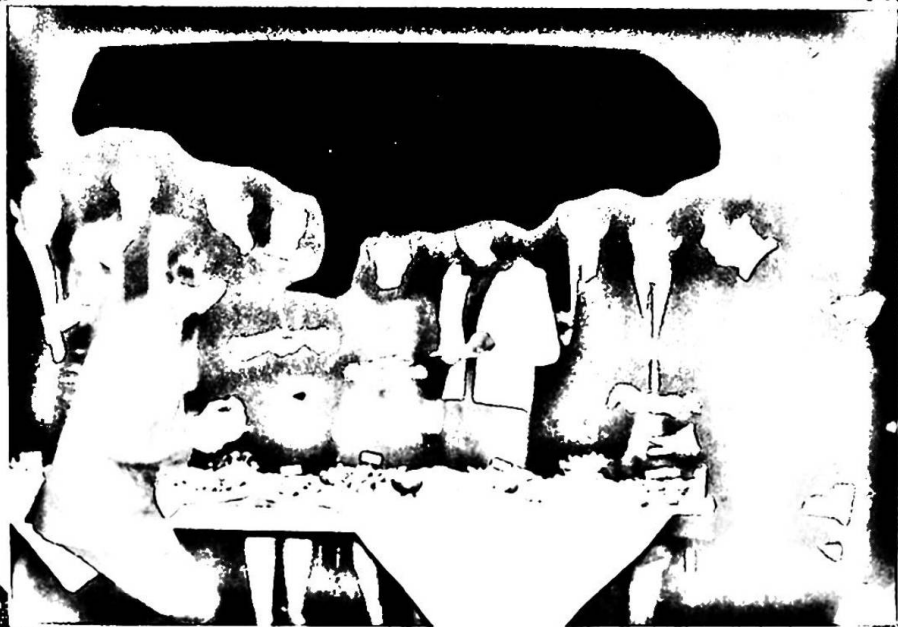
1. Which type do you prefer (tick more than one?)
 - a. open discussion _____
 - b. small group discussion _____
 - c. film plus discussion _____
 - d. Speaker plus discussion _____
 - e. a more formal debate _____
2. Is one per fortnight sufficient? _____
3. Would you like to suggest subjects? _____

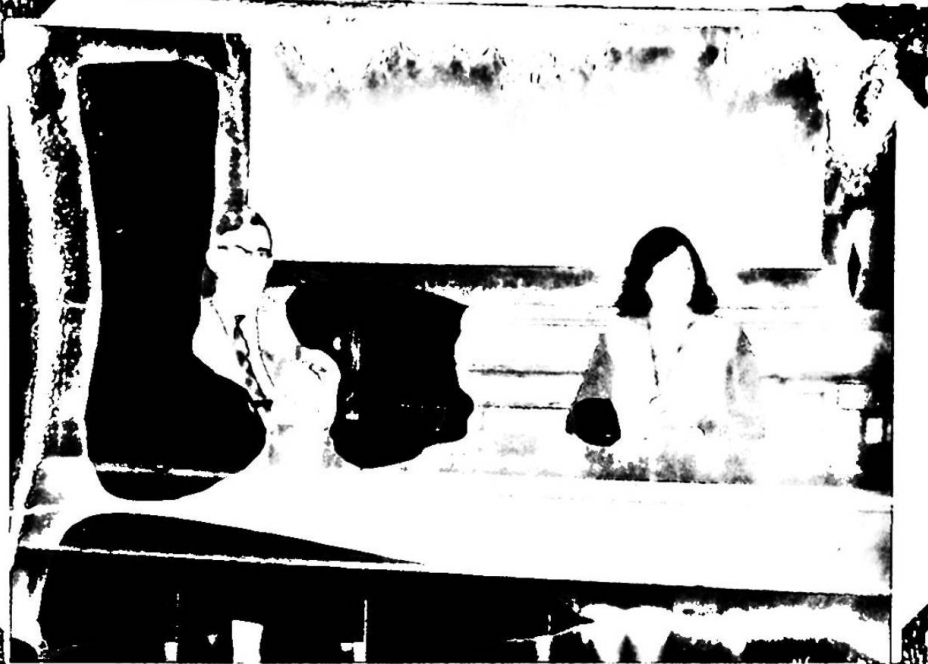
Further Comments which might prove helpful

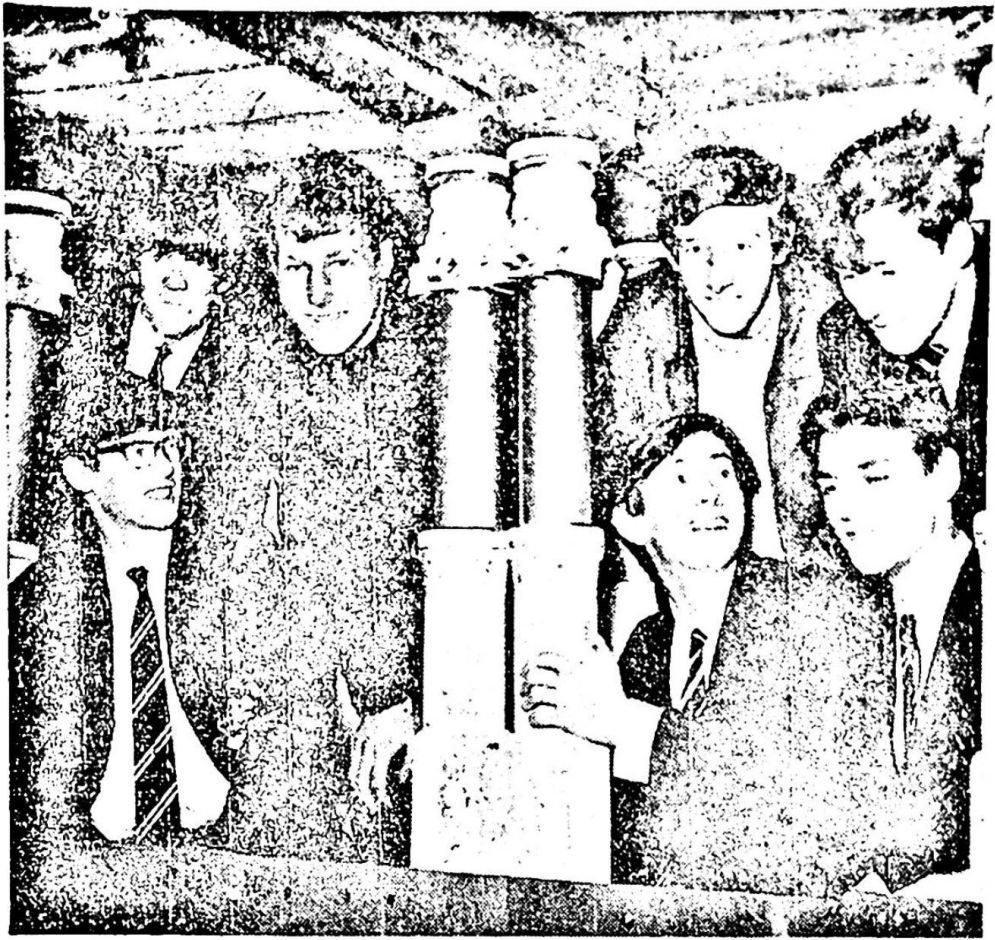
PROGRAMME SIXPENCE











School's mine of information

SENIOR boys from Balshaws Grammar School, Leyland, joined miners underground at two collieries to see how a modern pit operates and how coal is won in the highly mechanised collieries of today.

More than 40 pupils from the school visited Golborne Colliery, near Leigh, and nearby Parkside Colliery, the North-West's newest pit.

The boys changed into overalls and wore safety helmets, and later the parties joined forces for a tour of the

surface installations at Parkside.

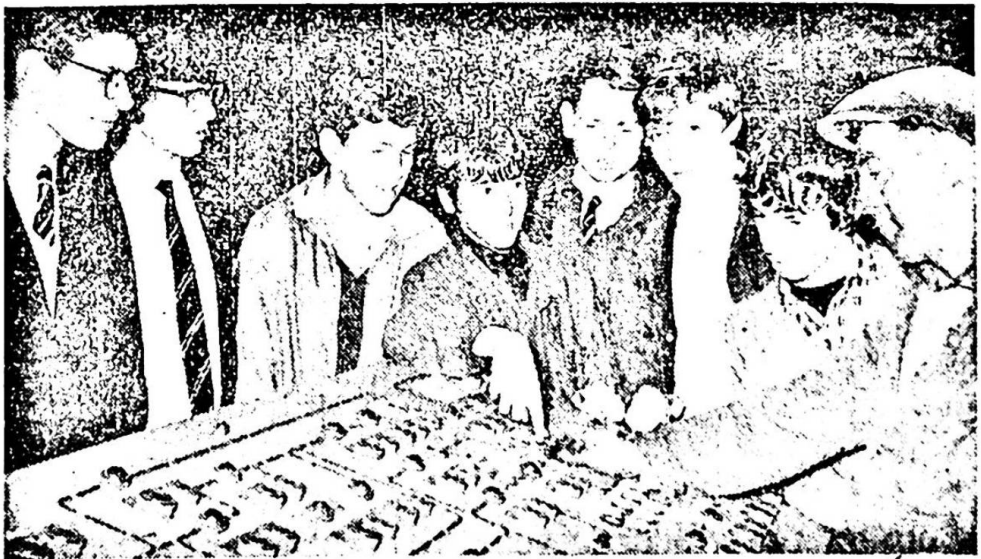
There was opportunity for pupils and teachers to discuss career prospects in the mining industry, which has one of the finest apprenticeship schemes in the country.

Boys were interested to learn that university scholarships in various subjects are available and that entrants into the industry are encouraged to continue their education to obtain the highest possible qualifications.

Lord Robens, NCB chairman, will be visiting Leyland shortly to attend the school's speech day.

Above: Boys from the school pictured among the roof supports on a mock coal face built on the surface at Parkside Colliery. The mock face has been built for a safety campaign — and the pupils were able to see the real thing when they went underground.

Below: The boys also visited the power house.



THE
PLAYHOUSE

LIVERPOOL REPERTORY THEATRE

PROGRAMME

THE
QUARE FELLOW

by Brendan Behan



Tuesday, 22nd September to
Saturday, 10th October, 1964



Guest Speakers. The initial invitation, once it has received the necessary approval from the committee, should be sent well enough in advance to allow ample time for an exchange of letters, say at least three weeks before the date fixed for finalising the programme. It should contain precise information : exactly what is required

people involved (audience,
other speakers,
time, date, place.
nature of refreshments
fees and/or expenses
s.a.e.

An acknowledgement should be sent if the invitation is accepted.

Reception - adequate arrangements should be made to make guest welcome and comfortable.

Thank you note, etc., should be sent on the day after the meeting in question.

Other Guests. Invitations to be sent not less than one week in advance.

Visits. Date, plus as many other details as possible, by finalisation day.
Headmaster to be informed of date, time, place, nature and cost of visit, together with numbers or names of those involved, at least one week before visit takes place. (Permission will of course have been previously obtained at the planning stage.) If numbers only are supplied, names should be added BEFORE visit takes place.
Money due for tickets and/or travel to be collected before visit, not after.

Finance. Bills and claims for expenses to be submitted to the Treasurer promptly, on the day after the event if possible.

Publicity. Each event should have the following publicity -
a. School Magazine
b. Membership card
c. Newsletter
d. Noticeboards - for at least one week prior to event.
e. additional posters if possible

Details. Date, time, place.
Nature of event.
Cost.
Whether guests are invited, if so give cost.
Other helpful information.
If names are asked for it should be clearly stated when list closes.
Names of those in charge.

Events in school. Room : consult others who might have claim on same room not later than one week in advance.
The caretaker should always be informed of evening meetings not later than previous school day.
Equipment : if any equipment is required make sure that it will be available. Do not assume that it can be used - ask permission, not later than day before event.
Seating and other arrangements : make adequate arrangements for preparing room (make it look as attractive as possible) and for leaving it tidy afterwards. All equipment, inc. chairs to be returned to proper place.

Sub-committees will attend to all details - letters, publicity, transport, room preparation, refreshments, finances - but it is assumed that all members of the main committee will give assistance in each and every detail. It is also assumed that members of the Society will be invited to assist whenever possible.

PROGRAMME

Fri., 2nd Sept:

Elections at 1-45 p.m.

Thurs., 8th Sept:

Any Questions about Further Education 7-00 p.m.

Tues., 13th Sept:

One o'clock confab and film: race problems.

Tues., 27th Sept:

One o'clock confab: crime.

Fri., 30th Sept:

Theatre: "Long Day's Journey into Night": Manchester*.

Mon., 10th Oct:

Film: "Billy Budd" 7-30 p.m.

Tues., 11th Oct:

One o'clock confab: advertising.

Mon., 17th Oct:

Theatre: "As You Like It": Manchester*.

Thu., 20th Oct:

Members' Evening 7-30 p.m.

Tues., 1st Nov:

One o'clock confab and film: abortion

Mon., 7th Nov:

Theatre visit to Liverpool.

Tues., 15th Nov

One o'clock confab: equality and freedom

Fri., 2nd Dec:

Newspaper visit (evening).

Fri., 9th Dec:

Film: "The Caretaker" 7-30 p.m.

Mon., 12th Dec:

Visit to Calder Hall Power Station (afternoon).

Wed., 21st Dec:

Dance.

* Likely dates only.

Dates are also being arranged for the following:

Visit to a colliery

Lecture "Psychology & Religion".

Lecture: "Uses of Atomic Energy".

PROGRAMME

Wed., 11th Jan.:
Film: "Billy Budd" 7.30 p.m.

Thu., 12th Jan.:
Visit to Preston Observatory 7-30 p.m.

Mon., 16th Jan.:
Confab: "Probation" 1-00 p.m.

Thu., 19th Jan.:
Visit to Preston Observatory 7-30 p.m.

Wed., 25th Jan.:
Lecture: "Superstition" 7-30 p.m.

Mon., 30th Jan.:
Confab: "Moral Welfare" 1-00 p.m.

Thu., 2nd Feb.:
Members' Evening 7-30 p.m.

Thu., 16th Feb.:
Film: "Only Two Can Play" 7-30 p.m.

Mon., 20th Feb.:
Confab: "Child Welfare" 1-00 p.m.

Mon., 20th Feb.:
Debate and games v. Chorley G.S.
7-30 p.m.

Fri., 24th Feb.:
Theatre visit: "Streetcar Named
Desire" 6-00 p.m.

Wed., 1 Mar.:
Lecture: "The Solar System" 7-30 p.m.

Sat., 4th Mar.:
Concert: Liverpool Philharmonic Hall
(evening).

Mon., 6th Mar.:
Debate: "Welfare State" 1-00 p.m.

Tue., 7th Mar.:
Visit to Cotton Mill (evening).

Tue., 14th Mar.:
Visit to Cotton Mill (evening).

Tue., 21st Mar.:
Theatre visit: "The Hollow Crown"
6-00 p.m.

Mon., 10th Apr.:
Theatre visit: "Hamlet of Stepney
Green" 6-00 p.m.

Mon., 24th Apr.:
Visit to Lostock Hall Gas Works.

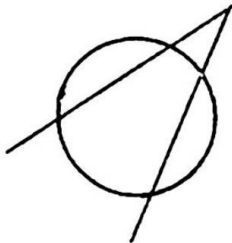
Other events will be arranged after the
summer examinations. Always check
details with the weekly newsletter.



"Perhaps, like Lawrence, Buñuel is only an inverted idealist
Perhaps it is his great tenderness, the great purity and
poetry of his vision, which forces him to reveal the abomin-
able, the malicious, the ugly and the hypocritical falsities
of man.... Either you are crazy, like the rest of civilised
humanity, or you are sane and healthy like Buñuel. And if
you are sane and healthy you are an anarchist and throw
bombs" (Henry Miller)

LOS OLVIDADOS

Balshaw's
SIXTH FORM
SOCIETY
Film Evening
Wednesday
27th September



Luis Buñuel

A Buñuel film is like raw spirit poured straight on to an open wound, a stinging, cauterising therapy of shock.

"I am against conventional morals, traditional phantasms, sentimentalism, and all that moral uncleanness that sentimentalism introduces into society. Bourgeois morality is for me immoral, and to be fought...."

He has been fighting it, weapons, strategy, and tactics almost unchanged over the years, ever since *L'Age d'or*, that surrealist testament, was first shown in Paris thirty-three years ago and the police had to be called in to clear the cinema.

At the end of the war Buñuel was little more than a name in the cinema text-books, a film-maker who had not been heard from in more than a decade, a survivor from the remote enthusiasms of surrealism, an exile from his own country who had vanished into obscure film jobs in Hollywood and New York. Then, in 1950, came *Los Olvidados*, not the first of his Mexican films but the one which unmistakably signalled his return as an artist who had surrendered none of his old ability to disturb.

Set in the shanty-town slums of Mexico city, the study of an urchin gang brutalised beyond hope of recovery, subjects for comprehension rather than regret, Los Olvidados retains the authentic quality of nightmare, the old surrealist shock transported this time to a realistic setting. Buñuel refuses to compromise the desperation and violence of his theme: the anarchist sees the world as a place of horror, and he is not going to suggest that a little goodwill and a few social workers could put it to rights.

There followed El, a blinding study in paranoia, and his entirely unexpected version of Robinson Crusoe, an account of the desolation of one man alone, but also of the small human triumphs - the meeting with Man Friday, the coming to terms with nature - done with an affection and even a serenity to confound critics of Buñuel the black sadist. Buñuel's latest film, the title of which we have forgotten, won one of the major awards at the Venice film festival only a fortnight ago.

From 'The Contemporary Cinema'
by Penelope Houston.

[[[
]]]]



[[[
]]]]

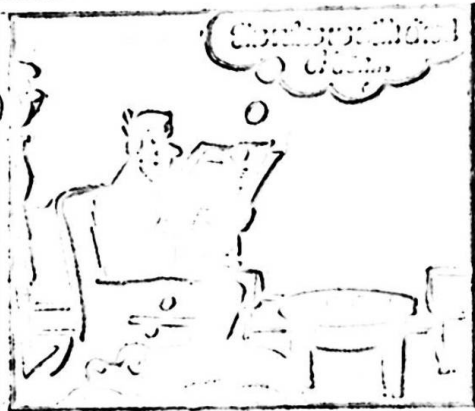
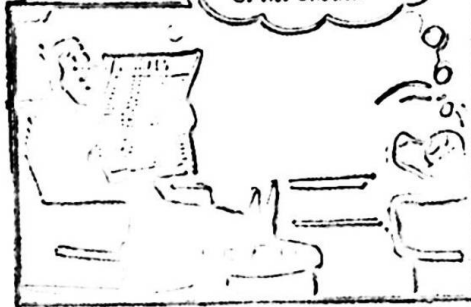


[[[
]]]]



[[[
]]]]

THE FIRST
by CHAS. M.





**long
day's
journey
into
night**

by eugene o'neill

CENTURY THEATRE SEASON

SIXTH
FORM
SOCIETY

Observatory
Visits

55 members expressed a wish to join the parties and so a third party has been formed and a visit will be arranged for this party during the next few weeks. Preference was given to members of the Upper Sixth in the first place because they have examinations later in the term and because it is possible on this occasion to arrange a further visit.

	Party A Jan. 12		Party B Jan 19		Party C Date later
U6S	Oakes	U6S	J. Prescott	L6S	Davies
	Dean		A. Baird		Skidmore
	Henderson	U6A	C. Charnock		Ashmore
	Taylor		J. McAweney		Wrennall
	Iddon		S. Thomson		Bradshaw
	Brown		A. Aspinall		Balmforth
	Seward		D. Coles		Foster
	Gott		P. Morement	L6A	G. Hayward
	Bracewell	L6S	Dawes		E. Godsell
	Sawyer		Jones		C. Wilkinson
	Ryding		Baldwin		S. Trenchard
	A. Porteous		Sutch		Y. Elliott
	H. Sumner		Kerfoot		H. Clark
	J. Cocker		Hodkinson		F. Southworth
	L. Stephenson	L6A	Nelson		E. Cobham
U6A	B. Antoine		Kirkham		
	J. Simpson		Waring		
L6S	Jackson		J. Parr		
	Forrest		H. Penman		
	Salter		J. Bateson		

Some of those who attended Wednesday's meeting will no doubt be surprised to find themselves in party C - I'm afraid we (I) miscalculated rather! Please check and keep me informed of any changes or additions.

H. E.

11. 1. '67

Sixth
Form
Society

Visit to Calder Hall Power Station
Tuesday, 13th December

96 of our members asked to be included in the party but as only 39 places were available it has been decided to give preference to the Upper Sixth and to arrange a further visit for members of the Lower Sixth later next term.

The names of members of the party are listed below. If you are no longer able to join the party will you please inform Mr. Eccles without delay so that your place can be offered to one of the reserves.

Cost: 7/- to be paid to form rep. before the visit.

Depart : School 9.30 a.m.

Return : early evening.

U.6.Sc. (in order of signing)

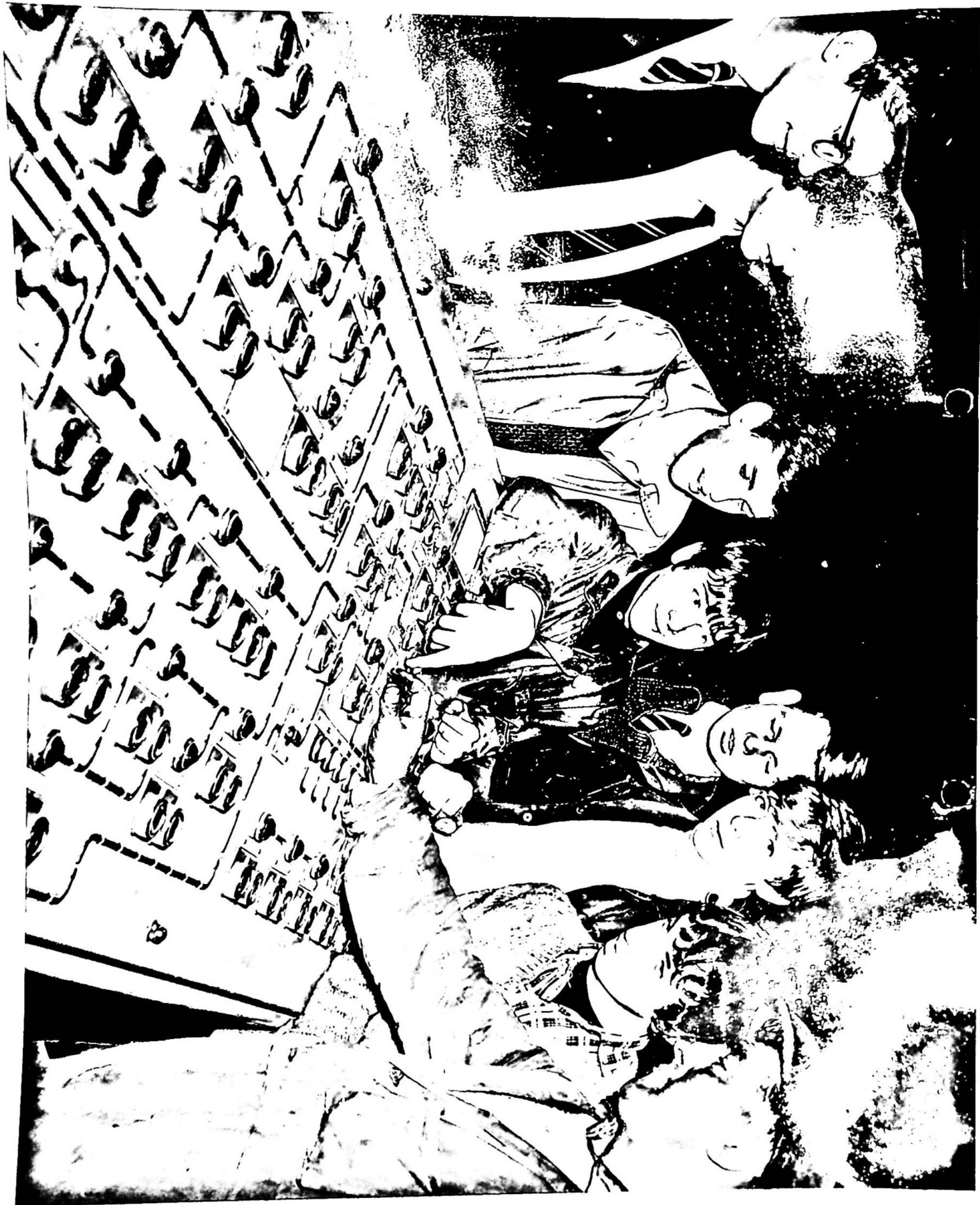
- | | |
|--------------------------------|---|
| 1. Seward | 17 22. Jean Prescott |
| 2. Sawyer | 18 23. A. Baird |
| 3. Thistlethwaite | 19 24. Taylor |
| 4. Gott | 20 U.6.A. |
| 5. Hope | 21 25. Jennifer Dalton |
| 6. Henderson | 22 26. Carol Charnock |
| 7. Rawcliffe | 23 27. Susan Pincock |
| 8. Beales | 24 28. Vivienne Ratledge |
| 9. Oakes | 25 29. Alison King |
| 10. Deans | 26 30. Jennifer Hodgson |
| 11. Iddon | 27 31. Pat Wildman |
| 12. Ryding | 28 32. Patricia Morement |
| 11 13. Moffatt | 29 33. Suzanne Thomson |
| 12 14. Knight | 30 34. Joan McAweney |
| 13 15. Hilton | 31 35. Elizabeth Nightingale |
| 16. Brown | 32 36. Margaret Gormley |
| 17. Hilary Sumner | 33 37. June Holden |
| 14 38. Kathleen Wilkinson | 34 38. Susan Fisher |
| 15 19. Joyce Cocker | 35 39. Elizabeth Damber |
| 20. Vicki Spry | |
| 16 21. Bracewell | |

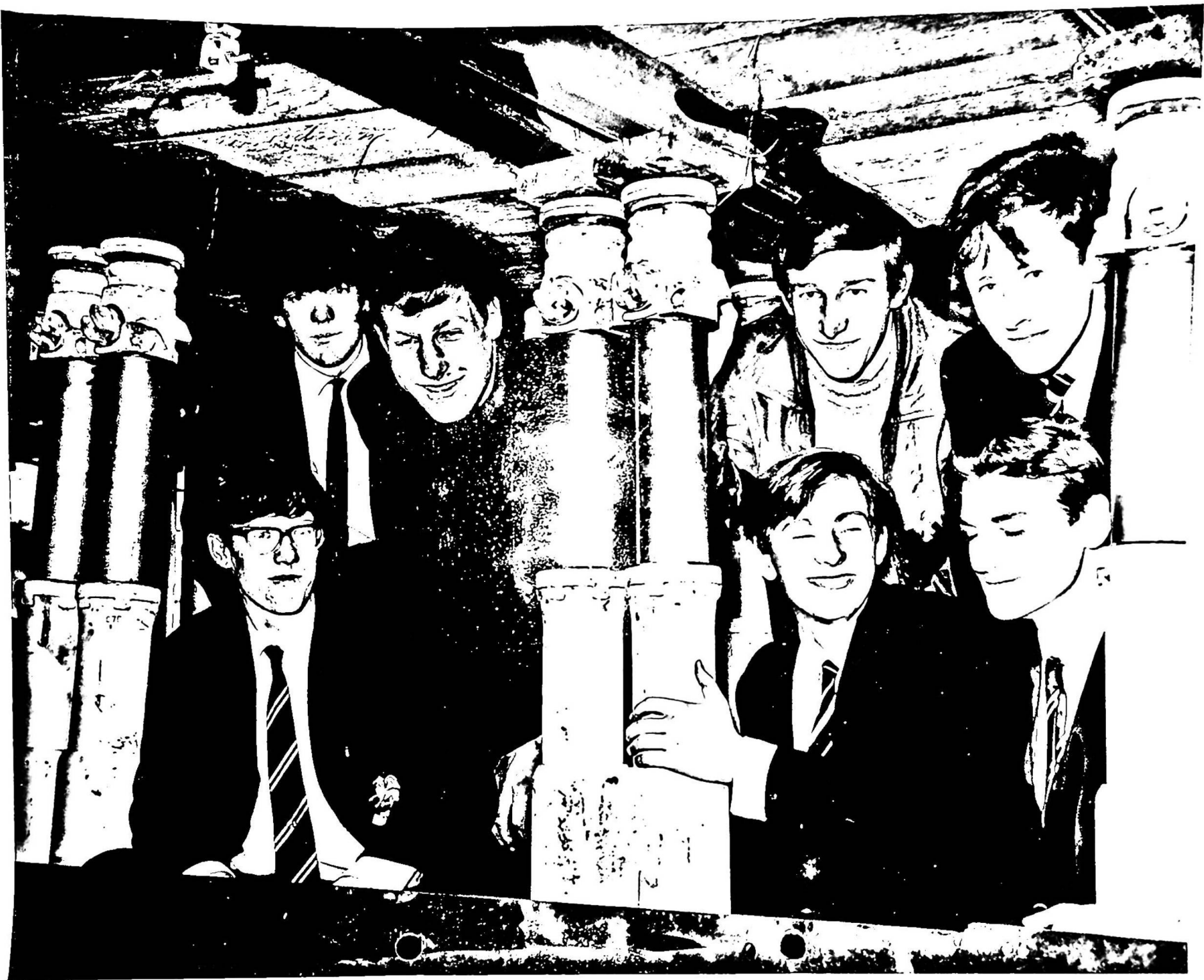
Reserves: Marlene Cleminson
27 41. Joan Penswick
28 42. Audrey Aspinall
L.6.Sc.
~~43. Margaret Morris~~
29 44. Mary Gates

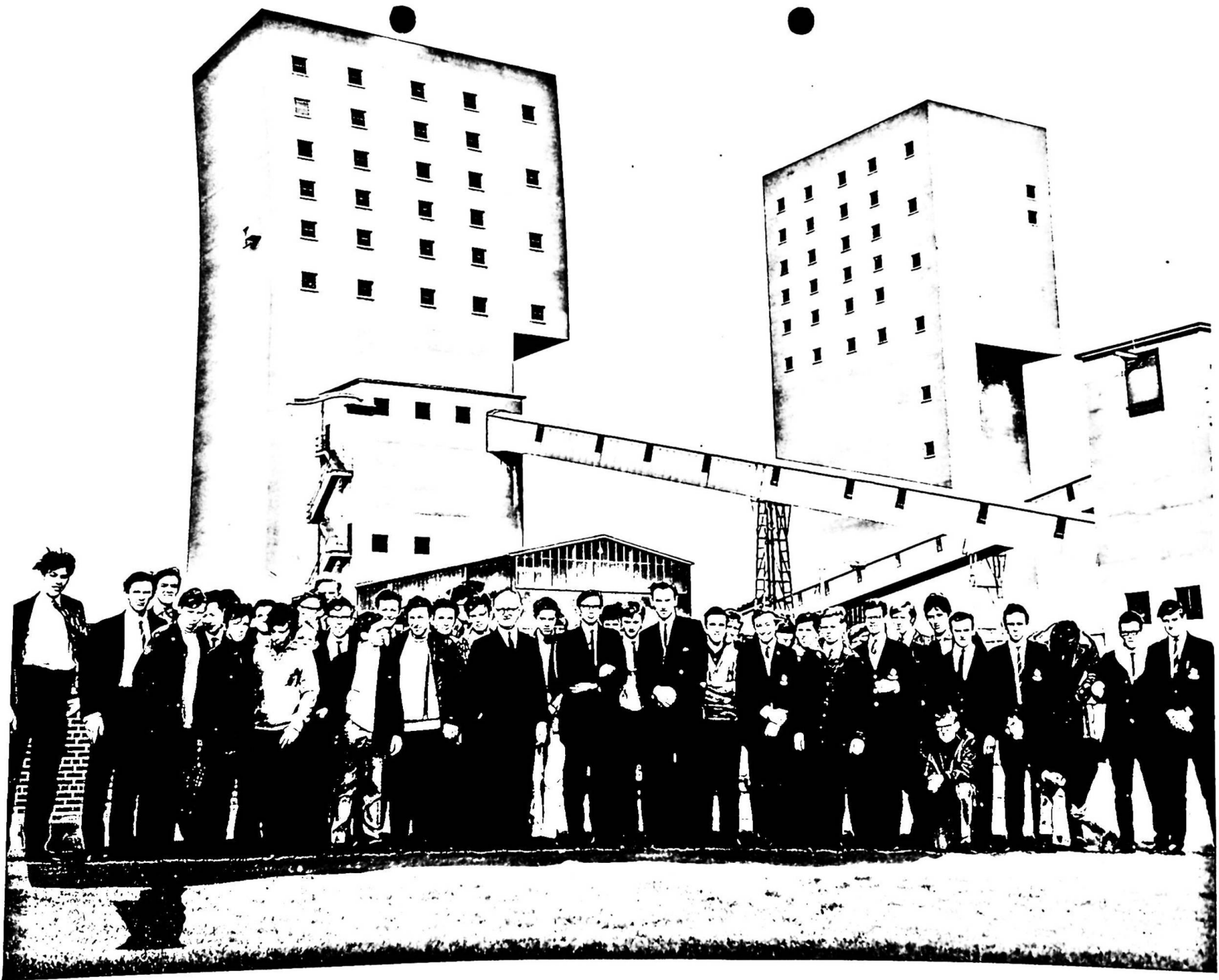
30 Julian Holmes
31 R.D. Forest
32 Skidmore
33 Ashmore
34 Kerfoot
35 Nelson
36 Watson
37 Waring
38 Kikhan
39 Toppi

Reserves
40 J. Davies (Sc)
41 Yvonne Elliott (A)
42 Hodgkinson (Sc)
43 S. Deans (A)
44 Chadderton

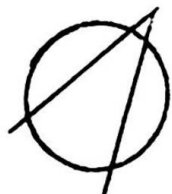
(Reserves will receive preference on next visit to power station.)











We are about to begin the second half of our year's programme and membership cards are now available from form representatives. Subscriptions are also due and these should be paid as soon as possible but in any case not later than 4.00 p.m. on Monday, 16th January. As before, members are reminded that the payment of the subscription is primarily a gesture of support but also that the amount received in this way is vital to our activities. It enables us to plan with confidence and to pay all our expenses promptly and without last minute efforts to raise money. Refreshments continue to take most money whilst hire of films and other expenses are likely to increase as our programme becomes more ambitious. Even film and theatre catalogues cost money and visitors expenses have to be covered. So please co-operate and pay your subscription as quickly as possible (2/6 - the last this year!)

As has already been announced, in view of the shortness of the Spring Term some events have been planned for the beginning of the Summer Term and more are proposed for the post-examination period (details for these cannot be arranged until we know more about the July calendar).

The programme then is now complete and we start promptly with two events in the first week of term.

On Wednesday, 11th January, we have the Ustinov film 'Billy Budd' which has been most strongly recommended by those members who have seen it. Tickets are available from form representatives. We do hope that members will give their support to this and to later films.

On Thursday, 12th January, we have our first visit to Preston observatory and the usual lists are being posted in each room. Names are required by 4.00 p.m. on Tuesday and there will be a short meeting at break on Wednesday (in the Hall) for all those who wish to join the party. We have in fact arranged for two visits - the second (B) will be on Thursday 19th January - since only 20 can visit the observatory at any one time. When you sign your name you will be asked to state which party you are able to join, A or B, if both then please indicate this by adding A and B. Later in the term there will be two visits to a cotton mill on a similar basis. The visit to a gas works requires a light evening and that is why this will take place after Easter.

In addition to three particularly interesting theatre trips we have also introduced, as an experiment and in response to demand, a visit to a concert. Choice was limited but taking everything into account we finally decided on a Saturday concert at the Liverpool Philharmonic. The programme includes items by Wagner, Holst, Bax and Brahms and the conductor will be Sir Adrian Boult. We hope that you will give this venture your support.

It is proposed to continue with dancing lessons, at lunchtime on Fridays and in the Hall. There will be an initial meeting for all those interested (a sort of enrolment) at 1.15 p.m. in the Hall on Friday 13th January.

Two evenings are offered for your active participation - both received considerable support in the questionnaire - another Members' Evening and an event with Chorley Grammar School (debate and games) and for both of these the Society will require your 100% support and enthusiasm.

Again as a result of the questionnaire, the following lectures have been arranged: 'Superstition' by a psychologist (25 Jan) and 'The Solar System' with illustrations (1st Mar).

It is not always easy to maintain contact but do please remember that your participation is earnestly required. Remember too that each member has a right to make suggestions and it is up to each one of you to pass on your queries, problems and suggestions to the Committee via your form representative. You elected him, or her, to speak on your behalf, not to do everything for you.

Mon 9 Jan. Committee 1.00 p.m.
Wed 11 Jan. Observatory visitors 10.45.
.. .. 'Billy Budd' 7.30 p.m.
Th 12 Jan. Observatory visit A. 7.30.
Fr 13 Jan. Dancing enrolment 1.15.

H.E.
7.1.67

The National Coal Board agreed eventually to take two parties each of 20 people plus one member of staff. The 52 people who applied for these places were invited to attend a meeting at break on Thursday, 29th September, and numbers were drawn to select the party. After the meeting ten numbers remained to be drawn. Form representatives announced this fact and it was said that numbers not claimed by 12.30 on Friday, 30th September could be taken by those who had been unlucky in the first draw. Those who achieved their place on the second draw are indicated thus* in the list below.

- Party A to Parkside (Mr. Nidd)

1. Challender L6A

2. Iddon U6S

3. Seward U6S

4. Sutch L6S

5. Bradshaw L6S *

6. Crowe L6A

7. Derrick L6A

8. Foster L6S

9. Ryding U6S *

10. Balmforth L6S

11. Skidmore L6S

12. Jenkins L6A

13. Farrington U6A

14. Mossdrop U6A

15. Taylor U6S

16. Dawes L6S

17. Forrest L6S

18. Chadwick L6A

19. Fraser U6A

20. Baldwin L6S
- Party B to Golborne (Mr. Bulman)

21. Singleton L6S

22. Jones L6S

23. Sawyer U6S

24. Thistlethwaite U6S

25. Salter L6S

26. Herfoot L6S

27. Oakes U6S

28. Kirkham L6A *

29. Lawrie L6A

30. Chadderton L6S *

31. Brown U6S *

32. Nelson L6A

33. Hodgkinson L6S *

34. Ashmole L6S

35. Heald L6A

36. Toppin L6A

37. Wildman U6A

38. Parr U6A

39. Jackson L6S

40. Rimmer L6S
- Reserves :

1. Bradley U6A

2. Rawcliffe U6S

3. Henderson U6S

4. Gott U6S

No other names have been received.

Enquiries Mr. Eccles.

- Notes
1. The visits are to begin at 9.00 a.m. and it will be necessary to leave school at about 8.00 a.m.

2. Travel by private bus to cost 3/- per person.

3. Members of the parties will need to take with them a change of old clothing or overalls, stout footwear, soap and towel.

4. No matches are to be carried.

5. Members of the parties will be required to sign a form of indemnity at the collieries.

6. They will also be required to bring a signed form of consent as below.

.....

Balshaw's Grammar School

Sixth Form Society

I hereby give my consent for my son to join the Society's trip to either Golborne Colliery or Parkside Colliery on Wednesday, 19th October 1966.

Signed

Parent or guardian

Date

FIRST FORM VIEWS
A magazine enquiry.

Your name is not required.

Will you please answer the questions below as fully as possible?
YOU MUST NOT REFER TO MEMBERS OF STAFF IN YOUR ANSWERS.

1. WHAT DO YOU LIKE MOST ABOUT BALSHAW'S?
2. WHAT DO YOU DISLIKE MOST ABOUT BALSHAW'S?
3. HAVE YOU ANY SUGGESTIONS FOR IMPROVEMENTS?
4. WHAT IS YOUR CHIEF IMPRESSION OF MEMBERS OF THE SIXTH FORM?
5. WHICH KIND OF PUNISHMENT DO YOU MOST DISLIKE?
6. WHY DIDN'T YOU WRITE ANYTHING FOR THE LAST EDITION OF THE MAGAZINE?
7. WHAT DID YOU LIKE MOST IN THE LAST MAGAZINE?
8. HAVE YOU ANY CRITICISMS OF THE LAST MAGAZINE?
9. WHAT DO YOU HOPE TO DO WHEN YOU LEAVE SCHOOL?(if you intend to go to university you should write 'university then ' and give what you hope to do afterwards)
10. THE FOLLOWING QUESTIONS ARE INTENDED TO FIND OUT WHAT YOU KNOW ABOUT YOUR SCHOOL AND SHOULD BE ANSWERED WITHOUT REFERENCE TO OTHERS.
 - (A) List the school houses and their colours
 1. colour
 2. colour
 3. colour
 4. colour
 - (B) Now give the names of the four housemasters (any order)
 - 1.
 - 2.
 - 3.
 - 4.
 - (C) Of the following subjects tick those which can be done at Balshaw's.
 - Russian
 - Greek
 - Metalwork
 - Philosophy
 - Engineering drawing
 - (D) What does the school motto mean?
 - (E) How did the school get its name?

Thoughts on the magazine.

A. Purpose. 1. to publicise and record the life of the School.

2. to provide an opportunity for good and worthwhile work, whether literary or otherwise, to be seen by as many as possible.
3. to encourage members of the School to take writing seriously and to give them an opportunity to explore the possibilities of writing and journalism.
4. to serve as a regular and lively channel of communication between all those who have an interest in the School.

B. Policy. 1. to produce a magazine which reflects, interprets and encourages the life of the School.

2. to produce a magazine which will be popular with the School and be read by the majority.

C. Size, content and price.

1. a 50 page magazine published not less than twice a year either in February and September x or in January, June and September.✓
2. price 2/6 per copy.
3. at least 100 subscriptions from former pupils will be necessary.
4. 20 pages of advertising @ 4 gns. per page.
5. convenient size $5\frac{3}{8}$ " by $8\frac{1}{4}$ ".
6. extensive use of visual material.
7. official reports to be limited in length and original presentation to be encouraged.
8. whether divided into separate sections or not the magazine to devote approximately equal space to

- (a)comment - about the School and about the world outside
- (b)original articles of literary merit
- (c)reports
- (d)material for and by former pupils
- (e)Material for and by forms below the Sixth.

D. Organisation and routine of production.

1. Production to be in the hands of the following who will be nominated by the Senior Editor -
 - (i) School Editor
 - (ii) Assistant Editor
 - (iii) Art Editor
 - (iv) Secretary
 - (v) Publicity Secretary
 - (vi) Junior committee responsible for its own section
 - (vii) Business Manager (advertising and subscriptions) -
a member of School Staff.
2. The committee members will meet well in advance, plan the next edition and then take the necessary steps to ensure that material is in on time. All material to be either from a member of the School or from a former pupil.
3. Copy date - five weeks before publication.
4. Galley proofs to
 1. Senior Editor
 2. School Editor
 3. Headmaster - opportunity for censorship!
5. Proofs to be returned to the printer within two days.

E. Next publication - either February 1965 or June 1965 (see C.1.above)

- F. Steps to be taken as soon as possible.
1. form a committee
 2. arouse interest of School
 3. contact possible advertisers
 4. circularise former pupils concerning subscriptions.

K.E.

15.ix.64.

THE SCHOOL MAGAZINE.

As you may know, the next edition of our magazine is due to appear towards the end of next January. We hope that it will be a good one.

Already there has been sufficient response to make it certain that we shall have an interesting magazine. Special reports have been written, an enquiry has been carried out and a new cover has been designed. Most parts of the School will be represented, but as yet we have had few entries from the second and fifth years. The Lower Sixth, too, have proved rather shy!

Unfortunately, no entries can be accepted after 4 p.m. on Tuesday, 15th. of December. However, now that the examinations are over !

We still have room for short stories, on any subject, and letters to the editors would be particularly welcome. The editors look forward to hearing from you, especially from the boys, who up till now have been very much outshone by the girls.

For further information see the main notice boards.

; ;

"No school is an island" or such is our belief. This is our main motive in planning a series designed to find out about what is going on in other schools. Wherever possible we have attempted to 'go and see' for ourselves. When this was not possible, as in the case of Mexborough, we have had an article written by someone on the spot. To all the Headmasters concerned, including our own, we should like to offer our grateful thanks. Without their co-operation this series would have been impossible.

CONTEXT 1

The Public School.

ROSSALL

"NOT SO MUCH A SCHOOL, MORE A WAY OF LIFE"

By J. Toppin and K. Kazer, UVI Arts

Feeling slightly nervous and like trespassers, we walked up the drive and knocked on the door of the Headmaster's house. Our misgivings were partly due to the warning of a knowing tram-driver to "Watch the boys!" However the boys showed outstanding good manners and courtesy—a pleasant change from the usual indifference.

We talked to the Headmaster for about an hour and he answered our questions freely. We learnt that the senior school is comprised of 545 boys and there is also a junior school and a preparatory school of boys and girls. Boys usually enter the school after passing the Common Entrance Examination (at the age of 13) which consists of nine subjects. However some may enter at 11. There are some day-boys, but the number will be reduced. Most of the pupils are the sons of men in the professions and there is particular encouragement for the sons of the clergy, who have a lower fee to pay. The usual fees are £456 per annum. Mr. Sale stressed the fact that he took eleven Local Authority pupils and had offered to take up to 25%. The school is definitely not as exclusive as we had supposed. Most of the boys come from the North. There are also several foreign students, from Asia, America and Malaya. There is no danger of the school dying through lack of pupils in the future, as places are booked for as far ahead as 1977.

In a school as large as Rossall, discipline must be strict, but even so the old harshness has gone. The Housemasters maintain order in the eight houses where all the

boys live. The Headmaster said that house-loyalty is important and sometimes is stronger than school monitors, of course, play a responsible part in the running of the school as they arrange that constructive punishment is meted out when necessary. The Headmaster said that bullying was not done.

"BALSHAVIAN" HAS CHANGED ITS APPEARANCE

Produced entirely by the pupils

8—Leyland Guardian, February 19, 1963

THE PUBLICATION of the current "Balshavian"—the magazine of Balshaw's Grammar School, Leyland—marks a completely new departure from tradition.

The change is both in content and appearance. The old "Balshavian," quarto-sized and bearing the school crest on its decoriously white cover, was chiefly devoted to a record of the school's achievements in the course of each year. Within appeared the rows of schoolgirl heroines with their hockey sticks, the knobbly kneed rugger champions and the dramatic society captured at a suitable climax during a production of the school play.

In the new magazine this has all disappeared. None of the boys and girls photographed need fear to send this "Balshavian" across the seas to a distant pen friend. And the 11-plus success depicted on the pale orange cover wears both a halo and an engaging smile. The new "Balshavian" is small, compact, friendly—and humorous. More important, it gives a much wider picture of the individual interests and enthusiasms of the children who make up the school.

Three issues

The way in which the magazine has been produced is, again, something entirely new, in that it has been left entirely to the pupils without, as someone said, "the headmaster breathing over their shoulders." Two committees, one representing the seniors and one the juniors, have been responsible for compiling the material. The intention is for three issues to be published each year.

Many of the contributors have taken a cue from contemporary journalism, with personal interviews, opinion surveys and cartoon illustrations.

Comforting

Mary Houghton has contributed an excellent interview with the head boy and girl. In her concluding paragraph she says: "If we have managed to make (them) seem more real, then we have achieved our original purpose." Certainly comforting to the spirit of those in the junior ranks!

Sandra Bleasdale has reported a Press conference with the headmaster, who has given much useful information about the school and prospects of extending its facilities.

Then there is the good-humoured, if controversial, survey called "Balshavians in Focus." This was carried out by the magazine committee and reported on by Jackie Beattie. The result? A rather complex mass of information, too superficial in scope to be convincing, but tending to demonstrate

that, whatever his aspirations in life, the Balshaw "bulldog" is no longer a square.

Readership

Away from the spectacular, however, there are some excellent articles with an appeal to a potential readership ranging from first formers to members of the Old Students' and Parents' Associations.

Old Balshavian, Margaret Freeman, gives a breath-taking account of her new life as a teacher and welfare worker in North Borneo. In the Junior section, Margaret Hoyle and



Mary Houghton have fulfilled the ambitions of generations of Balshavians in having been allowed to report on an expedition to a famous local garden.

There are poetry contributions and interesting accounts of the charitable work which has been undertaken by many of the pupils.

But whether the subject is serious, topical, or even desperate, the natural gaiety of youth bubbles through. On page 23, Audrey Crabtree has decided to tackle the problem of shortage of classrooms. She writes: "Perhaps it was alarm at the continued and unscrupulous search for extra classroom space that caused the Ribble Bus Company to end the S12 Service at 4 o'clock lest that vehicle too should be taken over for uses other than transport."

Lunch poem

And, on page 40, Dorothy Browne and Kathleen Kazer in their endearing poem: "Balshaw's makes the heart grow fonder":

"How oft we sit and savour daily lunch

As caterpillars, string and stones we crunch;

Some teachers too share this unhappy fate

And joke about the relics on the plate . . ."

Certainly, the new "Balshavian" should warm young hearts of every age.

M.J.H.

(Cartoons by Sandra Bleasdale, reproduced by kind permission of the headmaster).



Balshavians

in focus

EVERY pupil at Balshaw's Grammar School, Leyland, played a part in the production of the school's latest magazine.

Members of the magazine committee conducted a survey—"Balshavians in Focus"—in which pupils were asked a variety of questions.

Commenting on the results of the inquiry the committee says: "From this survey emerges the great diversity of aims, backgrounds, likes, dislikes and ideals. Individuality there is in plenty, but whether this can be equated with originality is a different question which perhaps our readers would like to consider."

The magazine is full of probing features and includes articles on a public school, a comprehensive school and a sixth form college.

The head boy and the head girl are featured in an interview and the headmaster is put under the spotlight in a "Press Conference" question and answer article in which he is asked questions on many aspects of school life.

On the lighter side is a poem entitled "Balshaw's makes the heart grow fonder."

* * *

RAISHAW'S GRAMMAR SCHOOL,
LEYLAND,
PRESTON,
LANCS..

Information for advertisers in the School Magazine.

Name of magazine : The Balshavian.

Publication dates : January, May and September.

Copy dates for advertisers : 1st. December, 1st. April, 1st. July.

Circulation : 750 - 850 (600 of these to boys and girls at the School)

Type area : $6\frac{1}{2} \times 4$

Screen : 100

Rates : full page - 4 guineas per issue
half page - 2 guineas per issue.

Printers : Chorley Guardian, 32a Market Street, Chorley, Lancs..

Business Manager : Mr. B. Holmes.

Additional information :

1. Normally orders will be accepted only if space is reserved in three successive editions of the magazine and orders will be renewable annually.
2. Our own Art Department is prepared to assist advertisers in planning the layout of their advertisements. Although no charge will be made for this service, if advertisers wish to have a photograph or illustration included then it may be necessary to make an initial charge of about £1 to cover the cost of block-making. The basic charge for insertion will, of course, remain unaltered.
3. It would be of considerable assistance if prospective advertisers would kindly indicate their requirements on the form below which should be detached and returned to the Business Manager at the School.

.....
To the Business Manager, The Balshavian.

Please reserve ^{one full page} ~~one half page~~ in the next three editions of The Balshavian
and please insert the following advertisement.
(+ delete as necessary)

Account to be sent to (BLOCK CAPITALS)

Please tick here if you wish to inspect proofs

Signed Date.....



The Balshavian

MAGAZINE ADVERTISING ACCOUNT

Balshaw's Grammar School, Church Road, Leyland

.....19.....

£ s. d.

--	--	--

Cheques payable to:

TO ALL OLD BALSHAVIANS AND TO ANYONE WITH AN INTEREST IN
BALSHAW'S GRAMMAR SCHOOL.

The Editors of The Balshavian wish to announce that publication of the magazine will be resumed in January 1965 and that it will henceforth appear regularly in January, May and September.

It is hoped that former pupils and others with an interest in the School will give the magazine their support in any of the following ways -

- (i) by subscribing to the magazine
- (ii) by supplying the Editors with news
- (iii) by volunteering to write articles and letters
- or (iv) by taking advertising space.

Articles and letters are particularly welcome from those in unusual and interesting careers and from people at college or university. The Editors would be glad to answer any enquiries.

Old Balshavians should continue to pay their subscriptions in the usual way and at the usual rates to the Honorary Treasurer, Old Balshavian Association, 10 Worcester Avenue, Leyland. Subscriptions already paid to cover a year's supply of magazines will be honoured.

To others subscriptions are available at the following rates -

- one year (three editions) @ 7/6
- two years (six editions) @15/-
- three years (nine editions) @22/6
- four years (twelve editions) @25/-

Intending subscribers are asked to complete and detach the form below and to return it together with their remittance to Mr. J. Leathley at the School.

Prospective advertisers should address their enquiries to Mr. B. Holmes.

Name (block capitals please)

Address

I wish to order the Balshavian (please tick the appropriate space)
for one year @ 7/6

for two years @ 15/-

for three years @ 22/6

for four years @ 25/-

Enclosed please find cheque/P.O. value

Signed Date

MAGAZINE ENQUIRY

Please answer the following questions in the spaces provided.

Your name is not required but please will you give (a) your form
(b) your age
(c) your sex

- 1. What is your father's occupation?
If he is employed by Leyland Motors please tick here
- . What is your mother's occupation?
- . Are either of your parents former pupils of Balshaw's?
- 4. How much spending money do you receive each week?
Do you do a job out of school?
If so, what kind of job?
Would you like to say how much you earn each week?
. What job do you hope to do when you leave school?.....
- . Which newspaper(s) do you normally read? 1.....
2.....
3.....
- 8. Which magazines, if any, have you bought within the past month?
1.....
2.....
3.....
- 9. Do you smoke?
- 10.Which game or sport do you prefer (a)in winter
(b)in summer
- 11.What are your hobbies?
.....
.....
- 12.Which television programme do you prefer?
- 13.Which radio programme do you prefer?
- 14.How often have you been to the cinema during the past month?
If you have been to the cinema which
film did you enjoy most?
- 15.How many books have you read during the past four weeks
(other than in school)?
- 16. Which kind of book do you prefer to read?

Thank you for your co-operation.The results of this enquiry will appear
in the January edition of the Magazine.

HEADMISTRESS:
MISS M. SHANKS, B.A.

TELEPHONE: PRESTON 4145.

The Park School,
Moor Park Avenue,
Preston.

Dear Editor,

I would like to acknowledge the receipt of your magazine "The Balshavians" and to let you know how impressed we (the members of the magazine committee) were. We unanimously decided that it was far the best school magazine we have seen.

Yours sincerely

Sally Coulthurst
(Editor)

Magazine Newsletter No.3

Material for the May Edition is now with the printers and galley proofs have already been received.

We hope to publish the magazine on Friday, 28th May but clearly whether we can do so or not now depends entirely on the printers.

PLEASE
READ

Our next task will be to pay the bill for printing and this can only be done if every member of the School buys a copy. As before the cost will be 2/6 and we rely on everyone to bring their money on or before Tuesday, 25th May. Since this involves extra work for form teachers we hope that everyone will co-operate in every way. Remember that all members of the School are expected to buy a magazine unless they have an older brother or sister in the School.

Contents include a special article on the world and standards of pop music magazines, a review of The Pirates of Penzance, a report on a special school, an interview with the Youth Employment Officer and many other articles.

Here are some quotations from the magazine-

● "Is it parental attitudes which are to blame?"

• "The recent public offer of shares in the Beatles and the emergence of John Lennon as a company director are only the latest reminder of the profits to be picked up out of 'pop'."

+ "Shackling was very popular last term."

... + "At all costs avoid lengthy arguments with your landlady."

PLANS are now being made for the September Edition and the Editors will be pleased to welcome anyone willing to help.

→ The last day for copy is Friday 9th July. ALL material must be in well before this date in order to allow time for correction and re-writing.

● 5 & £15

These are the prizes offered by the National Association of School Magazines for good work for magazines. Their competition is divided into two sections, one for short stories and another for cover design.

The School Magazine which submits the best short story will win £20 of which £5 will be for the writer and £15 to encourage further writing within the school. The best cover design will also win £15.

In order to select our entry we propose to hold our own competition with a one guinea prize for the winning story which will then go forward to the national competition. Cover designs will also be submitted although no separate prize will be awarded by The Balshavian. More details in our next newsletter.

LANCASHIRE EDUCATION COMMITTEE



CHORLEY ASTLEY PARK SCHOOL,
HARRINGTON ROAD,
CHORLEY.

E. R. JONES,
Headmaster.

Telephone : Chorley 2227.

15th June, 1965

Dear Mr. Eccles,

Thank you for sending me "The
Balshavian" containing the article on
our school.

I took the opportunity of bringing
it to the notice of the School Managers
at their meeting yesterday, and they
join with my staff and me in congratulating
your girls on the high standard of
reporting and the sympathetic insight
they reveal.

I would also like to express again
my appreciation of your co-operation.

Yours sincerely,

Headmaster.

H. Eccles Esq.,
Balshaw's Grammar School,
Leyland.

Magazine Newsletter No. 4.

We hope to find out which in your opinion is the best article in the May edition.

HIT
HIT
HIT
HIT

We do not wish to know which amuses you most.

We do want to know which you find the most interesting and which, taking the writer's age into account, is the most well written.

During the next few days at least three members of each form will be asked to list, in order of merit, the best five articles in the May edition.

The results will be published in our next newsletter.

Short story competition : All entries to be received before 9th July.
Enquiries at once to Mr. Eccles.

Last day for copy.

Why it is important to have articles in before the last day for copy?

1. We are committed to publishing our magazine within the first three weeks of each term.
 2. It takes from five to seven weeks to get the magazine printed.
 3. The magazine must be ready to take to the printer's on the last day of term.
 4. Nearly all articles need correcting and re-writing or typing and experience shows that this usually takes at least a week.
 5. It is difficult and often impossible for the Editors to make contact with writers during the holidays.
 6. Therefore, it is out of the question to have the last day of term as the last day for copy.
 7. That is why we have chosen the 9th July as our last day for copy, a week before we break up.
 8. If articles are late this leads to
 - (i) extra work during the holidays
 - (ii) extra expense as a result of hasty last minute corrections which cause extra difficulties at the printer's.
 - (iii) delays in publication
- AND THIS IS WHY THE MAY EDITION IS LATE!

● JULY

9



Saturday's Games

School teams had another successful day on Saturday, 9th October with the following results -

<u>Rugby</u>	1st XV	v. Kirkham	: School 19,	Kirkham 6	- won
	2nd XV	v. Kirkham	: cancelled		
	U/15	v. Kirkham	H: School 16,	Kirkham 3	- won
	U/13	v. Kirkham	A: School 12,	Kirkham 27	- lost
<u>Hockey</u>	1st XI	v. Arnold	A: School 0,	Arnold 0	- drawn
	2nd XI	v. Arnold	A: School 1,	Arnold 1	- drawn
	U/15	v. Arnold	A: School 1,	Arnold 1	- drawn

Diary Notes for the week beginning Monday, 11th October

Mon. 11 Oct. Guerden House Meeting for ALL House members at 1.20 p.m. in Room 10. Agenda - House Party October, 29th.

S.C.M. Speakers : Miss Price and Miss Tod from The Josephine Butler House, Liverpool (Training Centre for Moral Welfare Officers).

The meeting will begin at 4 p.m. in Room 13

Rugby Leagues Cl.v.F. and Cu. v. W. at 4p.m.

Hockey Lunch time - Junior Turn Out

After school - 1st. & 2nd XI

Tues. 12 Oct Magazine - Junior Committee at 1.20 p.m. in Room 7

Music Junior Violin class in Music Room at 1 p.m.

"Messiah" rehearsal in Hall also at 1 p.m.

Clarinet classes as arranged

Rugby 1st, U/15 & U/13 at 4 p.m.

Hockey House leagues at 4 p.m.

Wed. 13 Oct Twelfth Night. Afternoon visit to Library Theatre, Manchester. Mainly 4/6 (with Mr. Holmes)

Music Speech Day choir in Hall at 1 p.m.

Brass instrument lessons in Music Room at 1 p.m.

Rugby 2nd & U/15 at 4 p.m.

Hockey 1st & 2nd turn-out

Sixth Form Visit to Under Milkwood at the Everyman Theatre Liverpool. To leave school at 6 p.m.

Thurs. 14 Oct Music Recorder group in Music Room at 1 p.m.

Film 'Gateway to Adventure' in Junior Physics Lab. 1.20. Colour film set on South American cattle ranch. Prompt start.

Rugby 1st & U/13 at 4 p.m.

Hockey Knock Outs : Cl. v. W.

Fri. 15 Oct Newsletter Information due by 1 p.m.

Music "Messiah" rehearsal in Hall at 1 p.m.

Senior violin class in Music Room at 1 p.m.

Half-term holiday begins at 4 p.m. Return to school Monday, 25th October.

Sat. 16 Oct Rugby 1st XV v. Sedburgh (H) at 2.30 p.m.

Duty Masters : Mr. Bull, Mr. Holmes

Prefects : M. Walsh, Smith

Sub-prefects : M. Waddecar, Settleberry

The Balshavian Newsletter No.7

News and views from the week beginning October 11th.

All went according to schedule. The visit to 'Twelfth Night' was greatly appreciated but some questioned whether Shakespeare would have approved of the Edwardian costume. The Everyman production of 'Under Milkwood' is also warmly recommended

Save the Children Fund - the amount collected so far this term is £9. 12. 9. The Oxfam total is £3. 4. 5½.

The result of the First XV's game against Sedbergh -
School 35, Sedbergh nil.

Diary Notes for the week beginning Monday, 25th October

Mon. 25 Oct. Sixth Form Society Committee in room 7 at 1.20 p.m.

Hockey Junior Turn-out at 1.10 p.m.

1st. and 2nd turn-out at 4 p.m.

Rugby 1st., 2nd. & U/15 turn-out at 4 p.m.

Tues. 26 Oct. Magazine Junior Committee at 1.20 in room 7

Music Choir practice for Messiah in Hall at 1.0 p.m.

Junior Violin Class in Music Room at 1.0 p.m.

Clarinet classes as arranged.

French Film - 'On ne badine pas avec l'amour' in Hall
at 4 p.m. (See separate notice)

Hockey House Leagues at 4 p.m.

Rugby U/13 turn-out at 4 p.m.

Wed. 27 Oct. Magazine Senior Committee in room 7 at 1.20 p.m.

Music Speech Day choir practice in Hall at 1.0 p.m.

Brass instrument lessons in Music Room at 1.0 p.m.

Farington House meeting for members at 1.30 in room 2

Hockey House knock outs Cl. v W. at 4 p.m.

Rugby 1st XV v Stonyhurst (Home)

2nd XV v Stonyhurst (Away)

Thurs 28 Oct Film Aquerela do Brasil - the Brazilian Embassy regrets
that it is unable to send us this film and therefore
today's performance has been cancelled.

Gym Second form society at 1.15 p.m.

Music Recorder group in Music Room at 1.0 p.m.

Hockey Junior turn-out at 4 p.m.

Rugby U/15 & U/13 turn-out at 4 p.m.

Friday 29 Oct. Films in Junior Physics Lab. at 1.0 p.m.

Careers film - R.A.F. Flying Training Command

Science film - Story in the Rocks (showing how
we find evidence of animals and plants
of millions of years ago from studying
fossils)

Music Choir practice for Messiah in Hall at 1.0 p.m.

Senior violin class in Music Room at 1.0 p.m.

Newsletter All information for Newsletter No. 8 to
be with the compiler before 1.0 p.m. Compiler

of Newsletter No.8 Barbara Antoine L.6. Arts

Cuerden House Party at 6 p.m. (Tickets 2/-)

Sat. 30 Oct Hockey 1st., 2nd. & U/15 v. Wigan High School (Home)
Rugby U/15 & U/13 v. Ribblesdale (U/15 home, U/13 away)

Duty Staff : Miss Bromley, Mr. Bulman
Prefects : S. Walsh, Carlisle M.J.
Sub-prefects : J. Topping, Calder I.

Balshavian Newsletter No. 8

Compiled by Barbara Antoine.

News and Views

During the half-term holiday a number of people from the Sixth attended the Blackburn Diocesan Youth Conference for Prospective Teachers at Whalley Abbey, an enjoyable experience even though the abbey grounds were supposedly haunted!

The Tuesday Film, *On ne badine pas avec l'amour*, was well attended but, although programme notes were provided to explain the plot and to give difficult vocabulary, the absence of sub-titles proved too much for many and we are glad to hear that in future all foreign films will have sub-titles.

GAMES: hockey knock-out - Worden 12, Clayton 0.
rugby First XV v. Stonyhurst - School 43, Stonyhurst 6
Second XV v. Stonyhurst - Stonyhurst 18, School 0.
U/15 v. Ribblesdale Hall - School 18, Ribblesdale 5.
U/13 v. Ribblesdale Hall - Ribblesdale 12, School 6.
hockey leagues : Clayton 3, Gunderen 3
Farington 1, Worden 0.
(hockey v. Wigan - cancelled)

Diary Notes for the week 1st Nov. to 5th Nov.

Mon. 1st Nov. Chess Society in room 9 at the usual time.

1st XV turn-out at 4 p.m.

Hockey junior turn-out at 1.15 p.m.

1st & 2nd at 4.10 p.m.

Tues. 2nd Nov Music junior violin class at 12.50 in Music Room
woodwind instrument lesson at 12.50 in Hall
Messiah rehearsal in Hall at 1 p.m.

Rugby 1st, 2nd and U/15 turn-out at 4 p.m.

Wed. 3rd Nov Music brass instrument lesson in Senior Masters Room 1p.
Speech Day choir in Hall at 1 p.m.

Rugby 1st. XV turn-out at 4 p.m.

Hockey 1st & 2nd at 1.15 p.m.

Thur 4th Nov Gym Society for second form at 1.15 p.m.

Rugby 2nd, U/15 & U/13 at 4 p.m.

Music recorder group in Music Room at 1 p.m.

Fri 5th Nov Science film: Raw Materials and Refining (17 mins)
in Junior Physics Lab at 1.20 p.m.

Music senior violin class in Music Room at 12.50 p.m.
Messiah rehearsal in Hall at 1 p.m.

Newsletter No. 9 : all information to be with compiler
before 1 p.m. Compiler of Newsletter No. 9 -
Farrington of Lower Sixth Arts.

Sat 6th Nov Hockey 1st, 2nd, U/15 & U/14 v. Chorley G.S.

Rugby 1st, 2nd, U/15 & U/13 v. King Edward VII Lytham.

Sun 7th Nov Mountaineering Society trip to Lake District.

Duty: Staff Mr. Hilditch, Mr. Wilkinson

Prefects : J. Lake, Brown, T.

Sub-prefects : M. Fleming, Singleton.

COMPETITION : the magazine is organising a short story competition, open to all members of the School, with a prize of one guinea. The closing date for entries is 30th November.

Advance notice of meeting : Sixth Form Society Lecture - What is
a philosophical problem? 7.30 p.m.
Monday, 8th November.

Balshavian Newsletter No. 9

Compiled by Farrington L.VI.A.

News and Views

Despite the re-opening of the Chess Society and at least one stretcher-bearing dash across the rugby field there was little last week to relieve or interfere with the passing of yet another 15,000 pupil-hours.

Games : Rugby	1st XV	33,	King Edward VII Lytham	3
	2nd XV	0,	King Edward VII Lytham	26
	U/15	0,	King Edward VII Lytham	14
	U/13	6,	King Edward VII Lytham	11
Hockey	1st XI	3,	Chorley	0
	2nd XI	3,	Chorley	0
	U/15	4,	Chorley	2
	U/13	4,	Chorley	2

Diary Notes for the week beginning 8th November

Mon 8 Nov. Magazine Junior Committee at 1.20 p. m. in room 7.

Mockey Junior Practice at 1.10 p.m.

1st & 2nd turn-out at 4.10 p.m.

Rugby 1st XV turn-out at 4 p.m.

Sixth Form Society 'What is a philosophical problem?' by Professor Lloyd of Liverpool University at 7.30 p.m.

Tues 9 Nov Music Clainet class in Hall at 12.30 p.m.

Messiah practice in Hall at 1.0 p.m.

Junior violin class in Music Room at 1.0 p.m.

Rugby 1st, 2nd and U/15 turn-outs at 4 p.m.

Wed 10 Nov. Music Brass instrument class in Music Room at 1.0 p.m.

Speech Day choir in Hall at 1.0 p.m.

Hockey 1st and 2nd turn-out at 1.10 p.m.

Rugby 1st XV v. Kirkham (away) at 2.30 p.m.

S.C.M. trip to Manchester to see "The Greatest Story Ever Told"-leaving at 5.45 p.m. (price 7/-)

Thur 11 Nov. French film : Le Mistral at 1.0 p.m. in Junior Physics Lab

Music Recorder group in Music Room at 1.0 p.m.

Gym societies : second form at 1.15 p.m. (girls)
middle school at 4.0 p.m. (girls)

Rugby 2nd, U/15 and U/13 turn-outs at 4 p.m.

Fri 12 Nov Music Messiah practice in Hall at 1.0 p.m.

Senior violin class in Music Room at 12.50 p.m.

Science film : The Twilight Forest (showing how the resources of the African forests can be developed on an industrial scale) in Junior Physics Lab at 1.20

Careers film : Royal Air Force Training Command JPL at 1.0 p.m.

Hamlet at the Sheffield Playhouse : sixth form party leaves school at 4.0 p.m.

Gym society : first form girls at 1.15 p.m.

Sat 13 Nov Rugby v. Hutton (1st and U/15 away,

2nd and U/13 at home) ALL to begin at 2.30

Hockey v. Blackpool Collegiate (1st, 2nd, U/15 all away)

Duty staff: Miss Smith, Mr Downer
prefects: K. Kazer, Park, S.C.
sub-prefects : S. Dewhurst, Ward

Advance notices On Tuesday 16th November members of the Sixth Form will visit the Little Theatre Southport to see "Richard II" and on Monday 15th November a select group of francophiles plus one will attend a performance of "Les Femmes Savantes" at Penwortham Girls Grammar School. (Both visits will take place in the evening)

NEWSLETTER NO. 10 WILL BE COMPILED BY KATHLEEN GLOVER L.VI.ARTS - all information to be with her before 1.0 p.m. on Friday, 12th. November.

News and Views

Games : Rugby 1st XV 26, Kirkham 8 (away) - 10 Nov.
1st XV 12, Hutton 0 (away)
2nd XV 3, Hutton 40 (home)
U/15 5, Hutton 16 (away)
U/13 3, Hutton 11 (home)
Hockey 1st XI 1, Blackpool Collegiate 2 (away)
2nd XI 2, Blackpool Collegiate 1 (away)
U/15 0, Blackpool Collegiate 0 (away)

The S.C.M. visit to Manchester to see 'The Greatest Story Ever Told' gave widespread satisfaction and was generally voted an experience not to be missed.

Last Sunday the brave souls of the Mountaineering Group went hiking in Langdale Valley where they encountered low clouds, torrential rain and howling gusts of wind. And now they tell us that they enjoyed it!

Diary Notes for the week beginning 15th of November

Mon 15 Nov Hockey : Junior practice at 1.10 p.m.
Magazine : Senior Committee in room 7 at 1.20 prompt.
Biology : library open every Monday at 1.20 in Biology Lab.
Les Femmes Savantes : at Penwortham Girls' Grammar School at 7.15 p.m.

Tues 16 Nov Music : clarinet class in Hall at 12.30 p.m.
Messiah practice in Hall at 1.0 p.m.
Junior violin class in Music Room at 1.0 p.m.
Gym : 1st form society at 1.15 p.m.
Rugby : 1st XV & U/15 turn out at 4 p.m.
Richard II : at the Little Theatre, Southport - party to leave school at 6.15 p.m.

Wed 17 Nov Music : brass instrument class in Music Room at 1.0 p.m.
Speech Day choir in Hall at 1.0 p.m.
Hockey : 1st and 2nd turn out at 1.10 p.m.
Modern Dancing : in Hall at 4.0 p.m. - an introductory meeting. Inquiries to Fraulein Wolff.

Thu 18 Nov Music : recorder group in Music Room at 1.0 p.m.
Gym : 2nd form society at 1.15 p.m.
Seniors at 4.10 p.m.
South American Film : Transatlantic Background at 1.20 in JFL - in English.
Rugby : 1st, 2nd, U/15 & U/13 turn outs at 4 p.m.

Fri 19 Nov Music : Messiah practice in Hall at 1.0 p.m.
Senior Violin class in Music Room at 12.50 p.m.
Science Film : Essential Rays (the discovery and uses of X-rays) in JFL at 1.15 p.m.
Farington House Party : 6.30 to 10 p.m. - Juniors who wish to stay late are asked to bring notes from their parents (see main notice board). Tickets 2/6.
Swimming Gala : Heats at Chorley Baths at 7.15 p.m.

Sat 20 Nov Hockey v. Ashton-in-Makerfield (1st, 2nd, U/15 & U/14 ALL at home)
Rugby v. Preston G.S. (1st & U/15 away, 2nd & U/13 at home start at 10.30 a.m.)

Duty Staff - Mrs. Maxwell, Mr. Gorton
Prefects : M. Butler, Forrest
Sub-prefects : S. Carter, Bentham.

NEWSLETTER NO. 11 WILL BE COMPILED BY MARGARET GORMLEY L.VI.A. - all information to be with her before 1.0 p.m. on Friday, 19th November.

News and Views

Games : school teams had another good day on Saturday and we are particularly pleased to be able to report that the First XV's unbeaten record is still intact.

Rugby : 1st. 13 , Preston 11 (away)
2nd. 3 , Preston 8 (at home)
U/15 10 , Preston 12 (away)
U/13 6 , Preston 3 (at home)

Hockey: 1st. 2 , Ashton-in-Makerfield 1 (home)
2nd. 1 , Ashton-in-Makerfield 0 (home)
U/15 4 , Ashton-in-Makerfield 2 (home)
U/14 5 , Ashton-in-Makerfield 0 (home)

Predictions of grim death on the moors proved quite false and members of the Upper Sixth who went to see a performance of 'Hamlet' at Sheffield Playhouse returned safely to report a successful trip. The performance of Les Femmes Savantes at Penwortham was dutifully attended by a number of Fifth and Sixth form enthusiasts. Richard III at Southport proved to be highly amusing and was immensely enjoyed by all. Perhaps a better title might have been 'The Comedy of Errors' !

It has been noticed with dismay that Mr. Wilkinson has once more closed the Chess Society . Any other excuses for staying in at lunch-time will be gratefully received.

Diary Notes for the week beginning 22nd November

Mon 22 Nov Hockey: junior practice at 1.10 p.m.
Magazine: junior committee in Room 7 at 1.20 p.m.

Tues 23 Nov Music: clarinet class in Hall at 12.30 p.m.
Messiah practice in Hall at 1.0 p.m.
Magazine: senior committee in Room 7 at 1.20 p.m.
Gym: first form society at 1.15 p.m.
Music: junior violin class in Music Room at 1.0 p.m.
Rugby: 1st, 2nd and U/15 turn outs.

Wed 24 Nov Music: brass instrument class in Music Room at 1.0 p.m.
Speech Day choir in Hall at 1.0 p.m.
Gym: second form society at 1.15 p.m.
Modern Dancing: in the Gym at 4.0 p.m.
Swimming: gala finals at Chorley Baths at 7.15 p.m.

Thurs 25 Nov Music: recorder group in Music Room at 1.0 p.m.
Gym: society for 3rds upwards at 4.10 p.m.
Hockey: 1st and 2nd at 1.10 p.m.
Rugby: 1st, 2nd, U/15 and U/13 turn outs at 4.0 p.m.

Fri 26 Nov Music: Messiah practice in Hall at 1.0 p.m.
Senior violin class in Music Room at 12.50 p.m.

Sat 27 Nov Hockey: 1st, 2nd, U/15 at Ormskirk Grammar School
Rugby: v. Blackpool (1st and U/15 at home
2nd and U/13 away all at 10.30 a.m.)

Duty staff : Mr. Leathley, Miss. Wallbank
prefects : S. Bleasdale, Hunter P.
sub-prefects : P. King, Almond.

Newsletter No.12 will be compiled by Linda Kidd L.VI.A. and all information should be with her before 1.0 p.m. on Friday 26th November.

STOP PRESS : Careers film - Nuclear Research - Friday 26 November
at 1.0 p.m. in JPL.

News and Views

Bad weather and the prospect of school examinations have brought activities to a standstill with the notable exception of singers and musicians who seem to carry on regardless.

All Saturday's games were cancelled and consequently there are no results to announce. Gym societies, however, go from strength to strength and the pursuit of the "body beautiful" continues unabated. What other explanation can there be for the Wednesday evening sight of girls parading into the gym with books precariously balanced on their heads?

The Editors of the Magazine, too, continue their efforts. Unexpected encouragement came last week when we heard that an earlier edition had been placed twenty second (and warmly recommended) out of some three hundred school magazines in a competition organised by the British Council. Our position would have been higher if the quality of work in the Contributed Section had been slightly better. As this is the section which relies entirely on the support of the school at large the Editors hope that everyone will take this to heart.

In response to requests the Short Story Competition will now remain open until Monday 13th December, and it is hoped that once exams are over there will be a sincere effort to make the competition a success.

Diary Notes for the week beginning 29th November

Mon 29 Nov Hockey: junior practice at 1.10 p.m.

Tue 30 Nov Music: clarinet class in Hall at 12.30 p.m.
Messiah practice in Hall at 1.0 p.m.
junior violin class in Music Room at 1.0 p.m.
Hockey: 1st and 2nd practice at 1.10 p.m.
Gym: first form society at 1.15 p.m.

Wed 1 Dec School Examinations - first day.
Music: brass instrument class in Music Room at 1.0 p.m.
Speech Day choir in Hall at 1.0 p.m.

Thu 2 Dec School Examinations - second day
Music: recorder group in Music Room at 1.0 pm.

Fri 3 Dec School Examinations - last day.
Music: senior violin class in Music Room at 1.0 pm.
Messiah practice in Hall at 1.0 p.m.

Sat 4 Dec Hockey: 1st, 2nd & U/15 matches at Arnold School, Bispham.
Rugby: 1st & U/15 v. Morecambe G.S. away,
2nd & U/13 v. Morecambe G.S. home (all at 10.30 a.m.)

Duty staff - Mr. Eccles, Miss Thompson.
prefects - S. Bleasdale, Porter.
sub-prefects - S. Fisher, Wiggans.

Compiler of Newsletter No.13 will be Alison King L.VI.A. and all information should be with her before 1.0 p.m. on Friday 3rd December.

GOOD LUCK WITH THE EXAMS.

News and Views

Games Saturday's Hookey was cancelled

Rugby: 1st.	21, Morecambe	6
2nd.	11, Morecambe	3
U/15	9, Morecambe	5
U/13	28, Morecambe	0

Exams The term's exams ended successfully (we hope) - at least no serious cases of hysteria have yet been reported, although it would probably be wise not to enquire too closely into what is responsible for the loud laughter which can now be heard from behind the closed doors of the two Staff Rooms.

Conference We have not yet made contact with anyone who attended the S.C.M. Sixth Form conference which was held at the Park School last Friday and so all that we can report is that it took place.

Magazine The Editors wish to remind members of the school that all contributions, including reports and entries for the Short Story Competition, should be in before 4 p.m. on Monday, 13th December. As yet the response to the Competition has been pathetically poor.

Diary Notes for the week beginning 6th December

Mon 6 Dec Hockey: Junior practice at 1.10 p.m. (In gym if wet)
Biology: Biology library open to all at 1.25.
Speech Day: in the Hall at 7.30 p.m.

Tue 7 Dec Gym: 1st form society at 1.15 p.m.
Music: clarinet class in Hall at 12.30 p.m.
Messiah practice in Hall at 1.0 p.m.
Magazine: Junior Committee in Room 7 at 1.20 p.m.
Senior Committee in Library at 4.5 p.m.

Wed 8 Dec Gym: 2nd form society at 1.20 p.m.
Music: brass instrument class in Music Room at 1.0 p.m.
EVENING Messiah practice at 7.30 p.m.
Modern Dancing: at 4.0 pm. in the Hall.

Thu 9 Dec Hockey: 1st and 2nd practice at 1.10 p.m. (In gym if wet)
Music: recorder group in Music Room at 1.0 p.m.
Messiah practice (altos) at 1.0 p.m.
Sixth Form: Foll. Evening at 7.30 p.m.

Fri 10 Dec Careers Film: 'The First Years' in JTL at 1.0 p.m.
Science Film: 'Introduction to the Heat Engine' in JTL at 1.20
Music: senior violin class in Music Room at 1.0 p.m.
Messiah practice in Hall at 1.0 pm.
EVENING Messiah practice at 7.30 p.m.

Sat 11 Dec Hockey: U/15 & U/13 matches at Maghull.
Rugby: v. ST. George's College, Blackpool (1st & U/15 away
2nd & U/13 home)

Duty staff: Mr. Kidd, Mr. Beckett
prefects: K. Kazer, Ryding
sub-prefects: B. Hargreaves, Saunders

Newsletter No 14 will be compiled by Elizabeth Nightingale L.VI.A and all information should be with her before 1.0 p.m. on Friday 13th Dec.

Balshavian Newsletter No.14.
Compiled by Elizabeth Nightingale

News and Views

Games: Saturday's hockey was cancelled.

Rugby - 1st.XV	9, St.Joseph's, Blackpool	3
2nd.XV	0, St.Joseph's	6
U/15	0, St.Joseph's	12
U/13	0, St.Joseph's	13

We should like to offer our congratulations to the First XV on their unbeaten record this term. We hope that they can keep it up.

Speech Day was obviously the most outstanding of last week's numerous activities, with possibly the table tennis tournament coming a close second! The former occasion was as usual enhanced by the singing of the school choir and there seems little doubt that the shrieks and yells of encouragement formed an essential part of the latter!

Diary Notes up to the end of term

Mon 13 Dec Hockey : Junior practice at 1.15(in gym if wet)
Magazine: Junior Committee at 1.20 pm. in room 7.
Senior Committee at 4.5 p.m. in the Library
TODAY IS THE LAST DAY FOR COPY.
Music : EVENING Messiah practice at 7.30 p.m.

Tue 14 Dec Gym : first form gym society 1.15 p.m.
Music : clarinet class in Hall at 12.30 p.m.
Sixth Form : Folk Evening plus table tennis at 6.30 p.m.

Wed 15 Dec Gym : second form gym society at 1.15 p.m.
Modern Dancing : at 4.0 pm.
Music : EVENING Messiah practice at 7.30 p.m.
Brass instrument class in Music Room at 1.0 pm.

Thu 16 Dec Hockey: 1st and 2nd practice at 1.10 p.m.
Music : Christmas Concert at 7.30 pm.

Fri 17 Dec Science Film : Essential Rays in JPL at 1.15 p.m.
Music : Senior violin class in Music Room at 1.0 p.m.
Christmas Concert at 7.30 p.m.

Duty staff : Mr. Wilcock , Miss Bromley
prefects : S.Heap, Smith
sub-prefects : M.Sherlock, Hodkinson.

↓ Mon 20 Dec No games turn-outs for rest of term.

Tue 21 Dec Carol Service in the morning
Sixth Form Dance 7.30 p.m.

Wed 22 Dec End of term.

Duty staff : Mr. Rigby, Mr. Shackleton
prefects : C. Parker, Trafford
sub-prefects : B.Higham , Lemmon.

Newsletter No. 15 will be compiled by Christine Sumner L.VI.A. and all information should be with her before 1.0 p.m. on Friday 7th January.

Happy Christmas to everyone.

News and Views

With the merrymaking of Christmas far too quickly over, we nevertheless hope that everyone has returned refreshed and ready for the hard work ahead.

The guinea prize which the Magazine offered for the best short story was won by Anita Horrocks of 4/6 with a story entitled 'Nine Lives'. This and the two runners-up will appear in the next edition of The Balshavian which is due to be published at the end of this month.

The First XV are continuing their victorious run and their 34 pts to nil win over Ormskirk last Saturday gives them their most successful season ever - never before have they won so many matches in one season!

Other results		2nd XV	Ormskirk	
	U/15	0	Ormskirk	24
	U/13			
Hockey	1st XI	2	Chorley G.S.	2
	2nd XI	5	Chorley	0
	U/15	5	Chorley	2
	U/14	0	Chorley	0

Diary Notes for the week beginning 10th Jan.

Mon 10 Jan Hockey : Junior practice at 1.10 p.m.

Tue 11 Jan Music : clarinet class in Hall at 12.30 pm.
Magazine junior committee at 1.20 p.m. in room 7.
Hockey : 1st and 2nd practice at 1.10 p.m.
Rugby : 1st XV turn-out 4.0 p.m.

Wed 12 Jan Gym : first form society at 1.15 p.m.
Music : brass instrument class in Music Room at 1.10 p.m.
Pinafore rehearsal in Hall at 1.10 p.m. prompt.
Hockey : junior practice at 1.10 p.m.
Rugby : U/15 turn out at 4.0 p.m.
Modern Dancing : at 4.0 pm.

Thu 13 Jan Hockey : 1st and 2nd practice at 1.10 p.m.
Rugby : 1st XV turn out
Gym : senior society at 1.10 p.m.
Film : Paris and Ile de France in JFL at 4.5 p.m.

Fri 14 Jan Music : senior violin class in Music Room at 1.0 pm.
Pinafore rehearsal in Hall at 1.10 p.m.
Careers film : 'A Sense of Belonging' in JFL at 1.10 pm.

Sat 15 Jan Hockey : 1st, 2nd, U/15 & U/14 matches at Queen Mary's, Lytham
Rugby : 1st and U/15 v. Blackpool G.S. away
2nd and U/13 v. Blackpool G.S. home - ALL at 10.30

Duty Staff : Mr. Downer, Mrs. Gregory
Prefects : S. Walsh, Carlisle
Sub-prefects : L. Mead, Duckworth

Newsletter No. 16 will be compiled by Barbara Antoine L.VI.A. and all information should be with her before 1.0 p.m. on Friday 14th January

Balshavian Newsletter No. 16
Compiled by Barbara Antoine

News and Views

Various activities are now well under way. In particular, our choral enthusiasts are deeply engrossed in rehearsals for the forthcoming production of H.M.S. Pinafore.

Games results:

ALL Games cancelled

Diary Notes for the week beginning 17 th January

Mon 17 Jan Hockey : junior practice 1.10 p.m.

Tue 18 Jan Hockey : 1st and 2nd practice at 1.10 p.m.

Rugby : 1st XV turn out at 4.0 p.m.

Music : clarinet class in room 8 at 12.30 p.m.

stringed instrument class Music Room at 12.50 p.m.

girls' chorus Pinafore in Hall at 1.5 p.m. prompt

Worden house meeting for sixth formers at 1.20 pm.

Wed 19 Jan Hockey : junior practice at 1.10 p.m.

Rugby : u/15 turn out at 4.0 p.m.

Gym Society - first year at 1.15 p.m.

Modern Dancing at 4.0 p.m.

Music : brass instrument class in Music Room at 1.10 p.m.

male chorus Pinafore in Hall at 1.5 p.m.

Thu 20 Jan Science film : The Study of Oil - the gravimetric search at 1.15 in JPL

Hockey : 1st and 2nd practice at 1.10 p.m.

Rugby 1st XV turn out at 4.0 p.m.

Gym Society - seniors at 4.10 p.m.

Four o'clock Film : a new and highly interesting film about life in a South American country which has up till now depended largely on oil for its income. Of special interest to geographers and those who are either doing or intending to do Spanish. Title : Venezuela looks ahead. Place : JPL. ALL welcome.

Fri 21 Jan Music : full chorus and principals Pinafore at 1.5 prompt
Clayton house party 6.30 p.m.

Sat 22 Jan Hockey : 1st, 2nd, U/15 v. Park School.

Rugby : v. Southport 1st & U/15 at home
2nd & U/13 away ALL at 2.30 p.m.

Duty staff : Mr. Harling , Mr. Boardman
prefects : J.Lake, Forrext
sub-prefects : P.Mulgrew, Fowler

Advance notice : The Balshavian is due to appear on the 28th January. Special features include The Shape of Things to Come (an account of current plans for expansion), Life at the Top (the reality of life in the Sixth), a look at nursing (the first in a new series designed to enquire into different careers), the facts about the plans to replace Balshaw's, First Impressions (a collection of untarnished views of Balshavian life), the winning entry in the short story competition as well as many other items of interest to all.

Newsletter No. 17 will be compiled by Farrington L.VI.A. and all information should be with him before 1.0 p.m. on Fri 21 January.

News and Views

A very cold week ended with the cancellation of all school games for the second Saturday in succession.

Following the successful showing of films at lunchtime during the Autumn Term the brave attempt to show films at four o'clock seems doomed to failure unless there is a better response in the weeks ahead. This does not apply to the Tuesday feature film, however, for the judging from the widespread interest already shown next Tuesday's 'Zazie dans le metro' promises to be a great success.

The main notice boards have rarely been so full. Amongst the many and varied activities being publicised (there are some truly excellent posters by the way) perhaps the most intriguing is Worden's announcement of a Fancy Dress Parade at their forthcoming party.

Diary Notes for the week beginning Monday, 24th January

- Mon 24 Jan Hockey: junior practice at 1.10 p.m.
 Biology: library open at 1.30 p.m.
 Rugby: special turn out 4.00 pm. (team selection for next season)

 Don't forget your magazine money!
- Tue 25 Jan Hockey: 1st and 2nd turn out at 1.10 pm.
 Music: woodwind class in room 8 at 12.30 p.m.
 stringed instruments in Music Room at 12.50 p.m.
 Pinafore female chorus at 1.05 p.m. in Hall
 Rugby: 1st XV turn out at 4.05 p.m.
 Film: Zazie dans le metro - French comedy with sub-titles
 in English at 4.10 in Hall. Admission by programme
 only. Programmes available (1/3) in advance from
 your French teacher or from Mr. Eccles. Cups of tea
 available in dining room promptly at 4.00 p.m.
 Film lasts for 88 minutes.
- Wed 26 Jan Hockey: junior practice at 1.10 p.m.
 Gym Society for first year at 1.15 p.m.
 Music: brass instrument class in Music Room at 1.10 p.m.
 Pinafore male chorus in Hall at 1.05 p.m.
 Rugby: 2nd and U/15 turnout at 4.00 p.m.
 Modern Dancing; at 4.00 p.m.
- Thu 27 Jan Hockey: 1st and 2nd practice at 1.10 p.m.
 Rugby : 1st XV turnout at 4.00 p.m.
 Gym Society for seniors at 4.10 p.m.
 Science film: 'A STORY OF ACHIEVEMENT'. A historical film
 telling the story of the invention and
 manufacture of margarine. JPL at 1.10 p.m.
 S.C.M.: talk on 'The Work Of a Prison Officer' in Room 1.3
 at 4.00 p.m.
- Fri 28 Jan Magazine - publication day.
 Music: Pinafore chorus and principals in Hall at 1.05 p.m.
- Sat 29 Jan Hockey: 1st, 2nd & U/15 v. Blackpool Collegiate (home)
 Rugby: 1st XV v. Maghull (home) 10.30 a.m.
 Games v. Fulwood will probably be postponed until
 a later date and will perhaps be played as evening

Duty Staff: Miss Wallbank, Mr. Leathley
Prefects: S. Bleasdale, Brown, T.
Sub-prefects: E. Park, Wildman, A.

Advance notice: watch for details of Sixth Form Table Tennis tournament

Next newsletter by Kathleen Glover : information by 1.0 p.m. 28 Jan. p.l.

Balahavian Newsletter No. 18

News and Views

With one third of the school absent it is hardly surprising that we have nothing to report. Games were cancelled for the third week in succession and publication of the Magazine has been delayed until attendance is back to normal.

Diary Notes for the week beginning 31st January

Mon 31 Jan Hockey: 1st and 2nd at 4.00 p.m.
Gym Society for first year at 1.10 p.m.

Tue 1 Feb Magazine: junior committee in room 8 at 1.20 p.m.
Rugby: 1st XV at 4.05 p.m.
Hockey: junior practice at 1.10 p.m.
Music: woodwind class in room 8 at 12.30 p.m.
strings in Music Room at 12.50 p.m.
Pinafore female chorus in Hall at 1.05 p.m.

Wed 2 Feb Music: brass instrument class in Music Room at 1.10 p.m.
Pinafore male chorus in Hall at 1.05 p.m.
Hockey: junior practice at 4.10 p.m.
Rugby: 2nd and U/15 turnout at 4.05 p.m.
Modern Dancing at 4.00 p.m.

Thu 3 Feb Magazine: senior committee in Library at 4.00 p.m.
Science Film: 'Off-shore Structures' at 1.15 in JPL
Hockey: 1st and 2nd at 4.10 p.m.
Gym Society for seniors at 1.15 p.m.
Rugby: 1st XV at 4.05 p.m.
German Film: 'Germany Today' - an up to the minute look
at modern Germany of interest not only
to those who are doing German. (In English)
AT 4.00 P.M. in JPL.

Fri 4 Feb Music: strings in Music Room at 1.00 p.m.
Pinafore principals and chorus in Hall
Worden House Party at 6.00 p.m.

Sat 5 Feb S.C.M. visit to Shepherd Street Mission at 2.15 p.m.
- names in advance.
Rugby 1st and U/15 v. Upholland away
2nd and U/13 v. Upholland at home ALL at 10.30 a.m.
Hockey 1st, 2nd & U/15 v. Rivington at home.

Duty staff: Mr. Bull, Mr. Holmes
prefects : J. Hunt, Hunter
sub-prefects : B. Parker, Armstrong

Newsletter No. 19 will be compiled by Margaret Gormley L.VI.A. and
all information should be with her before 1.00 p.m. on Fri. 4 Feb.

News and Views

The trials of the past week seem to have centered on L.VI.A. After an episode in which several of their number were trapped in the bike-shed - sorry, room 18 - a notice has been received stating that no girls will be allowed to go on the forthcoming sixth form trip to Parkside Colliery. Who said equality for all?

The S.C.M. trip to the Shepherd Street Mission had to be cancelled owing to illness among the children there. The number of books being collected for them is rapidly increasing but more would be welcome if only to give L.VI.A. more reading material for the lunch-hour!

With the publication of the January edition the school magazine has again become a subject for discussion and perhaps this is the ideal time to offer the reminder that the pages of the magazine are open to ALL members of the school. The Editors would be very glad to have and even to publish views and comments.

This term the Editors hope to support two national competitions. The first of these is being organised by PUNCH and offers a prize for the best humorous article and this will be backed by the offer of a one guinea prize for the best entry from Balshaw's. The second competition is being run by THE DAILY MIRROR and is open to boys and girls under the age of 16. Details of either of these can be had from Mr. Eccles, Mr. Holmes or Mrs. Gregory on behalf of the Editors.

Rugby results:	1st	3	Upholland	20
	2nd	0	..	25
	U/15	6	..	6
	U/13	19	..	3

Diary Notes for the week beginning Monday, 7th February

<u>Mon 7. Feb</u>	<u>Gym</u> society for first year at 1.10 p.m. <u>Hockey</u> : 1st and 2nd at 4.00 p.m. <u>Rugby</u> : leagues Guerden v. Worden
<u>Tue 8 Feb</u>	<u>Hockey</u> : junior practice at 1.10 p.m. <u>Music</u> : woodwind class in room 8 at 12.30 p.m. strings in Music Room at 12.50 p.m. Pinafore female chorus in Hall at 1.05 p.m. <u>Rugby</u> : 1st turnout at 4.00
<u>Wed 9 Feb</u>	<u>Music</u> : brass instrument class in Music Room at 1.10 p.m. Pinafore male chorus in Hall at 1.05 p.m. <u>Hockey</u> : junior practice at 4.10 p.m. <u>Modern Dancing</u> : at 4.00 p.m. <u>Rugby</u> : leagues Clayton v. Worden <u>Magazine</u> : senior committee in the Library at 4.05 pm.
<u>Thu 10 Feb</u>	<u>Gym</u> society for seniors at 1.15 p.m. <u>Hockey</u> : 1st and 2nd at 4.10 p.m. <u>Science</u> film : 'How Which tests cars' - a film made by the Consumers Association giving details of how the tests reported in their magazine 'Which?' are carried out. In JPL at 1.15 p.m. <u>Rugby</u> : 1st turnout.
<u>Fri 11 Feb</u>	<u>Music</u> : strings in Music Room at 1.00 pm. Pinafore principals and chorus in Hall at 1.05 p.m.
<u>Sat 12 Feb</u>	<u>Rugby</u> : 1st and U/15 v. Hutton at home 2nd and U/13 v. Hutton away ALL AT 2.30 p.m.

Duty staff : Mr. Bulman, Miss. Bromley
 prefects : S.Heap, Park, S.C.
 sub-prefects : J.Platt, Ashorpft S.H.

Newsletter No.20 will be compiled by Alison King L.VI.A. and all information should be with her before 1.00 pm. on Friday 11th. Feb.

News and Views

News and views
Speculations that the 'apparitions' at the Worden House party caused the school clock to shatter are completely unfounded. Even so, however, it would still be true to say that the party went with quite a bang. The school will be closing at the end of this week for repairs - and half term, of course!

Enquiries have failed to reveal the fate of newsletters which mysteriously disappear from noticeboards. Surely they aren't that popular!

Response to the Christian Aid Week Competition has so far been negligible and we would remind would-be competitors that entries must be in before March 19th.

There has been some interest shown in the request for a home for a seventeen year old German boy during the summer term. All those who have shown interest should make their position clear to Mr. Eccles before 1.00 p.m. on Tuesday, 15th February.

We extend our sympathy to all those who have to cope with the Mock Exam during the next few days.

Half-term will end on the 27th February and we hope to see a good attendance when school re-opens on Monday, 28th February.

Rugby:	1st XV	8	Hutton	3
	2nd XV	5	..	8
	U/15	8	..	9
	U/13	0	..	30

Diary Notes for the ^{0/13} ⁰ ³⁰ week beginning Monday 14th February

Mon 14 Feb

<u>Hookey</u>	:	juniior turnout after school
<u>S.C.M.</u>	:	'The Work of the Samaritan League' by the Rev. B.G.Moore in the Lirary at 4.00 p.m.

Tue 15 Feb

<u>Rugby</u>	:	S.G.Moore in the Library at 4.00 p.m.
<u>Music</u>	:	junior knock out Clayton v. Guerden 4.00 p.m. woodwind class room 8 at 12.30 p.m. strings in Music Room at 12.50 p.m. Singapore female chorus in Hall at 1.05 pm.

Wed 16 Feb

Rugby	:	1st XV at 4.00 p.m.
Hockey	:	junior turn out at 4.00 p.m.
Music	:	brass instrument class in Music Room at 1.10 p.m. Pinafore male chorus in Hall at 1.05 p.m.

Modern Dancing : at 4.00 p.m.

German songs : in JPL at 1.15 p.m.

Thu 17 Feb

Hockey : all members of 1st and 2nd to turnout today after school.

Rugby : match v. Wellington House at 4.15 p.m. (1st XV)
junior knockout final at 4.05 p.m.

Fri 18 Feb Music : strings in Music Room at 1.00 p.m.
Tinafore principals and chorus at 1.05 in Hall

Sat 19 Feb Hockey : 1st, 2nd, U/15, U/14 v. Ashton in Makerfield (away)

Duty staff : Mr.Kidd, Mr. Becket
 prefects : C.Parker, Ryding C.D.
 sub-prefects : H.Ranson, Crompton, J.V.

Newletter No.21 will be compiled by Elizabeth Nightingale and all information should be with her before 1.0 p.m. on Fri.18 Feb.