

*Balshaw's  
Church of England High School  
Leyland*



*A further history  
1981 to 2014*

*Compiled and edited by  
Keith and Ollie Woodcock*

**Balshaws C.E. High School**  
Church Road, Leyland, Lancashire PR25 3AH



## Acknowledgements

Keith and Ollie Woodcock wish to thank all those who have, in any way, contributed to the development of this book. Individual memories and reflections have added detail to the facts gleaned from the formal and informal resources used to collate the history.

Documents used include:

- 1) Governors' meeting files 2000 – present day
- 2) Governors' Annual Report to Parents – 1993-2000
- 3) School Prospectus – 1983, 1998, 2009-2013
- 4) Speech Night Programmes and Speeches 1981-2013
- 5) Transform Magazines
- 6) Mega-Mag magazines
- 7) The school's website
- 8) Ofsted and SIAS reports
- 9) Photographs from various sources
- 10) Local newspaper articles

Whilst seeking to ensure that factual details and dates are accurate, we apologise for any errors, in the hope that they will be minor and that they do not detract from the main purpose of the book.

We wish to express thanks for generous financial support towards the publication of this book to: Mr. and Mrs. Iddon, Brian Pilkington Estate Agents, Balshaw's Foundation and the family of Pat Leach, who donated money in her memory.

### Keith Woodcock



Keith joined Balshaw's Science department as Head of Physics in 1981, having previously worked at schools in Burnley, Southport and Wigan. Having been appointed second in Science in 1990, Keith became Key Stage 4 Exams Officer in 1996. He was a parent and staff governor for 10 years from 1989. Keith retired in 2006 and returned as a Foundation Governor in January 2007. He has been Vice Chair since 2009.

## Contents

1. Forewords by Miss Jo Venn (Headteacher 1995-2014), Mr. Paul Ingram (Headmaster 1973-1994), Mr. Tim Callaghan (Chair of Governors 2005-present) and Mr. Mike Otter (Chair of Governors 1997-2005)
2. Introduction
3. Acknowledgements
4. All Change in Education
5. The Building
6. The Curriculum
  - Subjects
  - Examinations and results
  - Inspections and reports
7. Awards and Other Recognitions
8. A Change in Status
9. The Governors
10. Balshaw's Association
11. Balshaw's Foundation
12. School Life
  - Timetable
  - Teaching and learning
  - Educational visits
  - Visitors
  - Speech Night
  - Drama and music
  - The worship life of the school
13. Balshaw's and the Community
14. Sport at Balshaw's
15. The Pride of Balshaw's
16. Staff Past and Present
17. Appendices
  - Staff list 2013
  - List of long-serving members of staff
  - List of Speech Night Speakers
  - List of Headteachers 1786-2014
  - List of Head Boy/Head Girl 1981-2013
  - List of acronyms used in the text



#### *Foreword from Miss Jo Venn (Headteacher 1995-2014)*

*I first spoke to Keith about bringing George Birtill's book up to date two years ago, saying that I would love this to happen before I retired as Headteacher. Keith and Ollie have worked tirelessly over the past twelve months to glean and edit the material, contact and cajole so many people to be involved.*

*Keith, like myself, shares a passion for detail and we know that if the detail is right, the rest will follow. This book shows this. There could be so much to put in and I think they have struggled with what to leave out.*

*I have been very lucky to have been adopted as an honorary Balshavian and have loved every minute of my time here from my appointment in June 1994 by the Governors, and under the chairmanship of Dennis Robinson, who has remained a faithful friend and supporter of all that we have tried to achieve. His successors, Keith Horsfall, Geoff Demack, Mike Otter and Tim Callaghan have always given me untiring support.*

*Balshaw's has developed me both personally and professionally and I have been very privileged to work with amazing staff-creative, inspirational, talented, hard-working, technical, intuitive but most important, caring, loving and loyal to each other, to the pupils and to all associated with the school. This book really reflects the "Balshavian spirit" which has not just endured, but blossomed over the 230 years of its existence. I was very fortunate that Paul passed on a superb school to me, and I hope that the next Headteacher, Steven Haycocks, will feel as proud as the previous 13 of the Balshaw's legacy. With the excellent parents, governors, staff and pupils the school has a very firm foundation.*

*As Heads we do not always get it right but our Christian service must always be to encourage each individual, irrespective of ability, talent or background, to be the "best that they can be". I look forward to Balshaw's going from strength to strength and future generations adding to all that is achieved thanks to the vision of Richard Balshaw for the children of Leyland.*

*Once again I cannot thank Keith and Ollie enough for this fantastic document which encompasses what a wonderful school Balshaw's has been, is and always will be. God Bless all connected with the school.*

#### *Foreword from Mr. Paul J. Ingram (Headmaster 1973-1994)*

*I am delighted to be asked to contribute to this further history of Balshaw's CE High School by my good friend and colleague, Keith Woodcock.*

*I was fortunate in having Keith as my Head of Department when I was called upon to teach Physics from time to time. He has maintained his connection with the school in retirement by taking on the challenging position of Vice Chair of Governors. It is eighteen years since I retired as Headteacher. During this time very many pupils have passed through the School contributing to its life. Looking back over the last forty years, I can appreciate the tremendous progress made by the school. This progress has been based on the firm foundations of the school as a well-established grammar school.*

*An Ofsted inspection at the time of writing has graded the school 'outstanding' in all aspects of its work. Congratulations to Miss Venn, all members of staff, pupils, parents and governors for this result. I have been at several family gatherings in Leyland recently and met students from former years who are a credit to their families and their earlier learning. I was in the stand at Preston Grasshoppers Rugby ground and started a conversation with a neighbour. The person turned out to be the father of Karen Taylor, Head Girl in 1985. She now holds a responsible scientific post in Cheshire.*

*Others can talk in detail about building and curriculum developments generated within the school in response to national policies. Earlier this year the BBC radio programme 'Any Questions' chaired by Jonathan Dimbleby took place in the school hall. Inevitably there was a question about raising standards in schools. Balshaw's has achieved improved standards by the united efforts of all staff who care for their pupils.*

*After the Sixth Form had departed in the summer of 1974, the number of pupils on roll was approximately 560. This precluded any substantial building work by the Authority until numbers had built up again. Mrs Ruby Kelley as Madam Chairman of Governors prompted the Lancashire Authority by offering a loan from Foundation funds. As a result the top floor of the 'Art' block was converted from a Sixth Form centre to Art rooms without cost to the Foundation. The art block has since been demolished! Delays in getting building improvements were frustrating but did have one advantage, namely a computer room with equipment was included in the building programme for the school. The Authority funding was supplemented with money from the PTA Summer Fair. The PTA and the Harris Charity provided our first minibus with garage.*

*The target size for the school was six forms in each year giving 900 pupils in all and the school has been full at this total for more than thirty years. This has enabled planning for pupils' needs to be effective. I rejoice in the friendship I received from all staff and pupils. The judgement of Governors was always sound and their guidance was much appreciated by me. The school motto is freely translated - Not to Ourselves But unto Others - and this is the foundation of good standards of behaviour throughout the school.*

*The school has good relationships with Leyland Motors and the Leyland and Birmingham Rubber Company (L&B). The 'Motors' provided classes after school for those pupils from all the Leyland schools who were interested in a career in engineering. L&B donated the Lord Robens prize after a visit by Lord Robens to L&B. The prize has been awarded annually to an outstanding pupil in the fifth form, Speech Night was always a major event with former students such as Clarke Carlisle of the Professional Footballers' Association, Phil Jones of Manchester United FC and Lorraine Norris, Chief Executive of Preston City Council making contrasting and outstanding speeches. The 2013 Speech Night was Miss Venn's last one. She can retire with pride at the development of the school during her Headship with our very best wishes.*

*(Please note that certain parts of this foreword appear within the main text.)*



#### **Foreword from Tim Callaghan (Chair of Governors)**

*Let me start by saying what an honour and pleasure it is to write this foreword to the latest chapter in the history of our school. My history with Balshaw's has been in three distinct phases; as a pupil, as a parent and now Chair of Governors and Chair of the Balshaw's Association. I'm afraid that covers 48 years! The people associated with this school are often referred to as the Balshaw's family. There is no better way to describe the way in which we pulled together in good times, hard times or sad times. I believe that the majority of people touched by Balshaw's, in whatever capacity, have both a positive and an enriching experience to take away with them, wherever they go and whoever they become. Thanks to Keith and Ollie for their hard work in compiling these pages and telling the story which has involved so many over the years. That story is one of everyone striving for perfection and in doing so, consistently achieving our motto of 'Aiming at Excellence'. Enjoy!*

#### **Foreword from Mr. Mike Otter (County Councillor, Governor and Chair of Governors 1997-2005)**

*It is an honour for me to write this article for the new updated book about the history of Balshaw's.*

*I have served as a Governor at the school for the past 22 years (including 8 of those as Chair of Governors) from 1991 up to the present day and have, at some time, had the privilege to sit on or chair all the committees, working with some excellent Governors.*

*During this time, I have witnessed many changes in the school with regard to both staff and buildings, but the one constant thing that has remained has been Head teacher Jo Venn's energy and drive (and for this I must record my thanks to the foresight of the Governors on the selection panel by appointing Jo for Headteacher), as she has taken the school from strength to strength.*

*Some of the highlights for me over these years include attending the 2000 Millennium celebration dinner in the school hall (prepared and served by pupils with the guidance of a professional chef); attending the Balshaw's 225<sup>th</sup> anniversary dinner in 2007, also held in the school hall; Jo gaining the 'Lancashire Woman of the Year' award for 2004 and the C.I.P.F.A. Public Servant award for 2005; seeing the old wooden Terrapin and R.O.S.L.A. block classrooms being replaced by a two phased build programme housing the maths, art and technology departments which also brought the school under one roof.*

*There have been many more improvements to the fabric of the building over the last 22 years, however the one thing that far outweighs this is the outstanding achievements of the students for which thanks must go to past and present staff under Jo's leadership.*

*(Please note that some parts of this foreword appear within the main text.)*

#### **The First 200 Years**

Balshaw's Charity School was founded in 1782 by Richard Balshaw. In 1982, as part of the 200 years celebrations, George Birtill produced 'Balshaw's School 1782-1982, A History of 200 Years'. The book records the history of the founding of a trust for a charity school to 'provide for the education of the poor of the parish, the first 1784 building on Golden Hill, the second building dated 1905 and the current school on Church Road built in 1931. The development of the school, its sporting and academic achievements are described in considerable detail. The book concludes with the changes implemented as a result of the opening of Runshaw College in 1974, when the school lost its sixth form and grammar school status to become an 11-16 comprehensive high school. The headteacher, Mr. Fred Bleasdale, left to become principal designate of the newly established Runshaw College and was replaced by Mr. Paul Ingram, who took up the post of headteacher in September 1973.

The final paragraphs of George Birtill's book mention the fact that many former pupils – 'Balshavians' – had returned as teachers. This is a tradition which has been maintained throughout the past thirty years. Balshaw's attracts considerable loyalty and commitment.

#### **From 1982 to 2014**

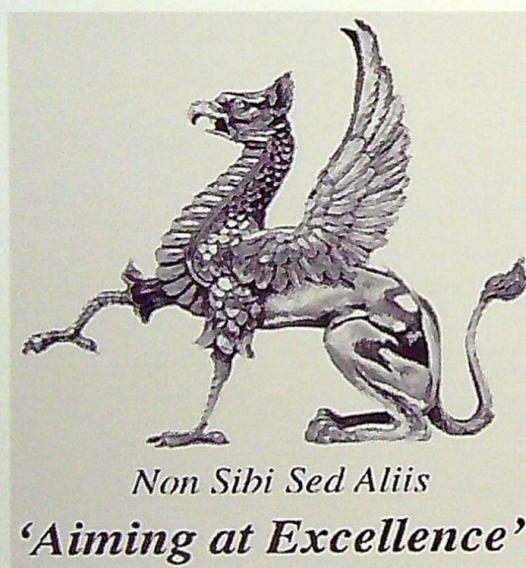
The purpose of this book is to record the extensive changes and developments experienced at Balshaw's Church of England High School from 1982. Through the leadership of two exceptional headteachers, Mr. Paul Ingram and Miss Jo Venn, the school has maintained and developed its excellent reputation within South Ribble and Lancashire and it has been recognised as 'outstanding' and 'distinctive' by national bodies such as Ofsted. The school has grown in size from 895 pupils in 1981 to the current 930. The building has been altered and extended to such an extent that past pupils visiting now may not recognise the internal form of the building at all. All aspects of education have been revolutionised; changes in the curriculum, testing and assessment, the development of information technology and the changes in teaching and learning methods have all had a major impact on the daily life of the school. Developments in educational and political theory, resulting in the many changes in educational policy, have also had a major impact on school life, influencing the working conditions of staff and pupils, resources and the status of the school.

(See appendix for full list of Headteachers since 1786)



### All Change in Education

The period covered by this book has seen remarkable educational change, influenced by political parties and educational theory. The whole period has seen the transfer of power from Local Educational Authorities to central government. Although we do not wish to spend time delving into the 'politics of education' the impact of successive Conservative and Labour governments on the development of Balshaw's cannot be ignored. The drastic changes in the governance of the school, the curriculum and assessment, teaching and learning and the introduction of specialist college status have all come about as a result of education acts, reports and white papers. Balshaw's has, like all schools, had to constantly review its practice in order to improve standards and meet new targets. It has been successfully 'Ofsted-ed' five times, featured highly in local and national league tables and been identified as one of the best state schools without a sixth form in a 'Good Schools Guide'. None of these would have featured in George Birtill's book!



### The Building

The Church Road site, occupied by Balshaw's since 1931 has undergone continual extension and improvement to meet the changing needs of the school. In the 1970's, when the school leaving age was raised from 15 to 16, the 2-storey ROSLA block was built. Art was taught in this area from 1975, when the library was moved to the old art room. Temporary teaching areas, referred to as 'terrapins' and 'prefabs', were established at around the same time and were used as teaching areas for history and maths.



An aerial view of the school showing the single-storey science block, observatory, ROSLA block and one of the terrapin temporary classrooms. (Taken prior to any modifications being made in the early 1980's.)

No further development took place prior to the 1980's. Paul Ingram explains the reason for this: "After the Sixth Form had departed in the summer of 1974, the number of pupils on roll was approximately 560. This precluded any substantial building work by the Authority until numbers had built up again. Mrs Ruby Kelley, as Madam Chairman of Governors, prompted the Lancashire Authority by offering a loan from Foundation funds. As a result the top floor of the 'Art' block was converted from a Sixth Form centre to Art rooms without cost to the Foundation."

In the summer of 1981 architects' plans arrived in school, outlining the major building programme due to commence in June 1982. The plans included a west wing, new gym and classrooms above the science block. This was the start of what would become a 2-year building programme providing 3 additional classrooms and a computer studies room as well as the new gym. Computer studies, still very new to schools at this time, were introduced to the curriculum in September 1982. The new



equipment arrived early in the year. The new gym was completed in 1983 and work then started on the creation of 3 geography rooms above the science laboratories.

It must be remembered that throughout all the building and refurbishment work, the school 'carried on as normal'.

By 1984, new bases were created for the teaching of control technology, engineering drawing, woodwork, craft and pottery. Space had also been created for a new library and for careers teaching.



The former science block with the additional upper floor used by the geography department and a textiles room.

There were 3 new geography rooms and a textile room above the science block. The Parent Teacher Association (PTA), contributed to the refurbishment of the observatory around the same time and they also supported the installation of new stage lighting in the hall.

Balshaw's Association, formerly called the PTA, have provided excellent financial and practical support throughout the period covered by this book. In 1986 the PTA made a large contribution to the cost of replacing all the curtains in the hall. In 1988 the Balshaw's Association met the cost of buying the school's first mini bus. This was achieved through a number of fund-raising events, one of which was monthly Saturday waste paper collections. A garage was needed to house the mini bus. This was completed in 1989 with the help of YTS students at Northbrook Training Centre. The newspaper collections continued for a number of years, helping to pay for the extension of the computer network and the conversion of two cloakrooms into classrooms in 1991. The Balshaw's Appeal Trust also provided funds for a weather recording and a satellite recording station to be installed in the same year.

The Governors' Annual Report to Parents 1993-94 refers to the refurbishment of the art rooms. Desks, chairs and tables were obtained from a local school which closed down. The following year, 1995, a 'Windows Appeal' was launched to replace the hall windows 'which were in a dreadful state'. Although the appeal was initially somewhat slow in gaining funds, it was successful. The appeal financed the new windows which were replaced during 1996-97. Balshaw's Association paid for the redecoration of the hall after the new windows were fitted.

The 8 large and 4 smaller windows were installed in 1931. The appeal was needed because 'major cuts in educational funding' at the time did not allow for the replacement from the school budget. The Mayor of Chorley and former Guardian editor, George Birtill, was the founding president of the appeal. Patrons included the Right Reverend Alan Chesters (Bishop of Blackburn) and the Lancashire Chief Education Officer, Mr. Andrew Collier. The appeal was introduced at a reunion night held on 13<sup>th</sup> June 1995. It was estimated that £27,000 was needed to meet the cost, and 1 large window could be sponsored for £2,200.



The past pupils of the 1940's and 1950's, who meet regularly for reunions, sponsored one of the windows.

Minor refurbishments, such as the food technology area re-vamp (cooking or domestic science) in 1995 continued to take place over the years leading up to the millennium. Some were carried out using grants from the Lancashire County Council and others utilised government grants such as New Deals for Schools. This provided the funds for the refurbishment of toilets and the refitting of two science laboratories in 1997-98. A bid was secured for disabled access and a designated disabled toilet. The Balshaw's Association continued to provide additional funds which were used to curtain the dining room and some classrooms in 1998-99.

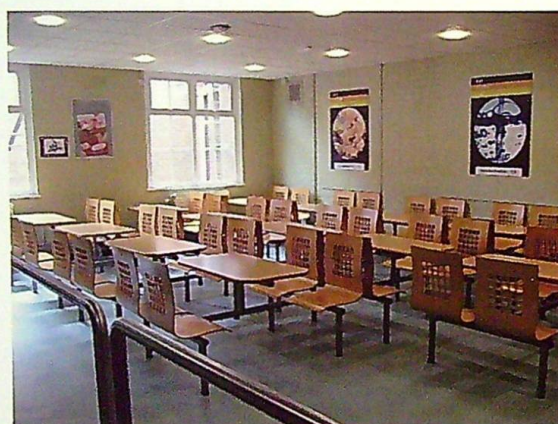
In the years leading up to 2000, concern about the state of the history block was logged by staff, pupils, governors and parents. Despite vigorous efforts to seek funding to remove and rebuild, nothing was done as no money could be made available from any source. Governor records show that all avenues had been tried. The terrapins or prefabs were grossly inadequate with 'water flowing through pupil areas and alongside the corner of the technology block-pupils constantly exposed to wet feet.' Parents wrote of their concerns and the Ofsted report of 2000 noted that 'the poor quality of accommodation for music and history has an adverse impact on the quality of learning.' In March 2000 the school was informed that it qualified for priority listing regarding another major concern-the inadequate provision of science laboratories-but that it did not yet qualify for funding to replace the temporary buildings.

However, the action plan developed as a result of the October 2000 Ofsted report included £500,000 to 'start off' essential accommodation improvements. Some additional government grants became available in 2001. 'Science in the 21<sup>st</sup> Century' provided £55,000 to refurbish the biology laboratory room 26. In December of that year the school was told that it was 'near the top of the LEA's list for funding to replace the temporary buildings' and in April 2002 funding was received!

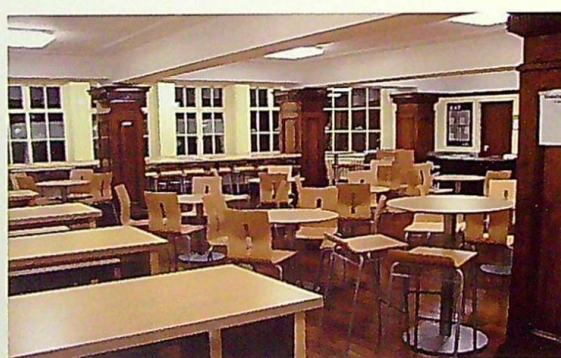
The major building programme planning began in April. There were to be two phases. Phase 1 would provide 6 new classrooms, a 2-storey corridor linking the main



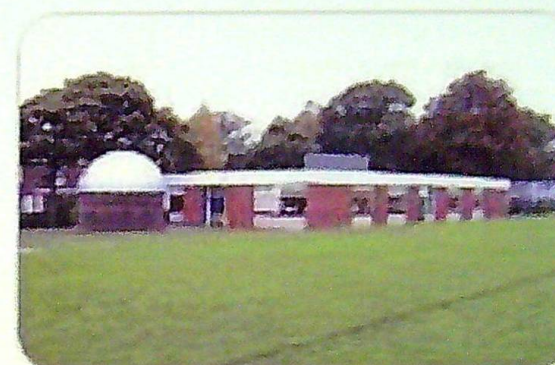
building with the science and geography block, toilets and a lift, kitchen and new dining room. It also provided for the removal of the terrapins! Phase 2 plans included the removal of the ROSLA block built in the 1970's, and the building of new art, ICT and electronics rooms and an extension to the existing technology block. The Phase 1 part of the programme was agreed in July 2002 at a cost of £1,008,000. The LEA provided £848,000 as part of their Capital Strategy Plan 2003-03 and 2003-04, leaving the school to find £160,000. The planning process took just over a year. Builders arrived on site in June 2003. The observatory and telescope were dismantled and work began in earnest. The telescope was donated to Preston and District Astronomical Society (PADAS). School life continued throughout the building programme. Temporary exits were created and staff and pupils became used to living and working within a building site! Work progressed quickly and by January 2004 the kitchen was ready for handover.



The 'new' dining room created by Phase 1 and the original dining room. The extended kitchens are between the 2 areas.



The new classroom block and corridors were ready for the governors to view in February and the maths block was handed over on 23<sup>rd</sup> March.



The observatory which was demolished in 2003.

Phase 2 planning took place during the Phase 1 building. £790,000 was allocated for Phase 2 of which the school had to find £235,000. It was due to start in October 2004 and be completed by July 2005. There was a delay, during which £20,000 was spent on repairing the roof area around the gym.



The photo shows the builder's compound and temporary entrance from Langdale Road following completion of Phase 1 and before Phase 2 of the building work.

Phase 2 work commenced on 14<sup>th</sup> March 2005 and in December of that year the ROSLA block was finally demolished.

Although the 2-phased building work was almost completed by the end of 2005, there were problems, some of which were noted in governors' meeting minutes: 31<sup>st</sup> January 2006-Phase 1 roof still not finished and Phase 2 although complete, had some 'snagging problems' to be fixed.



Despite the considerable building programme, the need to continue to improve teaching and learning facilities was vital. In January 2006 a bid was placed with New Opportunities Funding to refurbish the technology block at an approximate cost of £40,000 per room. The bid was successful in gaining a grant of £72,000. However, as the estimated cost of the refurbishment was £486,592 in May 2006, the school had to rethink its needs. In September governors agreed to refurbish each room in the technology block, providing new benches etc. Work was to commence in May 2007, taking one room at a time, at a cost of around £300,000.

Preparation for Phase 3 of the building programme began during the holidays. This involved a type 3 asbestos survey in the CDT area. A new bicycle shed was erected at a cost of £22,000 and the new build programme started on May 14<sup>th</sup> 2007.



The 'old' bicycle sheds

The 'new' bicycle shed.



The science laboratories continued to be improved. In November 2008 a bid was placed for funding to refurbish the laboratories in science rooms 40, 41 and 42 at an approximate cost of £60,000 per lab. The Wolfson Foundation visited the school in autumn 2009 with the view of making a possible donation of £40,000 for the science labs. In January 2010, the Wolfson Foundation awarded £30,000 towards the science laboratory refurbishment and work began in the summer.



Science Lab Room 42  
2013

Other changes around the same time included the development of the Inclusion Unit in 2010 at a cost of £14,885 and preliminary planning for a new library and resources centre. Applications for grants to support this development were made to the Foyle Foundation and to the Harris Trust and it was hoped that work would take place in 2011. By February 2011 quotes had been obtained for aspects such as air conditioning and solar tinted windows. Work began in the summer term of 2011.



The library and learning resource centre  
2011



Building work began on the office and other areas in February 2012. A new Head of House room and stockrooms for the RE and English departments were included in this building phase which cost about £26,300.

The most recent developments have centred around the improvement of the school's sports facilities. In June 2013 planning permission was sought for new netball courts and for the construction of a M.U.G.A. (synthetic pitch).





Work starting on the tennis courts October 2013.



The new tennis and netball courts completed December 2013.

Planning permission was finally granted in February 2014 for the M.U.G.A. to be sited between the school and the brook.

Outmoded gym equipment was removed and the tennis courts were re-located. The work on the re-location of the tennis courts, at a cost of £140,000, was undertaken in autumn 2013. A much-needed refurbishment of the Music and Drama areas was agreed in November 2012, at an estimated cost of £102,362.

## The Curriculum

The school prospectus for 1983-84 describes the curriculum provided for pupils of all ages. In the 1<sup>st</sup> and 2<sup>nd</sup> forms (Y7 and Y8) pupils were taught: English, Maths, Science, French, History, Geography, Art and Craft, Domestic Science, Music, RE and PE. They were taught in mixed ability groups other than for Maths and Science in which they were setted according to ability. In the 2<sup>nd</sup> year, setting was introduced in English, Maths and French. When in the 3<sup>rd</sup> year (Y9) pupils studied German and Engineering Drawing in addition to those subjects previously studied. An introductory Computer Studies course was also introduced to this year group. 27 subjects were made available for pupils in the 4<sup>th</sup> and 5<sup>th</sup> years (Y10 and Y11) to GCE 'O' Level and CSE standards.

Drama was introduced into the 1<sup>st</sup> year timetable in 1984, when soccer was also made part of the PE curriculum in the senior part of school.

The significance of computer studies developed quickly from the introduction in 1982. By 1985, 90 pupils were studying computer studies in the 4<sup>th</sup> and 5<sup>th</sup> years. Control technology was established for 3<sup>rd</sup> and 4<sup>th</sup> years and micro-electronics was introduced at 2<sup>nd</sup> and 3<sup>rd</sup> year level.

The Education Reform Act of 1988 completely changed the curriculum and all aspects of testing and assessment. The National Curriculum which was introduced in 1988, set out prescribed programmes of study for all subjects and provided attainment targets to be met by pupils in each Key Stage. (Key Stage 3 = 11-14, Key Stage 4 = 14-16) This resulted in a major overhaul of all teaching schemes. Some well-known subjects, such as domestic science, disappeared to become known as 'food technology'. So, the school prospectus of 1998-99 reflects a very different curriculum on offer to that of 1983. Technology was a key feature and included: design technology in metal, wood, plastics, graphics, electronics, structures, food, textiles and IT. Although space had been found to locate a computer room, it became necessary to increase the capacity for IT, so a second network room for computer studies was needed by summer 1991.

The TVEI (Technical and Vocational Educational Initiative) was adopted in Lancashire in 1987, providing work experience for pupils in Year 10 for the first time. This was a parallel development to the National Curriculum which emphasised the importance of preparing young people for life and work.

During 1995-96 a new course – a GNVQ in Leisure and Tourism – was planned and RE was made compulsory for those in Year 10.

1986 heralded the demise of GCE 'O' level and CSE examinations. They were replaced by GCSE's and the standards achieved became of prime importance. The first GCSE courses were introduced for 4<sup>th</sup> years in September 1986, to be tested in 1988. 42%

### GCSE 5 or more subjects A-C grades

1990 – 30%    1991 – 49.4%    1992 – 50.3%    1993 – 50.3%    1994 – 51%

### A\* - C grades

1995 – 49.7%    1996 – 56%    1997 – 54%    1998 – 59%    1999 – 58%    2000 – 65%



of pupils gained 5 or more A-C grades in the first year of testing, which was more than twice the national average. By 1994, when the A\* grade was added, 51% achieved 5 or more A-C grades at GCSE. In 1992 Kenneth Clarke, the Education Secretary made provision for schools to be inspected through the Ofsted regime and in 1997, school performance tables were introduced by David Blunkett. GCSE's demanded a substantial amount of coursework to be undertaken in addition to the modular tests and tests taken at the end of Year 11. The school's policy was to encourage pupils to enter as many GCSE exams as they felt capable of attaining, to foster the highest levels of personal achievement. In 1997 all pupils were entered for at least 5 subjects. During this time, pupils were entered for co-ordinated science or separate sciences.

Educational changes continued to have a great impact on the everyday life of staff and pupils. In 2000, when the 'new' curriculum was updated and refined, ICT had an even greater focus across most areas of the curriculum. This update also provided for a minimum of 2 hours PE per week to encourage exercise and well-being. With the ongoing emphasis on sport, Balshaw's had no difficulty in meeting this requirement. It already met the standards. The PE department already offered gymnastics, football, basketball, hockey, netball, rugby, table tennis and badminton in 2006, when aerobics was added.

Vocational GCSE's were introduced in 2002, to be tested in 2004. In 2004 Psychology was offered as a study option for able and talented pupils, and the following year additional courses were offered through collaboration with Runshaw College, Preston College and Moorhey. These included Applied Engineering and Business Studies, NVQ in Beauty Therapy and a Motor Vehicles and Road Safety Certificate.

Throughout all the changes, considerable time and effort was given to the organisation of the timetable in order to accommodate the increased range of subjects. The school day ran from 8.55 am to 3.45 pm in 1983, with a break for lunch from 12.35 to 1.50 pm. By 1998, when minimum hours were set by the DfEE, the Balshaw's day ran from 8.45 am to 3.30 pm with a lunch break from 12.50 to 1.40. The length of lesson times was consistently under review. Some subject teachers preferred longer and double lesson periods so that practical and other work could be undertaken. Up to the summer of 1994 there were 8 periods of 35 minutes each day. In September 1994, this was changed to 6 lessons of 50 minutes. In 2006-07 consideration was given to the introduction of a 25 period week but no change was made. Lesson times remain as they were set for September 1994.

The publication of individual school's results within league tables caused much controversy, but the standards achieved by pupils at Balshaw's ensured that the school was well-placed both locally and nationally. The value added league tables for 2004 results placed Balshaw's 5<sup>th</sup> out of 113 schools within Lancashire, Wigan and Cumbria. In the autumn of 2004, the school featured on a CD Rom 'Parent Power' given with the Sunday Times, as it was ranked in the top 50 state schools without a sixth form. The consistently good standards of achievement were also

#### GCSE A\*-C grades in 5 or more subjects

2001 - 67%	2002 - 64.8%	2003 - 68%	2004 - 75%	2005 - 66%	2006 - 64%	2007 - 68.9%
2008 - 72%	2009 - 81.3%	2010 - 93%	2011 - 90.2%	2012 - 91.2%	2013 - 90.7%	

recognised by the DfEE in 2001 when the school received the Excellence Award. This provided £20,000 to be distributed to all staff for their part in making the school successful. The award was also received in 2002 after which it was discontinued.

It is clear that the percentage of pupils achieving the higher grades continues to increase over time. Much of this can be explained by improved teaching and learning throughout the school as well as the dedication of staff, pupils, parents and governors. However, since the Excellence in Schools White Paper of 1997, schools have been presented with challenging targets for the raising of standards. These were monitored by the local authority, Ofsted and later, school improvement partners. All had a part to play in the improving figures. Some may comment on the quality of the syllabus and the exams, but it is clearly evident that Balshaw's pupils and staff have always strived to achieve their best. The school's budget for examination entry fees continues to increase. In 2007, £61,650 was allocated for exam fees and by 2014 this had risen to £72,000. In recent years the focus has been on pupil achievement in maths and English. The percentage of pupils gaining 5 or more A\* - C including maths and English is reported alongside the overall GCSE grades.

Changes in the curriculum have continued to this day and arrangements for testing have also changed. Key Stage 3 testing was no longer compulsory after 2009 and GCSE courses have been made more rigorous through the removal of modular testing

#### GCSE 5 or more A\*-C including English and Maths

2007 - 61.8%	2008 - 55%	2009 - 65.2%	2010 - 65.6%	2011 - 69.4%	2012 - 65.4%
2013 - 70.9%					

and a reduction in the volume of coursework. In March 2007 the science department piloted a BTEC Applied Science course to run for 2 years to 2009. Since then Astronomy has been offered as an extra-curricular course for able and talented pupils in Year 9.

Throughout the entire period covered by this book, education theorists and politicians have had a significant impact on the daily life of the school. Pupils with additional needs are well-supported through a range of additional services and personnel employed to meet children's specific academic, social and behavioural needs. The 1993 Education Act included the SEN Code of Practice and the 'Every Child Matters' Children's Act of 2004 both had a considerable impact on the provision of services for children in the school.

Being a voluntary controlled Church of England High School, the Christian character and ethos of the school has always been of great importance. RE and PSHE make a significant contribution to the curriculum and the standards achieved are good.

Balshaw's pupils have always been able to enjoy a wide range of extra-curricular activities. Sport features strongly and is described in another chapter. Clubs run by staff at lunchtimes and after school attracted an 'Education Extra' Distinction award in 1998 and in 2002 the award was presented for the fifth time for 'outstanding extra-curricular activities'.



The 1992 Education Act, which made provision for Ofsted had a massive impact on all schools. Balshaw's first experience of an Ofsted inspection was in 1995. Inspectors were in school for a full week, from the 2<sup>nd</sup> – 6<sup>th</sup> October. Miss Jo Venn had taken up the headship in January of that year, already aware that the inspection would take place. The result of the inspection was that the school was judged to be in the outstanding category.

The inspection in October 2000 (31<sup>st</sup> October – 2<sup>nd</sup> November) was shorter and the school had less time to prepare. However, the overall judgement was that the school 'is a very effective school and the number of strengths far outweigh its weaknesses.'

#### Ofsted comments 2000

- Pupils' attitudes to learning and their behaviour are very good.
- Pupils achieve very good GCSE results.
- The school provides a very wide range of extra-curricular activities which are well supported by a large proportion of pupils.
- Pupils benefit from good quality teaching.
- The school benefits from good leadership from all those with management responsibilities.
- The school provides many opportunities for pupils to take positions of responsibility ..... and they respond very positively to these opportunities.
- *The poor quality of accommodation, especially for music and history, has an adverse impact on the quality of learning.*
- *Teaching time is lost at the start of lessons because the school does not provide time for pupils to move between lessons.*

As we know from the section on building, the Ofsted comments relating to the poor quality accommodation supported the school's continual pleas for capital funding to ameliorate the situation.

The 2000 report was clearly deemed to be excellent as in January 2002, Balshaw's was named in Ofsted's Annual Report of 2000-01 as 'a particularly successful school'.

The focus taken by Ofsted changed over time, as did the length of notice given, the nature of the inspection, the grading and the look of the report. So, when the school was inspected for a third time in June 2006 (14<sup>th</sup>-16<sup>th</sup>) the school was graded as 'a very good school with some outstanding features, namely the inspiring leadership provided by the headteacher, the palpable Christian ethos, the care, guidance and support given to the pupils and their personal development'.

#### Ofsted comments 2006

- Standards are high and achievement is good.
- All pupils benefit from the willingness of staff to 'go the extra mile'.
- Management is good throughout.
- The range of extra-curricular activities provided is outstanding.
- Most pupils enjoy their lessons and work hard.
- Pupils' personal development and well-being are excellent.
- Care, guidance and support are excellent.
- Teaching and learning are good overall and there are example of exemplary teaching.
- The school provides a good, rounded curriculum.

Three years passed before the school was inspected for the fourth time, in June 2009. This time the overall judgement was that 'Balshaw's is a very good school with outstanding features'.

#### Headline comments from Ofsted 2009

'Students' personal development and well-being are excellent as a result of the outstanding care, guidance and support they receive. Standards are rising steadily year-on-year, and the good teaching and curriculum provide an environment where students achieve well. Leadership and management are highly effective. Parents are extremely positive about the school. As one parent commented, 'This is an outstanding school with an excellent staff. They not only inspire and encourage students to strive for the best, but also support and develop them as individuals.'

Such high accolades are not easily achieved and it must be recognised that the ongoing success of the school is due to all who work and share in the life of the school. This includes teaching and support staff, governors and parents as well as pupils. The inspection which was expected in 2012 was deferred, as it was recognised that the school was continuing to maintain standards of achievement. The deferred inspection took place in September 2013 and was highly successful. The school was judged to be outstanding in each of the areas inspected: Achievement of pupils, quality of teaching, behaviour and safety of pupils and leadership and management.

#### Headline comments from Ofsted 2013

- Under the exceptional leadership of the headteacher, students and staff flourish at Balshaw's.
- Students make outstanding progress.
- Much of the teaching is outstanding - excellent lesson planning, highly effective questioning and very knowledgeable and enthusiastic teachers who use a rich variety of resources all combine to capture and hold students' interest.

As a result of regular changes to the Ofsted framework, the outstanding judgement is now extremely hard to achieve. It is therefore a fantastic achievement on the part of all who work in the school. So pleased was the school to have gained this accolade,



that a special celebratory meal was held for staff and governors. The event was held at Leyland Golf Club on 15<sup>th</sup> November 2013.



Diane Howarth, Marion Higgins, Gillian Wells, Sharon Elliott, Maxine Tetlow, Sarah Ferguson, Kate Bryant, Megan Brierley, Jane Purcell, Mo Whittam and Karen Bishop.



Jo Rutter, Sam Kell, Mark Wrennall, Louise Preston, Debbie Holden, Peter Fletcher, Caroline Molyneux, Jane Hayes and Lesley Smith.

The Sunday Times Top Schools List, published in November 2013, ranked Balshaw's eighteenth nationally, confirming the Ofsted judgement and re-affirming and recognising all the hard work and achievement of staff, pupils, parents and governors.

As a church school, each time the school receives a full Ofsted inspection, it is also inspected by church school inspectors. This inspection has variously been called a section 23, section 48 or SIAS inspection. The inspections carried out in 2000, 2006 and 2009 all recognised the school's strong Christian ethos and the very high standards of pupils' spiritual, moral, social and cultural development. Balshaw's is consistently recognised as an outstanding church school.

### Awards and other Recognitions

As can be seen from the previous chapters, Balshaw's has a long history of academic, sporting and cultural successes. Some, such as the Ofsted reports and the Education Extra Distinction Award, have already been mentioned. The school has high expectations of its pupils and staff, not only for academic achievement, but for 'achievement across the board'. The school rules set out in the 1983-84 prospectus includes; 'You share responsibility for the reputation of the school, sound conduct and good manners and consideration for others'. When it became common for schools to develop a mission statement, the school formulated the following:

'To aim at excellence in demonstrating the Christian faith, engendering pride and unity throughout all our work connected with the school.'



The full mission statement is provided in the school prospectus and on the website [www.balshaws.lancs.sch.uk](http://www.balshaws.lancs.sch.uk)

The concept of 'aiming at excellence' has never been restricted to the achievement of pupils. The school sets itself challenging academic targets and it takes pride in the way in which all those who work within the school are encouraged to play their part. A quick glance at the school's headed notepaper will show the range of awards it has received in recent years. The only problem is that it has achieved too many to be reflected on one piece of paper! One logo which has been present since 1996 is that of 'Investors in People' (IIP). This was first gained 6 months after the initial commitment in 1996. By 2005 the school had held the IIP status for 10 years. It is now one of very few schools to hold the gold standard of this award, reflecting the focus on developing and including staff both personally and for the good of the school.

The 'Healthy Schools' Quality Mark and the 'Artsmark' Award were gained in 2004. David Borrow MP visited the school in 2004 to present the Artsmark award. Both awards were re-assessed and maintained in 2007. The way in which the school managed its finances and other 'official areas' was also recognised in 2007 when it received FMS accreditation.



2007 also saw the beginning of the school's work on sustainability and thus, the gaining of Eco-School status. The silver award was presented in March 2009. Eco days and special events have featured regularly ever since.

In January 2009 Balshaw's became the first secondary school in Lancashire to receive the Race Equality Mark.

In January 2010 the school applied for a diocesan 'Church School Distinctiveness Award' using the development of the Memorial Garden as the main theme. This was awarded in Blackburn Cathedral during an Education Sunday service in February 2011.

Fairtrade status was also achieved in 2010 and was presented by Right Rev. John Goddard, the Bishop of Burnley in July. The school held its first Fairtrade event in July 2010. Since then a special event has been arranged during each summer term. In 2013 pupils presented a 'Fairtrade fashion show' which was sponsored and attended by former pupil, Michael Douglas. Michael is now a well-known hairdresser, working with celebrities and seen on TV.

A further example of the school's commitment to the pursuit of excellence can be seen in the way in which various departments seek to gain recognition within local and national educational spheres. In June 2013, the school was successful in their bid to the Sinnott Fellowship. This bid, made by the science department, provided £7,200 to work with primary schools and Shaftesbury House on science projects.

### A Change in Status

The school's status as an 11-16 High School was created when Runshaw College was opened in 1974 and the school lost its sixth form. However, the 1997 'Excellence in Schools' white paper established specialist schools in England. On January 28<sup>th</sup> 2003, a meeting was held to consider the possibility of the school's application for 'Specialist College Status'. The intention was that the application should be made in March 2004 as a Maths and Technology College. If successful, the school would attract additional funding: a capital grant of £150,000 to be spent on accommodation and equipment and a grant of up to £100,000 for each of the first 4 years. The school was required to raise £50,000 from sponsors, of which one, the Balshaw's Association, pledged £14,000. It was noted that no money resulted directly from this meeting, but it did initiate a huge amount of work to be undertaken by a variety of staff in order to prepare the bid. By July 2003, a draft bid had been submitted and about half of the necessary sponsorship had been pledged. The governors' minutes for September show that a pledge had been received from the Specialist Colleges Partnership Fund for the outstanding money needed (£23,700) and the full bid was submitted the following month.

In January 2004 the school was informed that the bid had failed, so the decision was made to re-submit the bid in March, this time removing maths from the title. This bid was successful! It was confirmed in July that the school was to receive an initial £100,000 grant, the £50,000 sponsorship and an additional £129 per pupil per year for the next 4 years. The main sponsors were Balshaw's Association and Schwann Pizza Company. Jo Venn explained, "The focus for the additional funding will enable the school to build on its strengths to provide excellence in education today and the engineers of tomorrow."

The launch day, 28<sup>th</sup> April 2005, was a major event in the school's calendar. Pupils built and flew a plane with the support of British Aerospace. Feature articles appeared in the local press (Leyland Guardian etc) and the whole day was one big party.

The focus on all aspects of engineering and design has had a significant impact on the work within school and the way in which it supports teaching and learning within the local community and wider area. In 2006, an £11,000 engineering across the school fund provided departments such as MFL and RE with additional modern resources. £2,500 was given to MFL to purchase interactive white boards and the RE department received £1,500 to buy a projector, PC and screen. On 14<sup>th</sup> July 2006 all of the year 7 pupils were involved in an Engineering Challenge day at BAE Systems, Warton. Status funding was also used to finance a Year 8 trip to Paris to investigate the engineering, design and construction of the Eiffel Tower.

In September 2008, Balshaw's was invited to become a STEM (Science, Technology, Engineering and Maths) Pathfinder School – one of only 3 of 63 engineering status schools. This government initiative was designed to encourage schools to find exciting and innovative ways to develop these subjects. An initial grant of £10,000 was given to develop what was already going on in the school and to enable it to share expertise with other schools. Dave Melling, the Director of Engineering, took responsibility for the project. One of the first activities was the establishment of a



STEM club. The inaugural project to design and build an off-road kart was highly successful.



The finished kart

The school continues to work hard on all aspects of STEM, successfully running courses for teachers and pupils from local schools and supporting engineering, maths and science projects within South Ribble and the wider community.

## The Governors

It is very fortunate that the school has been able to attract and retain many dedicated

and loyal governors over the years. The role of governors has changed considerably since 1982. The Education Act of 1980 stated that at least two parents should be elected to the governing body. The legislation of 1986 handed greater responsibilities to governors, ensuring that staff and parents were represented. Governors had greater control over financial and other decisions and they had to present an annual report to parents. (Now ceased)

### Chair of Governors since 1982

Mrs. R. B. Kelley ( -1982)

Rev. K. Broadhurst (1982-1987)

W. M. Jackson (1987-1989)

D. E. Robinson (1989-1994)

Rev. K. Horsfall (1994-1996)

Mr. J. G. Demack (1996-1997)

Mr. Mike Otter (1997-2005)

Mr. Tim Callaghan (2005-present)

It is the governors who have made the final decisions about the major building programmes undertaken since 2003 and they have also ensured that the school's ever-growing budget is spent wisely and to the best effect. Governors have also made significant decisions regarding possible changes in the school's status. The governors' annual report to parents for 1994-95 states that the governors voted unanimously against the option to go Grant Maintained. In June 2001 discussions were held with the diocese about the possibility of moving from voluntary controlled to voluntary aided status. However, this was withdrawn in June 2002 as the change would have had a negative impact on the school's ability to get capital funding for the much-needed building programme. The LEA statement was that, 'they would not look favourably on the need to modernise the ROSLA block and temporary classrooms if there was any chance of voluntary aided status'. Governors have also been responsible, through the various committees, for the health and safety of the premises, the worship life of the school and, of course, for the recruitment of staff. More recently, governors have had to consider the possibility of moving to Academy status. Although governors have researched and discussed the wisdom of such a move, minutes show that, despite considerable time being taken to gain advice and knowledge, it is not deemed wise or necessary to move towards Academy status at this time.

As a church school, Balshaw's has a number of foundation or church governors. Their role, in addition to those of all governors, is to ensure that the foundation trust is maintained and church school issues are well-represented. So, when the governing body was 'reconstructed' in September 2005 it consisted of: 7 elected parents, 3 LEA governors, 2 community members, 5 foundation members (taken from St. Andrew's and St. Ambrose congregations), the headteacher and 2 staff members. As governors are elected for a period of 4 years, there have naturally been many changes of personnel since 1982. The Chair of Governors fulfils a very important role and is a familiar face around the school. One Chair, Mike Otter was a finalist in the Edexcel Outstanding Governor Award 2003, having been a governor for 12 years and Chair of Governors from 1997.



A plaque and cross in the entrance hall commemorates Bill Jackson (Chair 1987-89) who died in 1994.

Other issues with which the governing

body has had to make decisions in recent years include: the approval of the many educational visits undertaken by the school, the change of status and the number of car parking spaces available! Changes in teachers' pay and conditions and other employment issues brought about by various governments have also created significant problems for governors (working with the headteacher and senior leaders). The remodelling of the workforce, which saw the demise of management points and the introduction of TLR's for teachers in late 2005, is an example of such issues. When one considers that the school budget now stands at almost £5,000,000 (£4,214,000 in 2009-10), the size of the responsibility held by the governing body, working with the headteacher and senior management team, cannot be over-estimated.

Governors are elected for a term of four years. The governing body for 2013-14 is listed below.

#### Governing Body 2013

Mr. T. Callaghan* (Chair)	Mr. R. K. Woodcock (Vice Chair)	Miss J. Venn (Headteacher)
Mr. K. Anthony*	Dr. A. Cottam	Mrs. A. Crompton*
Mrs. S. Elliott	Mr. D. Gardner	Rev. D. Gibb
Mrs. E. Goadby	Mrs. J. Hayes	Mr. G. Jennings
Mrs. K. Lunt	Mr. N. Maher	Mr. D. G. Mather*
Mr. P. Midgley *	Mrs. J. Mote	Mr. M. Otter
Mr. I. Partington *	Mr. A. Quinn	Mrs. K. Williams*
Mr. B. Golding (Clerk)		

\*denotes an ex-pupil / Old Balshavian

Mike Otter recalls:

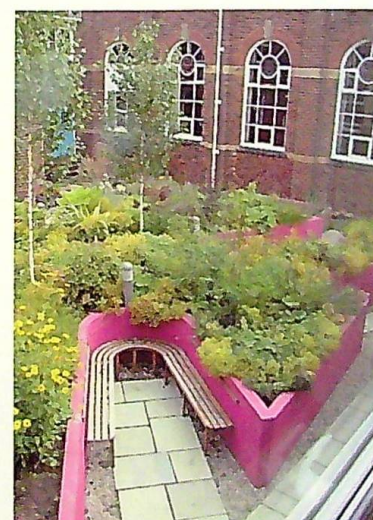
I have served as a Governor at the school for the past 22 years (including 8 of those as Chair of Governors) from 1991 up to the present day and have, at some time, had the privilege to sit on or chair all the committees, working with some excellent Governors.

#### Balshaw's Association

In 1987 the PTA was renamed to become the 'Balshaw's Association'. Since then, members have worked tirelessly to provide much-needed financial and practical support for the school. The Association holds a variety of social and fund-raising events throughout the year (quiz nights, auction of promises etc.) and it has been instrumental in raising large sums of money for specific projects such as the hall windows and the minibus, mentioned in previous chapters.

On 28<sup>th</sup> February 1998, David Borrow MP launched the school's Millennium Appeal at a Ceilidh organised by the Balshaw's Association. The aim was to raise £20,000 by the year 2000, for use by all departments. The Governors' Annual Report to Parents of 1998-99 states that £18,000 had been raised. The target was reached and all pupils benefitted from the way in which the money was used.

The gates and railings, made at Wymott Prison and installed in 2006, were funded by Balshaw's Association. The gates and railings were constructed at a cost of £25,000 using a 1930's design to reflect the original building.



Following the phased rebuilding programme, a suggestion was made to create a memorial garden, possibly in the quadrangle. The idea became firm in 2006, following the death of a pupil, Ryan Masterman, in April of that year. Plans were developed by Tim Callaghan, the Chair of Governors, and events were held to raise money for the garden. The brickwork was estimated to cost £7,700. In autumn 2008 raised beds were built in the quadrangle. A crane was needed to lift the soil over the building into the quad, so the operation was timed for the October half term. Balshaw's Association made significant efforts to raise money for this project. The garden was dedicated at the first Memorial Service held on 30<sup>th</sup> November 2009. The service is now an established part of the school

calendar and it is valued and attended by members of the school and local community.

Since then, the Association has raised funds to replace the original mini bus in 2010. The current project, to provide an all-weather, multi-purpose outdoor games facility (M.U.G.A.), is being supported to the sum of £40,000 by the Balshaw's Association. Such amounts take a considerable time, effort and enthusiasm to raise.

Parental support has taken many forms and is very much appreciated by all members of the school family. Occasionally the strength of support is recognised officially. This was the case in 2001 when Mrs. Merrill was a finalist in the Edexcel Awards for Outstanding Parental contribution.

Balshaw's Association is also indebted to Runshaw College. They provide printing for the Spring Fair and annual Parents' Calendar as well as the Transform Magazine.



Tim Callaghan (Chair of Governors and Chair of Balshaw's Association) describes the work of Balshaw's Association:

*Balshaw's Association has become a strong, proactive group who have consistently both supported school events and raised vital funds for school projects. Members are both parents of current pupils and parents of those who have left-known as 'lififers'.*

*The group has regularly raised up to £15,000 per year through social and fund-raising activities. These have included quiz nights, treasure hunts, a St. Patrick's Night Ceilidh, Promises Auctions and Christmas Bingo to name but a few! The money raised has either fully or partly funded school projects. Over the years, the group has paid for the running of the school minibus and bought a new one. Other projects have included renewing the school gates, sound and lighting for the hall and money towards the gaining of engineering status and the new resources library. Our latest project is to make a significant contribution to the new multi-purpose games facility.*

*The Association is indebted to the support received from Miss Venn and the school staff, as well as long-standing committee members such as Sue Halsall (treasurer) and Ann Brown (secretary). Over the years Balshaw's Association has made a real difference to the everyday experience of pupils at Balshaw's.*

#### **Balshaw's Foundation**

The Balshaw's Foundation meets twice a year. The Trustees, drawn from the school, the diocese, parish, local and county councillors, are responsible for the administration of funds and the distribution of grants and prizes presented at Speech Night. (Lord Robens and L and B) The Trustees also provide financial assistance and beneficiaries for pupils and former pupils who wish to pursue their education through travel etc. They also provide small grants to 5 local primary schools.

Trustees September 2013: Dr. A. Hanson, Mrs. M. Griffiths, Mr. T. Callaghan, Mr. P. Banks, Mr. M. Heaton, Councillor G. Lewis, Mrs. C. Powell, Mr. M. Barrett, Rev. J. Fearnley, Councillor P. Hammon, Mrs. N. Websdell, County Councillor M. Otter.

#### **School Life**

The daily routine of life in school may appear to have changed little in the past thirty years. Pupils wear a very similar same uniform, though prices have changed somewhat. The girls' uniform was changed from navy blue to black in September 1995, when blazers were also introduced. In 1983, the prospectus stated that the school uniform could be obtained from 'Ken's' of 248 Leyland Lane and from 'Anne's' at 370 Leyland Lane. The cost of a blazer was £15.50 and the badge cost £1.40. Today, blazers are bought from a wide range of stores and shirts, skirts etc can be sourced at Tesco and other similar outlets. In 1983 pupils were expected to provide their own maths instruments and writing implements and advice was given on which atlas, dictionary and Bible to buy. The current uniform list does, however, allow girls to wear trousers (plain black uniform trousers with the school logo). Girls campaigned for the wearing of trousers for some time before 2001, when permission was finally given. However, it did not become common practice until the following year. From September 2013, the school tie became clip-on style. The school has always placed considerable emphasis and importance upon the upkeep of standards of dress and discipline. As the Governors' Annual Report to Parents 1995-96 stated. "The maintenance of behaviour, uniform and discipline is paramount." The current prospectus describes the school's ABC - appearance, behaviour and commitment, stating that failure to abide by the uniform rules may result in a detention. Detentions are on Thursdays for an hour after school. In 1983 the detention sessions were on Tuesdays and Thursdays from 3.45 to 4.35 pm. 7.30 am and Saturday morning detentions have also been used.

The storage of pupils' belongings has been a constant problem. Steel lockers were provided in 1990 when an initial 380 were ordered. Paid for by the Balshaw's Association, it was the intention that each pupil be provided with a locker by the end of July 1991.

Corridor showing some of the lockers provided for pupil use.

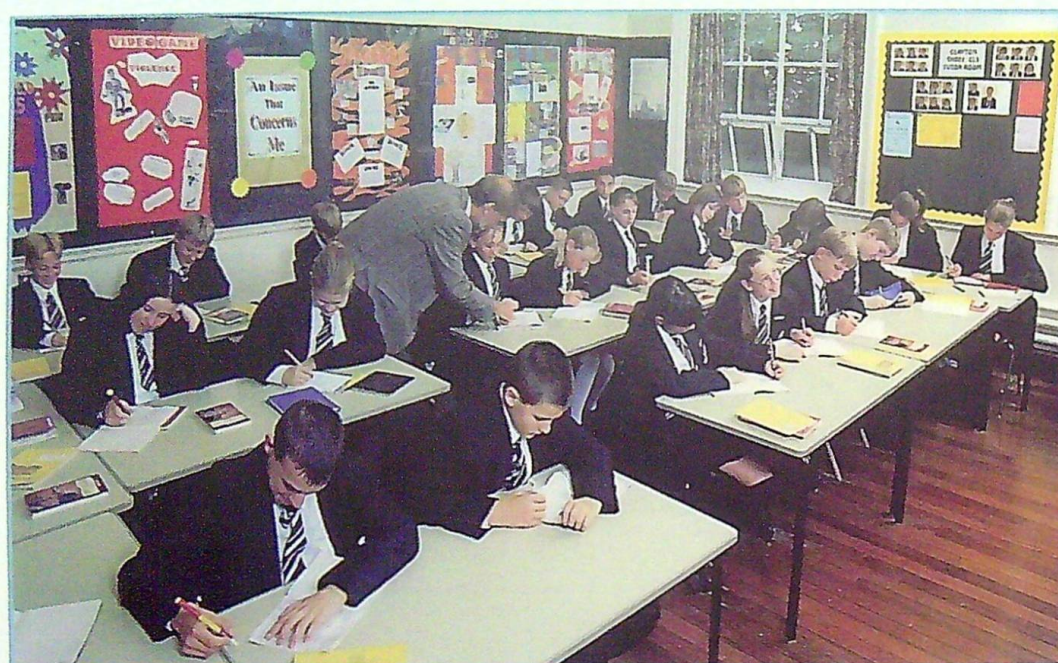


Until 1995, pupils were able to leave the school grounds during lunch breaks. However, from January 1995, all had to remain on the school premises.

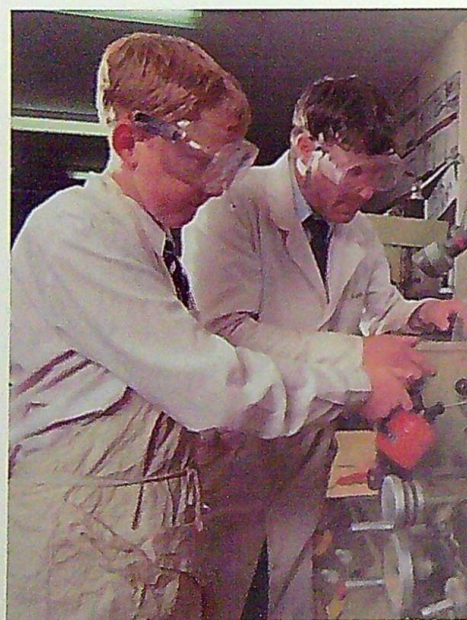
Reports, sometimes dreaded by the pupils themselves, were updated in 2003 when computer generation was first introduced. This altered the way in which teachers wrote the reports and provided more detailed information for pupils and their parents.

Teaching and learning has changed dramatically over the years but lessons are still taught within specialised classrooms and homework is a consistent feature. The photographs illustrate a variety of lessons and activities.

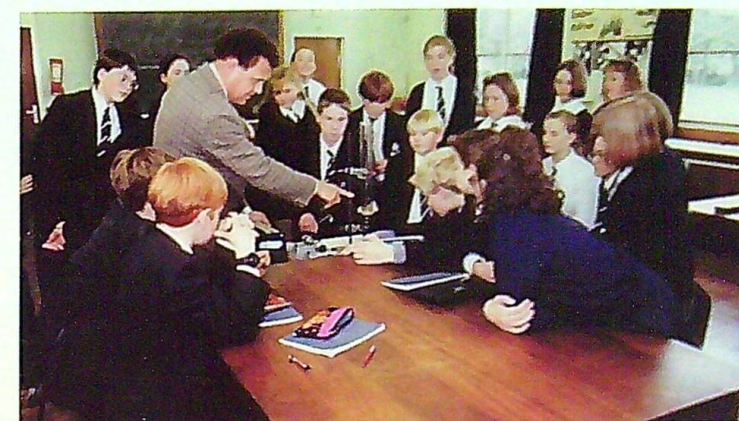
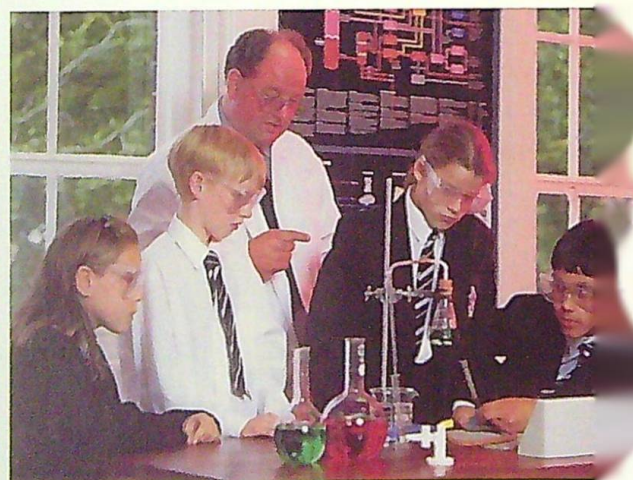




English with Dave Ellacott about 2000 in Clayton 3 Tutor Room.



Left: Dave Crabtree in Technology: Resistant Materials about 2000. Below: Chemistry with Dave Robertson



Physics with Keith Woodcock 1993

IT with Phil Banks about 1999.



### Educational Visits

Educational visits of various types punctuate the school year. In 1982, these included overseas visits to France and Holland and skiing in Italy. The February half term skiing trips were clearly popular, using venues in Austria throughout the 1980's and 1990's.





The ski trip to Bischofen, Austria April 2009 was the first for almost 10 years.

The site supervisor, Bernie Temmen, led some of these trips. Another regular trip at this time was the annual football and rugby tour to Holland which usually took place during the Easter holidays. (See Sport at Balshaw's for further information.)

In 1991, the first pupil exchange with the twinned town of Schleswig-Flensburg took place. Pupils then visited Schleswig-Flensburg in 1993, giving them an opportunity to practise German. Trips to Normandy and to World War 1 battlefields in Belgium and France have also taken place regularly. In 1993 a group of 3<sup>rd</sup> years (Y9) went to Prior House, Richmond for an outdoor activities week. The following year the year group experienced water sports activities in the south of France. The water sports activities proved very popular, so further trips were made to venues in Spain and France.



1994 Water Sports Activity visit to Spain:

Martin Barrett (teacher), Michelle Kordowski, Sally Hurst, Vicky Llevo, Christopher Challenger, Matthew Bickerdike, Ian McKenna, Paul McGinty, Christopher Hayes, Alison Slater, Kristopher Johnson.

In 1998 the same outdoor pursuits programme saw Y8 pupils travelling to Spain whilst Y9 children went to the French Alps. In 2001 educational visits to Austria, Holland, the French Alps, the south of France and the Isle of Wight were approved by governors, organised and run by staff and enjoyed by students.

Martin Barrett explains how the adventure programme came about:

*With the arrival of Dave Croft as Deputy Headteacher in September 1987, there evolved a shared vision with Dave Childs (Head of Geography), to create a whole school programme of outdoor and adventure activities coupled with residential experiences. Initial stages began with Year 11 bivvying in plastic bags at Sprinkling Tarn, to take in Scarfell Pike. Equipment was built up from fund-raising activities and support from local firms. Senior pupils were given the opportunity for night hikes and camping high in the Langdales, as well as rock climbing both in local quarries and the Lakes. These early days also saw the introduction of orienteering by Bernie Temmen, the Site Supervisor, who used his experience from his army days. Early residentials included the use of Prior House for Year 9 to experience climbing, caving and canoeing.*

*1992 saw the bold decision to venture further afield. A double decker bus full of Year 8 boys and girls set off for water sports activities at Marseillan Plage in the South of France. Unfortunately this transpired to be one of the wettest, coldest weeks of the recent summers. Even staff resorted to wearing bin bags for protection from the torrential rain! On the return journey, a farmer's blockade at the Channel Ports resulted in the group spending more than 24 hours on the coach. Yet, despite this hiccup in the proceedings, the adventure had certainly 'whetted appetites' for more!*

*In subsequent years the water sports were relocated for Year 8 students to La Fosca on the Costa Brava, to experience wind-surfing, topper and catamaran sailing, canoeing and snorkelling. Emerging competitions included 'tidy tent', cabaret and top*



performers of the week. A parallel trip for Year 9 saw them visit Edale for caving, climbing, abseiling and canoeing.

Further developments saw weekend trips to the Lakes to hone climbing, orienteering, sailing and canoeing skills and to build upon the experiences for those in Years 10 and 11. The lure of the Alps replaced Edale for Year 9 pupils. The 'Alpine Action' trip, led by Dave Childs, was based at Plan Peisey near Les Arcs. It brought additional exciting challenges with the inclusion of white-water rafting, gorge walking and mountain biking.

Growth was phenomenal with most trips being regularly over-subscribed. Accompanying staff were expected to participate in weekend trips to earn their places as part of the summer term trips. Orienteering teams under Mr. Temmen and Mrs. Lowe gained national recognition in numerous events.

For Year 7 students, a residential outdoor experience was organised within the UK: the Lake District, Cornwall, Mid-Wales, Devon and the Isle of Wight.

So often, after these trips, one would note a 'knowing' look, smile or comment between staff and students, reflecting the excitement and experiences encountered and forging mutually respectful relationships. For many, the trips engendered a real appreciation of the outdoors, and for some, they served as a catalyst to their career choice within outdoor education and development. There is no doubt that these were halcyon days in terms of visits and outdoor activities, creating memories long cherished by all those involved.

One educational visit which is currently very popular is the Science/MFL trip to Paris during the February half term. This Y11 visit first ran in 2007. Since then the duration has been extended and the number of places increased.



Year 11's outside the Louvre on the 2013 Science/MFL/Maths visit to Paris.

Although educational visits can take staff and pupils into Europe, the vast majority of visits are day trips. These have included a wide range of museums and places of historical and geographical interest. Some involve an overnight stay. One visit which is now very popular is the sleep-over in a museum-Birmingham and others have been used.

One unusual visit was made in March 2010. A grant enabled a group of pupils studying astronomy to go on a Northern Lights trip, flying from Leeds/Bradford airport to see the natural wonder.

#### Visitors

The school has hosted a number of visitors from many walks of life.

Kenneth Clarke MP visited the school during the national election campaign of 1992. He was the Education Secretary responsible for the introduction of Ofsted. On 1<sup>st</sup> December 2000, the Right Honourable William Hague MP and Lord Sebastian Coe visited, together with the local MP, David Borrow. Lord Coe was clearly impressed by the school's sporting achievements as he commented, "This is a very impressive set of sporting achievements". On 9<sup>th</sup> February 2007, Amir Khan visited the school. The Olympic silver medallist boxer talked to pupils about his education in Bolton and participated in a weekly circuit-training session. In April 2010, Dr. Savory (DCSF) visited the science department, stating that the department provided, "One of the richest spectrums of science I've ever seen".

On 14<sup>th</sup> December 2012 the school hosted BBC Radio 4's Any Questions? programme, hosted by Jonathan Dimbleby. The panel was made up of Camila Batmanghelidjh, Alistair Campbell, Tim Montgomerie and Mark Littlewood. The application to host the programme was made in 2007 when the school was celebrating its 225<sup>th</sup> anniversary. However, the long wait was worthwhile and the audience thoroughly enjoyed their participation.

In October 2013 the school welcomed a brief visit from the newly appointed Bishop of Blackburn, the Right Reverend Julian Henderson. Although the visit was only short, it provided the opportunity for various members of the school and wider Christian community to meet and pray with the Bishop.

BBC Radio Lancashire has become used to contacting Balshaw's to gain views on items of topical educational interest. Outside broadcast vans can often be seen in the drive, together with presenters such as Alison Butterworth.

Comedian and former TV host Jim Bowen was a guest in October 2006 when he entertained a large audience for 'An Evening with Jim Bowen'. Other notable visitors are of course, those who present prizes at Speech Night. (See appendix)

The school has welcomed visits from many within the educational sphere. Teachers and headteachers, assessors, moderators and advisors visit regularly both to give and receive support and advice from those who work in school. Members of local government and the education committee also visit. Such visits are too numerous to mention. However, one group of visiting teachers travelled from Hong Kong. In the spring of 2010, the diocese hosted a group of teachers from Hong Kong as they were studying how church schools operate. Balshaw's was asked to host the group in



school. The school has also hosted visitors, such as an American principal and a teacher from Japan as well as Bishops from other countries.

### Speech Nights



1991 Speech Night. Dr. Catherine Bell (old Balshavian and Robens prize winner) presents a prize to Anne Woodcock. Headteacher Paul Ingram, Chair of Governors Dennis Robinson. Staff include: Veronica Gambling, Geoff Aston, Pam Carson, Chris Snell, Margaret Hodgson, Julie Nolan, Margaret Jenkins, and Anne Hoolahan. Governors include: Rev. Keith Horsfall, Chris Burrows, John McCallum, Margaret Dent.

Speech nights, always a key event on the school's calendar, have also brought a number of notable visitors to the school. Normally taking place in November, the evening celebrates the successes of individual pupils and the collective success of the school. The 1981 event was postponed to allow Lord Robens to present the prizes on 7<sup>th</sup> January 1982. The first Lord Robens Prize was awarded in 1966 to May Griffiths (nee Butler). May returned to Balshaw's in 1996 as a Teaching Assistant and retired in October 2013. The Lower School Awards Afternoon was introduced in 1995. Younger pupils receive certificates and awards which recognise their efforts, abilities and contribution to the life of the school presented by guest speakers. These speakers are usually from local feeder primary schools.

THE LORD ROBENS PRIZE	
1966	MAY BUTLER
1967	RALPH ANTHONY HOPE
1968	KATHLEEN ELIZABETH RATCLIFFE
1969	CATHERINE ELIZABETH DORCAS HOWE
1970	MARGARET FOWLER
1971	PHILIP BARR
1972	JOHN ROBERT MORRIS
1973	JANICE HELENA DAWSON
1974	MICHAEL DAVID COCKER
1975	HEATHER WILSON
1976	ELISABETH ANNE STANGER
1977	TIMOTHY JOHN DAVIS
1978	PAMELA JEAN BROWN
1979	MICHAEL JULIAN ROBINSON
1980	DOROTHY MARGARET MARSDEN
1981	SUSAN HODGKINSON
1982	ANDREW JAMES ROXBOTTOM
1983	KATHARINE LOUISE WILSON
1984	LESLEY ANN GIFFORD
1985	LINDSEY CLARE MELLING
1986	DAVID PETER LANE
1987	JASON H. T. WILLIAMS
1988	CATHERINE JANE DENNIS
1989	STUART MICHAEL GANNON
1990	LUCY JANE ELLACOTT
1991	NICHOLAS JOHN ROUTE
1992	KATHERINE ELIZABETH SKEATE
1993	RACHEL CHRISTINA JACKSON
1994	ANNE JAYNE LOUISE WOODCOCK
1995	KATHERINE ALEXANDRA HORNE
1996	ROBERT MATTHEW WILLIAM CATHEY
1997	ALISON SLATER
1998	CHRISTOPH IMMO ERNST LUSCHIN
1999	JEANNINE ELIZABETH HORNE
2000	REBECCA ELIZABETH LEWIS
2001	GEMMA MICHELLE POUND

THE LORD ROBENS PRIZE	
2002	AMI FRÖHLICH
2003	ADAM EDWARD THOMPSON
2004	HELEN VICTORIA MORRIS
2005	KIN MENG (JACKY) CHEONG
2006	PAUL JEFFERSON
2007	JONATHAN ALEXANDER MORRIS
2008	MICHA CHRISTY WAITE
2009	ADAM JAMES MULKERN
2010	NAOMI AMBER SYKES
2011	ASHLEY SMITH
2012	KATIE FRANCES ROTHERAM

The Lord Robens Prize display boards 1966-2012.

In 1990, the John Stanning Memorial Trust reformed the prize to become an exhibition prize for a former pupil giving financial support for studies in higher education. Martin Rimmer was the first recipient of the renewed award.

THE JOHN STANNING EXHIBITION	
1991	ELIZABETH ANNE BUTCHER
1992	MARTIN JOHN RIMMER
1993	STUART MICHAEL GANNON
1994	SARAH TURNER
1995	DAVID JAMES INNERDALE
1996	GARREN PHILIP HAMER
1997	ROBERT BAGOT KNOWLES
1998	ANNE JAYNE LOUISE WOODCOCK
1999	KATHERINE ALEXANDRA HORNE
2000	KATIE ALEXANDRA RHODES
2001	REBECCA JANE WYNN
2002	IAN DAVID BOND
2003	JAMES CROMPTON
2004	STUART MARK SENTANCE
2005	HELEN JAYNE TINSLEY
2006	ANDREW JAMES HARDMAN
2007	HARRIET REBECCA LOWTHER
2008	HAYLEY KATHERINE SUSAN DIXON
2009	SEVERLEY JANE AUTY
2010	PETER (TAT DAT) TRAN
2011	JOSHUA JAMES HALSTEAD
2012	MICHA CHRISTY WAITE
2013	DANIEL FLOWMAN
2014	CHARLOTTE LOUISE SALISBURY



The L and B Prize winners  
listed from 1984-2012.

THE L & B PRIZE	
1984	GRAHAM DANIEL HANCOCK
1985	NARAYAN IYENGAR
1986	CAROLYN SUSAN RICHARDS
1987	KYAW KHINE LINN
1988	HELENA VICTORIA SCURR
1989	RACHEL SARAH GROUNDS
1990	DANIEL JOHNATHAN PARK
1991	DAVID JAMES INNERDALE
1992	NICOLA JUDITH WELCH
1993	SIMON DAVID ELLACOTT
1994	STUART JOHN MCCALLUM
1995	NICHOLAS KORDOWSKI
1996	ANTHONY PETER FIWEK
1997	REBECCA JANE WYNN
1998	GEMMA DALTON
1999	JOHN KEITH HOLMES
2000	TOM DALTON BIDWELL
2001	KAREN LEANNE SACH
2002	SAMANTHA LOUISE CARR
2003	KATIE ROSE CARPENTER
2004	HELEN GRACE TOMLINSON
2005	CATHERINE JANE EAGLE
2006	REBECCA JANE HALSALL
2007	PHILIP WYNNIE
2008	SHERRIE JONES
2009	ANDREW CHARLES HOLLAND
2010	CHARLOTTE LOUISE SALISBURY
2011	ANDREW BARRON
2012	LAURA JANE WADE

Speakers have included former pupils such as Tom Bidwell, Clarke Carlisle and Phil Jones. A full list of speakers can be found in the appendix.

As can be seen by the photograph below, the setting for Speech Nights has changed little over the past 30 years.



Speech Night 2013: (from left) Head Boy Robert Armstrong, governors Kerry Lunt and Nick Maher, Assistant Headteacher Angela Wilson, speaker Anu Ojha, Chair of Governors Tim Callaghan, Headteacher Jo Venn, governors Mike Otter, Keith Woodcock, Deputy Headteacher Jonathan Morgan and Head Girl Jessica Pearson.

### Drama and Music

Dramatic productions of various kinds have been key features of school life. A drama club was formed in 1982 and pupils and staff have participated, both as actors and backstage ever since. The productions, which form an integral part of pupils' drama GCSE courses, have been directed by the heads of drama, Julia Croft and Mo Whittam. They are enjoyed and remembered by many students and staff as well as proud parents. Videos, photographs and DVD's were made of most of the performances.

Year	Title
1982	"Smike"
Mar 1983	"Dracula Spectacular"
Mar 1984	"Johnnie Salter" by pupils
Nov 1984	"Happiest Days of Your Life" by staff
1989	"Dazzle"
Mar 1991	"Man of Steel"
1992	"Sheik, Rattle and Roll"
1993	"Roman Invasion of Ramsbottom"
1994	"Bats"
1995	"No Ill Feeling"
1996	"Henry"
1999	"How the West was Warped"
Mar 2001	"Heroes" by T. Tuck
2002	"A Midsummer Night's Dream"
Apr 2003	"Macbeth"
Mar 2004	"Our Day Out" by W. Russell
2006	"Romeo and Juliet"
Apr 2008	"Willow Blues"
Mar 2010	"Totally Over You"
Mar 2011	"Grease"
Mar 2013	"Annie"

Lower school productions, such as 'Ernie's Incredible Hallucinations', provide the opportunity for younger children to participate in drama.



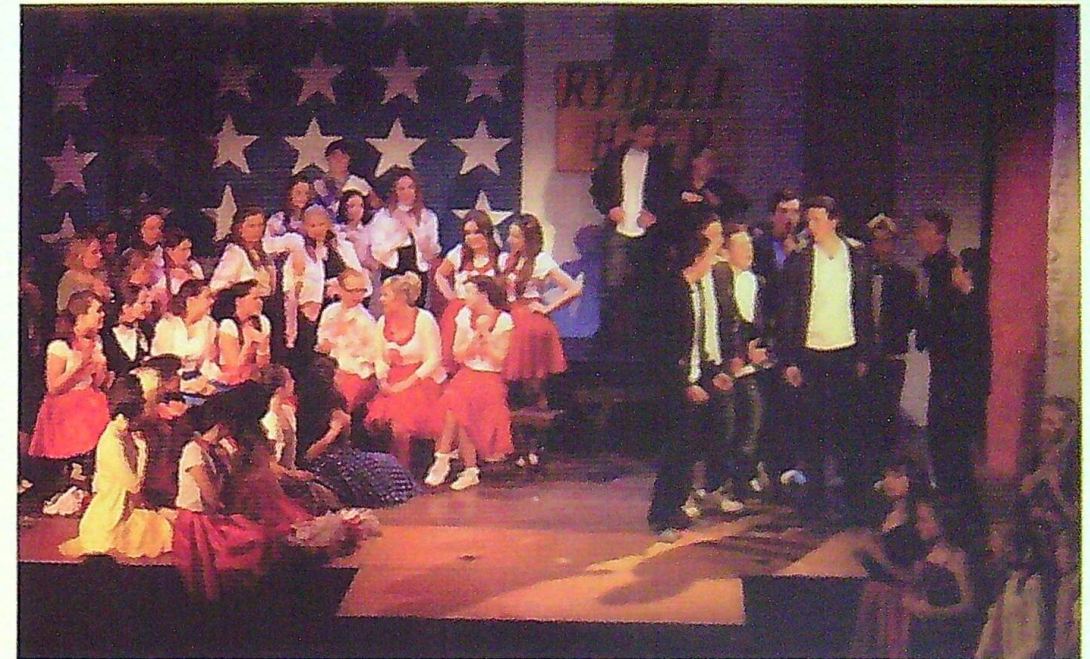


A scene from "Happiest Days of Your Life" the staff production of 1984 featuring Dave Childs, Keith Klemm, Keith Smith, Jim Saunders and others.

The cast of 'Romeo and Juliet' (2006) was interviewed by BBC radio and they also made a short film for the BBC Shakespeare website. The school has taken part regularly in the Shakespeare School festivals held at the Charter Theatre in Preston. In 2011 they performed "A Midsummer Night's Dream" to considerable acclaim, and in 2012 the play chosen was "Macbeth". Pupils not only act, but design costumes and direct the sound and lighting.



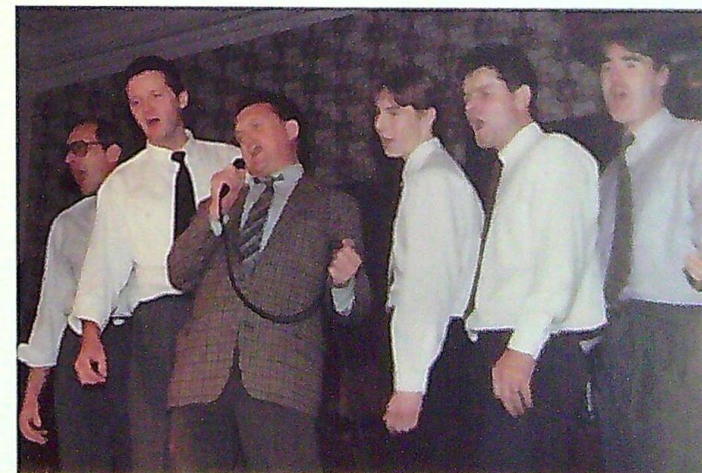
The cast of 'A Midsummer Night's Dream' for the Shakespeare School Festival.



'Grease' March 2011

In 1993, the deputy headteacher Dave Croft, introduced the idea of school karaokes. These were performed at Christmas by staff and pupils and created much hilarity for all concerned!

A karaoke performance from 1993 featuring Jim Saunders, Chris Snell, Keith Woodcock, Nathan Braithwaite, Dave Croft and Steve Hodgson.





The performance of music also features prominently throughout the year. Concerts in which pupils sing and play a wide variety of instruments collectively and individually, reflect their musical talents and abilities.

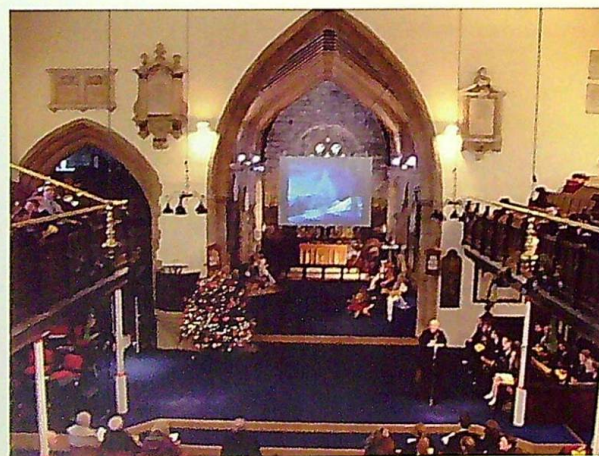


Events such as the recently introduced 'Battle of the Bands' demonstrate the breadth and range of music now studied at school. The services held at Christmas and Easter in St. Andrew's Church have also benefitted from the musical and dramatic talents of staff and pupils over the years.

2013 saw the school's first professionally recorded music CD being made. This includes performances from the staff choir as well as solo and group performances from a wide range of bands and singing groups.

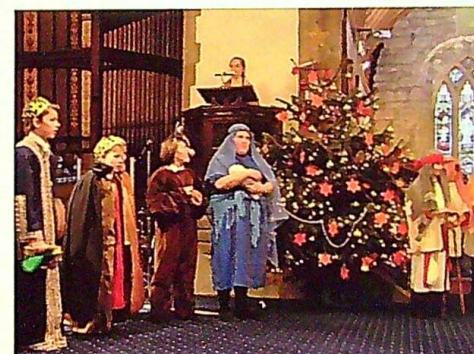
### The worship life of the school

As a church school, the major Christian festivals are always celebrated. At Christmas, two Carol Services are held in St. Andrew's Church. Each service is attended by pupils from two houses, as the church cannot accommodate the whole school. Pupils are fully involved in delivering the worship which includes readings, drama and music.



Collective worship is a key feature of the daily life of the school. During the academic year of 1994-95, a worship committee was created which included pupils. The following year a Balshaw's Communion Service book was compiled for use at the regular breakfast communions held in school. The prospectus describes how worship is organised. House, year and tutor groups worship together. Visitors as well as staff and pupils lead worship. There are prayer groups for staff, pupils and parents. In 1997 the school was involved in the Hoghton Tower Pageant to celebrate 1400 years of Christianity. For the year 2000, the school created millennium banners and it was also involved in 'Pentecost 2000'. In 2006 the school was fortunate to appoint a

school chaplain, in a joint chaplaincy with Runshaw College and St. Andrew's church. The first chaplain was Ruth Taylor and currently Sarah Ferguson is the chaplain. Special curriculum events, such as the Year 7 Spirituality Day held in spring 2011, support the development of the Christian character of the school. Spirituality Days are now part of the school's annual calendar. Balshaw's pupils participate in many of the Blackburn Diocese Board of Education events held at the cathedral, such as Education Sunday services. In October 2012, 2 pupils, Sophia Kelly and Matthew Petinaud, read the lesson at the Farewell Eucharist for Bishop Nicholas Reade.



Scenes from the Carol Service in St. Andrew's Church December 2013 during which pupils presented their version of the Nativity story.



representing gifts of the Spirit - Hope, Peace, Love and Faith. Nicki presented these to the school before she left in 2012 and they were dedicated by Rev. David Gibb at a Communion Service. They hang in the hall.

In February 2011, Bishop Reade confirmed some pupils at Balshaw's. This was the first time a confirmation service had been held in a school rather than a church. Banners were borrowed from Blackburn Cathedral for the service. As Jo Venn really liked the idea of the banners, she persuaded Nicki Websdell, to make one for the school. She has since made four-

### Special Events

1982 saw the bicentenary celebrations of the Balshaw's Trust. A committee consisting of staff, governors, parents and the Head Boy and Head Girl was created to plan the activities for the year. Activities included a celebratory dinner held at the Civic Centre, a reunion in school and a Balshaw's exhibition in the museum. A



Founder's Day service was held in St. Andrew's Church on 14<sup>th</sup> June. Balshaw's won the staff cricket match against Runshaw College in June.

Pupils took an important role in the school's 2000 Millennium dinner. Held in the school hall, guests were treated to a 4 course dinner which was prepared by guest chef Chris Smith and the school's assistant cook, Liz Sumner, in the school kitchens. The menu included a cocktail with canapés, parsnip and apple soup and entrecôte Italienne at a cost of £16 including wine. Pupils from Years 9 and 10 were trained as

Mike Otter recalls:

Some of the highlights for me over these years include attending the 2000 Millennium celebration dinner in the school hall (prepared and served by pupils with the guidance of a chef); attending the Balshaw's 225<sup>th</sup> anniversary dinner in 2007, also held in the school hall;

waiters and waitresses by Vincent Slater and Tak Yeung from Leyland Golf Club. Jack Hepworth, then in Year 9, played the piano during the meal and Peter Bird (Y11) was the DJ. The event also raised £1,200 for the Memorial Garden project.

In 2006, a group of teachers (Viv Lee, Roger McDonald, Dave Ellacott and Bill Johnston) organised a reunion for people involved with Balshaw's between 1975 and 2006. Held on 20<sup>th</sup> May, the events was attended by over 90 people.

The 225<sup>th</sup> anniversary was marked by a celebration dinner held in the hall in October 2007. The successful format of the Millennium Dinner was repeated, with pupils serving guests and helping with the preparation of the food.

2009 was Darwin Year – the 200<sup>th</sup> anniversary of Charles Darwin's birth. Caroline Molyneux, the Head of Science, secured a grant of £10,000 from the Wellcome Trust, to enable her department to arrange a series of activities and events throughout the year. These included displays and workshops at Leyland and South Ribble museum, a family history evening and debates held at St. Andrew's Church. Although the science department was responsible for the Darwin year, the events ranged across the curriculum and involved members of the local community as well as other local schools.

Following the success of the Darwin year, 2011 was designated as 'Space Year' at Balshaw's. Funding secured by Caroline Molyneux provided for another series of exciting and different events. These included the use of a giant inflatable planetarium and the very special visit of 2 members of NASA in August. Many local teachers and schools benefitted from Balshaw's Space Year, as professional development events were run throughout the year.

Special events appear to take place regularly at Balshaw's. These may take the form of specially designated weeks or days which focus on a particular theme, such as languages or personal safety. As so many have been arranged over the past 30 years, it is impossible to name them all. However, many have been recorded within the issues of the school's 'Transform' magazine. First published in April 2006, the magazine records activities and events undertaken by staff, pupils and those formerly associated with the school. Pupils and staff write the articles which reflect the very wide range of experiences provided at the school. Two issues are published each year – the October 2013 issue being the 16<sup>th</sup>.

## Balshaw's and the Community

The sense of community is important indeed it features as one of the school's primary aims set out in the prospectus, *'To build upon our links with Parents, Community, Business, Engineering Firms, the Church, Industry and Further Education'*.

As a church school, Balshaw's has close links with local churches, particularly St. Andrew's Church. Ministers from both St. Andrew's and St. Ambrose churches have served as governors together with those people appointed from the PCC's. The joint chaplaincy has enhanced the links. Although the school's church school status has always been important and well-maintained, since 1995, when Jo Venn became headteacher, the Christian character of the school has been further promoted and developed. One way in which this is reflected is through the donations to charities made throughout the period covered by this book. Staff and pupils work imaginatively and hard to raise money for their chosen charities. It must be remembered that such activities are in addition to the funds raised for school-based fund raising such as the annual Spring Fair and Balshaw's Association events. On average, at least £4000 is raised for different charities each year.

The charities supported include local, national and international organisations supporting children, health, emergency and disaster funds.

### *Charitable events – some examples*

£2,000 to St. Catherine's Hospice-1993,	Shoeboxes to Romania –1993
£2,500 for British Red Cross –1995	£2,250 for Kids of Croatia-1996
£2,000 for Head Injuries Unit Preston 1997	£1,500 for Imperial Cancer Research –1998
2005 – Jeans for Genes, Children in Need, Operation Christmas Child	
2006 – NSPCC, Bethany Project, Macmillan, Operation Christmas Child	
2010- £1,224 for Haiti Earthquake	

Fund raising events have taken many forms – coffee mornings, sponsored activities, cake bakes/ sales, knitting and non-uniform days to name but a few. Some have involved small groups of children or members of staff and others have involved the whole school.

For the past few years the school has made a particular effort to raise money for charities in the time leading up to Easter. The chosen 'house charities' benefit from a 2 week period of planned fund-raising activities during Lent. For example, in 2012, the charity 'Dreamflight' received £2,875 raised through such activities as sponsored silences, car washing and penalty shoot outs.



108 shoe boxes filled for Operation Christmas Child in 2009.



The staff are often involved in fund raising too. For example, in 2008, 13 'Beauties from Balshaw's' completed a Moonlight Walk in aid of St. Catherine's Hospice.

The 13 'Beauties' completing 2008 Moonlight Walk.



All members of the school community were involved in fund raising for the Memorial Garden. One group of pupils from Worden house (Worden 9) made particular efforts which were later recognised when they won the BT Seen and Heard Award. The award recognises the part young people play in the development of their local communities.

February 2011 saw a 'first' for the school's fund-raising methods. A 'Swing Band Evening' was arranged to raise money for 'Help the Heroes'. Organised by members of the Balshaw's Association, the evening was enjoyed by over 100 people.

Most recently, one member of staff, Martin Barrett, completed the gruelling Land's End to John O'Groats cycle ride to raise funds for the Ross Tomlinson Tribute Fund. Undertaken in May 2013, Martin raised over £4000.



Martin Barrett with Ross Tomlinson's parents. Leyland was an overnight stop-off point on the cycle ride. He left from the school.

The school has a long association with the Rotary Club. The Governors' Annual Report to Parents of 1993-94 states that members of the Rotary Club were once again involved in 'mock interviews' for Year 11 pupils. These continue to the present day. Pupils are also involved in Youth Speaks and the Rotary Youth Leadership Awards as well as the Young Chef of the Year and Young Musician of the Year awards. In 2012, the school joined forces with Sue Ryder to sponsor a clinic in Malawi for 12 months. This involved each house raising money to sponsor a child as well as the school raising £3000 for the clinic. In 2009, the school hosted the Rotary Club's National Technology Tournament, sponsored by BAE. The day was successful in more ways than one, as Balshaw's teams won a team first and a second place in the competition which was entered by 20 secondary schools.

The relationship with local businesses within the community has already been commented upon in regard to the school's engineering status. However, the relationship with, for example, Schwann Pizza, has been maintained, creating support for the annual Spring Fair and other events. The Spring Fair programme always lists the sponsors, both private and public. When given the opportunity to do so, Balshaw's participates in local business projects. For example, in July 1999, the school was awarded a prize within the Education Business Partnerships Central Lancashire 'Partnerships for the Future' project. In November 2008, a group of Year 11 students represented the school at the Borough Business and Enterprise Competition. The group were awarded the prize for the best business plan.

The school also participates in many joint school projects and activities, supporting schools within South Ribble and the wider area. Drama, poetry, public speaking and maths are some of the activities in which the school either hosts or joins other schools. Some are competitions in which Balshaw's sometimes triumphs. Others demonstrate the willingness of staff and pupils to support the local community. In



2008, the school provided Lancaster Lane Community Primary School with the support needed by a particularly gifted and talented child. Kimlam Nguyen, then in Year 3, received an hour long maths lesson each week from Miss Rhodes working on Pythagoras' theorem and equations.

Balshaw's grounds have been used to support the Tiddlywinks 'forest school' for the past five years. Tiddlywinks is the pre-school attached to Leyland Methodist Infant School on Canberra Road. A woodland area within the school grounds has been prepared for use by the 3-4 year olds each week. They visit to play games, hunt bugs and design shelters as well as listening to and sharing stories.

### Sport at Balshaw's

Sport has always been a key feature of the life of the school. It has been the source of considerable achievement both for the school and for individuals. George Birtill records the successes of the second season of 'rugger' in the early 1930's, when the school's new colours (black with black and silver striped stockings) were introduced. He even records the fact that 'Balshaw's-the soccer school'-had been known to send players to Preston North End and Blackburn Rovers! More than 60 years later the school is still supplying quality players to local professional clubs. (See later sections on Clarke Carlisle and Phil Jones.)

The current prospectus (2013-14) states that the school 'aims to provide all pupils, irrespective of ability, with the opportunity to take part in a range of meaningful and enjoyable sporting activities'. Curricular activities include: athletics, badminton, basketball, cricket, dance, football, gymnastics, health and fitness promoting activities, hockey, netball, rugby, rounders, softball, tennis and table tennis. In addition, extra-curricular activities include: aerobics, boxing, circuit training, cross-country, cheerleading and golf. It goes on to state that the school's 'aiming at excellence' motto works extremely well within the field of sports. Balshaw's continues to be well-represented at local, county and national levels in a range of sports. These successes are charted in annual speech day programmes, the Mega-mag, the website and the Transform magazine. It would be impossible to record them all. Individual pupils have also excelled in their chosen sports whilst still in school and after leaving. Some have represented the county and the country, others have gone on to become professional sportsmen and women.

Former Balshaw's pupils who have made their name in sport:

Jamie Atherton-athlete
Paul Bradshaw-England 800m athlete
Clarke Carlisle-professional footballer
Emma Dovey-England netball
Bryn Hargreaves-Bradford Bulls Rugby
Charlotte Heyes-Blackburn Rovers Ladies Football
Phil Jones-professional footballer
Chris Tuson-Wigan Warriors
Jennifer Edwards-England Women's Rugby
Danny Mayor-professional footballer
Tom Ince-professional footballer





Cross Country team (Jennifer Edwards holding shield) 1996.

The school's record in South Ribble competitions of all kinds is strong and successful. The Governors' Reports to Parents dated 1998 to 2001 each contain a 'roll of honour' in which the South Ribble competition successes are listed. Athletics, badminton, cross country, football, hockey, netball rounders and tennis are represented. Many team members receive school colours ties and badges in recognition of the contribution they make to the school's sporting successes, as well as for their own achievements. These are usually listed in the annual speech night programme and roll of honour in school.



U13 Girls' Football team  
2011

Records from governor files, speech night and other sources also list individual pupils and teams who have enjoyed particular success in their chosen sport. Although by no means exhaustive, the following extracts illustrate the breadth of sporting activity undertaken and the ability and commitment of Balshaw's pupils (and staff) to achieve their sporting potential.

1985: Sarah Tinsley is a member of the English Schools' Swimming Squad.

1986: Sarah Tinsley is a member of the English Schools' Swimming Squad, Karolyn Rimmer is a finalist in U16 England Badminton Tournament, and Sarah Carroll is a member of the Lancashire County U18 2<sup>nd</sup> Hockey Team.

1987: Stuart Ball is a member of the Lancashire Schools' Golf Team.

1990: Neil Hodgson is a member of the winning Lancashire/Yorkshire Schools' Golf Team.

1991: Balshaw's Athletics team won the South Ribble Championship.

1992: James Grant is youngest ever member of the Lancashire Schools' Sailing Team.

1995: James Grant represents England in sailing.

1998/9: Balshaw's South Ribble U14 girl's athletics winners, U16 girl's cross-country winners, winners of U14 hockey, U16 netball and all rounders tournaments. Runners-up in the national Open Orienteering Championships class M18B.

1999/2000: South Ribble successes: winners U12 and U16 girls' athletics, winners U16 football cup, winners U16 hockey cup, winners U14 netball tournament, winners U14 and U16 rounders tournament.

2001: South Ribble U16 girls' athletics winners, U16 badminton league winners, U12 football cup winners, U14 netball tournament/league winners, and U16 rounders winners.

2004: Paul Bradshaw and Kieran Mee gain bursaries towards sporting events-travel to Australia with St. Helen's RC.

2006: Emma Dovey selected for England U16 Netball development squad, David Dunwell selected for North West regional rugby development squad.

2008: Balshaw's Y11 Football team win Lancashire Cup (for the first time for 89 years).

2009: Kati Williams represents county, region and national stage as an English Schools' athlete, Zoe and Robert Armstrong cycle at national level, Abi Slater at national level in Dressage and Kodi Dearden 4 times U16 British Kickboxing Champion.

2011: Balshaw girls win Npower Football League U13 cup, Beth Evans and James Salisbury compete in the English Schools' Track and Field Championships.

2013: selected to represent at National level: Robert Armstrong (cycling), Anna Doughty (swimming), Holly Jackson (swimming), Zoe Armstrong (cycling).



James Salisbury and Beth Evans 2011  
English Schools' Championships



Golf team 2009: Harry Finch, Matthew Cragg,  
Jonathan Mote

Sport and adventure trips played an important and significant part in the development of sport within the school.

Former pupil Martin Barrett recalls the excitement, camaraderie and life experience the rugby/football tours and adventure trips provided for those who were able to travel with the school.

*The peak period of forays into continental Europe by groups of keen Balshavians was undoubtedly 1982 through to 2007.*

*W. E. Johnston, 'Bill' or 'Sporting Billy', Head of PE and Head of Farington House, blazed a trail into Europe with the highly successful Arnhem Rugby trip of 1982. These initial incursions proved a highly successful precursor to regular invasions of Holland by many groups of sporting stars.*

*Eventually, the 'home' base for the annual Holland tour became the resort of Noordwijk on Zee. Hordes of eager, red-blooded male Balshavians invaded foreign shores every March and April to teach our European cousins how to play rugby and, eventually, football.*

*Excellent performances were the 'norm' and on each tour a real bond was developed resulting in many happy memories. Each year the school competed in the Dutch National Open Rugby Festival and, despite the 'under 16 rule' being loosely interpreted by some opponents, Balshaw's own version of the 'All Blacks' earned victories against Dutch rugby giants such as Gouda, Utrecht. They were also victorious against other English-based rugby clubs and school sides. The level of commitment was always outstanding and sometimes astonishing. (Ansar Afsar, Scott Cockcroft and Paul Bebbington spring to mind.) The pride in representing Balshaw's in these 'international' fixtures invariably brought out the best in the participants, with remarkable victories often earned against all the odds. Alumni such as Clarke Carlisle,*

*Stuart Howson, Adam Smith and Phil Hurst also gained invaluable experience on these tours.*



Tony Nolan, Roger McDonald and Bill Johnston on one of the annual sports tours in Holland.

*Alongside the sport, there were many opportunities for what may be loosely described as 'cultural liaison'; with trips to Amsterdam for exciting canal boat tours, visits to The Hague and the magnificent Tiki Pool at Wassenaar with its 'kamikaze' 60km/h water slide.*

*Unfortunately, staff and students sometimes stretched the toleration of the normally easy-going Dutch attendants to the limit! The English abroad!*

*It has to be admitted that the trips were not always a major linguistic success (despite Mr. McDonald's presence.) On one tour, arriving at a football club in Rotterdam, the intrepid Mr. Johnston dismounted the coach, urging the rest of us to 'stay put and wait' whilst he checked where we should get changed. After a short conversation with a Dutch passer-by, he returned to the coach and informed staff, students and the driver that we would be getting 'changed' two miles down the road at a local bank! Only when we arrived at the bank did 'the penny drop'! Happy days and nights.*



### The Pride of Balshaw's

Given that 185 pupils enter Balshaw's each year, it is estimated that about 6000 students have passed through the school in the last 30 years! Although some will have entered and left mid-term, the vast majority of students entering the school completed their high school education at Balshaw's. Many have detailed memories of friends, teachers and events – some of which may be a cause for pride, others less so.

It is inevitable that some students make and leave a more significant mark on the school than others. This may be due to their personality and behaviour, their academic or other achievement or their contribution to the life of the school. (See appendix for list of Head Boy/Head Girl) Many ex-pupils maintain close links with their friends after leaving the school. They maintain an interest in the school's activities.

The Balshaw's website includes a section called 'The Pride of Balshaw's'. It lists 13 former pupils, Balshavians, who have become well-known in their chosen profession or field of work.

Name	Profession/career	Balshaw's pupil
Jamie Atherton	Athlete	1988-95
Tom Dalton Bidwell	Writer/screenwriter	
Ian Bleasdale	Actor	
Marcus Bleasdale	Photo-journalist	Left 1984
Paul Bradshaw	Athlete (800m)	Left 2004
Kirsty Brimelow	QC	
Clarke Carlisle	Professional footballer	Head boy 1995/96
Michael Douglas	Celebrity hairdresser	Left 1988/89
Emma Dovey	Netball player (England)	
Baroness Jay of Ewelme Sylvia Mylroie		Left 1965
Bryn Hargreaves	Professional rugby player	Left 2001
Charlotte Heyes	Ladies footballer	Left 2008
Phil Jones	Professional footballer	Left 2008

However, as Jo Venn is always eager to emphasise, all pupils are of equal importance at Balshaw's. The school aims to support all talents and abilities, whatever form they may take, and to provide them with the confidence and security to 'be the best' in whatever they choose to do.

The fact that a number of former pupils return to work in the school, as teachers, support and maintenance staff, has already been recorded. The appendix listing long-serving members of staff includes at least 16 who were also ex-pupils. Regular reunions for specific year groups, Balshaw's Association events, the Spring Fair and a host of other school events ensure that ex-pupils can maintain a lasting link with Balshaw's. As the Speech Night speakers list shows, past pupils have regularly

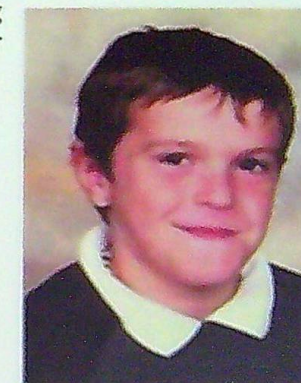
returned to present prizes and speak of their time at Balshaw's, emphasising how the school encouraged and prepared them for their future roles in society. Most recently these have included Clarke Carlisle (2004), Tom Bidwell (2009) and Phil Jones (2012), but others such as Dr. J. H. Lawton (1986), Olwyn Hocking (1989) and Lorraine Norris (2010) have also fulfilled this role.

Others, such as Michael Douglas, have supported the school and attended special events. Oliver Marsh, the author of 'The Best is Yet to Come', attended the Open Evening in October 2013, signing copies of his book. Oliver overcame a number of health problems whilst at Balshaw's and has already made his mark as an entrepreneur.

Many pupils have excelled in their chosen field whilst at Balshaw's. One such pupil is Jack Hepworth (Dip LCM). Jack overcame his hand disability to play the piano at the highest level. He was awarded the Diploma of the London College of Music whilst in Year 10. Jack's skills were regularly used at speech nights and he played during the 225 dinner in 2007. Another excellent musician was Jackie Cheong, who joined the school in 2001 from Hong Kong speaking very little English. Jackie left in 2005 to live in Canada where he went on to study Biochemistry.

Sadly, not everyone who has attended Balshaw's goes on to lead long lives.

Ryan Masterman was only 14 when he was killed in a cycling accident in April 2006. His tragic death was the catalyst for the development of the school's memorial garden.



Ryan Masterman



Ross Tomlinson

Ross Tomlinson, who attended Balshaw's from 2002-2007, died in August 2012 aged 21. Ross was diagnosed with a rare form of cancer when he was only 18. An excellent pupil and superb sportsman, Ross represented the school in football, athletics, rugby and basketball. Ross raised a substantial amount of money for the Young Oncology Unit of Christie's Hospital whilst undergoing treatment. The school, his teachers and his friends and family continue to raise funds for the Ross Tomlinson Tribute Fund. (See Balshaw's and the Community).

In 2010, two former pupils died tragically. Matthew Miller, who attended the school from 2003-2008, was a fine cricketer who represented the school and local teams. A



dedicated student, Matthew excelled at PE and ICT and pieces of his coursework are used as models of excellence.

Joe Yates was a superb craftsman whose work supported the school's engineering status bid. Joe attended the school from 2000-2005. His GCSE sculpture was galvanised and placed in the Memorial Garden as a permanent reminder of his talents and contribution to the school.

Paul Warren was a pupil from 1998-2003. He joined the Royal Marines in 2006 and served in Afghanistan twice. Marine Paul Warren died shortly after being injured in an insurgent attack in Sangin. Described by his commanding officer as, 'a man of presence...who inspired others...keen to learn and utterly selfless'. His funeral was held at St. Andrew's Church on 8<sup>th</sup> July 2010. Balshaw's provided a Guard of Honour through the street, and many of his peers and teachers were present to honour a brave marine and true Balshavian.



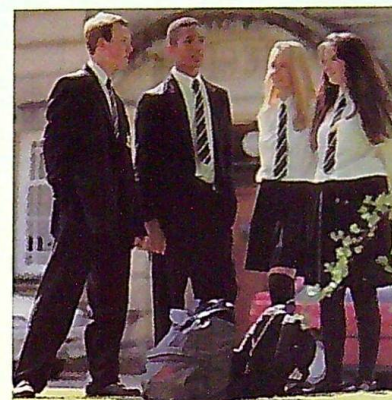
Paul Warren

Other former pupils who have sadly died include Louise Worth. Louise was Deputy Head Girl in 2002-03. She died whilst attending Runshaw College. A prize-The Louise Worth Memorial Shield for Citizenship-donated by her parents Mr. and Mrs. Jarvis, is awarded at Speech Night in her memory.

Susan Hodgkinson was a pupil during the time immediately prior to the period covered by this book. She was awarded the 1981 Lord Robens Prize posthumously. A Sports cup, presented by her father, is awarded at Sports Day. Sandra Duxbury, who died in February 1992 aged 15, is remembered by many. Her parents provided a prize- The Sandra Duxbury Memorial Prize for Mathematics-which is presented at Speech Night each year.

Each of the people mentioned above are remembered in the Memorial Garden. Parents, friends and colleagues can attend the annual Advent service at which all are remembered.

Some pupils have overcome significant difficulties whilst at school. Although these have been clearly understood and supported by the school community, the children have, in some cases, been recognised by national bodies. Tom Bidwell and Ami Froehlich both received a Princess Diana Memorial Prize Award, Tom in 2001 and Ami in 2002. The award recognised their achievement in the face of adversity. In 2010, Naomi Sykes, a Year 11 student and young carer, was selected for a Journey of a Lifetime and travelled to Borneo.



Clarke Carlisle 'Head Boy' 1996  
(2<sup>nd</sup> from left) with Jonathan  
Glew, Stephanie Demack and  
Rebecca Hughes

Clarke Carlisle left school in 1996, becoming a professional footballer with Blackpool and later teams such as Queen's Park Rangers, Leeds, Watford, Burnley and Preston North End. An able and talented student, Clarke was involved in a range of activities, appearing in the production of 'Henry' in 1996. In 2002 Clarke was named as 'Britain's Brainiest Footballer' and he later appeared in and won the TV quiz 'Countdown'. He has become a well-known figure in the world of football, regularly appearing on TV and radio, and most recently presenting programmes related to depression and racism within the world of football. Clarke presented the prizes at Speech Night in 2004 and has maintained his interest in the school and kept contact with a number of members of staff.

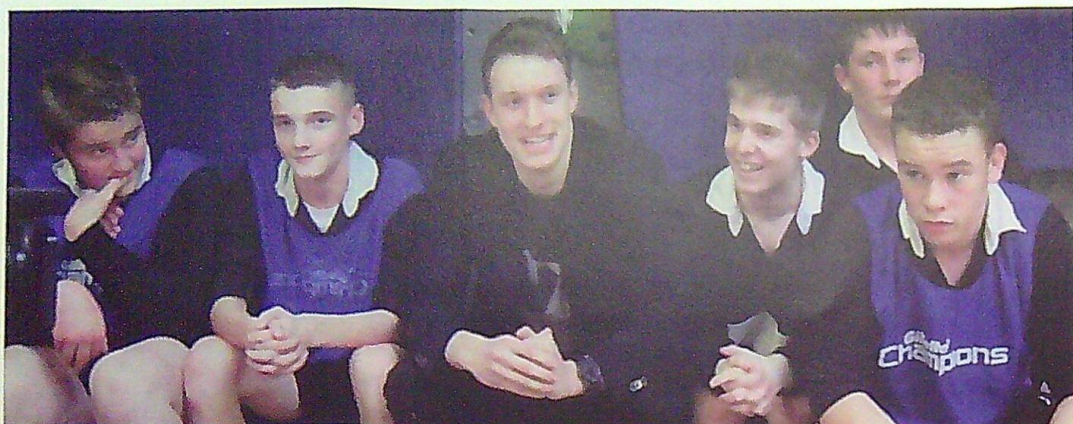
Tom Bidwell was awarded the first prize in a National Poetry Competition in 2000, signalling his abilities and interest in writing of all kinds. Whilst at Balshaw's Tom was diagnosed with cancer. His poetry reflected his thoughts and concerns at that time. Tom became a playwright, writing screenplays for TV serials such as 'Eastenders' and 'Casualty'. In 2011 Tom's short film 'Wish 143' was nominated for an Oscar. Tom presented the prizes at Speech Night in 2009.



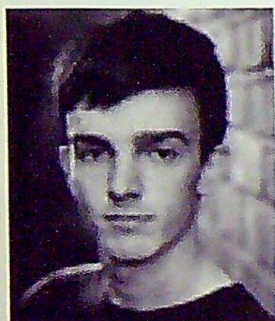
Tom Bidwell

Phil Jones attended the school from 2003 - 2008. A member of Worden House, Phil was a hard-working student, a prefect and games captain. Phil was a member of the school's Year 11 football team which won the Lancashire Cup in 2008. He joined Blackburn Rovers Academy in 2006, going on to play for the team's premier league team in 2009. Phil now plays for Manchester United and he has been a regular member of the England squad for a number of years. He had to work really hard to make up the time he lost in school whilst attending the Blackburn Rovers' academy each week. He has visited the school a number of times and he presented the prizes at Speech Night in 2012.





Phil Jones visited the school on 11<sup>th</sup> January 2012, meeting with staff and pupils.



Alex Moran

Alex Moran showed his talents as an actor in school productions such as 'Macbeth' in 2003 and 'Our Day Out' in 2004. After gaining a degree in acting, Alex entered the acting profession. In 2010 he gained the Jane Horrocks Award for Outstanding Achievement. Alex is currently appearing in the National Theatre production of 'Warhorse'.

Some past pupils have been kind enough to provide a few thoughts and memories of their time at Balshaw's, considering the impact their experiences have had upon their decisions and attitudes in later life.

**From Steven Mather (Centre Principal H.W. Moon Ltd. Wigan):**

My brother Trevor Mather and I both attended Balshaw's between 1977 and 1986. Trevor, three years older than me, was an excellent A grade student and sportsman who became Head Boy and captained everything, setting the standard for me - his younger, 'cheeky chappy' brother. Although not as academically gifted as my brother, I enjoyed sport and proudly captained the rugby and cricket teams.

Two of my many Balshaw's incidents:

During an Austrian skiing trip I recall getting caught on my late return by Miss Rigby. On the first night, after lights out, I had made herculean efforts in pursuit of an evening's entertainment. After climbing out of the second floor hotel bedroom window and

dropping into the snow-covered bins, I claimed my stash of beer. However, the beer was 'confiscated' by the teachers and helpers who appeared to be surprisingly happy about their bottled reward! My punishment was to carry the team "butty box" up and down from the bus to the nursery slopes for the remaining seven days.

Having my loosely named 'friends' replace the man-hole cover on the pitch black utility tunnel under the corridor just outside what was Mr. Ingram's office with me in it! Exploring the tunnels under Balshaw's for what seemed like an eternity with only the aid of a cigarette lighter was more than a little frightening and dusty! (*We won't ask why he had a cigarette lighter about his person.*) My friends, who found that they didn't have the strength to lift the cover off, went to assembly, where the late Mr. Barry Sanderson released me on hearing my shouts for help! I was subsequently placed in detention for one month.

Punishment at Balshaw's was always in proportion to the crime.

I loved every minute at Balshaw's, extracting as much laughter as I could from all around me. This was never totally discouraged, but reined in from time to time by teachers who wrote in my report, "If Steven spent as much time and effort on his school work as he does on entertaining, he could become equal to Einstein."

Einstein I am not, but I left school with all my O levels in place and with a confidence which Balshaw's never tried to crush. My school mentors, Phil Banks and Bill Johnson, both recognised my strengths and weaknesses and adapted their style of teaching to a language that a pubescent 'cheeky chappy' could understand. On reflection, all the teachers, whether liked or not at the time, had an impact on me. They helped me to develop the ability to adapt to different personalities and characters, a skill which I have honed throughout my career and which has served me well.

I married a Balshavian from my year, Elaine Tyrer, whose sisters Andrea and Adele also attended Balshaw's. So happy were we with our high school experience that Elaine and I moved back into the Leyland catchment area to ensure that our children, Hayley and Lauren, had the opportunity to attend Balshaw's. The continuity of staff and low attrition gave great security. The feeling of strong leadership continues with Miss Venn, although she doesn't wear the all-imposing cap and gown worn by Mr. Ingram as he wafted around the corridors with imposing grace!

**From Clarke Carlisle (Co-Commentator ITV Sport)**

The old adage tells us that school days are the best of our lives, but I think I'm one of a select few people who actually believe it.

I can vividly remember my first day at Balshaw's. It was the first time in my life that I had ever worn a blazer! Feeling like a member of the aristocracy, but looking more like a



breeze block with a jacket on, I strode through the "Boys" gate of the grounds. The building seemed enormous, the corridors went on forever and ever, as did the teachers.

There were so many different characters that made up the staff of the school, all contributing in different ways to my personal and academic development. I can still see the imperious figure of Mr Ingram, or PJ as the pupils affectionately called him, peering down at us from the front of the school hall. He left the school when I was in Year 8, but not before making a significant contribution to my fortunes, giving me a glowing reference that prevented me from getting into some serious trouble. No exaggeration that he had a huge impact on the course of my schooling. His unerring moral compass and authoritarian manner meant that many of the pupils rejoiced when he left, but were soon understanding the meaning of the phrase 'better the devil you know' when his successor, Miss Jo Venn, took over! If we thought that PJ had high standards, Miss Venn was on another level. It is hard to appreciate at the time what the value of placing these expectations on us was, but now, as a husband and father, I can see how important it is to have these things instilled in us.

There were many people who had a profound and lasting impact on me, none more so than the late Mr Barry Sanderson. Mr Sanderson was my Head of House, good old Clayton house. He was a compassionate man, always addressing situations with discussion and reason; at a time when vocal rage was often the preferred method, à la Mr D. Johnson (geography). He used humour to engage our wandering minds and tried as best he could to make his points relevant to what we were thinking and going through. He built a level of trust between teacher and pupil that many others struggled to emulate, which saw him as the 'go to' person in times of trouble or need. It was a great loss when he passed away, I pray he rests in peace and wish every blessing over his family.

There were a couple of other teachers who had mastered the art of making their methods and lessons relevant, thus engaging my brain. Mr Banks in IT was one, often referring to old camping stories to lighten the mood. Mrs Cathey was another. I adored the safe space that she created in the drama room, allowing our creative minds to hop, skip and jump over the traditional boundaries of classroom behaviour. I was introduced to the world of football fanaticism by Mr Woodcock and Mr Robertson. When I was under Mr Woodcock's tutelage in Years 10 and 11, I was playing for Blackpool Schoolboys. We spent the majority of our lessons discussing the performances of Sam Allardyce's men at the weekend rather than the laws of Applied Physics. It's testament to his teaching ability that we all managed to achieve our grades as well. Mr Robertson was (and still is) a Burnley fan. Little did we know that I would not only end up playing for the Clarets some 12 years later, but that it would also be the most successful period of my career.

The most valuable and influential experiences of my time at Balshaw's were the numerous occasions that I had the opportunity to speak or perform in public, culminating in my time

as Head Boy through Year 11. Taking part in assemblies, school plays and pantomimes gave me a great foundation in public speaking. I truly believe that my confidence in the media and addressing different audiences all stems from this early grounding.

The biggest impact on my career was made by the PE department and the school team coaches. Mr Snell, Mr Barrett, Mr W Johnson (PE and history) and Mr Croft managed to do something that many teachers have found so hard, when the government were trying to eradicate it from the syllabus. They instilled us with a competitive edge, yet still made the games fun and enjoyable. This approach meant that I endeavoured to play in any and every sports team that I could. I loved to be out there playing whatever game it was, I loved competing against other schools, and I loved winning! I didn't always win, I was terrible at racquet sports, continually being beaten by Graham Haydock at tennis and Gareth Smith at badminton, but I still turned up and played, striving to at least take a set off either of them!

This epitomises what I received from my time at Balshaw's. I was taught the fundamental values that are required in life. I don't mean I was taught how to be successful, although a lot of these things do contribute to that, but I was shown what it takes to be a good person, a respectful person, and a valued member of my community. These values seem to be lacking in a large part of modern society, but they will be an integral part of mine and my family's lives, underpinned by what I learnt at Balshaw's High School.

*From Tom Bidwell (Scriptwriter and poet):*

Now, I've thought long and hard about what I could write about in regard to Balshaw's. Maybe something about the excellent standards of teaching, the fantastic grounds in which I've imagined every school scene I've ever written about since, or how they supported me through a difficult illness during my years there. But I'm afraid I've decided to write something a little more base. But within that, there is often what is real and true, and we are therefore elevated somewhat higher.

High school is like no other time in one's life. For some reason it has been decreed that you should be amongst a great number of people of your own age, at a time when you feel most vulnerable; when you are trying to work out who you are. There is a natural hierarchy - the fifth years are much bigger, much more worldly and have what seems to be a sage knowledge of the school, and indeed, life in general. And so it happens that when a new wave of Bambi-like first years are herded fresh off the cattle-truck; wide-eyed and knees knocking, down the illustrious driveways of Balshaw's for the first time, there is something of a passing on of knowledge; of the histories, myths and etiquette of that institution.

One of these myths, and the one I remember most vividly, is what is known as the *goz pit*. 'Goz' is Lancashire slang for phlegm or spit. The *goz pit* is a set of stairs running down into the ground on the edge of the arts block/geography block courtyard. It gives access to the kitchens in the main building and has railings around the top to stop people from



falling into the hole from the playground level. On my first day, or maybe even before, I was told of the harrowing fate that would befall anyone who went down there. The door to the kitchen at the bottom is always locked, leaving no escape. If any unlucky soul found themselves at the bottom, someone would yell, "Goz Pit!" and the whole school would come to empty their sinuses onto the unfortunate victim below. Stories of people covered from head to toe in spit, looking like the swamp thing, crying, being given spare clothes from the PE cupboard before being sent home (no doubt for years of expensive counselling) rendered us all terrified of that dark amphitheatre.

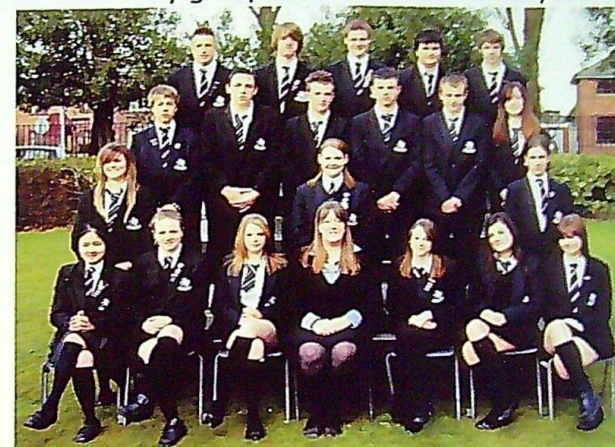
The thing is that no-one could actually remember this occurring-certainly not in living memory or in recorded history! Yes, I saw many attempts of older students trying to trick first years into going down there. ("I saw someone drop a tenner down there this morning" or, "The door down there is a short cut to the main hall.") But, because of the strength of the myth itself, everyone was too aware, no-one fell for it and no-one descended those fabled steps.

That was until I was in the third year. One afternoon in spring, a mean-spirited fourth year had taken it upon himself to invoke the *goz pit*. He had found some poor, miniscule first year and thrown down the baking tray the young lad had brought in for home economics. Even before the first year had begun his descent, the fourth year had yelled, "Goz pit!" and a mighty assemblage of other mean kids (of which there are always a few) had gathered around the railings ready for action. The young lad's eyes welled with tears. It was clear he was even more afraid of turning up to Home Economics without his baking tray, than he was being coated with spittle. But, just before he could move, a fifth year, one of the biggest lads in the school, a lad who had a reputation for no nonsense, moved the boy out of the way and began to slowly walk down the steps himself. His eyes looked up as he moved lower and lower, locking with each and every person gathered for the show; each with jaw tensed and ready to spit. Yet no-one moved a muscle. He grabbed the tray and began coming back up, this time with his eyes locked upon the fourth year who had instigated the whole event. Giving the tray to the first year boy, he walked off as coolly as he had come.

The crowd dispersed. Once again the goz pit receded back to what it had always been - a myth, a tale, a story-of heroes and villains, of hierarchy and justice, of how to survive in a time like no other. At a time when you are surrounded by a great number of people of your own age, at your most vulnerable, trying to figure out who you are.

### From Phil Jones (professional footballer: Manchester United and England)

In Year 7 my group tutor was Mrs. Conway and we met in an MFL classroom. Then, in Year



Caroline Molyneux with the tutor group of 2007.

8 Miss Molyneux arrived at Balshaw's and my tutor group moved into a Science lab for the next 4 years. We had some great times with group parties for every occasion, such as celebrating Chinese New Year with our friend Charlotte Cheng who was also in our set. We even had an Australian themed party to say goodbye to Grant Jenkinson who was emigrating in Year 10. The Christmas parties were always good fun, playing

pass the parcel and sharing 'secret Santa' gifts.

As a group we also suffered the sad loss of Ryan Masterman in Year 9. Following the tragedy, we wrote to local businesses to raise money for a memorial garden in the school quad to remember Ryan. We also held a 'Boys v. Girls' competition during the Spring Fair when we were in Year 9. The team raising the most money for the garden won a pizza lunch bought by Miss Molyneux. The boys organised a football competition and the girls did 'splat the teacher'. The boys won-of course!

Every break time we would use our tutor room to meet with friends. Although I had one day at Blackburn Football Academy every week, I would come in the next day at 7.30 am to catch up on work. Some of the others in my group started to join me in the mornings to do some extra work themselves!

I came away from Balshaw's with a good collection of qualifications and I have returned many times to see the teachers whom I now call my friends; Mrs. Thomas, Miss Molyneux and of course, Miss Venn. Once a Balshavian, always a Balshavian



### Staff past and present

The prospectus for 2013 states that, *'the quality of the education we offer derives in part from our experienced staff and in part from our excellent facilities'*. Previous sections have dealt with the facilities, so in this final section, we consider the impact of those who have taught and supported the work of the school over the past thirty years.

The Ofsted report of September 2013, in commenting upon the behaviour and safety of pupils states that, *'Students are immensely proud of their school.....They are hugely appreciative of the amount of personal and academic support that all staff give them. They describe the headteacher as being 'at the heart of the school.'* Such comments are not easily gleaned and, although they reflect the opinions of pupils in school in 2013, they could easily be repeated for former years. For, as some of the former pupils have reflected, the staff of Balshaw's have had a very positive impact upon the lives of many.

The size and constitution of Balshaw's staff has changed significantly during the period covered by this book. In 1981, the ratio of male to female staff was more or less equal, but the number of support staff employed was considerably fewer when compared with those employed today. However, some of those working in the school in the early 1980's remained 'on roll' for much of the past thirty years! (See appendix for lists of long-serving members of staff.)

The Speech Night programmes and headteacher speeches reveal information about staff arrivals and departures. The Speech Night programme of 9<sup>th</sup> December 1982 lists the current staff in rank order: senior leaders, assistant masters, assistant mistresses and support staff. Teachers are listed in the order of the length of time served within the school.

#### Staff of the School 1982

*Headmaster: P. J. Ingram*

*Deputy Headmaster: G. Gambling*

*Senior Mistress and Deputy Head: Mrs. M. H. Pickersgill*

*Deputy Headmaster: R. H. Hardwick*

*Assistant masters: K. R. Smith, K. Klemm, J. M. Fearnley, D. J. Johnson, J. D. Wane, D. E. Ellacott, B. Sanderson, W. A. Burgess, W. Johnston, D. J. Pennington, J. Bairstow, K. Blackwell, M. A. Barrow, D. Childs, D. S. Loxham, P. A. Banks, W. Kerr, D. Woods, R. K. Woodcock, A. R. McDonald, P. McLaughlin, I. D. Raitt, D. Robertson, H. E. Jackson*

*Assistant mistresses: Mrs. P.A. Nicholas, Mrs. M. Hall, Mrs. R. H. Bass, Mrs. G. Smith, Mrs. K. Bretherton, Mrs. J. Penswick, Mrs. F. Jenkins, Mrs. A. Doeg, Mrs. S. M. Donnelly, Mrs. S. J. Pye, Mrs. V. R. Peacock, Mrs. P. Carson, Mrs. V. Gambling, Mrs. M. Lord, Miss E. A. Roberts, Miss A. Rigby, Mrs. D. E. Wignall, Miss S. Davidson, Mrs. M. Jenkins, Mrs. F. Edgerley, Mrs. J. S. Wilson, Miss S. B. Cuniffe, Miss J. D. Ross, Mrs. J. E. Kerr, Miss V. C. Antrobus, Miss J. Sutton*

#### Staff of the School 1982 continued

*Bursar: Mrs. E. Counce*

*Clerical assistants: Mrs. M. J. Grundy, Mrs. I. Walton*

*Caretakers: Mr. & Mrs. R. Sharrock*

*Laboratory steward: Mrs. A. Bibby*

*Laboratory assistant: Mrs. M. E. Clayton*

*Groundsman: Mr. B. Lane*

*Resources assistant: Mrs. M. Braithwaite*

*Cook supervisor: Mrs. J. Dixon*

It is interesting to compare the above list with the staffing list shown in the Speech Night programme of 14<sup>th</sup> November 2013 which can be found in the appendix.

The above lists provide a 'snapshot' of the school's staff. In 1983, Margaret Hall (Head of Worden House) left after working for 20 years in the school. She was replaced as Head of House by Jim Saunders, who remained in post until retirement in 2008. Pat Nicholas retired as Head of Farington House in 1984. She had also given over 20 years to the school. Margaret Hodgson was appointed as Head of Farington House the following year.

1987 saw a number of changes in teaching personnel. Bob Hardwick left to become the Headteacher of Bury Church of England High School at Easter and Margaret Pickersgill retired in the summer. Margaret, a former pupil, was appointed as Senior Mistress in 1974, having been the Head of Girl's PE for a number of years. Joyce Penswick and Jean Kerr also retired. Dave Croft was appointed as the Second Master (Deputy Headteacher) for September 1987 and Margaret Hodgson was promoted to the senior management team. Vivian Peacock returned to the PE department and Dave Crabtree joined the Technology department for September 1987.





Teaching staff photograph taken summer 1987 on the retirement of Margaret Pickersgill.

Back row from left: Phil Banks, Dave Loxham, Dave Woods, Roger McDonald, Walter Kerr, Jim Saunders, Dave Ellacott, Nigel Norris, Dave Pennington, Dave Johnson, Dave Childs, Chris Snell, Bill Johnston

3<sup>rd</sup> row from left: Keith Klemm, Jeff Fearnley, Geoff Aston, Dave Wane, Keith Woodcock, Ken Blackwell, Barry Sanderson, Pam Carson, Freda Jenkins, Janet Wilson, Celia Gariff, Margaret Hodgson, Graham Gambling.

2<sup>nd</sup> row from left: Bill Burgess, Dave Robertson, Margaret Jenkins, Keith Smith, Sandra Donnelly, Eis Roberts, Jean Kerr, Ann Hoolahan (Rigby), Anne Doeg, Julie Perks, Mary Lord, Paul Ingram.

Front row from left: Gwyneth Smith, Joy Loveland, Julie Nolan (Ross), Sheila Hotham (Cuniffe), Angela Moran, Margaret Pickersgill, Joyce Penswick, May Wan, Margaret Greer, Rita Bass, Veronica Gambling, Kathleen Bretherton.

Although the school has benefitted from a stable and loyal staff base throughout its history, changes of staff through promotions and retirement occur each year. In 1990, Jeff Fearnley (Head of Science) left to train for the ministry and Mary Lord, who had worked in the school from 1976, retired as Head of Business Studies. The Bursar, Elsie Counce also retired, having worked in the school for 22 years. She was replaced by Jean Brundrett who was already a member of the office staff. Keith Klemm retired the following year and, in 1992, Rita Bass retired having given 25 years' service to the school.



Jeff Fearnley



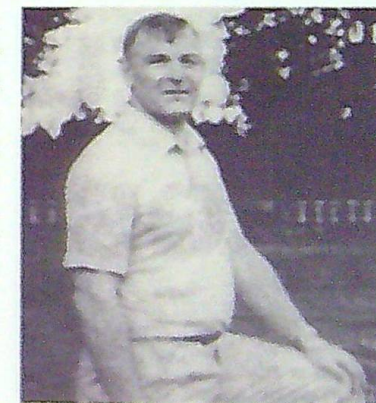
Graham and Veronica Gambling.

1994 and 1995 saw the biggest changes in staff for many years. Paul Ingram retired as Headmaster in December 1994, having taken up the post 21 years earlier in 1973. Keith Smith (Head of Cuerden House), Gwyneth Smith, Dave Pennington and Anne Doeg also retired. Miss Jo Venn, who was appointed as Headteacher in June 1994, took up the post in January 1995. At the end of that academic year those retiring included: Graham Gambling (Deputy Headteacher), Walter Kerr (Head of Maths), Dave Wane (Head of CDT), Veronica Gambling (Head of MFL), Sandra Donnelly (Head of Home Economics), Freda Jenkins (English) and Margaret Jenkins (Science). Sadly, the first job Jo had to do in January 1995, was to inform the school of the sudden and unexpected death of Geoff Aston.



Geoff was appointed to the Technology department in 1985. At a time when few people were well-versed in the use of computers, Geoff's interest and abilities were much appreciated. He ran a computer club for pupils and helped a number of staff. Geoff was responsible for the running of the school's Young Enterprise project.

Barry Sanderson, a member of the Maths department from 1974, died very suddenly in school on 12<sup>th</sup> February 1996. He was the Head of Clayton House and thoroughly enjoyed the challenge of supporting the setting of the school time-table, ultimately becoming the CASS manager on the retirement of Graham Gambling in 1995. A well-respected member of staff, Barry was greatly admired by pupils and teachers. He had a great passion for sports, particularly golf. He was in charge of the school golf team.



Clarke Carlisle recalls:

He was a compassionate man, always addressing situations with discussion and reason. He used humour to engage our wandering minds and tried as best he could to make his points relevant to what we were thinking and going through. He built a level of trust between teacher and pupil that many others struggled to emulate, which saw him as the 'go to' person in times of trouble or need. It was a great loss when he passed away, I pray he rests in peace and wish every blessing over his family.



Poem written by Emma Bracewell on the death of Barry Sanderson.

*It hurts so much without you here;  
The world is empty, it holds no cheer.  
You'd laugh and joke, you fooled us all;  
You were always strong and always stood tall.  
You were a teacher, both mighty and great,  
But when we had problems, you became a mate.  
You taught us how to understand,  
When it came to maths, you'd extend a hand.  
You were a judge, who knew wrong from right,  
You filled our school days with broad daylight.  
Because you were a teacher of the very best,  
You deserve a well-earned rest.  
You served the school, filled it with joy,  
You helped out every girl and boy.  
Please everyone keep Mr. Sanderson in mind.  
He is the very best of the human kind!*

The period from 2002 to 2012 has seen a significant number of long-serving members of staff retiring. These include: Dave Ellacott (2002), Marion Clayton (2003), Viv Peacock (2007), Eis Roberts (2011), Anne Rigby (2004), Sheila Hotham (2006), Celia Gariff (2006), Margaret Hodgson (2008), Julia Croft (2007), Carole Reader (2008), Carole Powell (2011), Liz Johnston (2010), Dave Johnson (2009), Bill Johnston (2005), Dave Childs (2011), Phil Banks (2012), Dave Woods (2006), Keith Woodcock (2006), Roger McDonald (2004), Dave Robertson (2007), Jim Saunders (2008), Eileen Cooper (2008), Dave Crabtree (2012), Dave Croft (2007), Pete Woods (2012), Sue Armstrong (2012). 2013 saw the retirement of Tony Nolan, May Griffiths and Jane Noblett. Some of these members of staff spent very significant parts of their careers working in Balshaw's. Many were 'characters' and all ably supported and enhanced the work of the school through their hard work and diligence.

Bill Johnston joined the staff in 1975 as Head of Boy's PE. He became Head of Farington house.

From Martin Barrett (former pupil):

*Many Balshavians owe Bill Johnston a real debt of gratitude for organising such wonderful trips. For many staff and students alike, the Holland tours were a highlight of their Balshaw's career, with stories to last a lifetime.*



Roger McDonald was appointed in 1981 and worked in the MFL department. He became Head of Cuerden house. Roger accompanied a number of the Holland Rugby tours organised by Bill Johnston. He retired in 2004.



Tony Nolan joined the R.E. department at Balshaw's in 1994. He also accompanied the rugby tours of the 1990's and he arranged the annual staff bowling evening. Tony retired in 2013.



Jim Saunders joined the school in 1983 when he was appointed as Head of Worden House. Jim could be relied upon to feature in staff drama and other events. He retired in 2008.

Pete McFarlane, seen here taking an art lesson, was appointed in 1996.



Dave Croft was appointed as Deputy Headteacher in 1987. A keen sportsman, Dave was responsible for the introduction of the wide range of outdoor and adventure residential trips which became so popular. He was a fun-loving and popular member of staff, valued and respected by all. He was a highly successful teacher of GCSE PE. Dave married Julia Cathey whilst at Balshaw's. Julia was Head of Clayton House and previously, Head of Drama. They both retired in 2007.





The Senior Leadership Team 2003: Dave Johnson, Dave Croft, Jo Venn and Margaret Hodgson

Margaret Hodgson joined the school in 1985 as Head of Farington House. She was made a member of the Senior Leadership Team in 1987 and remained as an Assistant Headteacher until her retirement in 2008, teaching English and History. Margaret had overall responsibility for pastoral care, overseeing the work of the Heads of Houses.

Dave Johnson was appointed to teach Geography in 1973. He was Head of Geography during the 1980's and became Admin. Co-ordinator in 1991. He joined the Senior Leadership Team in 1996 and retired as Assistant Headteacher in 2009.

Moira Pate, the Head of RE, joined the school staff in 1988. In 2001, Moira was awarded a Farmington Institute Research Award and was seconded to carry out the research into RE in the spring of 2002. Moira continues to lead the RE department and is always heavily involved in the planning of special events such as the Christmas Carol Services.

As has already been stated, a significant number of those who have worked at Balshaw's were also pupils. Phil Banks was one of these. A pupil for seven years, Phil returned to spend the vast majority of his teaching career at Balshaw's, taking up his post in 1979 and retiring in 2012. Phil was Head of ICT. He is a member of the Balshaw's Foundation.

Kathleen Bretherton, a member of the science department from 1972 until her retirement in 1997, was also an ex-pupil. Carole Powell, (Head of MFL), Jayne Purcell (Head of Maths), Karen Bishop (maths) and Martin Barrett (Head of History) are past pupils. Jane returned in 1996, Karen in 2002 and Martin in 1992.

It is possible to say that *all* members of staff are valued and encouraged at Balshaw's; the repeatedly gained Investors in People Award and the Ofsted report of 2013 clearly

agree. However, some staff members naturally make a greater impact than others. One such person is Caroline Molyneux. Appointed as a 'fast track' teacher in 2004, Caroline was made second in the science department on the retirement of Keith Woodcock in 2006 and became Head of Science when Dave Robertson retired in December 2007. She was presented with an Outstanding Teacher Award in 2007 and the Royal Society Hawksbee Award in 2010. Through the organisation of the Darwin Year and Space Year, for which she gained substantial funding, Caroline put the school, and in particular, the science department, on the local and national map. Caroline has travelled to the USA, Iceland and Cyprus sharing expertise with other teachers. She left Balshaw's on promotion in December 2013.



Another teacher who has been recognised nationally is Vanessa Thomas, the Head of Technology. Vanessa gained the Design and Technology Association Food Technology Teacher of the Year Award in 2012. In 2007-8, Vanessa was appointed as a Food Partnership Consultant for Lancashire Primary Schools. She continues to support and develop the teaching of food technology in both primary and secondary schools in South Ribble and throughout Lancashire.

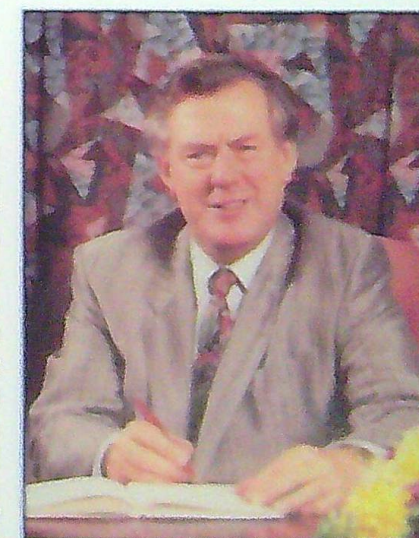


Not all members of staff remain in post until their retirement! Many move on to further promotion in other schools. Former members of staff who have moved on to headship include: Joy Byron, Muriel Riding, Chris Snell, Bob Hardwick and Claire Hollister.

Paul was appointed Headmaster in 1973, taking responsibility for the school as it entered a new phase as an 11-16 comprehensive high school. Paul was very successful in developing the school in its 11-16 guise. Through his leadership Balshaw's retained and further developed its reputation as a place of excellence. He ensured that, as the school grew in size, essential building improvements were made. Paul comments, "*Delays in getting building improvements were frustrating but did have one advantage, namely a computer room with equipment was included in the building programme for the school. The Authority funding was supplemented with money from the PTA Summer Fair. The PTA and the Harris Charity provided our first minibus with garage. The target size for the school was six forms in each year giving 900 pupils in all and the school has been full at this total for more than thirty years. This has enabled planning for pupils' needs to be effective.*" Paul ensured that the Christian character and ethos of the school was well-promoted. He was a member of the science department, teaching physics. Paul retired at the end of the autumn term in 1994.

Paul Ingram

Headmaster 1974-1994







Jo Venn was appointed to replace Paul Ingram in 1994, taking up the post in January 1995. As only the thirteenth headteacher of Balshaw's in its 230 year history, Jo has overseen the considerable changes and developments described in this book. Jo's commitment to the advancement and success of the school as a whole, and of all members of the school family is legendary. Eager to see the school develop and grow, she strived to ensure that the school fabric and facilities were modernised and fit for purpose. She also ensured that teachers, pupils, governors and parents benefitted from as many educational changes and innovations as possible. The gaining of the specialist college Engineering status and recognition as an outstanding school, both by Ofsted and SIAS, are examples of this. Jo's personal achievements and recognition equal those she gained for the school. In February 2001, she was made a Lay Canon of Blackburn Cathedral. In May 2002, she was invited by the Prince of Wales, to visit 'Highgrove' along with other headteachers of schools known for their excellence. 2004 saw her being recognised as 'Lancashire Woman of the Year' and in April 2005 she was presented with a National Public Servant of the Year Award for 'Inspiring Success-The Award for Leadership'. Jo's

outstanding Christian leadership and example, commitment to excellence and dedication have all been well-documented.

'The wise, dedicated and outstanding leadership of the headteacher is instrumental in allowing all students to achieve success and staff to flourish at this school.' (Ofsted report September 2013)



Bernie Temmen

It is well-known that Balshaw's has had surprisingly few headteachers throughout its history. Less well-known is the fact that the role of caretaker/supervisor/premises manager has been undertaken by relatively few people. In 1983 the then joint caretakers, Mr. and Mrs. Richard Sharrock, retired having worked in the school for 20 years. They were replaced by Alex Ryan who remained in post until 1989. The current premises manager, Robert Wilson, was appointed in 2012, following the retirement of Bernie Temmen in May. Bernie joined the staff as premises manager in 1989. In addition to the overseeing of all the major building and refurbishment work undertaken from 1989 to 2012, Bernie ran the orienteering team which won the Lancashire League a number of times. He also led school skiing trips.

Members of the school's cleaning and domestic staff also demonstrate surprising lengths of service. In February 2013, Pat Waterston retired after working for 38 years in Balshaw's. She worked alongside Pauline Eubank and Ruth Harrison, both of whom have also worked in school since the 1970's.

Pat, Pauline and Ruth have seen generations of pupils pass through the school as well as hundreds of staff.



Pat Waterston, Ruth Harrison and Pauline Eubank

Another member of the domestic staff, Angela Bailey left in December 2013. Angela had worked as a cleaner in the Technology block for 16 years.



The 'lollipop lady,' Jean Abbott has patrolled the Church Road crossing for the past 36 years. Now in her 37<sup>th</sup> year of working alongside Balshaw's, Jean started as a crossing patrol lady at the age of 24. She says, "I love my job and particularly the pupils, many of whom have been real characters."





### **Staff List (Speech Night November 2013)**

The following is a list of all those working at Balshaw's at the time of the Speech Night, held on 14<sup>th</sup> November 2013.

Headteacher: Miss J. M. Venn

Deputy Headteacher: Mr. J. Morgan

Assistant Headteachers: Mr. D. Melling, Mrs. A. Wilson

School Manager: Mrs. L. Bowden

School Premises Manager: Mr. R. Wilson

Pupil Premium Co-ordinator: Mrs. K. Boardman

### **Members of Teaching Staff**

Mr. M. J. Barrett	Miss C. Begaud	Mrs. K. Bishop
Miss M. Blake	Mrs. M. Brierley	Ms. C. A. Brown
Miss E. Brown	Miss K. Bryant	Mrs. M. Carr
Miss M. Cararec	Mr. A. Chalmers	Miss H. Chisholm
Mrs. S. Coburn	Mrs. C. Cornwell	Mr. M. Davidson
Mr. L. Duckworth	Mrs. C. Durkin	Mrs. M. Fielding
Mrs. T. Flannery	Mr. P. Fletcher	Miss D. Gladki
Mrs. J. Goodier	Mr. P. Greaves	Mrs. J. Hayes
Mrs. G. Henderson	Mrs. M. Higgins	Mrs. A. Holden
Mrs. D. Holden	Mr. A. Holland	Mrs. D. C. Howarth
Mrs. B. Jackson	Mr. G. Jennings	Mrs. L. Jones
Mrs. R. Llewellyn-Ball	Miss D. A. Lockhart	Mrs. K. Lowe
Mrs. J. Lylyk	Mrs. J. McCutcheon	Miss H. McDade
Mr. P. McFarlane	Mrs. D. A. McLean	Miss C. Molyneux
Mr. S. Mort	Mrs. J. D. Nolan	Miss C. O'Brien
Mrs. M. Pate	Miss L. Preston	Mrs. J. Purcell
Mr. M. Purnell	Mrs. F. Rawson	Mr. S. Riley
Mrs. M. C. Rogerson	Mr. A. Shorrock	Mrs. V. Thomas
Miss C. Warburton	Mrs. M. Whittam	Mr. R. Wood

### **Members of Support Staff**

Mrs. L. Barrett	Mrs. D. Bridge	Mrs. M. Fazakerley
Miss S. Ferguson	Miss C. Haggitt	Mrs. E. King
Mrs. S. Makinson	Miss H. Murray	Mrs. K. Pye
Mrs. J. Richardson	Miss L. Rhodes	Mrs. D. Stableford
Miss J. Stewart	Mrs. M. Tetlow	Mrs. T. Thorp
Miss L. Walkden	Mrs. K. Waterston	Mrs. G. Wells
Mr. W. Wilson	Mr. L. Woodvine	Mr. M. Wrennall

### **Members of Administration Staff**

Office Administration:		
Mrs. S. Elliott	Mrs. H. Elwell	Miss L. Gittins
Mrs. S. Howells	Mrs. D. Newsome	Ms J. Smith
Examinations Officer:	Mrs. S. Banks	
Learning Resource Officer:	Mrs. C. Sinclair	
Technicians/TA's:	Mr. R. Boocock	Mrs. J. Eagle
	Mrs. S. Kell	Mr. J. Nuttall
	Mrs. K. Peddie	Mrs. J. Rutter
	Mr. J. Elwell	

### **Members of Maintenance Staff**

Mr. J. Clark	Mr. I. Whiteley	Mrs. A. Bailey
Mrs. A. Brown	Miss H. Brown	Mrs. S. Cornes
Mrs. R. David	Mrs. P. Eubank	Mrs. R. Harrison
Mrs. T. Kelly	Mrs. J. Lambert	Ms N. Ollerton
Mrs. M. Taylor	Mrs. M. Wood	

### **Other Members of Staff**

Kitchen supervisor:	Mrs. W. Fitzsimons	
General assistants:	Mr. S. Booth	Mr. B. Kirk
	Mrs. E. Wadsworth	

Total staff: 117



### Long-serving Members of Staff

The members of staff listed below have all worked for a significant number of years at Balshaw's. Those who were also pupils at the school are noted.

Name	Dates served	Past pupil	Notes
Ambrose Ruth	1990-2009		Science teacher
Armstrong Sue	1994-2012		School office
Aston Geoff	1985-1995		Technology teacher Died Jan 1995
Bailey Angela	1997-2013		Cleaner
Banks Phil	1979-2012	Yes	Head of ICT
Banks Sue	1990-		Exams Officer
Barrett Louise (Tipping)	1997-		Inclusion Unit
Barrett Martin	1992-	Yes	Head of History
Bass Rita	1967-1992		Maths teacher
Bishop Karen	2002-	Yes	Maths teacher
Blackwell Ken	1977-1996		Head of RE / Technology teacher
Bretherton Kathleen	1972-1997	Yes	Science teacher
Bridge Diane	1996-		TA
Brundrett Jean	1987-1996	Yes	Bursar
Burgess Bill	1975-1989		Engineering drawing teacher
Carson Pam	1975-1996		Art teacher
Caunce Elsie	1968-1990		Bursar
Childs Dave	1978-2011		Head of Geography
Clayton Marian	1974-2003		Science technician
Cooper Eileen	1988-2008		School office
Crabtree Dave	1987-2012		Technology teacher
Croft Dave	1987-2007		Deputy Headteacher
Croft Julia (Cathey)	1990-2007		Drama/Head of House
Doeg Anne	1973-1994		English teacher/Head of Careers
Donnelly Sandra	1973-1995		Domestic science teacher
Durkin Carolyn	1996-		Head of Technology
Eagle Joan	1994-		Reprographics
Ellacott Dave	1974-2002		Head of English
Eubank Pauline	1979-2013		Cleaner for 34 years
Fearnley Jeff	1971-1990	Yes	Head of Science
Gambling Graham	1974-1995		Deputy Headteacher
Gambling Veronica	1976-1995		Head of MFL
Gariff Celia	1983-2006		Music teacher/Head of Business Studies
Griffiths May	1996- 2013	Yes	TA
Hall Margaret	1963-1983		Head of Worden House
Hardwick Bob	1971-1977 1980-1987		Deputy Headteacher

Higgins Marion	1998-		Head of Art
Hodgson Margaret	1985-2008		Deputy Headteacher
Hoolahan Anne (Rigby)	1979-2004	Yes	English teacher
Hotham Sheila (Cunliffe)	1982-2006		Special Needs/Head of Careers
Howarth Diane (Thornton)	1994-		Music teacher
Howells Sheila	1992-	Yes	School office
Ingram Paul J	1973-1994		Headteacher
Jenkins Freda	1973-1995		English teacher
Jenkins Margaret	1980-1995		Science teacher
Johnson Dave	1973-2009		Head of Geography/Assistant Headteacher
Johnson Liz	1994-2010		PE teacher
Johnston Bill	1975-2005		Head of Boys PE/Head of Farington House
Kerr Walter	1979-1995		Maths teacher
Klemm Keith	1966-1991		English teacher
Lee Viv (Peacock)	1974-1982 1987-2007		Head of Girls PE/ maths teacher
Lord Mary	1976-1991		Head of Business studies
Lowe Kath	1993-		Maths teacher
McDonald Roger	1981-2004		MFL teacher/ Head of Cuerden House
McFarlane Pete	1996-		Art teacher
McLean Debbie	2000-		Geography teacher
Nicholas Pat	1963-1984		Head of Farington House
Noblett Jane	1996-2013		SEN teacher
Nolan Julie (Ross)	1982-		Learning Support Manager
Nolan Tony	1994-2013		RE teacher
Pate Moira	1988-		Head of RE
Pennington Dave	1975-1994		MFL teacher
Penswick Joyce	1972-1987	Yes	Head of SEN
Pickersgill Margaret	1974- 1987	Yes	Deputy Headteacher
Powell Carole	1991-2011	Yes	Head of MFL
Purcell Jane	1996-	Yes	Head of Maths
Reader Carole (Hartley)	1991-2008		Head of Girls' PE
Riley Steve	2001-		RE teacher/Head of Farington House
Roberts Eis	1979-2011		Head of Music
Robertson Dave	1981-2007		Head of Science
Ruth Harrison	1979-2013		Cleaner for 34 years
Sanderson Barry	1974-1996		Maths teacher/Head of Clayton House Died 12 <sup>th</sup> February 1996
Saunders Jim	1983-2008		MFL teacher/Head of Worden House
Sharrock Mr. and Mrs.	1963-1983		Caretakers



Smith Gwyneth	1965-1994	Yes	Head of Home Economics
Smith Keith	1957-1994	Yes	Geography teacher/Head of Cuerden House
Snell Chris	1985-1999		PE teacher
Temmen Bernie	1990-2012		Site Manager
Thomas Vanessa	2001-		Head of Technology
Venn Jo	1995-2014		Headteacher
Wane Dave	1974-1995		Technology teacher
Warburton Carolyne	2001-		Science teacher
Waterston Pat	1975-2013		Cleaner for 38 years
Whittam Mo	2000-		Head of Drama
Woodcock Keith	1981-2006		Head of Physics / Exams Officer
Woods Dave	1979-2006		Head of History
Woods Pete	1995-2012		Technology teacher

**Past pupils who have returned to work in the school**

**(Not named above)**

Amanda Heyes (1997-2001)	Beth Jackson
Jamie Clark	Len Duckworth
Kathryn Waterston	Julie Catterall
Sue Makinson	Catherine Sinclair

**List of Speakers/ Prize distributors for Speech Night**

Year	Speaker
1981 (held Jan 1982)	Lord Robens
1982	Mr. Tom Sharratt
1983	Right Rev. Stewart Cross MA (Lord Bishop of Blackburn)
1984	Mr. Timothy Davis (Head Boy 1976/76, Robens Prize winner 1977)
1985 (held Jan 1986)	Dr. J. H. Lawton (Professor of Biology Univ. of York) (Head Boy 1961)
1986	C. J. Watkin (South Ribble District Education Officer)
1987	B. O'Connell (Principal of Runshaw College)
1988	J. Leadbetter LL.B (Chief Executive South Ribble Borough Council) (Old Balshavian)
1989	Olwyn Hocking (Editor BBC North West) (Old Balshavian 1967-74)
1990	Mr. Robert Atkins (MP for South Ribble and Minister for Sport)
1991	Dr. Catherine Bell (Head of Competition Policy Division DTI) (Old Balshavian, Robens Prize-winner 1969)
1992	Right Rev. Alan Chesters (Bishop of Blackburn)
1993	Andrew Rosbottam (Old Balshavian and Robens Prize-winner 1982)
1994	W. Deller (Senior Advisor/Inspector Lancashire education Authority)
1995	Mr. Paul J. Ingram (former Headteacher)
1996	Right Rev. Jack Nicholls A.K.C. (Bishop of Lancaster)
1997	John Vine (Assistant Chief Constable)
1998	Rev. Peter Ballard (Diocesan Director of Education)
1999	Dr. Frank Ryding OBE (British Red Cross worker)
2000	Chris Trinick MA B. Phil (Director of Education)
2001	Paul Robinson (Management Consultant) (Old Balshavian)
2002	Jimmy Armfield OBE (former Blackpool and England football captain)
2003	Vernon Kay (TV Presenter)
2004	Clarke Carlisle (Professional footballer) (Head Boy 1995/96)
2005	Mike Sheehan (Principal of Runshaw College)
2006	Caroline Clegg (Lancashire Woman of the Year 2005)
2007	Right Rev. Nicholas Reade (Bishop of Blackburn)
2008	Claire Hollister (former Head of MFL, Headteacher of Parklands High School)
2009	Tom Bidwell (Author and Scriptwriter) (Old Balshavian and L & B prize-winner)
2010	Lorraine Norris (Chief Executive Preston Borough Council)
2011	Alison Butterworth (BBC Radio Lancashire Presenter and parent)
2012	Phil Jones (Manchester Utd and England Professional footballer) (Old Balshavian 2003/08)
2013	Mr. Anu Ojha (Director of Education and Space Communications National Space Centre)



**Balshaw's Headmasters / Headteachers**

**1786-2014**

<u>Name</u>	<u>Date</u>
William Boyer	1786-1790
John Singleton	1790-1792
Stephen Hayhurst	1792-1799
Robert Kellett	1799-1850
George Bennett (Ass)	1846-1849
George Singleton	1849-1870
John De Pennington	1870-1899
James D. Wilde MA.	1899-1903
F. Jackson MA.	1903-1931
V. U. Oldland BA.	1931-1960
F. E. Bleasdale MA.	1961-1973
Paul J. Ingram BSc.	1973-1994 (Dec)
Miss Jo Venn BA.	1995-2014

**Head Boys and Head Girls 1981-2013**

Year	Head Boy	Head Girl
1981	Paul B. Rowe	Lindsay A. Draper
1982	Trevor N. Mather	Katherine L. Wilson
1983	Darren J. Lamb	Denise Worsley
1984	Derek E. Robinson	Lindsey C. Melling
1985	David P. Lowe	Karen L. Taylor
1986	Jason H. J. Williams	Catherine S. Ind
1987	Alistair J. Philp	Catherine J. Dennis
1988	Richard J. Noblett	Rachel S. Grounds
1989	Ian M. Lancaster	Caroline J. Furness
1990	Nicholas J. Route	Ester A. Grounds
1991	Anthony S. D. Bennett	Katherine E. Skeate
1992	Robert B. Knowles	Rachel C. Jackson
1993	David A. Williams	Catherine E. Cathey
1994	James E. Grant	Katherine A. Horne
1995	Clarke J. Carlisle	Stephanie H. Demack
1996	Christopher P. Crowe	Sally K. Hurst
1997	Stuart L. Howson	Rebecca J. Cathey
1998	Adam G. Smith	Caroline Eccles
1999	Antony Norman	Rachel Cook
2000	Tom M. Richards	Eve Kirkman
2001	Robert Longson	Lucia D. Westhead
2002	Kurtis D. Bell	Rachael A. Baxendale
2003	Liam P. St. John	Helen V. Morris
2004	Jonathan C. Gilmour	Katie A. Rigby
2005	Benjamin R. Lowe	Natasha Darr
2006	Stuart J. Humber	Lauren J. Ditchfield
2007	Alexander J. Villiers	Kathryn A. Alty
2008	David Dunwell	Lorna R. Matthews
2009	Jack W. Hepworth	Lucy E. Halsall
2010	Matthew J. Cragg	Lucy A. Rudd
2011	Alexander A. Kelly	Elizabeth J. Elleray
2012	Matthew J. Petinaud	Alice J. Russell
2013	Robert L. Armstrong	Jessica L. Pearson



**A List of Acronyms and terms used in the book**

Acronym	Meaning
ROSLA	Raising of the School Leaving Age
PTA	Parent's and Teacher's Association
YTS	Youth Training Scheme
Ofsted	Office for Standards in Education
LEA	Local Education Authority (Lancashire)
ICT	Information and Communication Technology
CDT	Craft Design and Technology
MUGA	Multi-purpose outdoor games facility
RE	Religious Education
PE	Physical Education
GNVQ	General National Vocational Qualification
TVEI	Technical and Vocational Educational Initiative
IT	Information Technology
DfEE	Department for Education a
GCSE	General Certificate of Secondary Education
BTEC	Business and Technology Council
SIAS	Statutory Inspection of Anglican Schools
IIP	Investors in People
FMS	Financial Management Systems
MFL	Modern Foreign Languages
STEM	Science, Technology, Engineering and Mathematics
TLR	Teaching and Learning Role (additional responsibility)
PCC	Parochial Church Council



**Balshaws C.E. High School**  
Church Road, Leyland, Lancashire PR25 3AH