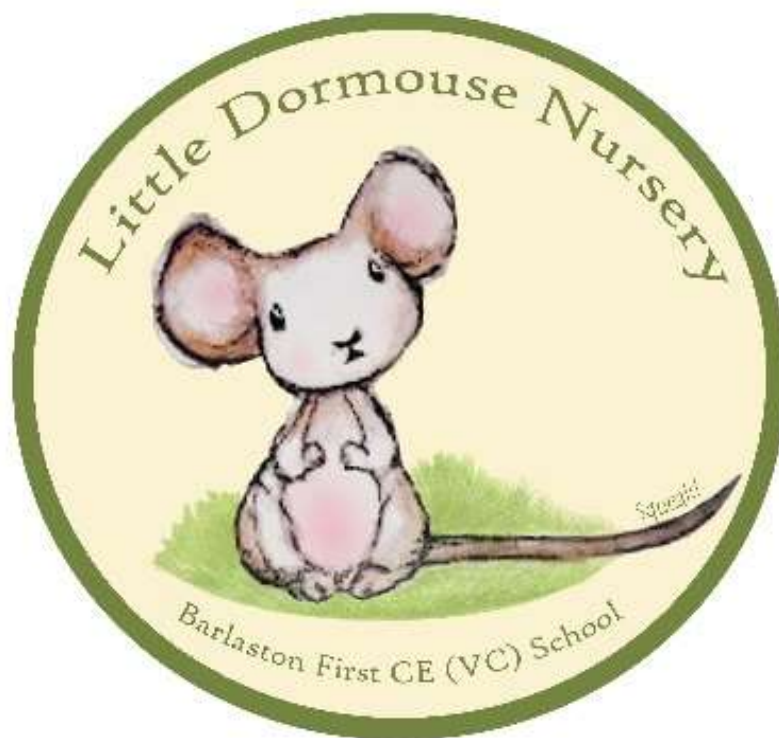


The Little Dormouse Nursery

'Let your light shine'

Matthew 5:16



Information Pack

A Warm Welcome to Our School

A very warm welcome to Barlaston First School from myself, Mr Gordon, the head teacher, all the staff, governors and of course, not forgetting the children.

If you are a new parent to our school, welcome aboard, and if you already have siblings in school, or have had, then an equally warm welcome to you.

The purpose of this booklet is to familiarise you with some important information that will help your child to settle into school, and to enable you to know routines etc that your child will become part of.

We are a very friendly, open and Christian school, where our school ethos is "Let Your Light Shine." This is reflected in both academic achievements, and equally so in social and emotional attitudes. We encourage the pupils to let their light shine through good manners, being polite, helping and caring for others.

We consider it essential to develop and celebrate the achievements of the whole child, rather than focusing just on their academic achievements, as you will see as your child moves through the school.

Please, should you have any worries or concerns, come and speak to either the Early Years staff, Mr Peel or myself, our doors are always open.

Best wishes,
John Gordon.



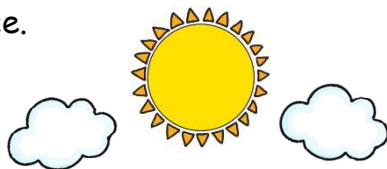
About Our School

- We have 6 classes. One nursery class, one reception class, and a class for year 1,2,3 and 4 pupils.
- The nursery class is called "The Dormouse Nursery" and the reception class is called "The Hedgehogs." The year 1 class is called "The Squirrels", the year two class is called "The Badgers", the year 3 class is called "The Deers" and the year 4 class is called "The Owls".
- The Early Years Department including the nursery class and reception class is run by Mr Peel. Mr Peel is also the nursery class teacher. Miss Hulme is the reception class teacher.
- There are three teaching assistants in Early Years, Mrs Kendrick, Miss Soanes
- We are a Church First School and many of our children join Christ Church Academy or Walton Priory Middle School at the end of Year 4.



Routines

- Please bring your child to the nursery building for 8:55am. The door is closed at 9:05am. If you arrive after this time, please ring the doorbell and a member of staff will let your child in. However, we politely ask that you arrive during these times to allow the children to arrive together, settle in before the register is taken.
- Our school day finishes at 3:00pm. You collect your child from this time at the nursery building. Pick up is between 3:00pm - 3:10pm.
- We provide wrap around care for nursery children.
 - Breakfast club from 7:45pm - 8:55am (in the main school hall).
 - After school club 3:30pm - 6:00 pm (in the main school hall)
- * *For more information about this please see the leaflet attached to this pack.*
- Holiday club is available during all school holidays and inset days, this will be sent out via the office.
- School newsletters are emailed every Friday and are also available on our website. They contain information about the week and important dates for following weeks.
- Early Years newsletters are also emailed out throughout the year.
- Other information specific to the class is displayed on the class noticeboard in the nursery building entrance.



Uniform

- School and nursery polo shirts, jumpers and cardigans with the school or nursery logo on can be purchased online from www.myclothing.com at a good price. Nursery uniform is a gold polo shirt with the nursery logo. Children can wear green cardigans or jumpers plain or with the school or nursery logo. However, it is not compulsory that uniform has a logo on it.
- For a small donation, pre loved uniform can be purchased from the main reception, or speak to your class teacher.
- In the nursery class your child will *not* need a PE kit until the Summer term before they start in the reception class. You will be notified when this is required. In the summer term PE kits will stay in school and returned at the end of the half term.
- We would like to make the most of our lovely outdoor facilities. Please provide your child with a pair of wellingtons (to stay in school) so we can have fun in all weathers! Also please send your child in a coat every day, and hats and gloves in cold conditions. We like to go outside whatever the weather!
- Please can all items have your child's name in them, including PE kit, wellies and coats.
- It would really help us if you could teach your child how to fasten/zip up his/her coat.



General information

- Please ensure you return all the necessary pupil information and parental declaration forms. They are essential and please notify us of any changes. e.g. change of address, new mobile number.
- We ask that you keep us informed who will usually be collecting your child. If someone different is collecting your child, please let us know.
- Should there be a change in home circumstances please inform us so we can best support you and your child's emotional wellbeing.
- If your child requires medicine, please try to ensure it is given before and after school. If required during the school day a medical form will need to be completed.
- In Early Years children learn through play. There will always be a focus on physical, personal, social and emotional and communication and language development in the first term. They will also learn literacy, maths, understanding the world and expressive arts and design. The children will be taught through individual, group and class teacher led inputs and through child choice activities. The topics and 'big questions' for each term will be on the school website.
- All nursery and reception children have free milk at school until their 5th birthday. Milk or water is given to drink during the morning snack, if you have preference for your child please speak to a member of staff.



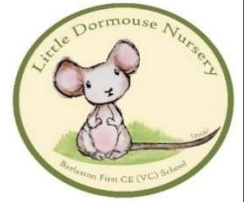
General information (cont)

- A healthy snack of fruit and wholemeal toast can be purchased for nursery children during the morning snack. If your child stays for the afternoon a fruit snack and a drink of water is provided all of this is free of charge. There is no need to send a water bottle in the nursery class.
- In the nursery class the teachers eat lunch with the children and encourage children to eat a variety of food including healthy choices of fruit and vegetables. They will also help them to become independent eaters ready for reception class next year. Hot lunches are made in our school kitchen.
- Throughout your child's time at first school, it is possible that they may have disagreements with their friends. If your child is coming home from school expressing that they have had a fall out with a friend, please let us know so that we can resolve the issue, rather than speaking to the other child or parents directly.

Once again a warm welcome and we look forward to working with both you and your child!



Nursery Wrap-around Care



30 hours funded places

Monday - Friday 9:00am-3:00pm

- 7:45am-9:00am £6.00 (Including breakfast)
- 3:00pm-3:30pm £3.00
- 3:30pm-4:30pm £5.00
- 4:30pm-5:45pm £6.50 (Including a snack, e.g. sandwich)
- 5:45pm-6:00pm £1.50

15 hours funded places

Monday - Friday 9:00am-12:00pm

- 7:45am-9:00am £6.00 (Including breakfast)
- 12:00pm-12:55pm £3.00
- 12:00pm-3:00pm £15.00 (Including a fruit snack)
- 12:00pm-3:30pm £18.00 (Including a fruit snack)
- 3:30pm-4:30pm £5.00
- 4:30pm-5:45pm £6.50 (Including a snack, e.g. sandwich)
- 5:45pm-6:00pm £1.50

Non-funded places

- 7:45am-9:00am £6.00 (Including breakfast)
- 8:55am-12:00pm £18.00
- 8:55am-12:55am £21.00
- 12:00am-3:00pm £18.00
- 9:00am-3:00pm £36.00
- 9:00am-3:30pm £39.00
- 3:30pm-4:30pm £5.00
- 4:30pm-5:45pm £6.50 (Including a snack, e.g. sandwich)
- 5:45pm-6:00pm £1.50

Snacks and Lunch

Hot lunches can be ordered daily for your child for a cost of £3.19

A slice of toast is provided for your child for the half term for £10.50

Milk, drinks and afternoon snacks are included free of charge.