

Welcome to the Little Dormouse Nursery

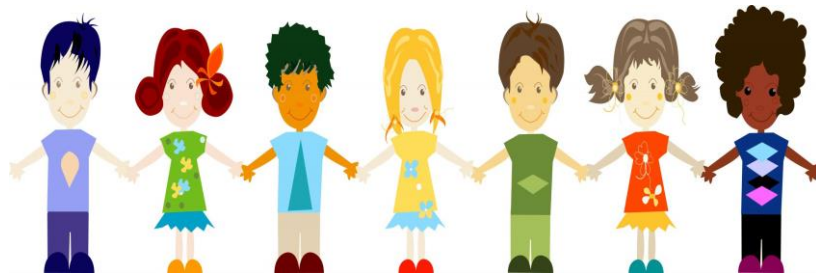




About Our School

- We have 6 classes. One nursery class, one reception class, and a class for year 1,2,3 and 4 pupils.
- The nursery class is called "The Dormouse Nursery" and the reception class is called "The Hedgehogs." The year 1 class is called "The Squirrels", the year two class is called "The Badgers", the year 3 class is called "The Deers" and the year 4 class is called "The Owls".
- The Early Years Department including the nursery class and reception class is run by Mrs Jackson. Mrs Jackson teaches in nursery class every morning and some afternoons in the nursery and reception class. Mr Peel is the reception class teacher.
- There are four teaching assistants in Early Years, Mrs Kendrick, Mrs Fox, Miss Leese and Mrs Haddrell.
- We are a Church First School and many of our children join Christ Church Academy at the end of Year 4, though an increasing number are choosing Walton Priory Middle School.





Information and Routines

- In Early Years children **learn through play**. There will always be a focus on physical, personal, social and emotional and communication and language development in the first term. They will also learn literacy, maths, understanding the world and expressive arts and design. The children will be taught through individual, group and class teacher led work and through child choice activities. The topics for each term will be on the school website.
- School and **nursery polo shirts**, jumpers and cardigans with the school or nursery logo on can be purchased online from www.myclothing.com at a good price. Nursery uniform is a gold polo shirt with the nursery logo. Children can wear green cardigans or jumpers plain or with the school or nursery logo. School book bags can be purchased, with the school logo on if required, online at www.myclothing.com We also have some second hand uniform you can purchase from us for a donation to school funds.
- In the nursery class your child will not need a PE kit until the summer term. You will be notified when this is required. PE kit is a white t shirt, black/blue shorts and pumps. PE kits would be better in a soft drawstring bag, which we can store easily. In the summer term PE kits will stay in school and returned every half term or as needed for washing.
- Because we want to make the most of our lovely outdoor facilities, we would be very grateful if you could provide your child with **a pair of wellingtons** (to stay in school) so we can have fun in all weathers! Also please send your child in a **coat every day**, and hats and gloves in cold conditions. We like to go outside whatever the weather!
- Please can all items have your child's **name** in them.
- It would really help us if you could teach your child how to **fasten/zip up his/her coat**.
- Should your child require **medicine**, please try to ensure it is given before and after school. If required during the school day a medical form will need to be completed.



- All nursery and reception children have **free milk** at school until their 5th birthday. Milk or water is given to drink during the morning break.
- A healthy **snack of fruit and wholemeal toast** or crumpets is provided for nursery children during the morning break free of charge. If your child stays for the afternoon a fruit snack and a drink of water is provided free of charge. There is no need to send a water bottle in the nursery class.
- In the nursery class the teachers eat **lunch** with the children and encourage children to eat a variety of food including healthy choices of fruit and vegetables. They will also help them to become independent eaters ready for reception class next year. Hot lunches are made in our school kitchen and can be purchased on schoolmoney.co.uk
- Nursery class will receive a **monthly newsletter** with updates and information. **School newsletters** are also available on our website. They contain information about the coming week and important dates for following weeks.
- Please ensure you return all the necessary **pupil information** and **parental declaration** forms. They are essential and please notify us of any changes. e.g. change of address, new mobile number. Many thanks.
- Please keep us informed who will usually be **collecting your child**. If someone different is collecting your child, please let us know.
- Should there be a **change in home** circumstances please inform us, we are not wanting to know your business, but any changes may well have an effect on your child's emotional well being.
- We provide **wrap around care** for nursery children from 8.00am -6.00 pm. Times and price information is provided on the following sheet or the school website. Nursery children can be dropped off and picked up from the nursery entrance at these times.
- Any concerns please do not hesitate to come and talk to the nursery staff.

A Warm Welcome to Our School

A very warm welcome to Barlaston First School from myself, Mrs Clarey, the head teacher, all the staff, governors and of course, not forgetting the children.

If you are a new parent to our school, welcome aboard, and if you already have siblings in school, or have had, then an equally warm welcome to you.

The purpose of this booklet is to familiarise you with some important information that will help your child to settle into school, and to enable you to know routines etc that your child will become part of.

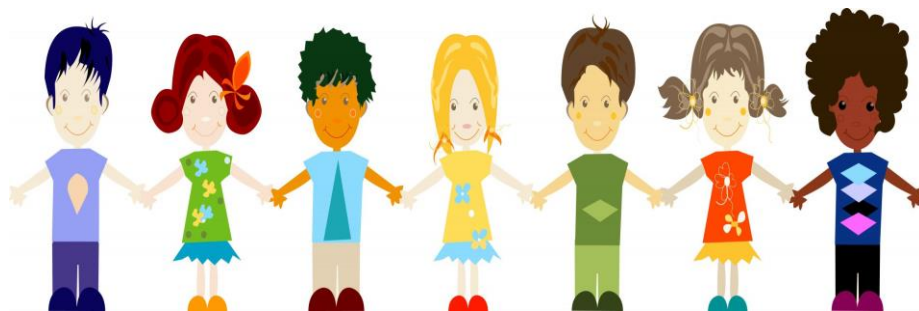
We are a very friendly, open and Christian school, where our school ethos is "Let Your Light Shine." This is reflected in both academic achievement, and equally so in social and emotional attitudes. We encourage the pupils to let their light shine through good manners, being polite, helping and caring for others.

We consider it essential to develop and celebrate the achievements of the whole child, rather than focusing just on their academic achievement, as you will see as your child moves through the school.

Please, should you have any worries or concerns, come and speak to either the staff in the nursery class, Mrs Jackson or myself, our doors are always open.

Best wishes

Mandy Clarey



Nursery Wrap-around Care

15 hours funded places

Monday – Friday 9:00am- 12:00pm

Extra hours are available for 15 hours funded children, offering further opportunities to learn through play and exploration.

- 8.00am – 9.00am **£5.00** (Including breakfast)
- 12.00 - 12.30pm **£5.00** (Including a **hot lunch**)
- 12.30 - 3.30pm **£15.00** (Including a fruit snack)
- 3.30 - 4.30pm **£5.00**
- 4.30 - 5.30pm **£5.00** (Including a snack, e.g. sandwich and soup)

30 hours funded places

Monday – Friday 9:00am- 3:00pm

Extra hours are available for 30 hours funded children, offering further opportunities to learn through play and exploration.

- 8.00am – 9.00am **£5.00** a day (Including breakfast)
- Hot lunch **£3.00** a day
- 3.00 - 3.30pm **£2.00** a day
- 3.30 - 4.30pm **£5.00** a day
- 4.30 - 5.30pm **£5.00** (Including a snack, e.g. sandwich and soup)

All nursery wrap-around care, including meal times, will be provided in the nursery building and supported by Early Years staff.

You can book and pay for wrap around care via School Money at www.eduspot.co.uk. You will receive a login code for your child once they start nursery. Childcare vouchers are accepted.

