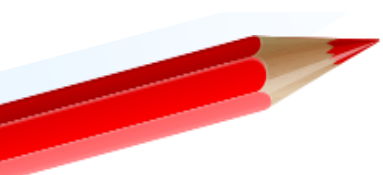




# Birdsedge

First School

## School Prospectus



**Ofsted**  
Good  
Provider



# Welcome

Choosing a first school for your child, we know is such an important decision for families. It can create the foundations of their future education and provide the building blocks they need for both school and wider life.

We aim, through our prospectus, to give you the confidence to entrust the staff and governors of Birdsedge First School with the privilege of offering this education so that, in partnership with yourselves, we can ensure success and a love of lifelong learning.



*"Teachers make sure that pupils have the knowledge and skills they need to be successful"*

*"Pupils value difference and treat everyone with the same level of respect"*

Birdsedge is a small, rural school on the outskirts of Huddersfield. The school is set in a beautiful location, surrounded by countryside and with wonderful grounds belonging to the school itself - something that hugely attracted me to the school and post of Headteacher here. A huge lover of the outdoors, the opportunity to be surrounded by nature every day is a real privilege.

At Birdsedge First we pride ourselves on being *The Small School with the Big Heart*. Our caring, nurturing, child centred ethos is what makes us special. With only three classes and our own bespoke resource provision to support children with SEND, we really do know every child exceptionally well and can cater to each child's very individual needs. Birdsedge First School has a real family feel and an atmosphere which gives children the confidence to flourish and shine. We stay loyal to our ethos of being Birdsedge BEST. Bringing the BEST of everything to every person who is a part of our school.



Miss D Barker  
Executive Headteacher

Birdsedge First School converted to an Academy as part of the Mast Academy Trust in December 2016. Currently there are five schools in the Trust and we work collaboratively to support our aim of creating amazing learning opportunities for our children and for generations to come.

As a Trust we want to support everyone to be the change they wish to see in the world. We understand that this is not about grand gestures, it's about helping individuals. Through a constant drive to enrich and develop our people, we can create a group of schools capable of achieving this goal. We will remember this in everything we do, everything we say, every action we take, everything we promote. By keeping this focus, we aim to be an influential contributor to the world of education and an example to others.

Putting children at the heart of everything we do is not just a tokenistic statement.

"Leaders are ambitious for every pupil"  
Ofsted 2022



Proud to be part of  
The Mast Academy Trust





# Our school ethos

Everything we do at Birdsedge First School is driven by our firm belief that every person through our door deserves the best of everything. We strive to be Birdsedge BEST for all our pupils, families and staff.

We want to give our children **Brilliance** in their knowledge through a broad and balanced curriculum. We aim to provide **Excellence** in every child's education by making sure lessons are consistent and use strong and high quality teaching.

Through both of these aspects we hope that children will enjoy 'learning to learn' by developing basic skills, knowledge, concepts and values through discreet subjects. We also hope children develop curiosity, enquiry, resilience and an openness to new ideas.

We want all children to be **Successful** in their wider lives both now and in the future due to the knowledge, skills and experiences we give them. We want our children to be unique individuals who celebrate their own place in a diverse community and wider world. Community involvement and local knowledge and traditions will have an active role in this.

Ultimately, we want all of this to happen in a safe, positive and inclusive school culture where every child feels safe and happy through the **Trust** we have in each other. Our children should leave Birdsedge First with a sense of belonging and a confidence for decision making that helps them to be lifelong learners and ready for their next stage in education.



"Pupils live up to their school motto, 'Birdsedge Best', in everything they do"

Ofsted 2022

# The school day

Children are arranged in three classes, each with a full time teacher but school also has a full time additional resource provision for children requiring additional support, intervention or a more specialised curriculum.

We also value the opportunity for 'family groups' or mixed aged enrichment opportunities. Our 'Forest Friday' afternoons see children working together in year groups from across school. Enabling older children to lead and support younger children. Our whole school 'House' system also supports and enhances this with weekly House Challenges and 'House Family' enrichment time.

Twenty-two and a half hours are spent on teaching during the normal school week. This includes religious education, but excludes the assemblies, registration and breaks including lunch. We open our doors at 8:45am where children can settle in with consistent and supportive morning routines and registers are closed at 8:55am. The school day finishes at 3:30pm with extra curricular clubs running every day until 4:30pm.



**Class 1** – Reception and Year 1

**Class 2** – Year 2 and Year 3

**Class 3** – Year 4 and Year 5

**The Den** – Specialised Resourced Provision for children with Language and Communication Needs

**The Snug** – Pastoral, nurture provision for children with Social, Emotional and Mental Health Needs





# Ofsted

## Overall Effectiveness: Good

The Quality of Education: Good

Behaviour and Attitudes: Outstanding

Personal Development: Outstanding

Leadership and Management: Good

Early Years Provision: Good

OFSTED describe Birdsedge First School as a school where all pupils live up to their school motto, **'Birdsedge Best' in everything they do**. Where pupils behave extremely well, are kind and respectful and do their best to support each other. This is supported in the way **'staff set an example of kindness and respect that encourages pupils to behave exceptionally well'**.

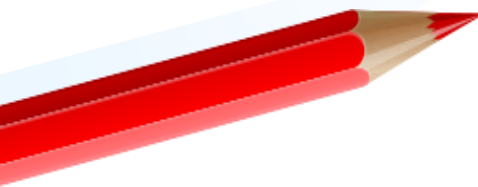
Leaders are described as **ambitious for every pupil**, including those with Special Educational Needs and/or Disabilities (SEND). A school where staff want everyone to be successful learners and with a curriculum that is carefully planned to achieve this.

Leaders, Governors and Staff are collectively recognised for their hard work in providing the best all-round education for every pupil through an interesting and ambitious curriculum that is broken down into small steps so that pupils can build knowledge and skills over time.

The schools love of reading is recognised in the way that leaders leave **'no stone unturned in getting pupils excited about books'** and phonics and reading is taught in a way that makes sure pupils enjoy reading with confidence and fluency.



Ofsted  
Good  
Provider



Birdsedge First School is committed to ensuring the welfare and safety of all children in school and follow the Kirklees Safeguarding Children Board procedures. Should you wish to discuss Safeguarding and Child Protection our Designated Safeguarding Lead is Miss Barker (Executive Headteacher). In her absence, the deputy safeguarding lead is Miss Hutton (Assistant Headteacher).



Miss K Hutton



Miss D Barker

*"Pupils with SEND receive the care and support they need to thrive"*  
Ofsted 2022



# Inclusion

As a school we strive to meet the needs of individual pupils and take a multi-agency, working together approach to ensure that the best provision possible is in place for all children. We believe that every child has the right to a fulfilled education and strive to make this happen for all. We work with families and other agencies to ensure any additional needs are supported and regularly review provisions to ensure this is personalised and appropriate to individual needs. The school updates its accessibility plan regularly and the Governing Body ensures that this is implemented. The school has wheelchair access and a disabled toilet. We ensure equal opportunities by updating the curriculum, support and the physical environment.

At Birdsedge First school special educational needs can be met in a number of ways:

- Classrooms organised to encourage independence;
- Work is planned to meet the needs of the child;
- Additional support may be given;
- Staff may use a different teaching method;
- The child may use special equipment;
- More time may be allocated for the child to complete an activity.
- Access to our more specialised provision spaces

Overall though, we strongly believe that every teacher is a teacher of SEND and invest in continuous professional development for staff in how we can meet a range of neurodiverse, communication and social and emotional needs in our everyday Quality First Teaching.

The school SENDCo is Miss Katie Hutton



# The curriculum

We follow the **National Curriculum** for children in Years 1 - 5 and the Early Years Foundation Stage Framework for Reception.

**Reading** is at the heart of our curriculum with both explicit teaching of decoding, fluency and comprehension as well as creating a Reading Rich culture, so that a real love of reading is enabled, balanced with children who have the skills to be lifelong readers and access their wider curriculum fully.

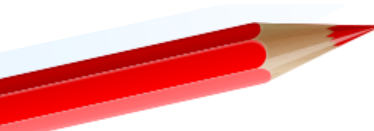
For the Humanities subjects of **Geography and History** we ensure children take a journey around the world and back through time as they move through school. This is planned with progression at the heart, making sure children learn more and remember more year by year, always revisiting and building on studies from the year before.

*"Leaders leave no stone unturned in getting pupils excited about books"*

Ofsted 2022

Our **Writing** curriculum is also strongly linked to Reading with a bank of linked texts and stimuli for teachers to choose from.

All other key subjects in the curriculum: **Religious Education, Personal, Social and Health Education, Physical Education, Computing, Music, Art and Design and Modern Foreign Languages** are taught discreetly with links where appropriate to the themes described above, so that learning is outcome focused. We aim to enhance as many of the topics across school with trips, enrichments and experiences.



*"Leaders have broken the ambitious and interesting curriculum down into small steps"*

Ofsted 2022



# PSHE and SMSC

As a school we follow the Kirklees **Religious Education** curriculum, covering the 6 main religions. We also try to celebrate and acknowledge key religious festivals throughout the school year as these happen. The school does have strong links with local churches and the chapel as part of its community work. We have half termly visits from our local Reverend to lead collective worship in school and sometimes visit the Chapel for celebrations such as Harvest, Christingle and Easter.

At Birdsedge First School we really do believe that our BEST classroom is the one outside. We are incredibly enthusiastic towards **outdoor learning** and stay committed to daily outdoor learning for our youngest children in our Outdoor Continuous Provision and at least weekly for our older children. We are very lucky to have rich outdoor spaces in school with a field, pond, woodland and recent developments of an allotment.

Our weekly 'Forest Friday' sees children working together in mixed aged groups through our six Outdoor Learning themes.

*Working Together. Being Adventurous.  
Problem Solving. Our Place in the World.  
Our Environment. Our Wonderful World.*

At Birdsedge First School we stay loyal to ensuring that our **Personal, Social, Health and Economic (PSHE)** curriculum is not just a series of 'one-off' stand-alone lessons. Instead we ensure that the core values and concepts wrap around everything we do. Overarching our whole curriculum are key themes that support children's personal, social and emotional development - these are drivers for whole school assemblies, house point challenges and generally wrap around everything we do in school that half term. The six themes are:

*We are Respectful. We Belong. We are Safe.*

*We are Happy. We are Responsible. We are Inclusive.*

Other whole school enhancements to our PSHE curriculum include:

- Having an active School Council with weekly meetings and class council sessions;
- Whole school behaviour system based on a coaching tool;
- Weekly PSHE assemblies with linked challenges and activities;
- Themed weeks and days linked to wider initiatives and awareness raising;
- A school culture focused on developing children's personal, social and emotional skills in every conversation and interaction.

As a school we follow the PSHE Association Programme of Study and follow the DfE Relationship Education and Health Education statutory guidance to ensure curriculum coverage through our six half termly key themes. Parents have the right to withdraw their children from Sex Education.

# Extra Curricular

We believe that offering an enriched curriculum develops the whole child and makes education truly fulfilling. Each month of the school year sees a 'Subject Spotlight' where there will be a focus on this area of the curriculum and enrichments planned in different ways such as trips, in school experiences or family events.



## Autumn Term 1 Extra Curricular Clubs

Here are the Extra Curricular Clubs on offer for Autumn Term 1 running for a 6 week block starting week beginning Monday 8<sup>th</sup> September and Running until Friday 17<sup>th</sup> October.

Time	Monday 12:15pm – 12:45pm	Tuesday 12:15pm – 12:45pm	Wednesday 12:15pm – 12:45pm	Thursday 12:15pm – 12:45pm	Friday 12:15pm – 12:45pm
Club	Sports Club – Competition Focus	Sports Club – Striking and Fielding	Sports Club – Invasion - Hand	Sports Club – Multi Skills	Sports Club Football Knit and Chat

Lunch Time Clubs and Wake Up Shake up are free and open to all. These will be booked in school time with the children. Children attending a competition need to come to the Monday Lunch Club prior to their competition.

Time	Monday 8:40am – 8:55am	Monday 3:30pm – 4:30pm	Tuesday 3:30pm – 4:30pm	Wednesday 3:30pm – 4:30pm	Thursday 3:30pm – 4:30pm	Friday 3:30pm – 4:30pm
Club	Wake Up Shake Up DB	Gymnastics	Art Club SB	Bushcraft LToB	Sports Camp	Games Club KH

After School Clubs are £5.50 per session and need to be booked through Parent Pay. These will be shared in the half term ahead so bookings can be made – look out on Parent Pay in September for these going live. Places are limited and booking options will disappear once all places have been taken.

More widely than the school day, at Birdsedge we try to offer a very exciting programme of Extra Curricular Activities including lunch times. Our **After School Clubs** vary with a planned schedule over the year to try and reach all ages, interests and skills. Above is a sample of what a half term offer looks like and other areas we include are Dance, Choir, Science, Music, Drama and Gardening. We communicate with parents each term and keep our website up to date with current clubs that children may book on to if they wish. For those children in receipt of Pupil Premium we work with families to support with the cost of clubs too.

There are also opportunities for competitive games to be played against other small schools in the pyramid throughout the year through our engagement in the Pyramid Sports.

Peripatetic music lessons are another **extra-curricular offer**, through the school music service.

# Wrap Around Care



Mrs Taylor O'Brien  
Manager

Mrs Nightingale  
Playworker



We have a well-established **Out of School Club** open to all families. The club offers great flexibility for parents who are endeavouring to balance their own work commitments with low cost, well structured, childcare. Out of School Club hours are 7.30 am - 8.45am and 3.30pm - 6.00pm.

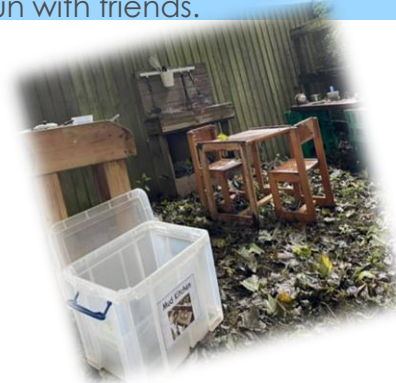
All staff work within school during the day too which means the club provides a very fluid and nurturing extension of the school day for children.



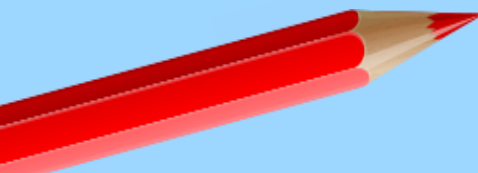
Breakfast is provided at every morning session and a light evening snack every after-school session. All dietary requirements can be catered for and juice and fruit is always available.



We aim to provide a nurturing and play based provision that all children can enjoy together. Both indoor and outdoor play is available for children to have fun with friends.







At Birdsedge First School we aspire to provide the BEST of everything for every person. Encouraging BEST behaviour is an important part of this. As a school we encourage self-discipline, a pride in being part of our school team and a sense of responsibility and respect for ourselves and each other. We reward good behaviour in a variety of ways, including house points, weekly special mentions and personalised class reward systems. We keep our school rules clear and simple so they are accessible to all and link them to safety, welfare and consideration for others.

Together, with our children, we have four agreed 'Birdsedge Behaviours' that we ask everybody in our school to have. These are reinforced through individual class rules, reminded as part of weekly assemblies and encouraged and rewarded by all staff.

When starting Birdsedge First School children are put into a family 'House'. A team of children across all school ages who work together to earn points for weekly challenges linked to behaviours and attitudes. Weekly the winning house is shared and celebrated with a half termly reward time to work towards.

We focus on positive behaviours at Birdsedge and use the systems outlined above to encourage, motivate and reward children. With this though, we have an agreed stepped consequences approach to correcting behaviour should a child behave inappropriately. This is designed around a coaching model, with each step being there to help children make the right choice. If necessary, parents will be contacted to agree a joint approach to addressing behavioural needs that are not being met through this stepped approach. Through this we would aim to create a personalised plan to support behaviour and review regularly to ensure success and the correct intervention.



## Behaviour and Wellbeing



*"Pupils, parents and staff say  
that there is no bullying at Birdsedge."*

Ofsted 2022

We have a passion for Early Years at **Birdsedge First School** and aim to make links with younger children and their families as soon as we can. Every Tuesday morning, we run a free 'Tree Tots' Session. A fun outdoor Forest School play experience for 2-4-year-olds and their parents or carers.



## Tree Tots

## Tuesdays in Term Time

## 9:15am – 10:15am

Entrance Via the white school gate on Birdsedge Lane  
Open and free to all 2 – 4-year-olds and a parent or carer.

No booking needed.

# Uniform

School Uniform	PE Kit
Royal blue sweatshirt/cardigan	White t-shirt (no collar)
Grey trousers/ shorts or skirt/ pinafore dress.	Black/Navy shorts or skorts
Polo shirt with collar, in white	Pumps or trainers
Royal blue or yellow summer dress. (checked/striped)	Plain dark coloured jogging suit/tracksuit for outdoor use.
Black school shoes – not coloured shoes, trainers or boots above the ankle	For safety reasons we ask that jewellery is not worn and that long hair is tied back

School Book Bags are available to purchase from school at £6 each



We run a constant Uniform Swap Shop in the school office – we appreciate outgrown uniform in good condition donated to school at any time in the school year. These are then available to view on the clothes rack in the office and taken should you need anything.

We ask that children come to school dressed in PE kits on their two PE days each week



# THE FOOD EXPLORERS



Our School Meals are cooked onsite in our own school kitchen led by Hutchinson Catering Firm.

In September 2014 the Government introduced Universal Free school meals for all foundation and Key Stage 1 children. After this School Meals are charged inline with Kirklees rates.

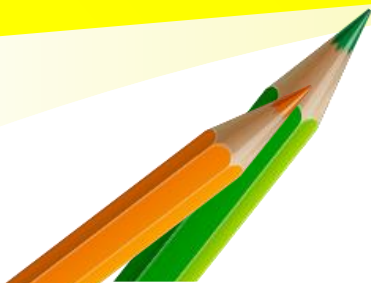
Children may instead bring a packed lunch, a plate and drink are always provided if needed.

Up to the age of 5 children currently receive **free milk** under the Government Nursery Milk scheme. Pupils who partake in the 'Milk in Schools Scheme' (available up to the end of the school term before they are seven) benefit from a subsidy from the Intervention Board. This represents a significant reduction in the actual cost of milk. If you want your child to have milk it can be ordered and paid for each term. Milk is also available for children in Key Stage 2, but without a subsidy.

Research suggests that when children become dehydrated it directly affects their concentration and thinking skills, so children are encouraged to have a **water bottle** in their classroom, which they can fill up at any time, with all classrooms having their own sink. Children are allowed to bring a **snack** for morning playtime. As part of our healthy school standard we aim to make morning snacks as healthy as possible. Having taken advice from the British Nutrition Foundation, they suggest the following foods would give children a choice, yet do not increase their sugar & salt levels to too high a level:

- Fruit and vegetables – fresh or dried fruit, carrot/ celery sticks etc;
- No chocolate bars, cereal bars, crisps or sweets allowed.

Key Stage 1 pupils are given free fruit every day as part of a Government initiative.



# Partnership with Parents



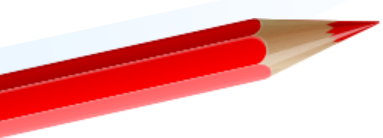
All parents and those associated with school are welcomed into the 'Friends of Birdledge' organisation and encouraged to take part in its activities. The group endeavours to plan a full and varied programme of activities throughout the year to raise funds for the school. The money we raise is used to benefit all the children in school, for example developing our outdoor area or subsidising trips.

The Friends of Birdledge Association is very active. Each term they organise and support a wide range of activities, both during school time and in the evenings. Some are social, creating a real sense of community, and others raise money for school funds.



Parents are every child's first educators and at Birdledge First we know how important your support is in ensuring that your child feels secure and achieves success in school. We believe that by working together we will understand and develop children in the BEST way we can and value a strong partnership of working together. We hold two parents meetings through the school year and provide an annual report, with an invitation to be followed up with a meeting should this be needed. In addition to this, however, any concerns parents have are always welcome and encouraged to be shared with teachers. We too will contact you if ever we feel that any difficulties in progress, behaviour or emotional wellbeing exist.

We are proud of the family feel and ethos we create at Birdledge First School and open our doors to wider families as much as possible. Parents join us for our weekly Friday celebration assembly and half termly classes provide a Class Assembly to share their learning from that half term. Other events such as fairs and concerts are also valued and attended well by families.





**Sian Hyett-Allen**  
Chair of  
Governors  
Community



**Becky Barrett**  
Governor  
Parent



**Alice Lowe**  
Governor  
Parent



**Karen Howgill**  
Governor  
Community



**Rebecca Breeze**  
Governor  
Staff

# Governance

The Governing Body is delighted to welcome you to Birdsedge First School! As the school's governors, we've seen many positive changes here at Birdsedge since 2020, and we're all pleased to be able to share with you the great things that the school's been achieving. Our current team of governors brings a real commitment, energy and drive to ensure that our children are supported to be their Birdsedge BEST.

We should mention first and foremost that we are really fortunate in our Headteacher, Donna Barker - whose drive, enthusiasm and commitment is contagious and whose vision for the future for our pupils, families, staff, ourselves, and local community is truly exciting. Alongside her hard-working staff, she has achieved remarkable things during these recent times, including steering our school through the choppy waters of the pandemic in 2020 and 2021.

How do we ensure effective and accountable governance within Birdsedge First School? We continue to fulfil our duties through meetings and we still have lively debate and discussion. As we emerged from the pandemic we have started to spend time at school again, meeting children, parents and staff, we will continue to ensure strong governance at Birdsedge by monitoring, questioning, challenging and, ultimately, supporting the school. Questions we have asked and will continue to ask include:

- How does the Birdsedge BEST vision underpin everything we do for all pupils and stakeholders of the school?
- Is there continued implementation of an ambitious, inclusive, broad and balance curriculum to ensure pupils are receiving their entitlement for quality education? What questions can and should we ask of senior leaders to seek confirmation of pupil attainment and progress of teaching and learning?
- How is everyone in school feeling? How can we support and help? (our important focus on everyone's Wellbeing)
- How do ensure we continue to guarantee a voice for all is accepted and heard so we can work collaboratively to strive to improve and flourish as a school?





## Partnership School

Since September 2024 we have been working closely with Grange Moor Primary School in an Executive Leadership model. Grange Moor is GREAT and a similar small school to Birdsedge with small but mighty at the heart of everything it does.

Working together we have been able to grow capacity across the two schools bringing added resource to children in both settings, a wider support network for staff and strengthen leadership by growing shared curriculums and subject specialists across the two schools.



### To contact the school

Telephone: 01484 605441

Miss Barker email [dbarker@themast.co.uk](mailto:dbarker@themast.co.uk)

### To find out more

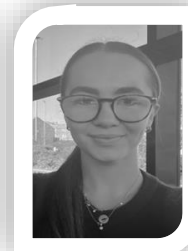
Website: [birdsedgefirst.org/](http://birdsedgefirst.org/)

Facebook: [facebook.com/birdsedgefirstschool](https://facebook.com/birdsedgefirstschool)

Twitter: @birdsedgefirst



**Miss Barker**  
Executive  
Headteacher



**Miss Laycock**  
Class 1 Teacher



**Miss Hutton**  
Class 3 Teacher  
Assistant Headteacher



**Miss Grice**  
HLTA



**Mrs Taylor O'Brien**  
OoSC Manager  
Forest School Leader



**Mrs Nightingale**  
Educational Support  
Assistant



**Mrs Gilbert**  
Educational Support  
Assistant



**Mrs Caven**  
Educational Support  
Assistant



**Mrs Eynon**  
Educational Support  
Assistant



**Mrs Metcalfe**  
Business Support  
Assistant



# Birdsedge

## First School