





# CONTENTS

3

welcome from  
the principal

4

about us &  
our awards

6

our values &  
what makes us  
different

8

our teachers,  
results &  
growth

17

enrichment

20

our courses

61

getting to  
College

62

financial  
support

63

how to  
apply



# WELCOME

There are many ways to define success but I am confident that whichever one you might choose, we meet and surpass it. For an academic institution it would seem obvious to start with outcomes - and in these we excel. Independent analysis (Sixth Form Colleges Association Six Dimensions 2024) has shown that we are within the top five academic sixth form colleges nationally. We might take a slightly broader range of students than selective schools, but our outcomes are not bettered locally and are barely matched by any other institution nationally.

I do not want to dwell on academic outcomes, as an education has to be so much more, but in simple outcome grades, students will have unrivalled success in choosing this sixth form college.

The reasons for our success are complex and detailed but in essence can be summed up in a single sentence:

***We teach well, build confidence and resilience and attend to every detail.***

We will provide the detail and direction, the appropriate work and support and we will accurately and honestly assess at every step. We work towards continual improvement and we know how to ensure our students do so.

The consequence of all this is that our students have unrivalled success with the next steps they take. We get unusually high proportions into the best universities, and that really matters, we secure a good level of apprenticeships and our specialist careers team support students directly into work.

However, we are also a vibrant community, with lots of opportunities for new experiences. We are a safe and supportive environment but one that allows for the next tentative step on life's journey. Perhaps most importantly, students enjoy being at the College. They work hard, have a new sense of maturity and do all of that knowing they will be supported in securing their future.

**I am very proud of what we have created here over the years. We might have once been a second choice for some, but we have become the obvious first choice - not because we trade on our reputation - but because every year we succeed, and that means that our students succeed.**



**Mike Kilbride MBE**  
Principal





# ABOUT US

We're ranked in the TOP 5 Sixth Form Colleges in the country.  
Here's why:

We are locally unrivalled **centre of academic excellence**

We offer exceptional levels of **pastoral support**

We are a sector leader in achieving **high quality university destinations**

We do not process students, **we develop people**

A Levels are hard & students are **taught & supported by specialists**





# OUR

# AWARDS

  
**Ofsted**  
Outstanding  
Provider

Birkenhead Sixth Form College's status as an Outstanding education provider has been reconfirmed in Ofsted's latest inspection report, released in June 2024.

Our sixth form experience stands out for its unique approach that nurtures academic excellence and personal growth.



MOST  
**INSPIRATIONAL**  
SIXTH FORM

MOST INSPIRATIONAL  
SIXTH FORM  
*Educate North*



COLLEGE OF THE YEAR 2023  
*Educate North*



BEACON AWARD FOR SOCIAL  
MOBILITY AND WIDENING  
PARTICIPATION  
*Association of Colleges / TES*



AWARD FOR SOCIAL MOBILITY  
*Educate North*



SIXTH FORM  
COLLEGE OF THE  
YEAR  
*TES*



OUTSTANDING GCSE  
RESIT PROVISION  
*TES*



SOCIAL MOBILITY AWARD  
*Sixth Form Colleges Association*

To see all of the awards that the College has won, please visit: [www.bsfc.ac.uk/our-awards](http://www.bsfc.ac.uk/our-awards)



# OUR

# VALUES

**Our values run through everything we do every day.**

Both staff and students exemplify the four values and they influence each and every interaction that we have.

we are

**POSITIVE**



**we are positive about what we can do and what others can do**

we are

**AMBITIOUS**



**we work to release the innate human drive for success**

we are

**RESILIENT**



**we will not give up when faced with difficulties**

we are

**THOUGHTFUL**



**we treat everyone with respect and consideration**



# HOW WE DIFFER TO SCHOOL

## Students

**You're only around students your own age**, rather than being around Year 7 and upwards.

## Free periods

Although free periods are for independent study, **you can leave the College campus in your free periods.**

## Endless possibilities

You can **choose any combination of subjects** without being limited by option blocks.

## Wear your own clothes

**You can wear your own choice of clothes** - there is no uniform or the need to wear a suit.

## Everyone is new

Unlike a school sixth form, **everyone is new when they start**, so you are not trying to fit into established friendship groups.

## Clubs & societies

Our programme of extracurricular activities extends to **more than 40 clubs and societies.**

## Course options

We have **37 different course options** and a full range of **super curricular programmes.**



# OUR TEACHERS



“

Teachers at BSFC don't just prepare us for exams, they actually care about our future - **they really want us to succeed.**

Sam  
Year 2 student

”





Our teachers are specialists in A Levels and BTECs.



They have expert knowledge of the course they teach you.



This is a place of mutual respect - first names for everyone.



They are friendly and welcoming, and will treat you with respect from day one.



They will support you to help you realise your full potential.



More face-to-face teaching than other sixth forms - equivalent to 13 extra weeks of teaching across sixth form.



# OUR

# RESULTS

“

The best decision she's ever made. Hand-on-heart. If she'd have stayed at her grammar school, **she wouldn't have been getting the grades she got today.**

Phoebe's Mum  
Results Day 2024

”





**Our students' results each and every year are further proof of the success of our approach to education, and we are extremely proud of what they achieve.**



Students make better progress with us than anywhere else, no matter their starting point.



2024 was a record breaking year for A Level high grades (A\* - B.)



Our 'grammar school' cohort have the unrivalled high grade rate of 82%.



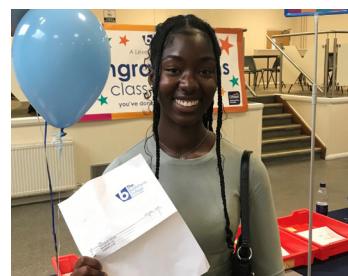
The results that you get with us open doors to the best universities in the country, and the right path for you as an individual.

**RUSSELL  
GROUP**

Russell Group universities are the most discerning universities in the country. Record numbers of our students progressed to Russell Group universities in 2024.



We can also help you gain apprenticeships with leading employers.





# PERSONAL

# GROWTH

## & ACADEMIC DEVELOPMENT





# TUTORS

**One of the things that sets us apart from school sixth forms is our team of experienced personal tutors.**

Each student is allocated a personal tutor who will stay with you throughout your time at College. Their purpose is to support the personal growth and academic development of each and every student.



**Tutors will help you settle in when you first start, monitor your progress and then support you with applications to university or other pathways.**



**You will have a weekly small group tutorial and a termly one-to-one review.**





# LEARNING SUPPORT

Based in the Learning Assistance Base, or LAB as we call it for short, the team of Learning Support Assistants is here for anyone with additional learning needs.

We offer in-class and out of class support for a diverse range of needs, and you'll find a member of the team in the LAB whenever you need them.





# CAREERS SUPPORT

**Our team of tutors are all experts in careers support and advice.**

We were the first College in the country to earn the Quality in Careers Assurance award, acknowledging our expertise in careers support.



After finishing College, our students go on to countless different universities, apprenticeships and employment paths, all supported by their assigned tutor.



Your tutor will be your guide through your career options and help you discover your ideal pathway.



We have specialist higher education programmes, such as Pathways to Medicine, to help you onto your chosen career path.





# CAREERS PROGRAMME

**Our award-winning careers programme runs all year round for all students, bringing you all the best opportunities and guidance for your next steps after College.**

The programme includes:

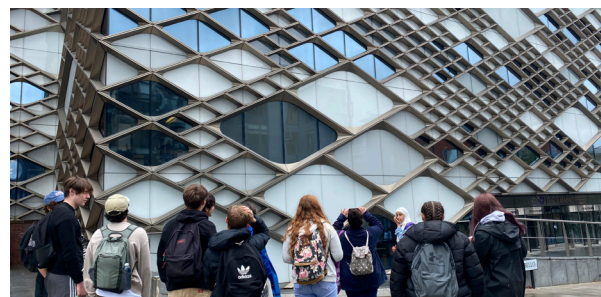
## FUTURES DAY

In July, more than 60 universities, apprenticeship providers, employers and organisations come to the College to give a wide range of talks for students to choose from. There is also a Higher Education fair.

The visiting street food vans for the festival lunch always go down a treat!

## UNIVERSITY VISITS

Each year, students visit leading universities to experience different campuses, learning environments, and social aspects, helping them make informed post-college choices.





# EXTRA

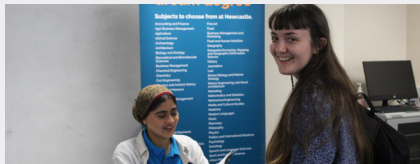
# CURRICULAR

**The College experience is more than just gaining you fantastic academic results: it will shape you as a person for the rest of your life.**

With links to universities, employers and other organisations, our enrichment offer is second-to-none.

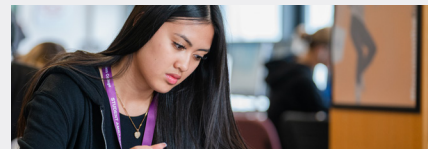
## University programmes

Programmes giving access to top universities like Oxbridge & Medicine courses.



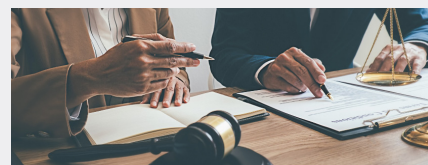
## EPQ

This qualification offers students a chance to develop independent research and project management skills which prepare students for university and careers.



## Partnerships to Open Doors

Strong university links allow pathways to professions such as Law & Engineering.





# EXTRA

# CURRICULAR

continued

## National competitions

Our students compete at the highest level against schools across the nation in a range of skillsets and interests.



## Visiting speakers

You'll have fascinating assemblies delivered by a range of visiting expert speakers about topics that matter to you.



## Duke of Edinburgh's Award

Gold or silver awards are both offered at the College, and when earned, can enhance anyone's prospects when it comes to university or employment.



## Trips and visits

Enhance your learning experience with subject-specific trips to expand horizons.





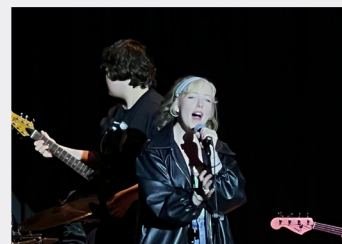
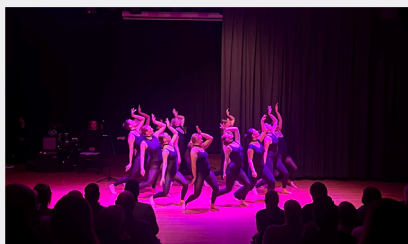
## Clubs, sports & activities

**Do More, Be More** is the College's enrichment programme, and encourages students to broaden their horizons with over 40 clubs to choose from. The Find Your Feet programme for the first four weeks of term helps students settle in and Inflatable Friday is a highlight!



## College production

Acting, singing, dancing and playing music in the annual College production are open to all students to take part in.



## Fundraising

We're always raising money for charities, and have innovative and exciting events all year round. Staff vs students always gets interesting...





# OUR

# 37

# COURSES

“

There's such a wide range of courses here, so it's easy to **find something that matches your interests and goals.**

Georgie  
Year 2 student

”





From the moment you apply, right through to when you join us, we'll work with you to ensure we guide you onto the best courses for your career aspirations.

**We offer A Levels and BTECs.**

## A LEVELs:

Short for Advanced Level. We offer 29 A Level options: some will be subjects you've studied at GCSE and some will be new. A Levels are highly valued by universities and employers so they can open doors to further study and careers.

## BTECs:

An alternative to A Levels, BTECs are more vocational and can be useful if you know what career you're working towards. Unlike A Levels, BTECs are continually assessed throughout the course with a combination of coursework, practical projects and exams.





# COURSE SUMMARY

Course	A Level	BTEC Extended Certificate equivalent to 1 A Level	Additional entry requirements are a minimum of the following GCSE Grades:
Art (Fine Art)	✓		Grade 4 in Art and Design or related Design Technology subject
Biology	✓		Grade 5 in Maths higher paper and either Grade 6 in Biology and two Grade 5s in Chemistry and Physics or two Grade 6s in Combined Science
Business	✓	✓	Business A Level requires a Grade 5 in Maths. A Level and BTEC qualifications are available in this subject. The type of qualification studied will be finalised at enrolment taking into account overall GCSE performance
Chemistry	✓		Grade 6 in Maths and either Grade 6 in Chemistry and two Grade 5s in Biology and Physics or two Grade 6s in Combined Science
Computer Science	✓		Grade 6 in Maths
Dance	✓		Applicants will be required to attend a technical class
Drama & Theatre Studies	✓		
Economics	✓		Grade 6 in Maths
English Language	✓		
English Literature	✓		Two Grade 5s in English Literature and English Language
Environmental Science	✓		Grade 5 in Maths Grade 5 in Biology or at least one Grade 5 in Combined Science
Film	✓		
French	✓		Grade 6 in French
Geography	✓		Grade 5 in Maths and Grade 5 in Geography
Graphics	✓		Grade 4 in Art and Design or related Design Technology subject
Health & Social Care		✓	
History	✓		
IT		✓	



### Choosing your courses:

You can study A Levels or BTECs or a combination of both. You will study three subject options, which can include a combination of A Levels and BTECs.

### Entry Requirements:

**Five GCSEs including Maths and English Language: a minimum of three GCSEs at grade 4 and two GCSEs at Grade 5**, plus additional entry requirements for individual subjects.

Please note: Level 2 BTECs are not accepted as part of any entry criteria.

Course	A Level	BTEC Extended Certificate equivalent to 1 A Level	Additional entry requirements are a minimum of the following GCSE Grades:
Law	✓	✓	Law A Level requires a Grade 5 in English Language. A Level and BTEC qualifications are available in this subject. The type of qualification studied will be finalised at enrolment taking into account overall GCSE performance
Maths	✓		Grade 6 in Maths and at least one other Grade 6 and one Grade 5
Further Maths	✓		Grade 7 in Maths and take Maths A Level alongside Further Maths
Media Studies	✓		
Music: Digital Production		✓	
Performing Arts		✓	Applicants will be required to attend a technical class
Physical Education	✓		Grade 4s in Sciences or PE Theory Paper
Physics	✓		Grade 6 in Maths and either Grade 6 in Physics and two Grade 5s in Biology and Chemistry or two Grade 6s in Combined Science
Politics	✓		
Psychology	✓		
Religious Studies	✓		
Science (Applied Science)		✓	Grade 4 in a science subject
Sociology	✓		
Spanish	✓		Grade 6 in Spanish
Sport		✓	
Statistics	✓		Grade 5 in Maths (higher paper)
Textiles	✓		Grade 4 in Art and Design or related Design Technology subject



# FINE ART

## What is it?

Exploring creative, artistic ideas and experiments using traditional and non-traditional media. Ideal for the open-minded and inquisitive student.

## What will I study?

Creating a portfolio; a personal investigation and set assignments using a broad range of techniques including drawing, painting, photography and mixed media.

## Why choose Fine Art at BSFC?

Choosing to study Fine Art A Level provides students with the opportunity to develop creativity, critical thinking, and technical skills in various art mediums. It also allows for personal expression and exploration of artistic concepts and techniques. Some of our former students have gone on to further study at prestigious universities such as Central Saint Martins.

## How will Fine Art prepare me for the world of work?

Creative, analytical and evaluation skills are transferrable across a host of jobs and careers.

## A Level Fine Art

### Entry Requirements

Five GCSEs including Maths and English Language: a minimum of three GCSEs at grade 4 and two GCSEs at Grade 5.

### Additional Entry Requirements

Grade 4 in Art.

### Exam Board: AQA

### How will I be assessed?

60% coursework; 40% fixed time exam.





# BIOLOGY

## What is it?

The study of life: using analytical thinking, research and practical skills to enhance your passion for understanding such things as genetic engineering, preventing disease, genes and species survival.

## What will I study?

A Level Biology covers topics such as cell structure, biological molecules, genetics, ecosystems, evolution, and disease. It also includes practical skills and experimental techniques relevant to the study of Biology.

## Why choose Biology at BSFC?

Our specialist teachers understand that the jump to A Level Biology from GCSE is considerable, but are best-placed to support you in stepping up to the challenge and understanding the living world that surrounds us.

## How will Biology prepare me for the world of work?

Scientific method, problem-solving, data analysis and practical skills are key skills in many areas. Biology is crucial for entry into many careers, such as medicine, veterinary science and dentistry.

## A Level Biology

### Entry Requirements

Five GCSEs including Maths and English Language: a minimum of three GCSEs at grade 4 and two GCSEs at Grade 5.

### Additional Entry Requirements

Grade 5 in Higher Maths paper and either Grade 6 in Biology and two Grade 5s in Chemistry and Physics or two Grade 6s in Combined Science

### Exam Board: OCR

### How will I be assessed?

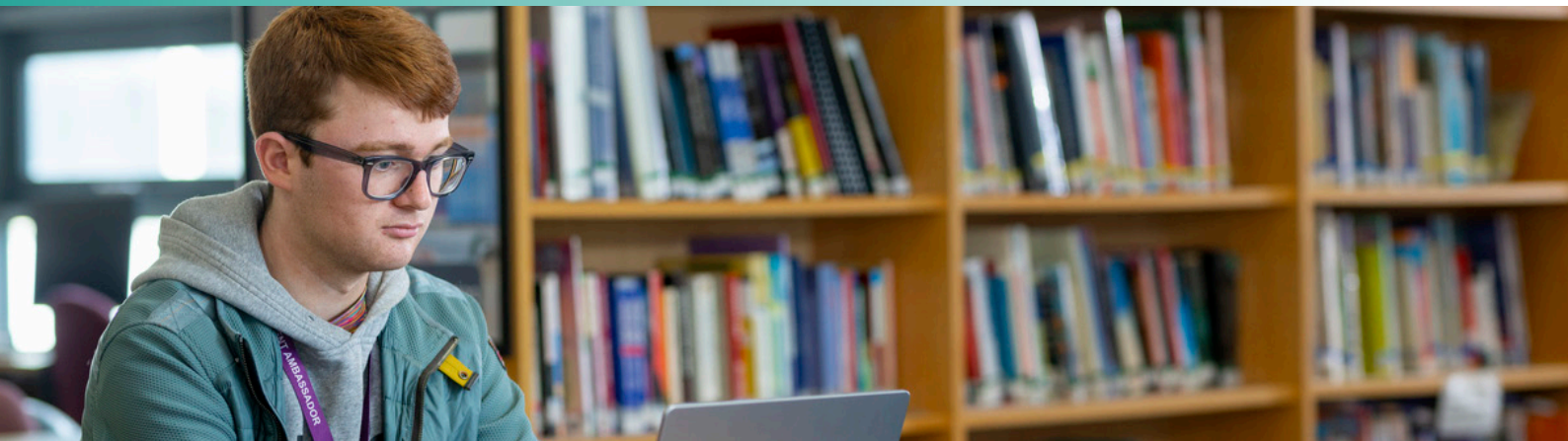
Exams at the end of Year 2 & a practical endorsement. 10% of exam marks available are based on mathematical assessment in the context of Biology.





# BUSINESS

# A LEVEL



## What is it?

Learning the skills to both understand and be successful in the business world, researching the fundamental principles and analysing corporate performance through the main business functions.

## What will I study?

Marketing & people; Managing business activities; Business decisions & strategy; Global business. A Level Business focuses more on international than national business concepts.

## Why choose Business at BSFC?

Business A Level is taught by expert teachers, who bring an array of workplace experience to the classroom. The course provides students with a comprehensive understanding of key business concepts, prepares students for higher education or employment in the business sector, and fosters valuable analytical and decision-making skills.

## How will Business prepare me for the world of work?

Ideal grounding for managing or creating your own business with the knowledge and research of what makes businesses successful and the means and methods of making it so.

## A Level Business

### Entry Requirements

Five GCSEs including Maths and English Language: a minimum of three GCSEs at grade 4 and two GCSEs at Grade 5.

**Additional Entry Requirements:** Grade 5 in Maths

**Exam Board:** Edexcel

### How will I be assessed?

Exams at the end of Year 2.



# BUSINESS

# BTEC

## What is it?

Learning the skills to both understand and be successful in the business world, researching and putting into practice some of the main business functions and marketing plans.

## What will I study?

Exploring business; Developing a marketing campaign; Personal & business finance; Recruitment & selection process. BTEC Business focuses more on national business than international.

## Why choose BTEC Business at BSFC?

Business BTEC is taught by expert teachers, who bring an array of workplace experience to the classroom. The course provides students with a practical and vocational approach to learning, preparing students for degree level study or for a wide range of careers in the business world.

## How will BTEC Business prepare me for the world of work?

Ideal grounding for managing or creating your own business with the knowledge and research of what makes businesses successful and the means and methods of making it so.

## BTEC Business Extended Certificate

### Entry Requirements

Five GCSEs including Maths and English Language: a minimum of three GCSEs at grade 4 and two GCSEs at Grade 5.

**Exam Board:** Pearson Edexcel

### How will I be assessed?

Coursework; controlled assessments; externally set exam.





# CHEMISTRY

## What is it?

The knowledge that underpins our understanding of medicine, dentistry, veterinary science and Pharmaceuticals. Ideal to study alongside other sciences for the broadest possible knowledge base.

## What will I study?

Six modules including: Development of practical skills in Chemistry; Periodic table & energy; Core organic chemistry; Physical chemistry & transition elements; Organic chemistry & analysis.

## Why choose Chemistry at BSFC?

Each year, our top chemists take part in the Royal Society's Young Analyst competition, pitting their skills against other schools in the region in the University of Liverpool's brand new labs.

## How will Chemistry prepare me for the world of work?

A deep understanding of what the world around us is made of and practical skills that are invaluable transferrable skills. Chemistry is vital for entry to a wide range of careers.

## A Level Chemistry

### Entry Requirements

Five GCSEs including Maths and English Language: a minimum of three GCSEs at grade 4 and two GCSEs at Grade 5.

### Additional Entry Requirements

Grade 6 in Maths and either Grade 6 in Chemistry and two Grade 5s in Biology and Physics or two Grade 6s in Combined Science

### Exam Board: OCR

### How will I be assessed?

Exams at the end of Year 2 & a practical endorsement. 20% of exam marks available are based on mathematical assessment in the context of Chemistry.





# COMPUTER SCIENCE

## What is it?

Computer Science focuses on computer hardware and how computer languages, networks and processors work with a great mixture of theoretical and practical work. Good mathematical skill is important.

## What will I study?

Learn a programming language; binary; data structures; algorithms and computer science theory along with practical computer programming.

## Why choose Computer Science at BSFC?

Having invested nearly a quarter of a million pounds in extra student-facing IT resources this year alone, Computer Science students at the College can be sure that they are in the right place to be studying a computing qualification.

## How will Computer Science prepare me for the world of work?

The knowledge and skills developed from studying this subject are highly sought after in ever-growing areas of IT development, such as coding and robotics.



## A Level Computer Science

### Entry Requirements

Five GCSEs including Maths and English Language: a minimum of three GCSEs at grade 4 and two GCSEs at Grade 5.

### Additional Entry Requirements

Grade 6 in Maths.

**Exam Board:** OCR

### How will I be assessed?

80% written exam at the end of Year 2;  
20% practical coursework project.



# DANCE

There is an extracurricular component for Dance A Level that Dance students are expected to be involved with. Go to the Dance course page on the College website via the QR code or the address below for full details.

[www.bsfc.ac.uk/courses/performing-arts/dance-a-level](http://www.bsfc.ac.uk/courses/performing-arts/dance-a-level)



## What is it?

Not just performing dance but also choreographing, working in groups and engaging in critical thinking about the actual art form of dance itself.

## What will I study?

Working on dance techniques; choreographing and participating in performances both solo and in groups; researching and understanding dance theory, history and cultural context.

## Why choose Dance at BSFC?

The College has a strong performing arts culture, and each year, an ambitious and exciting production is put together by the College's dancers, actors and musicians for a performance to the public.

## How will Dance prepare me for the world of work?

Aside from pursuing professional dance, the A Level develops crucial skills like communication, analysis, evaluation, creativity, confidence and dedication.

## A Level Dance

### Entry Requirements

Five GCSEs including Maths and English Language: a minimum of three GCSEs at grade 4 and two GCSEs at Grade 5.

Applicants will be required to attend a technical class.

**Exam Board:** AQA

### How will I be assessed?

50% written exam; 50% performance & choreography; both at the end of Year 2.



# DRAMA

## What is it?

A combination of practical and theoretical work, examining communicating with audiences, style, dramatic structure, characterisation along with historical, social and cultural contexts of works.

## What will I study?

Studying a range of important plays through the centuries, both modern and classic, for the written exam, alongside various 21st century plays for performance. You'll work on the theatrical processes and practices involved in interpreting and performing theatre.

## Why choose Drama & Theatre Studies at BSFC?

The College has a strong performing arts culture, and each year, an ambitious and exciting production is put together by the College's actors, directors, dancers and musicians for a performance to the public.

## How will Drama & Theatre Studies prepare me for the world of work?

Crucial personal skills are enhanced on this course, from self-confidence to working with others, and practical skills to analytical thinking.

## A Level Drama & Theatre Studies

### Entry Requirements

Five GCSEs including Maths and English Language: a minimum of three GCSEs at grade 4 and two GCSEs at Grade 5.

**Exam Board:** AQA

### How will I be assessed?

Coursework; controlled assessments; externally set exam.





# ECONOMICS

## What is it?

It is about choices and the impact of our choices on each other, relating to every aspect of our lives from individuals and families to structures created by governments and firms.

## What will I study?

How markets work; what happens when they do not work; demand & supply; inflation & underemployment, the role of governments & unions; macroeconomics.

## Why choose Economics at BSFC?

The College has the leading Economics department in the North West with unparalleled quality of teaching in the subject.

## How will Economics prepare me for the world of work?

This subject is extremely useful as everyone has to deal with both making economic decisions and dealing with their consequences in their personal and working lives.

## A Level Economics

### Entry Requirements

Five GCSEs including Maths and English Language: a minimum of three GCSEs at grade 4 and two GCSEs at Grade 5.

### Additional Entry Requirements

Grade 6 in Maths.

### Exam Board: OCR

### How will I be assessed?

Exams at the end of Year 2.





# ENGLISH

# LANGUAGE

## What is it?

Language is the greatest achievement of humankind - it is the way we think, feel and understand ourselves. This A Level examines all aspects of the creation and use of the English language.

## What will I study?

Spoken language genres & contexts; language change over time; creative & critical use of language; language & identity, including gender, diversity and self-representation.

## Why choose English Language at BSFC?

Unlike the lessons you may have had in high school, English lessons at the College are more in the form of university seminars, encouraging students to get involved in discussion and debate about topics covered.

## How will English Language prepare me for the world of work?

The analytical and communication skills that this course provides is useful in almost any occupation, as well as understanding and using how and why we communicate in certain ways to use this information to your advantage.



## A Level English Language

### Entry Requirements

Five GCSEs including Maths and English Language: a minimum of three GCSEs at grade 4 and two GCSEs at Grade 5.

**Exam Board:** Eduqas

### How will I be assessed?

80% exams at the end of Year 2; 20% coursework.



# ENGLISH LITERATURE



## What is it?

Literature is language at its most expressive and insightful. This is your chance to learn to enjoy books and reading as more than a pastime and learn hidden meanings and feelings within writing.

## What will I study?

Detailed study of poetry & drama from a multitude of time periods to understand contexts and themes, as well as prose fiction texts, and then applying the skills developed with unseen texts.

## Why choose English Literature at BSFC?

Unlike the lessons you may have had in high school, English lessons at the College are more in the form of university seminars, encouraging students to get involved in discussion and debate about topics covered.

## How will English Literature prepare me for the world of work?

Developing the ability to read, reflect and critique, and stating your conclusions clearly is essential to many forms of work, as is constructing and defending an argument or position.

## A Level English Literature

### Entry Requirements

Five GCSEs including Maths and English Language: a minimum of three GCSEs at grade 4 and two GCSEs at Grade 5.

### Additional Entry Requirements

Two Grade 5s in English Literature and English Language.

**Exam Board:** Eduqas

### How will I be assessed?

80% exams at the end of Year 2; 20% coursework.



# ENVIRONMENTAL SCIENCE

## What is it?

Develop your understanding of contemporary environmental issues and investigate the impact of human activity on our planet. You should be keen to explore how we can create strategies for a sustainable lifestyle. This is a subject that helps you to develop professional research skills that will assist you in a range of future career pathways.

## What will I study?

Seven modules including: The living environment; the physical environment, research methods; energy resources; pollution, biological resources and sustainability

## Why choose Environmental Science at BSFC?

This is an exciting course that can help change the world for the better. Enjoy exploring the contemporary environmental issues that face the world today, such as the sustainable use of resources. You should have an interest in learning about conservation methods and the creation of new technology to help improve the planet.

## How will Environmental Science prepare me for the world of work?

Environmental scientists work in a number of different areas ranging from agriculture to healthcare, conservation, environmental planning, microbiology, water management and environmental law.

## A Level Environmental Science

### Entry Requirements

Five GCSEs including Maths and English Language: a minimum of three GCSEs at grade 4 and two GCSEs at Grade 5.

**Exam Board:** AQA

### Additional Entry Requirements

A Grade 5 in Maths & Grade 5 in Biology or at least one Grade 5 in Combined Science

### How will I be assessed?

100% exams at the end of Year 2.





# FILM STUDIES

## What is it?

Film is perhaps one of the most important cultural innovations of the past 100 years. A Level Film Studies is designed to introduce students to a wide variety of films, exploring how films are created and how they reflect the time and place they are made.

## What will I study?

You will study 11 very different films focusing upon film form, context, representation, spectatorship and ideology. You will also have the opportunity to create your own short film or screenplay.

## Why choose Film Studies at BSFC?

Film Studies students enjoy trips to London and Higher Education institutions, such as Salford University, as well as visits from industry professionals to further their understanding and knowledge of the subject.

## How will Film Studies prepare me for the world of work?

The emphasis on analytical skills, critical thinking and independent study on this course will prove invaluable for a wide range of careers and Higher Education courses.

## A Level Film Studies

### Entry Requirements

Five GCSEs including Maths and English Language: a minimum of three GCSEs at grade 4 and two GCSEs at Grade 5.

**Exam Board:** Eduqas

### How will I be assessed?

70 % exam at the end of Year 2; 30% coursework completed in Year 1.





# GEOGRAPHY

## What is it?

An opportunity to immerse yourself in current global issues that are shaping our world today. Studying the issues of climate change, mass migration, the rise of extremism and the impact of human activity on the natural world make this subject one of the most exciting, adventurous and valuable subjects to study.

## What will I study?

You'll enhance your GCSE Geography skill-set through studying the Water and Carbon Cycle, Changing Places, Coastal Systems and Landscapes, Hazards, Population and the Environment and Global Systems and Global Governance.

## Why choose Geography at BSFC?

Geography A Level at BSFC is taught in an interactive and supportive way. Students will attend field trips and will have access to specialist Geography Undergraduate mentors from the University of Liverpool. Many students go on to study Geography at university.

## How will Geography prepare me for the world of work?

The nature of Geography A Level coursework at BSFC enables our students to develop an independent and evaluative outlook on our ever-changing world. Employers actively seek out Geographers due the analytical skills they have developed in careers ranging from GIS analysts, environmental managers, chartered surveyors to geophysicists and even air pilots!

## A Level Geography

### Entry Requirements

Five GCSEs including Maths and English Language: a minimum of three GCSEs at grade 4 and two GCSEs at Grade 5.

### Additional Entry Requirements

Grade 5 in Maths and Grade 5 in Geography.

**Exam Board:** AQA

### How will I be assessed?

80% written exam at the end of Year 2; 20% practical geographical investigation in Year 1.



Geography students on a field trip



# GRAPHICS



## What is it?

Learning how to combine imaginative, innovative graphic design ideas in response to briefs with industry standard Adobe software. This gives students the skills for high employability.

## What will I study?

Developing a portfolio using traditional graphic design techniques and industry software, along with negotiating an externally set brief project with help from your teachers.

## Why choose Graphics at BSFC?

Studying Graphics A Level enables students to show their creativity, build a strong portfolio, develop industry-relevant skills, and offers practical project experience, preparing you for diverse career opportunities in the design field. Some of our former students have gone on to further study at prestigious universities such as Central Saint Martins.

## How will Graphics prepare me for the world of work?

Creatively working to briefs using media industry standard software which provides students with the skills necessary for a broad range of design careers.

## A Level Graphics

### Entry Requirements

Five GCSEs including Maths and English Language: a minimum of three GCSEs at grade 4 and two GCSEs at Grade 5.

### Additional Entry Requirements

Grade 4 in Art.

**Exam Board:** AQA

### How will I be assessed?

60% coursework; 40% exam projects.



# HEALTH & SOCIAL CARE

## What is it?

The perfect way to start on a journey into a career in Health & Social Care. Examine different areas of care so you can understand which career path and field of work suits you best.

## What will I study?

Amongst the modules studied on the courses are: Human life span development; Meeting individual care & support needs, Working in Health & Social Care; Psychological perspectives.

## Why choose Health & Social Care at BSFC?

The Health & Social Care department has a team of teachers who come from a full spectrum of specialisms within the Health and Social Care sector and have years of experience both working and teaching in the area. They will help students develop their skills and knowledge, and turn what can start as just an interest in a career in helping others into a vocation.

## How will Health & Social Care prepare me for the world of work?

This course prepares students for a wide range of careers within the care field such as nursing, physiotherapy, occupational therapy, social work and working with children in a variety of settings.

## BTEC Health & Social Care Extended Certificate

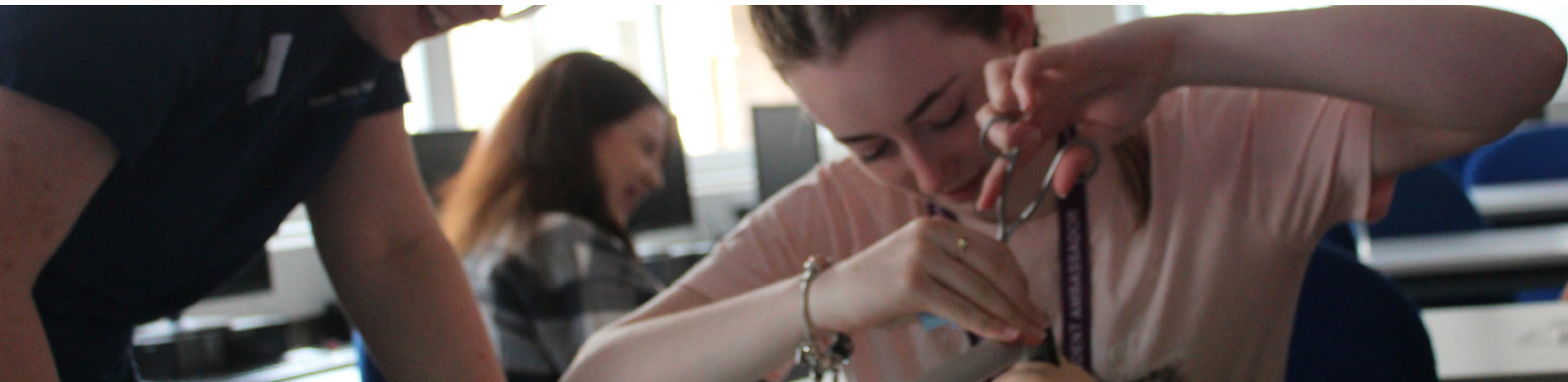
### Entry Requirements

Five GCSEs including Maths and English Language: a minimum of three GCSEs at grade 4 and two GCSEs at Grade 5.

**Exam Board:** Pearson Edexcel

### How will I be assessed?

Coursework; controlled assessments; externally set exam.





# HISTORY

## What is it?

History allows you to look beyond the headlines and to ask key questions. You will learn to evaluate source material and hone this invaluable skill across a wide variety of topics and time periods.

## What will I study?

The course includes studying Russia & the USSR under Lenin through to Yeltsin (1917-91), Mao's China (1949-75), and protest, agitation and parliamentary reform in Britain (1780-1928).

## Why choose History at BSFC?

To say that the teachers in the College's History department are passionate about their subject is to do them a huge disservice. They live and breathe what they teach and their passion and drive is shown in their students' outcomes every single year.

## How will History prepare me for the world of work?

History provides a background to our cultural tradition and a better appreciation of our present, along with nurturing your abilities to analyse and argue points of debate using reliable sources and facts.

## A Level History

### Entry Requirements

Five GCSEs including Maths and English Language: a minimum of three GCSEs at grade 4 and two GCSEs at Grade 5.

**Exam Board:** Edexcel

### How will I be assessed?

80% exams at the end of Year 2; 20% coursework.





# I.T.

## What is it?

Our IT course mainly focuses on the software elements of computing, as opposed to hardware. You will study a combination of theoretical and practical work, with programming and the creation of various platforms being key elements.

## What will I study?

There is a wide range of topics covered on the extended certificate course, including creating systems and databases to managing information, website development and using social media in business.

## Why choose IT at BSFC?

You will have the opportunity to take part in trips, competitions and experiences that will enhance your learning journey.

## How will IT prepare me for the world of work?

This qualification is an ideal platform to go onto an apprenticeship in the industry or further study, and the skills gathered offer high-employability. IT & computing is an ever-growing field requiring qualified experts.



## BTEC IT Extended Certificate

### Entry Requirements

Five GCSEs including Maths and English Language: a minimum of three GCSEs at grade 4 and two GCSEs at Grade 5.

**Exam Board:** Pearson Edexcel

### How will I be assessed?

A mixture of coursework and internally and externally set controlled assessments plus exams across the two years.



# LANGUAGES



## What is it?

As well as improving and developing your language skills, studying a language A Level allows you to open your mind to other cultures and gain a competitive edge in employment or study prospects.

## What will I study?

Developing your spoken ability in the language & defending a point of view; listening; reading & translating, and critical & analytical response in writing are all covered in our modern foreign language courses.

## Why choose Languages at BSFC?

You may well be able to take part in trips to either France or Spain (depending on your choice of language) to immerse yourself in the culture and enhance your language skills.

## How will a language prepare me for the world of work?

Speaking a foreign language is a highly-valued skill for employees across the world, and indeed Britain where a huge amount of business is done with non-English speaking countries.

## A Level French/Spanish

### Entry Requirements

Five GCSEs including Maths and English Language: a minimum of three GCSEs at grade 4 and two GCSEs at Grade 5.

**Exam Board:**  
Eduqas

### Additional Entry Requirements

Grade 6 in French or Spanish.

### How will I be assessed?

Oral, listening & written exams at the end of Year 2.



# LAW

# A LEVEL

## What is it?

Through the subject, you will develop an understanding of Law as a changing body of rules that affect you in all aspects of your life. Law is the perfect balance of scientific reasoning and application of qualified yet creative thought.

## What will I study?

During the two year course there will be the opportunity to find out about how the English Legal System works. Students will learn about civil and criminal liability as they explore criminal law, tort law and contract law in depth.

## Why choose Law at BSFC?

Law students have the opportunity to join the College Bar Mock Trial team each year, acting as barristers and witnesses in front of real judges in both Liverpool and Chester Crown Courts.

## How will Law prepare me for the world of work?

A large number of our students go onto degrees, apprenticeships and other qualifications in the field of Law. Law also offers many transferrable skills such as reasoning, problem-solving and analysis.

## A Level Law

### Entry Requirements

Five GCSEs including Maths and English Language: a minimum of three GCSEs at grade 4 and two GCSEs at Grade 5.

**Additional Entry Requirements:** Grade 5 in English Language

**Exam Board:** OCR

### How will I be assessed?

Exams at the end of Year 2.

*Law students taking part in Bar Mock.*





# LAW

# BTEC

## What is it?

BTEC Law will give you an understanding of the basic principles of how laws are made and interpreted by Judges and then how this may affect you as a member of the public in your everyday life. This is done through in depth, detailed discussions of the law, providing advice to clients and through critical analysis of the strengths and weaknesses of each area covered.

## What will I study?

In your first year, you will study; The Legal System, Basic Criminal Law, the Civil Court System, Alternative Dispute Resolution and the Tort of Negligence. In your second year, you will study; Family Law, Further Criminal Offences, Police Powers and Defences.

## Why choose BTEC Law at BSFC?

BTEC Law is taught by experienced teachers, some of whom have worked in legal practice. All students will have the opportunity to participate in extra-curricular activities such as; the Bar Mock Trial, Pathways to Law Programme, trips to local Courts.

## How will BTEC Law prepare me for the world of work?

The course focuses on understanding the law and advising clients on outcomes, exactly what you would be doing in practice! Those transferable skills which you develop, such as problem-solving etc. enabled many of our past students to go on to university and achieve highly in their field.

## BTEC Law Extended Certificate

### Entry Requirements

Five GCSEs including Maths and English Language: a minimum of three GCSEs at grade 4 and two GCSEs at Grade 5.

**Exam Board:** Pearson Edexcel

### How will I be assessed?

Year 1: 50% coursework, 50% External Exam

Year 2: 40% coursework, 60% External Exam





# MATHS

## What is it?

A Level Maths provides the bedrock for getting to the heart of numbers, shapes, movement, data and relationships. It is an ideal subject for those with a curious and logical mind.

## What will I study?

The course covers topics such as advanced algebra, calculus, trigonometry, coordinate geometry, probability, averages, displaying data, sampling, binomial distribution, correlation and vectors.

## Why choose Maths at BSFC?

Learning Maths at the College is a process that will happen both inside the classroom and independently, and is offered through a variety of lectures, discussion, internet research, competitions and both video and audio material.

## How will Maths prepare me for the world of work?

The list of careers that an A Level in Maths can open up is endless. While it is an essential basis for such things as engineering, architecture and financial routes, more surprising careers could come in the form of weather forecasting or computer game programming.



## A Level Maths

### Entry Requirements

Five GCSEs including Maths and English Language: a minimum of three GCSEs at grade 4 and two GCSEs at Grade 5.

### Additional Entry Requirements

Grade 6 in Maths and at least one other Grade 6 and one Grade 5.

**Exam Board:** AQA

### How will I be assessed?

Exams at the end of Year 2.



# FURTHER MATHS



## What is it?

Further Maths is a challenging course designed to extend Mathematicians. It broadens and deepens the Mathematics covered at A Level as well as introducing new topics.

## What will I study?

The course covers topics such as advanced algebraic functions, complex numbers, matrices, Maclaurin series, volumes of revolution, vectors, Hamiltonian cycles, Eulerian trails and Euler's formula.

## Why choose Further Maths at BSFC?

You will have the opportunity to take part in national competitions such as the UKMT Challenge and the code-breaking National Cipher Challenge as well as attending lectures independently by visiting speakers at local universities.

## How will Further Maths prepare me for the world of work?

Further Maths A Level is an elite qualification, held by very few. If you are planning on a career in which Maths is an essential ingredient, then possessing a Further Maths qualification could certainly give you a huge advantage in terms of employability.

## A Level Further Maths

### Entry Requirements

Five GCSEs including Maths and English Language: a minimum of three GCSEs at grade 4 and two GCSEs at Grade 5.

### Additional Entry Requirements

Grade 7 in Maths and Maths A Level must be taken alongside Further Maths.

**Exam Board:** AQA

### How will I be assessed?

Exams at the end of Year 2.



# MEDIA

# STUDIES

## What is it?

The course looks at the media's role in people's lives, researching and evaluating topics, methods and reasons for productions before using this knowledge to work on your own creations.

## What will I study?

Components include investigating the media, investigating media forms & products, and media production across the two years, with both theoretical and practical work playing a part in the course.

## Why choose Media Studies at BSFC?

Media students enjoy trips to major TV studios such as the BBC and ITV in both London and in Media City, Salford, to gain insight and understanding of what happens behind the scenes in some of our most popular and long-standing broadcasts.

## How will Media Studies prepare me for the world of work?

Most, if not all, industries rely upon some sort of media to support their business interests, from social media to websites, publications and newsletters to logos. This course gives you a great grounding in media and will open you up to become an independent researcher and thinker.

## A Level Media Studies

### Entry Requirements

Five GCSEs including Maths and English Language: a minimum of three GCSEs at grade 4 and two GCSEs at Grade 5.

**Exam Board:** Eduqas

### How will I be assessed?

70% exams at the end of Year 2; 30% coursework.





# MUSIC

# DIGITAL PRODUCTION

## What is it?

Explore your passion for music with learning digital techniques and tricks of the trade. The course is ideal for someone who would like to study how music is created in the digital age and use this knowledge to create their own work.

## What will I study?

Units on the course include: Music & sound for media; DAW production; Creative & synthesis & sampling; Remixing & reworking / Mixing & mastering techniques.

## Why choose Music at BSFC?

The College has a fantastic, custom-designed Wolfson Sound Studio, with mixing studio and adjacent live room with all the equipment you need to work on honing your production skills.

## How will Music prepare me for the world of work?

The qualification can prepare you for both further study in music production or for direct employment in entry roles in the industry such as studio assistants, junior sound designers and remixers.

## BTEC Music: Digital Production Extended Certificate

### Entry Requirements

Five GCSEs including Maths and English Language: a minimum of three GCSEs at grade 4 and two GCSEs at Grade 5.

**Exam Board:** Pearson Edexcel

### How will I be assessed?

33% externally set assessment; 67% on-going coursework, projects and practical work.





# P.E.

## What is it?

The subject delves into how our bodies push themselves to their physical peak and improve performance. The course is an in-depth analysis of the mechanics of both our bodies and of sport.

## What will I study?

You will look at factors affecting participation in physical activity & sport, practical performance, energy systems, injury prevention & rehabilitation, advanced biomechanical principles and more.

## Why choose PE at BSFC?

PE A Level at BSFC provides students with a deep understanding of the principles of sport and exercise science, enhances practical skills, and opens up opportunities for careers in sports science, coaching, and physical education. Many of our Sport & PE students like to get involved in the sports available at the College, and there are plenty of extracurricular sports opportunities, with netball, basketball, volleyball, table tennis, football and much more.

## How will PE prepare me for the world of work?

The growth in the health, fitness and leisure industries has led to a large increase in career options for those with sporting qualifications, such as coaching, sports development, sports science and physiotherapy.

## A Level P.E.

### Entry Requirements

Five GCSEs including Maths and English Language: a minimum of three GCSEs at grade 4 and two GCSEs at Grade 5.

### Additional Entry Requirements

Grade 4s in Sciences or PE Theory Paper.

PE students must be regularly participating in an AQA approved sport.

**Exam Board:** AQA

### How will I be assessed?

70% exams at the end of Year 2; 15% practical performance; 15% practical analysis.





# PERFORMING

# ARTS



## BTEC Performing Arts

### Extended Certificate

#### Entry Requirements

Five GCSEs including Maths and English Language: a minimum of three GCSEs at grade 4 and two GCSEs at Grade 5.

#### Additional Entry Requirements

Applicants will be required to attend a technical class.

**Exam Board:** Pearson Edexcel

#### How will I be assessed?

Internally and externally controlled assessments, both in performance and theory.

#### What is it?

This two year course provides an excellent stepping stone for those interested in both Drama and Dance wishing to pursue a career in Performing Arts. It can be studied alongside either A Level Drama and Theatre Studies, A Level Dance or BTEC Digital Music Production, or as a standalone subject option.

#### What will I study?

There are four modules on the course, with three core components of:

- Investigating practitioners' work in performing arts
- Developing skills and techniques in performance
- Group performance

All modules will see work across the two areas of Drama and Dance.

#### Why choose BTEC Performing Arts at BSFC?

The College has a strong performing arts culture and each year an ambitious and exciting production is put together by the College's dancers, actors and musicians for a performance to the public. You will also have many more performance opportunities throughout your two years at the College. You will have the opportunity to work with professional companies through workshops and go on trips to see live productions.

#### How will BTEC Performing Arts prepare me for the world of work?

As well as ensuring that your knowledge and technical skills prepare you for a profession in the Performing Arts industry, the course will help you develop crucial transferable skills like communication, analysis, evaluation, creativity, confidence and dedication within any career path.



# PHYSICS

## What is it?

Physics is a brilliantly varied subject which spans topics ranging from the huge cosmological scale right down to the tiny sub-atomic scale. By studying Physics you develop the ability to not only describe how everything around you works but to explain and predict it.

## What will I study?

In Year 1, you will revisit forces and motion, electricity, waves and materials while also starting to explore new ideas such as quantum physics.

In Year 2, study of topics including astrophysics, medical physics, nuclear and particle physics and many more.

## Why choose Physics at BSFC?

Not only is the Physics department superbly equipped with the entire range of practical needs catered for by dedicated science technicians, but the teachers solely teach Physics A Level, making them specialists in their subjects and the best people to help you reach your full potential.

## How will Physics prepare me for the world of work?

You will leave the course with a range of skills including the ability to handle numbers confidently, approach problems logically, and work practically. These skills will be an asset if you undertake further study or employment in not only the sciences but also many other fields including: engineering, finance, architecture, medicine, computer science and maths.

## A Level Physics

### Entry Requirements

Five GCSEs including Maths and English Language: a minimum of three GCSEs at grade 4 and two GCSEs at Grade 5.

### Additional Entry Requirements

Grade 6 in Maths and either Grade 6 in Physics and two Grade 5s in Biology and Chemistry or two Grade 6s in Combined Science.

### Exam Board: OCR

### How will I be assessed?

Exams at the end of Year 2 & a practical endorsement. 40% of exam marks available are based on mathematical assessment in the context of Physics.





# POLITICS

## What is it?

We live in an era where politics is at the fore across the UK and indeed across the globe. From Brexit to the Trump administration to each country's handling of COVID-19 - learn about the structures and systems that underpin how we operate as a nation.

## What will I study?

UK politics including core political ideas of conservatism, liberalism and socialism; UK government including the constitution, Parliament and the Prime Minister; Comparative politics with the USA.

## Why choose Politics at BSFC?

Trips include visits to the Houses of Parliament in London, meeting MPs and seeing how they operate, and also conferences and lectures locally and nationally. Debate Club is popular with Politics students at the College and they annually take part in national competitions.

## How will Politics prepare me for the world of work?

Studying Politics will develop critical analytical skills and writing abilities and as such is very well respected by universities and employers alike as a rigorous subject.

## A Level Politics

### Entry Requirements

Five GCSEs including Maths and English Language: a minimum of three GCSEs at grade 4 and two GCSEs at Grade 5.

**Exam Board:** Edexcel

### How will I be assessed?

Exams at the end of Year 2.



*Students at the European Youth Parliament*



# PSYCHOLOGY

## What is it?

Psychologists have an interest in human behaviour and the methods used to investigate it. Ideal for those who are naturally curious about such things as obeying authority, the cause of phobias and criminal behaviour. It is a strongly data-led subject.

## What will I study?

Topics studied include: Social influence; Memory; Psychopathology; Approaches in psychology; Biological Psychology; Cognition and Development; Schizophrenia; Forensic Psychology; Issues and debates.

## Why choose Psychology at BSFC?

The most popular choice of course for students at the College, you have the chance to get involved in various trips, conferences and special days, such as Phobia Day, where weird and wonderful wildlife help you learn about phobias in an engaging and hands-on way.

## How will Psychology prepare me for the world of work?

Skills developed on the courses include oral & written communication, computer literacy, numeracy, problem-solving and the ability to carry out independent research, and can underpin careers in educational psychology, therapy or occupational psychology, to name but a few.



Annual Phobia day

## A Level Psychology

### Entry Requirements

Five GCSEs including Maths and English Language: a minimum of three GCSEs at grade 4 and two GCSEs at Grade 5.

### Exam Board: AQA

### How will I be assessed?

Exams at the end of Year 2.



# RELIGIOUS STUDIES



## What is it?

Develop an understanding of how religion fits into the wider world and how philosophy fits into history. You can challenge your own personal beliefs in a safe and philosophical manner, and enjoy discussing matters with your teachers and classmates.

## What will I study?

Across the two years, you will focus on Buddhism as a major world religion and important elements of beliefs. You will look at ethical theories such as natural moral law and also the philosophy of religion.

## Why choose Religious Studies at BSFC?

RS lessons at the College encourage informed debate and philosophical discussion in class, which might well be very different to high school lessons as they take on a more university seminar-like feel where students are included in the process.

## How will Religious Studies prepare me for the world of work?

The ability to understand and interact with people and organisations from a variety of religious and cultural traditions is highly valued, as is the skill to argue a case on the basis of evidence, which is central to progress in many careers.

## A Level Religious Studies

### Entry Requirements

Five GCSEs including Maths and English Language: a minimum of three GCSEs at grade 4 and two GCSEs at Grade 5.

**Exam Board:** AQA

### How will I be assessed?

Exams at the end of Year 2.



# APPLIED SCIENCE

## What is it?

Further your knowledge of the key concepts in the three sciences of Biology, Chemistry & Physics, while developing your skills using laboratory equipment and exploring fundamentals that underpin scientific investigation.

## What will I study?

Topics covered in the courses include: Principles & applications of science; Practical scientific procedures; Scientific investigation skills; Human regulation & reproduction.

## Why choose Applied Science at BSFC?

There is a large element of practical work and practical assessment as part of Applied Science which makes our specialist laboratories at College the ideal place to study the qualification. Our laboratory technicians always have some fun experiments to get involved in across the year too.

## How will Applied Science prepare me for the world of work?

The large element of practical work will enhance your scientific skills, and having a basis in all three major science branches of Biology, Chemistry and Physics can provide a great route into science in higher education or industry.

## BTEC Applied Science Extended Certificate

### Entry Requirements

Five GCSEs including Maths and English Language: a minimum of three GCSEs at grade 4 and two GCSEs at Grade 5.

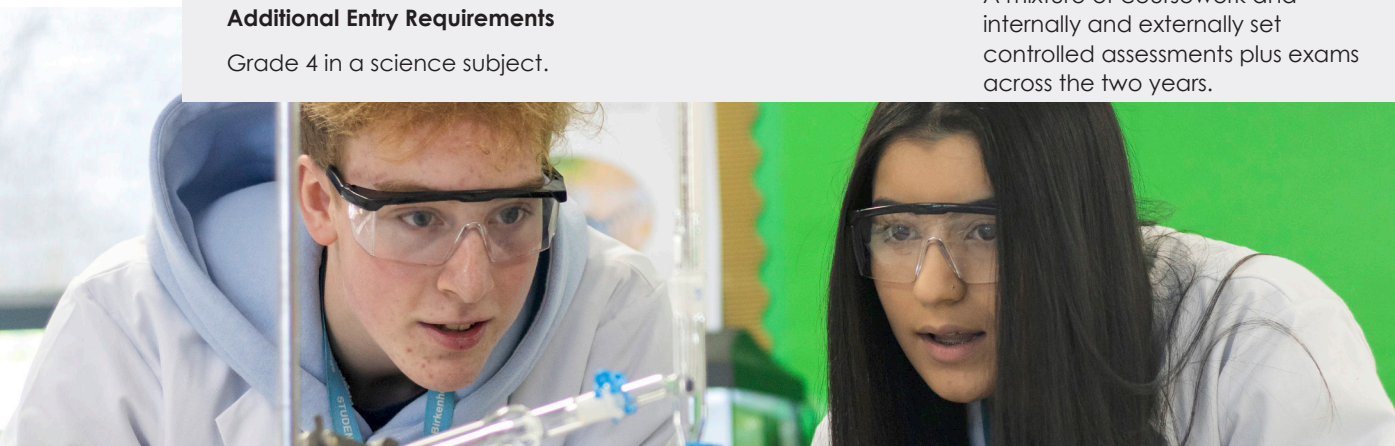
### Additional Entry Requirements

Grade 4 in a science subject.

**Exam Board:** Pearson Edexcel

### How will I be assessed?

A mixture of coursework and internally and externally set controlled assessments plus exams across the two years.





# SOCIOLOGY

## What is it?

Sociology explores your interest in understanding how the world around you works, exercises critical thinking and explores ideas from different viewpoints. Sociology students should be prepared to think about and discuss what can sometimes be sensitive and disturbing topics.

## What will I study?

You will look at families & households including the relationship of the family to social structure, education and sociological methods, beliefs in society & ideology, and crime & deviance.

## Why choose Sociology at BSFC?

Sociology is one of our most popular courses and not a course that is offered by all schools and colleges in the region. It works particularly well alongside some of our other subjects, such as Psychology which help you expand your understanding of the vibrant and relevant topics covered in Sociology.

## How will Sociology prepare me for the world of work?

You will gain a range of very valuable skills, including how to work independently and with others, and how to find information, extract what is important from it and turn it into an argument. You will learn to think critically, to question common-sense assumptions and to solve problems.

## A Level Sociology

### Entry Requirements

Five GCSEs including Maths and English Language: a minimum of three GCSEs at grade 4 and two GCSEs at Grade 5.

**Exam Board:** AQA

### How will I be assessed?

Exams at the end of Year 2.





# SPORT

## What is it?

This qualification involves a combination of practical and theoretical work, investigating different aspects of sport, from the industries involved to exploring the skeletal, muscular, cardiovascular and respiratory systems' functions and structures.

## What will I study?

Topics covered include: Anatomy & Physiology; Fitness training & programming for health, sport and wellbeing; Professional development in the sports industry; Application of fitness testing.

## Why choose Sport at BSFC?

Students who study BTEC Sport at BSFC are offered hands-on learning and expert guidance. You'll gain practical skills, theoretical knowledge, and real-world experience, preparing you for careers such as sports management, coaching, and fitness. Many of our Sport & PE students like to get involved in the sports available at the College, and there are plenty of extracurricular sports opportunities, with netball, basketball, volleyball, table tennis, football and much more.

## How will Sport prepare me for the world of work?

The growth in health, fitness and leisure industries has led to a large increase in career options for those with sporting qualifications, such as coaching, sports development, sports science and physiotherapy.



## BTEC Sport Extended Certificate

### Entry Requirements

Five GCSEs including Maths and English Language: a minimum of three GCSEs at grade 4 and two GCSEs at Grade 5.

**Exam Board:** Pearson Edexcel

### How will I be assessed?

A mixture of coursework and internally and externally set controlled assessments plus exams across the two years.



# STATISTICS

## What is it?

The A Level offers the chance to study how statistics are applied to make sense of the world around us, and learning how to use and apply statistics resulting in being able to confidently work with data across many formats.

## What will I study?

You will study a variety of topics including: Probability distributions; Summarising & displaying data; Expectation; Correlation and regression; Normal distribution; Statistical hypothesis testing.

## Why choose Statistics at BSFC?

Statistics is a course that very few schools and colleges in the region offer as an option. It allows students to completely focus on one aspect of Maths and our expert teachers help students to learn how to process and analyse data to a high level, which is a much sought-after skill and desirable in a whole range of careers.

## How will Statistics prepare me for the world of work?

The fundamental statistical and lateral thinking skills developed by students are invaluable across all kinds of disciplines and careers, not just those that are explicitly maths-related. The ability to understand and analyse data is an increasingly important skill in a world of constant change.



## A Level Statistics

### Entry Requirements

Five GCSEs including Maths and English Language: a minimum of three GCSEs at grade 4 and two GCSEs at Grade 5.

### Additional Entry Requirements

Grade 5 in Maths (higher paper).

### How will I be assessed?

Exams at the end of Year 2.



# TEXTILES

## What is it?

Observing and experimenting with textiles media and techniques, using your skills as a creative designer with an interest in fashion, interior design or textiles art to flourish with your own ideas.

## What will I study?

Working to briefs, a personal investigation and developing a portfolio of improving and expanding use of textiles media and techniques.

## Why choose Textiles at BSFC?

Textiles A Level nurtures students' creativity, enhances practical skills in fabric manipulation, and enables students to develop a unique portfolio. This course prepares you for diverse careers in fashion, interior design, and textile industries. Some of our former students have gone on to further study at prestigious universities such as Central Saint Martins.

## How will Textiles prepare me for the world of work?

Textiles involves solving problems by combining creative, practical and technological skills.

## A Level Textiles

### Entry Requirements

Five GCSEs including Maths and English Language: a minimum of three GCSEs at grade 4 and two GCSEs at Grade 5.

### Additional Entry Requirements

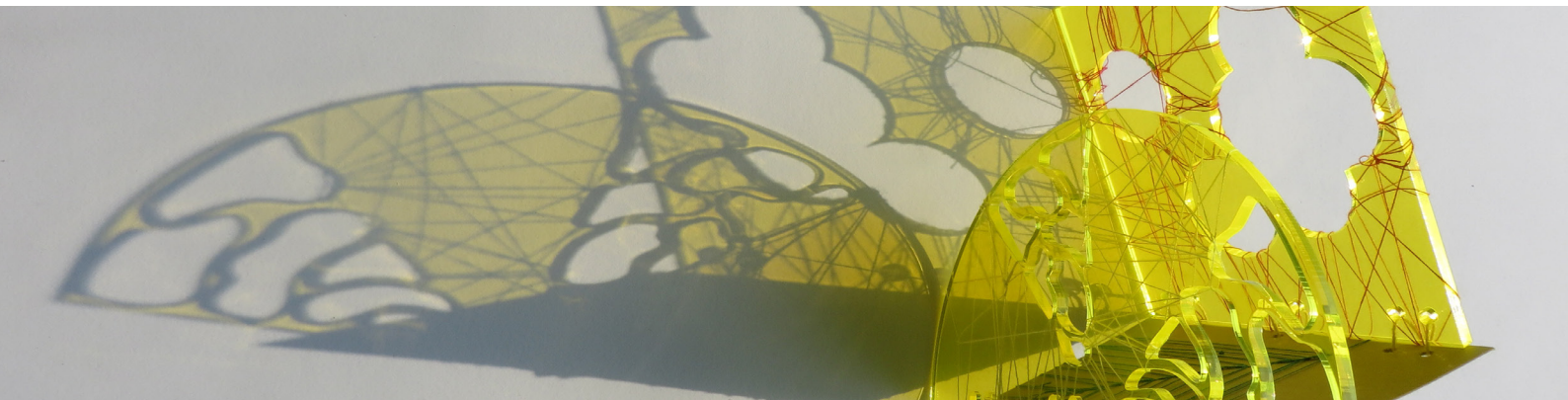
Grade 4 in Art.

**Exam Board:** AQA

### How will I be assessed?

60% coursework; 40% exam projects.

Summer Art Show 2024





# EPQ

Worth **half an A Level**  
(28 UCAS points)

It's recognised by **universities and employers**

Many universities give **lower A Level offers** to EPQ students

**Extended Project Qualification (EPQ) is an additional qualification you can take alongside your other subjects. It offers you the opportunity to research a subject area to a degree-level standard.**

You do not need to apply for EPQ as part of your initial course choices. You will be given the opportunity to add EPQ to your programme during your first year of studies.

### What will you do for your EPQ?

- EPQ gives you the chance to choose a topic you are passionate about to independently research.
- No matter where your interests lie, the EPQ is the perfect opportunity to try something different.
- You decide the topic and your project can take a variety of forms such as a dissertation or a practical project.
- You can stage a fashion show or design a carbon-neutral house or research ground-breaking cancer therapies or start the novel you have always wanted to write.
- You will provide a proposal; complete a logbook recording your experience and deliver a presentation on your final dissertation, or in the case of practical projects, an artefact or production.

### What support will you have during your EPQ?

You will be supported by a supervisor who will help you develop your research skills.

### What transferable skills will you develop through your EPQ?

EPQ is taught in a university style, in small group tutorials. This qualification prepares you for both higher education and employment.

- The focus is on all of those crucial skills that you develop as you take a project through from drawing board to delivery, allowing you to carve out your unique pathway and follow your interests.
- EPQ is well-regarded by universities and is equivalent to half an A level.
- EPQ provides evidence that the transition from college to university will be a smooth one for students who have successfully demonstrated their aptitude for independent learning.

2024 Results: A\* - B **100%**





# GETTING TO COLLEGE

We are easily accessible from all areas of Wirral, Merseyside and Cheshire by bus, train, or car.

We have five different **subsidised College bus services**, which run every day straight to the College doors and can be accessed by buying an annual pass.

Bursary students are entitled to a free bus pass.



There are five public bus stops right outside of College.



Birkenhead Park train station on the Wirral Line is just a ten minute walk from College.



There is plenty of parking around the College.





# FINANCIAL SUPPORT

We are committed to ensuring that all students have access to the right resources to be successful in their academic studies and remove any barriers to participation.

**For eligible students, financial support is available to help cover:**



## **Travel to and from College**

(if you live more than a mile away from the campus)



## **College meals**



## **Compulsory College trips**



## **Selected learning materials**

For full details, visit - [www.bsfc.ac.uk/college-information/bursary-scheme](http://www.bsfc.ac.uk/college-information/bursary-scheme)



# HOW TO APPLY

**Apply Now!**

Applying for a place at the College starting in September 2025 is easy.

**1 Fill out an online application form**

Go to: [www.bsfc.ac.uk/application-form](http://www.bsfc.ac.uk/application-form)  
or scan the QR code



**2 Get invited into College for a Guidance Interview**

**3 Get offered a place at the College!**





# Sixth Form Colleges in the country

*Source: Sixth Form College Association Six Dimensions Report 2024*

**Birkenhead Sixth Form College**

Park Road West, Cloughton, Wirral, CH43 8SQ

0151 652 5575 / enrol@bsfc.ac.uk

**bsfc.ac.uk**

All information correct at time of print (January 2025) -  
Please check the College website for the most up to date information.

