

# To too or two ?

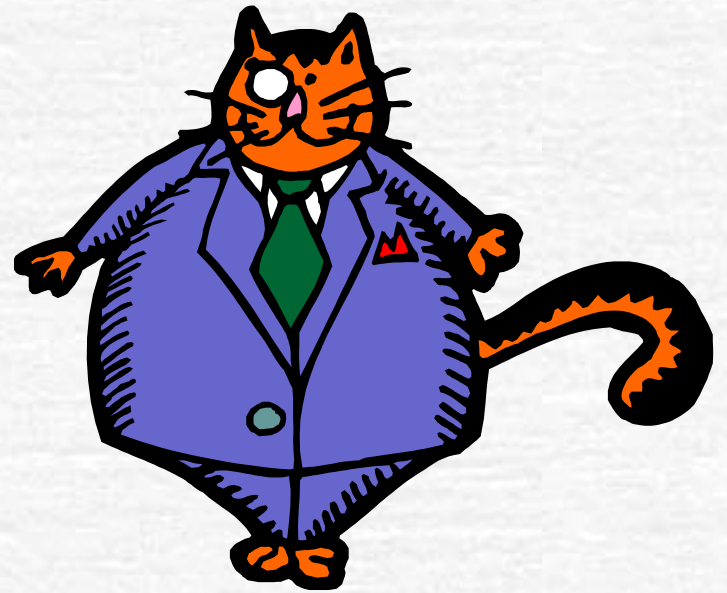
☛ To

☛ I am going to the shops.



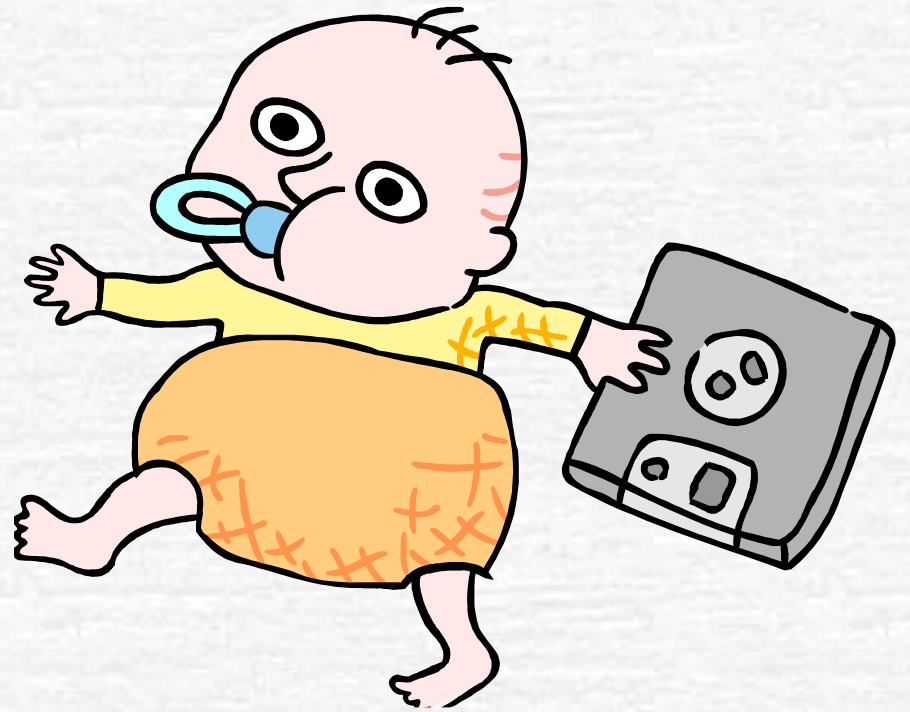
# Too (meaning number 1)

- Too
- The cat ate **too** much.



# Too (meaning number 2)

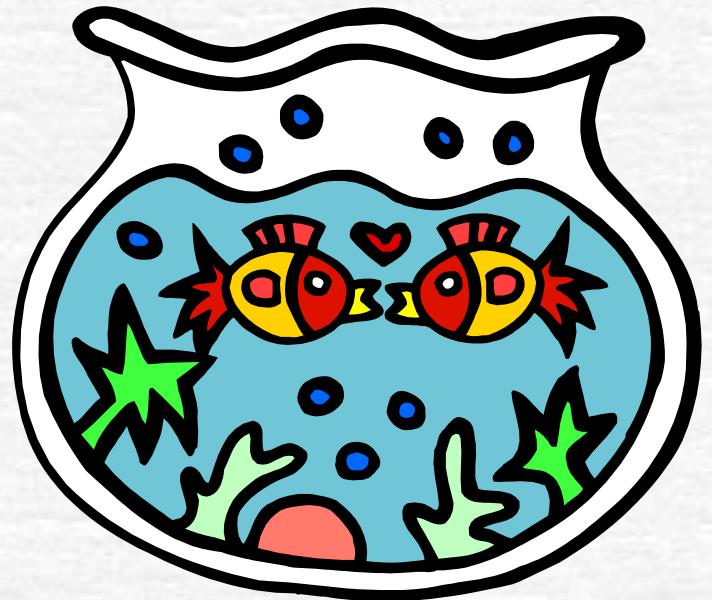
- Too
- Can I come too?



Two

Two

There were two fish.



# Complete the sentence.

- ☞ There were \_\_\_\_\_ many flies.
- ☞ Let's go \_\_\_\_\_ the swimming baths.
- ☞ I ate \_\_\_\_\_ bars of chocolate.
- ☞ Tom walks \_\_\_\_\_ school.
- ☞ I want some trifle \_\_\_\_\_ please.

