

# HISTORY SKILLS



# Key Words

There are many key words in History!! In the word search below are some of the ore common words. Try to find them, then see which words you can define (you can us a dictionary or the internet to help you).

H	A	P	P	E	N	C	W	V	C	S	M	Q
B	I	Y	I	J	Y	R	O	T	S	I	H	W
Y	M	S	Y	K	O	V	Q	D	T	D	N	D
E	N	E	T	I	M	E	L	I	N	E	B	A
A	B	F	U	O	L	W	C	E	G	F	V	T
R	X	Y	N	R	R	E	M	Y	O	R	C	E
T	Z	T	W	E	K	I	N	P	L	A	C	E
Y	H	H	Q	T	U	Y	A	H	L	U	V	Y
U	Y	X	E	Y	J	S	G	N	K	E	G	U
I	T	C	L	K	T	U	O	J	N	I	F	H
O	R	V	P	M	H	I	B	T	Y	O	E	N
C	H	R	O	N	O	L	O	G	Y	P	W	B
Q	E	U	E	V	D	O	E	O	H	O	S	F
W	D	I	P	C	S	P	W	P	B	M	A	W

HISTORIAN \_\_\_\_\_

PAST \_\_\_\_\_

TIMELINE \_\_\_\_\_

EVENT \_\_\_\_\_

YEAR \_\_\_\_\_

DATE \_\_\_\_\_

MONTH \_\_\_\_\_

AGO \_\_\_\_\_

CHRONOLOGY \_\_\_\_\_

HISTORY \_\_\_\_\_

PLACE \_\_\_\_\_

HAPPEN \_\_\_\_\_

# How is time divided up?

Put the following words in order, from the shortest to the longest.

Century

Hour

Second

Decade

Year

Week

Month

Millennium

Day

Minute



Draw a line to match the words below to their definition:

Decade

Century

Week

Millennium

Year

100 years

1000 years

10 Years

365 days

7 Days

Why do you think that knowing this is important for history?

---

---



# What are BC, BCE, AD and CE?

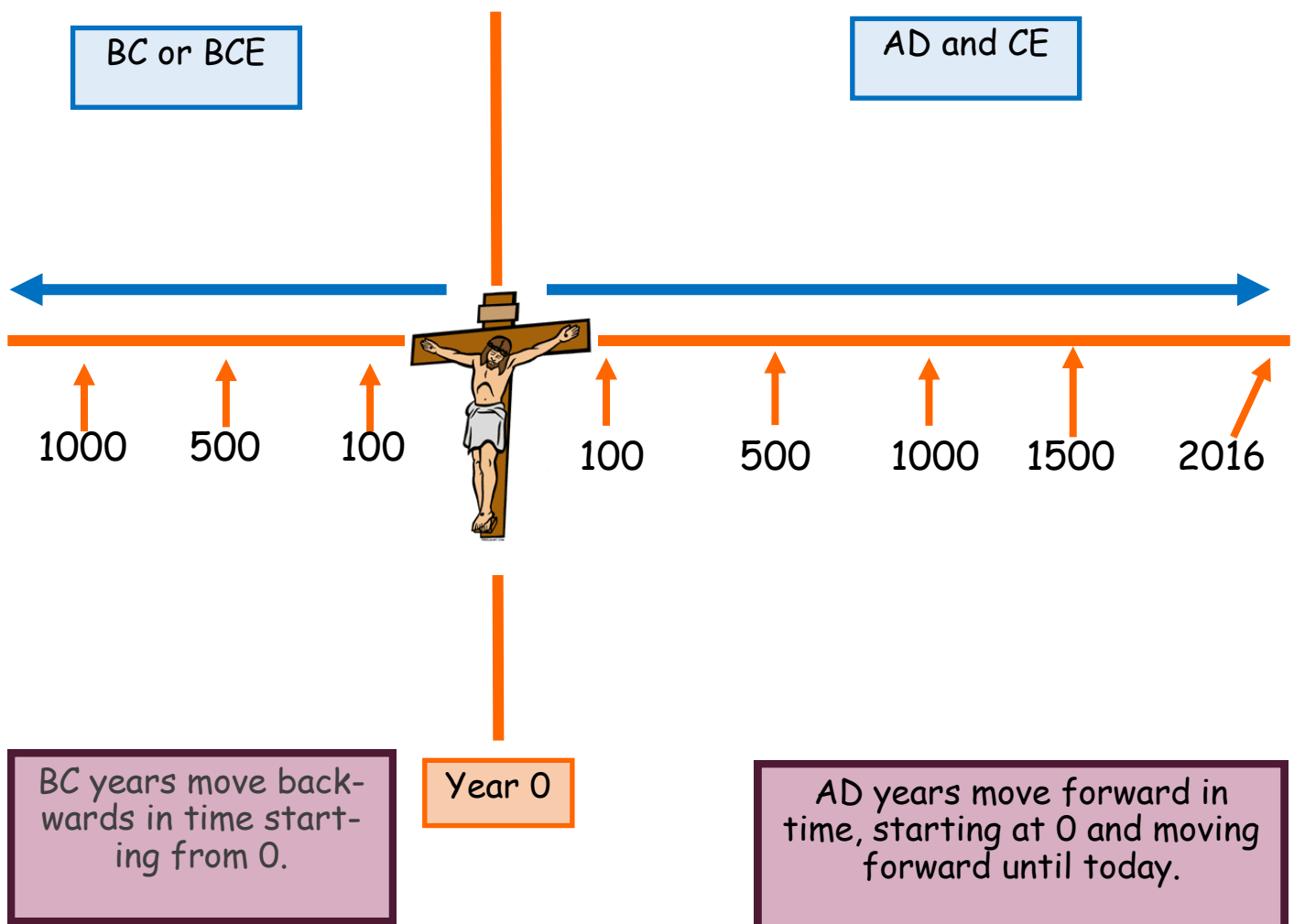
Historians often talk about years as being BC or BCE and AD or CE. This is another way of dividing time. It makes it easier when talking about large areas of time.

## BC and BCE

BC means Before Christ and refers to the time BEFORE Jesus was alive. Many historians now use BCE that means Before Common Era as not everyone believes in Jesus. The Common Era is the years 0–2020 so BEFORE common era is earlier than the year 0.

## AD and CE

AD stands for Anno Domini and refers to the time after Christ. CE means common era which is any time from the year 0.



# What are BC, BCE, AD and CE?

Using the information from the previous page, add in the missing words.

## BC and BCE

BC means B\_\_\_\_\_ C\_\_\_\_\_ and refers to the time BEFORE J\_\_\_\_\_ was alive. Many historians now use BCE that means B\_\_\_\_\_ C\_\_\_\_\_ E\_\_\_\_\_ as not everyone believes in Jesus. The Common Era is the year 0–2020 so BEFORE common era is earlier than the year 0.

## AD and CE

AD stands for A\_\_\_\_\_ D\_\_\_\_\_ and refers to the time after C\_\_\_\_\_. CE means common era which is any t\_\_\_\_\_ from the year 0.

Put this list of year in the correct order—Starting with the EARLIEST and ending with the most recent.

2008 AD
54 BC
33 AD
2008 BC
1008 AD
10,000 BC
0
410 BC



Put this list of year in the correct order—Starting with the MOST RECENT and ending with the earliest.

2000 CE
0
123 BCE
2010 BCE
2001 CE
22 BCE
72 CE
1599CE

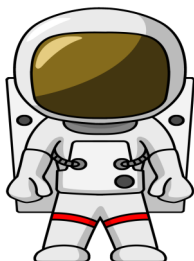


# Chronology

Chronology is a long word, which means putting dates, times and events in order. Look at the images below and put them into Chronological order by writing the letter below the picture into the boxes. (Clue: it spells a word!!)



H



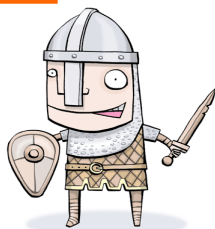
Y



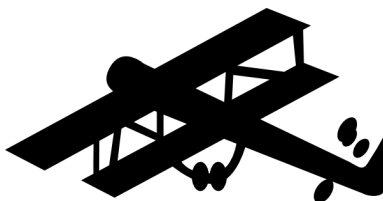
I



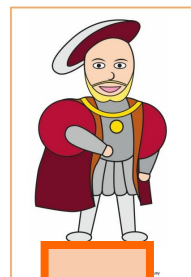
S



T



R



H

H

How did you work out the correct order?

Why do you think it is important to put historical events in order?

# Chronology

Cut out these pictures and glue them into chronological order:



Battle of Hastings 1066



Romans invade Britain 43 AD



Great Fire of London 1666



Queen Victoria is born 1819



King Charles was executed 1649



London hosts the Olympic Games 2012



Elizabeth II becomes Queen 1952



Henry VIII becomes king 1509



London is bombed 2005



Terrorist Attacks in New York 2001



Industrial Revolution begins 1750



The English public votes to leave the European Union 2016

# Chronology

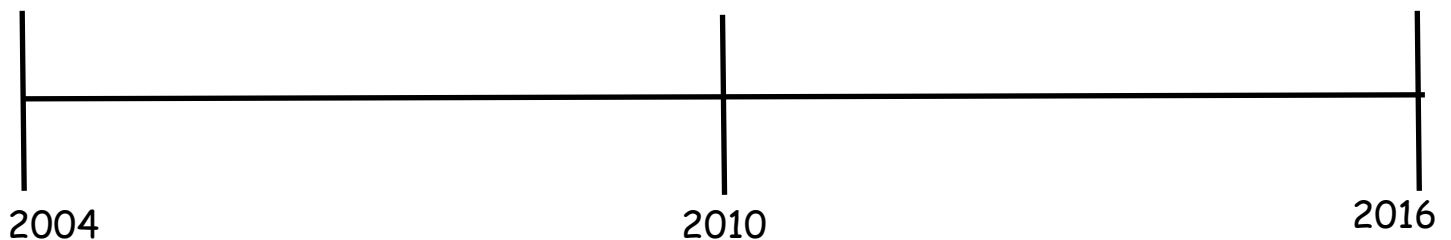
Stick you picture in chronological order on this page!!



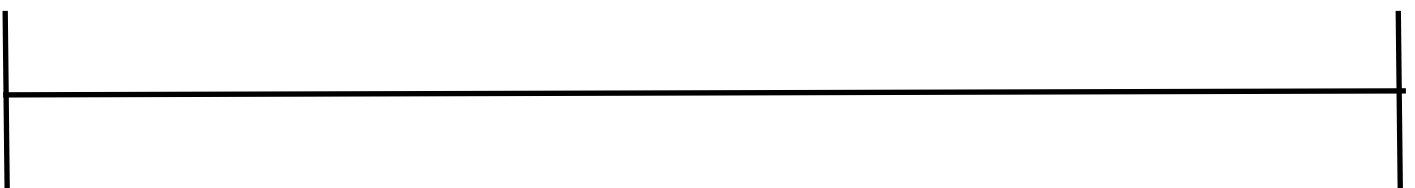
# Timelines

A time line is a way to put information in chronological order. It makes it very clear where event happen in time. Add the information to the following time line about Bob.

Bob was born in 2004	His Sister, Brenda was born in 2010.	He started secondary school in 2015.	He went on holiday to Florida in 2013
He broke his leg in 2011.	His Nan died on 2009.	He went to his first football match in 2010.	He won his first football championship in 2016.



Draw your own timeline with 8 events:



# Evidence

As Historians we have to look at evidence, from this we have to try to deduce, or work out, information. Look at the evidence below and answer the questions about this person:



Is the per-  
male or fe-  
male?

son

---

What mode of transport do they use?

---

What is their diet like?

---

Do they have any pets?

---

What else can we assume?

---

# Types of Evidence



Historians are like detectives because they use **SOURCES** and clues left by people of the past. Evidence can be discovered in one of 3 different ways.

Written

Physical

Spoken

Label the following images with which of these three categories it fits in:



--	--	--



--	--	--

Historians use different terms for different types of evidence.

These are w \_\_\_\_\_ evidence for things like \_\_\_\_\_, s \_\_\_\_\_ evidence for things such as \_\_\_\_\_ and p \_\_\_\_\_ evidence for \_\_\_\_\_.

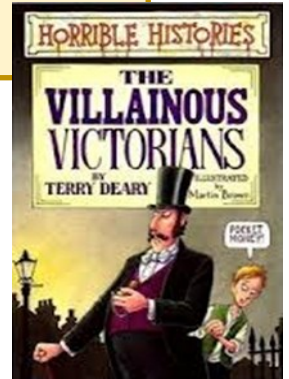
# Primary and Secondary Sources

In History we get our evidence from two different types of sources:



**Primary** sources were made or written at the time an event happened.

**Secondary** sources are made after the time or by someone who wasn't there.



Once we

know the type of historical evidence we have, we need to decide if it was made at the time of the event and therefore is a \_\_\_\_\_ source; or if it has been made later by people who weren't at the event, making it a \_\_\_\_\_ source.

## Examples of Primary Sources

- Diaries
- Newspapers
- Letters
- Photographs
- Buildings
- Museum displays
- Recordings

Historians use Primary sources to make Secondary sources!

## Examples of Secondary Sources

- School text book
- TV programmes
- Films
- Plays
- Novels and stories
- History books
- The Internet



# Primary and Secondary Sources

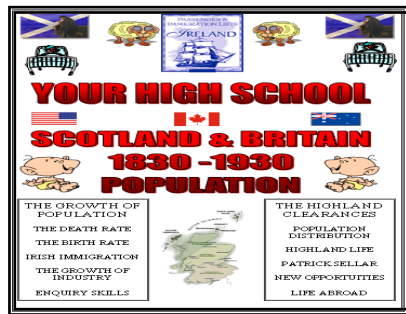
A diary written by Elizabeth I is \_\_\_\_\_ evidence. We know this because \_\_\_\_\_.

A film made by Elizabeth I is \_\_\_\_\_ evidence. We know this because \_\_\_\_\_.

Sort the evidence below into Primary and Secondary:



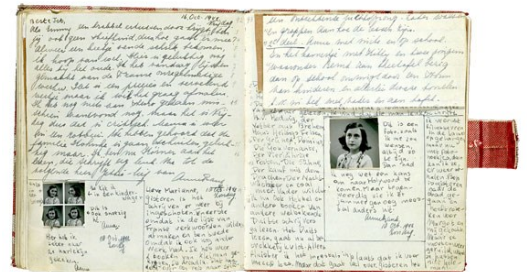
A Gun dated from 1879



A History textbook



Queen Elizabeth I



Anne Frank's Diary



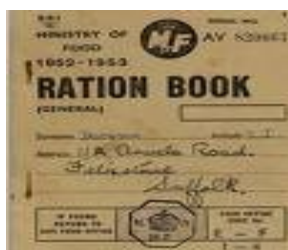
WW2 computer Game



An American poster dated from the 1880's.



Fossilised bones of a saber-toothed cat



A ration book from WW2



A film about the Wild West



World War 2 veteran talking about his experiences in the war.

# Categorising Historical Events

Historians study different types of events through time. Historians group these events into topics or themes. This makes it easier for people who are interested in history to identify historical changes and study the affect on people in the past and through time.



Match the category to it's definition.

Political

How people earn money and spend their money.

Economic

To do with developments in technology and medicine

Social

To do with war, power, government and rights.

Technology

People's everyday life at work and at home.

Why do you think they are split into categories?

---

---

---

Which do you think would be the most interesting category to study and why?

---

---

---

# Categorising Historical Events

Sort these events into the four categories. Put them in *CHRONOLOGICAL* order in your answer box!

1918—Women are allowed to vote.	1946—Child benefit was introduced in the UK.
1947—National Health Service was set up.	1872—First FA Cup final.
1829 - first passenger steam train	1908 - first pensions given to people over 70.
1939 - second world war began.	1801 - Britain and Ireland make one country.
1981 - first home computer	1839 - Charles Dickens wrote "Oliver Twist"
1970 - equal pay for men and women.	1963 - First Beatles songs were recorded.

Political	Economic
Social	Technology

# Assessment

1. What does chronological order mean? (1)

2. What does BC mean? (1)

3. What do we mean by AD (1)

4. Julius Caesar first visited Britain in 55BC. He came back the following year was the year then? (1)



5. How many years are in the following?(3)

- Millennium
- Decade
- Century

6. Put the following events in chronological order.(3)

Prince William and Kate get married (2011)

Queen Victoria dies (1901)

Queen Elizabeth II celebrates her silver jubilee (1977)

7. Give an example for each type of evidence. (3)

- Written
- Spoken



- Physical



# Assessment



8. Are the following Primary or Secondary sources? (5)

Canterbury Cathedral P/S

Richard III by William Shakespeare P/S

Dinosaur bones P/S

The Film "Titanic" P/S

Letters from Princess Diana at William and Harry. P/S

9. Which of these events are political or economic? (4)

a. House prices going up P/E

b. Britain become allies with America with the war

against terrorism P/E

c. First female president of USA P/E

d. Council tax replaces the Poll tax and rates P/E

10. Which of these events is technology or social? (4)

Buy 1 get 1 free on pub meals becomes popular in Britain T/S

The mobile phone was introduced. T/S

The electric car drops in price and becomes affordable. T/S

Music becomes downloadable from the internet. T/S

