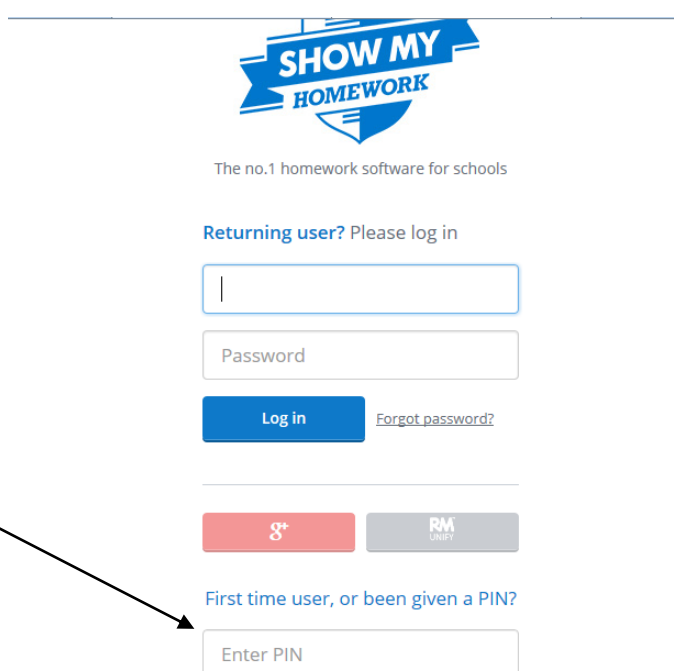


How to use 'Show my homework' – parents:

- Go to school website & click on 'show my homework'



Enter pin





The no.1 homework software for schools

Almost there, update your details

 I do not have an email address

- ✓ Make a note of your username
- ✓ Make a note of your password
- ✓ Keep it somewhere safe

No need to fill in password details simply tick this box & press log in

Welcome, **Lynka**
Edit profile

Select student

Select what information you would like to view for any of your students below

Luke Abbass
Last activity 2 months ago

- > Calendar
- > Homework
- > Gradebook
- > Notice board

Recovery PIN - J11885064

Click on your son/daughter's name

Click on your son/daughter's name

Homework is shown

The screenshot shows the 'Show My Homework' app interface. At the top, there is a blue header with a back arrow and the text 'Show My Homework'. Below the header, the user's name 'Luke Abbass' is displayed. A navigation menu on the left includes 'Back', 'Calendar', 'Homework', 'Gradebook', and 'Notice board'. The main content area is titled 'Homework' and has tabs for 'Recent' and 'Upcoming'. A search bar is present with the text 'Filter list by using key words in the search box' and a checkbox for 'Only show overdue homework'. Two homework items are listed: 'Wednesday 27 January CBD's in rich cities' and 'Friday 22 January Sitcom Unit Media Studies'. An arrow points from the text 'Click on your son/daughter's name' to the user's name 'Luke Abbass'.

Click on the homework to see details

And resources needed

The screenshot shows the details page for the homework item 'CBD's in rich cities'. The page has a blue header with a back arrow and the text 'Show My Homework'. The user's name 'Luke Abbass' is displayed. The main content area is titled 'CBD's in rich cities' and has tabs for 'Description' and 'Results'. The 'Description' tab is active. The task description is 'Complete the GCSE Question'. There are two buttons: 'Set on Mon 25 Jan' and 'Due on Wed 27 Jan'. There is a section for 'Important information' with two bullet points: 'this homework will take approximately 30 minutes' and 'Miss. L Stevenson would like you to hand in this homework in class'. There is a section for 'Resources to help you' with a link to 'CBD_s_in_urban_areas_Q.doc'. There is a section for 'Need help from a tutor?' with a description and two buttons: 'Book tuition' and 'Learn more'. An arrow points from the text 'Click on the homework to see details' to the homework item 'CBD's in rich cities'.

Click on calendar to see when and what homework is being given & when to complete.

← Show My Homework EN

Home / Luke Abbass / Calendar

Calendar

Select a year Select a type Select a subject Select a teacher All classes

Prev Next Today Jan 25th - 31st, 2016

■ Homework ■ Spelling Test ■ Quiz ■ Differentiated Homework ■ Class Test

| Monday 25th Jan | Tuesday 26th Jan | Wednesday 27th Jan | Thursday 28th Jan | Friday 29th Jan | Saturday 30th Jan | Sunday 31st Jan |
|--------------------|---------------------|---|----------------------|--------------------|----------------------|--------------------|
| | | CBD's in rich cities 11B/Gg1 Geography Miss. L. Stevenson | | | | |

Click on noticeboard for any announcement

← Show My Homework EN

Home / Luke Abbass / Notice Board

Notice Board

Prev Next This month January 2016

| Monday | Tuesday | Wednesday | Thursday | Friday | Saturday | Sunday |
|--------|---------|-----------|----------|--------|----------|--------|
| 28 | 29 | 30 | 31 | 1 | 2 | 3 |
| 4 | 5 | 6 | 7 | 8 | 9 | 10 |
| 11 | 12 | 13 | 14 | 15 | 16 | 17 |
| 18 | 19 | 20 | 21 | 22 | 23 | 24 |