

What should I already know?

- I can talk about how we look after and care for a plant.
- I know what happens to trees and plants during the different seasons.

Key Vocabulary

roots	The part of the plant in the ground.
stem	The main body or stalk of the plant.
seed	A part that grows into another plant.
bulb	A part that grows into a plant.

Key Knowledge

Wild Plants



dandelion



daisy



buttercup



nettles

Garden Plants



fuchsia



pansy



sweet pea



sunflower

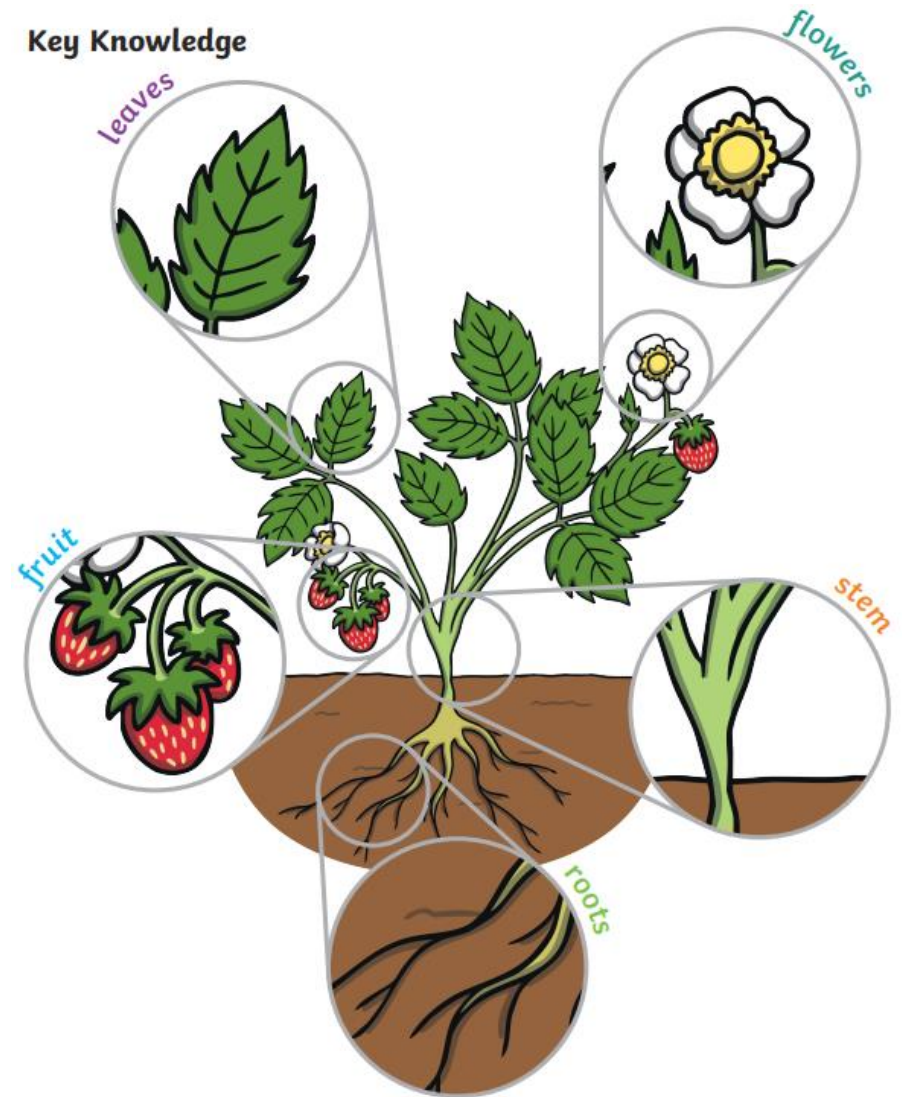


Evergreen Trees – A tree that remains green during all the seasons.

Deciduous Trees – A tree that changes with the seasons.

Key Knowledge

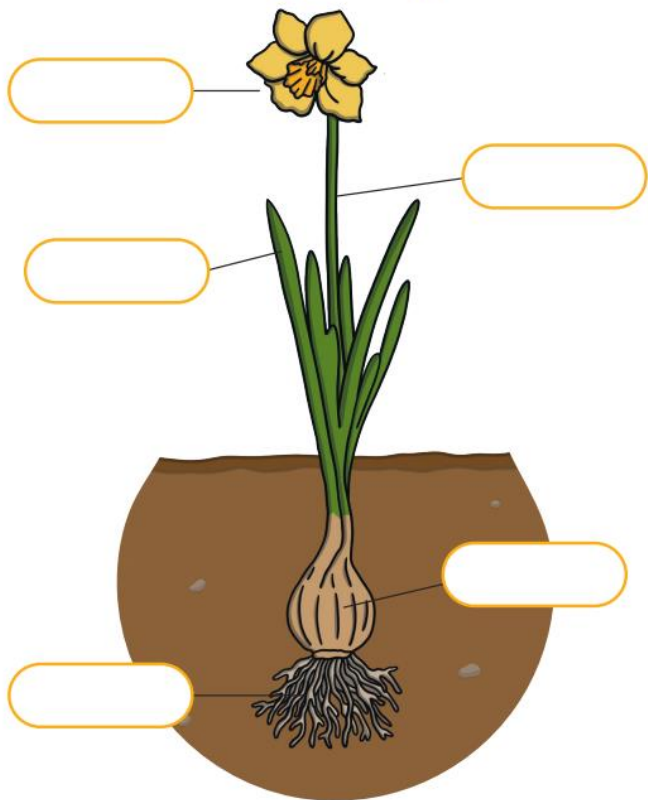
Key Knowledge



Post Assessment – Science – Biology - Plants

Label the parts of the plant.

Parts of a Daffodil



What are the names of these plants and trees?



What does a plant need to grow? (Draw pictures and label)