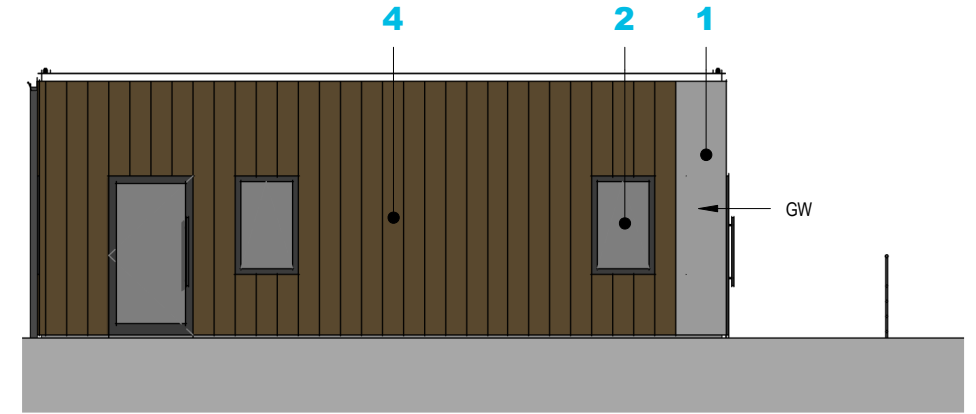
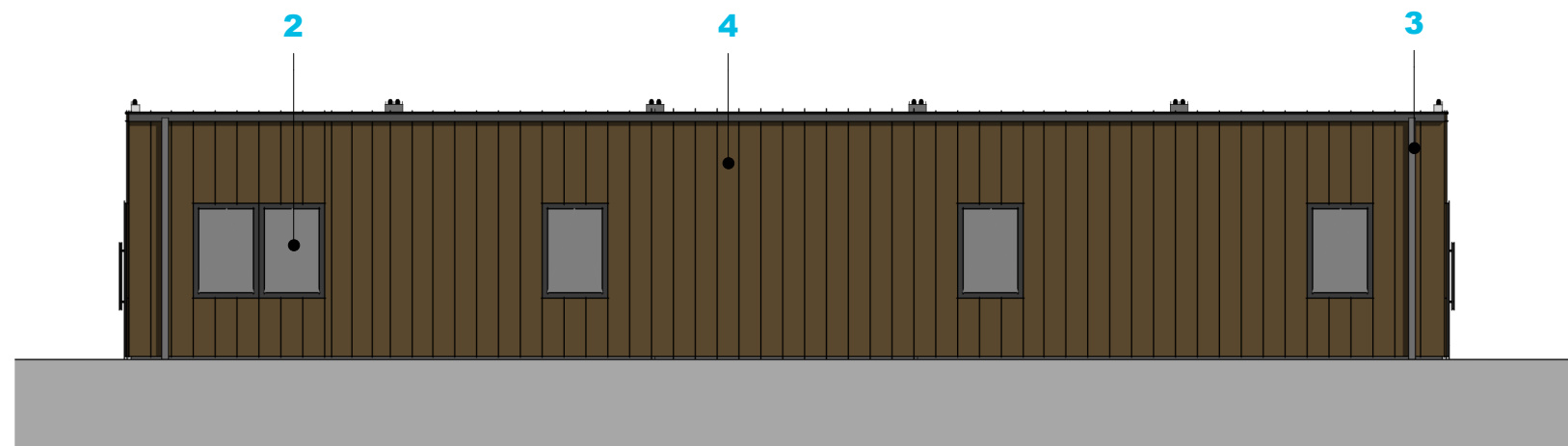




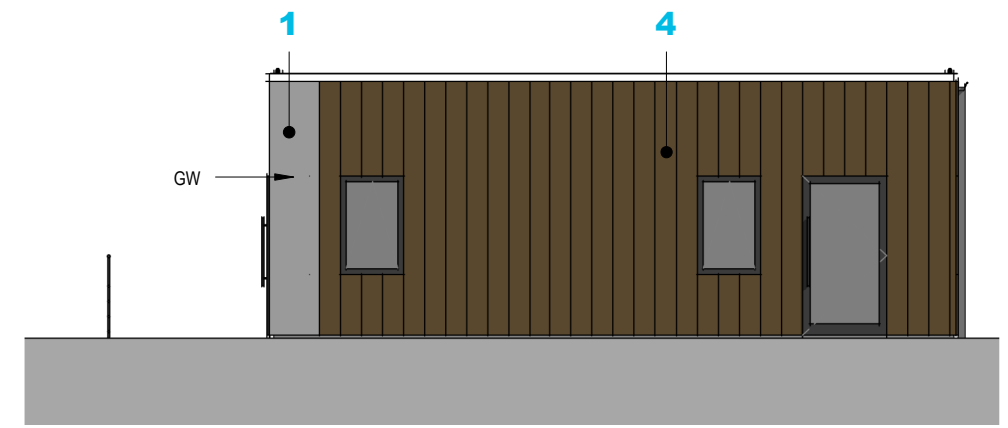
ELEVATION 1 - STAND-ALONE BLOCK  
1 : 100



ELEVATION 2 - STAND-ALONE BLOCK  
1 : 100



ELEVATION 3 - STAND-ALONE BLOCK  
1 : 100



ELEVATION 4 - STAND-ALONE BLOCK  
1 : 100

3	14.06.16	Cladding colour references added	LH
2	23.05.16	PLANNING SUBMISSION	LH
1	17.05.16	Pre-Planning - For comment	LH

Rev:	Date:	Description:	By:	Rvw:
------	-------	--------------	-----	------

**architecture519**

The Studio, Candle House, 1 Wharf Approach,  
Granary Wharf, Leeds, LS1 4GH  
E: Leeds@architecture519.com  
W: www.architecture519.com  
T: 0113 213 5656

Client: **Caledonian Modular**

Project No: 2329 Project Name: Bramham Primary School, Leeds

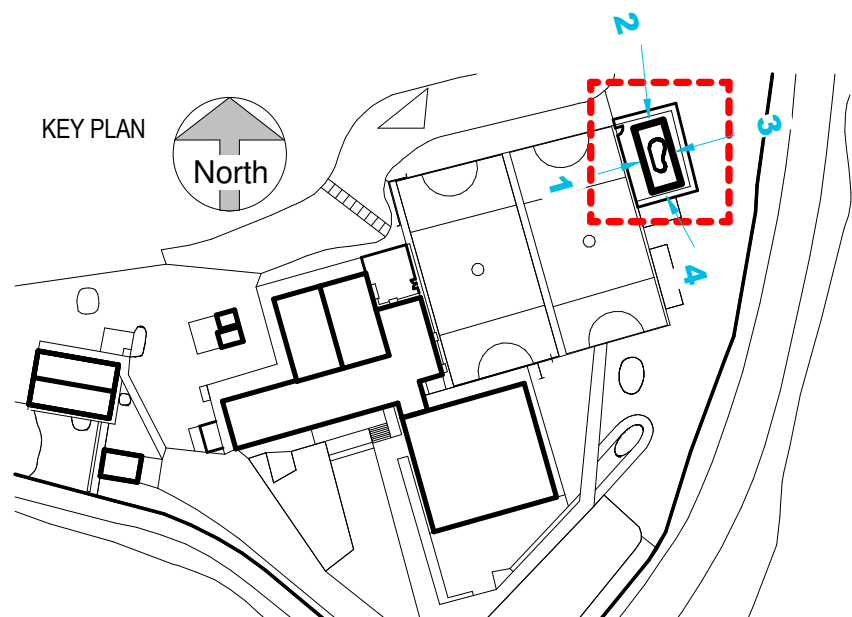
Project	Originator	Zone	Level	Type	Role	Number
2329	519	ZZ	XX	DR	A	2103

PROPOSED ELEVATIONS - STAND-ALONE

Status:	Code	Suitability description
Revision:	Code	Revision status
	3	

Created By:	Reviewed By:	Date:	Scale at A3:
AH	ML	05.05.2016	As indicated

This document is © architecture519 Ltd. If in doubt ASK. Drawing measurements shall not be obtained by scaling. Verify all dimensions prior to construction or product manufacture. Immediately report any discrepancies on this document to the Architect. This document shall be read in conjunction with associated models, specifications and related consultants documents.



**MATERIALS KEY**

- 1** KINGSPAN MICRORIB INSULATED PANEL, COLOUR: As Annotated  
MG - Merlin Grey  
GW - Goosewing Grey
- 2** UPVC WINDOWS AND DOORS, COLOUR: GREY RAL 7016. FIXED WINDOWS TO ELEV 3
- 3** SQUARE SECTION RWP, UPVC, COLOUR: BLACK
- 4** PRE-FINISHED WEATHERBOARD CLADDING. VULCAN VERTICAL WIDE VEE - WALNUT

