

# BREDENBURY PRIMARY SCHOOL



## Summer Newsletter 19th June

### Attendance

Whole school – 95.5%

We are going to start some friendly competition between the classes. Each week we will check to see which class has the best attendance and they will get extra playtime on a Friday.

Nursery—94%    Class 1 – 97%    **Class 2—100%**    Class 3—89%

**Winners— Class 2**



### Value of the Month

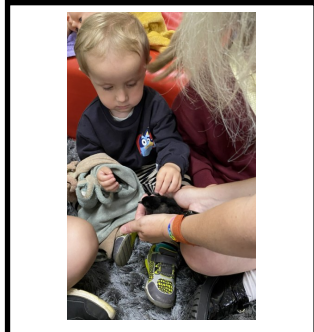
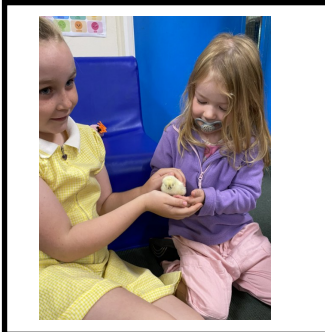
**Tolerance**

*“When we welcome differences, we make room for magic.”*

## Class News

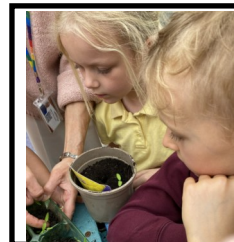
### Nursery

The nursery children had a lovely time meeting and observing Bertie’s chicks. They enjoyed watching them explore and learning about how they grow. We enjoyed Class 2 coming and join us in seeing the chicks and Sharing this special experience together.



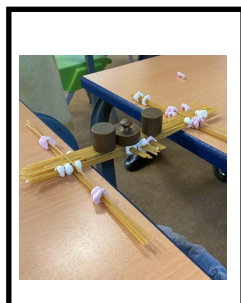
### Class 1

This week in science, we have compared the cress we have been growing, one in the dark and one in the light. We also started another scientific enquiry, do plants need water? The children then re-potted tomato plants we have grown from seed. The children were thrilled to have a close-up experience with the chicks Tilly brought in from home.



### Class 2

Class 2 enjoyed a STEM lesson this week during their Science time, where they had to use their engineering knowledge to construct a bridge using only spaghetti and marshmallows. They were then tested to see if they could hold up to 500g of weight. 2 survived the heaviest weight. Lots of fun and leaning was had by all.



### Class 3

This term, in Science, we have been learning about the human circulatory system. Last week we learned about the components of blood and this week we made a smoothie to represent them by blending raspberries, marshmallows, sprinkles and orange juice.





## Reading Champions



Congrats to our reading champions this week!



## Forest Schools



Well done to our forest school superstars!



## Stars of the Week



Brilliant work from our stars of the week!



## Attendance

Regular school attendance plays a vital role in every child's success, both academically and socially. When children attend school consistently, they build strong learning habits, develop confidence, and keep up with the pace of lessons, making it easier to achieve their full potential. Just as important, being in school every day helps children form friendships, feel a sense of belonging, and develop key social skills. We appreciate your support in ensuring your child arrives on time and attends as regularly as possible, as every day truly makes a difference.

## Nursery Reminder

This is a quick reminder that **all** nursery sessions will need to be booked and paid for in advance using the My Child at School app to ensure we have the required staff needed. If you need help to do this please pop in to the office where we will be happy to help!

### **How to Select Nursery Sessions**

On the My Child at School app, please go to Wrap Around Care and select either Nursery Morning or Nursery Afternoon. You will also be able to book Breakfast Club and After School Care from this section, should you require them. These sessions are available at an additional cost. Breakfast club is £2.50 a session and After School Care is £5.00 a session.

After selecting Morning or Afternoon, you will then be able to choose the days your child will attend.

### **Important Booking Information.**

To ensure we can staff the nursery safely and meet required ratios, all bookings must be made by the Friday prior to the week required.

Please select either of the following:

- N.AMF/N.15 – if your child receives 15 hours funding
- N.30 – if your child receives 30 hours funding
- N.AM / N.PM– if you are paying for a session



## Good to know.



### Your local school SEEKING NEW GOVERNORS

Help local young people aged 11-16 thrive  
Queen Elizabeth School in Bromyard is looking for friendly, thoughtful volunteers to join our Governing Body. If you care about education, wellbeing, and supporting young people in our community, we'd love to hear from you.

- ✔ Training provided
- ✔ Safeguarding checks necessary (DBS included)
- ✔ Highly rewarding role

Visit Our Website  
[www.qehs.co](http://www.qehs.co)

**APPLY NOW** 

## BROMYARD ROUND THE DOWNS

TRAIL RUNNING FOR ALL!

**SUNDAY  
28TH JUNE 2026**

BROMYARD RUGBY CLUB

**10K TRAIL RACE**  
AGE 16+  
Multi terrain trail race with scenic views. Chip timed. Homemade coffee at the finish.

**2KM JUNIOR RACE**  
AGE 4-15  
Chipped trail race for 4-15 year olds. Chip timed. Multi terrain trail run.

**FUN RUN**  
APPROX HALF A MILE  
Chip timed. Non-competitive and open to all ages.

**ENTER NOW AT**  
[www.entrycentral.com/BromyardRTD](http://www.entrycentral.com/BromyardRTD)

10K TRAIL RACE: £16 (16-18)  
2KM JUNIOR RACE: £6 (4-15)  
FUN RUN: £2 (ALL AGES)

FOOD PHOTOGRAPHY RATTLE TROPHIES FREE PARKING

## Make-it Happen Summer Holidays 26 Children's Workshops

Workshop	Date & Time
Bumble Bee Plushie	Wednesday 22nd July 9am - 10am
Flying Saucer Plushie	Wednesday 22nd July 10am - 11am
Milkshake Plushie	Wednesday 22nd July 10am - 12pm
Flower Plushie	Wednesday 29th July 9am-10am
Ice Cream Plushie	Wednesday 29th July 10am - 11am
Watermelon Plushie	Wednesday 29th July 11am - 12pm
Rocket Plushie	Wednesday 5th August 9am - 10am
Pizza Plushie	Wednesday 5th August 10am - 11am
Rainbow Plushie	Wednesday 5th August 11am - 12pm

Book through our website  
[www.make-it-happencreativereams.com](http://www.make-it-happencreativereams.com)

## A Joyful HEART Summer Conference

By HEART Midlands Early Years Stronger Practice ...

### 'A JOYFUL HEART' - AUTUMN CONFERENCE

Sep 11 · 9:30 AM  
Shell Store - Coworking & Office Space Hereford



## FREE MENTAL HEALTH AWARENESS WORKSHOP

We are Farming Minds Charity want to help challenge and break down the stigmas associated with Mental Health in the farming community. We want to help and guide as many people as possible, and let people know that it is ok not to be ok.

**How?**  
Through offering fully funded Mental Health Awareness Workshops designed to raise awareness of Mental Health. Our workshops will involve individuals with the skills to identify signs of struggle with Mental Health and use the tools provided to support those with your Mental Health.

**Topics Covered**

- What is Mental Health?
- Mental Health in Agriculture
- Impacts of Mental Health
- Barriers and Obstacles
- Suicide and Self-Harm
- Symptoms and Warning Signs
- Strategies to manage your emotions
- Support Networks and useful contacts

If you would like to find out more about the workshops or to book a place, please contact:  
Call/Text: **07951 871 161**  
Email: [office@wearefarmingminds.co.uk](mailto:office@wearefarmingminds.co.uk)  
[www.wearefarmingminds.co.uk](http://www.wearefarmingminds.co.uk)



## ENCORE SPECIALIST EYFS MUSIC SESSIONS

Are you looking for a specialist service to enrich your nursery and reception music provision, support the EYFS areas of learning and develop musical skills?

Would you like an in school EYFS music session with songs and musical activities delivered to your children followed by support and advice to you and your staff?

Would you like a bank of resources and song recordings to take away and use?

Encore offers a dedicated 1 hour EYFS music programme. We can work with you to provide a session best suited to you, your children and your setting. This can be a single hour session or a more regular arrangement. Bookings are now being taken for Wednesdays and Thursdays in the new academic year. We bring all the resources and the cost is £40 per session which includes song recordings, resource booklets and useful information about teaching EYFS music.

**For more information and to make a booking:**  
[wendy@encore-enterprises.com](mailto:wendy@encore-enterprises.com)

## SUMMER Skate CAMP

10am - 3pm  
Aged 7+

wed 22<sup>nd</sup> July  
Tue 28<sup>th</sup> July  
Wed 12<sup>th</sup> Aug  
Tue 18<sup>th</sup> Aug  
Wed 19<sup>th</sup> Aug  
Tue 25<sup>th</sup> Aug  
Wed 26<sup>th</sup> Aug

Tickets  
[skatehereford.co.uk](http://skatehereford.co.uk)

## SKILLS, GAMES, FUN

The Core, Foley Trading Est, HR1 2SF

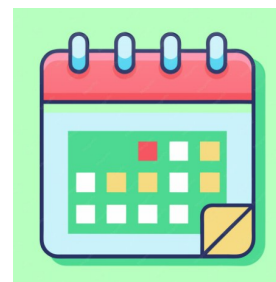
## Next Week

Monday 22nd June	
Tuesday 23rd	PE—Whole School  Nursery Trip to Bishop Frome  Girls Football  After School Clubs:  Art— Class 1 Rounders— Class 2 and 3
Wednesday 24th	
Thursday 25th	After School Clubs: Sports Day Dance—Class 1 Fine art —Class 2 and 3
Friday 26th	PE— Class 1  Forest School— Class 2 and 3  £1 Ice-cream and Lolly sale after school.

## Dates for your diary

### June

Thursday 25th June– Sports Day event afternoon—1.30pm Start



### July

Friday 10th July– School Fayre

Thursday 16th July– End of School Tea Party 12.30pm, Leavers Assembly 1:30pm (Year 6 and whole school class awards) - all invited.

Friday 17th July—End of Summer Term

### September

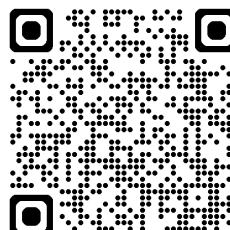
Wednesday 2nd September—Start of Autumn Term

## Support for your child's Health

Unsure on what to do if your child is ill... are they well enough for school?



Is my child too ill for School?



Pharmacy First

**Please ensure if your child has experienced sickness, that they do not return to school until 48 hours since their last bout.**

All events will have individual letters as appropriate. There are lots of trips this half term.

Photos (where possible) for all school events are on Facebook.

**Please check your child's bag at the end of each day.**

**Parking – can we please ensure we do not park across residents' drives.**

Regards,

**Bredenbury Team**