

**FUTURE PHASE 3:
6 CLASSROOM BLOCK;
See right and below.**

NOTE; the site at the top
of Mount Avenue could
be used to locate two
double classroom
temporary units while
the Performing Arts
Accommodation (Phase
1) is being undertaken.

**FUTURE PHASE 2: VACATED
WATERFOOT COUNTY
PRIMARY SCHOOL
CONVERTED TO GRAMMAR
SCHOOL VISUAL ARTS AND
MUSIC ACCOMMODATION**

**BACUP AND
RAWTENSTALL
GRAMMAR
SCHOOL**

**PHASE 1: PERFORMING
ARTS ACCOMMODATION
(DRAMA THEATRE);
See below left.**

**SPORTS
HALL**

For information only the footprint of the
2005 arts block proposal refused planning
permission has been shown outlined in
grey.

**6 CLASSROOM BLOCK - GROUND FLOOR
SCALE 1:200**

CONSULTATION

Note: Dimensions are not to be scaled from this drawing.
All written measurements are to be checked on site by the contractor.

Town Name:
WATERFOOT

Previous Name:

Previous No.

Project

Arts Block for BRGS - Sketch Proposal

Drawing Title
**BRGS SCHOOL DEVELOPMENT
PLAN.**

Scale
1:500
A1

Drawn by:
NBD

Checked by:

Date
JUNE '08



Property Group

Resources Directorate

HEADQUARTERS: County Hall, Preston, PR1 6PE
Tel: (01772) 555555 Fax: (01772) 555555
North Area Office: Poulton-Le-Ferry, FY6 7DE
Tel: (01253) 555555 Fax: (01253) 555555
East Area Office: Accrington, BB5 1CH
Tel: (01254) 222222 Fax: (01254) 222222
South Area Office: Leyland, PR25 1EN
Tel: (01772) 555555 Fax: (01772) 555555

Lancashire County Property Group M&M

Note: All rights described in Chapter IV of the Copyright,
Design and Patents Act 1988 have been generally reserved.

Project No.
EZ005499

Drawing No.
06

Revision

DRAFT

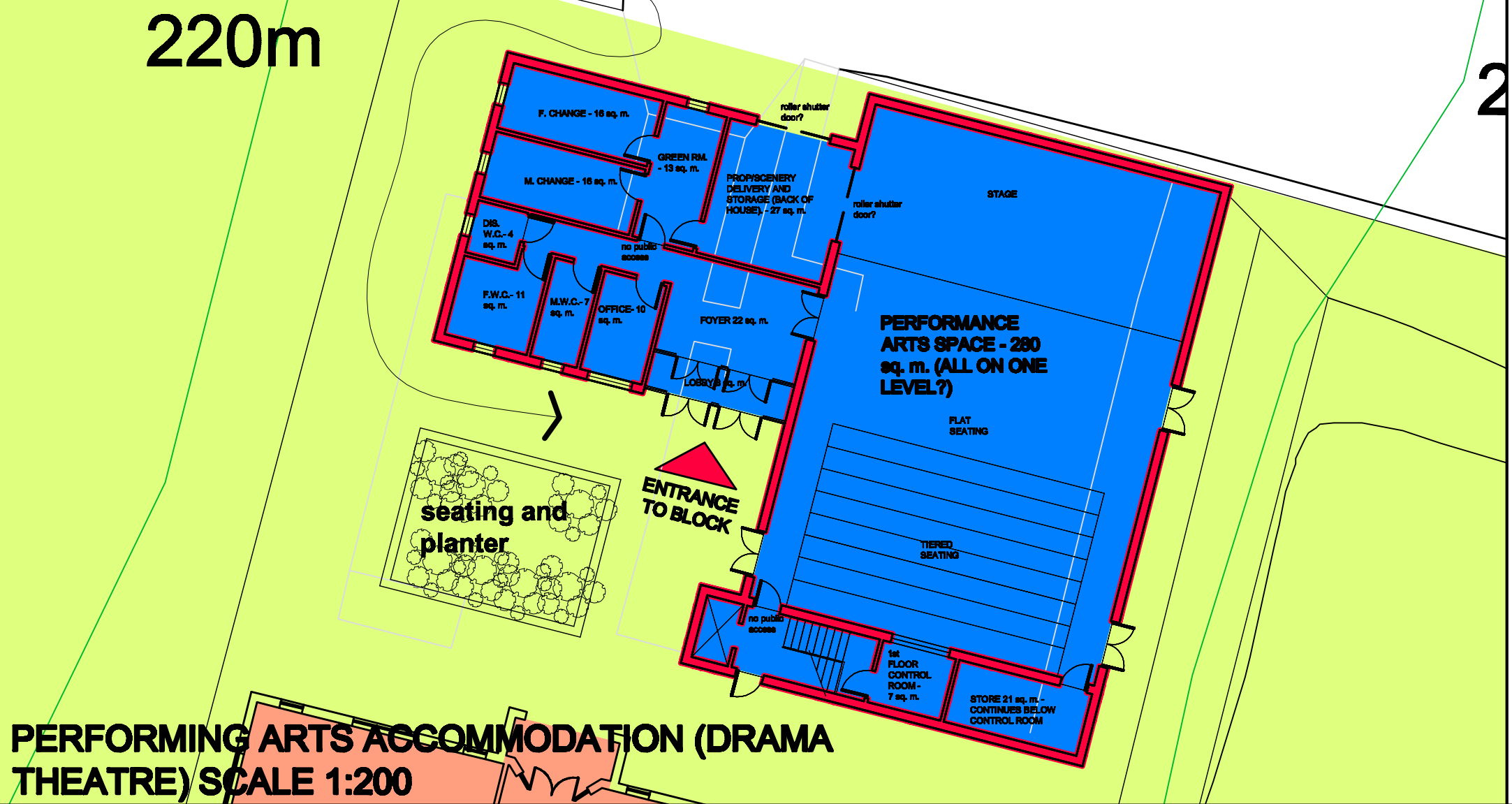
**KEY POINTS OF STRATEGY
ILLUSTRATED:**

**1/ All temporary accommodation
removed from site.**

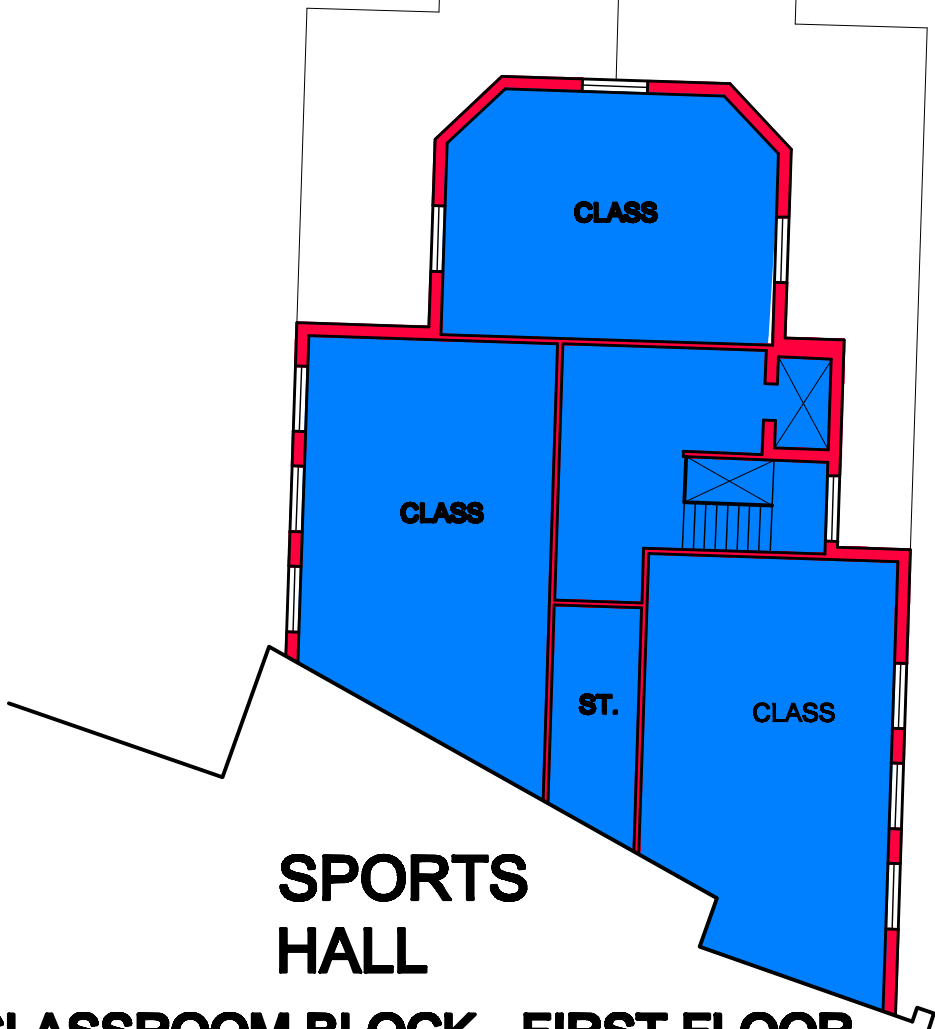
**2/ Achieves adequate spacial
resources for the school.**

**3/ looks to address parking and access
issues in an holistic way (with Primary
School development).**

4/ Minimises impact on neighbours.



**PERFORMING ARTS ACCOMMODATION (DRAMA
THEATRE) SCALE 1:200**



**6 CLASSROOM BLOCK - FIRST FLOOR
SCALE 1:200**