

Year 6 – Term 1 Information and Key Learning

Welcome to Year 6! We hope you have had an excellent summer break and are looking forward to the term ahead. We are sure the children are excited to experience life at the top of the school – they are certainly settling into their new year group and classrooms quickly. This year is sure to be packed with important dates (especially our upcoming residential) and memorable learning experiences in school. This document will explain some of the new things the children will be learning this term and how you can continue to support them at home. Please do not hesitate to get in touch with any questions you may have.

Our learning this term

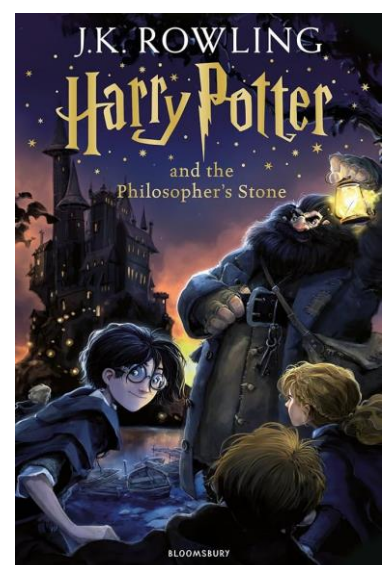
This term our English writing will be based around the world of Harry Potter and the Philosopher's Stone. Throughout the initial weeks we will be looking at the first few chapters of the book, after which the children will write their own narrative of Harry's adventures at Hogwarts. Later in the term, the children will be studying the wider world of these fantasy novels. As part of our learning, we will be writing in a range of different styles as the children piece together non-chronological reports based on the fantastical beasts that Harry Potter encounters.

In maths, the children will start by revising place value and the written formal methods of the four operations, whilst applying these in problem solving and reasoning questions. They will become more fluent with number and will develop their reasoning skills through various learning opportunities.

In geography, the children will build on their knowledge of the cause and effect of natural disasters from around the world, simultaneously improving their geographical skills. During PE, pupils will have the opportunity to develop their tennis coach with Stewart and excitingly we have Forest School. Our Big Question in RE is 'Creation and Science: conflicting or complementary?' in which we will be looking into the Creation Story and seeing how faith and scientific ideas can interlink. We will also be carrying out observational drawing with Mrs Smith in Art linked to our Harry Potter Unit.

Key Information

- PE day is Wednesday (Tennis) and Forest School is Thursday (please note: Forest School is Tuesday 10th September in week 2). Please ensure your child comes to school dressed in their PE kit/forest school clothes.
- Kent Test: Thursday 11th September.
- PGL Residential: 17th – 19th September – Please speak to a member of the year 6 member of staff if you have any questions.
- In Year 6, children have weekly homework set to help prepare them for secondary school. An English and maths activity will be set on a Friday and these are due back in on a Wednesday (coming soon). Pupils are still encouraged to access Spelling Shed (where weekly spellings are set), TTRockstars and Purplemash. Spellings sent home on a Friday and then tested on the following Friday.
- The school library has an array of books on offer – the children will be able to change their books in the mornings. We are asking children to pick a quiz book (Accelerated Reading) and they may choose a free choice book if they would like. Our library book changing day is Friday but the library is also open every lunch time for children to enjoy, as well as change their books.
- Year 6 Meet the Team – Tuesday 9th September 2.45pm



English Key Learning Facts

Key aim: To read and spell Year 5 & 6 common exception words

Below is a list of the key words children should be able to spell

accommodate	ancient	awkward	communicate	convenience	determined
accompany	apparent	bargain	community	correspond	develop
according	appreciate	bruise	competition	criticise	dictionary
achieve	attached	category	conscience	curiosity	disastrous
aggressive	available	cemetery	conscious	definite	embarrass
amateur	average	committee	controversy	desperate	environment

Suggested Activities

Weekly spelling lists will be practised in class and sent home with your child to be tested every Friday. These will correlate with the lists set on Spell Shed. Children are advised to break the spelling down and find any tricky bits, looking for patterns in particular. Another useful activity is to put the words into sentences to reinforce the meaning of the word and its spelling. Games and activities using the words such as word-searches will further support your child's grasp of the spelling.

Mathematics Key Learning Facts

Key aim: To multiply and divide increasingly large numbers

By the end of the term we will have covered the following methods:

Multiplication		Division	
Short Multiplication $\begin{array}{r} 24 \\ \times 6 \\ \hline 144 \\ 2 \end{array}$	Long Multiplication $\begin{array}{r} 24 \\ \times 16 \\ \hline 240 \\ 144 \\ \hline 384 \end{array}$	Short Division $\begin{array}{r} 86 \text{ r } 2 \\ 5 \overline{) 432} \\ \underline{40} \\ 32 \\ \underline{30} \\ 2 \end{array}$	Long Division $\begin{array}{r} 28 \text{ r } 12 \\ 15 \overline{) 432} \\ \underline{30} \\ 132 \\ \underline{120} \\ 12 \\ \underline{12} \\ 0 \end{array}$
Mainly used to multiply any number by a 1-digit number.	Mainly used when multiplying numbers by a 2-digit number or more.	Mainly used to divide any number by a 1-digit number.	Mainly used when dividing numbers by a 2-digit number or more.

CREATE YOUR OWN – why not roll a die to create your own number sentences to use one or more of the methods above.

TIMES TABLES – set yourself a challenge – can you record all of the number facts for a multiplication table in under 1 minute?

There may be some games you can play here - <https://www.topmarks.co.uk/maths-games/7-11-years/times-tables>

Over the year, children will use the methods above to solve multiplication and division problems. Children should be able to use known facts to solve different problems.

Thank you for your continued support.