

Headteacher: James Tibbles

Tel: 01227 830276

Email: [office@bridge.kent.sch.uk](mailto:office@bridge.kent.sch.uk)

Web: [www.bridge.kent.sch.uk](http://www.bridge.kent.sch.uk)

Bridge & Patricbourne CEP School  
Conyngam Lane  
Bridge, Canterbury  
Kent  
CT4 5JX



Friday 3<sup>rd</sup> December 2021

Dear Parents/Carers,

As we're approaching Christmas, things are gearing up in school. The children are rehearsing their nativity performances, decorations are going up and I'm been astounded by the amount of charitable giving I've seen around the school from Chocolate Oranges for the NHS to hamper contributions for the Salvation Army.

On behalf of these organisations, I would like to say a huge thank you and please keep the donations coming in over the next week.

### COVID-19 Update & Christmas

Cases remain very low in school with only one confirmed case all week. Please be assured that we will continue to do everything we can to protect the children in school as we would not want to ruin anyone's Christmas.

With this in mind, we have reluctantly made the decision that the Salvation Army concert could not go ahead and that the Christmas Bazaar will not take place. We are still hopeful that the PTA can still come in and run their gift shop with the children but the teachers will be running class parties instead next Friday afternoon so please feel free to deck your children out in their best (ugliest) Christmas jumpers! The younger children may even have a visit from someone special – assuming that his LFD test comes back negative!



In addition to this, we've also made the decision that we will not be holding Messy Church on Saturday 11<sup>th</sup> December.

### Year R, 1 and 2 Performances

Thank you everyone who completed the form requesting tickets. I will looking at these over the weekend and allocating these out on Monday. A reminder that each family will be allocated two tickets for one of the performances. Thank you for your patience.

Can I also remind all parents that we are asking all parents to take a Lateral Flow Test and not attend if they are displaying any symptoms; sanitising stations will also be available for parents. We will also be keeping records of all attendees for the purposes of Track & Trace.

### PTA Update

A few weeks ago, the PTA in conjunction with Emma Haynes ran a Quiz Night at the Night Yard which raised an incredible £2850 which was split equally between the PTA and the charity SUDC.

Sadly I wasn't able to attend this year but I heard that everyone had a really good time. Thank you for supporting this event and particular thanks go to Emma Haynes for organising this and our Quiz Master, Paul Steer.



### Change in Timings of the School Gate

Across the Autumn terms, we have kept the gates open a little longer, primarily to support Year R children getting in and out in good time but, from January, we will be reverting to our standard 'pre-pandemic' timings.

In the morning, **the gate will open at 8:40am** as normal and will now close **at 8:50am**. At home-time, the gate will be opened at 3:10pm for Year R parents to give them a 'head-start' and other parents can collect their children from 3.15pm. Please note that at 3.25pm the gates will close again and any children will need to be collected from the school office – this is to allow staff to have a quick break before meetings or clubs start.

Please help support our staff and your children by being prompt. It can be very distressing for a child to be left waiting in the office or to come into the classroom late when everyone has already started the lesson.

### Staffing News

Some rather sad news now I'm afraid to say. At the end of this term, two very valued members of our staff will be leaving us for pastures new.

Mrs McLean has been at Bridge School now for just over two years and has brought a wealth of knowledge and expertise in SEN, particularly in the area of supporting children with dyslexic tendencies. She has been working across Bridge and Littlebourne Schools but has made the decision to focus her work in just one school. I know that Littlebourne are very lucky to have her as their SENCO and she will be a real asset to the school.

I was also very saddened to hear this week that Mr Moon is moving on. Many of you will know Mr Moon from being on the school gate as well as all the work he does around the school premise and site to ensure that everything is the best that it can be for our children. He does assure me that he won't be leaving us completely as he still has children at the school and is also quite keen to remain a supportive member of the PTA. He will also be a huge loss to the school and his (mostly) smiling presence will be missed.

Please join me in wishing them both the very best.

With best wishes,



James Tibbles

Upcoming Events

All dates and events can be found on our school calendar.



You are also able to 'subscribe' to the calendar (there is a link underneath the calendar) which means that you can have the school calendar on your phone or tablet and any updates will automatically appear on your device!

<b>Monday 6<sup>th</sup> December</b>	
<b>Tuesday 7<sup>th</sup> December</b>	
<b>Wednesday 8<sup>th</sup> December</b>	
<b>Thursday 9<sup>th</sup> December</b>	
<b>Friday 10<sup>th</sup> December</b>	Class Parties

<b>Monday 13<sup>th</sup> December</b>	9.15am 1CS Assembly	2.30pm: Year 2 Nativity (1) 2.45pm: 1LA Assembly	
<b>Tuesday 14<sup>th</sup> December</b>	9.15am: Year R Nativity (1) 9.15am: Year 2 Nativity (2)	2.30pm: Year R Nativity (2)	6pm: Gulbenkian Christmas Concert
<b>Wednesday 15<sup>th</sup> December</b>	9.15am Year R Nativity (3)	Christingle Services in Church	
<b>Thursday 16<sup>th</sup> December</b>	9.15am 1LA Assembly	2.45pm 1CS Assembly	
<b>Friday 17<sup>th</sup> December</b> LAST DAY OF TERM			

<b>Monday 3<sup>rd</sup> January</b> <i>Bank Holiday</i>	
<b>Tuesday 4<sup>th</sup> January</b>	
<b>Wednesday 5<sup>th</sup> January</b>	
<b>Thursday 6<sup>th</sup> January</b>	
<b>Friday 7<sup>th</sup> January</b>	

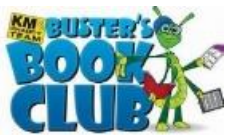
<b>Monday 10<sup>th</sup> January</b>	
<b>Tuesday 11<sup>th</sup> January</b>	
<b>Wednesday 12<sup>th</sup> January</b>	Year 6 Trip to Matilda
<b>Thursday 13<sup>th</sup> January</b>	Young Voices
<b>Friday 14<sup>th</sup> January</b>	

Celebration

Star Pupils

Each Friday, we celebrate children who have impressed the adults in school either through their learning or demonstrating one of our Christian values.

- |  |  |
|--|--|
| <ul style="list-style-type: none"> <li>☆ <b>Betsy (1CS)</b> for an excellent attitude towards her learning. <i>Mrs M Smith</i></li> <li>☆ <b>Arbin R (1LA)</b> for his excellent attitude to his learning and always trying his best. <i>Miss Andrews</i></li> <li>☆ <b>Otis J (2FP)</b> for showing resilience and service when writing the whole evaluation for his groups model house. <i>Mrs Franks</i></li> <li>☆ <b>Lily G (2GD)</b> for a very well-constructed and thought out bridge during our DT topic. She confidently led a group during the evaluation part of the lesson. <i>Mrs Dennett</i></li> <li>☆ <b>Luca J (3JA)</b> for his excellent effort with his dividing on a number line in maths this week! <i>Mr Ablett</i></li> <li>☆ <b>Efi B (3SA)</b> for trusting in her own abilities and making a super effort this week. <i>Mrs Amelia</i></li> <li>☆ <b>Scarlett A (4JH)</b> for always being kind to others and always trying her best in class. <i>Mr Harris</i></li> </ul> | <ul style="list-style-type: none"> <li>☆ <b>Joe P (4JH)</b> for producing a superb piece of independent work in History. <i>Mrs Corral</i></li> <li>☆ <b>Hanna L (4ST)</b> for commitment to her own learning, particularly reading at home and also for being a kind, generous and supportive member of our class. <i>Mrs Tomsett</i></li> <li>☆ <b>Ellie A (5HA)</b> for her efforts in all of her learning and reading lately. Well done Ellie. Keep going! <i>Miss Allison</i></li> <li>☆ <b>Charlie R (5JS)</b> for taking control of his own learning journey, following the advice of his teachers and for being resilient with his maths this week. <i>Miss J Smith</i></li> <li>☆ <b>Megan B (6NA)</b> for excellent descriptive writing in her Blitz newspaper report. <i>Mr Taylor</i></li> <li>☆ <b>Scarlett S (6JP)</b> for her excellent defending and reading of the game during Hockey. You are always in the right place at the right time! Well done! <i>Mr Perfect</i></li> </ul> |
|--|--|

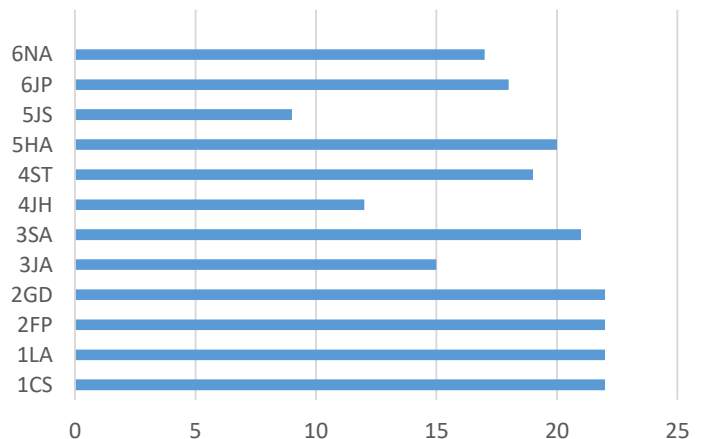


Buster Book Club

This week, as part of our Buster Book Club, we are celebrating not just the total number of minutes read but also the number of children who have read in each class.

Incredibly we have four class in joint first place this week with all of them have had 22 children reading at least three times this week.

**Well done to 2GD, 2FP, 1LA and 1CS!**



News and Blogs

Highlights from the School Life section on the website.

[READ ALL BLOGS >](#)



**Prototype chairs - Year 6 | Bridge & Patixbourne CEP School**

Our focus on Design Technology continues this term and the Year 6 chair project progresses well. This week, the pupils have been making prototypes of their chairs from paper straws, paper and masking tape. These models give the children an opportunity to test their designs, structures, and dimensions. Even though these are only paper, many of them already hold Action man's weight (although, he will be heavier next week).



**Mayan Day | Bridge & Patixbourne CEP School**

Thank you to everyone in year 4 for participating so enthusiastically in our Mayan Day. The outfits were brilliant. We all enjoyed being explorers and discovering new things about the Maya. We learnt about a few of the many gods including the sun god and the maize god and why they were so important.



**DT - Year 3 weaving | Bridge & Patixbourne CEP School**

The Year three topic this term is Ancient Egypt. Within Design Technology, pupils are designing and making necklaces (inspired by Ancient Egyptian art) for a summer 'collection' – Egyptian style is back in fashion after 5000 years!

This is a DT textiles unit, so the main feature on the necklaces will be rectangular shaped pieces of weaving. Pupils have also taken time to explore tassel and paper bead making - all three techniques will be featured on their necklaces.



**Tennis Triumph | Bridge & Patixbourne CEP School**

Iris in Year 4 has been entering tennis tournaments recently and came 2nd last weekend at a tournament in Brighton. This weekend, however, her training and determination paid off and she gained an even better result!

*"On Saturday 20th November, I played a tennis tournament in Maidstone and I came 1<sup>st</sup>! It was a mixed competition (boys and girls playing each other) and I really enjoyed myself. I'm also really proud of myself, because I was the youngest child in the tournament."*

Very well done, Iris!



**DT - Year 1 | Bridge & Patrixbourne CEP School**

This term we are focusing on Design Technology. Year one regularly practises motor skills within lessons with Mrs Cork and Mrs Andrews; in preparation for this project they have been practising using scissors and a hole punch.

Within their DT lessons they are getting into the Christmas spirit by designing moving Christmas cards to give to their families.

---



**The Sadie Bristow Foundation on its snowsport events - Snowsport England**

The Sadie Bristow Foundation is introducing school pupils to snowsport every month, with 40 children experiencing the sport at Snozone, Milton Keynes in October alone.

Children and parents from Bridge and Patrixbourne Primary, Canterbury enjoyed the latest trip to the slope, with the charity looking to open their next trips to another two schools.

Email [info@sadiebristowfoundatin.org.uk](mailto:info@sadiebristowfoundatin.org.uk) if you want to get involved or know more.