

Carroty Wood

MONDAY 21ST OCTOBER TO WEDNESDAY 23RD OCTOBER 2024

Staff

Miss Allison

Mr Ablett

Mrs Radford

Mrs McInnes

Mrs Saunders

Mr Taylor

Mrs Brooks

Where

CARROTY WOOD
Higham Lane,
Tonbridge, Kent
TN11 9QX



Accommodation - Rooming

Most rooms sleep between two and five children; one room of 10.

Single-sex rooms

Bedding is provided

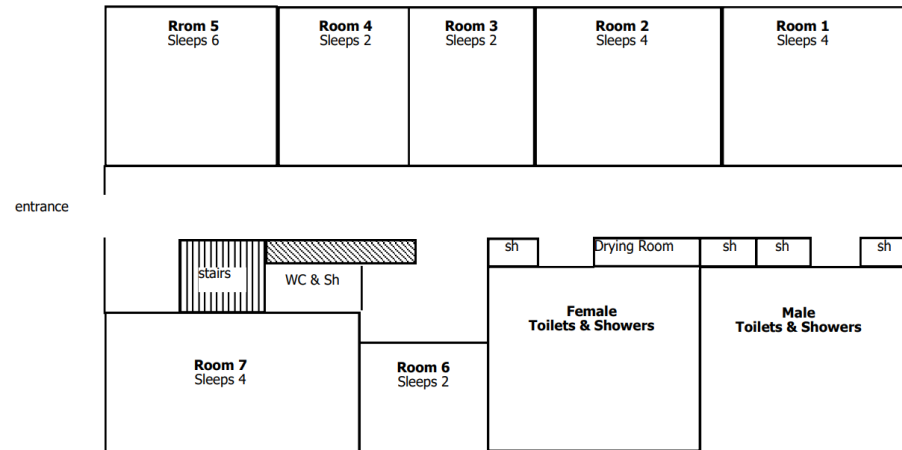
Separate toilets and showers (bring your own towel)

Children will be able to nominate up to 4 friends they would like to share a room with.

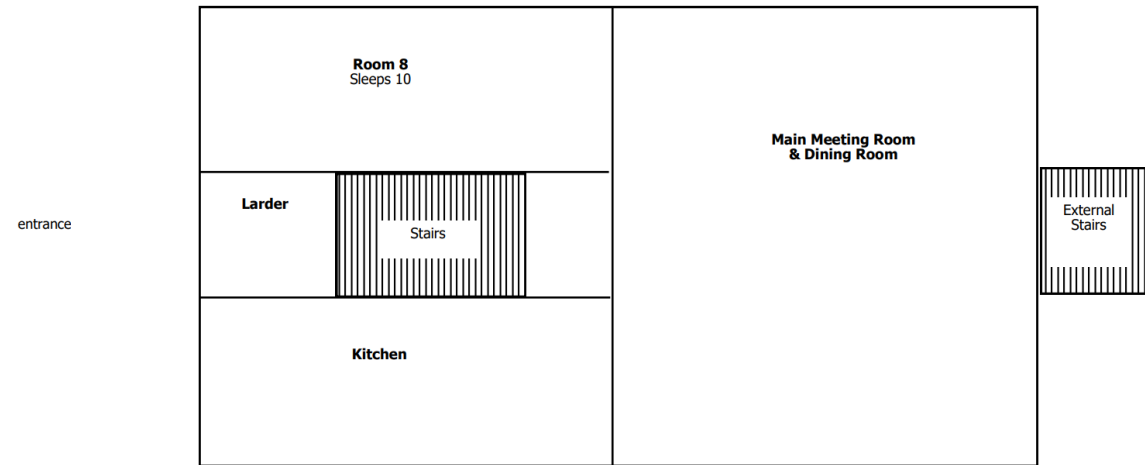
They will be in a room and an activity group with at least 1 friend on their list

Arranging rooms is a very lengthy process that we take great care over

Accommodation – Chestnut Lodge

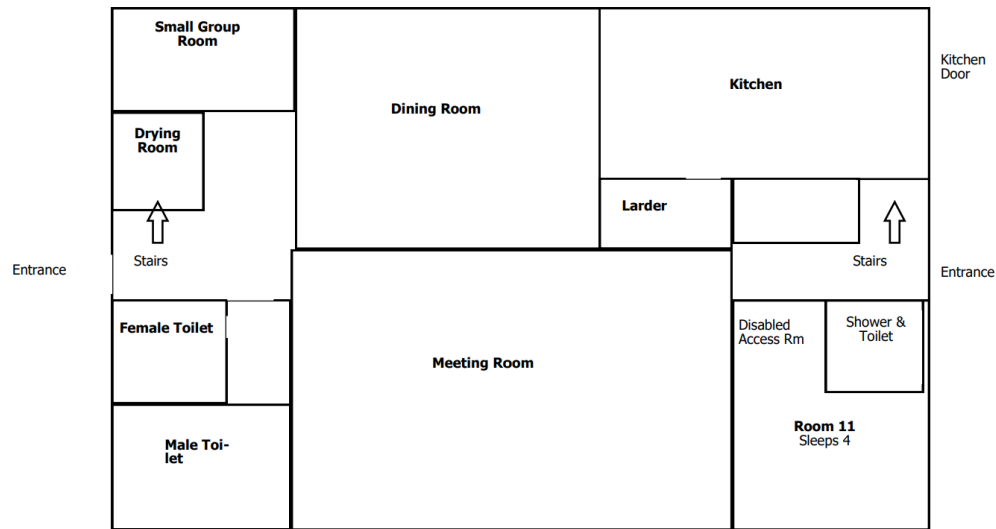


Chestnut Loft Ground Floor

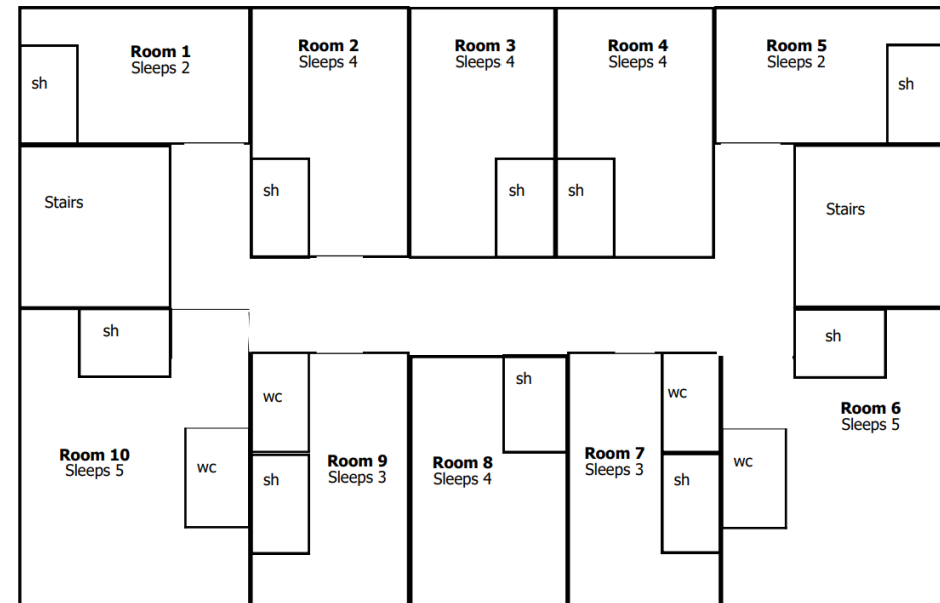


Chestnut Loft First Floor

Accommodation – Woodland Lodge



Woodland Lodge Ground Floor



Woodland Lodge First Floor

Activities

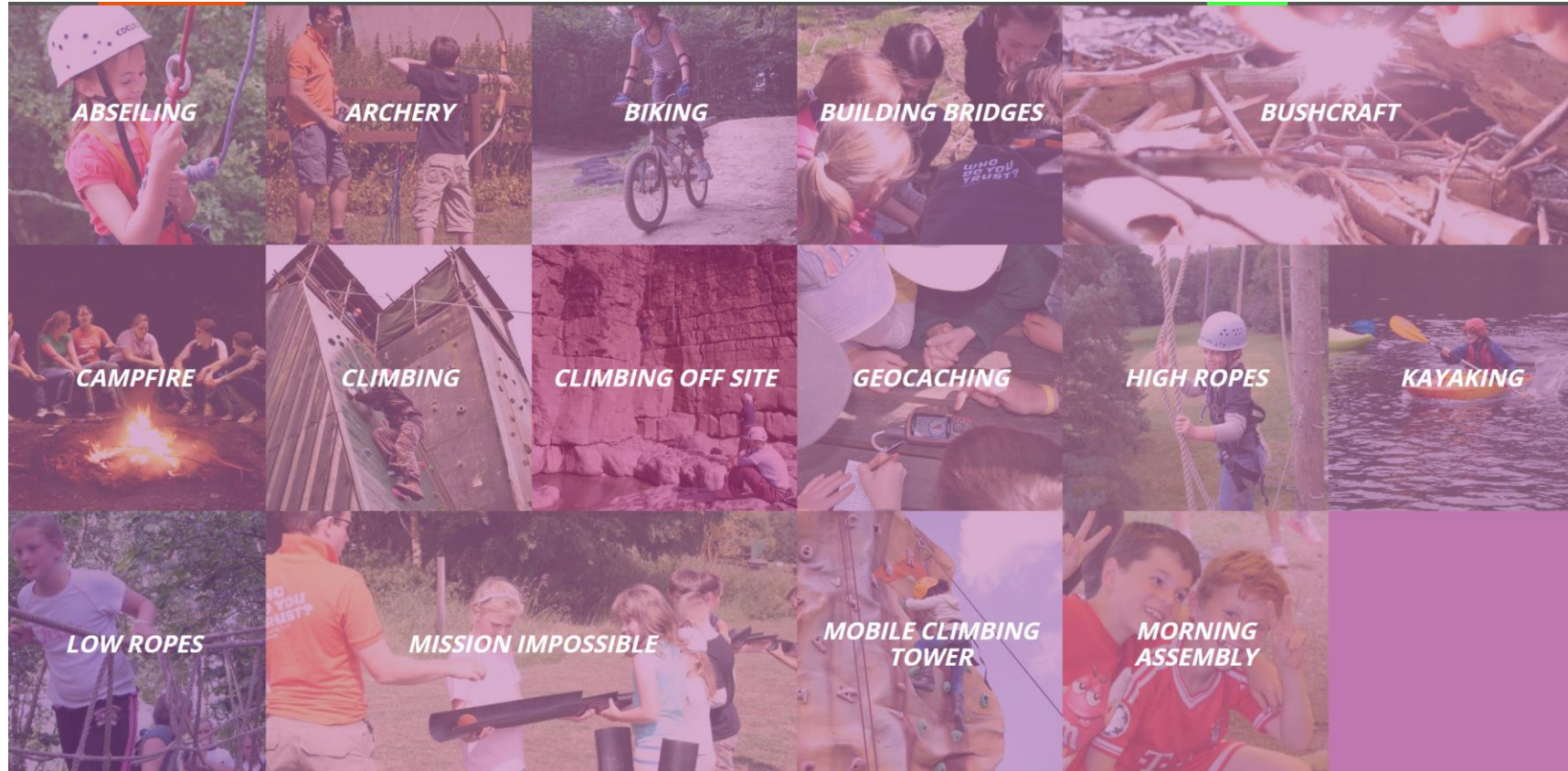
Activities selected to promote communication and teamwork as well as the skills needed to overcome challenges.

All instructors are fully qualified

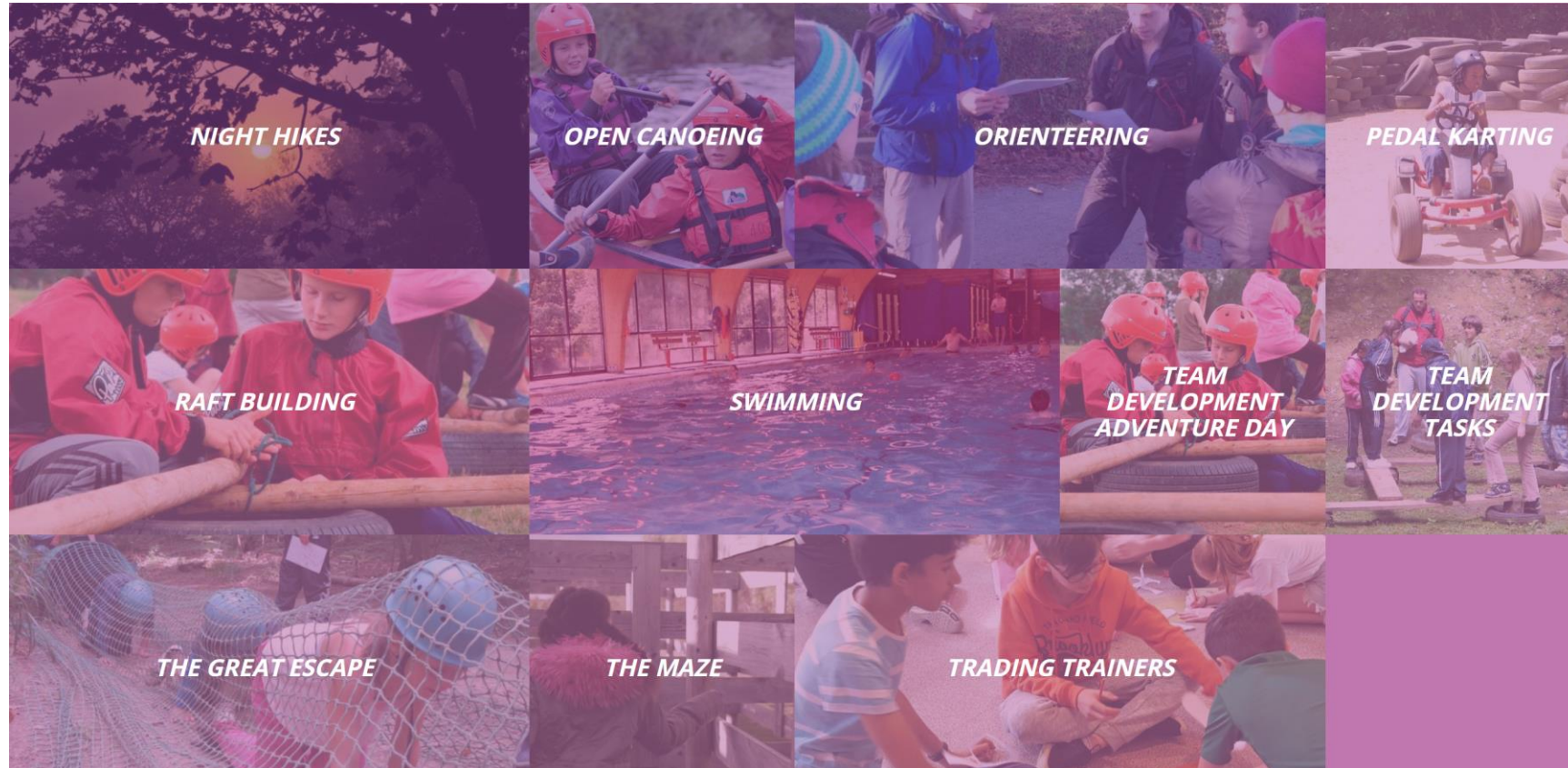
Work in groups/as a team with others they may not usually work with

Encouraged, not forced

Activities



Activities



Activities – Provisional Draft Schedule

Mon 21-Oct-2024

14:00	CW Archery	15:45	1h45m	Group 3 - Max 16
14:00	CW Climbing	15:45	1h45m	Group 4 - Max 16
14:00	CW Maze	15:00	1h	Group 1 - Max 16
14:00	CW Mission Impossible	15:00	1h	Group 2 - Max 16
16:00	CW Archery	17:45	1h45m	Group 1 - Max 16
16:00	CW Climbing	17:45	1h45m	Group 2 - Max 16
16:00	CW Maze	17:00	1h	Group 3 - Max 16
16:00	CW Mission Impossible	17:00	1h	Group 4 - Max 16
19:00	CW Night Hike	20:45	1h45m	Groups 1 and 2; Max 32

Tue 22-Oct-2024

09:15	CW Bushcraft Shelters	11:00	1h45m	Group 4 - Max 16
09:15	CW Climbing	11:00	1h45m	Group 3 - Max 16
09:15	CW Maze	10:15	1h	Group 2 - Max 16
09:15	CW Mission Impossible	10:15	1h	Group 1 - Max 16
11:15	CW Archery	13:00	1h45m	Group 4 - Max 16
11:15	CW Bushcraft Shelters	13:00	1h45m	Group 3 - Max 16
11:15	CW High Ropes 1	13:00	1h45m	Group 1 - Max 16
11:15	CW High Ropes 2	13:00	1h45m	Group 2 - Max 16
14:00	CW Archery	15:45	1h45m	Group 2 - Max 16
14:00	CW Bushcraft Shelters	15:45	1h45m	Group 1 - Max 16
14:00	CW Maze	15:00	1h	Group 4 - Max 16
14:00	CW Mission Impossible	15:00	1h	Group 3 - Max 16
16:00	CW Bushcraft Shelters	17:45	1h45m	Group 2 - Max 16
16:00	CW Climbing	17:45	1h45m	Group 1 - Max 16
16:00	CW High Ropes 1	17:45	1h45m	Group 3 - Max 16
16:00	CW High Ropes 2	17:45	1h45m	Group 4 - Max 16
19:00	CW Night Hike	20:45	1h45m	Groups 3 and 4 - Max 32

Food

We are going self-catering!

Breakfast will be options of cereal and toast

Lunch will be sandwiches/rolls/wraps, snack bars, fruit, crisps etc. Children will make their own lunch after breakfast.

Hot dinner will be provided

Kit, Money & Valuables

Send them with inexpensive clothes as there is a fair chance they may get ruined!

Children can bring swimming kit (we don't know if we'll be able to use the swimming pool yet – if we can, it will be in groups)

No valuable/electronics should be brought.

There is no gift shop!

Medication

Please encourage your child to take any travel sickness medication before arrival at school on Monday 21st October.

All medicines should be handed to Mrs Brooks on Monday morning.

Medicines must be in containers clearly labelled with the child's name, the type of medicine and the dosage instructions.

Behaviour & Conduct

Exceptional behaviour is expected at all times and it is imperative in ensuring that we all have a happy and safe time.

The expectations we have for the children's behaviour and conduct will be made very clear to the children before we leave.

We and the staff are able to remove children from activities if their behaviour is putting others at risk.

Serious incidents of misbehaviour may warrant contacting parents to arrange for their child to be collected from the premises and withdrawn from the trip.

Questions?
