

KS3 THEORY KNOWLEDGE

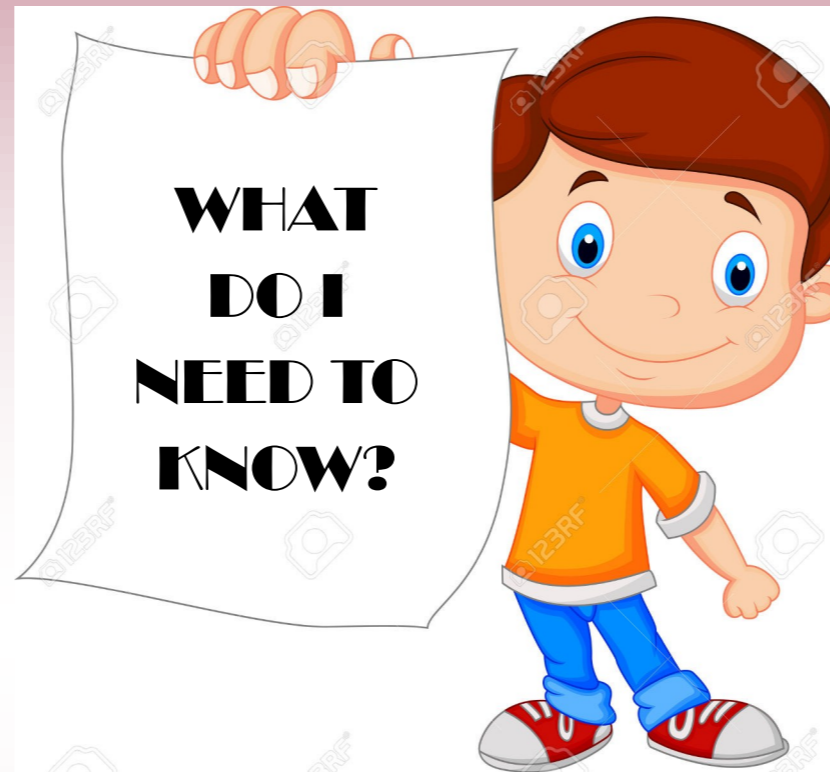
THE STRUCTURE AND FUNCTION OF THE SKELETAL SYSTEM

YEAR 7

LOCATION OF THE MAJOR BONES

HINGE JOINTS AND THEIR LOCATIONS

BALL AND SOCKET JOINTS AND THEIR LOCATIONS



YEAR 9

ALL YEAR 8 KNOWLEDGE PLUS THE ROLE OF:

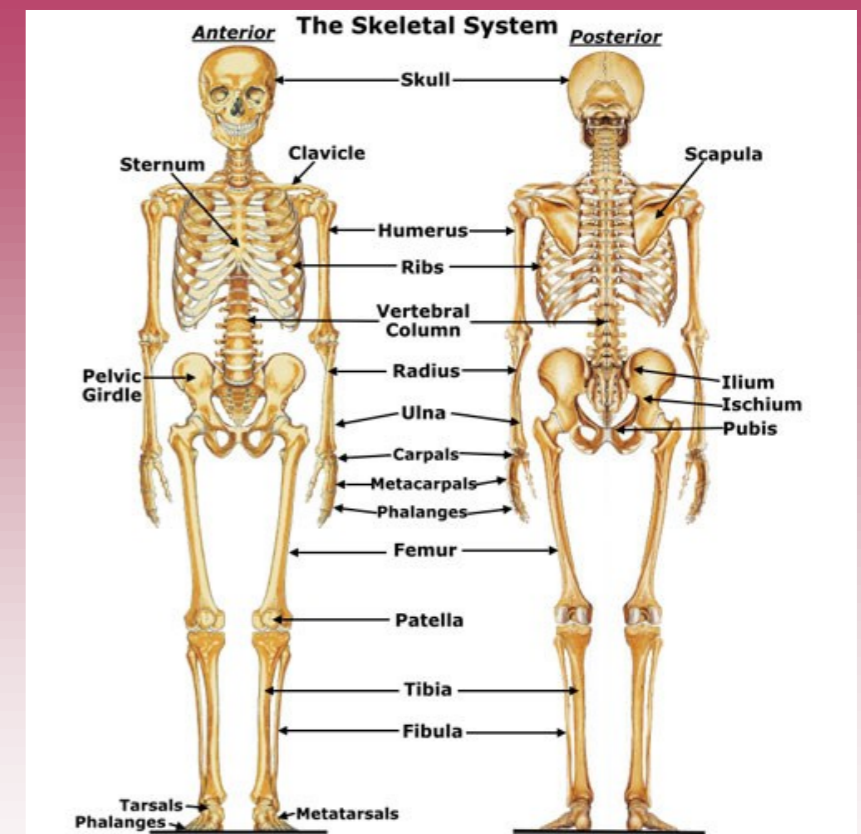
LIGAMENTS / CARTILAGE / TENDONS

PLUS KNOWLEDGE OF THE TERMS:

FLEXION AND EXTENSION

ABDUCTION AND ADDUCTION

ROTATION AND CIRCUMDUCTION



YEAR 8

ALL YEAR 7 KNOWLEDGE PLUS FUNCTIONS OF THE SKELETON

- PROVIDES SHAPE & SUPPORT
- ALLOWS MOVEMENT
- PROTECTS INTERNAL ORGANS
- PRODUCES RED BLOOD CELLS
- STORES MINERALS (CALCIUM)
- PROVIDES POSTURE



SKELETAL SYSTEM