

Prior PHSCE Links:

- **Key Stage 2** – In primary school you will have learnt about same-sex parents and how some adults have same-sex relationships.
- **Tutor Time 2022/2023** – This year during tutor time we have learnt about the different areas of LGBTQ+

DO NOW

In pairs or small groups you have 3 minutes to make a list of all the things you each have in common. For example; 'we go to the same school'.

Rule: you can't list similar body parts for example; 'we all have a brain'.

Discussion:

- How easy was it to discover something in common with every team member?
- To what extent were you alike?
- What are the ways in which we are all different?
- How can differences and similarities bring us together?



LGBTQ+

Gender Identity



Learning outcomes:

- To understand what we mean by LGBTQ+
- To understand what we mean when we talk about gender identity
- To learn about key terms
- To learn about how to be an ally
- RE Link: To discuss religious views of LGBTQ+

Think, pair, share



- What do you already know about the LGBTQ+ community?
- Do you know what the letters stand for?

How do we define the LGBTQ+ community?

The LGBTQ+ community is generally representative of and consists of those who do not identify as a part of the mainstream straight or cisgender population. It stands for: Lesbian, Gay, Bisexual, Transgender, Queer (and/or questioning) +.

Now watch this video, can you add anymore information to what you know about the LGBTQ+ community?



Look at the key words below. Can you match them up with the correct definition?



1. Lesbian

2. Gay

3. Bisexual

4. Transgender

5. Queer

A. someone who can be attracted to more than one gender (e.g. men and women)

B. a person whose gender identity is different from the sex they were assigned at birth

C. a man who is attracted to men OR a woman who is attracted to women

D. a woman who is attracted to other women

E. an umbrella term used to describe a sexual orientation, gender identity or gender expression that does not conform to dominant societal norms.

L

Lesbian:

a woman who is attracted to other women

G

Gay:

a man who is attracted to men OR a woman who is attracted to women

B

Bisexual:

someone who can be attracted to more than one gender (e.g. men and women)

T

Transgender:

a person whose gender identity is different from the sex they were assigned at birth

Q

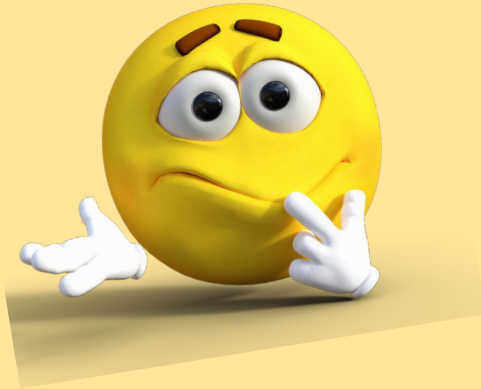
Queer:

An umbrella term used to describe a sexual orientation, gender identity or gender expression that does not conform to dominant societal norms.

The choices game



Over the next few slides you will see some pictures of things you may like. On your whiteboard you have to make a choice, imagine you could only have one of those things for the rest of your life, which would you choose? You must choose one!





Cats or dogs?



TV or music?



Which chocolate bar?

CHOCOLATE DIGESTIVES



SHORTBREAD



CHOCOLATE FINGERS



JAFFA CAKES



CHOCOLATE HOB NOBS



Which biscuit?

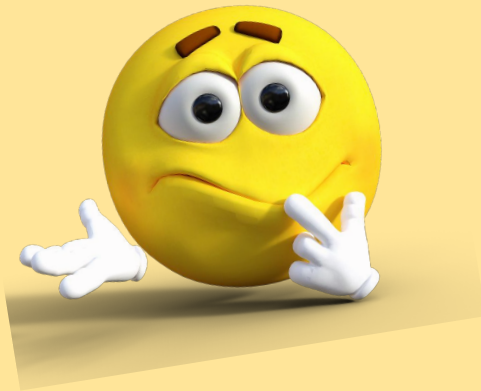


Which bag of crisps?



Which bag of sweets?

Some of these choices were very difficult to make. If it is this difficult to choose between mundane things, imagine if this was a choice about who you are. What if you felt like none, or felt like more than one? The gender that someone feels that they are inside does not always match their body and this is very real. Being trans is not a choice. Not everybody has to make a decision or be labelled.



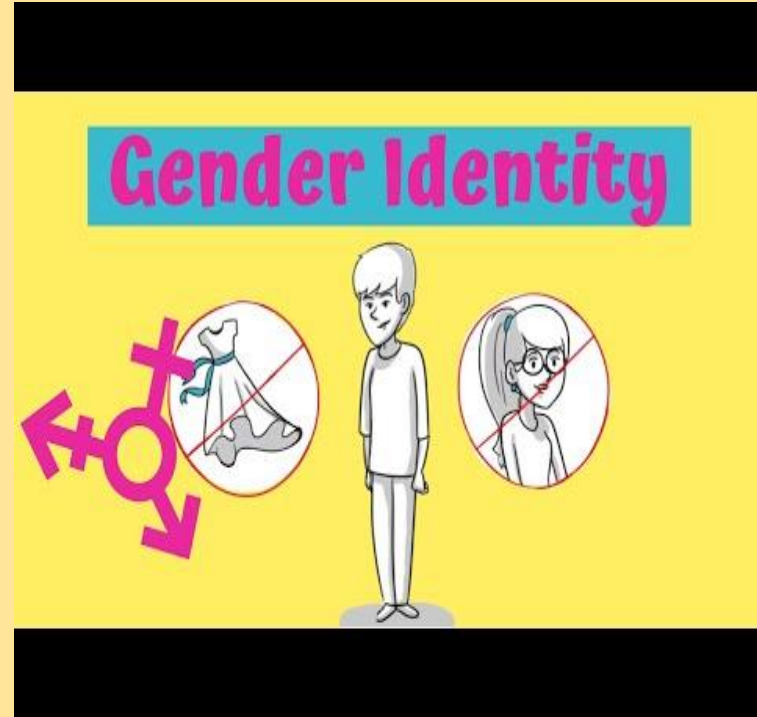
Gender Identity

Sometimes our gender matches the gender we were assigned at birth and sometimes it doesn't. When our gender identity does NOT match this is what is called **Trans** or **Transgender**.

There are lots of different identities that people identify with. Some examples are:

- Trans
- Transgender
- Transman or Transwoman
- Non-Binary

You should never feel pressured to label your gender identity.



Gender Identity Quiz

You will now see some statements about gender identity. On your whiteboards decide if each statement is true or false.



1. **“Gender is assigned at birth, depending on biological characteristics”**

True: However, some people do not feel that they identify with their biological gender

Gender Identity Quiz



2. “Trans is a term to describe someone’s sexual orientation”

False: Trans is an umbrella term used to describe how someone may identify in terms of their gender.

Gender Identity Quiz

3. “Being Trans is a choice”

False: It is not a choice. The gender that someone feels that they are inside does not always match their body.



Gender Identity Quiz



4. “Some people identify as being more than one gender and move between them”

True: This is called being ‘gender fluid’

Gender Identity Quiz



5. “All trans people want to physically change their bodies”

False: Some trans people do go through surgery to change their bodies to reflect the gender in which they identify. However, many trans people choose not to do this and instead choose to present themselves in their identified gender in other, non-permanent ways, such as clothing, hairstyles, etc.

Gender Identity



What is trans?

Someone who identifies as a different gender to their assigned birth sex.

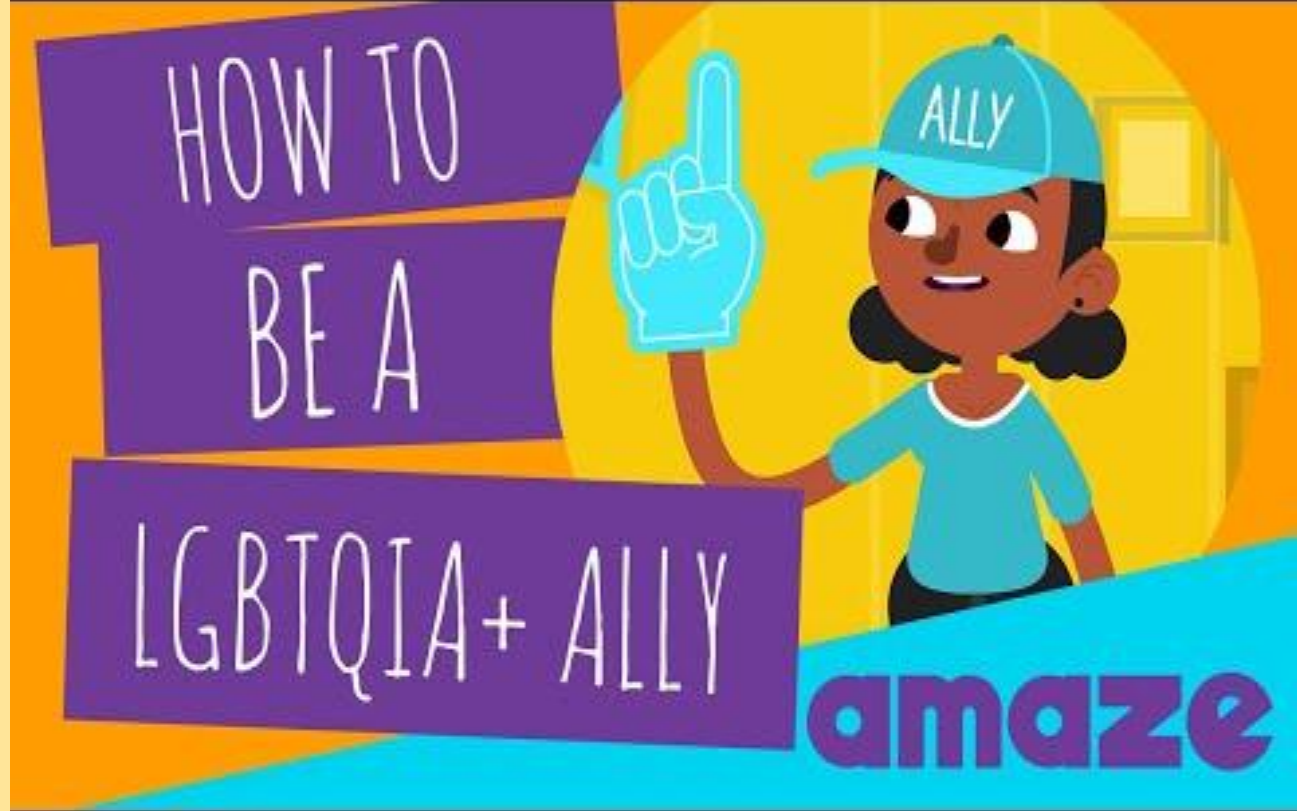
- Dressing up or pretending to be the opposite gender
- A sexuality
- A mental illness
- A phase
- Being born both genders



What trans is NOT....





What can you do?

Watch the video and make notes on your whiteboards about what it means to be an ally...



What can you do?







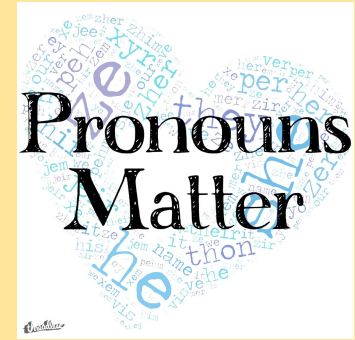
-  Be open-minded
-  Not use homophobic, biphobic or transphobic (HBT) language yourself
-  Think about what you say!
-  Don't laugh along with others



What can you do?



-  Don't judge or make assumptions about people's gender because of what they like to do/ how they look
-  Respect people's privacy
-  Use the correct pronouns
-  **Report bullying!**



Think, pair, share



What are religious views of LGBTQ+ (Christianity and Islam)?

Most Christian churches hold the position that you should **love the sinner, but hate the sin**. This is generally interpreted to mean that Christians should show love and compassion to homosexuals, but that homosexuals should not engage in sexual activity. This is because most churches teach that sex should only happen within marriage between a man and a woman

Many Muslims believe that homosexuality is not permissible in Islam as they believe it to be against the will of Allah, as inferred from verses such as this one: “And as for the two of you men who are guilty of lewdness, punish them both. And if they repent and improve, then let them be. Lo! Allah is merciful” (Qur’an 4:16).

Discussion Point

Read the quotation below, what do you think? Discuss in pairs or small groups and write ideas on your whiteboard

“The bible and Qur’an are both products of their time. We shouldn’t apply their attitudes towards homosexuality literally”.



Burscough



Academy

Who are we?

- Burscough Pride Academy is an LGBTQ+ club
- We are open to **ALL** pupils
- We focus on discussion, fundraising, art and other things



Friday
lunchtimes
Room 6

For more information see Mrs Dawson