



Burscough Village Primary School

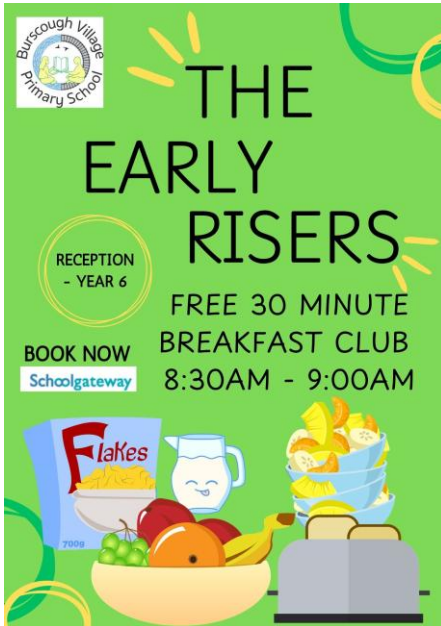
Colburne Close, Burscough, Ormskirk, Lancashire L40 4LB

Tel: 01704 895 403 Fax: 01704 895 946

Headteacher: Mrs A Yates

Dear Parents/Carers,

You may recall before February half term; we wrote you to advise that Burscough Village had been selected to become one of the first schools to trial a new 30-minute FREE breakfast club for all children from reception – Year 6.



Firstly, we would like to thank you for your patience whilst we have been planning and preparing for the official launch on Tuesday 22nd April 2025. Following consultation with the children on the pupil council and house captains have decided to call the club, "The Early Risers!"

Early Risers will run 8:30am – 9:00am and be available for all children (Rec – Year 6). To ensure we cater and staff for the correct number of children, sessions will need to be pre booked using School Gateway.

We will continue to offer a paid Breakfast Club for all children from 7:45am to 8:30am. Starting from 22nd April, we are reducing the cost for Reception to Year 6 pupils, by passing on the funding we receive from the DfE. The new price for Breakfast Club will be £3.40 per session.

We have been working closely with the LCC catering department and Mrs Howard to ensure that we can offer the children a balanced, healthy breakfast with the funding that is being provided from the DfE.

The menu will be developed over the coming months, and we will have themed weeks for the children to try different foods.

Breakfast Club Trial – Tuesday 1st April – Pre Book

We are holding a whole-school trial morning for our Breakfast Club on Tuesday 1st April. If you would like your child to attend at 8:30am, please book via School Gateway and select their breakfast item. On the morning of the trial, you need to drop your child off at the main school entrance at 8:30am and they will go straight into the hall for breakfast. The purpose of this trial is to check that everything runs smoothly. After the session, we will review how it went and confirm the final arrangements for the official launch on Tuesday 22nd April 2025.

Our aim is to ensure that all the children access the breakfast efficiently and with this in mind we have invested in new dining room tables which will be delivered next week.

We are excited to be one of just 11 schools in Lancashire chosen to take part in this new scheme! As we work to find the best approach, there may be some teething problems at the start, and we might need to make a few adjustments along the way. However, please be assured that we are committed to making this a success for all our families.

Yours sincerely,

Mrs A Yates,
Headteacher



Burscough Village Primary School

Colburne Close, Burscough, Ormskirk, Lancashire L40 4LB

Tel: 01704 895 403 Fax: 01704 895 946

Headteacher: Mrs A Yates

The Early Risers FAQs

1. What time does The Early Risers start and finish?

Breakfast Club runs from 8:30am to 9:00am.

2. How much does the Early Risers cost?

This is a free club for all Reception to Year 6 pupils funded by the Dfe. All children will have access to a FREE breakfast.

3. Why are Nursery children not included?

The Dfe are not funding the free 30-minute session for nursery children. All nursery children are still eligible to attend breakfast club at a cost of £4.00

4. How do I book a place for my child?

Bookings can be made via School Gateway. If your child is booked on and paid for breakfast club there will be no need to book them as onto the Early Risers.

5. What if my child has dietary requirements?

We will cater for all dietary requirements known to school; please ensure that you book in advance.

6. Can my child attend on a drop-in basis?

Whilst we are trialling the scheme we ask that all children are booked in advance, bookings need to be before 2:30pm the day before. You do not need to come every day; children can access on as many or as little days as you like.

7. Who supervises the Breakfast Club?

Our experienced school support staff, will be running the sessions.

8. What activities are available during Breakfast Club?

We envisage the Early Risers session working in three parts; however, we will be trialling different activities. Children can enjoy a relaxed environment in hall whilst they are having their breakfast, followed by outside games, or quieter activities before going to the classroom for 8:50am to prepare to start school.

9. What if my child is late?

To ensure children have enough time for breakfast, we ask that they arrive by 8:30 am, if your child arrives after this time, they will need to wait for the wait for school gate to open at 8:45am.

10. Drop off and Parking

We're working with the local authorities to find parking solutions near the school. We hope that the staggered start times will help ease traffic. Since this is a busy time for our staff, **please do not use the school car park for drop-offs**. This could delay staff from getting into school and attending to the children.

