



Safeguarding in education

Burton Agnes CE Primary School

**Child Protection Guidance & Procedures for
Staff**

Revised Sept 2021

Safeguarding contact list September 2021

Burton Agnes CE Primary School Child Protection & Safeguarding

Advice and contact list September 2021

(For notice board display. This list must be made available to all staff)

Role / Agency	Name & role	Contact details
School Designated Safeguarding Lead/ Child Protection Coordinator	Helen Jameson Headteacher	Burton Agnes CE Primary School burtonagnes.head.primary@eastriding.gov.uk 01262 490320
Deputy DSL/Child Protection Coordinator	Jo Kemp Sendco	Burton Agnes CE Primary School Burtonagnes.senco@eastriding.gov.uk 01262 490320
Child Protection/ Safeguarding Governor	Julie Warcup	Julie.warcup@btinternet.com
Chair of Governors	Andrea Lister	Andrea.lister@btinternet.com
Looked After Children Designated Teacher	Jo Kemp	Burton Agnes CE Primary School Burtonagnes.senco@eastriding.gov.uk 01262 490320
E Safety Coordinator	Helen Jameson	Burton Agnes CE Primary School burtonagnes.head.primary@eastriding.gov.uk 01262 490320
Safeguarding and Partnership Hub	CP initial referral Support & Advice: Intensive & Specialist Safeguarding support 1. Urgent C P concerns 2. Consultation with Social Worker	Mon to Thu 8:30am – 5:00pm Fri 8:30am – 4:30pm 01482-395500 Request for service forms to: safeguardingchildrenshub@eastriding.gov.uk
Children's Emergency Duty Team	Urgent CP concerns outside of office hours where a child is at risk of significant harm.	01482 393939
Early Help Locality Hub	Early Help Additional Support for children & family's initial consultation	Consultation 01482 391700 Request for Service form to the Hub nearest to where the child lives chp.bridlington@eastriding.gov.uk chp.wolds@eastriding.gov.uk

Local ER Children Safeguarding Team		01482-395470 Bridlington
Local ER Children Safeguarding Team Manager	Jenny Smith (Manager)	j.smith@eastriding.gcsx.gov.uk 01482 395470
Education Safeguarding Manager (ERYC)	TBA General strategic and operational School Safeguarding & CP advice	TBA safeguardingineducation@eastriding.gov.uk
ERYC LADO	Referral of possible allegations against staff & volunteers.	LADO@eastriding.gov.uk
School critical incident, bomb threats etc & Educational Visits Emergencies (not Child Protection)	24-hour Guidance & support	01482- 392999
Humberside Police	ER Protecting Vulnerable People Unit	01482 220809
Humberside Police	Hate Crime / incident reporting	101 https://www.reportingcrime.uk/HPhatecrime/
East Riding Safeguarding Children Partnership	General strategic and operational Safeguarding & CP advice and multiagency training	https://www.erscp.co.uk/ 01482-396994 erscp.enquiries@eastriding.gov.uk
ER Safeguarding Children Partnership Training	Training Admin & Information	erscp.training@eastriding.gov.uk
Hull North Yorks North Lincs North East Lincs	Children's Social Care	01482- 448879 EDT 01482- 300304 01609- 780780 EDT 01609- 780780 01724- 296500 EDT 01724- 296500 01472- 326292 EDT 01472- 326292
Prevent Referral	Humberside Police ERY LA	101 prevent@humberside.pnn.police.uk prevent@eastriding.gov.uk

Child Protection Procedures - Staff reference guidance

This guidance provides a summary of:

- Your roles and responsibilities in Child Protection,
- How to respond if you have concerns about the safety and welfare of a pupil and
- What the responsibilities of the Designated Safeguarding Lead (DSL) are.
- Advice and expectations for safe and appropriate working

It should be read in conjunction with the following that school will have made available to you. If at any time you are uncertain about any safeguarding or CP matters or the content of guidance or policies the DSL or other Senior or Pastoral staff should be contacted for advice.

- **The school Strategic Child Protection and Safeguarding policy** - which outlines the overall Child Protection and Safeguarding arrangements in more detail
- **Statutory Guidance Keeping Children Safe in Education 2021 (KCSiE) Part 1 information for all School & College staff**, which details your responsibilities in Child Protection and Safeguarding. It provides detailed information about, and indicators of the various forms of abuse, neglect and other specific safeguarding issues that you need to be aware of such as Child exploitation.
- **The Staff Code of conduct** – which is designed to support the maintenance of a safe and secure learning and working environment
- **The current and ongoing school safeguarding and Health & Safety arrangements for Covid 19**

Other useful sources of information that are available on the staff safeguarding board

- **What to do if you are worried a child is being abused 2015**
- **KCSiE 2021** the full document (includes management of safeguarding and allegations against staff guidance)
- **The School Safeguarding whistle blowing policy guidance & allegation guidance**

Child Protection Concerns

KCSiE makes it clear that:

'Schools and colleges and their staff are an important part of the wider safeguarding system for children.

*Safeguarding and promoting the welfare of children is **everyone's** responsibility. **Everyone** who comes into contact with children and their families has a role to play and no single practitioner can have a full picture of a child's needs and circumstances. If children and families are to receive the right help at the right time, **everyone** who comes into contact with them has a role to play in identifying concerns, sharing information and taking prompt action.*

School and college staff are particularly important as they are in a position to identify concerns early, provide help for children, and prevent concerns from escalating.

All staff should be prepared to identify children who may benefit from early help.¹ Early help means providing support as soon as a problem emerges at any point in a child's life, from the foundation years through to the teenage years'

*'All staff should ensure that they remain aware of the signs of possible abuse or neglect and maintain an attitude that **'IT COULD HAPPEN HERE'**.*

Awareness of indicators of Abuse & Neglect

- All staff should be aware of the possible indicators or signs and symptoms of PHYSICAL, EMOTIONAL, SEXUAL ABUSE and NEGLECT and these are described in KCSiE and *'What to do if you are worried a child is being abused'* and in your online training module.

In addition to these forms of abuse it is important to remain aware of other Child Protection and safeguarding concerns also outlined in these documents and training concerning a child who:

- is disabled and has specific additional needs;
- has special educational needs (whether or not they have a statutory Education, Health and Care Plan);
- is a young carer;
- is showing signs of being drawn in to anti-social or criminal behaviour, including gang involvement and association with organised crime groups;
- is frequently missing/goes missing from care or from home;
- is at risk of modern slavery, trafficking or exploitation;
- is at risk of being radicalised or exploited;
- is in a family circumstance presenting challenges for the child, such as drug and alcohol misuse, adult mental health issues and domestic abuse;
- may be a victim of Child Sexual and Criminal Exploitation (County Lines)
- is involved in inappropriate or sexualised behaviour such as 'Sexting'

Within school it is important to remain vigilant to the possibility of:

- Pupil on Pupil abuse and not dismiss such behaviour such as sexual touching or verbal abuse as 'part of growing up' or banter.
- That children with SEN, disability or challenging behaviour may make them more likely to be abused and that this may be masked by their additional needs, communication difficulty or challenging behaviour

Responding to concerns or disclosures

'Never do nothing – Do the simple things well'

Any member of staff who has a concern about a child's welfare must follow the internal referral process as outlined in the flow charts in this booklet without delay. Staff should ensure that concerns are recorded clearly on a 'Record of Concern' form and if appropriate 'Body Map (which are available from Mrs Jameson or the safeguarding notice board in the staffroom) and attached to this guidance) and passed to the DSL or other appropriate staff as indicated in the flow chart. You must not investigate but refer concerns as soon as possible and in potentially urgent or serious cases immediately.

At all times you must maintain the strictest confidentiality in respect of individual Child Protection matters.

Responding to - Disclosures

- React calmly, promise CONFIDENTIALITY **not** SECRECY
- Tell the child that they have done the right thing by telling you
- Avoid making comments or judgements about what is shared
- Keep responses short, simple, slow and gentle
- Do not stop a child or parent who is talking freely about what has happened
- Observe and listen but only ask open ended TED type questions if you need to clarify but this may be better left to the DSL or others
- Tell me what happened - Explain what you mean - Describe how it made you feel
- Tell the child or parent what will happen next

Feedback

You should expect to receive feedback following such internal referrals on a 'Need to Know' basis from the DSL. If this does not happen seek feedback.

The DSL or Dep DSL * will be available on site when the school is open to advise staff or respond to urgent Child Protection matters. The DSL and Deputy DSL are designated to take the lead responsibility for Child protection. This includes:

- Providing advice and support and information to staff as appropriate
- Liaising with the LA and other agencies including the involvement in Early Help Assessments and plans
- Obtaining, maintaining and transferring CP records for individual pupils and liaising with previous and receiving schools
- Ensuring the preparation of appropriate reports for and attendance at Case Conferences, Core Groups and other multi agency meetings
- Arranging appropriate induction and continuing training for all staff
- Liaising with the headteacher and Designated Safeguarding Governor
- Encouraging a culture in staff of listening to pupils and taking account of their wishes and feelings and supporting measures and plans put in place to support or protect them.

**A fuller outline of the Role of the DSL is at Annex B of KCSiE 2021*

Safe and Appropriate Working - Code of Conduct

KCSiE instructs all schools to issue a Code of Conduct to all staff. It is designed to;

- Help all staff establish safe and responsive learning environments which safeguard children
- Reduce the risk of adults being unjustly accused of unprofessional, inappropriate or abusive conduct
- Help staff to work safely to protect pupils and themselves
- Ensure that all staff are aware of what is regarded as appropriate or inappropriate conduct and practice
- Support the School managers in setting clear expectations for all staff

It is important that you **understand and follow** this Code to ensure that you protect yourself and to be aware that failure to do so could result in concerns about your behaviour and possible disciplinary action.

It is particularly important that you are aware that this code of conduct includes the requirement to follow the school 'Acceptable use policy' in respect of the use of internet and other IT applications. Also that behaviour out of school may call into question your suitability to work with children will need to be assessed by the school managers.

If there are any parts of this code or any issues arising from your work in this area you have concerns or queries about you should seek advice from the headteacher or another senior member of staff.

You may also wish to refer to the following documents which give more detailed guidance.

- Safer working Practice for Adults who work with Children & Young People in Education Settings (May 2019 Safer Recruitment Consortium)
- *School Safeguarding Whistle blowing guidance*
- *KCSiE 2010 part 4 Managing Allegations against teachers and other staff*
- Use of reasonable force Advice for headteachers, staff and governing bodies DfE July 2013

Concerns about the conduct of other members of staff or volunteers

The responsibility for Child Protection and Safeguarding includes a clear obligation to report concerns you have or disclosures made to you that indicate inappropriate or abusive behaviour by members of staff or volunteers. Such allegations should usually be referred to the Headteacher or if the allegation is about the headteacher to the Chair of Governors, a Senior Member of staff or the Local Authority Designated Officer.

If your concerns persist after you have referred Child Protection concerns or allegations as above you should raise these concerns with the recipient. If after these discussions there are concerns that the school has not acted appropriately to protect a child or to address inappropriate behaviour by a member of staff you should consider making a referral to the ER Safeguarding & Partnership Hub or in the case of allegations to the Local Authority Designated Officer.

See the following internal: Record of Concern Form & Body Map and Child Protection & Allegation Flowcharts (also for notice Board display)

Child Protection Record of Concern or Disclosure

Complete and hand **Helen Jameson DSL or JO Kemp DDSL** in urgent cases immediately or less urgent on the same day.

Pupils Name:	Class	Yr:
	DoB:	
Concern identified by:	Date:	Time:
Nature of Concern / details of disclosure / other relevant information. <u>Use Body Map if appropriate</u>		
Continue on reverse if needed		
Passed to:	Received by:	Date:

Action taken by DSL (or person receiving this form)

This form to be filed in pupils CP file and noted on CP chronology

**Child Protection Record of Concern - Body Map
(Attach to Record of Concern Form)**

Name of Child:							
----------------	--	--	--	--	--	--	--

Date of Birth				Date of completion:			
---------------	--	--	--	---------------------	--	--	--

Full Description of Injury

--	--	--	--	--	--	--	--

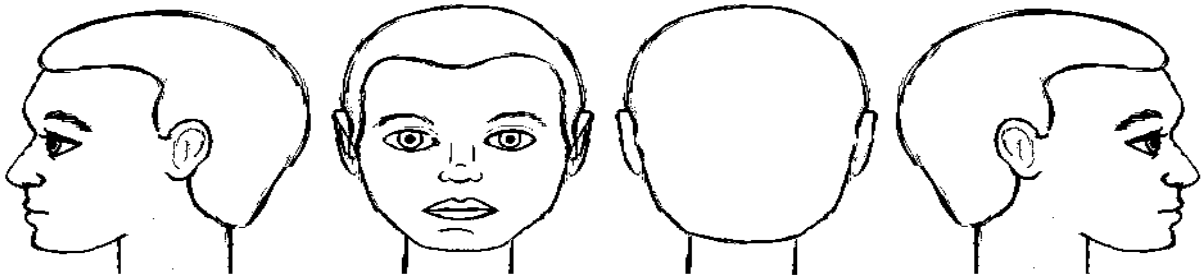
Signed:		Position:	

BODY MAP

SCHOOL: _____

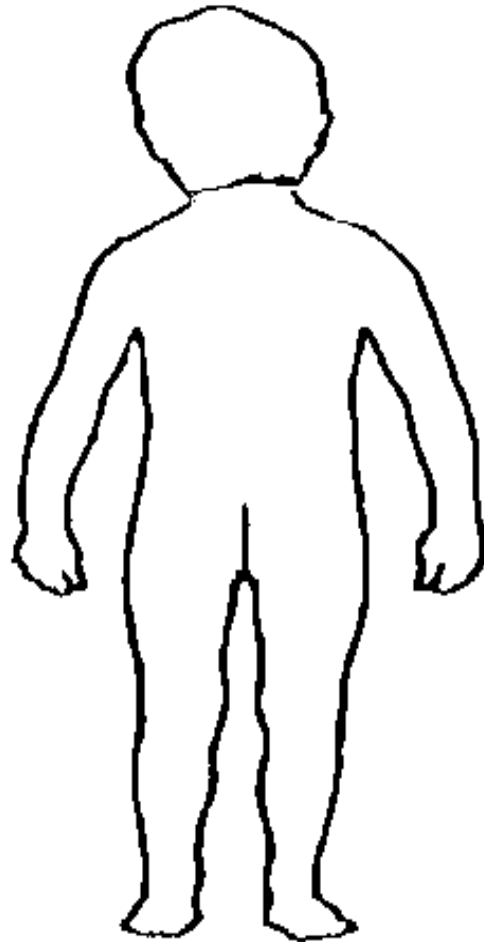
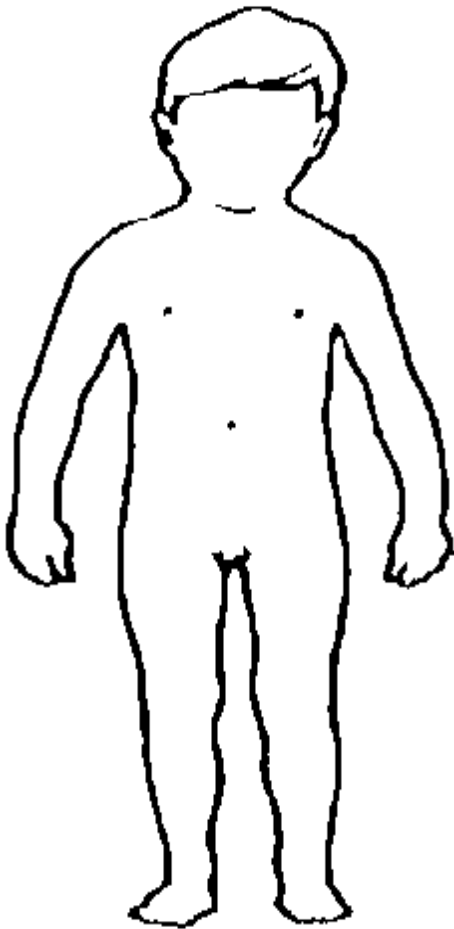
DATE: _____

CHILD INITIALS: _____



Left Side

Right Side



BODY MAP CONTINUED.



Left Hand

Right Hand

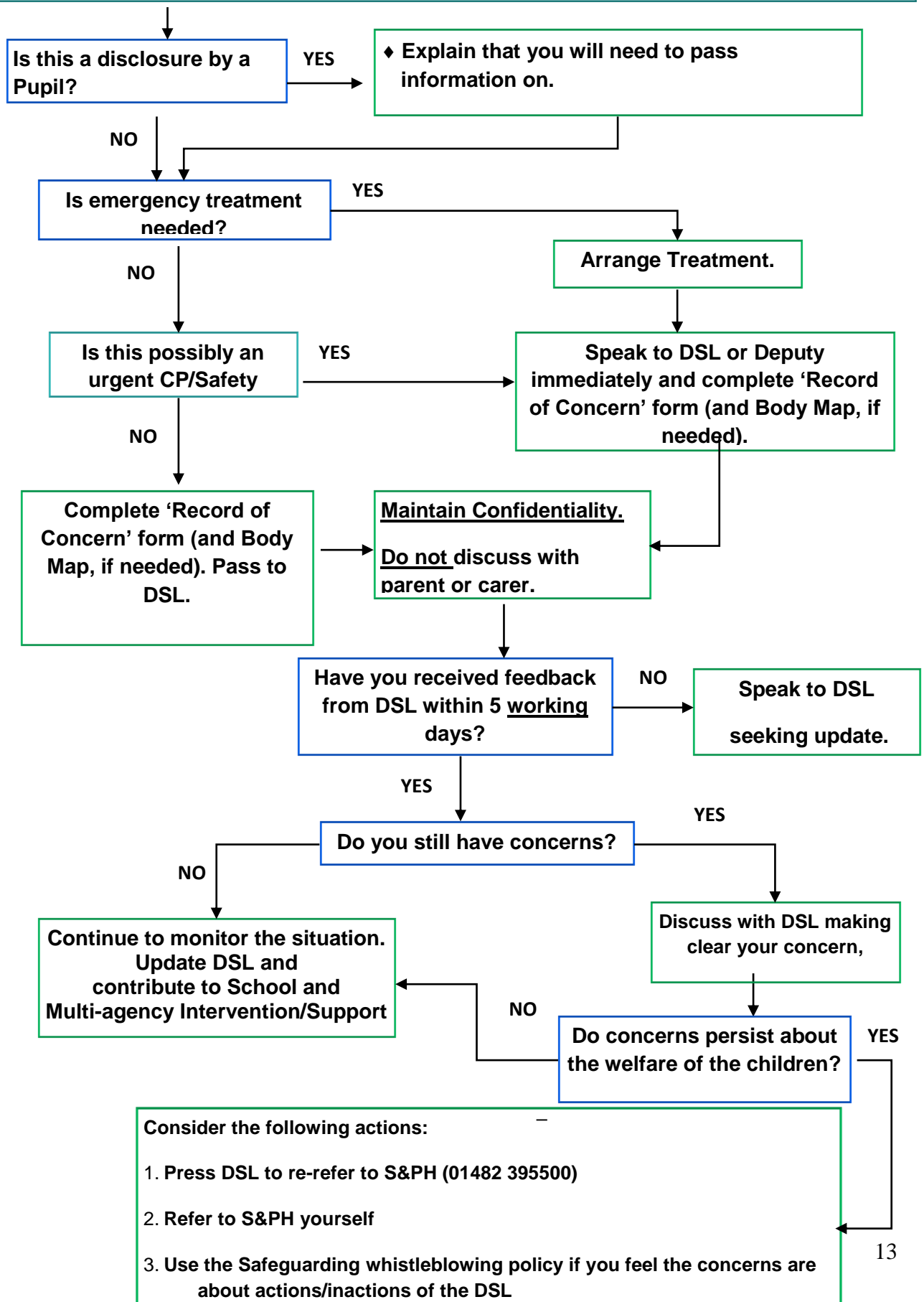


Left Foot

Right Foot

Child Protection Flowchart

Suspicion or disclosure that pupil has suffered or is at risk of suffering harm.
What you must do:



Allegation Flowchart

When you have a concern, disclosure or allegation about inappropriate or abusive behaviour towards children by a member of staff or volunteer.

What you must do:

Is there a suspicion or disclosure that a child has suffered or is at risk of suffering harm? If so also follow procedure on Flowchart 1

Is the allegation against the Head teacher?

YES

NO

Contact:

SLT, COG or Local Authority Designated Officer (LADO).
Maintain strict confidentiality.

Contact:

Head teacher or other SLT available.
Maintain strict confidentiality.

Have you received appropriate feedback? (from Head, SLT, LADO ?)

YES

NO

Seek meeting or request feedback

Do you still have concerns?

NO

YES

No further action required

Refer back to Head, CMC or SLT (or LADO) confidentially in writing if appropriate.

If concerns persist:

◆ Use the Safeguarding Whistleblowing policy to report your concerns.

Or

◆ Contact ERSCP LADO (01482 396999) or LADO@eastriding.gov.uk