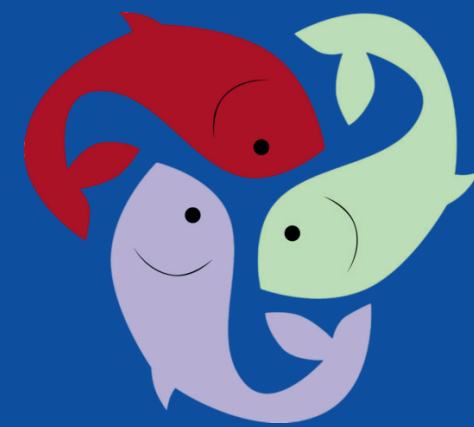


# BURTON BOROUGH SCHOOL PUPIL PREMIUM PLEDGE

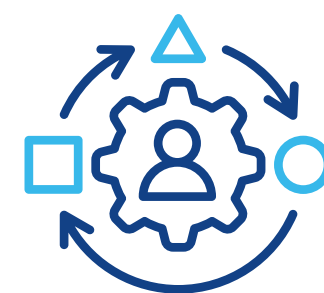


## High Quality Teaching- Every Lesson, Every Day

We deliver consistent, high-quality teaching by subject specialists through the LCT framework, using evidence - informed strategies from the science of learning to foster independent, resilient learners

## Adaptive Teaching Strategies

PP students receive targeted support in lessons through adaptive teaching strategies.



## Access to Targeted Academic Support

We provide extra support in literacy and numeracy for students who need it, including programmes like Lexonic LEAP and Lexonic ADVANCE, 1 to 1 and small group tuition. These interventions are based on regular assessments to create a graduated response model to ensure a bespoke pathway for each student.

## Revision Resources

All year 11 PP students will receive free revision materials and access to structured revision sessions, including morning revision breakfasts and a personalised revision timetable, during exams.



## Whole School Approach on Reading for Pleasure

Students have access to a welcoming library, use Sparx Reader to encourage regular, personalised reading, and study carefully curated texts in English lessons that introduce them to high quality, engaging literature. In addition, our Tutor Reading Programme ensures students are regularly read to and develop understanding through guided comprehension questions, fostering a positive reading culture and a lifelong love of reading.

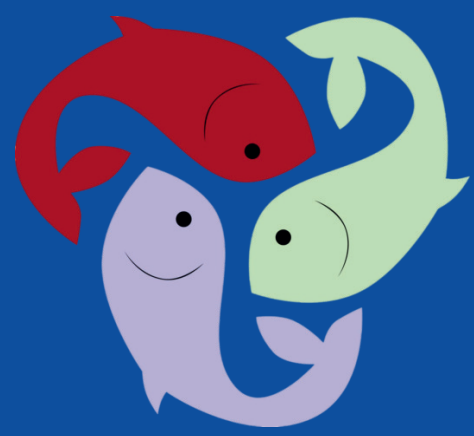
## Form Tutor First Approach

Every PP student has a dedicated form tutor who acts as their mentor and champion. Regular contact and support, helps to understand any barriers to learning, and ensure they have the help they need to succeed.

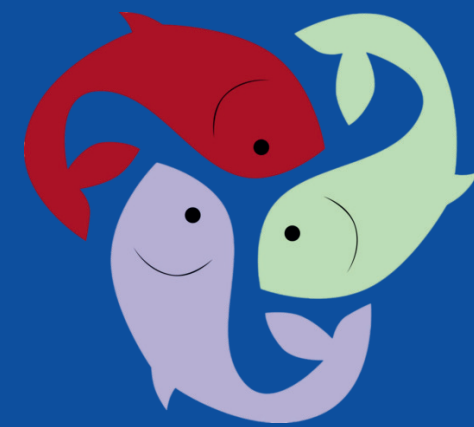


## Social and Emotional Support

Through the Emotional Health and Wellbeing pathway we are committed to ensuring that students receive the timely, proportionate and effective help needed to support through the challenges of being a young person growing up in an ever-changing society.



# BURTON BOROUGH SCHOOL PUPIL PREMIUM PLEDGE



## Funded one-to-one Music Lessons

Any PP student who is studying GCSE Music can receive fully funded one to one music lessons, in an instrument of their choice, to remove any financial barriers which may impact on their success.

## Student Voice

We make sure Pupil Premium students have regular opportunities to share their ideas and feel a strong sense of belonging through student voice surveys, leadership roles, action groups, House events and panels, their voices help shape improvements across the whole school.

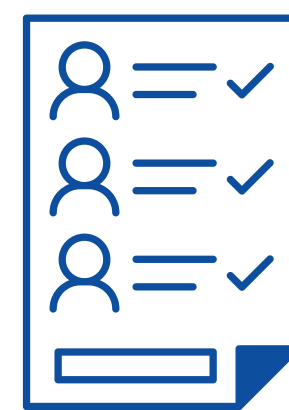


## Enrichment Opportunities

Every Pupil Premium student will take part in at least one trip or enrichment activity each year to develop cultural capital, with financial support available to make sure cost is never a barrier. In addition to this, they are encouraged to participate in extra curricular activities to develop confidence and resilience.

## Attendance

We want every child to attend school regularly and thrive. To help with this, we use proactive strategies and personalised support plans. Our two dedicated Family Liaison Officers work closely with students and families, offering help both in school and at home to remove any barriers to attendance.

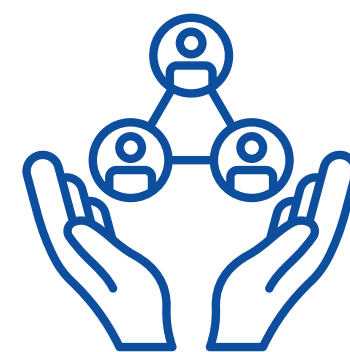


## Beyond The Uniform

We work with a charitable organisation, to provide mentoring for our PP students from Service families, through a project called "Beyond the Uniform"

## Parental Engagement and Support

Families will benefit from SEND coffee mornings, Year 7 afternoon teas, parents' evenings, and pathways events, with prioritised, targeted communication to support engagement and achievement of our PP students.



## Financial Support

We don't want financial barriers to stop any child from coming to school. If needed, we can help with uniform and essential equipment, so every student is ready to learn. We have strong links with our community services, and can provide food vouchers and food bank referrals for families in need.