

- **School Nurse** – Drop-in sessions on Thursday lunchtime or we can refer your child.
- **Crisis Support Telford** – Help with information on Foodbanks, Uniform, Telford Energy Advice and more – **01952 586646**.
- **Health Visitor**.
- **Family Hubs** – 01952 385465
- **Citizen's Advice** – The Guildhall, Newport – **01952 567193**.
- **Housing** – Telford and Wrekin Housing Solutions and Homelessness Advice – **01952 381925**.
- **Domestic Abuse Support** – Cranstoun in partnership with West Mercia Women's Aid – **0800 840 3747**.
- **PRISM** – Community Bereavement Support Service – **01952 872858**.
- **PODS (Parents Opening Doors)** – Charity for parents/carers of a young person with a disability or additional needs - **01952 458047**.
- **PEGS** - for families experiencing child to parent abuse. Website: www.pegssupport.co.uk.
- **Newport Drop In** - at The Hub Newport, Thursday's 10am-12noon.
 - Advice and signposting
 - Information on parenting/courses
 - Support and guidance around accessing local community activities and events

- **SENDIASS (SEND Information Advice and Support Service)**
 - Website: www.telfordsendiass.org.uk
 - Phone: 01952 457176
 - Email: info@iass.org.uk
- **Parenting Smart** - website: www.parentingsmart.place2be.org.uk

British Values at Burton Borough School

At Burton Borough School, we actively promote the core British Values to help students become respectful, responsible and active citizens.

1. Democracy

Students are empowered to effect change through democratic methods such as school council, leadership roles and regular feedback.

2. The Rule of Law

Our students learn why rules and laws matter — to keep us safe, treat everyone equally and promote justice.

3. Individual Liberty

We value the individual and their identity. We promote freedom of choice in a safe, supportive environment.

4. Mutual Respect

Respect is central to life at Burton Borough. We teach students to listen, value others' opinions, and treat everyone with kindness, in and out of the classroom.

5. Tolerance of Different Faiths and Beliefs

We celebrate diversity and educate students about different religions, cultures and worldviews.

Together with our school values, they help shape students into thoughtful, principled and active members of both our school and society.



Early Help Information for Parents and Carers

**Please contact us by telephone or email if you feel you need support.
We may also be able to offer
bilingual support.**

Burton Borough School
Audley Avenue
Newport
Shropshire
TF10 7DS

01952 951408

BURTONBOROUGH@LCT.EDUCATION



Early Help at Burton Borough

At **Burton Borough School** we understand that family life can sometimes be difficult and challenging. From time to time there may be situations where you feel you need more **help** and **support**. At these times we are able to offer you what is known as the **Early Help Offer**.

Providing early help to our **children** and **families**, means we can be more effective in preventing problems, from affecting children's ability to **thrive** and **learn**. Early help means providing support as soon as a concern emerges, at any point of a child's life.

You may want help due to concerns about your child's **mental health**, **anxiety**, **behaviour** or **additional needs**. Or you may have concerns about your housing situation or finances.

If you need support with your child's attendance or are facing any barriers in getting your child to school, we can help you. Please contact the school and ask to meet with our **Education Welfare Officer (EWO)**, **Family Liaison Officer (FLO)** or **Family Support Worker (FSM)**. They will be happy to meet with you at home or at school.

If your child has anxiety regarding school or any aspect of their wider life. We have three qualified **Emotional Literacy Support Assistants**, who work with individuals and small groups of children to support them with managing feelings and emotions - <https://www.elsanetwork.org/>.

We also have **well-being mentors** and a **Counsellor** who is highly experienced in their roles and deliver exceptional outcomes.

Do you need support with uniform?

Uniform is available from **Baker & Son**, Wellington and **Mary's Tots and Teens**, Newport. At **Burton Borough School** we have second hand uniform available to borrow. Please speak to a member of the **Pastoral Team**.

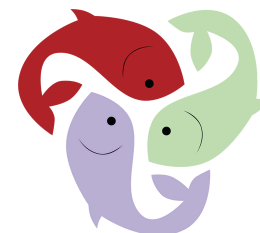
We have a **Hardship Fund** for our **Free School Meals** students. This fund may be able to support with uniform. Speak to your child's **Head of Year** or **Mr Darlington (Assistant Head)** for more information. Additionally, you may be able to get **winter coats** and **shoes**, please speak to the **Head of Year** for your child. If you can't find what you need, please speak to the office and they can point you in the right direction.

Financial Support

- **Pupil Premium** – Please contact school to see what help we can offer.
- **Free School Meals** – if you are on a low income and receive a qualifying benefit you may be able to claim Free School Meals (more information on Telford and Wrekin website).
- **Newport Food Bank**
- **Newport Food Save and Share** – Suggested donation of £2.50
- **CAP** (Christians against Poverty)
- **Thrive** – A group of organisations that work together to provide support (inspire2thrive.co.uk/access-support)
- **Woman's Aid** – Domestic Abuse – helpline@womensaid.org.uk
- **Citizens Advice** – Thursday's at the Guildhall, Newport. Telephone 01952 567193.

Ways we can help - Practical Support

- Speakout to report bullying concerns
- Family Liaison Officer
- Mental Health Lead
- 2 School Counsellors
- Pastoral Head of Year
- SEND Team
- ELSA Programme
- EWO
- Family Support Worker
- School Nurse
- Future Focus
- After school clubs
- Year 6 Transition Team
- Mental Health First Aider



The Ways We Listen

- Offering a helping hand
- Maintain a supportive relationship
- Friendly advice
- Judgement free listening ear

Young Carers

Our Heads of Year can refer Young Carers to Telford and Wrekin Young Carers or alternatively you can call them on **01952 240209**.

Sign Posting to Other Agencies

- **Family Connect** – Telephone **01952 385385** Monday – Friday 9am – 5pm or familyconnect@telford.gov.uk