

Ambitious. Proud. Caring.

Transition Evening

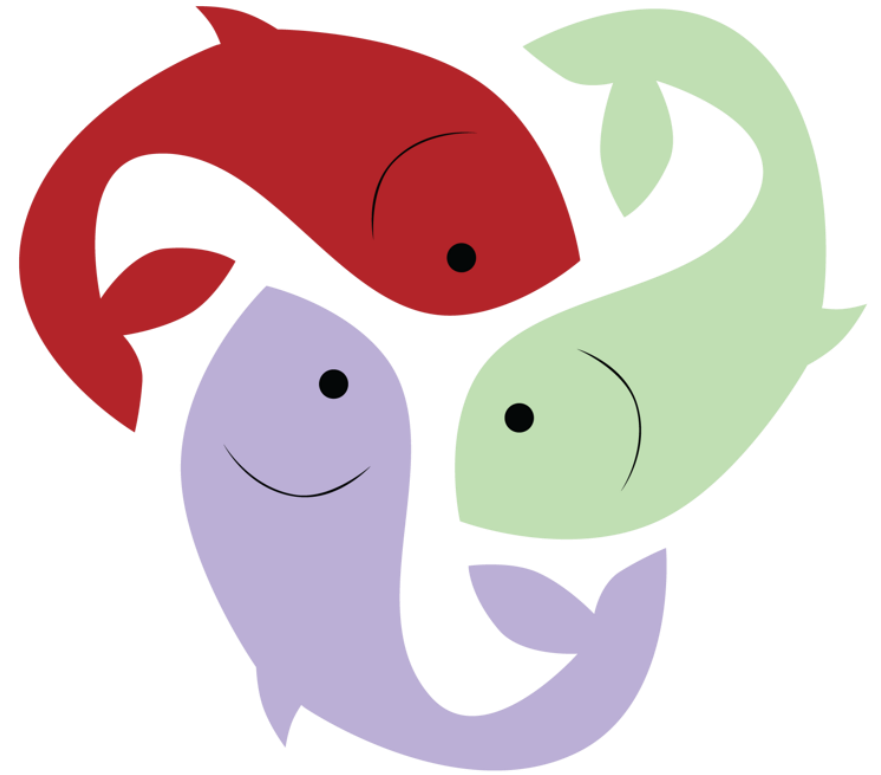
Tuesday 8th July



Transition Evening

This evening you will have an introduction to:

- Key members of staff
- Our school values
- Our teaching and learning team
- Our pastoral team
- Safeguarding at BBS
- Our SEND & Inclusion Team
- Personal development at BBS
- Our BBS Offer



Welcome to BBS!



Mrs Bedford
Principal

"Welcome to **BBS**, a school where **ambition** drives us, **pride** unites us, and **care** shapes our journey **together**."

Ambitious Proud Caring

Our School Values



Ambitious

We strive for **excellence**, give our **very best**, and **embrace every opportunity** to **learn, grow, and elevate** our work.

Proud

We take **pride** in everything we do, lead with **integrity**, and make **meaningful choices** that reflect our **commitment to excellence** each day.

Caring

We **care** for one another, lead with **kindness**, and foster a **safe, respectful environment** where everyone feels **valued and supported**.

High Expectations



We have high expectations because:

- Every **student** matters.
- **Learning** matters.
- Everyone deserves an environment where they can **achieve** their best.
- They **challenge** us to **flourish** in all our endeavours.



Quality of Education

We believe that every child has the potential to **succeed**, and we strive to create an environment that **nurtures** and supports this **potential**.

At BBS, we place a strong emphasis on **learning** and getting an **exceptional education**. We believe that **education** is the **key** to unlocking a **world of opportunities** and **possibilities** for our students.

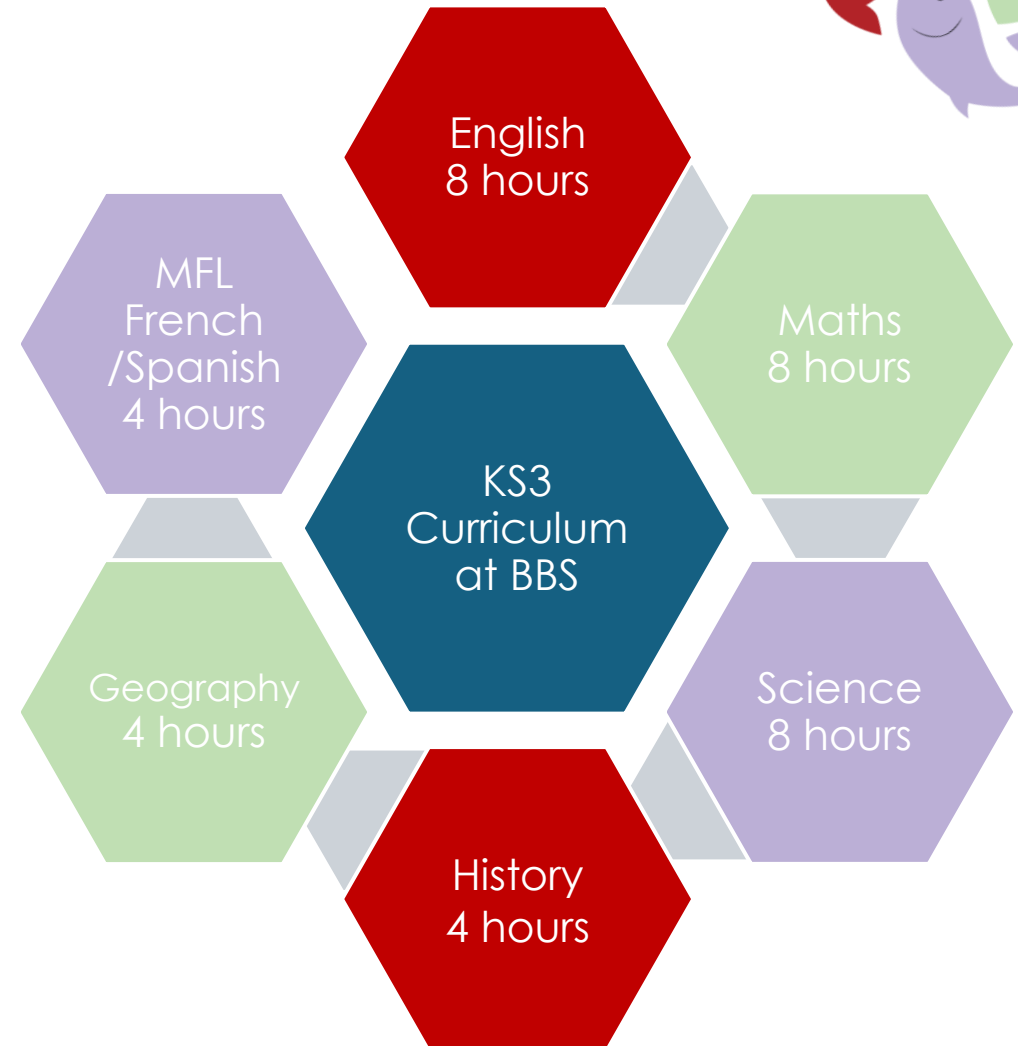


Key Stage 3 Education



At **Key Stage 3** our students are offered a **breadth of subjects** to allow them to explore their **academic strengths** and **talents**.

We offer an **ambitious** and **inclusive education** where our students are encouraged to **succeed** and reach their **full potential**.

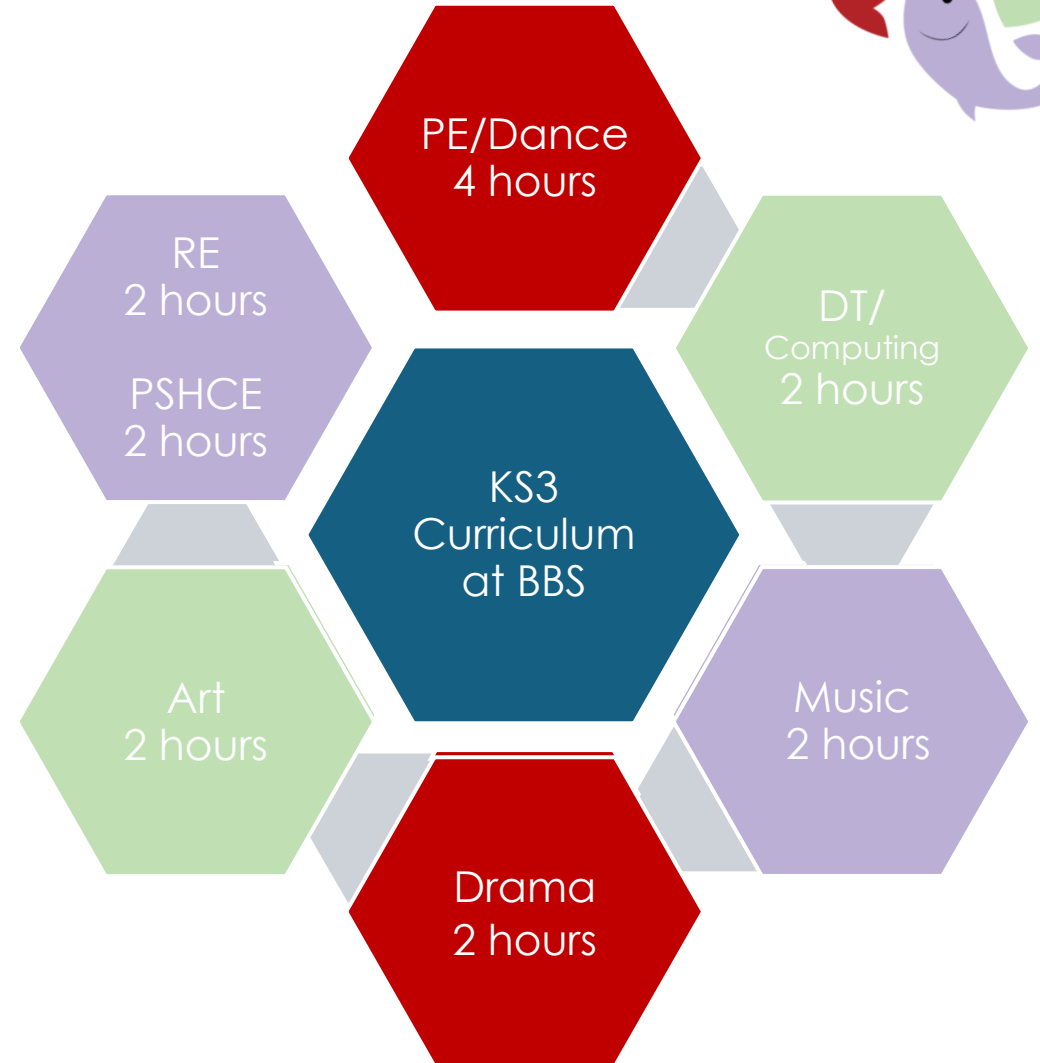


Key Stage 3 Education



At **Key Stage 3** our students are offered a **breadth of subjects** to allow them to explore their **academic strengths** and **talents**.

We offer an **ambitious** and **inclusive education** where our students are encouraged to **succeed** and reach their **full potential**.



Stationery



Pen



Pencil



Compass



Ruler



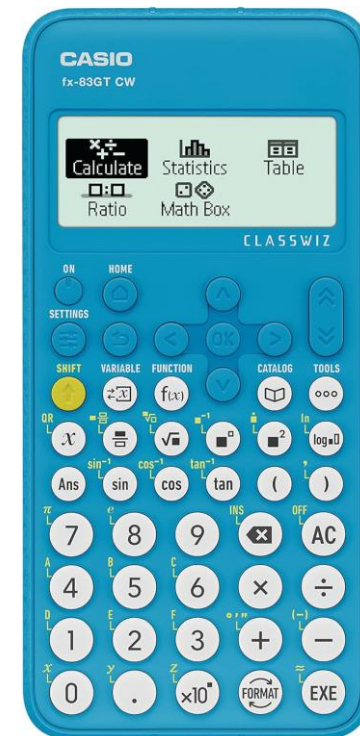
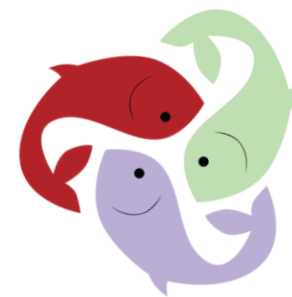
Protractor



Red Pen

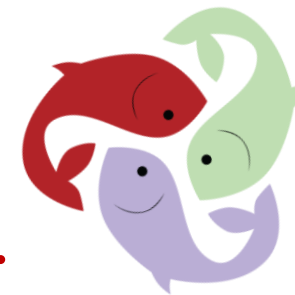


Eraser



Scientific calculator
(Casio FX-83GTCW Scientific Calculator)

Homework at BBS



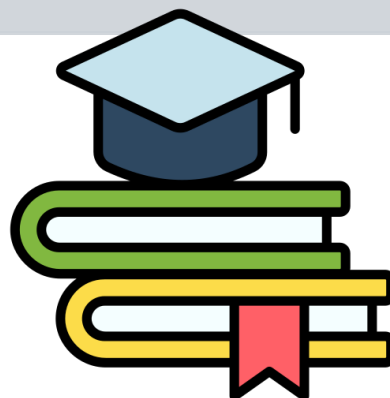
Homework at BBS focusses on the development of long-term knowledge.

1 Hour Per Week

Maths
English
Science
French/Spanish
RE-Table Talk Topic

1 Piece Per Term

History
Geography




Extra-Curricular Clubs

PE
Music
Drama
Art
Computing

Homework at BBS

We currently use these online platforms for homework:



 **Sparx**
Maths

English



 **SENECA**



 **Sparx**
Science

MFL



 **Language****nut**

Behaviour & Standards at BBS



AMBITIOUS

PROUD

CARING

Behaviour for Learning

At BBS, **learning** is at the heart of what we do. We ensure the promotion of **positive behaviour** within the classroom and around the school site.

This **philosophy** is built on a **culture** in which our students are **recognised** and **rewarded** for their acts of **caring** within our community and their **ambition** in the classroom, so that they feel **proud** of themselves.

Culture Points **Positive Notes** **Specialist Awards**

Uniform

Proud to represent **ourselves**, our **year group**, our **house** and our **school community**.

Mobile Phones

Switched off and put away.

Uniform

Uniform can be purchased from:

- **Mary's Tots & Teens Newport**
- **Bakers & Sons Wellington**

Please visit our website for more:
www.burtonborough.org.uk

Ties

- We have informed you of your child's house allocation: **Chetwynd**, **Hawkstone** and **Aqualate**.
- Please remember this when buying a tie (either **red**, **green**, and **purple**).



Uniform Policy

- **Jewellery** - **one watch** and **stud earrings only**. Medical/religious bangles are an exception.
- **Make up** - subtle make up only (light and natural). We will politely ask that excessive make up is removed and parents/carers will be notified. This does include fake eye lashes.
- **Nails** - nude colours only for nail varnish and false nails are not permitted.
- **Hair** - **natural styles** and **colours only**.

If you have any questions or concerns about any of these areas, please speak to **Mrs. Edge**, **Mrs. Heins** or **Mrs Champion**.



PE Uniform



A new style of **Unisex PE kit** was introduced last year, available from **Newport Sports**.

This updated kit features a more **affordable price** and a **fresh, modern design**, ensuring that students are **comfortable** during their PE lessons.

If you have **older children currently** attending Burton Borough, please note that there is a **one-year grace period** for using the **old style of PE kit**.



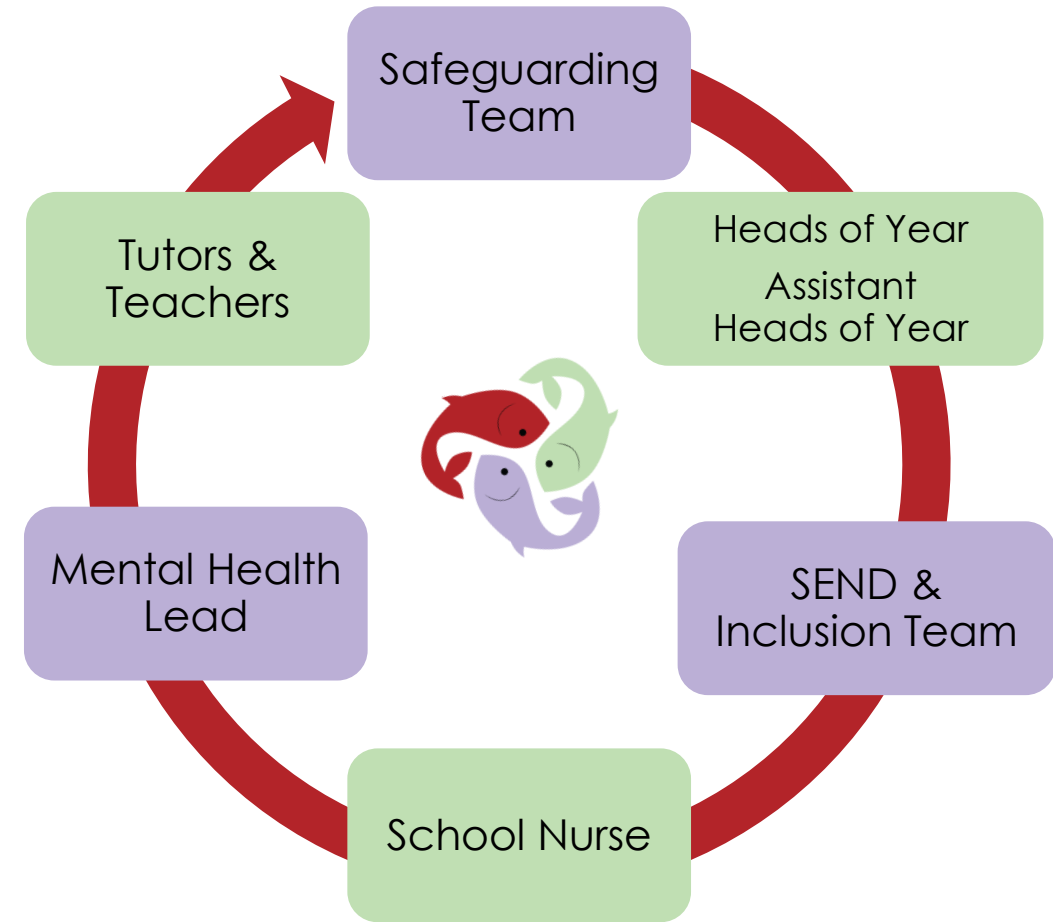
Safeguarding at BBS

As a school, we pride ourselves on the **pastoral care** and **positive relationships** that we have with our **students**.

It is common for secondary school students to face **personal challenges** throughout their **teenage years**.

We have a **highly experienced** team of staff who are here to **support** them.

We are your **extended family** – and we are here to **support you too**.



**The Safety And Wellbeing Of
Our Students Is Our Priority**

SEND & Inclusion at BBS

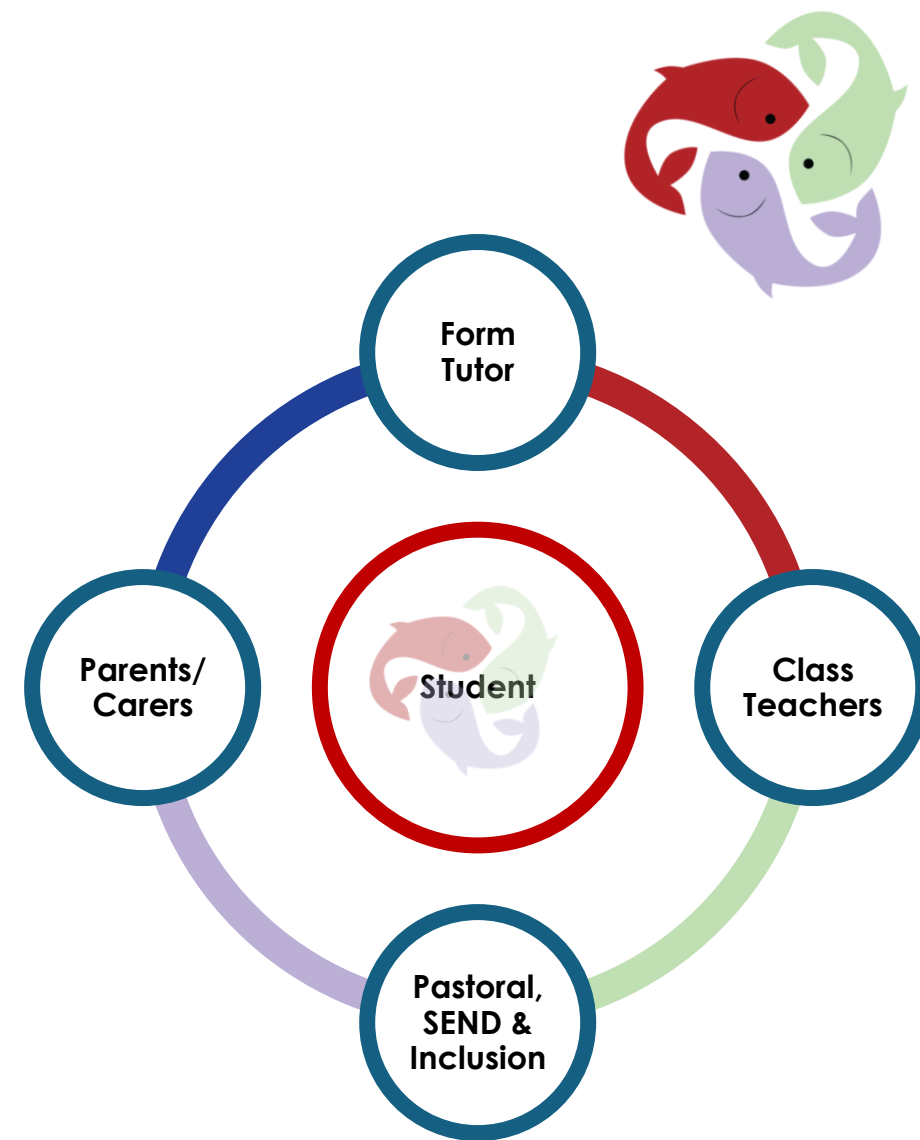
Caring for your child is our **collective responsibility**. Your child will have **great teaching**, provided by **trusted adults**, with whom they have **excellent relationships**.

We are **ambitious** for all our students – providing them with the knowledge, skills and habits needed to **thrive**, at school and **beyond**.

We are **proud** of our **Graduated Response** to the ever-changing needs of our students. **Identification** is timely, **interventions** are evidence-based, and **impact** is measurable.

Communication between staff, with parents, and to students, is **frequent** and **high-quality**. **Co-production** is the **key** to **success**!

Various **safe spaces** are available for children, both to **emotionally regulate** and **academically achieve**.



Personal Development

Personal Development is about the **wider development** of students both **in lessons** and via the vast **range of enrichment** that takes place **beyond the classroom**.

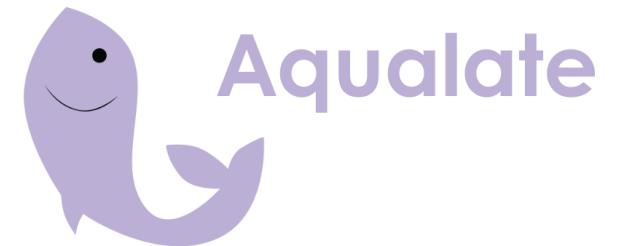
We believe strongly that the **ethos of our school** – being **AMBITIOUS**, **PROUD** and **CARING** allows our students to develop the character traits required to be responsible and successful citizens throughout their lives.

House system:

Our House system will allow students to get involved in the **Burton Borough community** through the **house charity**, which will be decided by students, and through **challenges** and inter house competitions.

Our houses will compete in events within our school and local community and are a great way to develop **confidence** and **leadership skills**.

Our houses are **Chetwynd**, **Hawkstone** and **Aqualate**, you will have received notification of the house your child is a member of, and we differentiate by **colour of tie**.



Pathways to Platinum

Students can follow one or more of the seven routes to be applicable:



Year 10 Platinum Applications



#1

Bronze, Silver, Gold
Recognition
Years 7-10



#2

School Council
Years 7-10



#3

Subject Student
Leader
Years 9-10



#4

Sports Leader
Years 7-10



#5

Performing Arts –
Passport to complete
Years 7-10



#6

Duke of Edinburgh



NEWPORT
TOWN COUNCIL

#7

Community Pride
14-week programme
Years 9 & 10

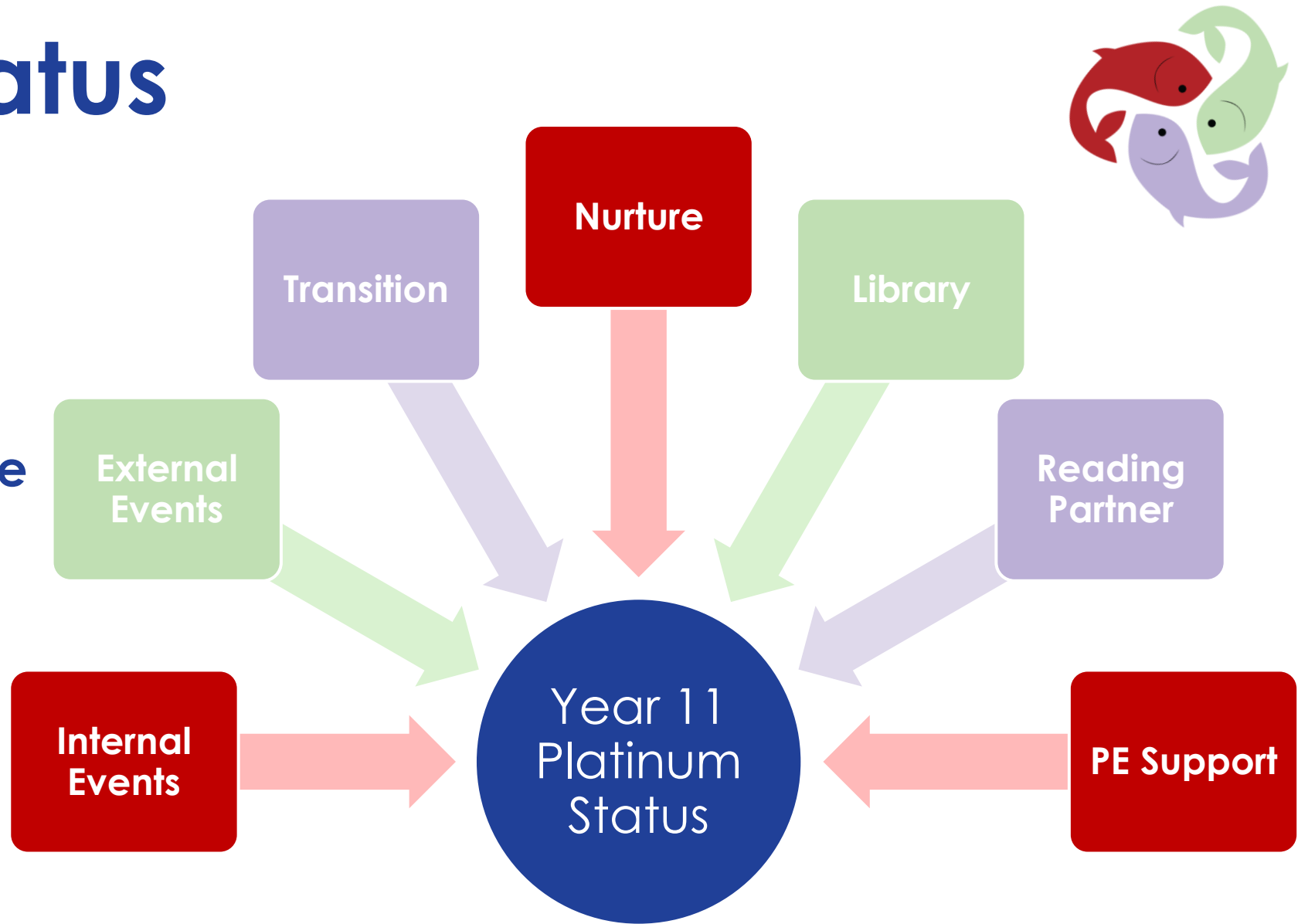
Platinum Status

Students can apply in **year 10** for one of the **platinum roles**.

Following their application, they will be invited to take part in the **interview process**.

Along with each role comes **responsibilities** and **benefits**.

Platinum is a **privilege**.



Rewards at BBS



Daily

Students can earn one **Culture Point** per lesson for demonstrating our **core values** of **ambition**, **pride**, and **care**. This means students have the opportunity to earn up to **five points each school day**. Students who achieve **25 points in a week** will have their names entered into a **random prize draw**.

Weekly

Success will be celebrated in **year group assemblies**. Parents and carers can view the **Culture Points** their child has earned via the **MCAS app**.



Termly and End of Year

Students will be **recognised** in **assemblies** with **certificates** and **prizes**. There will also be **end-of-year celebrations**, such as **reward breakfasts** with **rewards based** on **student votes**.

Ongoing Review

We are continually reviewing our **reward initiatives** to ensure they best recognise the **hard work** and **positive impact** our students make on our **school community**.

Transition Booklet & Video

Your child will have been given a **transition booklet**.

Using the booklet, your child will be able to **communicate with their tutor** about themselves and begin their **academic journey** through the **subject specific challenges**.

Please **encourage** your child to return their **completed booklet** to their tutor in **September** so they can receive the **recognition points** they have worked so hard to earn.

Visit our transition page on our website for more information and key documents related to transition >>
[Year 6 to 7 Transition - Academic Year 2024-25 | Burton Borough School](#)

The image shows the front cover of a 'Transition Booklet' for the 'CLASS OF 2030'. The cover has a white background with a decorative border at the top and bottom consisting of red, green, and purple segments. In the top left corner, there is a logo featuring three stylized fish in red, green, and purple. To the right of the logo, the text 'CLASS OF' is in blue, '2030' is in large red font, 'Year 6-7' is in blue, and 'Transition Booklet' is in blue. Below this, 'ALL ABOUT ME' is written in large red font. A large rectangular box with a blue border contains three labels: 'Name:' in red, 'Tutor Group:' in green, and 'House:' in purple. At the bottom of the cover, the words 'Ambitious', 'Proud', and 'Caring' are written in red, green, and purple respectively.

CLASS OF
2030
Year 6-7
Transition Booklet
ALL ABOUT ME

Name:

Tutor Group:

House:

Ambitious Proud Caring

Communication

How You Can Communicate With Us:



Call our main line: 01952 915408

Select the option for reporting absence if notifying us of a student absence



Use the Contact Form:

Available on our website: [Absence Reporting Form](#)



Email: burtonborough@lct.education

Emails are received by our central admin team, who aim to respond within 48 hours

Please note:

The school is closed during the six-week holidays.



Communication

How We Communicate With You

MCAS App (MyChildAtSchool):

Real-time access to your child's **Timetable, Attendance, Calendar, and Behaviour records**

ScoPay:

Manage your child's **canteen payments, trip payments, and Platinum tie purchases**

Bromcom MIS:

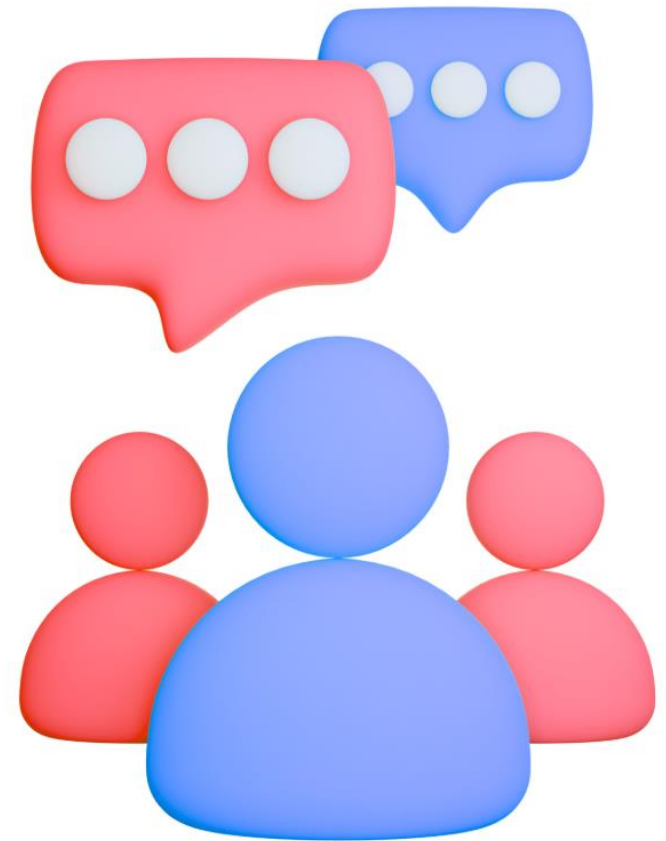
Our **main communication system** for: Important updates, Reward celebrations, School letters and documentation

Social Media:

Follow us for highlights and updates on Facebook and Instagram (search: *Burton Borough School*)

BBS Weekly Bulletin:

Sent at the end of each week - Principal's message, key dates & events, important school notices



Communication

How We Communicate With Students:

 **TV Screens Around School:**
Regularly updated with key weekly notices

 **Tutor Notices:**
Shared weekly during tutor time

 **Student Hosts (Year 8 privilege):**
Deliver appointment slips across school

 **Assemblies:**
Held weekly with themes linked to school or national focus

 **Microsoft Teams:**
Teachers can message students via subject or year group Teams



Public Transport

Telford & Wrekin School Transport

Register for a **bus pass** via:
travelassistance@telford.gov.uk

Info: Travelling to School – Telford & Wrekin Council

Arriva Public Bus Routes

Buses stopping near BBS: **5, 5A, X12, 102, 103**

Borland's Student-Only Bus Service

Registration via Telford & Wrekin Council required
Key stops: Meeson, Cherrington, Tibberton, Howle,
Sambrook, Puleston, Edgmond

Full details: [Welcome - Positively Driven](#)



Parent/Carer Voice

Thank you for joining us on this year's **transition journey**. As our current parents/carers will know, we have made further **changes to our transition offer** this year, and so we would really value your time to provide your **feedback** so we can continue to **improve** our offering for the **years ahead**.



Class of 2030!

Scan
the QR
Code



THANK YOU for your **support** and we are pleased to welcome you to our **BBS community**.

Our BBS Offer

At BBS, we are unwavering in our **commitment to delivering an exceptional education** that goes far **beyond the classroom.**

We believe every student has **unique potential**, and it is our mission to unlock that potential through:

- **high-quality teaching**
- **strong culture of support**
- **wide range of enriching experiences**



Our BBS Offer



We create a school environment where students are:

- **challenged to aim high**
- **encouraged to be proud of who they are**
- **supported to grow into confident, compassionate, and capable individuals.**

Whether through **academic achievement, personal development, or leadership opportunities** we empower every young person to thrive — **now and in the future.**



Our BBS Offer

Burton Borough is **more than a school**; it is a **community built on ambition, pride, and care** — where **excellence is nurtured, success is celebrated,** and every student is **inspired to become the very best version of themselves.**



What will happen next?

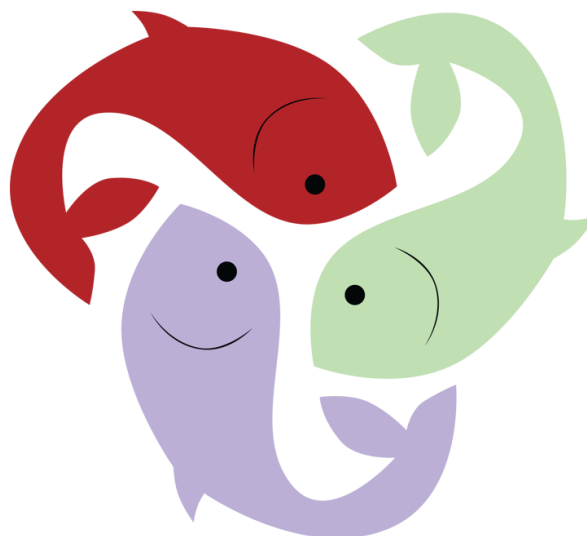


- **PD Days – School closed to students 1st & 2nd September**
- **First day – Wednesday 3rd September**
 - We will send out further information about the schedule for this day before the 3rd September.
- **ScoPay letters** were given out to students in our final assembly – we will organise biometric scanning on the first day in September.
- Should you have any further queries, please contact Miss Hicks via sam.hicks@lct.education.





@burtonborough



Burton Borough School

Burton Borough School

Audley Avenue, Newport, TF10 7DS

Email: burtonborough@lct.education

Tel: 01952 951408

www.burtonborough.org.uk/parents/year-6-7-transition