



September 2023

Dear Parents and Carers,

I would first like to thank you for a great start to the College term. It has been wonderful to see our students back in the classroom and engaging in their academic and spiritual growth.

### **Attendance**

As the Vice Principal of Pastoral Care at Carmel, I am writing to emphasise the vital importance of consistent attendance and its impact on your child's academic progress and wellbeing.

Our Catholic ethos calls us to nurture resilience, responsibility and commitment to community in our students. Attending college daily is essential for developing these virtues. While occasional absences may happen, we want to emphasise that students should attend college even if they have a common cold - staying home is only recommended if they have a high fever or contagious illness. It is our expectation that all students make every effort to be present and punctual each college day.

Our recent exam results show that for those pupils who had attendance of 95% and above, their attainment was two thirds of a grade higher than those below 95% attendance.

Research clearly demonstrates that frequent absences often lead to poor academic performance. Missed days mean missed learning. Attending college consistently helps students stay engaged, participate fully, and build meaningful relationships. Please schedule non-urgent medical and dental appointments outside of college hours whenever possible. Family holidays and trips should occur during breaks, not during term time. Holidays taken during term time, in accordance with our attendance policy will be unauthorised.

We recognise that regular attendance requires a partnership between families and the College. We are here to support you and your child and together we can encourage responsibility, resilience, and success.

Please see the attached information on attendance and punctuality.

### **Introduction of MyChildAtSchool App at Carmel College**

We are pleased to introduce MyChildAtSchool, a new communication platform powered by Bromcom, at Carmel College. This innovative system is tailored to strengthen our connection and provide you with invaluable insights into your child's academic journey.



Here are the main features of MyChildAtSchool:

- **Comprehensive Access to Information:** Effortlessly stay up-to-date with your child's attendance, timetable, behaviour, and assessment records.
- **Timely Notifications:** Receive prompt updates regarding school news, critical correspondence, and forthcoming events.
- **Secure Online Transaction:** Conduct secure online payments for school excursions, extracurricular activities, and manage meal accounts.
- **Ensure Accurate Contact Information:** Kindly verify that we have your most current contact details for effective communication.

MyChildAtSchool will give you vital information and updates. Please use the QR codes below if you have not already downloaded this app.

Yours sincerely,

Mrs Sarah Thornton  
Vice Principal for Pastoral Care/ DSL

Apple App Store Link



Google Play Store Link





A Member Of  
**Bishop  
Hogarth**

Catholic Education Trust

# ATTENDANCE

Every School Day Counts!



**365** days in a calendar year

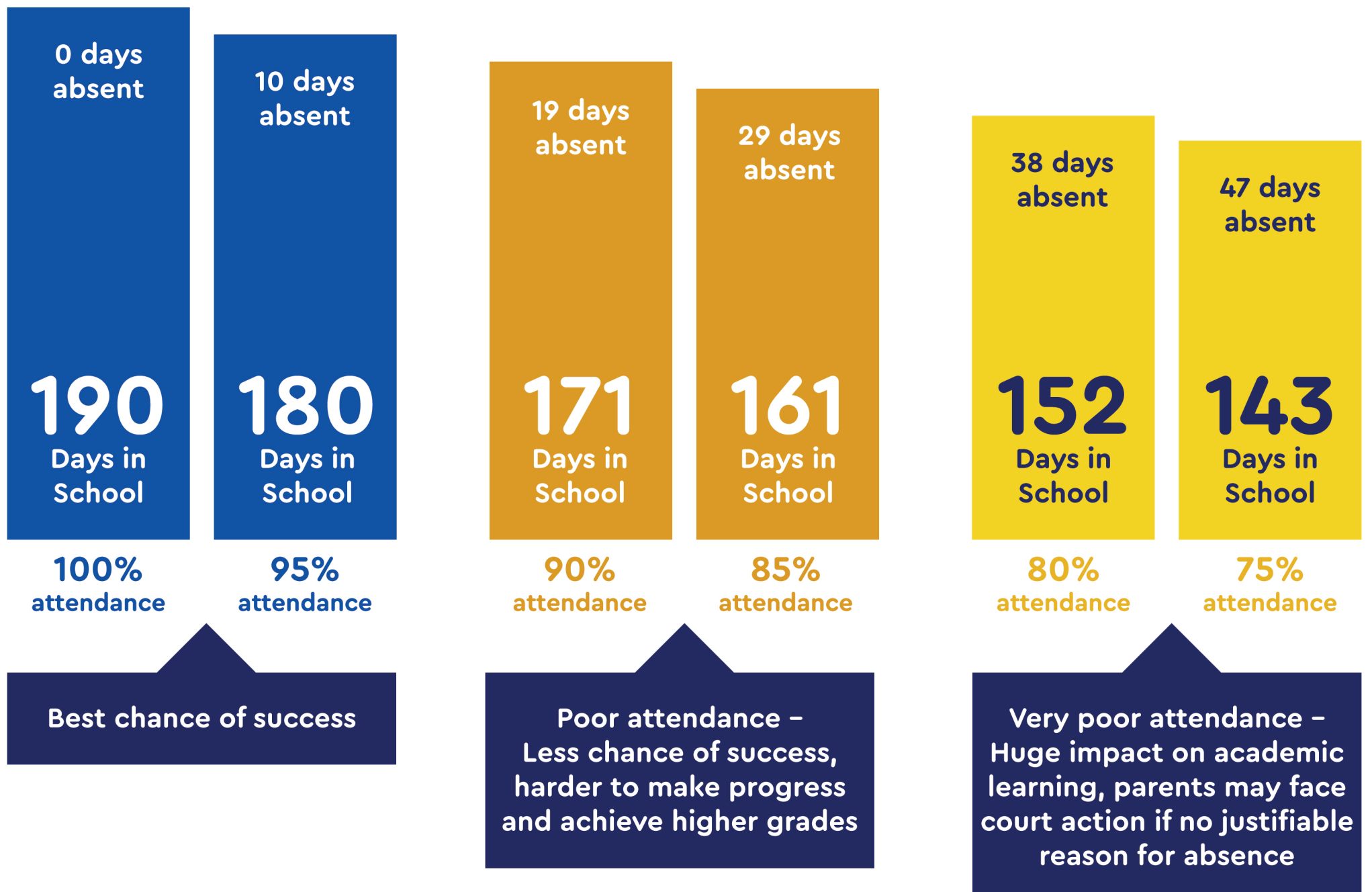
**190** school days each year

**175** non-term days each year

(All the time you need for shopping, holidays and appointments)

Good attendance means being in school at least 95% of the time or 180 to 190 days

Please don't let your child miss out on the education they deserve



Attend **Today** = Achieve **Tomorrow!**



A Member Of  
**Bishop Hogarth**  
Catholic Education Trust

# ATTENDANCE

Every School Day Counts!



**5** Minutes late each school day

=

**3** school days lost each year



Every day your child is absent impacts on their education and academic achievement

*There is a clear link between attendance and attainment*

95% Attendance	↔	9 Days Absent	↔	2 Weeks Absent	↔	50 Lessons Missed
90% Attendance	↔	19 Days Absent	↔	4 Weeks Absent	↔	100 Lessons Missed
85% Attendance	↔	29 Days Absent	↔	6 Weeks Absent	↔	150 Lessons Missed
80% Attendance	↔	38 Days Absent	↔	8 Weeks Absent	↔	200 Lessons Missed
75% Attendance	↔	48 Days Absent	↔	10 Weeks Absent	↔	250 Lessons Missed
70% Attendance	↔	57 Days Absent	↔	11.5 Weeks Absent	↔	290 Lessons Missed
65% Attendance	↔	67 Days Absent	↔	13.5 Weeks Absent	↔	340 Lessons Missed

**Missing School = Missing Out!**