

<https://www.youtube.com/watch?v=XKPdnE6BGew>  
<https://www.youtube.com/watch?v=SX6mow1AExI&list=PLAd0MSIZBSsHv1pioWRdg-pZCWTo84cdP&index=3&t=0s>

## Biology: Required Practical 1

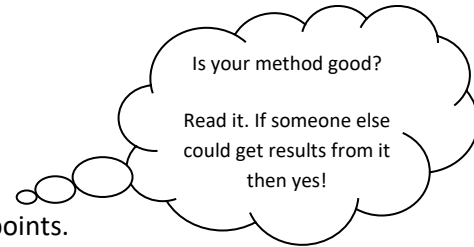


- What is this required practical about?

.....

- Label the equipment above.
- Think about how you carried out this practical.

Write a logical and comprehensive method, using numbered bullet points.



- How would you present your results for this practical?

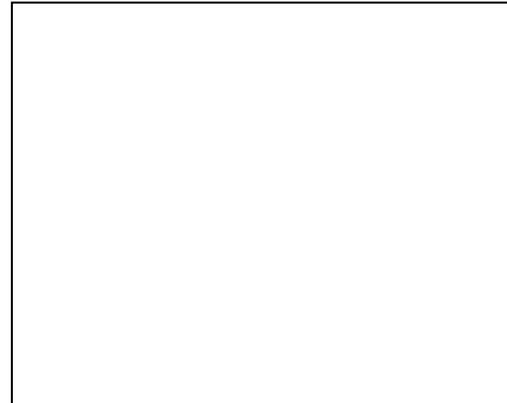
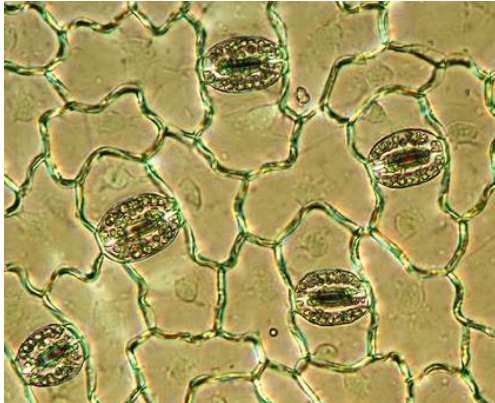
.....  
.....

- Recall the relevant equation.

.....  
.....

<https://www.youtube.com/watch?v=XKPdnE6BGew>  
<https://www.youtube.com/watch?v=5X6mow1AExI&list=PLAd0MSIZBSsHv1pioWRdg-pZCWTo84cdP&index=3&t=0s>

- Below is a picture of stomata on the bottom of a leaf. From the diagram, produce your own labelled scientific drawing.



- Below is a picture of graticule, these can be placed on your eye piece or stage and used to measure the length of a bacterial cell. Explain how.

.....  
.....

