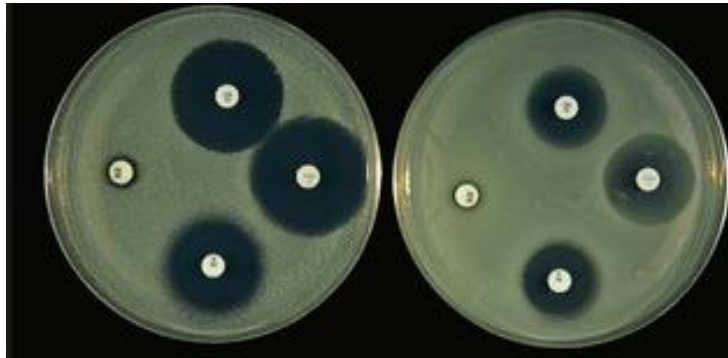


<https://www.youtube.com/watch?v=6SbIFQHRnRY&list=PLyLdDAgC3ROjaTKJF1sORxcSZSdxvczq9&index=2>

<https://www.youtube.com/watch?v=sI2Dp5fNdDY&list=PLAd0MSIZBSsHv1pioWRdg-pZCWT084cdP8>



## Biology: Required Practical 8



- What is this required practical about?

.....

- What do the white discs represent?

.....

.....

- What are the black circles around the white discs called? What do they show?

.....

.....

- How would a student calculate the area of one of these black circles?

.....

.....

- There are some serious health and safety implications of this experiment. Outline how you reduce the risk of these.

.....

.....

.....

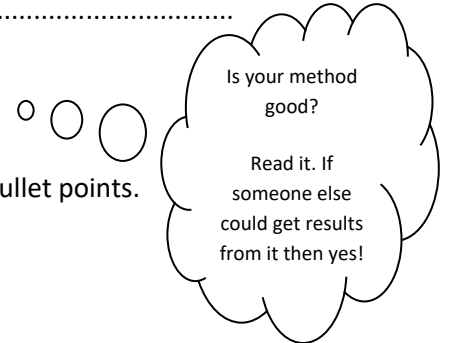
<https://www.youtube.com/watch?v=6SbIFQHRnRY&list=PLyLdDagC3ROjaTKJF1sORxcSZSdxvczq9&index=2>

<https://www.youtube.com/watch?v=sI2Dp5fNdDY&list=PLAd0MSIZBSsHv1pioWRdgpZCWT084cdP&index=7&t=0s>

- Write a hypothesis for this experiment.

.....  
.....

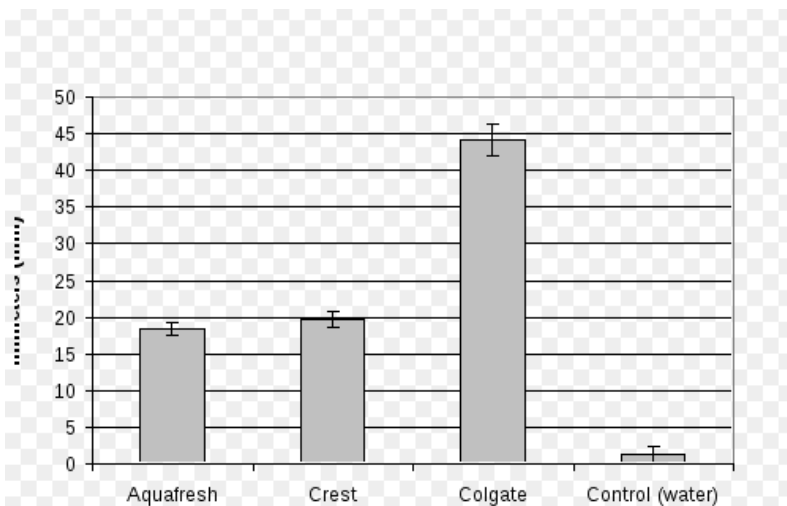
- Think about how you carried out this practical.  
Write a logical and comprehensive method, using numbered bullet points.



- What is one of the biggest sources of error in this experiment when making measurements?

.....  
.....

- A student carried out this experiment to identify which toothpaste was the most effective at preventing bacterial growth. Using the results shown in the bar chart, explain which toothpaste you think is most effective and why.



.....  
.....  
.....  
.....  
.....  
.....