

INSPIRE | CAPTIVATE | ENGAGE



Magna Groups provides OFSTED registered extended schools setting across the country. Our extended schools provisions offer working families flexible and affordable childcare solutions providing peace of mind that children have access to **Magna's** wide range of specialist activities every day.

Magna Extended Schools provides much needed provision for children beyond the school day. Our flexible approach enables families to access flexible session based upon their individual childcare needs. **Magna Groups** commitment is to offer families access to our breakfast and after school clubs when they need us. Our bespoke booking system enables families to book and pay for the days they require. As an Ofsted registered provider **Magna Groups Enterprises Limited** accepts all childcare vouchers.

BREAKFAST & AFTER SCHOOL CARE

BREAKFAST CLUB: 07:40 - 09:00
AFTER SCHOOL CARE 15:15 - 18:00

Ofsted

EYFS REGISTERED
BREAKFAST AND AFTER
SCHOOL CARE



www.magnagroups.com



0333 012 4984



info@magnagroups.com



Ofsted

STAFF PROVIDE A CARING AND NURTURING
ENVIRONMENT FOR ALL CHILDREN. THEY KNOW
CHILDREN WELL AND USE THEIR KNOWLEDGE TO
PLAN EXPERIENCES THAT CHILDREN ARE
INTERESTED IN. CHILDREN DEVELOP STRONG BONDS
WITH STAFF



BREAKFAST CLUB TIMETABLE

SPECIALIST DAILY
ACTIVITIES



	MONDAY	TUESDAY	WEDNESDAY	THURSDAY	FRIDAY
07:40 - 08:00	BREAKFAST DROP OFF & MORNING EARLY START ACTIVITIES				
08:00 - 08:30					
	KICK START ACTIVITIES				
08:30 - 09:00	MAGNA ACTIVE	MAGNA CREATIVE	MAGNA SPORTS	MAGNA WELL-BEING	MAGNA ACTIVE
	MAGNA CREATIVE	MAGNA SPORTS	MAGNA CREATIVE	MAGNA SPORTS	MAGNA CREATIVE
	DISMISSAL / SCHOOL DAY STARTS				

AFTER SCHOOL CLUB TIMETABLE

	MONDAY	TUESDAY	WEDNESDAY	THURSDAY	FRIDAY
15:15/15:30	COLLECTION OF CHILDREN & REGISTRATION				
15:30					
	ACTIVITY 1				
15:30 - 16:00	TEAM GAMES	AUTUMN CRAFTS	RUNNING GAMES	ZUMBA / YOGA	SURVIVAL SKILLS
	PAINT CRAFTS	BENCHBALL	CAPTURE THE FLAG	HANDBALL	TEAM RELAYS
	ACTIVITY 2				
16:00 - 16:30	AUTUMN CRAFTS	VOLLEYBALL	DANCE / DRAMA	CONE GAMES	VOLLEY BALL
	TENNIS / BADMINTON	CONE GAMES	SUMMER CRAFTS	TEAM SPORTS	SUMMER CRAFTS
16:30 - 17:00	MAIN HEALTHY SNACK				
	ACTIVITY 3 - SPECIALIST				
17:00 - 17:45	DODGEBALL	SCIENCE LAB	BASKETBALL	JUNK MODELLING	OUTDOOR ADVENTURE
18:00	COLLECTION - TIME TO GO HOME				



MAGNA STAFF

Magna will have a consistent team working in your school to ensure consistency for your child/ren and you as parents. In many of our school settings we have school staff who join Team Magna to work in our breakfast and after school clubs which is great for the children attending.

All Magna Team members are fully qualified, DBS checked and complete our recognised training to ensure we keep deliver our full programme of activities and remain fully Ofsted compliant.

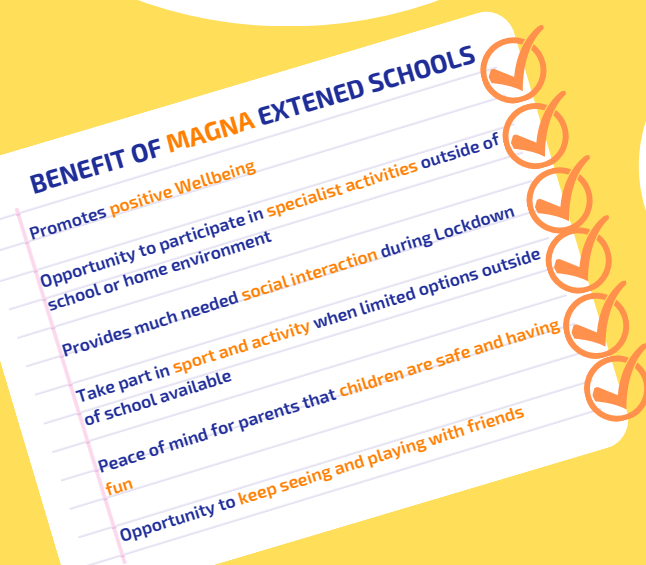


HEALTHY EATING

Magna are registered as a food business and meet all school food standards and Food Hygiene requirements.

For breakfast children can choose from a Continental style breakfast from a range of cereals, Toast, Crumpets and pancakes with choice of spreads and fruits.

After school depending on your child's setting our lite bite will offer a cold or hot menu (please see your settings newsletter for your termly menu) our after school menu is not designed to replace an evening meal, however is a healthy portion to keep their energy levels up. Children attending our after school provisions will have access to a fruit snack and a lite bite





INCLUSION AT MAGNA

Magna are a fully inclusive provider should your child have an additional need please ensure you provide as much information as possible when you register your child online as part of your child information. Ahead of your child attending our team will ensure we speak with you to ensure we fully understand your child's individual needs.

Should your child have a medical condition which requires administering of medication we request written information of your child's care plan, your permission to administer and clearly labelled boxed medication to remain with us whilst your child attends.

DROP OFF & COLLECTION

Each of our settings have a designated drop off or collection point, these will be clearly identifiable across all our settings. Settings with have either a buzzer or doorbell system. Please note an adult must always sign children into Magna's care in the mornings and only registered collectors will be permitted to collect children afterschool.

If you need to arrange for a non-registered collector to collect your child, please notify our customer service team in writing to info@magnagroups.com (Please note you will need to provide collectors full name and a collection password, Upon collection ID and password will be requested by our team, and your child will be asked to confirm the person is know to them before they can be signed out)



COLLECTION TIMES

With our afterschool provisions being very popular certain times throughout our sessions may cause a delay when collecting your child. Main snack times take place around 16:30 -17:00, where children are normally eating and want to finish their food,

We aim to have all children in main areas from around '17:30-18:00 to help reduce waiting times for parents making collection

FREQUENTLY ASKED QUESTIONS

CAN I BOOK ADHOC SESSIONS?

Yes, subject to spaces being available on the date you require. For adhoc requests please email info@magnagroups.com or call 0333 012 4984



CAN I PAY WITH TAX-FREE CHILDCARE OR CHILDCARE VOUCHERS?

Yes, Magna accept all Tax free Childcare and Childcare Vouchers payments. If your provider has not currently registered us, please request Magna via your providers website. Please note childcare payments take up to 10 days to be received from your provider and must be paid in advance of your first session.

WHAT IS CLASSED AS A LATE BOOKING

The term late booking is for booking request made on the day or after our office hours the night before your requested session. Late bookings have an additional £5.00 charge, where possible please avoid booking on the day. Late bookings will need to be paid separately and in advance (childcare payments are not accepted).

CAN I SPREAD COST OF MY BOOKINGS

We understand affordability can be a concern, so we aim to support our families as much as possible. If you would like to arrange a payment plan or require support to access funding schemes contact info@magnagroups.com. We strive to make our services available to all families.



WHY MUST I PAY IN ADVANCE

Payments made in advance (whether it be in full or through one of our flexible payment plans) allow us to accurately confirm attendance numbers and ensure we always have enough staff present at our clubs in accordance with the latest Ofsted regulations and guidelines.

WHY DO WE BOOK SET DAYS EACH HALF TERM?

As an OFSTED registered provider we are required to follow strict ratios, we also want to ensure we can meet the childcare needs of our families. All Magna staff are employed full time to ensure we provide consistency and quality of care. Knowing who is attending the half-term ahead, ensures we staff accordingly to care for the number of children attending, keeping children safe and meeting regulatory requirements.

IS THERE A SIBLING DISCOUNT

Yes, Magna offer automatic 10% sibling discount when booking your children's sessions at the same.



WHAT ACTIVITIES ARE AVAILABLE?

Everyday children will have the opportunity to participate in a carousel of specialist activities from: MAGNA Sports, MAGNA Active, MAGNA creative, MAGNA Wellbeing - Please see activity timetables.



WHY DO SOME SESSIONS SHOW AS FULLY BOOKED OR WAITING LIST 'BOOKED'?

Magna, are committed to meeting the childcare needs of our families, Ofsted have strict rules on the number of children we can safely accept as part of our registration based upon the spaces we are permitted to use in our venues. Some days/sessions are more popular and can reach capacity. This is where booking in advance for the half term ahead helps us staff accordingly and speak with our schools and Ofsted to safely access additional spaces where possible.

HOW TO BOOK PAID SPACES



Visit our website:
www.magnagroups.com login or create an account



Select your venue that you would like your child to attend



Select your chosen days and times that suit you



Confirm your selection and pay via our secure online system

Remember, Magna accept childcare vouchers from all top suppliers and are of course OFSTED registered.

If you are having trouble **booking online**, please email us at info@magnagroups.com or call us on

0333 012 4984, and we will be happy to help.



10% SIBLING DISCOUNT
Fully OFSTED registered, Tax-Free Childcare and
Childcare Vouchers accepted