

# SPRING 2025 - NEWSLETTER



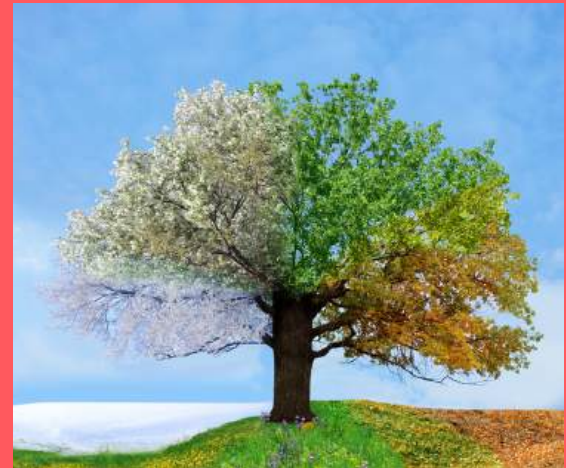
## THE BEAUTY OF NATURE



As we transition from winter to spring, this edition focuses on 'Weather'. Exploring weather can enhance learning across the curriculum, especially in KS1 Science by observing seasonal changes and weather patterns.

Exploring the weather can be an exciting stimulus for supporting learning across the curriculum. The KS1 Science curriculum can be supported by observing changes across the 4 seasons, for example by venturing outside regularly and observing how plants and trees in the school grounds or local environment change throughout the year.

This study can be extended by thinking about the weather; observing and describing weather associated with the seasons and how the length of day varies. Heading outside regularly to make observations and measurements of the weather, making a rain gauge, and talking about how the weather and seasons affect children's behaviour and clothing can all help inspire learning in the outdoors.



# KEY ACTIVITIES



## RAIN GAUGE

A simple rain gauge is an excellent tool for measuring rainfall. To create one, students will need an empty jar or plastic bottle with the labels removed. They can either place a ruler on the side of the jar and mark it in centimetres or cut the top off a bottle and place it upside down in the main body. The bottle should be buried outside in an open area away from trees to ensure accurate measurements. Recording the levels of rainfall regularly, such as daily, and emptying the gauge each time, helps students practice data recording and analysis. They can also design a suitable table to record their results, enhancing their organisational skills.



## WIND EXPERIMENTS

Observing the wind can be a fun and educational activity. Students can create a simple weather vane to determine wind direction. This can be done by attaching a straw to the eraser end of a pencil with a pin, allowing it to spin freely. Mounted so that it can rotate, this weather vane helps students understand one of the factors used to predict the weather. By combining this with other measurements like temperature, wind speed, pressure, and humidity, students can gain a comprehensive understanding of weather prediction.



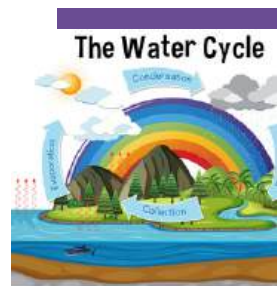
## KS2 CURRICULUM SUPPORT

Weather can be used as an engaging stimulus to help children make observations, take accurate measurements, and gather, record, and classify data in different ways. For example, using a portable cloud identification frame can help students identify different types of clouds and record their observations. This hands-on approach not only supports their understanding of weather but also enhances their data collection and classification skills.



## WATER CYCLE

Links can be made between learning about the weather and the water cycle. To teach about evaporation and condensation, take lessons outside to make them more practical and engaging. Activities like exploring evaporation on the playground and using natural materials to create land art depicting the water cycle can turn abstract concepts into memorable, hands-on learning experiences. Another fun activity is creating a 'water cycle in a bag,' which visually demonstrates the processes of evaporation, condensation, and precipitation.



## EYFS ACTIVITY

For younger children in the Early Years Foundation Stage (EYFS), weather-based activities can support play-based learning. One engaging activity is the 'waterproof shelter challenge,' from Learning Through Landscapes (see 'Free Resources'), where children select suitable materials to build a waterproof shelter. This activity not only teaches them about materials and their properties but also encourages problem-solving and teamwork.





# EMBRACING OUTDOOR LEARNING



## WEEKE PRIMARY SCHOOL'S INVESTMENT IN A YURT

By Mr J.R.Kirkham (Headteacher)

At Weeke Primary School, we believe that learning should extend beyond the four walls of a classroom. This commitment to enhancing educational experiences through outdoor learning has led to a significant investment in a Yurt, creating a versatile and authentic outdoor environment for our children and staff to thrive in all year round.

### THE YURT HAS BEEN USED DAILY FOR:

**Outdoor Learning Sessions:** Engaging children in hands-on experiences that enhance their understanding of the curriculum.

**Curriculum Links:** The Yurt served as the backdrop for our Stone Age Day, where children immersed themselves in history through interactive learning.

**Extracurricular Clubs:** From art to science, the Yurt has hosted a variety of clubs that encourage creativity and exploration.

**After School Club:** A safe and inspiring environment for children to unwind and engage in enriching activities.

**Forest Schools Sessions:** Providing children with the opportunity to learn about nature and develop essential life skills.

**Festive Enrichment Area:** During the holiday season, the Yurt became a space for children to create natural Christmas decorations using tools, fostering creativity and teamwork.

### BUILDING THE YURT: A COLLABORATIVE EFFORT

Our journey began with the collaboration of dedicated staff and the expertise of Yurts4Life, a company renowned for its commitment to sustainability and quality craftsmanship. The Yurt is constructed using materials sourced entirely from Southern English woodlands, ensuring that our investment is not only beneficial for our school community but also environmentally responsible. The groundwork for the Yurt was laid by a committed team within the school, including our Headteacher, Jonathan Kirkham. This hands-on approach fostered a sense of ownership and pride among staff and students alike, as they witnessed the transformation of our outdoor space.

#### Creating a Practical Space for All Ages

The Yurt is designed to be a practical area that caters to all ages, providing a welcoming and robust environment for various activities. With thoughtful finishing touches, we have ensured that the space is adaptable for different learning experiences. From outdoor learning sessions to extracurricular clubs, the Yurt has become a hub of activity. Our whole-school vision and commitment to outdoor learning have allowed us to utilise this versatile space effectively.





# COMMUNITY ENGAGEMENT AND FUTURE ASPIRATIONS

The benefits of the Yurt extend beyond our school. We have opened our doors to local nurseries, allowing them to experience the joys of outdoor learning. We aspire to expand this initiative to include wider community groups, reinforcing our commitment to fostering a love for nature and learning in all.

Situated ideally on our large school field, adjacent to a mature woodland area, the Yurt provides a serene and inspiring backdrop for learning. We are thrilled with the positive impact it has made on our school community, offering a natural and welcoming space that encourages exploration and growth.

## INVITATION TO VISIT

Weeke Primary School warmly welcomes visiting schools and community groups to experience our Yurt firsthand. If you are interested in bringing a small group of children to explore this unique outdoor learning environment, please contact us at [admin@weeke.hants.sch.uk](mailto:admin@weeke.hants.sch.uk). We believe that sharing our journey and resources will inspire others to embrace the benefits of outdoor education.

In conclusion, the Yurt at Weeke Primary School stands as a testament to our dedication to outdoor learning. By investing in this authentic environment, we are not only enriching the educational experiences of our children but also fostering a deeper connection with nature and our community. Together, we are paving the way for a brighter, more sustainable future in education.





# CLASS WEATHER RECORD PROJECT ONGOING EXPERIENTIAL LEARNING

## A SIMPLE SESSION OUTLINE BY REBECCA EDWARDS, ENVIRONMENTAL LEARNING COORDINATOR AT RUNWAY'S END OUTDOOR CENTRE

### OVERVIEW

This brief lesson plan is the kick off session for a year-long class project where, by the end of the year, you'll have a colourful temperature record (think temperature blankets but with less knitting!). Following this plan keeps engagement with outdoor spaces up all year long, and the findings can be used as a platform to engage in sustainability, climate change, the scientific process, number comparison, or creative literature!

In this initial session students explore the units and equipment for measuring temperature and factors impacting microclimates. This project requires 3-4 outdoor thermometers, however, to add an extra creative D&T dimension to your lesson, students could create their own using simple materials – great resources can be found on the met office website: [metoffice.gov.uk/weather/learn-about/met-office-for-schools](http://metoffice.gov.uk/weather/learn-about/met-office-for-schools).

**SET UP TIME: 15 MINUTES**

**AGE RANGE: YEAR 6 (CAN BE ADAPTED AS APPROPRIATE)**

**TIME: APPROX. 1 HOUR (IF CREATING THE THERMOMETERS THEN 2-3 HOURS)**

### RESOURCES REQUIRED:

- 3-4 thermometers (depending on number of sites you wish to survey!)
- 3-4 different outdoor spaces (e.g. field, concrete buildings, woodland)
- 3-4 large A3+ class temperature record OR individual temperature records (see attached).

### SESSION PLAN

1. Explore the Environment: Head outside to your first site. Encourage students to note factors affecting temperature (e.g. coverage, materials, colours).
2. Predict Temperature Changes: Predict how the temperature will change throughout the year. After visiting 3-4 sites, compare predictions (e.g. which sites will be warmer or cooler, which will have a less extreme range).
3. Set Up Thermometers: Find a sheltered, out-of-reach spot to store the thermometer. Ensure all students can read the thermometer.
4. Regular Temperature Readings: Revisit the site weekly (or daily if motivated). Assign a new student as the temperature monitor each week.

Location: \_\_\_\_\_

DATE	TEMPERATURE	COLOUR
Week 1		
Week 2		
Week 3		
Week 4		
Week 5		
Week 6		
Week 7		
Week 8		
Week 9		
Week 10		
Week 11		
Week 12		
Week 13		
Week 14		
Week 15		
Week 16		
Week 17		
Week 18		
Week 19		
Week 20		
Week 21		
Week 22		
Week 23		
Week 24		
Week 25		

<-10 °C	<-10 to 0 °C	>0 to 10 °C	>10 to 20 °C	>20 to 30 °C	>30 °C
---------	--------------	-------------	--------------	--------------	--------

Find out more about Runway's End's New Environmental Programme  
Email: [rebecca.edwards2@hants.gov.uk](mailto:rebecca.edwards2@hants.gov.uk) or  
call 01252 344421 to learn more!



# WHAT WEATHER CAN I STILL TAKE CHILDREN OUTDOORS IN?

Emma Groves - HIAS Primary Geography Advisor

Weather can often impact the choices that we make. It can affect what we wear, what we do and is frequently a topic of conversation. Sometimes as adults we try to escape the weather, flying to places with warmer climates to escape the winter cold. Children tend to associate weather with their experiences, remembering times such as ice-cream in the sunshine with family, having wet play inside at school or the very rare occasions we have snow in Hampshire.

In the Early Years, weather is often seen to be less of a barrier. Many Early Years settings adopt the 'there is no such thing as bad weather; just bad clothing!' approach. A lot of settings encourage children to keep their wellies on site. Providing children with the clothing they need for outside provision, allows them to experience a variety of weathers. Weather produces exciting sensory experiences that are great opportunities for communication and language development as well as supporting many other areas of the Early Years Curriculum.

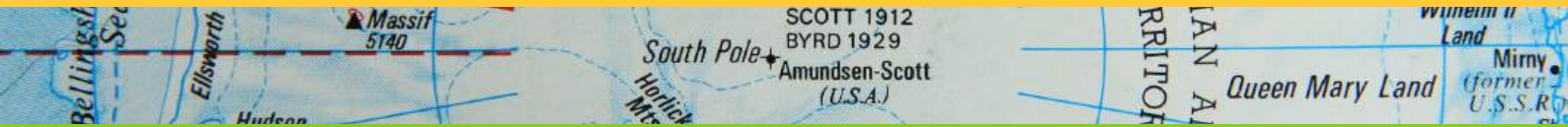
Obviously, this provision would need to be revised during more extreme weather conditions and the impact of different weathers for different settings needs to be considered. For example, forest school settings have to risk assess wind during the planning of their sessions more than other environments might.

As children get older, maintaining this positive attitude towards weather in educational provision can be tricky, as there is often so much to fit in the curriculum. Finding time for children to engage in the same sensory high-talk experiences can be challenging. In this article, I hope to provide you with some examples of how children can explore weather during outside fieldwork activities in geography and science, gaining further information about the world around them during high-talk practical activities.



# LONGITUDINAL STUDIES

Longitudinal studies are a great way of tracking how weather changes across the course of the school year. It allows the children to gain a better understanding of how climate data is formed, which will support them as they learn about places on a more global scale. During these studies, children make observations and measurements at different time intervals, gathering information about how weather changes. These intervals of time can be over the course of a week, a half-term or over the course of the academic year. Data from these findings is collected, presented and concluded, giving children lots of opportunities to communicate their findings.



## ENQUIRY QUESTIONS

Engaging in weather through geographical enquiry or scientific investigation, allows children to engage with the information whilst gaining a disciplinary understanding of the subjects. Enquiries/investigations provide children with practical and purposeful learning opportunities. Some of the following enquiry questions could be used to during weather fieldwork:

- When would be the best time for Little Miss Sunshine to visit our school?
- How does the oak tree on our playground change over time?
- Where is the windiest part of our playground?
- What types of clouds form over our school and why?
- When does it rain the most in our school? (what month)
- Which direction does the wind usually blow in our school?



## USING EQUIPMENT

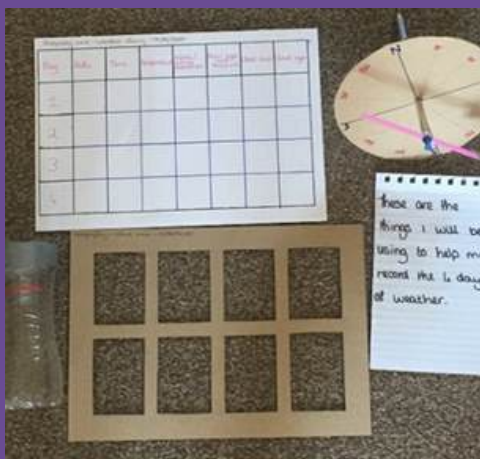
There is a wide range of equipment that can be used in fieldwork to measure weather. These measurements can be taken over time and even tracked daily by members of the class. Handheld thermometers and soil probes can be used to determine the temperatures of the air and soil at different times of the year. Outside thermometers can also be stuck to classroom windows, allowing an easy daily measurement. Anemometers and weather vanes can be used to measure wind speed and direction. Rain gauges can measure rainfall over a period of time and can be left outside to be checked daily by a member of the class. Seeing how the rain evaporates in the gauge can also support children's learning about the water cycle. Okta grids can be placed on windows to divide the sky up into several sections, allowing children to track and measure how much cloud or what types of cloud are visible over different days. They can also be taken outside by the children to measure clouds over a particular area of the sky.

Lots of equipment used to measure weather can be made in class using everyday materials without the need for large expenditures to the school.





OKTA grid



Rain gauge, OKTA grid and wind vane



Rain gauges

## OUR WEATHER AND YOUR WEATHER

Data collected from weather fieldwork can be linked to other areas of the geography curriculum by comparing it to the weather and climate of other places. It allows the places chosen for regional studies to be looked at through a different geographical lens through making quick comparisons. It also supports the good practice of making links between areas of geographical knowledge, helping children to develop a broader geographical understanding. Websites such as <https://en.climate-data.org/> are useful in discovering weather and climate information about a place of study.



## WHAT WEATHER CAN I STILL TAKE CHILDREN OUTDOORS IN?

In conclusion, allowing children to venture outside in a variety of weathers can provide them with a wide range of possibilities for outdoor fieldwork. It is just as important for older children as well as younger children to dress appropriately for the weather and venture outside to study it. Teacher judgement can be used to risk-assess the environment being used during more extreme weather conditions and this can depend on which environment is being investigated.

If you wish to know more about developing ideas for geographical fieldwork in your school or developing your geography long-term overview to include more outdoor experiences please get in contact - [emma.groves@hants.gov.uk](mailto:emma.groves@hants.gov.uk)







# STUDENTS JOIN LEPE COUNTRY PARK'S MAMMAL PROJECT IN PURSUIT OF JOHN MUIR AWARD

Abby Young - Senior Ranger at Lepe Country Park



Lepe Country Park's Ranger Team has partnered with students from Oaklodge School to launch an exciting new mammal project as part of their efforts to achieve the John Muir Award. This initiative is designed to help students connect with nature, develop key conservation skills, and contribute to the protection of local wildlife. The project focuses on monitoring and studying the diverse mammal species that inhabit Lepe Point Nature Reserve, located within the park.



Students will engage in hands-on activities such as setting up wildlife camera traps, identifying animal tracks and signs, and learning about the behaviours and habitats of various mammalian species, including badgers, foxes, hedgehogs, and small rodents. A key objective of the project is to answer a long-standing question—whether Harvest Mice are present within the reserve. To investigate this, students will install specially designed Harvest Mouse homes made from repurposed tennis balls, generously donated by Totton & Eling Tennis Club.

Through this collaboration, students will gain valuable insights into the natural world while making meaningful contributions to conservation efforts. The John Muir Award encourages participants to discover, explore, and protect wild places while sharing their experiences with others. As part of the project, students will present their findings to visitors at The Lookout Café, helping to raise awareness about the importance of preserving local wildlife. In addition to its conservation impact, the project offers students an educational experience that enhances their understanding of the environment and fosters a lifelong appreciation for nature.

Running until July, the project will see students contribute to ongoing monitoring efforts and help develop habitat improvement plans based on their observations. Lepe Country Park will share updates on the project's progress through its social media channels and website, inviting the community to stay informed and get involved in supporting local conservation initiatives.



# IN THE NEWS...

HAMPSHIRE OUTDOORS

## HAMPSHIRE PE CONFERENCE 2025

FRIDAY 20TH JUNE

WILDERN SCHOOL, SOUTHAMPTON

SLA  
£155

£195  
NON SLA

THE DAY INCLUDES;

- KEY NOTES: WOMEN IN SPORT, INCLUSIVE PE FOR SEND CHILDREN AUTHOR FAITH NEWTON, AFPE
- WORKSHOPS: TRAUMA INFORMED PE, ULTIMATE FRISBEE, AI AND PE, INCLUSIVE PE FOR SEND CHILDREN AND MORE
- TEACHMEETS AND NETWORKING



[BOOK HERE](#)



[www.hants.gov.uk](http://www.hants.gov.uk)

## IOW PE/OE CONFERENCE 2025 SAVE THE DATE

RYDE SCHOOL  
TUESDAY 8TH JULY



[www.hants.gov.uk](http://www.hants.gov.uk)

The next meeting of the **Hampshire Outdoor Learning Group** will be 4-6pm on **Thursday 20th March 2025** at Downton Primary School, SP5 3LZ. Please email Mary Jackson [mjackson@lhl.org.uk](mailto:mjackson@lhl.org.uk) if you wish to attend.



### NEW and FREE Learning Hub

The South Downs National Park have launched a **new learning hub**. It is full of free resources that can be used in the classroom or on your own self-led visit. It covers a range of subjects from wildlife and habitats, to the dark night skies and mindful activities outdoors. There are fantastic ready-to-use resources and exciting links to other sources for topics such as National Parks, The South Downs and Climate Action.



### British Science Week 2025 Taster Activity Pack is Now Available!

The **free taster activity pack** for **British Science Week 2025 (7 -16 March 2025)**, are available to download now! You'll find activities for children and young people from under 5s to around age 14 all in one bumper taster pack! The theme for 2025's packs and poster competition is 'Change and adapt'.





# FREE CPD & RESOURCES



## LEARNING THROUGH LANDSCAPES 'CLIMATE SCHOOL 180'



**Apply now for Climate School 180 - Learning through Landscapes' fully funded programme transforming climate education in UK schools!**

We know climate change is causing more frequent and intense weather events, and many children are experiencing first hand the effects of flooding and drought in the UK. Climate School 180 supports school leaders to embed climate and sustainability across the curriculum, using the school grounds to look at ways to mitigate and adapt to climate change. Working collaboratively with educators from state primary and secondary schools across the UK, our staff will support schools in learning how to:

- Deliver high-quality climate education to their pupils.
- Create their own development plan embedding climate and sustainability across the whole curriculum.
- Deliver DfE climate action plans, required for all schools in England by 2025.
- Create nature-based solutions in their school grounds, through hands-on experience - adapting their grounds for the changing future.

By prioritising quality climate education, Climate School 180 will create a legacy of confident teachers and young people with knowledge and skills for the future, as well as the tools and motivation to make a difference now.

**How to apply:** Round 4 opens on 2 April 2025 and closes 9 May 2025 for delivery Autumn term 2025 / Spring term 2026. Further details and the application are available on our website. If you have any questions, please get in touch at [climate180@ltl.org.uk](mailto:climate180@ltl.org.uk) or call Lesley on 01786 465934.



**"The leaders were really knowledgeable and could provide really useful advice."**

**"Once we've got into it ..... I imagine it will be transformative."**

**"We feel confident to take our plans forward"**

**"Climate School 180 has helped to sharpen our curriculum with specific reference to climate action."**

# FREE CPD & RESOURCES



**FORESTRY ENGLAND**



**Forestry England**

With Spring just around the corner now is the perfect time to don the wellies, wrap up warm and explore the nature on your doorstep.

What better way is there to connect with nature than to visit a forest near you? How about a visit to [Alice Holt Forest](#) - there's an adventure waiting there for you and your class! You could link a visit to British Science Week, (7th-16th March) - the theme this year is 'Change and Adapt'. Spring is a time of change in the natural world when our forests come out of Winter into the next season.

Our [downloadable activity sheets](#) and educational programmes are linked to the curriculum and are perfect for bringing classroom topics alive. The links below take you to ideas of lesson plans and activities that can be used in your school grounds or in the forest.

- [Spring spotter challenge activity sheet](#) - as winter turns to Spring this spotter sheet will help you notice the changes around you.
- [Spring I-Spy activity sheet](#) - what signs of Spring can you spot from your window or during your daily outdoor exercise.
- [Twilight Activities activity sheet](#) - fun quizzes and facts that can be used to introduce your class to the animals that visit the forest under the cover of darkness.
- [Temperate Forests lesson plan \(Key stage 2 Geography 7-11 years\)](#) - learn about our native woodlands and how their adaptations contrast to tropical rainforests.
- [Landscape Change lesson plans \(Key stage 3 Geography 11-14 years\)](#) - Created in collaboration with Geography South West, our set of science resources draw on Forestry England's expertise in forest management to inspire your students. Discover lesson plans, fieldwork activities, real life case studies and data to bring classroom topics to life.

You can find out more about visiting the Nation's forests with your school here [Educational forest visits](#) | [Forestry England](#). To book your trip to Alice Holt Forest contact [learning.south@forestryengland.uk](mailto:learning.south@forestryengland.uk). Our friendly team will help you plan your trip so your class get the most fun from your day.



## WATERPROOF SHELTER CHALLENGE



Learning  
through  
Landscapes

Learning Through Landscapes offers a fantastic resource called the 'Waterproof Shelter Challenge'. This activity is designed for Early Years Foundation Stage (EYFS) children and supports play-based learning by encouraging them to select suitable materials to build a waterproof shelter. It's a great way to teach children about materials and their properties while fostering problem-solving and teamwork skills.

You can find this resource and more on their website: [Learning Through Landscapes](#).



# FREE CPD & RESOURCES



## MET OFFICE FOR SCHOOLS RESOURCES



The Met Office offers a comprehensive set of free, curriculum-linked resources designed to spark students' curiosity about weather and climate. These resources cover a range of topics, including weather forecasting, extreme weather, climate change, and the impact of weather on communities. They are suitable for various age groups and can be used by teachers, home educators, and community group leaders to make learning engaging and enjoyable. Explore these resources and more at the [Met Office for Schools](#) page

## PODCASTS

### The Forest School Podcast

Delicious waffle chat about education, nature connection, child development & community building. Hosted by Lewis Ames & Wem Southerden.



### The Wild Minds Podcasts

The Wild Minds Podcast by Marina Robb, Forest School and Nature-based Trainer and founder of The Outdoor Teacher.



### The Outdoor Ed School Podcast

These free podcasts from the Outdoor Ed School will walk you through how to provide meaningful team challenges, problem solving tasks, review models, and group discussion topics outdoors.



### 1000 Hours Outside Podcasts

1000 Hours Outside is another American organisation. Their 1000 Hours Outdoor Podcasts are free and through their various speakers and authors, they cover many interesting subjects on outdoor learning.



## WEBINARS

### Forest School Association Free Webinars

The [Forest School Association](#) (FSA) public archive holds a selection of their webinar recordings, which are free to view. FSA Members have access to the entire back catalogue of webinars.



### Free Outdoor Learning Webinars

Although American, you might find [these free webinars](#) from the [Outdoor Learning Store](#) useful:

- How to Teach Nature Journaling: Curiosity, Wonder, Attention
- Climate Connections: Climate Change Education in Outdoor Learning

Or [these recordings](#) from previous webinars.



# THEMES AND DAYS FOR OUTDOOR LEARNING

Here are lots of events and activities coming up that can be used to support getting children active and learning outdoors! See [Trailblazer Calendar of Themes and Days for Outdoor Learning](#) for the academic year 2024/25, so you can see what's coming up and plan accordingly!

	DATE	EVENT	ALL THE INFO
	3rd March	United Nations World Wildlife Day	A special day for wildlife. <u>Why not carry out a survey on the wildlife in your school grounds?</u> Can you improve the habitats you have?
	6th March	World Book Day	World Book Day seeks to promote a love of books and shared reading. Why not encourage your children to take photos of themselves reading their favourite books outside in an unusual out-of-the-ordinary place? <u>Here are some other outdoor ideas for World Book Day.</u>
	7th - 16th March	British Science Week	A ten-day celebration of science, technology, engineering and maths. The theme for 2025 is Change and Adapt.
	23rd March	World Meteorological Day	World Meteorological Day commemorates the establishment of the World Meteorological Organization. The theme of World Meteorological Day 2025 is 'Closing the early warning gap together'.
	24th March - 4th April	Sustrans Big Walk and Wheel	Big Walk and Wheel (was the Big Pedal) is the UK's largest inter-school walking, wheeling, scooting and cycling challenge. It inspires pupils to make active journeys to school to improve air quality in their neighbourhood as well as inspiring pupils, staff and parents to take active journeys to school.
	21st April	John Muir Day	John Muir Day offers an annual opportunity to mark John Muir's birthday, 21st April 1838. The <u>John Muir Award</u> is an environmental award scheme great for upper primary aged children and beyond.





# THEMES AND DAYS FOR OUTDOOR LEARNING

	DATE	EVENT	ALL THE INFO
	21st – 28th April	International Dark Sky Week	International Dark Sky Week is marked every year during the week of the new moon in April. It's a week to switch off lights in the evening and marvel at the infinite grandeur of the night sky.
	22nd April	Earth Day	A day to remember the environment and to continue to do the little things that help our planet. The 2025 theme is Our Power, Our Planet <a href="#">20 Earth Day activities for children</a>
	29th April – 5th May	National Gardening Week	The UK's largest celebration of gardening.
	1st – 31st May	National Walking Month	Walking has a whole host of different health benefits and this is the perfect time to get your class outside and go for a nature walk.
	5th – 11th May	National Hedgerow Week	Celebrate the Spring hedgerows. Why not carry out a biodiversity survey on your school or local hedges? Whilst the online data entry for the <a href="#">OPAL Biodiversity Survey</a> is closed, you can still use the survey to explore hedgerows in your local area.
	8th May	Outdoor Classroom Day	Outdoor Classroom Day is a global movement to make time outdoors part of every child's day. On two days of action each year, teachers take children outdoors to play and learn.
	17th – 25th May	World Orienteering Week	World Orienteering Week is all about increasing the visibility, accessibility and participation of young people in orienteering. Why not create an orienteering course on your school grounds?
	20th May	United Nations World Bee Day	A day to raise awareness on the essential role bees and other pollinators play in keeping people and the planet healthy, and on the many challenges they face today. <a href="#">Keeping bees in school</a> - <a href="#">Bee Spotter Sheet</a>
	24th May – 1st June	National Children's Gardening Week	National Children's Gardening Week aims to encourage children to enjoy and learn about gardening.



# UPCOMING COURSES

**Hampshire Outdoors** offer a wide range of courses covering Outdoor Learning; Fire Lighting; Risk Management; Camping in the School Grounds, Physical Education; Duke of Edinburgh Award, Bikeability and First Aid courses. See [here](#) for more details on all the courses we offer.

Many of our courses can be offered as bespoke courses for your school. If you would like to book a bespoke course please complete [this form](#). Book early to secure the dates you want!

## **Offsite and Visit Leader Course** (valid for 5 years) £120 SLA (£165 non-SLA) per delegate

- Wed 12 March Woodmill Outdoor Activities Centre, Southampton SO18 2JR
- Tue 18 March Stubbington Study Centre, Fareham PO14 2ND
- Wed 21 May Stubbington Study Centre, Fareham PO14 2ND
- Thu 12 June Testwood Lake Centre, Totton SO40 3XP
- Tue 24 June Nature Discovery Centre
- Wed 2 July Stubbington Study Centre, Fareham PO14 2ND
- Thu 3 July Woodmill Outdoor Activities Centre, Southampton SO18 2JR



## **Full Educational Visits Coordinator (EVC) Initial Training Course** (valid for 5 years)

Please note that both sessions must be attended.

£150 SLA (£200 non-SLA) per delegate

- Wed 26th & Thurs 27th March 2025 - 15:00-17:30 Microsoft Teams

## **Educational Visits Coordinator (EVC) Refresher Training** (valid for 5 years)

Half-day refresher for those EVC's whose qualification has expired.

£90 SLA (£120 non-SLA) per delegate - 0.5 day refresher course

- Wed 14th May 2025 - Microsoft Teams

## **Using the Outdoors to Support Your National Curriculum Delivery**

£120 SLA (£165 non-SLA) per delegate

- Tues 1 April 2025 - Stubbington Study Centre, Fareham PO14 2ND



## **ITC Outdoor First Aid - 2 day Course**

£135 SLA (£180 non-SLA) per delegate

- Sat 15th & Sun 16th March 2025 - Minstead Study Centre, Minstead SO43 7GJ

## **Outdoor First Aid Emergency Action - 1 day course**

£100 SLA (£130 non-SLA) per delegate

- Saturday 7 June 2025 - Stubbington Study Centre, Fareham PO14 2ND



# EVOLVE



Book courses through the [Hampshire County Council Learning Zone](#).

Please call 0370 779 1498 or email [karen.storey@hants.gov.uk](mailto:karen.storey@hants.gov.uk) if you have any queries.