



Basingstoke
and Deane

Hart
DISTRICT COUNCIL

working together

The Big recycling count

Hi
Everyone,
I'm Ralph the
recycling bin and I'd
like to welcome you to
your schools recycling
count down.

We
would love
to know what you
and your family are
recycling at home and
we want you to tell
us all about it!



What can and can't be recycled in your green bin?

Yes please



All clean paper - Newspapers, magazines and junk mail, envelopes, directories and yellow pages, brochures and catalogues (please take off plastic wrappers)



All cardboard - Cereal boxes and other cardboard packaging, greetings cards and boxes (please flatten or cut up big boxes)



All types of tins, cans and empty aerosols - Please rinse tins and cans. Remove loose plastic lids from aerosols. Do not pierce or squash aerosols



All plastic bottles - Drinks and milk bottles shampoo and other cosmetic bottles. Cleaning and washing up liquid bottles.

No thank you



Certain plastic packaging may have symbols which suggest it can be recycled e.g. yoghurt pots, these are made from different types of plastic and there are no sustainable markets to recycle them at present.



It's not possible to sort shredded paper from other recyclables. Please take it to your local paper bank to be recycled or add to your home compost bin.



Recycling tetra paks is difficult and cannot be done close to Basingstoke. This means it is better to incinerate them to make energy in Hampshire for local homes.

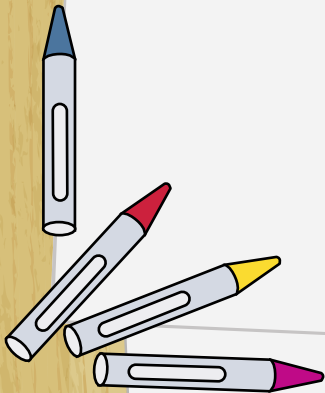
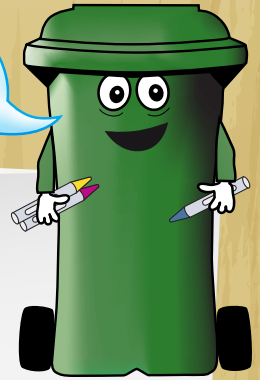


Gift wrap doesn't always contain much paper and is often layered with foil plastic.



Before we start though I need your help! Every school needs their own recycling mascot and I would like you to design a friend for me!

Your mascot will need a name.



Name:

Class:

Below is a list of all the items you can recycle at home.

Monday

Tuesday

Wednesday



Paper



Tins



Cans



Plastic bottles



Aerosols



Cardboard

	Monday	Tuesday	Wednesday
Paper			
Tins			
Cans			
Plastic bottles			
Aerosols			
Cardboard			

Glass box



Glass jars /bottles

--	--	--

We would like you to count the items you recycle for seven days and count them in the tally sheet below.

Thursday

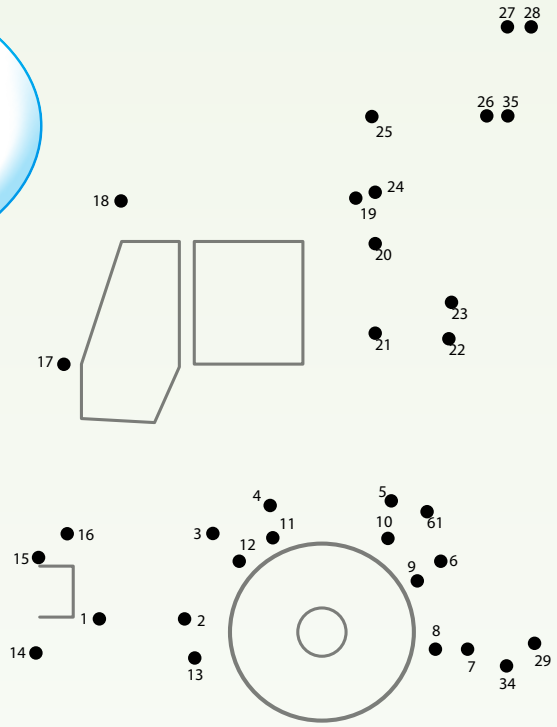
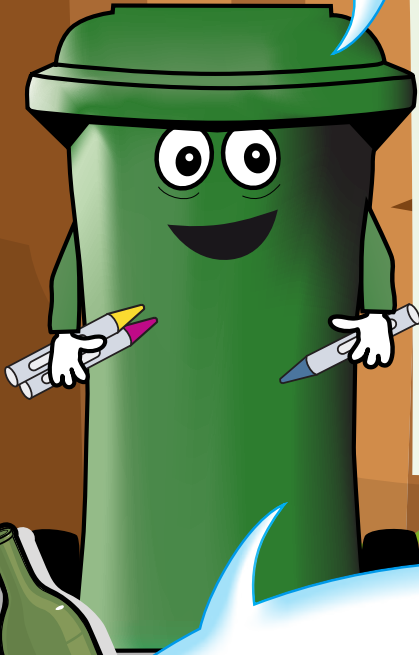
Friday

Saturday

Sunday

--	--	--	--

Join the numbers to find out what the picture is. Then colour it in.



Can you find the 16 words in the wordsearch? They can be forwards, backwards up, down or diagonal.

aerosol

clothes

food

paper

can

bottle

glass

plastic

cardboard

box

magazine

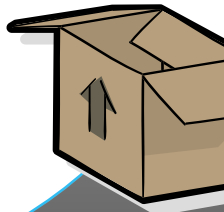
shoes

compost

envelope

newspaper

tin



31 ● ● 32

42 ●

41 ●

43 ● ● 44

36 ● ————— ● 40

● 39

50 ●

● 45

● 46

37 ●

● 38

● 60

● 59

● 52

51 ●

● 49

● 48

● 47

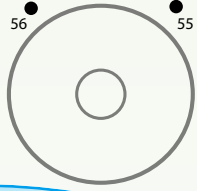
● 56

● 55

30 ●
● 33

● 58 ● 57

● 54 ● 53



b	o	t	t	l	e	i	x	r	s	f	b	f
w	u	g	m	s	r	m	l	p	c	d	f	i
g	p	l	s	w	e	a	e	r	o	s	o	l
c	l	a	y	a	k	g	w	x	m	o	n	c
r	l	o	f	i	s	a	e	o	p	b	e	a
g	z	c	b	t	s	z	d	b	o	l	w	r
n	k	j	l	a	h	i	d	z	s	c	s	d
c	c	r	v	o	g	n	a	h	t	i	p	b
a	e	y	o	t	t	e	y	j	e	t	a	o
n	d	t	q	u	s	h	o	e	s	s	p	a
w	o	i	a	p	a	p	e	r	u	a	e	r
f	o	n	d	k	i	c	m	s	b	l	r	d
n	f	u	t	e	n	v	e	l	o	p	e	m





Find out what can your recycling be made into?

Paper



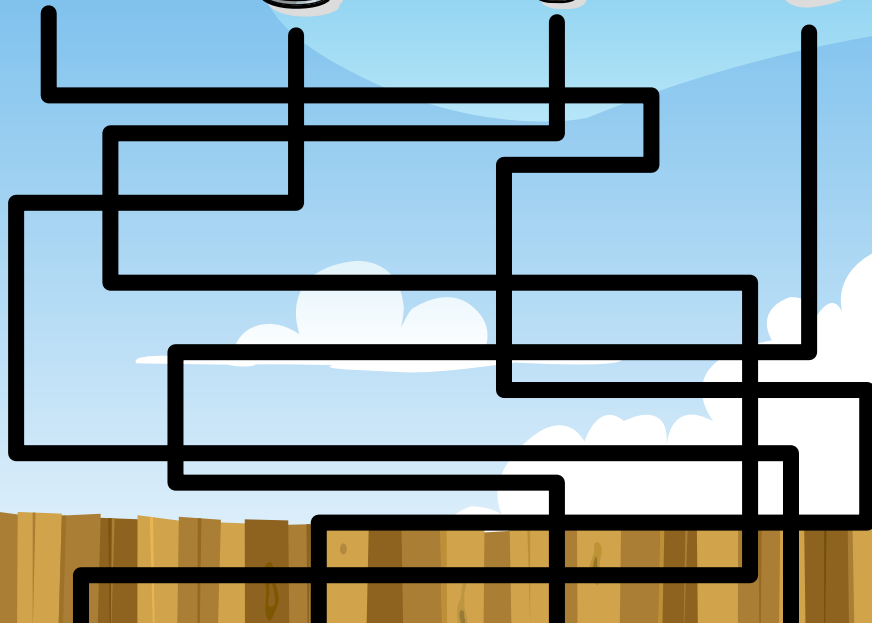
Cans



Glass



Plastic



can be made into aquarium gravel or used in road resurfacing!

can be made into newspaper, animal bedding, books, toilet roll and paper towels.

can be made into pipes, plastic containers and bottles, cotton padding or clothes.

can be made into airplane parts or car parts.



Printed on recycled paper

For more information on recycling visit www.basingstoke.gov.uk/go/recycling or call 01256 844844 or email recycling@basingstoke.gov.uk