

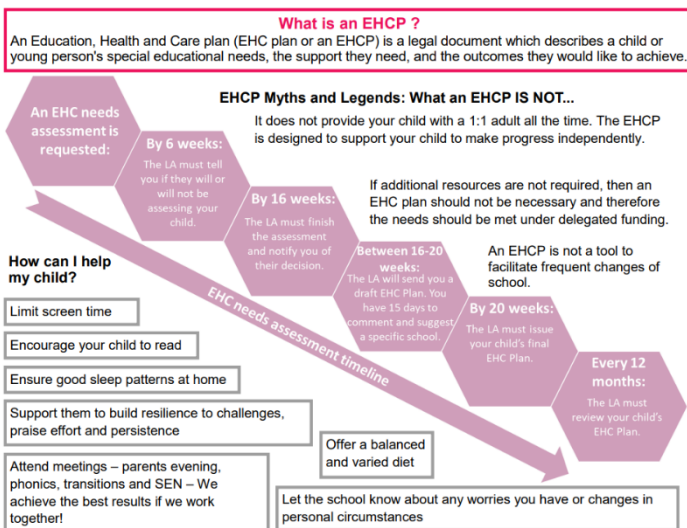
23rd September 2025

A Guide to Education Health Care Plans (EHCPs)

Dear Parents and Friends of Castle Hill,

As a SEND team, we have noticed an increase in questions about Education, Health, and Care Plans (EHCPs) over the last few years. We understand that navigating the world of special educational needs can be complex and we want to make sure you feel fully informed and supported. This communication aims to clarify what an EHCP is, its purpose and the process involved in obtaining one. We will also outline the different levels of support we already provide for all our students.

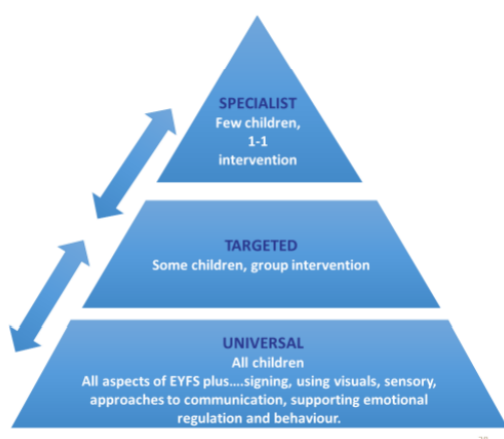
What is an EHCP and what is its purpose?



An EHCP is a legal document that outlines your child's special educational needs, the specific support they require and the goals they are working toward. It is designed for children whose needs cannot be fully met through a school's ordinarily available provision and SEND support. The plan is developed in collaboration with Hampshire County Council and an educational psychologist, using information gathered from both the school and the family. An EHCP brings together support from education, health and social care professionals to provide a holistic view of your child. It may be supported by a diagnosis(s); however this is not always necessary.

Every EHCP is unique and comes with a specific level of funding tailored to your child's needs. Most children with an EHCP will remain in a mainstream education setting such as Castle Hill through to secondary school, however, for a small number of children specialist provision may need to be considered. An EHCP does not automatically guarantee a child a space in specialist provision. For that to happen, there must be clear evidence that a mainstream setting simply cannot meet your child's needs without additional support. It is also important to know that an EHCP does not automatically mean your child will receive 1:1 adult support. The type and level of support are determined by your child's individual needs and may include a range of strategies, resources, and staffing arrangements. Ultimately, an EHCP is designed to help your child become an independent learner and to ensure they make the best possible progress with appropriate and inclusive support.

It is important to remember that an EHCP is written based on your child's current needs. If you are concerned about secondary school or future years, then an EHCP application may not be considered as they will be writing targets based on what is currently in place to support your child rather than planning for the 'what ifs'.



Castle Hill's provision:

Ordinarily available provision: This is the foundation of all provision at Castle Hill. It is available for every learner and is underpinned by high quality teaching where barriers are recognised and removed for all learners to make progress.

Reasonable adjustments should be made for all learners and may include visual timetables, flexible grouping and seating, assistive technology, access to quieter working spaces, memory aids and sensory resources.

We also offer small group interventions, which are usually run by our PTP team under the direction of the teachers. Interventions are

available to all pupils and are designed to supplement the curriculum, offering opportunities for over-learning and practice.

Targeted provision/SEND support: This level of support is offered to some children, who we have identified as having a barrier to their learning, where provision needed is above and beyond what is ordinarily offered for all learners. At Castle Hill, this is where we would consider a child on our SEND register to fall.

The support available is broken down by the four broad areas of need (physical and sensory; communication and interaction; cognition and learning and social, emotional health). Your child's PLP (Personalised Learning Plan) will outline termly targets to support their area of need.

Support here may include dyslexia-friendly resources (books, coloured overlays, dictionaries), sensory breaks, tray-based tasks, precision teaching, visual aids, pre-teaching, social stories, social groups, changes to routines and environments, support from our pastoral team, adapted resources to reduce cognitive load and multi-sensory teaching.

Specialist support/EHCP- How is one obtained?

If the support put in place at the previous two levels is not having the desired effect, and your child is still struggling to make progress - working significantly below the level expected for their age - we may begin discussing the possibility of collecting evidence for an EHCP application.

Evidence gathering is likely to take place over the course of a few terms and is likely to include support from an Educational Psychologist (EP). An EP will meet with the family and teaching team to discuss your child's strengths and areas for support and will offer guidance and suggestions on how we can best support your child both at home and at school. If, after some time, these suggestions are not having an impact, then we would consider putting in an application for an EHCP.

As a parent, you have the right to apply for an EHCP yourself. As a school, we will be asked to contribute (this is usually done by your child's class teacher with the support of the SENDco). In the case where there is insufficient evidence to suggest that your child is not making progress under the support we have put in place, then an EHCP may not be taken to assessment.

If you are considering making an application as a parent, we ask that you consult the school SENDco and your child's class teacher. This is so we can discuss the current support and ensure we are all clear about your child's current needs both at home and at school.

Points of contact:

Mrs Lund – Assistant Head Teacher for Inclusion and SENDco (Y4-6 at Rooksdown)

Mrs Cook – Assistant SENDco for Early Years and Years 1-3 at Rooksdown

Miss Mould – Assistant SENDco for Years 3-6 at Greenbank

Please do not hesitate to contact us if you have any queries.

Yours sincerely,

The SEN team

Mrs Lund, Mrs Cook and Miss Mould