

Castle Newnham School
Community - Opportunity - Respect - Excellence

YEAR 9
OPTIONS
EVENING



TUESDAY
6TH FEBRUARY



Mrs Sara Levesley - Head of School - Secondary

Mr Shaun Stevens - Assistant Principal

Miss Shaan Hussain - Head of Year



Community
Opportunity
Respect
Excellence



**Community
Opportunity
Respect
Excellence**



**Community
Opportunity
Respect
Excellence**



**Community
Opportunity
Respect
Excellence**

LEARN THE
RULES LIKE
A PRO
SO YOU CAN
BREAK THEM
LIKE AN
ARTIST!



Community
Opportunity
Respect
Excellence



**KEY STAGE 4
OPTIONS**



**Community
Opportunity
Respect
Excellence**

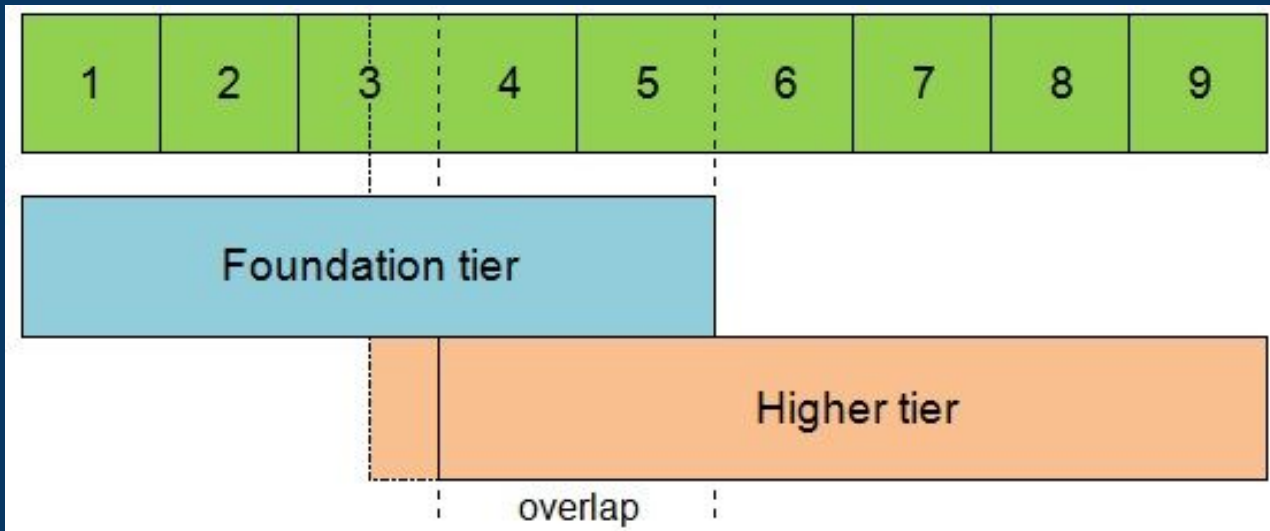
How are Grades Awarded?

New GCSE Grade Structure	Previous GCSE Grade Structure	Vocational Grades	
9 8 7	A* A	L2D*	L2D
6 5 4	B C	L2M L2P	
3 2 1	D E F G	L1D L1M L1P	L1P
U	U	U	



Community
Opportunity
Respect
Excellence

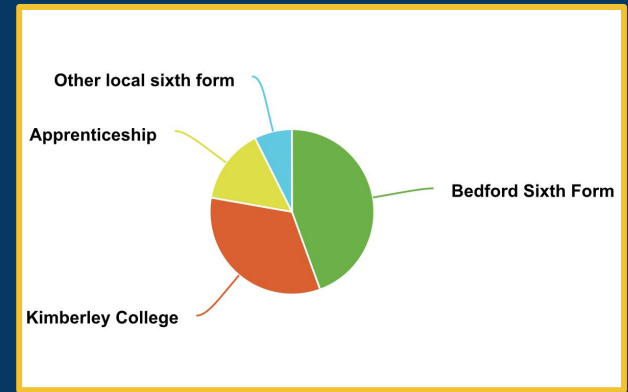
GCSE Tiers of Entry



**Community
Opportunity
Respect
Excellence**

Post 16 Destinations

Post 16 Destination	Qualification Type	Minimum Entry Requirements
Sixth forms A level colleges	A Levels	5 GCSE passes at grade 4 (including English and Maths) Specific Colleges and Sixth forms may have their own entry requirements (eg a grade 5 in Maths is required to study Psychology)
Colleges Vocational courses	Level 2 Qualifications	3 GCSEs at grade 3 including English and Maths or a qualification at Level 1
	Level 3 Qualifications	4 GCSEs at grade 4 including English and Maths or a Level 2 qualification
	T Level Qualifications	4 GCSEs grades 9-4 including English, Maths and Science or equivalent
Apprenticeships	Linked to college courses and T level Qualifications.	



**Community
Opportunity
Respect
Excellence**

Options Timeline

Week Beginning 29 January 2024

PSHE Next Steps Lessons - GCSE Option Choices

6 February 2024

Information Evening for Year 9 pupils and parents to explain the Options process

28 February 2024

Year 9 assembly with pupils to explain the Options process - next steps

4 March 2024

Pupils' Option Choices form completed in time for pupil interview process to begin

4 March - 21 March 2024

Individual meetings with pupils and members of CNS staff

22 March 2024

Option Choices form - submission deadline

June 2024

Parents and pupils informed of subject choice allocation



**Community
Opportunity
Respect
Excellence**

GCSE Curriculum

Core Curriculum Subjects

GCSE English Language

GCSE English Literature

GCSE Maths

GCSE Combined Science

GCSE French

Core Physical Education

Core Religious Studies

PSHE



**Community
Opportunity
Respect
Excellence**

GCSE Curriculum

Option Subjects

Humanities Choice

Geography

History

Option A

Art and Design
Citizenship Studies
Classical Civilisation
Design Technology (3D Design)
Drama
Geography
Hospitality and Catering
Music
Spanish

Option B

Art and Design
Dance
Design Technology (Graphics)
History
Hospitality and Catering
GCSE Physical Education
Cambridge National Sports Studies
Religious Studies
*Triple Science



**Community
Opportunity
Respect
Excellence**

GCSE Curriculum

Option Choices

Humanities Choice

Geography

History

Option A

Art and Design

Citizenship Studies

Classical Civilisation

Design Technology (3D Design)

Drama

Geography

Hospitality and Catering

Music

Spanish

Option B

Art and Design

Dance

Design Technology (Graphics)

History

Hospitality and Catering

GCSE Physical Education

Cambridge National Sports Studies

Religious Studies

*Triple Science



**Community
Opportunity
Respect
Excellence**

GCSE Curriculum

Option Choices

Humanities Choice

Geography

History

Option A

Art and Design

Citizenship Studies

Classical Civilisation

Design Technology (3D Design)

Drama

Geography

Hospitality and Catering

Music

Spanish

Option B

Art and Design

Dance

Design Technology (Graphics)

History

Hospitality and Catering

GCSE Physical Education

Cambridge National Sports Studies

Religious Studies

*Triple Science



**Community
Opportunity
Respect
Excellence**

GCSE Curriculum

Option Choices

Humanities Choice

Geography

History

Option A

Art and Design
Citizenship Studies
Classical Civilisation

Design Technology (3D Design)

Drama
Geography
Hospitality and Catering
Music
Spanish

Option B

Art and Design
Dance
Design Technology (Graphics)
History
Hospitality and Catering
GCSE Physical Education
Cambridge National Sports Studies
Religious Studies
*Triple Science



**Community
Opportunity
Respect
Excellence**

GCSE Curriculum

Option Choices

Humanities Choice

Geography

History

Option A

Art and Design
Citizenship Studies
Classical Civilisation
Design Technology (3D Design)
Drama
Geography
Hospitality and Catering
Music
Spanish

Option B

Art and Design
Dance
Design Technology (Graphics)
History
Hospitality and Catering
GCSE Physical Education
Cambridge National Sports Studies
Religious Studies
*Triple Science



**Community
Opportunity
Respect
Excellence**

GCSE Curriculum

Option Choices

Humanities Choice

Geography

History

Option A

Art and Design
Citizenship Studies
Classical Civilisation
Design Technology (3D Design)
Drama
Geography
Hospitality and Catering
Music
Spanish

Option B

Art and Design
Dance
Design Technology (Graphics)
History
Hospitality and Catering
GCSE Physical Education
Cambridge National Sports Studies
Religious Studies
*Triple Science



**Community
Opportunity
Respect
Excellence**

GCSE Curriculum

Option Subjects

Humanities Choice

Geography

History

Option A

Art and Design
Citizenship Studies
Classical Civilisation
Design Technology (3D Design)
Drama
Geography
Hospitality and Catering
Music
Spanish

Option B

Art and Design
Dance
Design Technology (Graphics)
History
Hospitality and Catering
GCSE Physical Education
Cambridge National Sports Studies
Religious Studies
*Triple Science



**Community
Opportunity
Respect
Excellence**

Guidance

- We endeavour to meet all first choices, but if this is not possible we will use the reserve option and inform pupils of this change giving them the opportunity to change it if they can.
- All courses are subject to demand. If not enough pupils choose a course, the subject will not be available.
- If a large number of pupils express a preference for a course, we will do our best to put on additional classes to meet the demand, but this may not always be possible, for reasons of staffing and specialist facilities.



**Community
Opportunity
Respect
Excellence**

Key Contacts

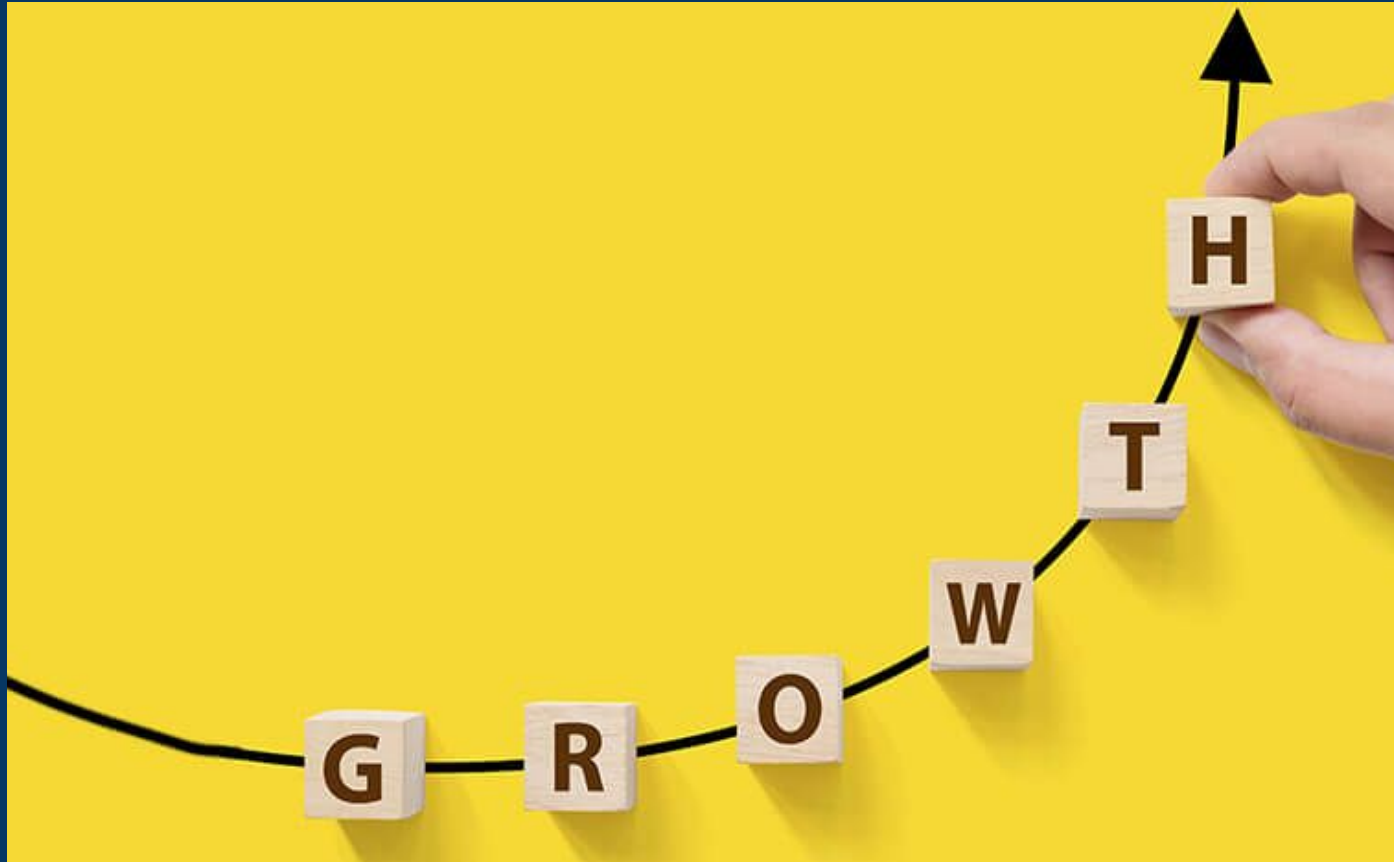
- Form Tutor
- Subject teachers and Heads of Department
- Miss Shaan Hussain - Head of Year 9
- Mr Sean Carter - Careers Advice and Guidance

Email secoffice@castlenewnham.school and they will forward your enquiry to the right person.



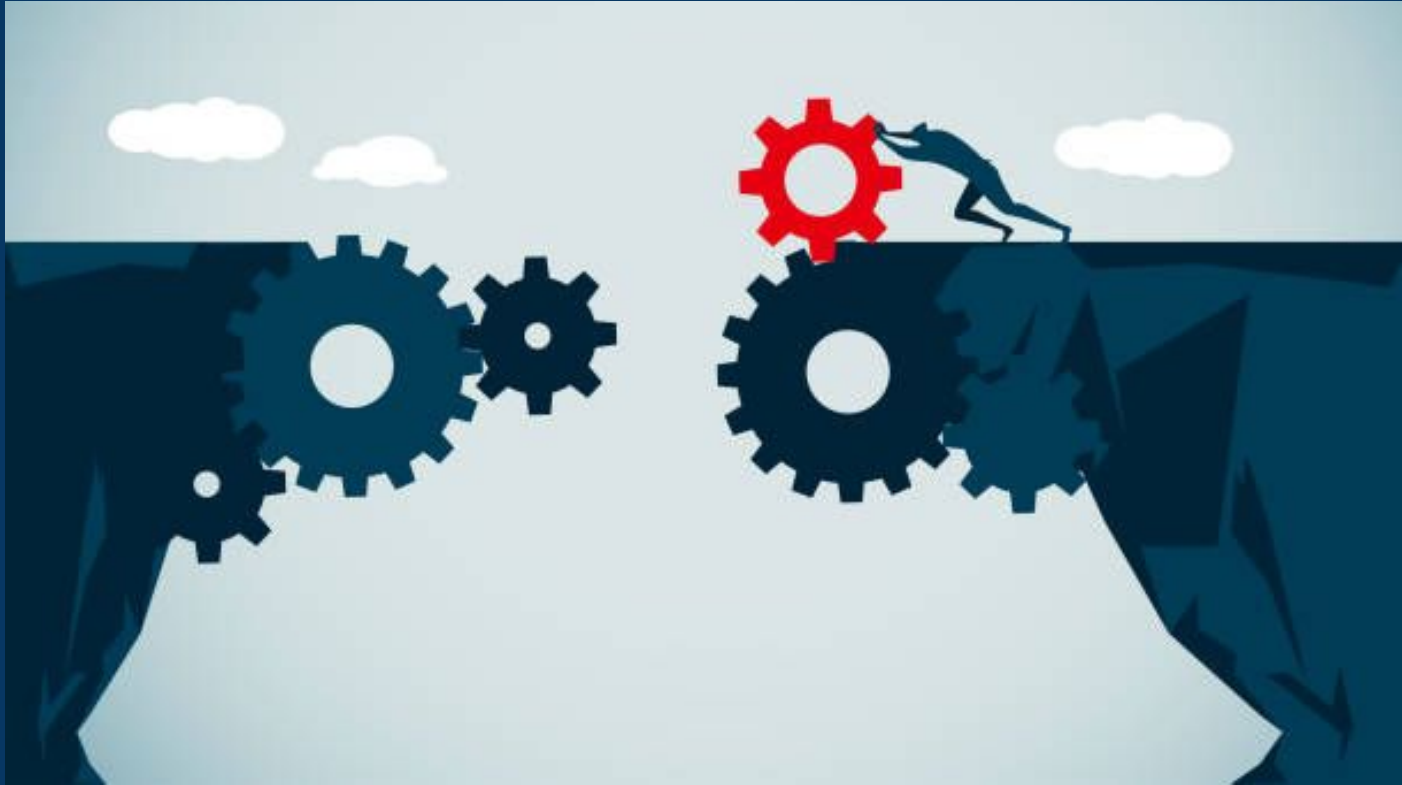
**Community
Opportunity
Respect
Excellence**

Personal



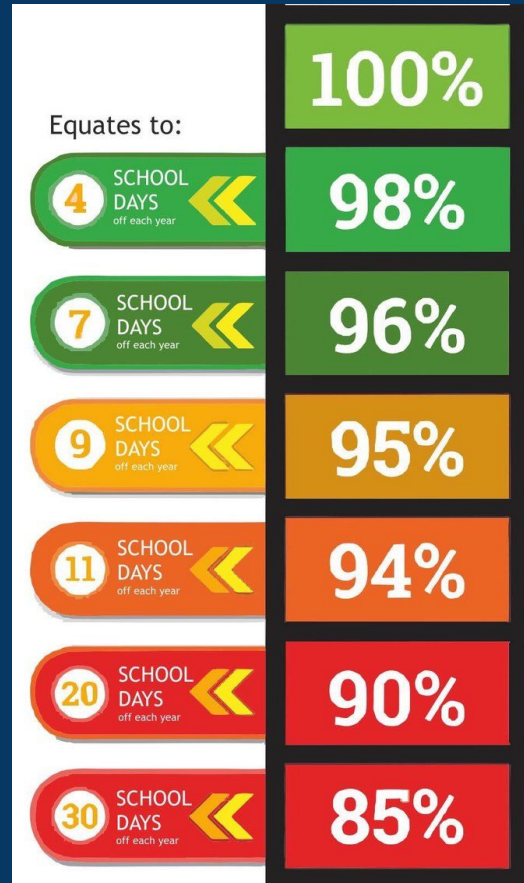
Community
Opportunity
Respect
Excellence

Challenges



**Community
Opportunity
Respect
Excellence**

Small numbers = big difference



98% = 4 days = 20 lessons

95% = 9 days = 45 lessons

90% = 20 days = 100 lessons



Community
Opportunity
Respect
Excellence

Importance of Wellbeing

Pupil wellbeing refers to pupils feeling happy, healthy and relaxed, both within themselves but particularly in the home and school environment. Pupil wellbeing prioritises all aspects of pupils health, whether they be physical, mental, or emotional.

Strategies:

- Prioritising Self care
- Sleep
- Reduction of screen time
- Maintaining a healthy balanced diet
- Pursuing a hobby
- Engaging in physical activities

<https://www.youngminds.org.uk/>



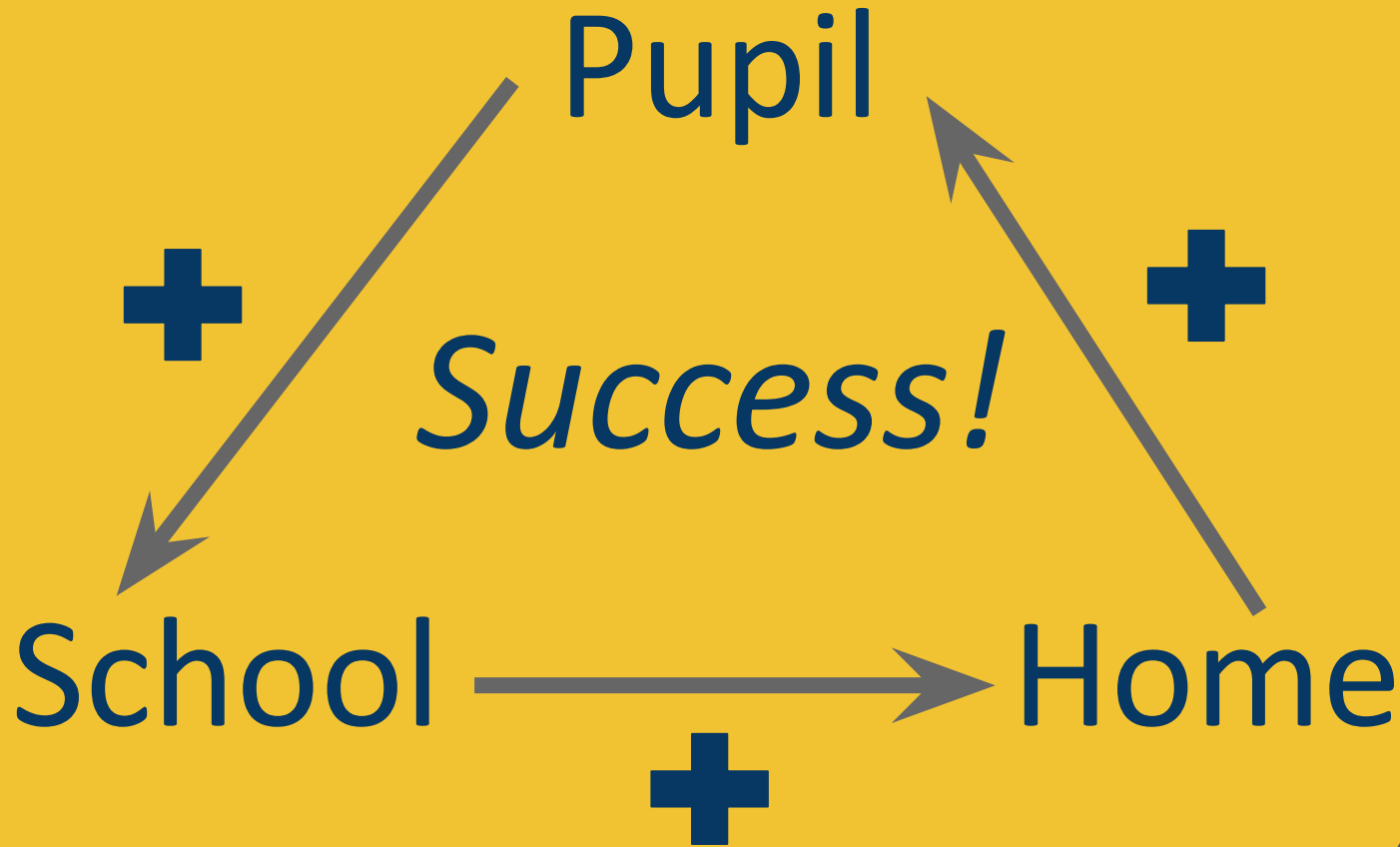
**Community
Opportunity
Respect
Excellence**

How to support from home

- ✓ Communication - Please do stay in touch. We want to do everything we can to support your child and we will need input from home to know exactly how we can provide the best support.
- ✓ Routine - help them plan work, be active and relax (& sleep!)
- ✓ Organisation - in all areas.... (resources / revision guides)
- ✓ Environment - have they got a quiet place to work?
- ✓ Balance - balance is key - study & leisure time



**Community
Opportunity
Respect
Excellence**



Community
Opportunity
Respect
Excellence



Community
Opportunity
Respect
Excellence