

Castle Primary School

Weekly Bulletin - 12/12/2025



Upcoming Diary Dates - December

Monday 15th December - Christmas Dinner

Tuesday 16th December - KS2 Christmas Concert - 1:30 pm. Audience to enter via the hall door from 1:20pm

Wednesday 17th December - KS2 Christmas Concert - 4:45pm.

Children to arrive back to school for 4:30pm. Audience to enter via the hall door from 4:30pm

Friday 19th December - School Panto 9:30am - Panto in School

Friday 19th December - Christmas Jumpers along with your usual school uniform and Class Parties



Christmas Lunch Monday 15th December

If you haven't booked your child's Christmas lunch, please remember to send your child with a packed lunch. Please note that the normal menu will not be available on this day - only the Christmas lunch will be offered.

Please ensure there is sufficient credit on your ParentPay lunch service account.



PTA

Christmas Fayre

Thank you to everyone who supported our Christmas Fayre. We received many wonderful donations for our stalls. The event was very well attended and raised a fantastic **£708.00**.

A special thank you to our amazing PTA team, who worked extremely hard to make the Fayre such a great success.

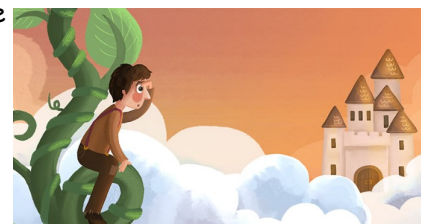
Breakfast With Santa

All the children had a wonderful time having Breakfast with Santa, meeting Santa and receiving a gift. The PTA worked very hard to make this event successful, and it raised an impressive **£455.00**.

Swimming

The children have now finished their swimming sessions for this academic year. Please ensure any outstanding coach transport payments are made via ParentPay.

With some of the funds raised this year, the PTA are very kindly covering the cost of the production company who will be coming into school on Friday 19th December to perform the pantomime *Jack and the Beanstalk*.



School Uniform

Please make sure your child's uniform is clearly labelled with their name in. We have a few cardigans and jumpers in school with no names

New member of the Team

Mrs Chesters

Mrs Chesters has joined the Castle team. Mrs Chesters is going to be responsible for our attendance procedures; this will include supporting families if attendance drops below 90%.

In addition, Mrs Chesters is a trained ELSA (Emotional Literacy Support Assistant). In this role, she will be supporting those children in our school community who may need some additional support to understand and deal with their emotions. If you think your child would benefit from this support, please let their class teacher know and a referral can be put in place.

