

# CATHOLIC SOCIAL TEACHING AT THE CATHEDRAL CATHOLIC PRIMARY SCHOOL

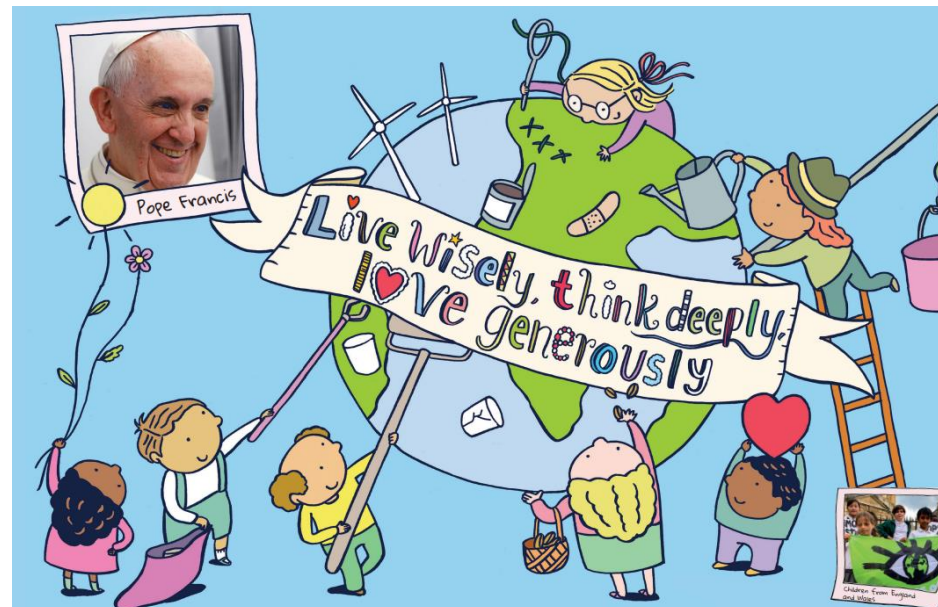


*Unlocking Potential Together  
in Faith and Love.*

Catholic Social Teaching (CST) is rooted in Scripture, formed by the wisdom of Church leaders and linked to faith in action. It is our moral compass, guiding us on how to live out our faith in the world.

At The Cathedral Catholic Primary School, Catholic Social Teaching underpins the essence of our daily school life. As members of the Catholic Church, we are called upon to preserve the dignity of all human beings, to care for creation, and to reach out to our sisters and brothers in need. Pope Francis emphasises that it is our duty to work together to bring about a more just and peaceful world: to put love into action. It is vital that our children can articulate the connection between Jesus' teaching and how these teachings are lived out.

Catholic Social Teaching is embedded in our learning through our religious education curriculum and it is lived out through our mission as a Catholic school. We use CAFOD Catholic Social Teaching resources to support our learning and these are organised into nine principles. This document outlines some of the ways we live out Catholic Social Teaching in our school, linked to CAFOD's nine principles.



# CATHOLIC SOCIAL TEACHING AT THE CATHEDRAL CATHOLIC PRIMARY SCHOOL



Unlocking Potential Together  
in Faith and Love.

<p style="text-align: center;"><b>Participation</b></p> <p>Pupil leadership roles, e.g. librarians, environmental officers School Council Links with our Parish, e.g. celebrating Feast Days together Carol singing in the community, e.g. local care home Ecumenical links, e.g. sharing a Remembrance Day liturgy Parent prayer drop-ins Active PTA committee Parishioners listen to readers in school Parents invited into school to celebrate Mothers' Day and Fathers' Day Extra-curricular activities and clubs</p>	<p style="text-align: center;"><b>Common Good</b></p> <p>Our Mission Statement outlines how we work together to provide the best we can for all Weekly mission linked to Sunday's Gospel focuses on putting faith into action Safeguarding, Inclusion and Relational Policies Pastoral support team provide additional support to children and their families Community activities, e.g. carol singing, litter picking</p>	<p style="text-align: center;"><b>Distributive Justice</b></p> <p>Learning about and promoting fair trade products Inclusion policy and practice Use of PPG funding to ensure all children have access to opportunities Promotion of equality in all aspects of school life</p>
<p style="text-align: center;"><b>Option for the Poor</b></p> <p>St Francis of Assisi group lead fundraising for charities which work with people in need, e.g. CAFOD, Mission Together, Lancaster and District Homeless Action, local foodbank Pastoral support team provide additional support to children and their families, including ordering food parcels when needed All children are offered bagels for breakfast on arrival at school PPG funding is used to support families in paying for extra-curricular activities Pre-loved uniform sales</p>	<p style="text-align: center;"><b>Human Dignity</b></p> <p>Inclusion policy and practice Relational policy and practice Safeguarding policy and practice Celebration of Black History Month and Refugee Week Learning about neurodiversity Pastoral support and play therapy provision Use of emotion coaching to support emotional needs Learning about the Slave Trade in Lancaster Prayers for those who have died in November PSHE and prayer and liturgy opportunities to understand how we are all special</p>	<p style="text-align: center;"><b>Stewardship</b></p> <p>Eco-monitors promote recycling and energy saving Class gardening areas Science, geography and PSHE learning promote understanding of how we can live more sustainably Outdoor learning used regularly across the curriculum Paper recycling and reduce use of paper Reduce laminating Celebrating the Season of Creation and recognise how we can look after our world Cycle racks to encourage cycling to school Use of sustainable equipment, e.g. recyclable glue sticks Enterprise Week</p>
<p style="text-align: center;"><b>Solidarity</b></p> <p>We are a School of Sanctuary Celebration of Refugee Week, Red Wednesday, Black History Month. Learning about neurodiversity Anti-racism charter St Francis of Assisi group promote awareness of and fundraising for charities, e.g. Homeless Shelter, CAFOD, local food bank, walk for Ukraine Prayers for those in need</p>	<p style="text-align: center;"><b>Promoting Peace</b></p> <p>Weekly mission promotes Jesus' teachings Values promoted in our mission statement Relational policy and practice PSHE and RE learning promote understanding of others Time for quiet reflection during prayer and liturgy Emotion Coaching Red Wednesday prayer Learning all about ourselves and what makes us feel good</p>	<p style="text-align: center;"><b>Subsidiarity</b></p> <p>Use of pupil and parent questionnaires for monitoring and evaluation. School council ensure every child has a say in issues which they address Importance of pupil voice when monitoring subjects (led by subject leaders and governors) and when reviewing provision for children with SEND PSHE and online contracts between pupils, teachers and parents Pupil led times of prayer and liturgy</p>

