



Chapelford Village Primary School

NEWSLETTER

Friday 28th May 2021



We are once again teaching the whole curriculum and our children have been focusing on their history skills this half term. After the holidays, the focus will shift so that the learning will be geography based. Please visit our website where you will find information about geography under the curriculum tab. There are some great tips about supporting your child to become a geographer.

This week in EYFS the children have been looking at non-fiction books. They have discussed the different parts of a non-fiction book including the contents page, page numbers and the glossary. They have also been looking at road safety and practised crossing the pretend road in their classrooms. Continuing with how to stay safe, they discussed strangers and safe strangers and identified that safe strangers are people in uniforms like Police, Fire fighters and shop assistants.

To help them write amazing stories, Year 1 have been using some Talk for Write strategies. They have enjoyed acting out the tale of The Big Bad Owl and this has meant they could write their own versions. The children have loved making free standing structures in DT. They have created a cage to keep Hootopize in. He is one of the character from the book, Toys in Space. In maths, they have been focusing on place value to 100.

Year 2 have had a brilliant week in English. The children have been reading the book 'Jack and the Baked Beanstalk'. They created fantastic descriptions about what would be at the top of their magical beanstalk and wrote a persuasive advert to make the friendliest giant choose their magic bean. They thought carefully about the sentence types they included, using questions, commands and exclamation sentences. In Art, the children have been focusing on creating collages. They have been practising their collaging skills, using different techniques such as crumpling, overlapping and tearing. They created their fantastic final collage piece which was based on the Great Fire of London 1666 which look incredibly effective with eye-catching bright colours.

It has been another busy week in Year 3. The children have continued their coding work on scratch and creating backgrounds and coding character's movements. They have also put on their geologist hats to conduct more interesting experiments on the three types of rocks. In groups, they have planned, conducted and evaluated experiments to explore the properties of various rock samples.

Year 4 have continued to work extremely hard this week! They have finished their non-chronological reports on rainforests making sure to include organisational features such as paragraphs and sub-headings as well as lots of technical language. All three classes have really enjoyed gathering researching, specifically looking at the layers, animals and tribes that live there. In spelling this week children have been practicing their common exception words creating graffiti walls to display in our spelling stations and practised on the tables using whiteboard pens!

This week, Year 5 have begun to explore the world of structures! Many people would think they are simple pieces of construction, but they are so much more. Year 5 have explored the features of frames and how we can make them more secure using triangles. Using their DT skills, they have used saws, sandpaper and measuring to create a structure that can withstand a heavy load. Do you think you could take on this challenge?

Year 6 have finished their biographies on Albert Einstein and have loved getting creative, publishing all their amazing writing from this term. The children have been busy learning to tell the time and problem solve with time- an important skill for them to take to high school!

Everyone has been waiting so long for the opportunity to get away so hopefully, many of you have been able to book some kind of break or holiday during this half term holiday. Please have a wonderful time and fingers crossed for good weather. School will re-open on Monday 14th June and classroom doors will be open from 8:40 am to 9:00am as usual. The existing systems will remain in place for now until our review after June 21st.

Thank you all for your continued support.

Mrs Joanne Hewson
Headteacher

Star Learner	
1. Chile	12. Amelia
2. Harleen	13. Addison
3. Mia	14. Ruby
4. Eva	15. Lauren
5. April	16. Caitlyn
6. Ruby	17. Louisa
7. Fliss	18. Amelia
8. Millie	19. Lewis Br
9. Libby	20. Oscar
10. Ben	21. Max
11. Esme	

Reader of the Week	
1. Willow	12. Harry
2. Alfie	13. Mason
3. Charlotte	14. Georgie
4. Ollie	15. Charlie
5. Tommi	16. Arthur
6. Luca	17. Harriet
7. Krishan	18. Bradley
8. Mohammad	19. Matthew
9. Matas	20. Amelia
10. Isabella	21. Isabelle T
11. Bentley	

PARKING NOTICE

For the safety of all children and adults, please be reminded that there is strictly no parking on the zebra crossing on both car parks. Thank you.

Please dismount all bicycles, scooters and hoverboards before entering the school premises. At the end of the day please do not allow your child to ride until you have left the school grounds.

Chapelford Village Primary School will close today for Whit Holidays.

School will open on **Monday 14th June 2021.**

Just a reminder that your child has brought home a reading sponsorship form. Usborne books will at least match any money raised so enabling the children to choose books that they would like to take with them into their new classes. Year 6 will choose books for the new reception children to read.

Thank you for your support.

Notice to Parents - *Play equipment*

Please do not allow your children to use the outdoor play equipment before or after the end of the school day. This equipment is used on a strict rota based during the school day to maintain health and safety, and ensure the integrity of the children's bubbles.

Thank you for your co-operation.

We're running a sponsored read over half term hoping to raise money for new reading for pleasure books in the children's classrooms. To increase our funding we're looking for anyone that works for a company that participate in 'Match Funding' below is a list of companies that do it. Do you work for one of these? If so we could really use your help! If you think you can help please email pta@chapelfordvillageprimary.co.uk

The entrance gate is now open for access to the school office. At this time we are allowing only one family into the foyer at any one time.

We ask that you wear a face covering and sanitise your hands before entering the foyer.

During drop off and pick up the one way system will still be in place.

Thank you for your understanding.



CORONAVIRUS INFORMATION

Changes to the Test and Support payment for parents

Parents and carers of children who have been advised to self-isolate by their schools or by NHS Test and Trace are now able to apply for a Test and Trace Support Payment or discretionary payment of £500, if they meet the eligibility criteria. The extension of the Test and Trace Support Payment Scheme is intended to ensure that parents receive the financial support they need if they are unable to attend work due to childcare responsibilities.

Applications for the Test and Trace Support Payment scheme are made via the local authority in which the parent or carer resides, not the local authority where the school is situated if these are different.

To be eligible applicants must meet all the criteria that:

*They are the parent or guardian of a child or young person in the same household and need to take time off work to care for them while they self-isolate. This is limited to one parent or guardian per household for the child or young person's self-isolation period.

*They are employed or self-employed.

*They cannot work from home while undertaking caring responsibilities and will lose income as a result.

*They meet all the other means-tested eligibility criteria for a Test and Trace Support.

*Payment or locally determined criteria for a discretionary payment.

That their child:

*Is aged 15 or under (or 25 or under with an Education, Health and Care Plan (EHC)) and normally attends an education childcare setting.

*Has been told to self-isolate by NHS Test and Trace or by someone who has tested positive for Covid-19.

Primary school pupils and rapid asymptomatic testing

On advice from Public Health England (PHE), pupils in primary schools and children in nursery settings are not included in the rapid asymptomatic testing programme.

PHE has advised that there are currently limited public health benefits to testing primary-aged pupils with lateral flow devices (LFD). In addition, primary-aged pupils, particularly younger children, may find the LFD testing process unpleasant and are unable to self-swab.

We are advising that primary-aged pupils should only be tested if they are symptomatic, in which case their families should follow the [guidance for households with possible or confirmed coronavirus \(COVID-19\) infection](#) and [book a PCR test](#) for the child.

FACE COVERINGS

In primary schools and early years settings it is recommended that staff and visitors wear face coverings where social distancing cannot be maintained between adults. These measures will be in place until Easter. As with all measures, we will keep this under review and update guidance as needed. A face covering is not PPE and can be a scarf, bandana or hand made cloth which fits around the face.

Please remember to wear a face covering and follow our one-way system for the safety all.



Have a safe and happy weekend.



is now part of



Let's Be Kids
Chapelford

WHIT HOLIDAY CLUB 1ST- 11TH JUNE

A great place to play and make friends
Children aged 3-11 welcome from all local primary
schools



This holiday club will be based at Chapelford
Village Nursery & Link Club

9am-3pm £17.50 8am -5pm £27.50

FIRST 20 BOOKINGS USE CODE PLAY! TO SAVE 10%

BOOK AT WWW.LETSBEKIDS.CO.UK

EMAIL CHAPELFORD@LETSBEKIDS.CO.UK

OR CHAPELFORDVILLAGENURSERY@CHAPEL1.PLUS.COM



NURSERY PLACES AVAILABLE FOR SEPTEMBER 2021

A great place to learn, play and make friends
Teacher led provision, with experienced and qualified staff



Places available for ages 2-5years

Open 7:45 am - 6pm 51 weeks per year

Childcare vouchers and Tax Free Childcare Accepted

15 and 30 hours funded places also available

EMAIL CHAPELFORDVILLAGENURSERY@CHAPEL1.PLUS.COM

CALL 01925 713220

WWW.CHAPELFORDVILLAGENURSERYANDLINKCLUB.CO.UK

Breakfast, after school and holiday club care for children who attend
Chapelford Village Primary School also available

#WEARETHEWIRE

HOLIDAY CAMP!

BEAMONT COLLEGIATE ACADEMY

1ST, 2ND & 3RD JUNE 2021

10AM TO 2.30PM

LIMITED INDIVIDUAL DAYS ARE AVAILABLE



TIME
FOR A
DANCE
PARTY!



Fun, no pressure dance and games party class. Learn about music and dance from around the world.

Suitable for ages 4-8 years.

A great introduction to dance class and a brilliant confidence booster.

No pressure, just fun! For boys + girls.

SS dance
& fitness

Wednesdays 4:30pm
Chapelford School
£4 per class

WHO'S READY TO CONQUER THE
DANCE FLOOR?



Monday 17th May 7pm
Chapelford School, Great Sankey
£5 per class

Get fit and burn calories the fun way!
New starters always welcome.
For all abilities and fitness levels.

Zumba Fitness combines Latin and international music with dance moves. Zumba routines incorporate interval training, alternating fast and slow rhythms to help improve cardiovascular fitness.

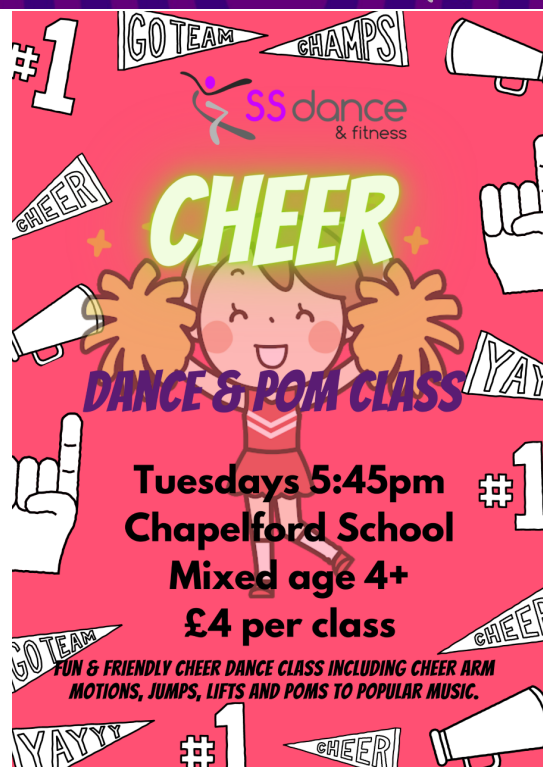
SS dance
& fitness

SS dance
& fitness



CHAPELFORD
LAUNCH PARTY

TUESDAY 18TH MAY 7PM £5
CHAPELFORD PRIMARY SCHOOL, GREAT SANKEY



Tuesdays 5:45pm
Chapelford School
Mixed age 4+
£4 per class

FUN & FRIENDLY CHEER DANCE CLASS INCLUDING CHEER ARM MOTIONS, JUMPS, LIFTS AND POMS TO POPULAR MUSIC.

Imperial Society of
Teachers of Dancing
Registered Member

IMPACT DANCE ACADEMY

- ★ BUILD CONFIDENCE
- ★ DEVELOP NEW SKILLS
- ★ MAKE FOREVER FRIENDS
- ★ BE A PART OF A TEAM
- ★ PERFORM

IMPACT DANCE ACADEMY OFFERS DANCE CLASSES
TO CHILDREN AGES 3-18

Ballet

Tap

Modern/Lyrical

Jazz/Commercial

Musical Theatre

CHAPELFORD VILLAGE PRIMARY SCHOOL
WARRINGTON, WA5 3AL

TO SIGN UP OR FOR MORE INFORMATION CONTACT
ANTHONY ON 07590040573

IMPACTDANCEACADEMY@HOTMAIL.CO.UK

Welcome Back!!